

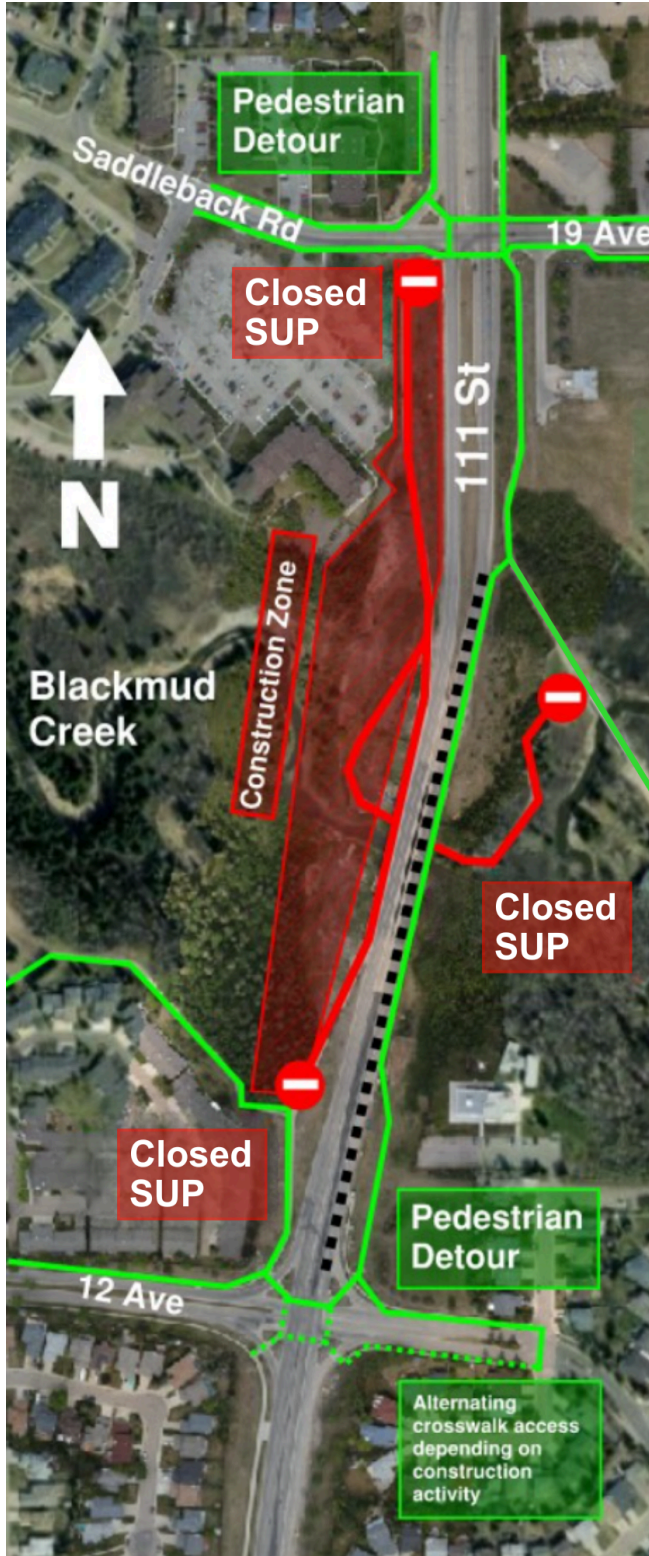
Construction Notice – Closure of Blackmud Creek Shared-Use Path

Beginning **on/around July 14**, Leducor, the Design-Build contractor for the project, will close the shared-use path (SUP) access to Blackmud Creek on the west side of 111 Street, just south of Saddleback Road, as well as the section of path branching east under the Blackmud Creek Bridge.

This closure is necessary for the construction of the Blackmud Creek LRT Bridge and will be in place for **approximately two years**. A detour will be in place on the east side of the existing Blackmud Creek Roadway Bridge along 111 Street between 19 Avenue and 12 Avenue. Fences and barricades will be installed to separate pedestrians and cyclists from the construction zone. Cyclists will be instructed to yield to pedestrians. Two lanes of traffic will be maintained in both directions, except for a short two-week period, during off-peak hours, toward the end of July. More information will be shared in a separate notice.

Please refer to the map below for details.

Map 1: Closure of Blackmud Creek Shared-Use Path (SUP) and Detour Route



Other Impacts

- Pavement markings along the shared-use-path detour path will be adjusted to two metres in width.
- Flagpersons may be used to accommodate pedestrians and cyclists around the work area.
- Efforts will be made to minimize noise, vibration and dust. Mitigation measures will be implemented to monitor and reduce these impacts.

During this construction period, Ledcor recognizes Edmontonians' passion for our natural areas and commits to working in Blackmud Creek with respect and consideration for the surrounding environment and its plants and wildlife. This includes tracking and protecting vegetation, following municipal [Public Tree Bylaws](#) under the supervision of certified arborists and monitoring and protecting nearby animals and nesting areas.

For More Information

City of Edmonton (general project inquiries)

Visit: edmonton.ca/capitalsw

Email: lrtprojects@edmonton.ca

Call: LRT Projects Information Centre at 780-496-4874 (voicemail)

Ledcor Group of Companies (construction-specific inquiries)

Email: capitallinesouth@ledcor.com

Call: Capital Line South public inquiry line at 780-540-7013 (voicemail)