

Valley Line West LRT QUARTERLY PROGRESS REPORT - Q2 2025

PERFORMANCE

This dashboard provides an overview of progress and performance of the Valley Line West (VLW) LRT Project and a summary of work completed by Marigold Infrastructure Partners (MIP) and the City of Edmonton (City).

CUMULATIVE PERFORMANCE	NOTES
COST PERFORMANCE <i>Measures the cost efficiency of the project</i>	Current cost performance is good. The project remains on budget.
SCHEDULE PERFORMANCE <i>Measures the schedule status of the project</i>	As of the end of Q2, construction progress as measured by the independent certifier is 43.4%.
SCOPE PERFORMANCE <i>Measures the current status of scope changes compared to the baseline scope</i>	There have been no significant changes to either MIP's scope of work or other City-contracted scopes of work.
PUBLIC COMMUNICATIONS <i>Most common public inquiries for the period</i>	The most common public inquiries for the Q2 period are related to construction, property damage, traffic and access impacts.

RECENT PROGRESS - SUMMARY

MIP Work in Q2:

During **Q2 2025**, design and construction activities progressed across the VLW LRT alignment. In **Area 8**, exterior and interior construction (Photo A) and track work continued at the Lewis Farms Storage Facility. In **Area 7**, progress on the Anthony Henday Drive (AHD) LRT bridge (Photo B) included work on the east and west approaches, track work, various formwork and fascia wall construction.

Roadwork and drainage installations were ongoing in **Areas 1-5**, with accelerated roadwork and track work, supported by partial and full closures, taking place at the following intersections:

- Meadowlark Road/87 Avenue (partial closure) in **Area 5** (Photo D).
- 124 Street/Stony Plain Road (SPR) (full closure) in **Area 3** (Photo E), with the intersection reopening June 11.
- 142 Street/SPR and 156 Street/SPR (partial closures) in **Area 4**.

In **Area 6**, MIP continued work on the elevated guideway (EG), Misericordia Station, and West Edmonton Mall (WEM) Station (Photo C), including slab pours, span erection, deck construction and work on columns, plinths and duct banks. In **Area 9**, ongoing construction on the Gerry Wright Operations & Maintenance Facility (OMF-B) included work in the maintenance shop, slab and turntable, overhead doors, exterior cladding and track work (Photo F).

Hyundai Rotem Company (HRC) work in Q2:

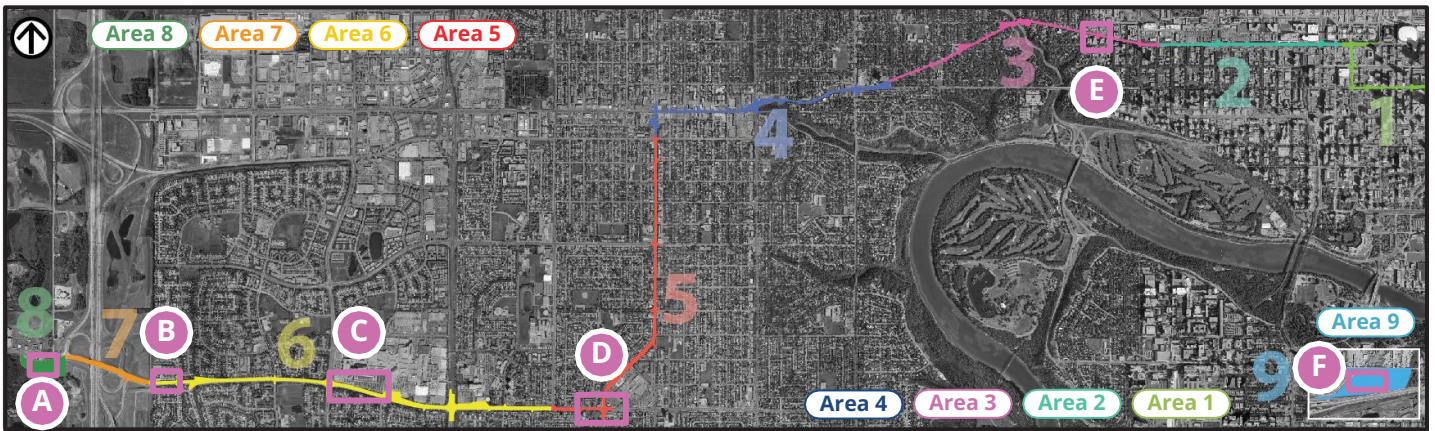
In **Q2 2025**, the first LRV was being readied for shipping by the end of June. City and CTP staff visited Korea to discuss testing and commissioning with HRC and to witness testing and LRV moving.



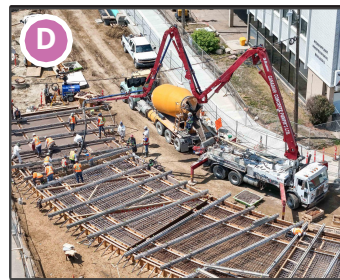
Area 8 - Lewis Farms Storage Facility Interior Work



Area 7 - Anthony Henday Drive LRT Bridge Construction



Area 6 - WEM Station Construction



Area 5 - Accelerated Roadwork at Meadowlark Road & 87 Avenue



Area 3 - Accelerated Roadwork at Stony Plain Road & 124 Street



Area 9 - Gerry Wright OMF-B Exterior Track Work

MILESTONES

AREA COMPLETED MILESTONES

		COMPLETION DATE
3	124 Street/SPR reopened to traffic after accelerated roadwork completion.	June 2025
4	156 Street/SPR driving lanes paved, concrete sidewalks and crosswalks poured.	June 2025
6	Misericordia Station installation of stairs 05 and 06 completed.	April 2025
8	Lewis Farms northeast storage area final grading completed.	April 2025
9	Slab and turntable poured, Overhead Catenary System (OCS) poles installed.	June 2025

AREA UPCOMING MILESTONES

AREA	UPCOMING MILESTONES	FORECASTED DATE
4 & 5	Accelerated roadwork at 142 Street/SPR, 156 Street/SPR, and 87 Avenue/Meadowlark Road reopening to traffic.	Q3 2025
6	Finish installing concrete spans for elevated guideway.	Q3 2025
LRV	First LRV arrives in Edmonton.	July 2025

KEY ACTIVITY 3-MONTH LOOK-AHEAD

The highlights correspond to the areas of the alignment on the map above.

Areas 1- 5: Various-stage roadwork, earthwork, removals, storm drainage, sanitary sewer, UC construction, duct banks, excavation and backfill.

Area 1: Start OCS foundation.

Area 2: Continue TPSS equipment, start track and rail install.

Area 3: Finish Glenora Stop platform concrete, start shelter. Finish TPSS install. Continue embedded track install.

Area 4: Start track and rail, TPSS cable and equipment install.

Area 5: Start perimeter wall, OCS foundation, track and rail work. Meadowlark and Glenwood/Sherwood Stops public art design submittals.

Area 6: Ongoing EG approaches, EG girders, WEM & Misericordia Stations, track work, Aldergrove Stop work.

Area 7: Finish railing, continue east approach & bridge construction. Finish OCS foundations, east approach panels.

Area 8: Curb & gutter, sidewalk, track work, interior work and fireproofing. Lewis Farms piling finished. Stop public art design submittals.

Area 9: Continue Gerry Wright OMF-B interior and exterior construction, track work, start elevator shaft construction. Public art design submittals.

LRVs: Construction & assembly of LRVs continues in South Korea. Arrival of first LRV in Edmonton is expected in July.