

PERFORMANCE

This dashboard provides an overview of progress and performance of the Valley Line West (VLW) LRT Project and a summary of work completed by Marigold Infrastructure Partners (MIP) and the City of Edmonton (City).

CUMULATIVE PERFORMANCE	NOTES
COST PERFORMANCE <i>Measures the cost efficiency of the project</i>	Current cost performance is good. The project remains on budget.
SCHEDULE PERFORMANCE <i>Measures the schedule status of the project</i>	As of the end of Q1, construction progress as measured by the independent certifier is 37.4%.
SCOPE PERFORMANCE <i>Measures the current status of scope changes compared to the baseline scope</i>	There have been no significant changes to either MIP's scope of work or other City-contracted scopes of work.
PUBLIC COMMUNICATIONS <i>Most common public inquiries for the period</i>	The most common public inquiries for the period are related to construction, traffic and potholes. In Q1 2025, the City launched a Valley Line West newsletter.

RECENT PROGRESS - SUMMARY

MIP work in Q1:

During **Q1 2025**, design and construction activities progressed across the VLW LRT alignment. Roadworks, drainage installations and Utility Complex (UC) construction were ongoing in **Areas 1-6**, including drainage work in **Area 2** along 104 Ave (Photo E). Work on the Lewis Farms Storage Facility continued in **Area 8**, with glazing nearing completion (Photo A). In **Area 7**, work on the Anthony Henday Drive (AHD) LRT bridge (Photo B) included east approach slab curb, diaphragm rebar, girders, deck joining, and west approach deck and curb work, along with preparation for special track work. In **Areas 4, 5, & 6**, TPSS were delivered to UC 42, 51 and 63. In **Area 6**, work continued on the Elevated Guideway, West Edmonton Mall Station, and Misericordia Station, with box girders being installed in the latter (Photo C). Construction of eastbound and westbound Grovenor Stop (Photo D) progressed in **Area 3**. In **Area 9**, construction continued at the Gerry Wright OMF-B, including rebar work and preparation for concrete. (Photo F).

Hyundai Rotem Company (HRC) work in Q1:

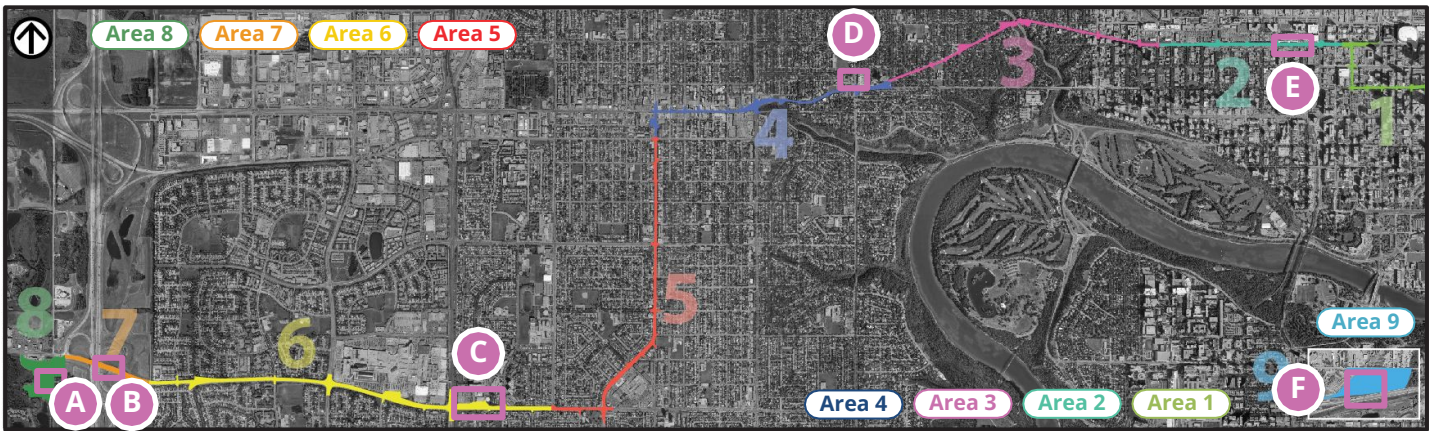
First LRV is currently undergoing factory testing, with expected completion and shipment in Q2 2025. Seven vehicles are under construction—three in outfitting, three in pre-outfitting, while LRV #2 has completed outfitting and is currently under inspection and bogie trucking process.



Area 8 - Lewis Farms Storage Facility glazing nearing completion



Area 7 - Anthony Henday Drive LRT Bridge Construction



Area 6 - Misericordia Station box girder installation



Area 3 - Grovenor Stop Construction



Area 2 - Drainage work progresses along 104 Ave



Area 9 - Interior rebar work at Gerry Wright OMF-B

MILESTONES

AREA	COMPLETED MILESTONES	COMPLETION DATE
4, 5, & 6	Traction Power Substation (TPSS) delivered to UC 42, 51, and 63	March 2025
2	Civil drainage completed portions of 104 Ave/108-118 St	March 2025
6	WEM Station escalator slab poured	January 2025
AREA	UPCOMING MILESTONES	FORECASTED DATE
4, 5	Accelerated intersection roadworks at 124 St/SPR and Meadowlark Rd/87 Ave	Q2 2025
4	Accelerated intersection roadworks at 156 St/SPR	Q3 2025
8	All elevated guideway concrete spans installed	Q4 2025
LRV	First LRV expected to be delivered to Edmonton	July 2025

KEY ACTIVITY 3-MONTH LOOK-AHEAD

The highlights correspond to the areas of the alignment on the map above.

Areas 1- 6: Continue roadworks and drainage, and UC construction. Construction ongoing at various stops.

Area 1: Telus vault construction. Start OCS foundations.

Area 2: Continue UC 21 construction.

Area 3: Start duct bank. Pour embedded track structure, rail installation. Pour track slab on SPR bridge.

Area 4: Continue duct bank and telecom connects.

Area 5: Start OCS foundation construction.

Area 6: Continue utility relocations and OCS foundations. Ongoing construction on elevated guideway east and west approach, WEM Station and Misericordia Station, and trackwork.

Area 7: Duct bank commissioning. Continue AHD bridge east approach abutment, sidewalk, railing construction. Continue OCS foundations and trackwork.

Area 8: Continue Lewis Farms Stop construction. Lewis Farms Storage Facility interior and exterior construction, trackwork, duct banks ongoing.

Area 9: Continue Gerry Wright OMF-B interior and exterior construction, trackwork, comms install in Building B.

LRVs: First LRV currently undergoing factory testing, expected completion and shipment in April.