

PERFORMANCE

This dashboard provides an overview of progress and performance of the Valley Line West (VLW) LRT Project and a summary of work completed by Marigold Infrastructure Partners (MIP) and the City of Edmonton (City).

CUMULATIVE PERFORMANCE	NOTES
COST PERFORMANCE <i>Measures the cost efficiency of the project</i>	Current cost performance is good. The project remains on budget.
SCHEDULE PERFORMANCE <i>Measures the schedule status of the project</i>	As of the end of Q4, construction progress as measured by the independent certifier is 34.5%.
SCOPE PERFORMANCE <i>Measures the current status of scope changes compared to the baseline scope</i>	There have been no significant changes to either MIP's scope of work or other City-contracted scopes of work.
PUBLIC COMMUNICATIONS <i>Most common public inquiries for the period</i>	The most common public inquiries for the period are related to construction, traffic, and access impacts.

RECENT PROGRESS - SUMMARY

MIP Work in Q4:

During Q4 2024, design and construction activities progressed across the VLW LRT alignment. Roadworks and drainage installations were ongoing in **Areas 1-6** and **8**. In **Area 8**, construction continued at the Lewis Farms Storage Facility (Photo A) including clerestory glazing, track slab works, and completion of exterior cladding on the north face. In **Area 7**, work on the Anthony Henday Drive (AHD) LRT bridge (Photo B) included approach slabs, piers, columns, and rebar and formwork. In **Area 6**, MIP continued work on the elevated guideway with art panels being installed (Photo C) on the approach ramp. Utility Complex (UC) construction was also underway in the area. Work on the Grovenor/142 Street Stop continued in **Area 4** (Photo D). In **Area 3**, Stony Plain Road (SPR) bridge (Photo E) opened to traffic. In **Area 9**, MIP continued construction on the Gerry Wright Operations & Maintenance Facility (OMF-B), including the installation of building floor slabs, insulated wall panel installation (Photo F) and pipeline crossing bridge work.

Hyundai Rotem Company (HRC) work in Q4:

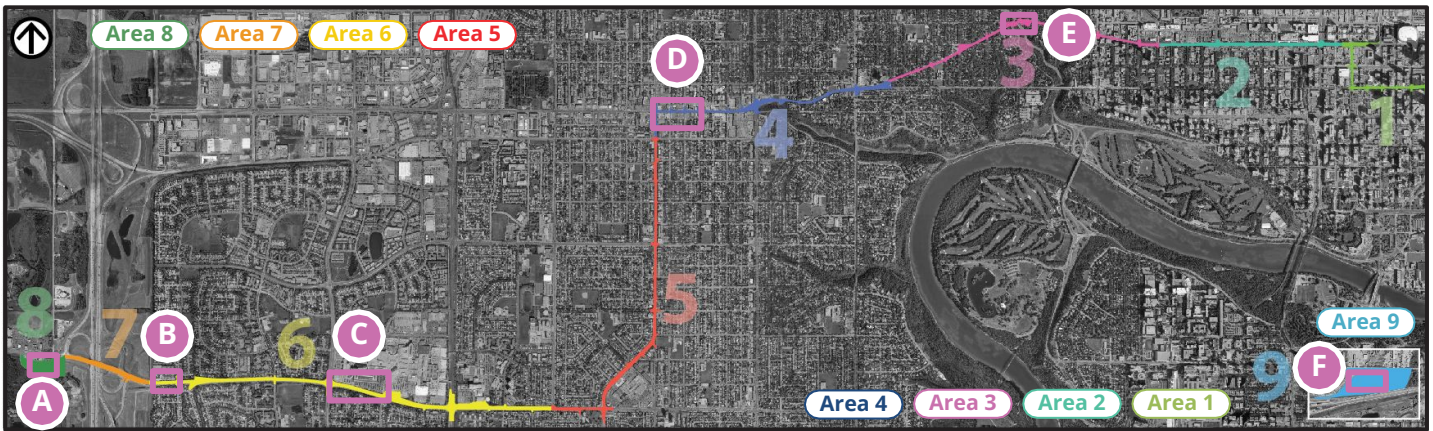
A total of seven light rail vehicles (LRV) are in manufacturing phase.



Area 8 - Lewis Farms Storage Facility Construction



Area 7: Anthony Henday Drive LRT Bridge Construction



Area 6: Elevated Guideway Art Panels



Area 4: Grovenor/142 Street Stop Construction Progress



Area 3: Stony Plain Road Bridge Opened to Traffic on November 30



Area 9: Gerry Wright OMF-B Wall Insulation

MILESTONES

AREA	COMPLETED MILESTONES	COMPLETION DATE
3	SPR Bridge opened to traffic	November 30, 2024
4	First Traction Power Substation delivered to site at SPR/144 Street Utility Complex	October 2024
9	First concrete pour for the OMF-B building floor slab	October 2024
AREA	UPCOMING MILESTONES	FORECASTED DATE
8	First concrete pour for the Lewis Farms Storage Facility floor slab	Q1 2025
LRV	First LRV factory testing and completion	Q1 2025

KEY ACTIVITY 3-MONTH LOOK-AHEAD

The highlights correspond to the areas of the alignment on the map above.

Areas 1-6: Continue Utility Complex construction.

Area 3: Pour embedded track structure and install rail. SPR bridge work: permanent bridge railing install to facilitate SUP reopening, and track slab works. Fabricate and deliver structural steel for Utility Complex.

Area 4: Continue Grovenor/142 St. Stop & duct bank construction.

Area 5: Fabricate and deliver structural steel for Utility Complex.

Area 6: Continue utility work, OCS foundations, Elevated Guideway construction, east & west approaches, abutment, wingwall, ramp, finishes. West Edmonton Mall (WEM) Station guideway deck work, box girder install, and superstructure. Continue Misericordia Station, Aldergrove Stop construction.

Area 7: Continue work at the Anthony Henday Drive bridge east approach, including girder, sidewalk & railing, and OCS foundations. East approach abutment construction. Main span east and west approach slab pours. Finish MSE wall construction.

Area 8: Continue insulated metal wall panels, vertical window installs, roofing, Lewis Farms Stop and Park & Ride, parking lot construction, track work, and OCS foundations, duct bank installs. Start Lewis Farms Storage Facility floor and slab works and rough-ins.

Area 9: At OMF-B, continue floor slab construction. Pipeline crossing bridge work. Duct bank works; secondary structural steel erection, roofing and wall cladding; retaining wall construction. Yard track structure sub ballast works.

LRVs: In addition to first LRV, six additional LRVs are being manufactured. First Article Inspections will occur throughout the period.