

# 2022 NEIGHBOURHOOD STUDY AREAS

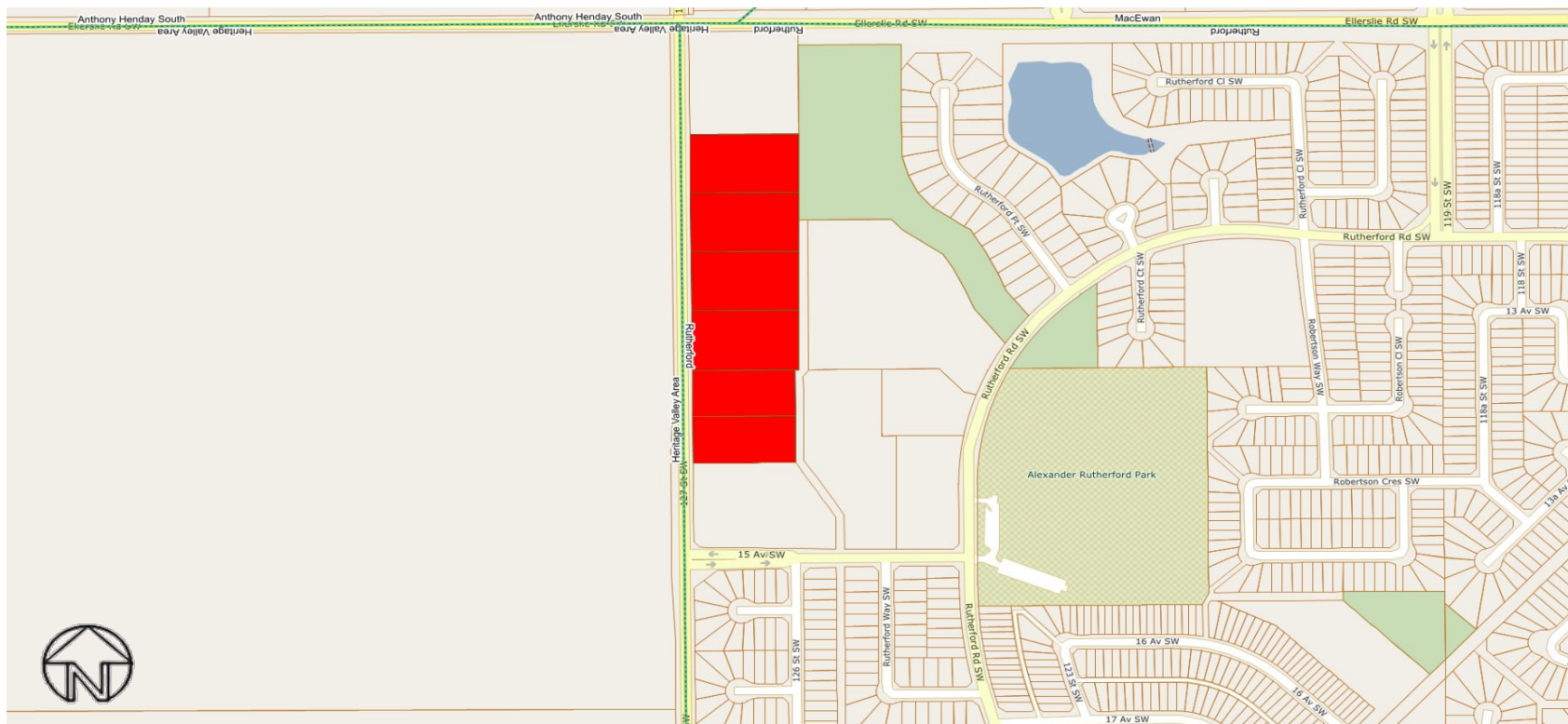
# RURAL RESIDENTIAL


## INDEX

<b>Study Area No.</b>	<b>Rural Residential Study Area (Neighbourhood)</b>	<b>Page No.</b>
3050	127th Street (Rutherford)	3
3051	Big Island Heights (River's Edge)	4
3052	Big Lake Estates (Kinglet Gardens)	5
3053	Cedar Ridge (Riverview Area)	6
3054	Donsdale (Donsdale)	7
3055	Fort Road (Rural North East Horse Hill)	8
3056	Guthrie Estates (Riverview Area)	9
3057	Hawthorne Hill (Riverview Area)	9
3058	Hillview Park (Rural North East Horse Hill)	10
3059	Horse Hills and Tipperary (Rural North East Horse Hill)	10
3060	Hurstwood Park (Maple Ridge Industrial, SE Industrial)	11
3061	Johnson's Road (Edmonton Energy and Technology Park)	12
3062	Lewis Farms (Lewis Farms Industrial)	13
3063	Mooncrest Park (Kinokamau Plains Area)	14
3064	Oliver Gardens (Rural North East South Sturgeon)	15
3065	Patricia Heights (Patricia Heights)	16
3066	Quarry Ridge Phase 1 (Rural North East South Sturgeon)	15
3067	Quarry Ridge Phase 2 (Rural North East South Sturgeon)	15
3068	Rendek Ranch (Riverview Area)	9
3069	Richford Estates (Richford, Blackmud Creek Ravine)	17
3070	Rimrock Estates (Ellerslie)	18
3071	Riverside Heights (River's Edge)	19
3072	Riverview Acres (Riverview Area)	9
3073	River Valley Country Estates (Riverview Area)	9
3074	River Valley Isolated (various neighbourhoods)	19
3075	Ellerslie Road / 34 Street (Decoteau)	21
3076	Sharonden Ravines (Riverview Area)	9
3077	South Sturgeon (Rural North East South Sturgeon)	8

3078	Triple A Acres (Edgemont)	22
3079	Ward Heights / Reppert Heights (Decoteau)	23
3080	Wedgewood (Wedgewood Heights)	7
3081	Wernerville (Ellerslie)	18
3082	West Point Estates (Windermere/River Valley Windermere/Keswick)	24
3083	Windermere Estates (Windermere/River Valley Windermere)	25
3084	Windermere Ridge (Windermere)	24
3085	Woodbend Estates (Edgemont / The Uplands)	26
3086	Quarry Ridge Phase 3 (Rural North East South Sturgeon)	15
3088	Allard (Allard)	27
3089	Carlton (Carlton)	28
3248	Creek View Estates	29
3249	Country Lakes	30

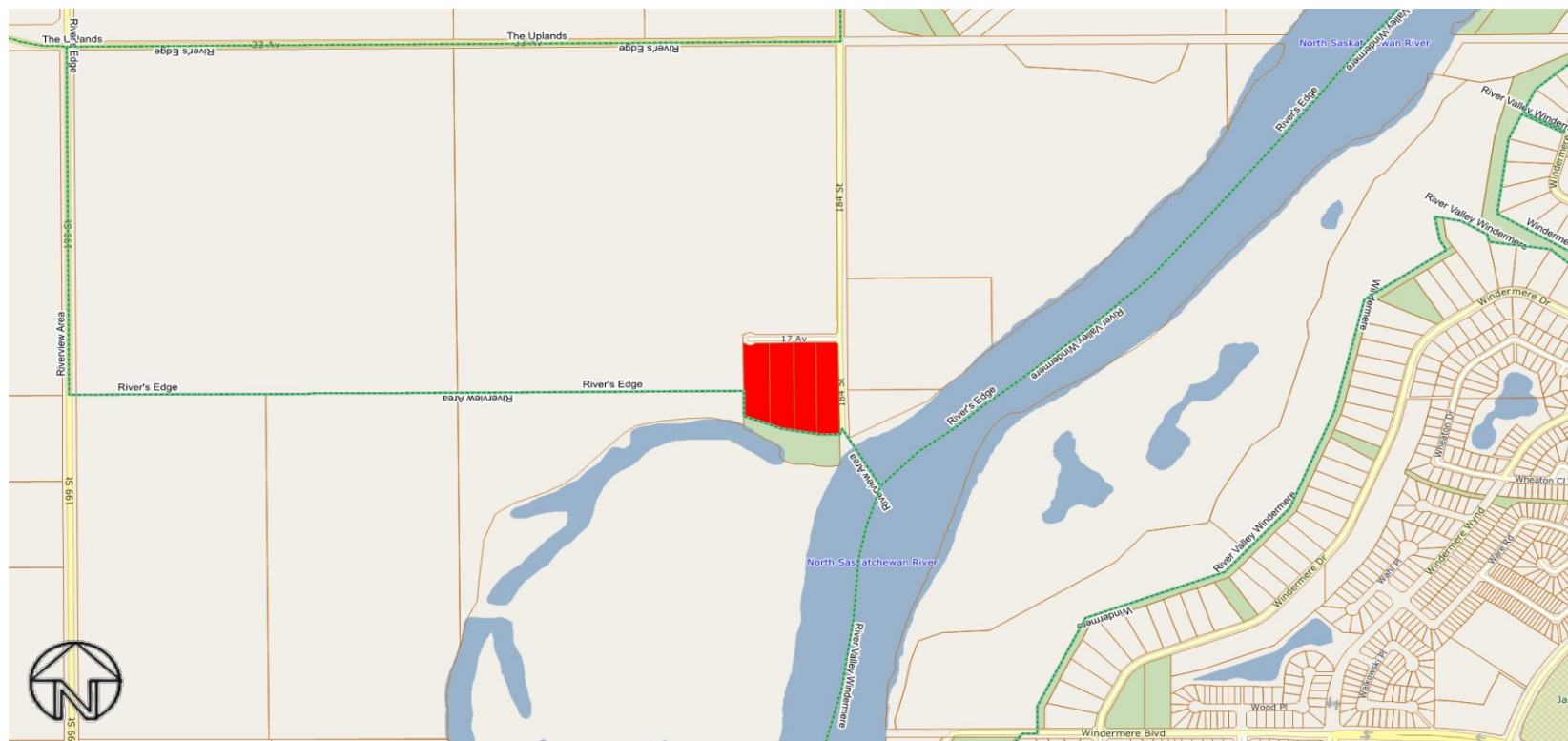
# Rural Residential Study Area – Rutherford Neighbourhood




 127th Street (3050)

The information provided by this map is for reference purpose only. The City of Edmonton disclaims any liability for the use of this map. This map may not be published, broadcast, redrawn or redistributed in whole or in part without the express written permission of the City of Edmonton, Financial and Corporate Services Department. All rights reserved. Copyright © 2021 The City of Edmonton

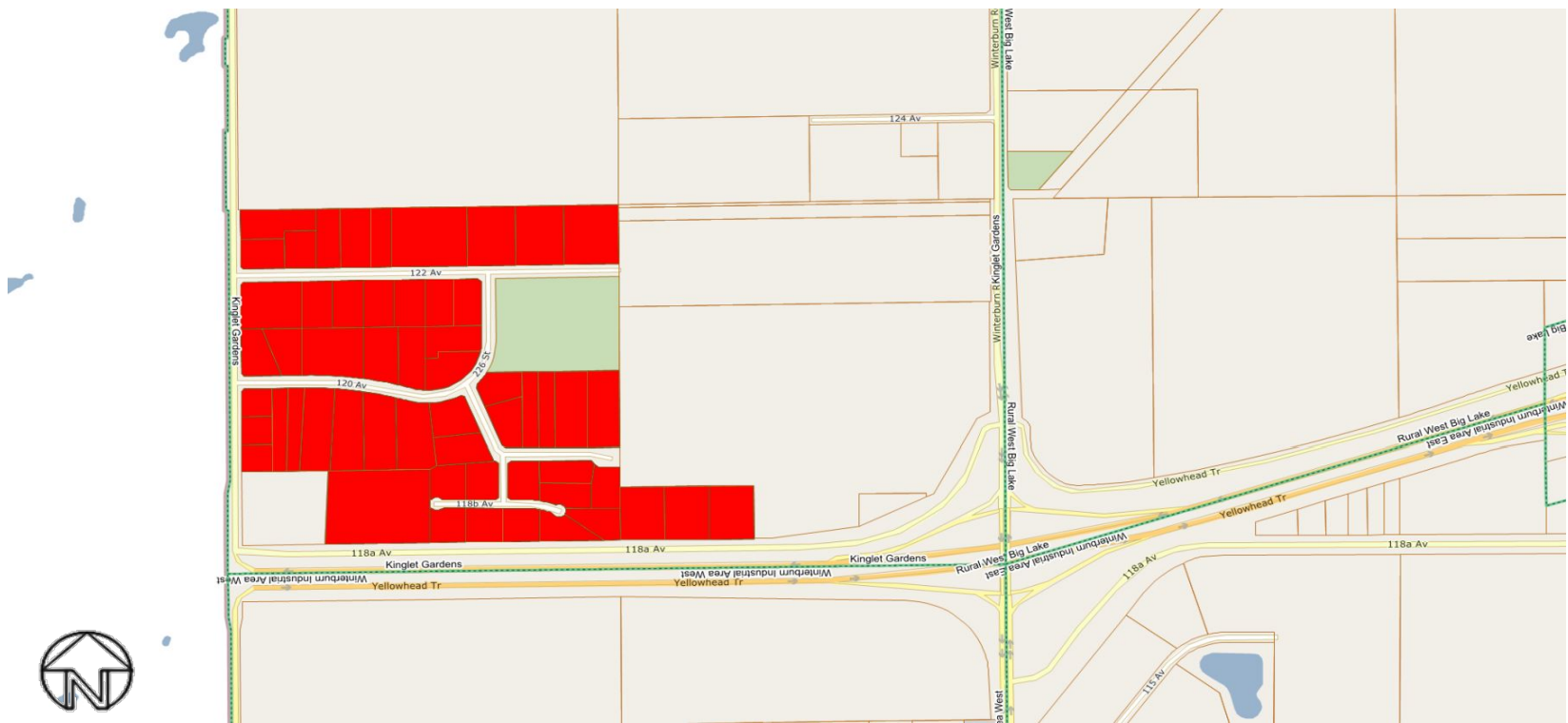
# Rural Residential Study Area – River's Edge Neighbourhood



 Big Island Heights (3051)

The information provided by this map is for reference purpose only. The City of Edmonton disclaims any liability for the use of this map. This map may not be published, broadcast, redrawn or redistributed in whole or in part without the express written permission of the City of Edmonton, Financial and Corporate Services Department. All rights reserved. Copyright © 2021 The City of Edmonton

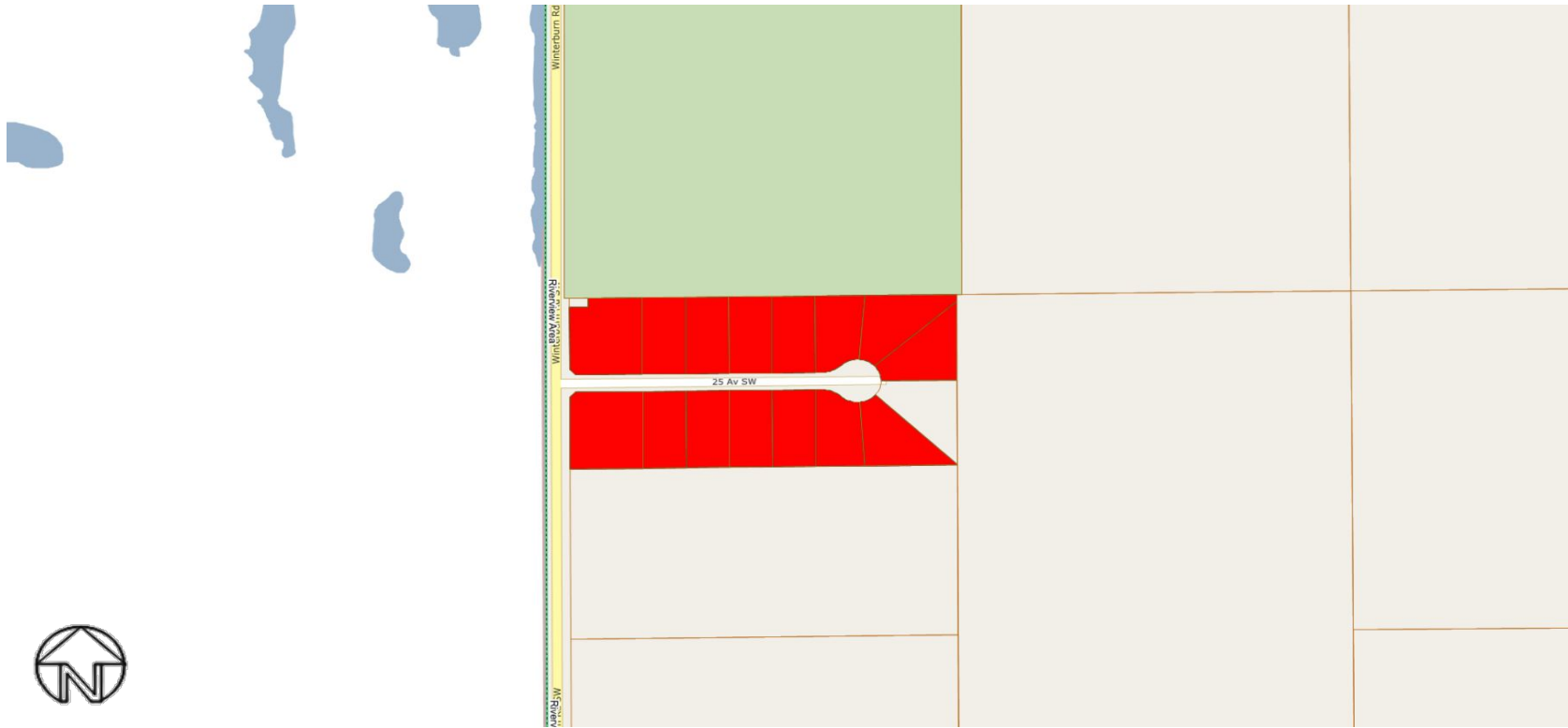
# Rural Residential Study Area – Kinglet Gardens Neighbourhood




 Big Lake Estates (3052)

The information provided by this map is for reference purpose only. The City of Edmonton disclaims any liability for the use of this map. This map may not be published, broadcast, redrawn or redistributed in whole or in part without the express written permission of the City of Edmonton, Financial and Corporate Services Department. All rights reserved. Copyright © 2021 The City of Edmonton

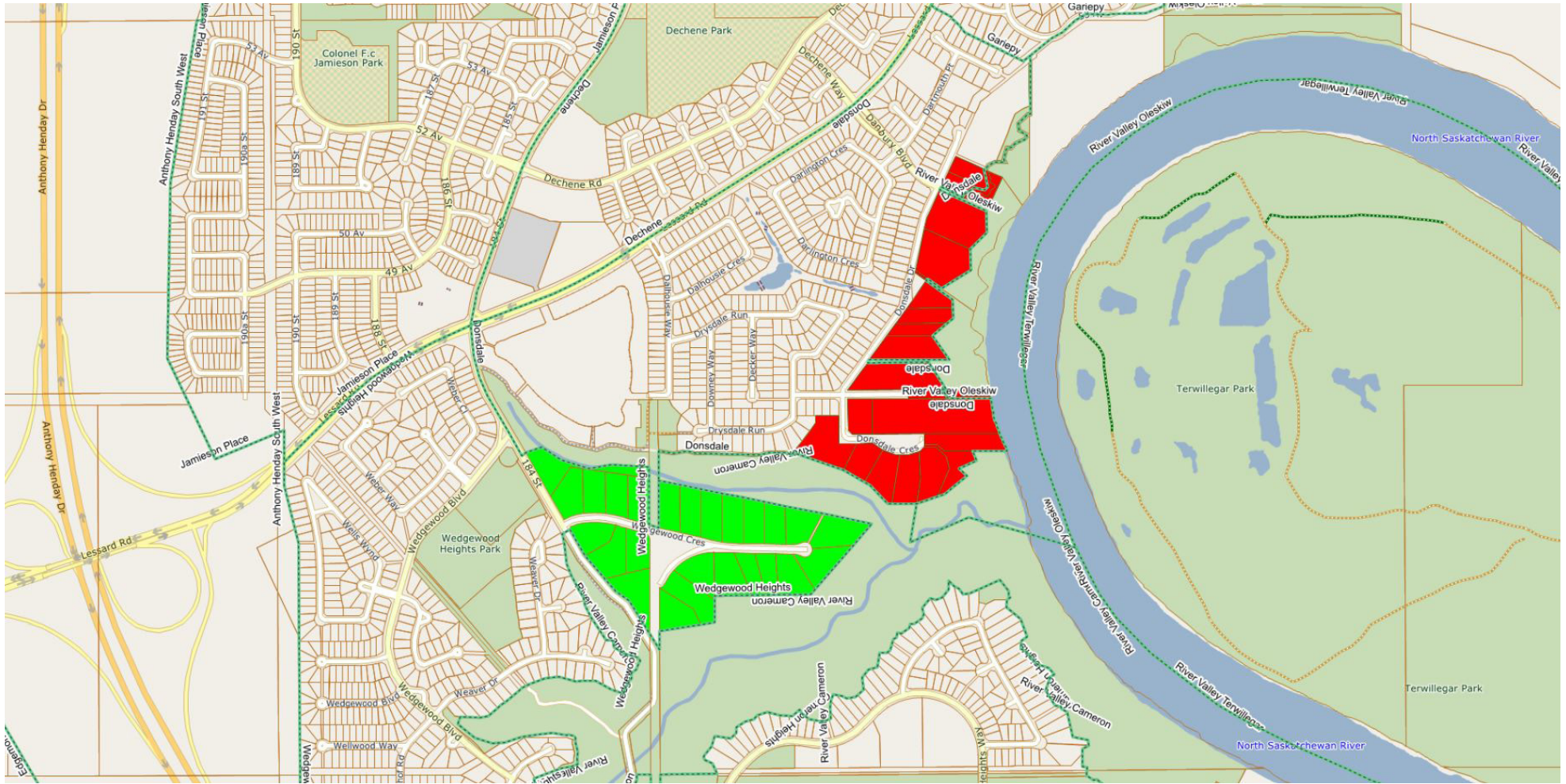
# Rural Residential Study Area – Riverview Area Neighbourhood




 Cedar Ridge (3053)



# Rural Residential Study Area – Donsdale and Wedgewood Heights Neighbourhood

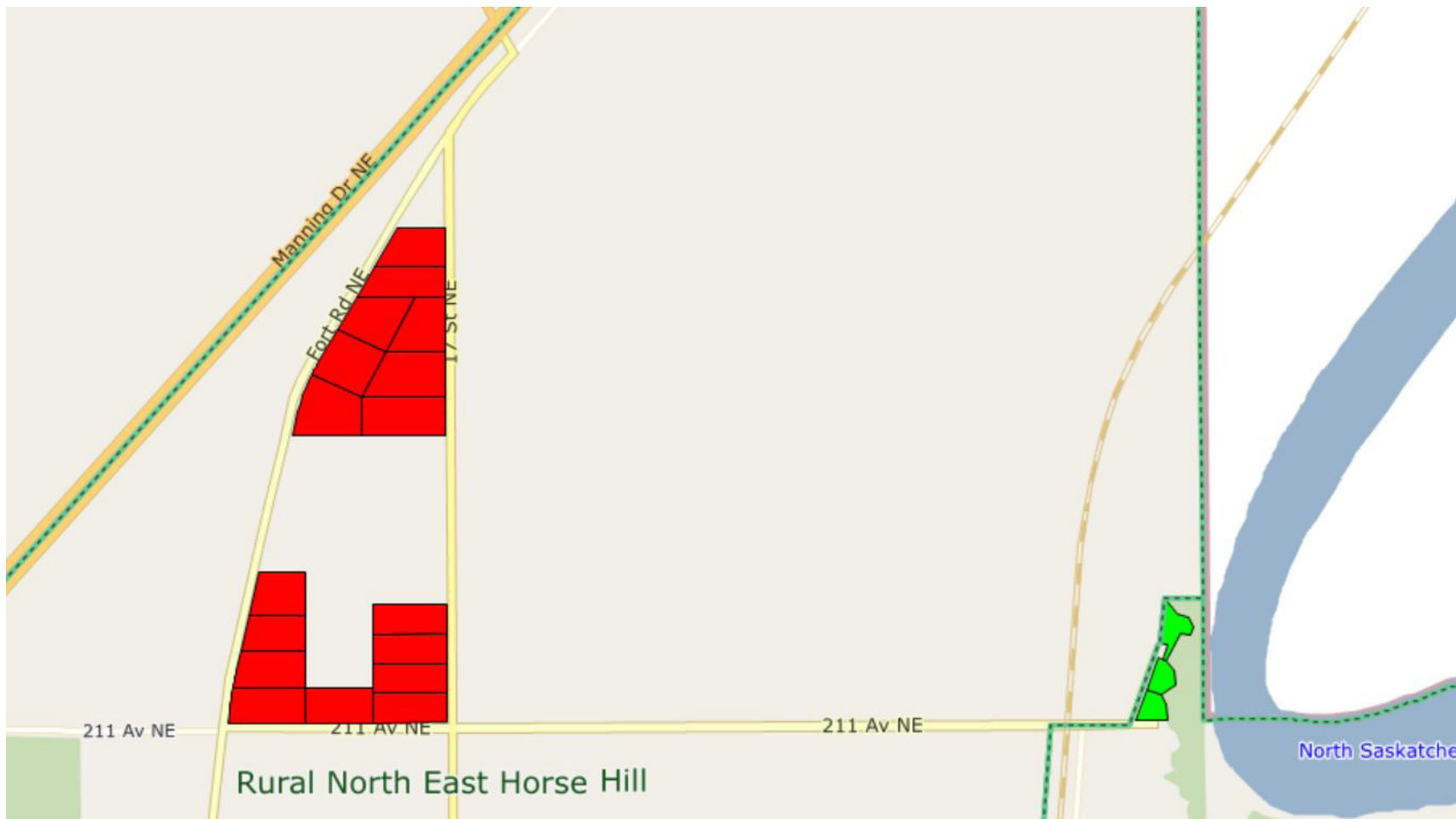


 Donsdale (3054)


 Wedgewood (3080)

The information provided by this map is for reference purpose only. The City of Edmonton disclaims any liability for the use of this map. This map may not be published, broadcast, redrawn or redistributed in whole or in part without the express written permission of the City of Edmonton, Financial and Corporate Services Department. All rights reserved. Copyright © 2021 The City of Edmonton

# Rural Residential Study Area – Rural North East Horse Hill/Rural North East South Sturgeon Neighbourhoods



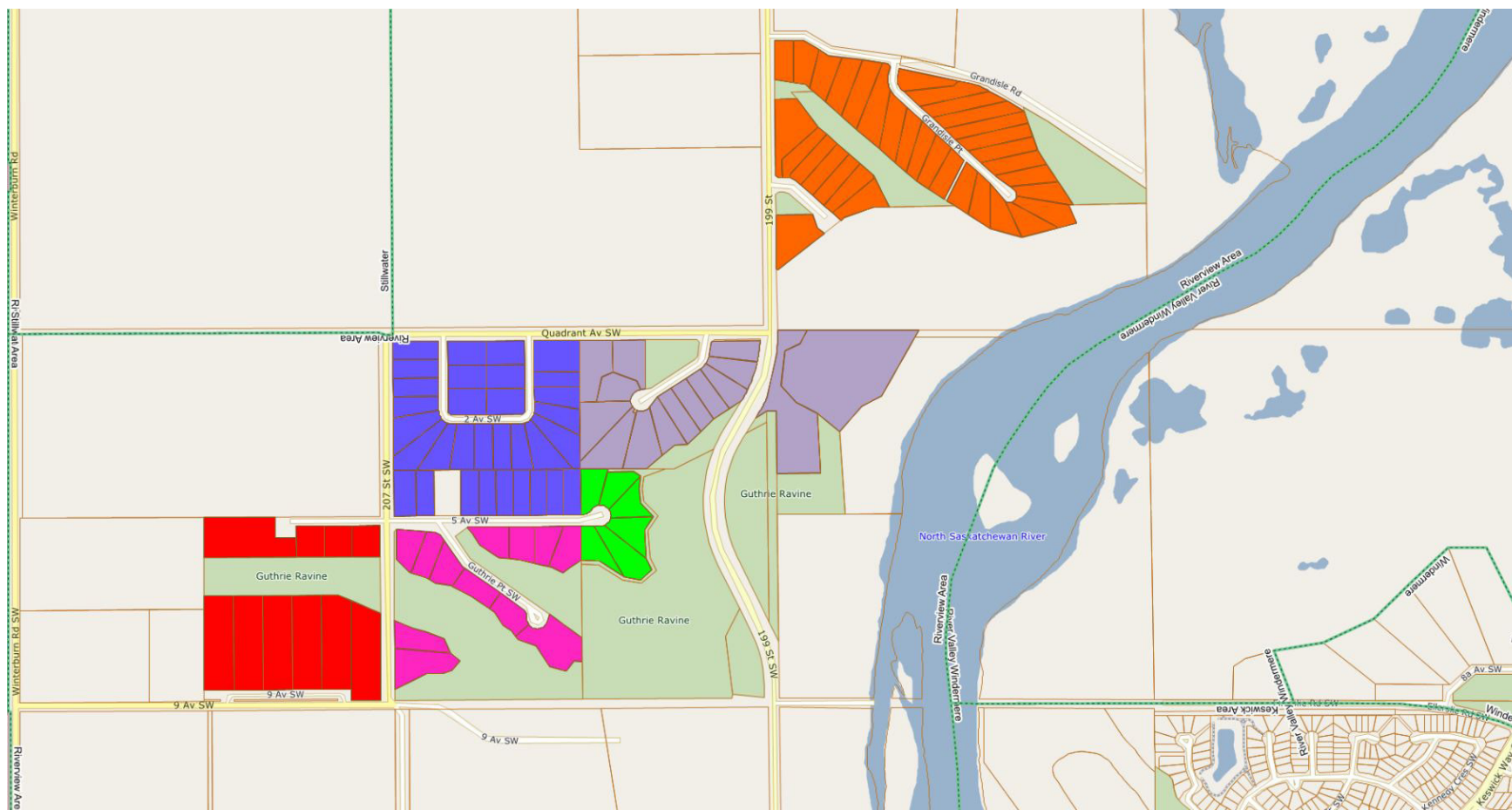
 Fort Road (3055)

 South Sturgeon (3077)

The information provided by this map is for reference purpose only. The City of Edmonton disclaims any liability for the use of this map. This map may not be published, broadcast, redrawn or redistributed in whole or in part without the express written permission of the City of Edmonton, Financial and Corporate Services Department. All rights reserved. Copyright © 2021 The City of Edmonton



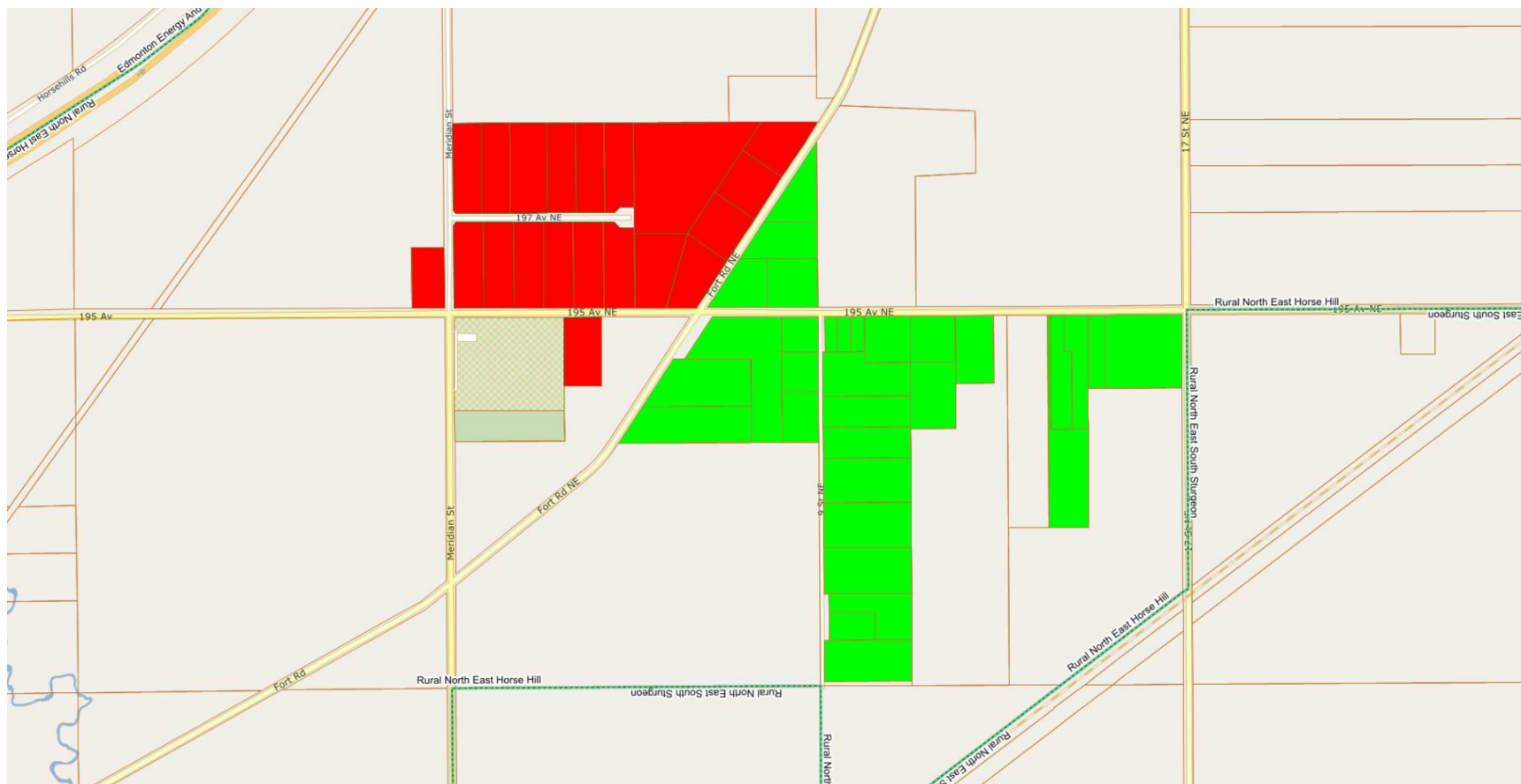
# Rural Residential Study Area – Riverview Area Neighbourhood





- |  |   |
|--|---|
| <span style="display: inline-block; width: 20px; height: 15px; background-color: red; border: 1px solid black; margin-right: 5px;"></span> Guthrie Estates (3056)  | <span style="display: inline-block; width: 20px; height: 15px; background-color: purple; border: 1px solid black; margin-right: 5px;"></span> Riverview Acres (3072)              |
| <span style="display: inline-block; width: 20px; height: 15px; background-color: green; border: 1px solid black; margin-right: 5px;"></span> Hawthorne Hill (3057) | <span style="display: inline-block; width: 20px; height: 15px; background-color: orange; border: 1px solid black; margin-right: 5px;"></span> River Valley Country Estates (3073) |
| <span style="display: inline-block; width: 20px; height: 15px; background-color: blue; border: 1px solid black; margin-right: 5px;"></span> Rendek Ranch (3068)    | <span style="display: inline-block; width: 20px; height: 15px; background-color: magenta; border: 1px solid black; margin-right: 5px;"></span> Sharonden Ravines (3076)           |

The information provided by this map is for reference purpose only. The City of Edmonton disclaims any liability for the use of this map. This map may not be published, broadcast, redrawn or redistributed in whole or in part without the express written permission of the City of Edmonton, Financial and Corporate Services Department. All rights reserved. Copyright © 2021 The City of Edmonton

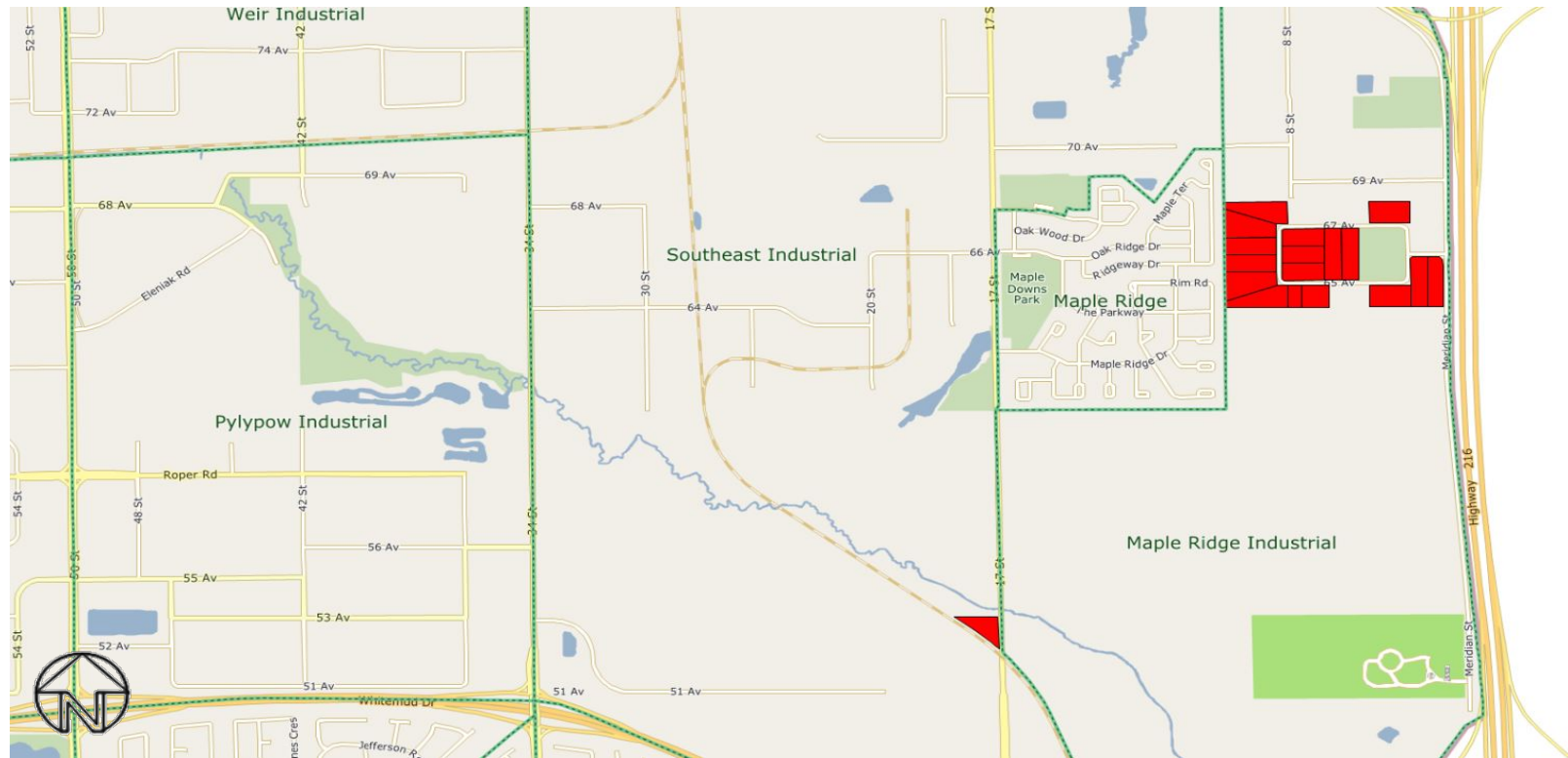
## Rural Residential Study Area – Rural North East Horse Hill Neighbourhood




-  Hillview Park (3058)
-  Horse Hill and Tipperary (3059)

The information provided by this map is for reference purpose only. The City of Edmonton disclaims any liability for the use of this map. This map may not be published, broadcast, redrawn or redistributed in whole or in part without the express written permission of the City of Edmonton, Financial and Corporate Services Department. All rights reserved. Copyright © 2021 The City of Edmonton

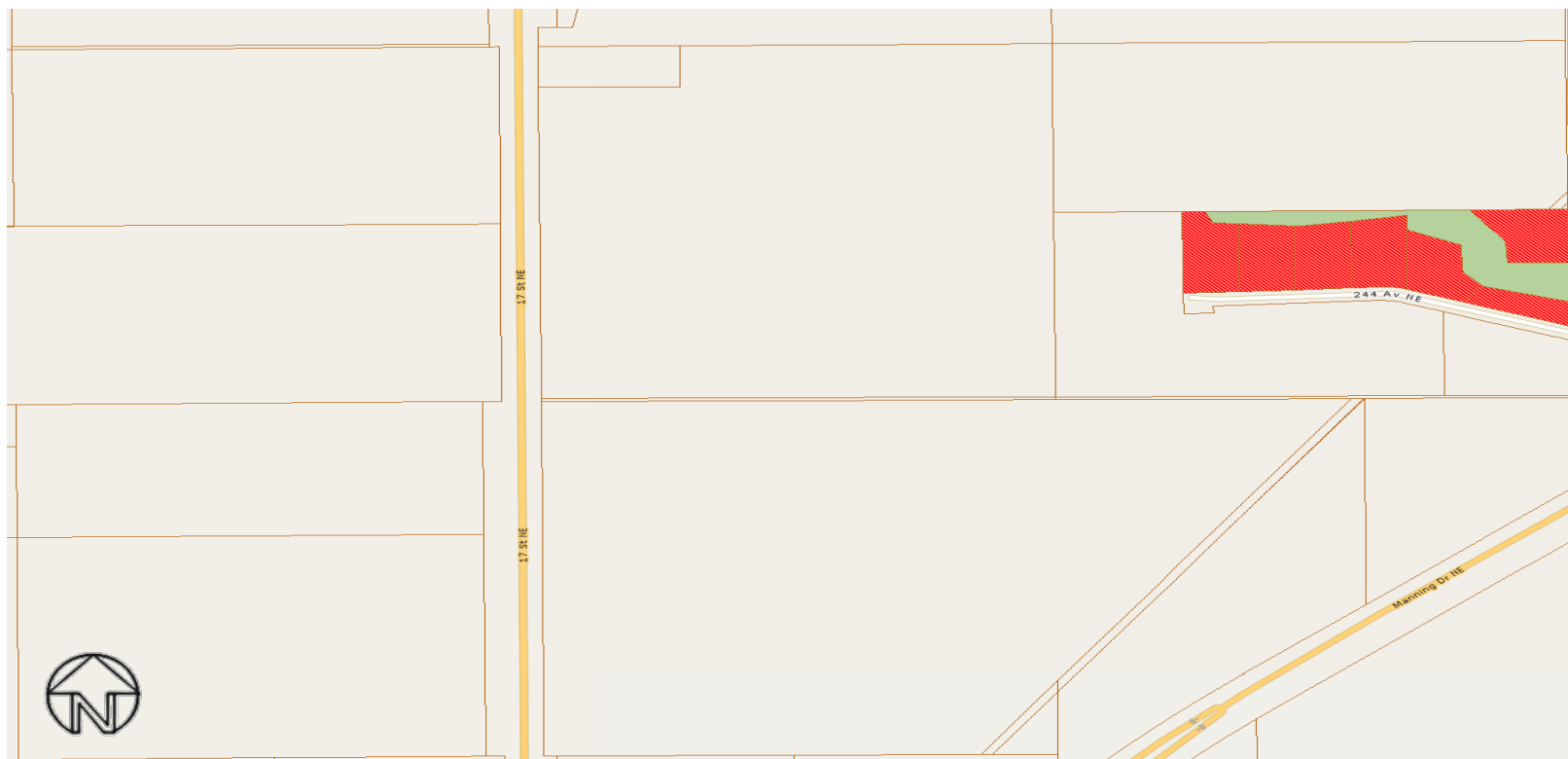
# Rural Residential Study Area – Maple Ridge Industrial and Southeast (Annexed) Industrial Neighbourhoods



 Hurstwood Park (3060)

The information provided by this map is for reference purpose only. The City of Edmonton disclaims any liability for the use of this map. This map may not be published, broadcast, redrawn or redistributed in whole or in part without the express written permission of the City of Edmonton, Financial and Corporate Services Department. All rights reserved. Copyright © 2021 The City of Edmonton

# Rural Residential Study Area – Edmonton Energy and Technology Park Neighbourhood

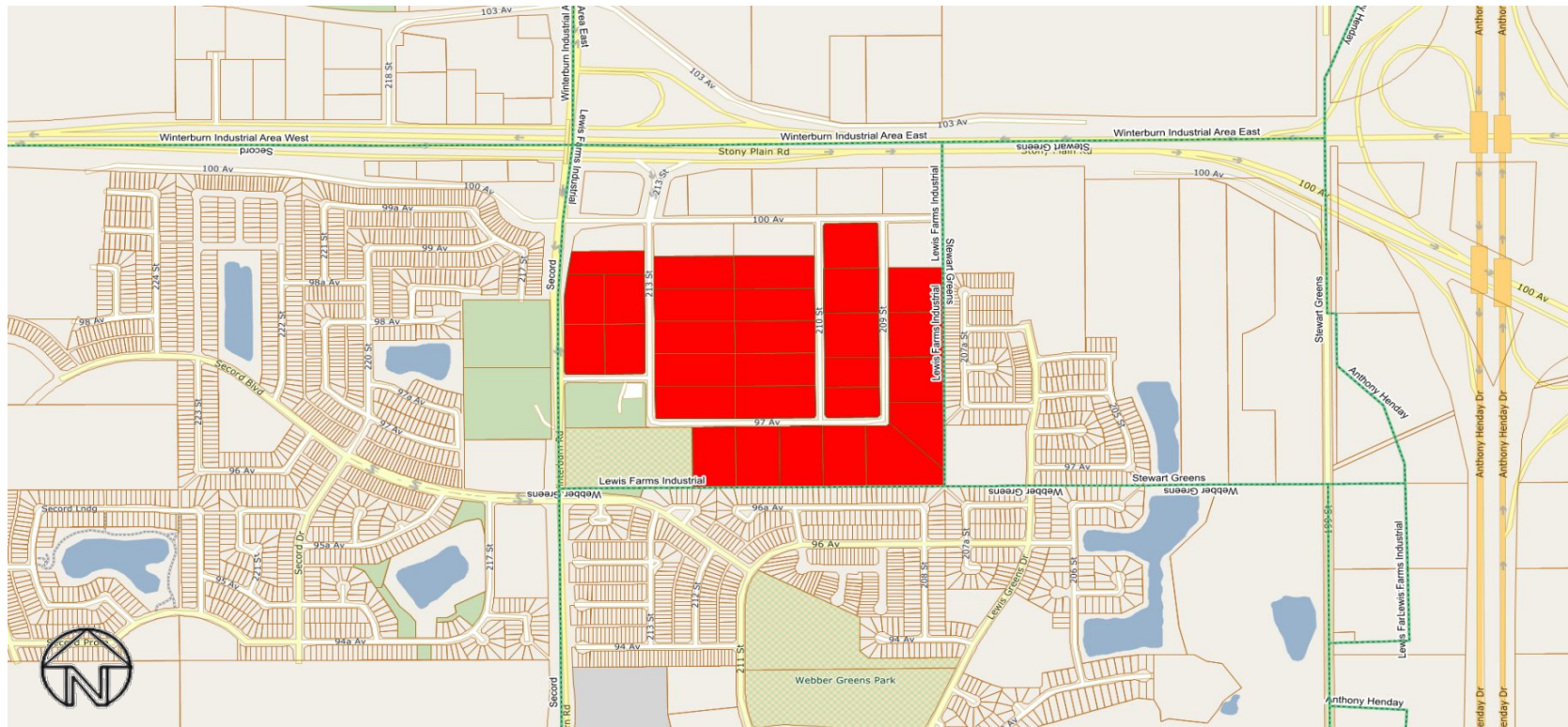


 Johnson's Road (3061)

The information provided by this map is for reference purpose only. The City of Edmonton disclaims any liability for the use of this map. This map may not be published, broadcast, redrawn or redistributed in whole or in part without the express written permission of the City of Edmonton, Financial and Corporate Services Department. All rights reserved. Copyright © 2021 The City of Edmonton



# Rural Residential Study Area – Lewis Farms Industrial Neighbourhood

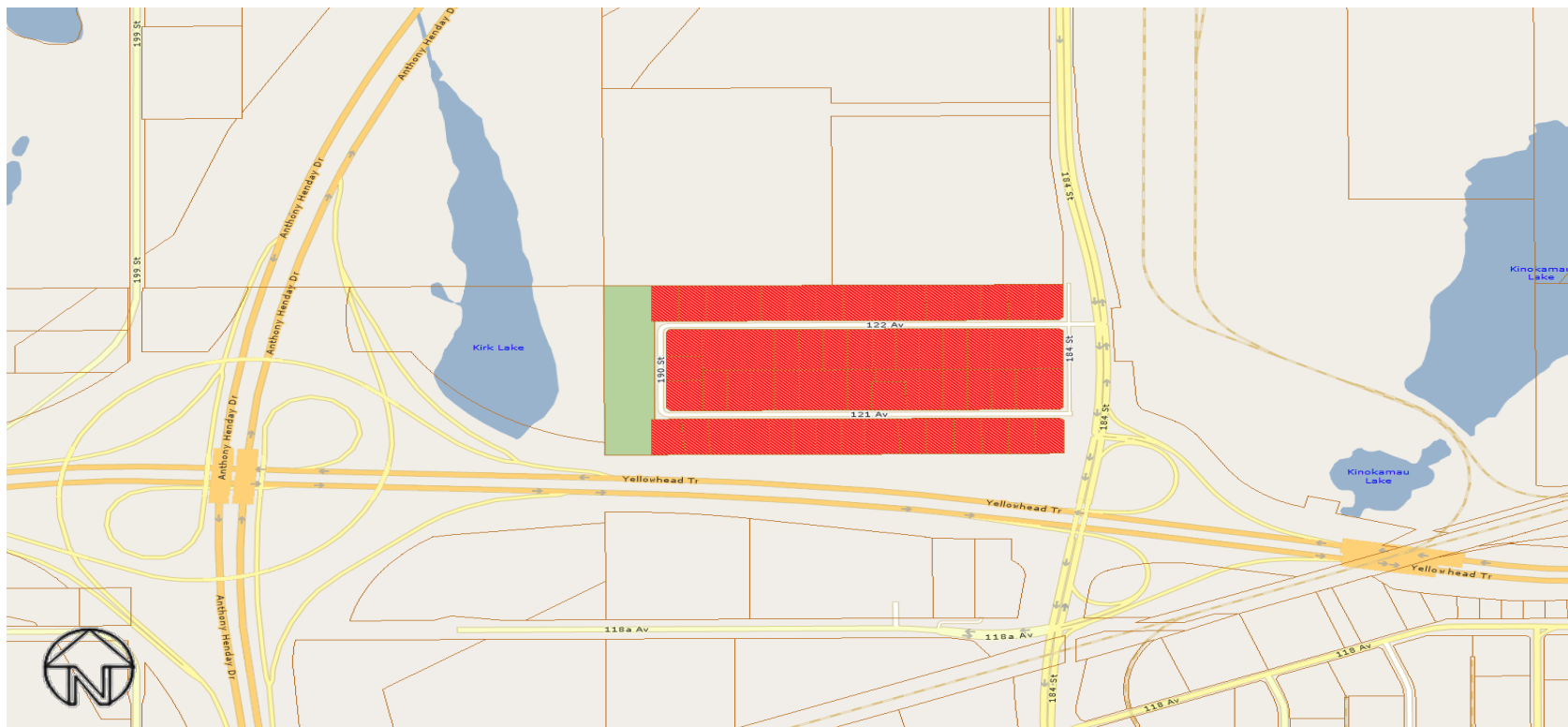


 Lewis Farms (3062)

The information provided by this map is for reference purpose only. The City of Edmonton disclaims any liability for the use of this map. This map may not be published, broadcast, redrawn or redistributed in whole or in part without the express written permission of the City of Edmonton, Financial and Corporate Services Department. All rights reserved. Copyright © 2021 The City of Edmonton



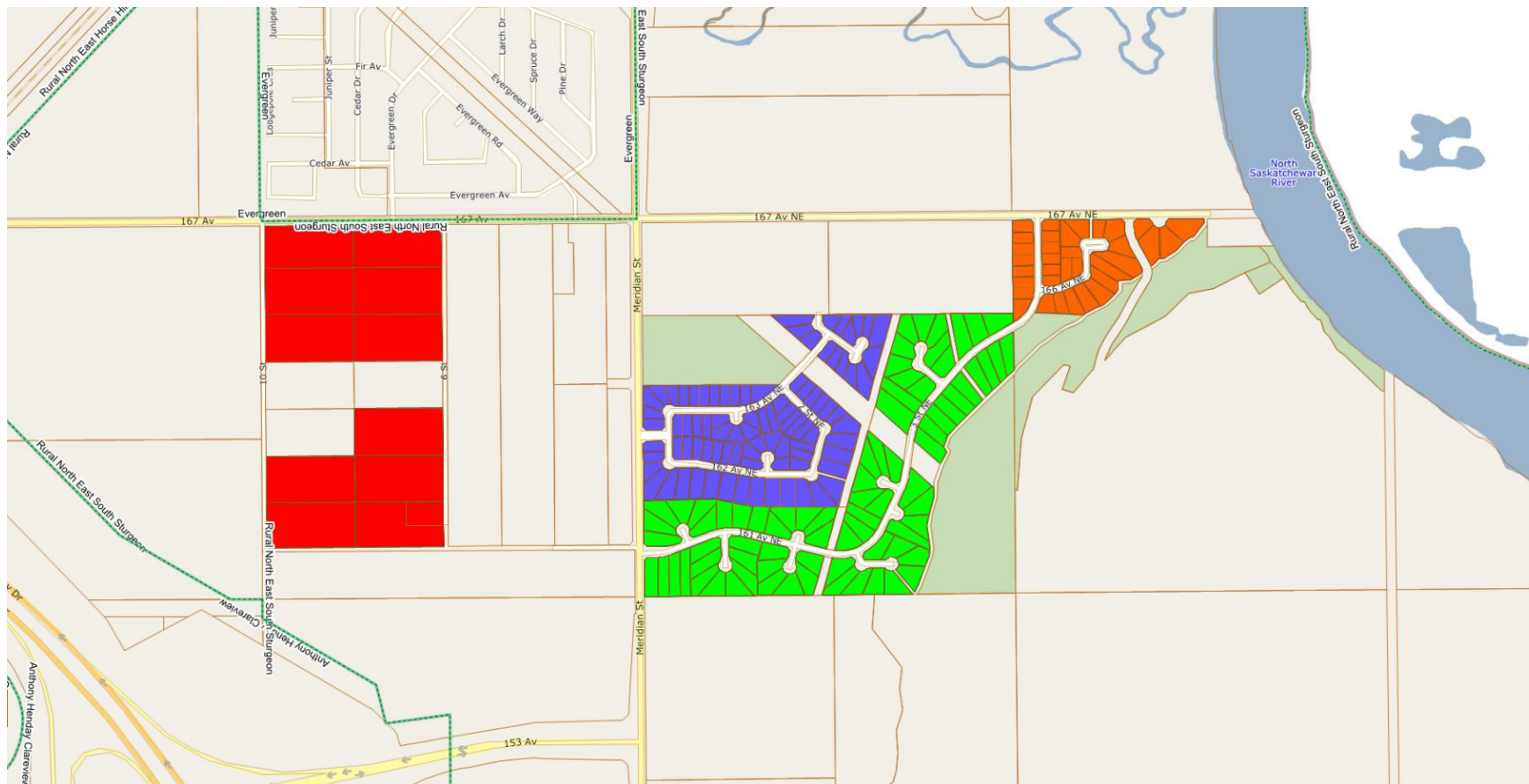
## Rural Residential Study Area – Kinokamau Plains Area Neighbourhood



 Mooncrest Park (3063)

The information provided by this map is for reference purpose only. The City of Edmonton disclaims any liability for the use of this map. This map may not be published, broadcast, redrawn or redistributed in whole or in part without the express written permission of the City of Edmonton, Financial and Corporate Services Department. All rights reserved. Copyright © 2021 The City of Edmonton

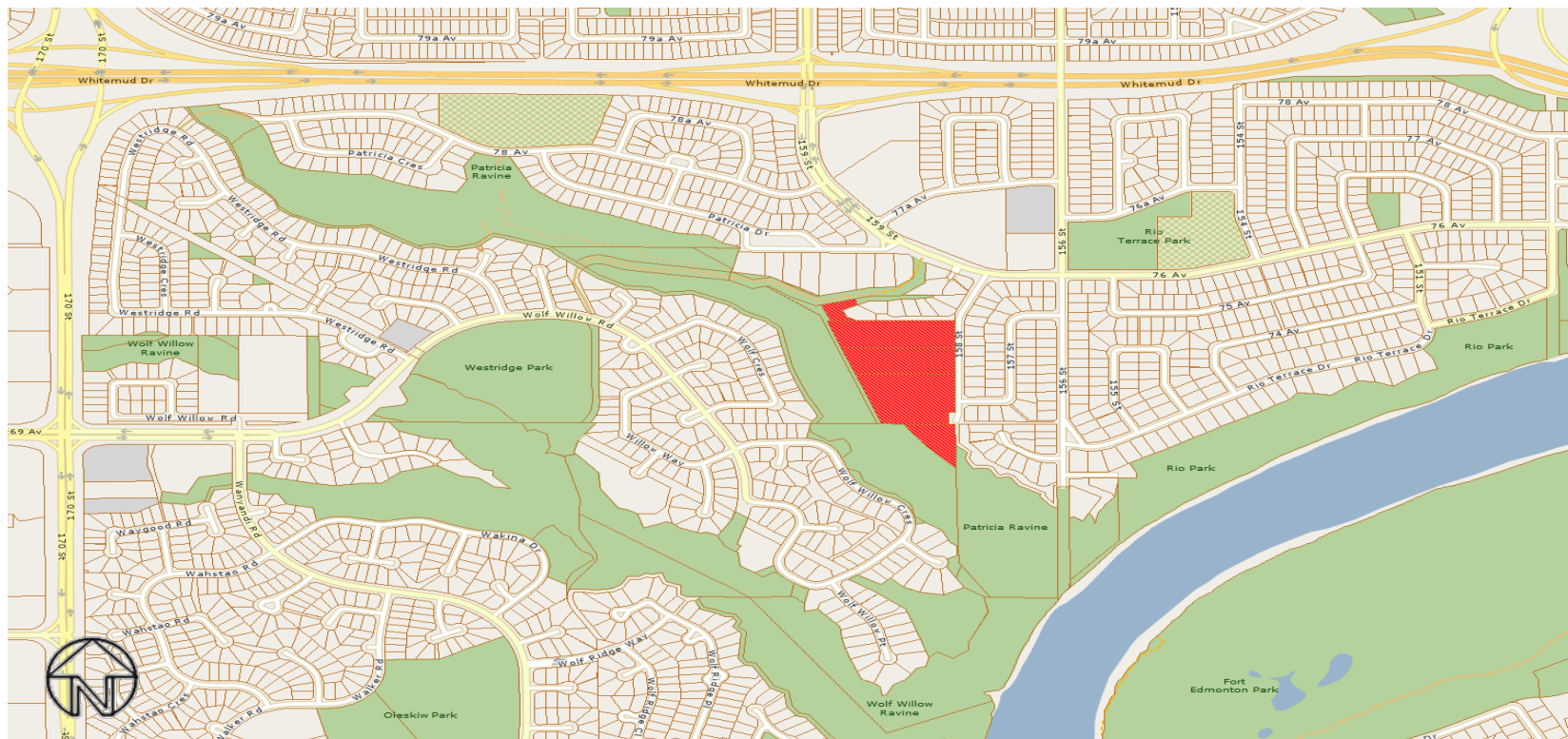
# Rural Residential Study Area – Rural North East South Sturgeon Neighbourhood



- Oliver Gardens (3064)
- Quarry Ridge Phase 1 (3066)
- Quarry Ridge Phase 2 (3067)
- Quarry Ridge Phase 3 (3086)

The information provided by this map is for reference purpose only. The City of Edmonton disclaims any liability for the use of this map. This map may not be published, broadcast, redrawn or redistributed in whole or in part without the express written permission of the City of Edmonton, Financial and Corporate Services Department. All rights reserved. Copyright © 2021 The City of Edmonton

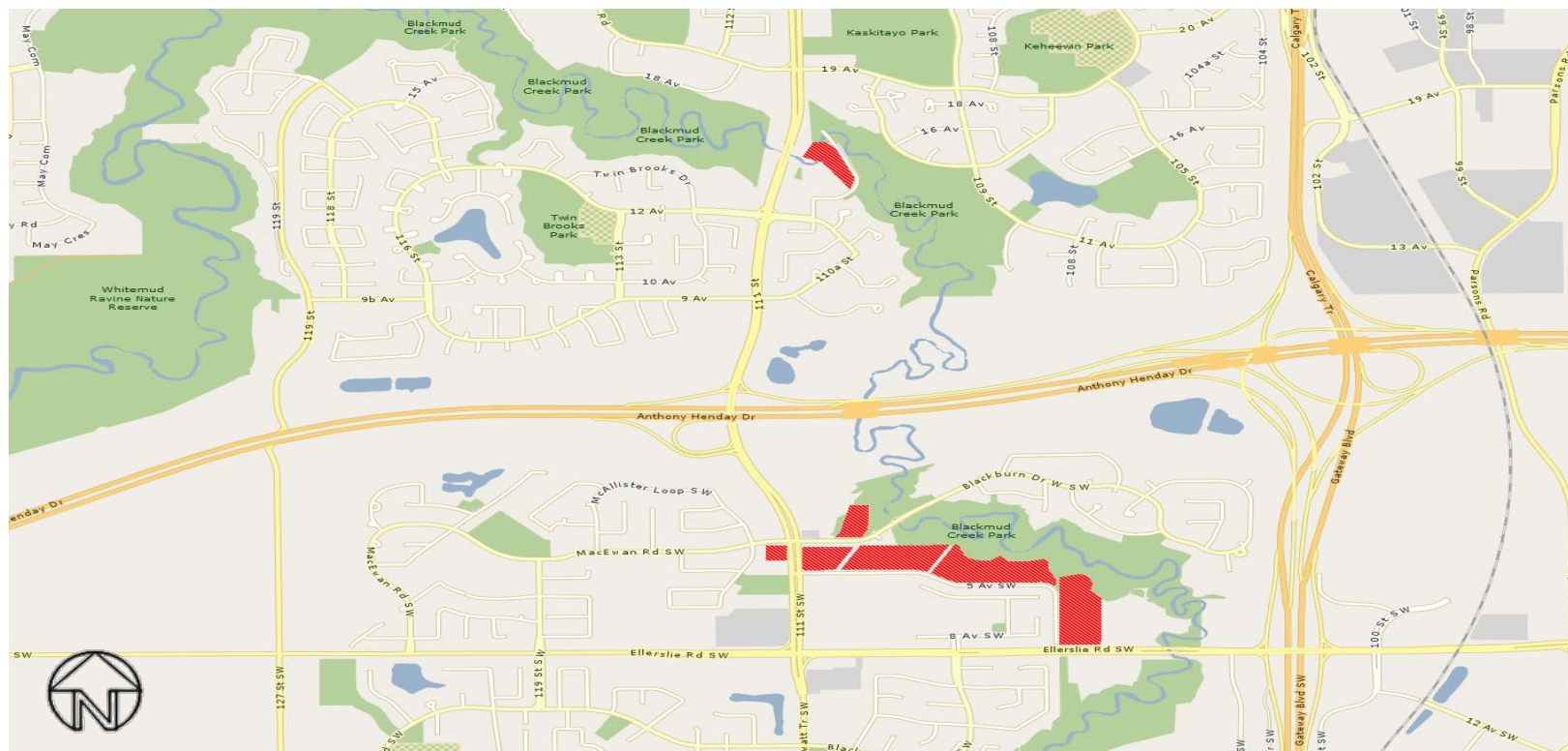
# Rural Residential Study Area – Patricia Heights Neighbourhood




 Patricia Heights (3065)

The information provided by this map is for reference purpose only. The City of Edmonton disclaims any liability for the use of this map. This map may not be published, broadcast, redrawn or redistributed in whole or in part without the express written permission of the City of Edmonton, Financial and Corporate Services Department. All rights reserved. Copyright © 2021 The City of Edmonton

## Rural Residential Study Area – Richford and Blackmud Creek Ravine Neighbourhoods

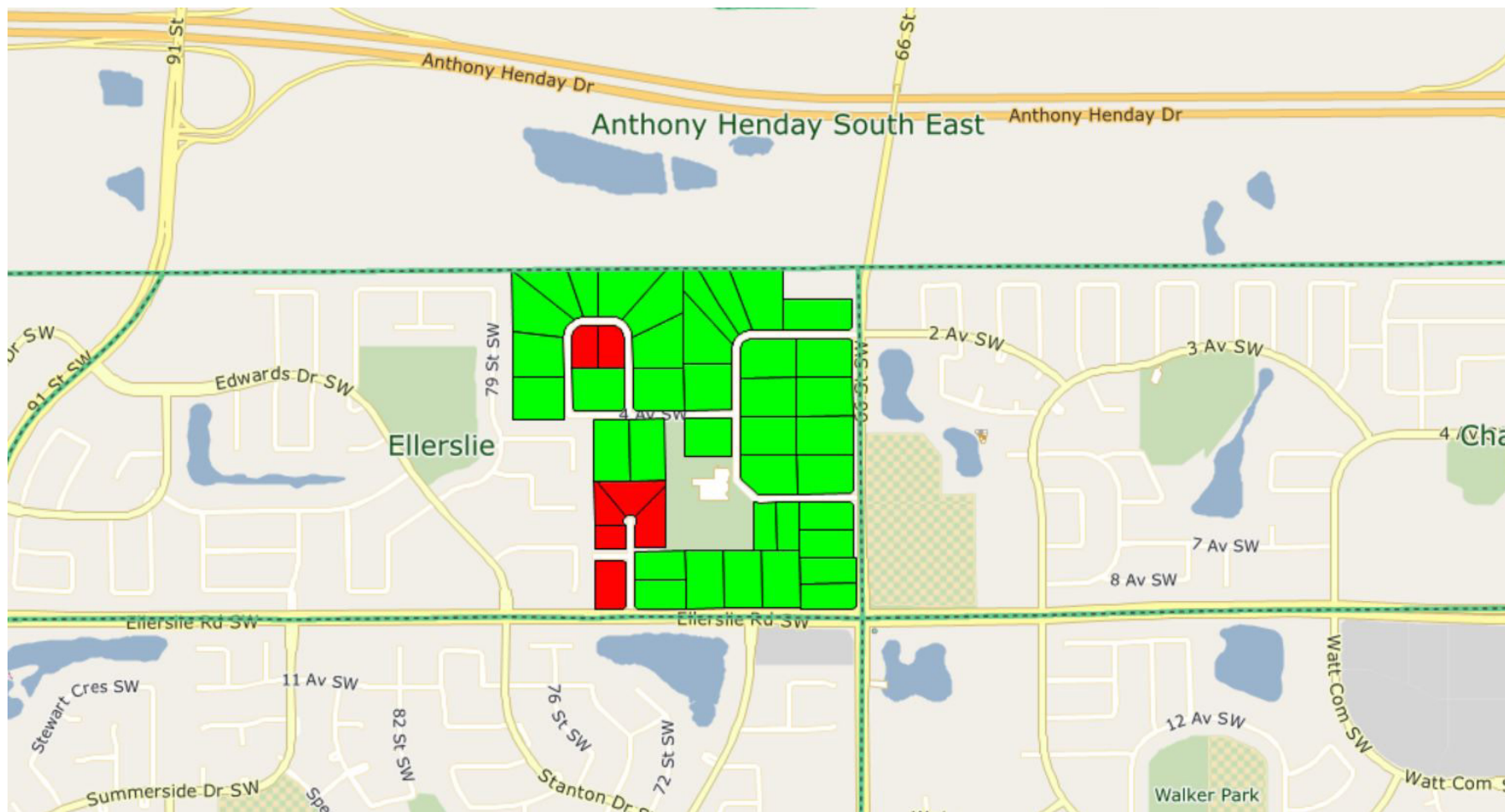




 Richford Estates (3069)

The information provided by this map is for reference purpose only. The City of Edmonton disclaims any liability for the use of this map. This map may not be published, broadcast, redrawn or redistributed in whole or in part without the express written permission of the City of Edmonton, Financial and Corporate Services Department. All rights reserved. Copyright © 2021 The City of Edmonton



## Rural Residential Study Area – Ellerslie Neighbourhood

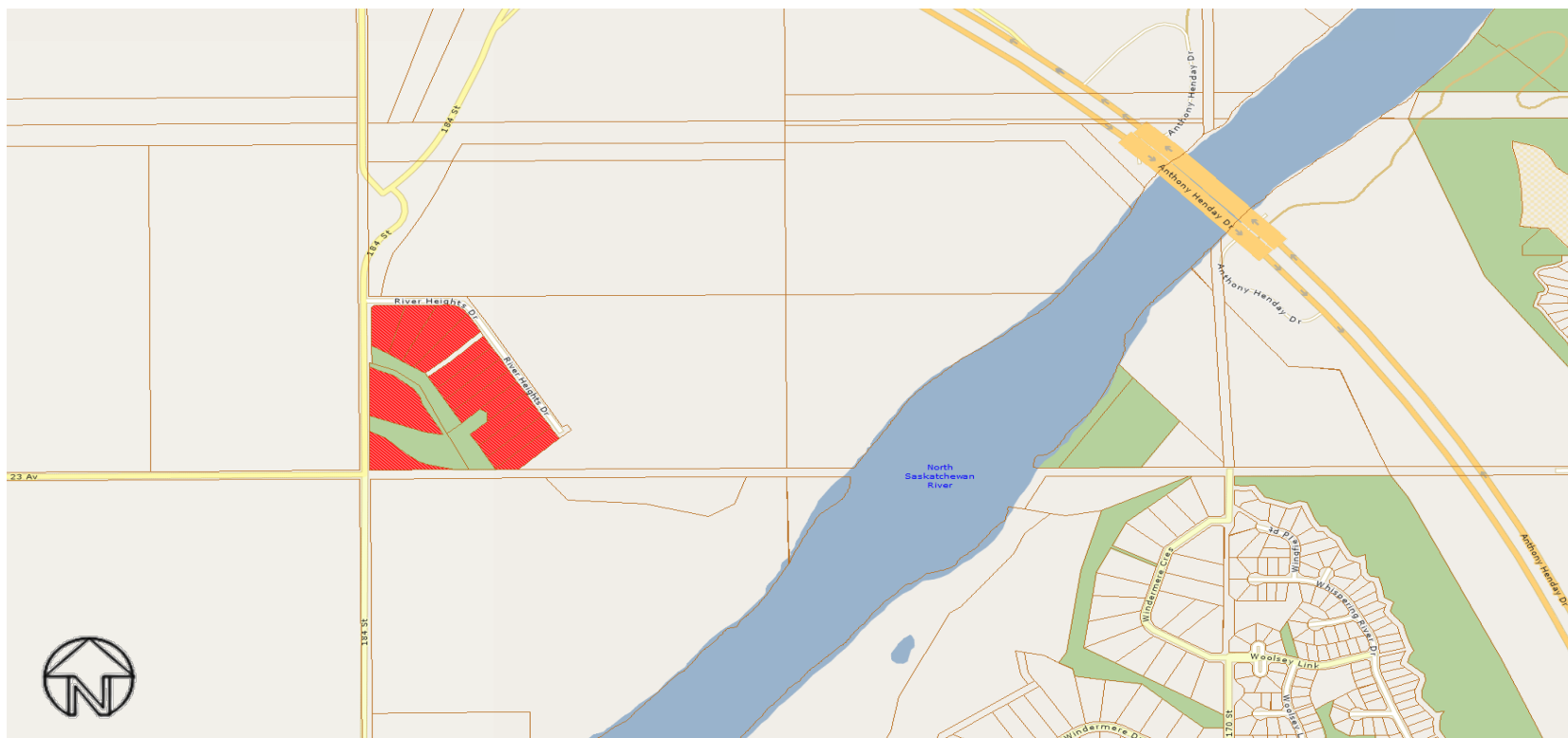


-  Rimrock Estates (3070)
-  Wernerville (3081)

The information provided by this map is for reference purpose only. The City of Edmonton disclaims any liability for the use of this map. This map may not be published, broadcast, redrawn or redistributed in whole or in part without the express written permission of the City of Edmonton, Financial and Corporate Services Department. All rights reserved. Copyright © 2021 The City of Edmonton



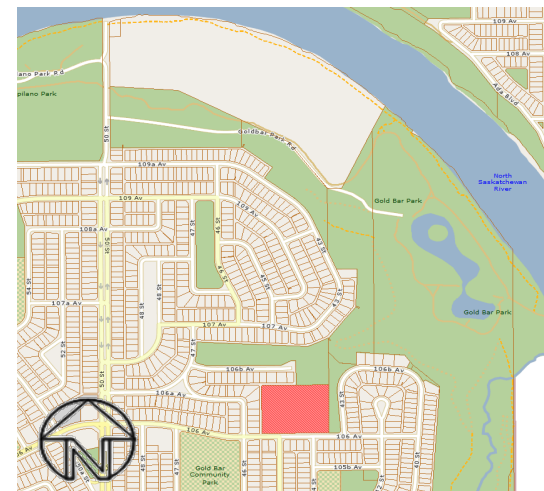
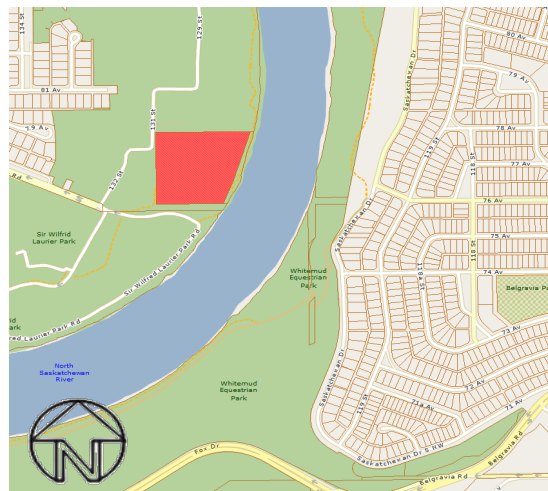
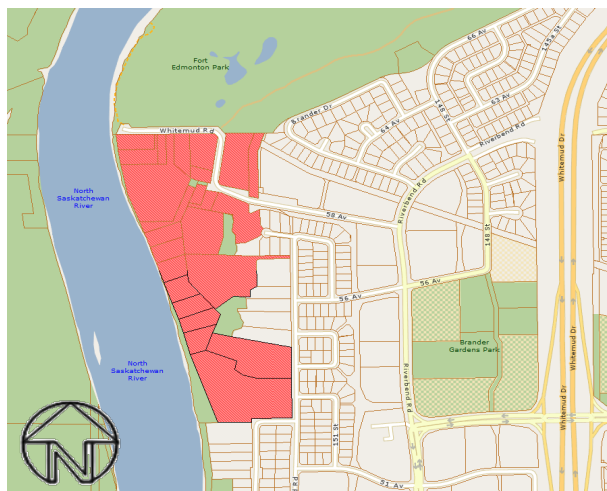
# Rural Residential Study Area – River;s Edge Neighbourhood



 Riverside Heights (3071)

The information provided by this map is for reference purpose only. The City of Edmonton disclaims any liability for the use of this map. This map may not be published, broadcast, redrawn or redistributed in whole or in part without the express written permission of the City of Edmonton, Financial and Corporate Services Department. All rights reserved. Copyright © 2021 The City of Edmonton

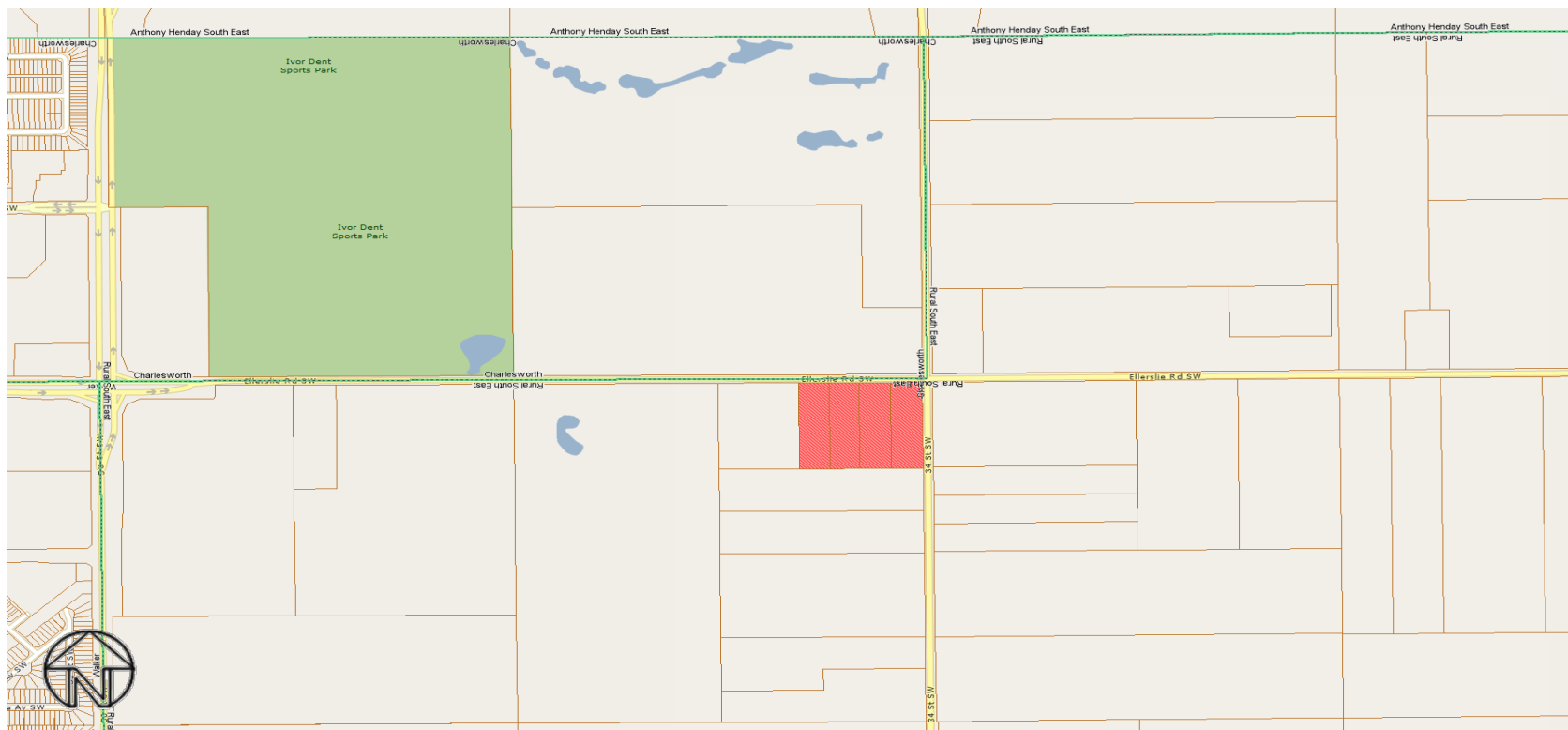
# Rural Residential Study Area – Various Neighbourhood




 River Valley Isolated (3074)

The information provided by this map is for reference purpose only. The City of Edmonton disclaims any liability for the use of this map. This map may not be published, broadcast, redrawn or redistributed in whole or in part without the express written permission of the City of Edmonton, Financial and Corporate Services Department. All rights reserved. Copyright © 2021 The City of Edmonton

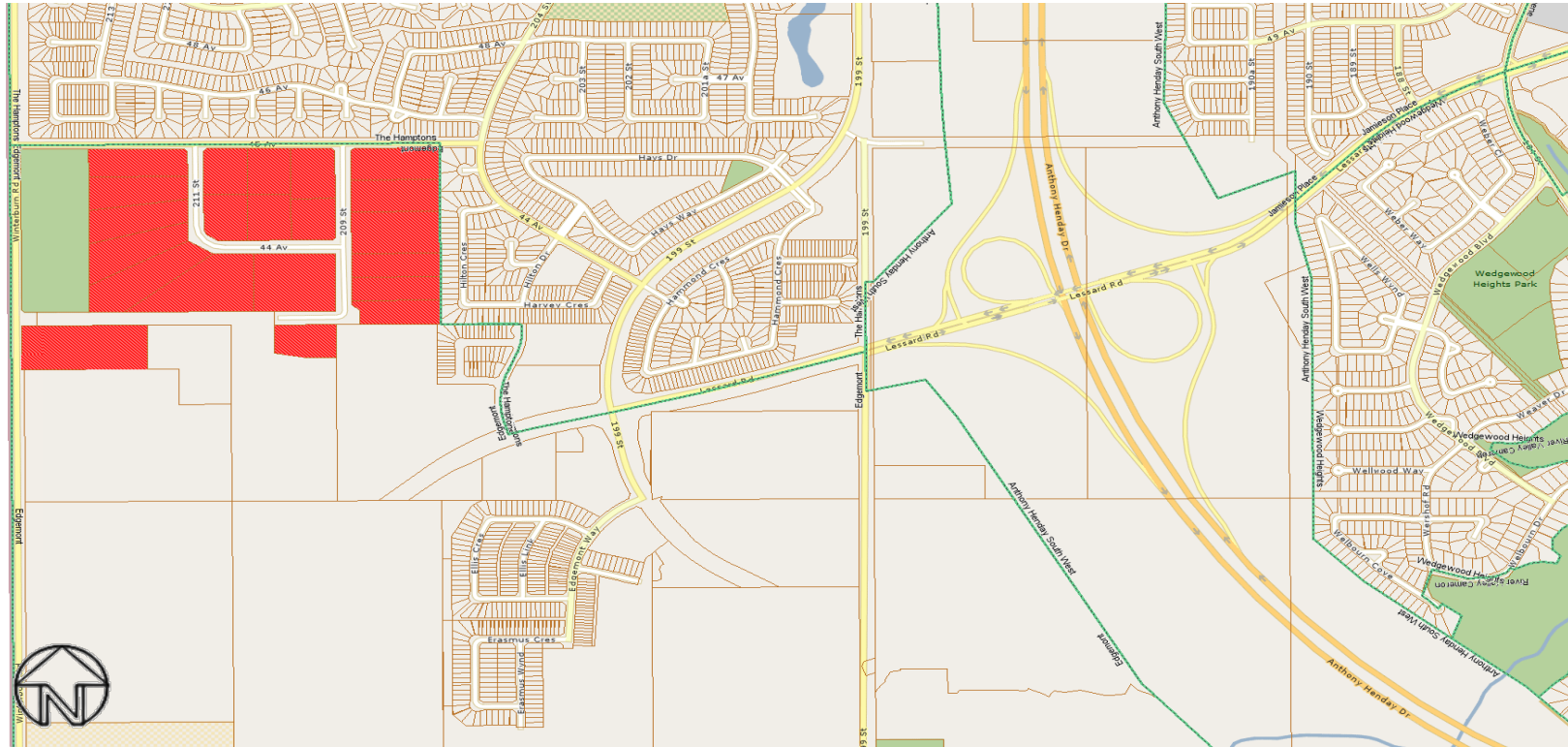
# Rural Residential Study Area – Decoteau Neighbourhood



 Ellerslie Road / 34 Street (3075)

The information provided by this map is for reference purpose only. The City of Edmonton disclaims any liability for the use of this map. This map may not be published, broadcast, redrawn or redistributed in whole or in part without the express written permission of the City of Edmonton, Financial and Corporate Services Department. All rights reserved. Copyright © 2021 The City of Edmonton

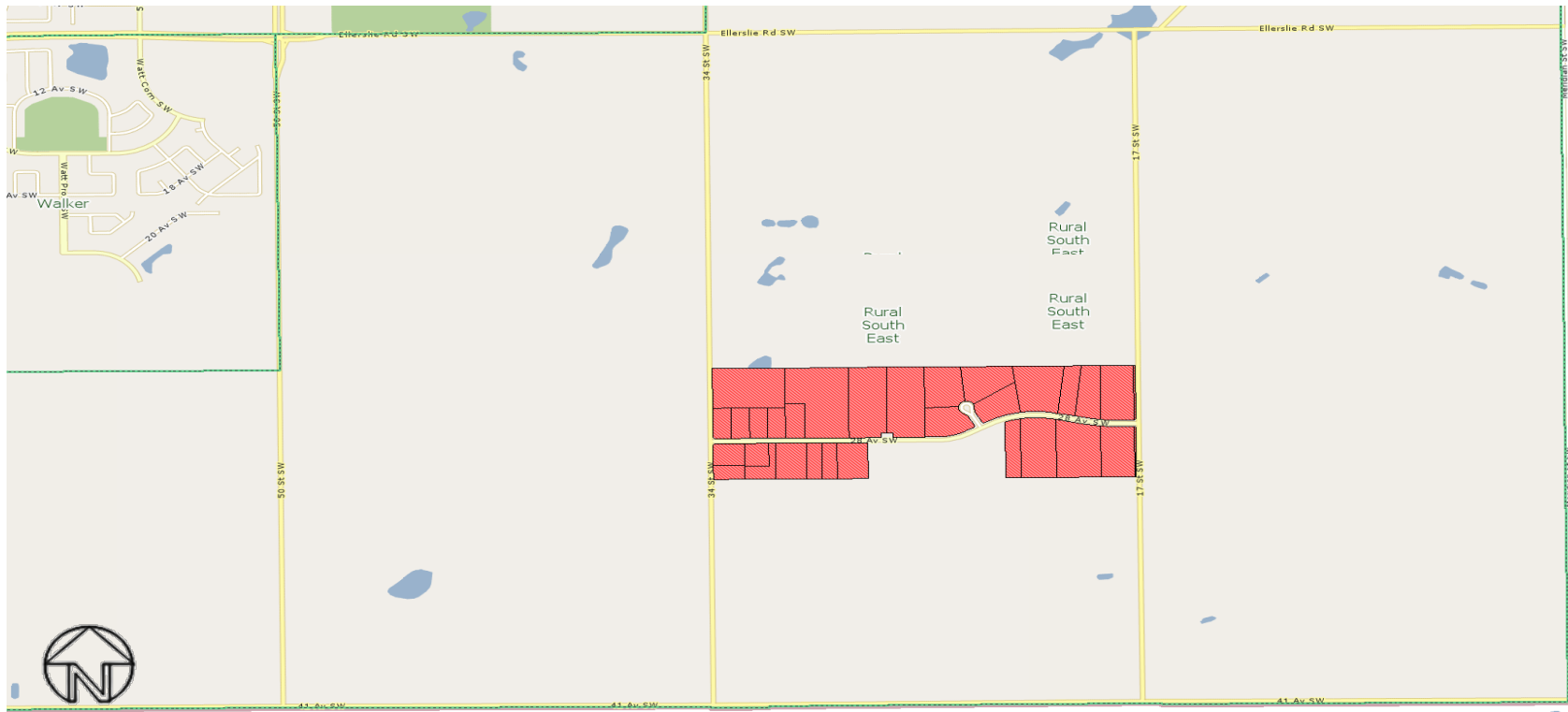
# Rural Residential Study Area – Edgemont Neighbourhood




 Triple A Acres (3078)

The information provided by this map is for reference purpose only. The City of Edmonton disclaims any liability for the use of this map. This map may not be published, broadcast, redrawn or redistributed in whole or in part without the express written permission of the City of Edmonton, Financial and Corporate Services Department. All rights reserved. Copyright © 2021 The City of Edmonton

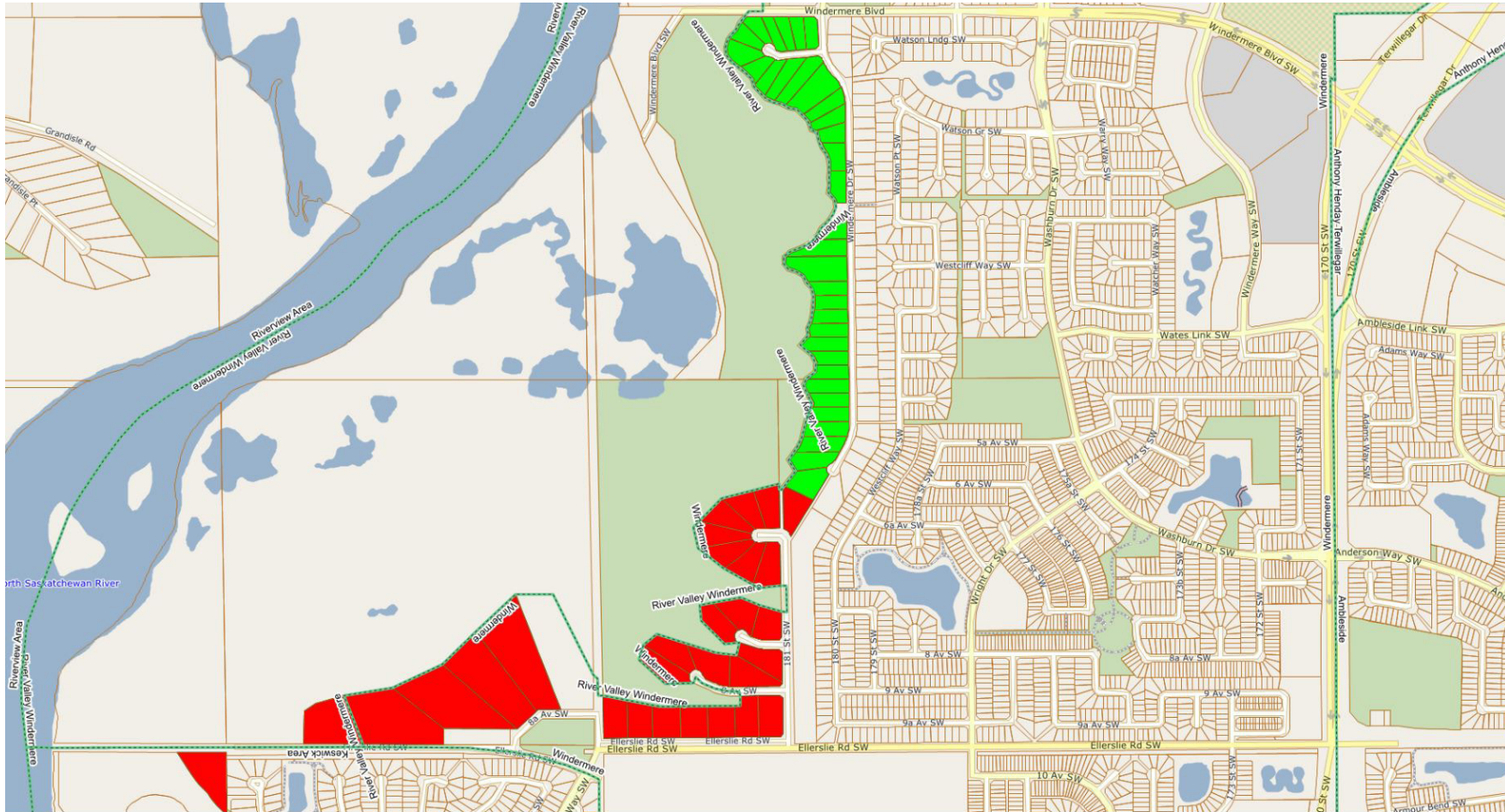
## Rural Residential Study Area – Decoteau Neighbourhood





 Ward Heights / Reppert Heights (3079)



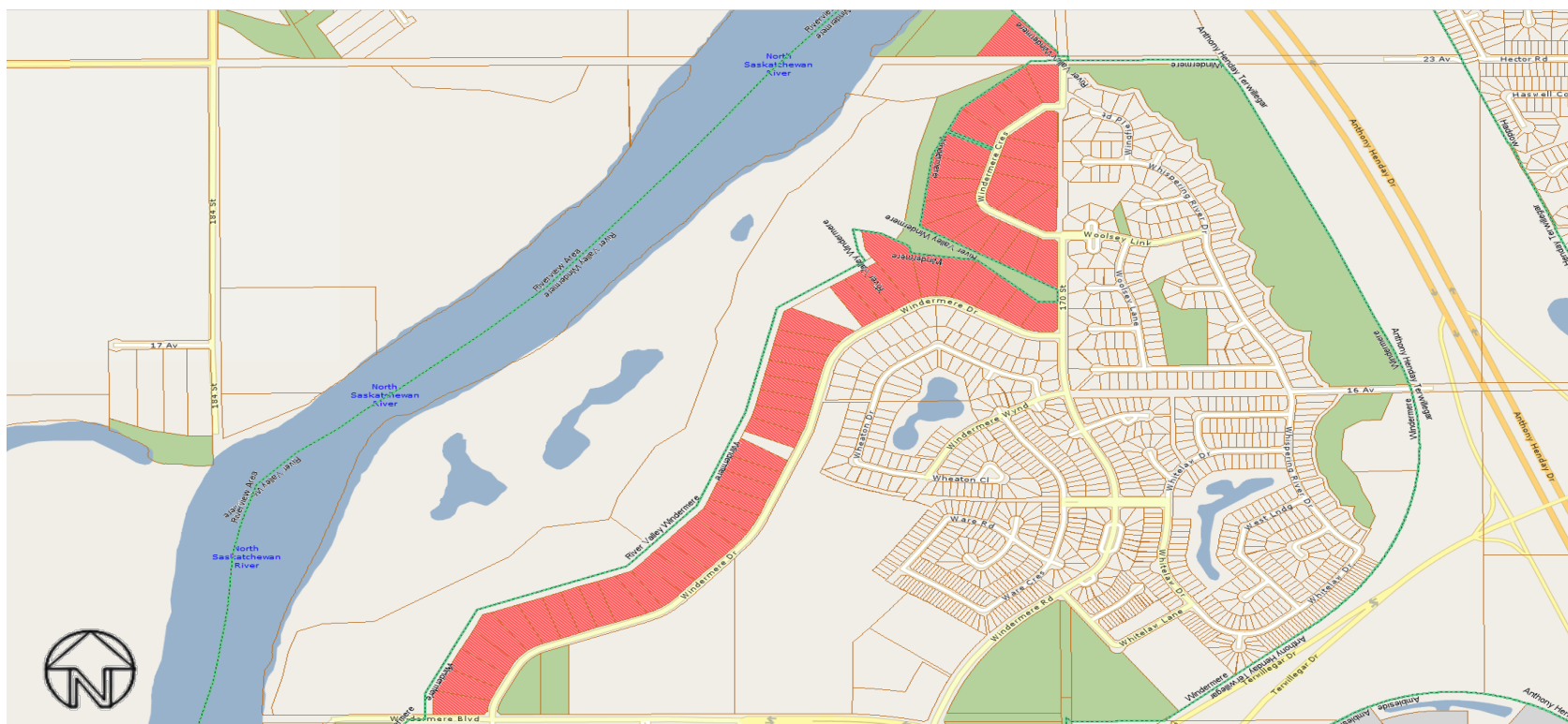
# Rural Residential Study Area – Windermere/River Valley Windermere/Keswick Area Neighbourhoods




-  West Point Estates (3082)
-  Windermere Ridge (3084)

The information provided by this map is for reference purpose only. The City of Edmonton disclaims any liability for the use of this map. This map may not be published, broadcast, redrawn or redistributed in whole or in part without the express written permission of the City of Edmonton, Financial and Corporate Services Department. All rights reserved. Copyright © 2021 The City of Edmonton

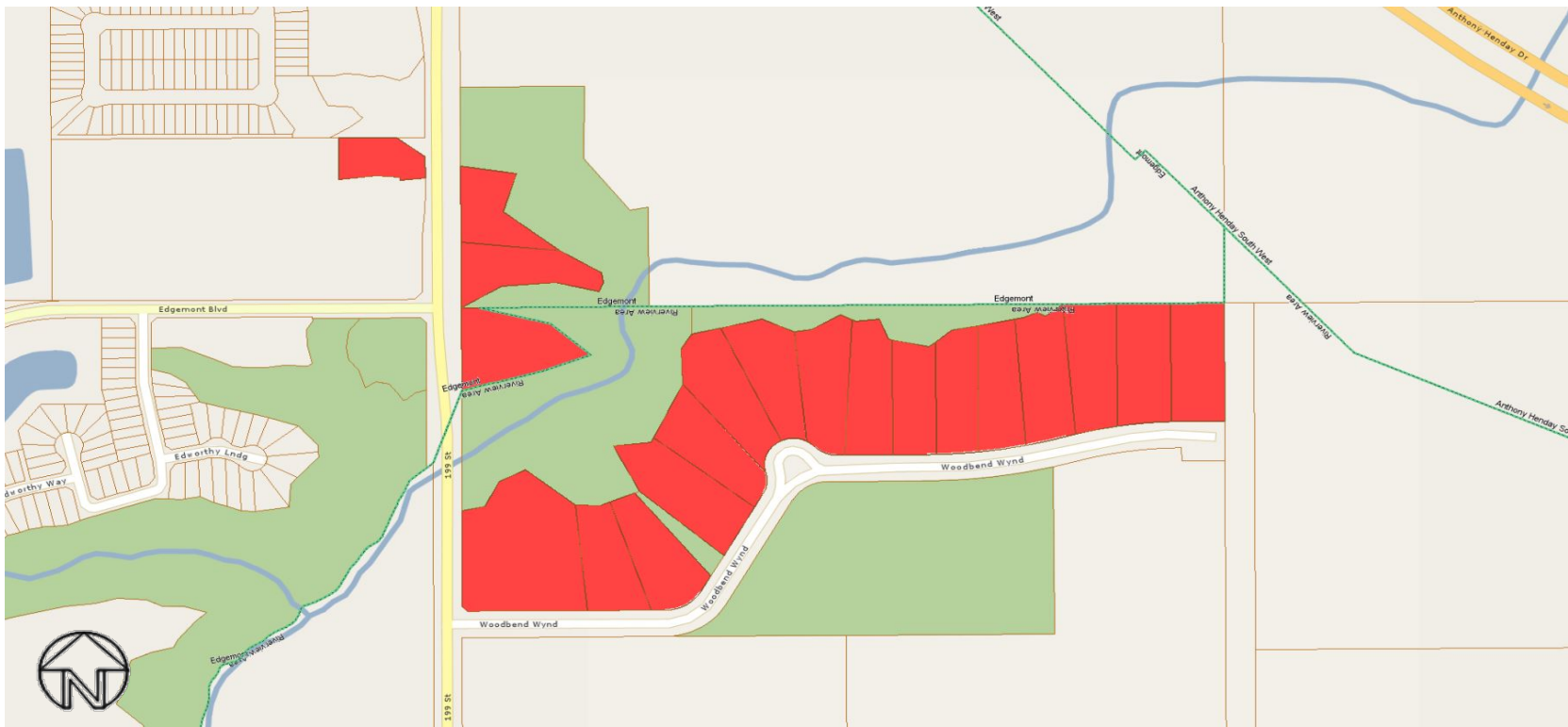
## Rural Residential Study Area – Windermere/River Valley Windermere Neighbourhood




 Windermere Estates (3083)

The information provided by this map is for reference purpose only. The City of Edmonton disclaims any liability for the use of this map. This map may not be published, broadcast, redrawn or redistributed in whole or in part without the express written permission of the City of Edmonton, Financial and Corporate Services Department. All rights reserved. Copyright © 2021 The City of Edmonton

## Rural Residential Study Area – Edgemont/The Uplands Neighbourhoods

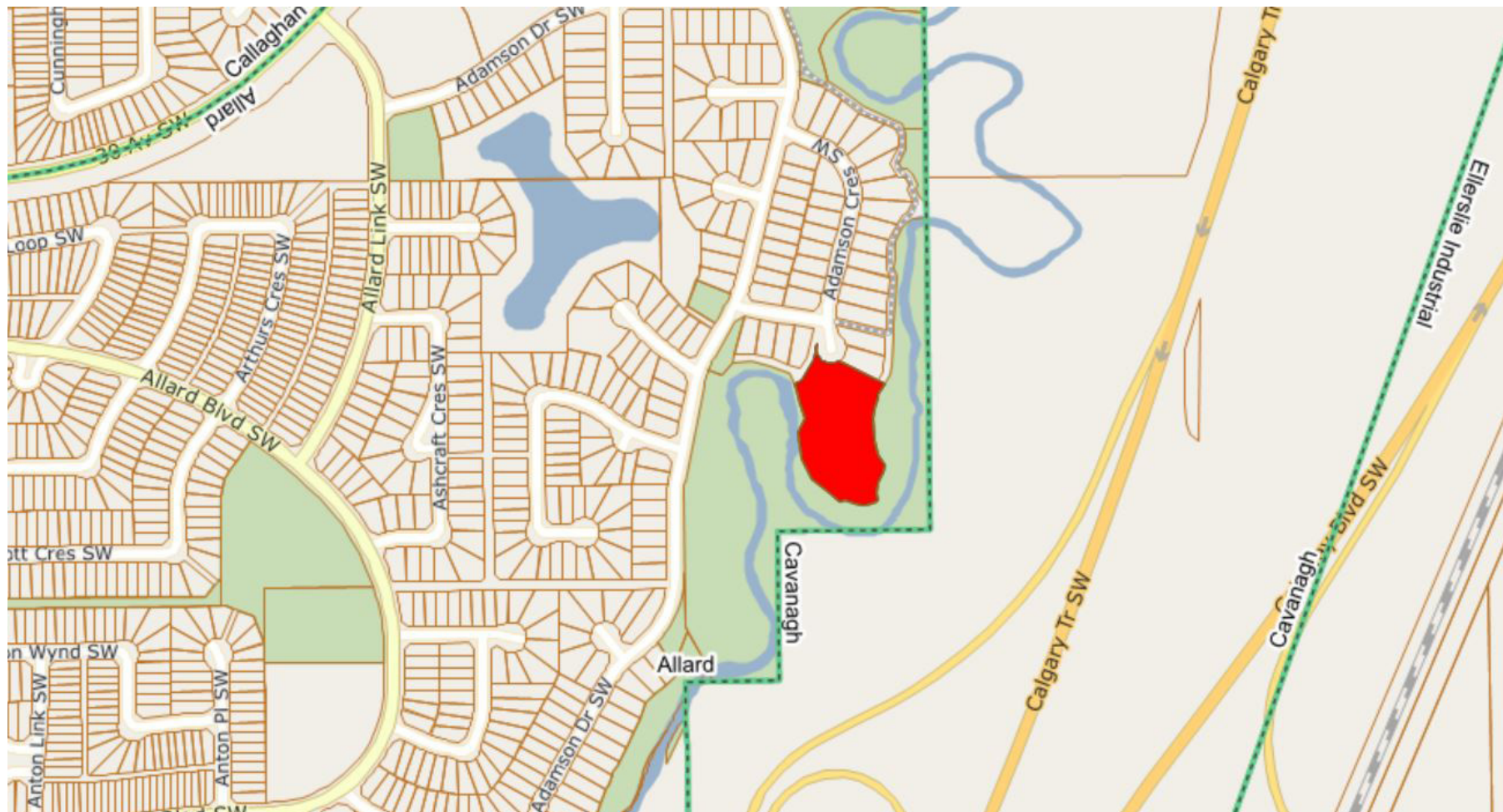


 Woodbend Estates (3085)

The information provided by this map is for reference purpose only. The City of Edmonton disclaims any liability for the use of this map. This map may not be published, broadcast, redrawn or redistributed in whole or in part without the express written permission of the City of Edmonton, Financial and Corporate Services Department. All rights reserved. Copyright © 2021 The City of Edmonton



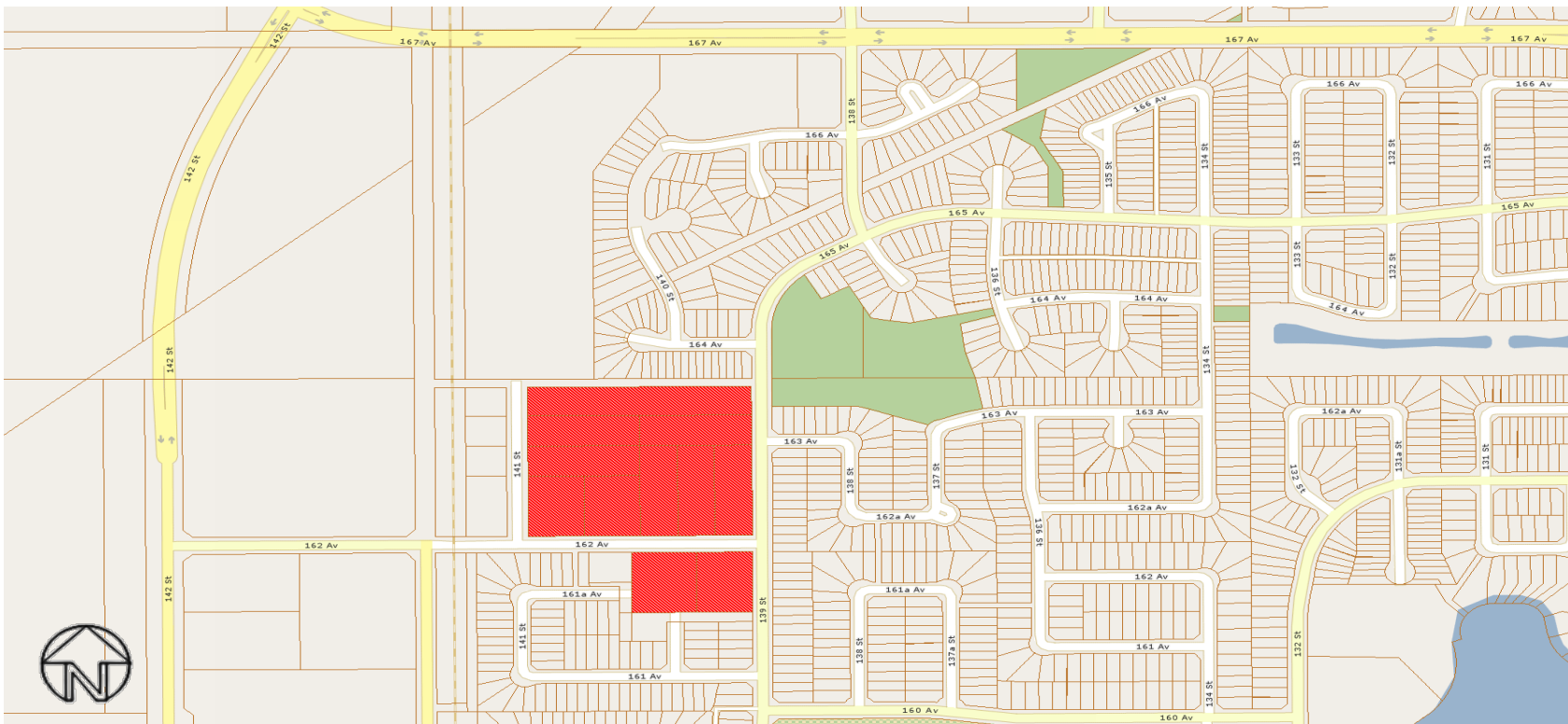
## Rural Residential Study Area – Allard Neighbourhood



 Allard (3088)

The information provided by this map is for reference purpose only. The City of Edmonton disclaims any liability for the use of this map. This map may not be published, broadcast, redrawn or redistributed in whole or in part without the express written permission of the City of Edmonton, Financial and Corporate Services Department. All rights reserved. Copyright © 2021 The City of Edmonton

# Rural Residential Study Area – Carlton Neighbourhood

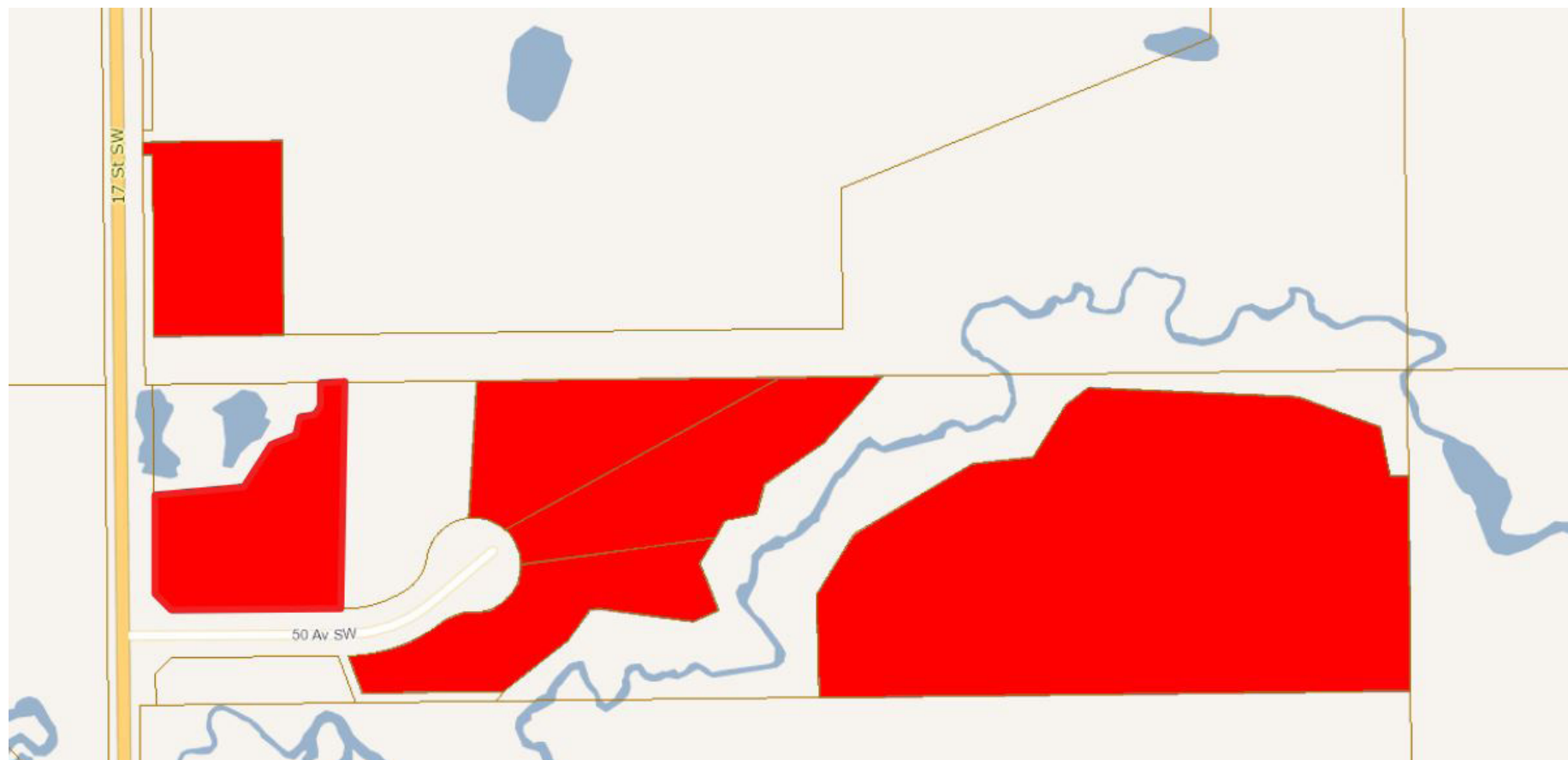


 Carlton (3089)

The information provided by this map is for reference purpose only. The City of Edmonton disclaims any liability for the use of this map. This map may not be published, broadcast, redrawn or redistributed in whole or in part without the express written permission of the City of Edmonton, Financial and Corporate Services Department. All rights reserved. Copyright © 2021 The City of Edmonton

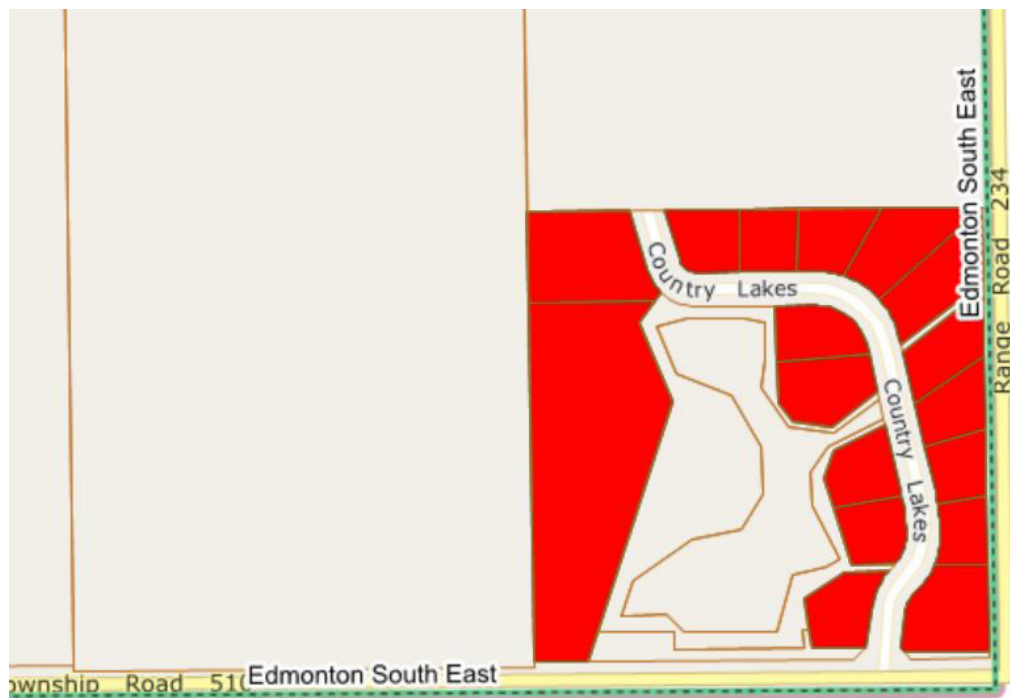


## Rural Residential Study Area – Creek View Estates (3248)



 Creek View Estates (3248)

## Rural Residential Study Area – Country Lakes



 Country Lakes (3249)