

April 2022

170 Street Pedestrian Bridge: Pathway Closure

The City of Edmonton is building a new pedestrian bridge at 170 Street between 87 Avenue and 90 Avenue. Construction is currently underway and is anticipated to be complete by fall 2022.

Please note that the temporary pathway (88 Avenue NW to 87 Avenue NW) will be closed from the end of April to the end of September 2022 to allow for construction to begin on a new retaining wall. Pedestrian traffic will be detoured to a new temporary walkway along 165 Street (map below). Detour maps will be posted along the route for reference.

Scope of Work

- The project will construct a new pedestrian bridge over 170 Street, including access ramps, a shared-use path and a retaining wall.
- The existing pathway between 87 Avenue NW and 88 Avenue NW will be closed prior to construction of the retaining wall for pedestrian safety. The pathway is anticipated to reopen October 2022.
- Following the City of Edmonton Noise Bylaw (#14600), construction is scheduled from 7 a.m to 9 p.m, Monday through Saturday until the work is complete.

Access

For this closure pedestrians can detour along 165 Street. The detour route has been detailed below. Detour signage maps will be posted along the route for clarity. Access to businesses and residential areas will be maintained to the extent possible.

If you have special access requirements, such as DATS, please advise the contact person(s) listed below, as soon as possible.

For further information, please contact:

City of Edmonton

Malika Ali
Engineering Program Manager,
Transportation Infrastructure Delivery
Phone: 780-690-6055

EllisDon Construction Services Inc.

Brandon Martin
General Site Superintendent
Phone: 780-932-9906

BULLETIN

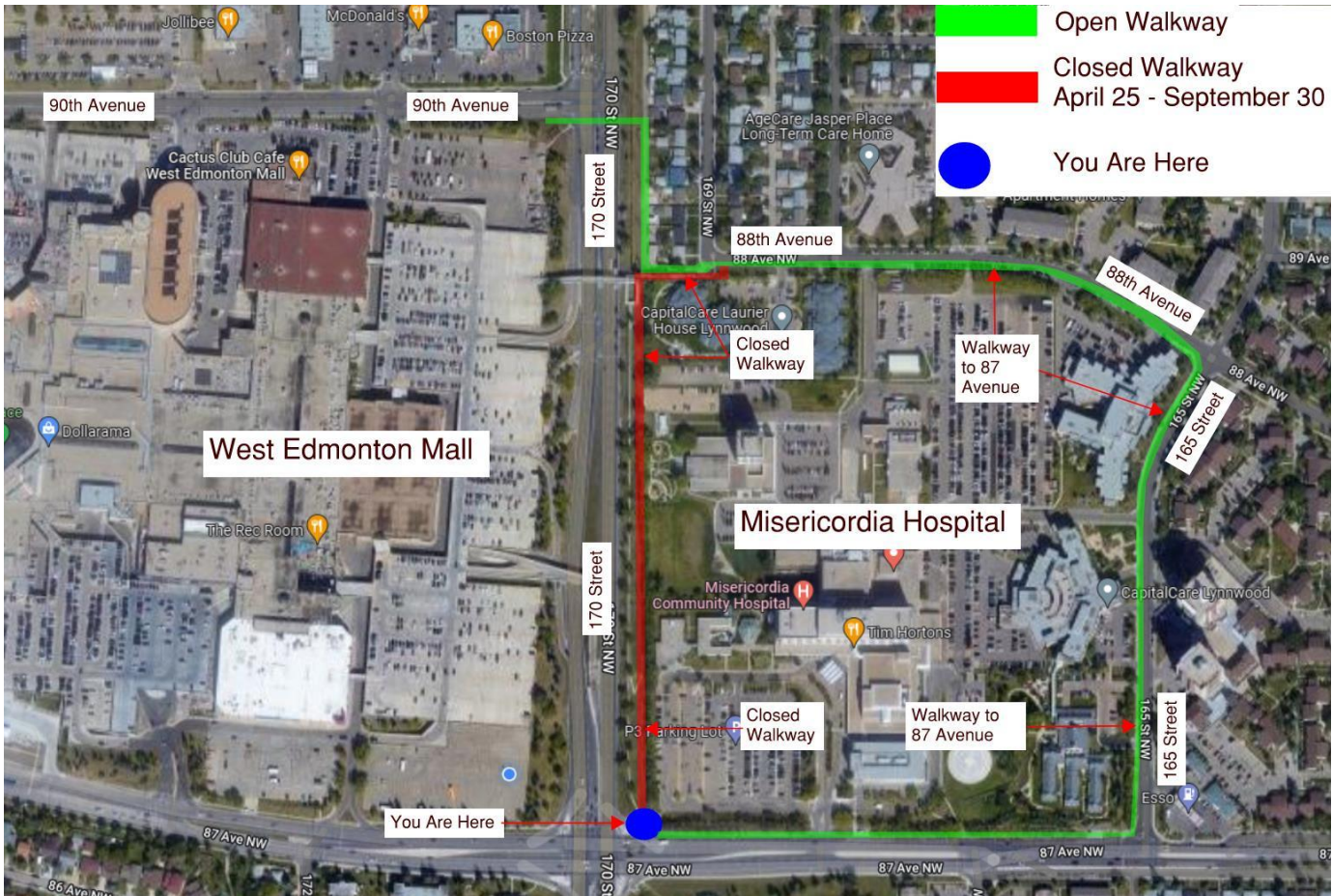


Figure 1 - These detour route signs will be posted at all turn locations for ease of use.