

May 2023

INTEGRATED INFRASTRUCTURE SERVICES  
TRANSPORTATION INFRASTRUCTURE DELIVERY  
CITY OF EDMONTON



# CONSTRUCTION NOTICE

## 170 Street Pedestrian Bridge: Truss Installation

As part of the 170 Street Pedestrian Bridge project, construction of the truss structure will start mid-May. To ensure the safety of Edmontonians and our construction crew, vehicular and pedestrian access will be fully closed in the area during construction.

### Construction Impacts

Weather permitting, construction on the truss structure is scheduled to begin on the evening of Friday, May 12. The closure will be in place until Monday, May 15. A temporary full closure of both the northbound and southbound lanes on 170 Street, between 87 Avenue and 90 Avenue, is necessary.

Following this work, directional closures will be implemented for crane access once the truss has been installed. We are working to minimize the impacts of all temporary road closures. Simultaneous northbound and southbound closures will only be performed over weekends to limit potential traffic disruption. The truss is expected to be fully in place by the end of summer 2023.

During construction, access to the West Edmonton Mall parking lot ramps along 170 Street will be closed, along with the temporary pedestrian walkway from May until the summer.

### Access

Pedestrians are asked to continue to detour along 165 Street. Vehicular traffic is to detour around West Edmonton Mall to 178 Street. For further directions, please see the map attached to the back of this bulletin or visit [edmonton.ca/170StreetPedBridge](https://edmonton.ca/170StreetPedBridge)

### For further information, contact:

#### City of Edmonton

Malika Ali  
Engineering Program Manager,  
Transportation Infrastructure Delivery  
Phone: 780-690-6055

#### EllisDon Construction Services Inc.

Steve Coughlin  
General Site Superintendent  
Phone: 403-472-6371

May 2023

INTEGRATED INFRASTRUCTURE SERVICES  
TRANSPORTATION INFRASTRUCTURE DELIVERY  
CITY OF EDMONTON

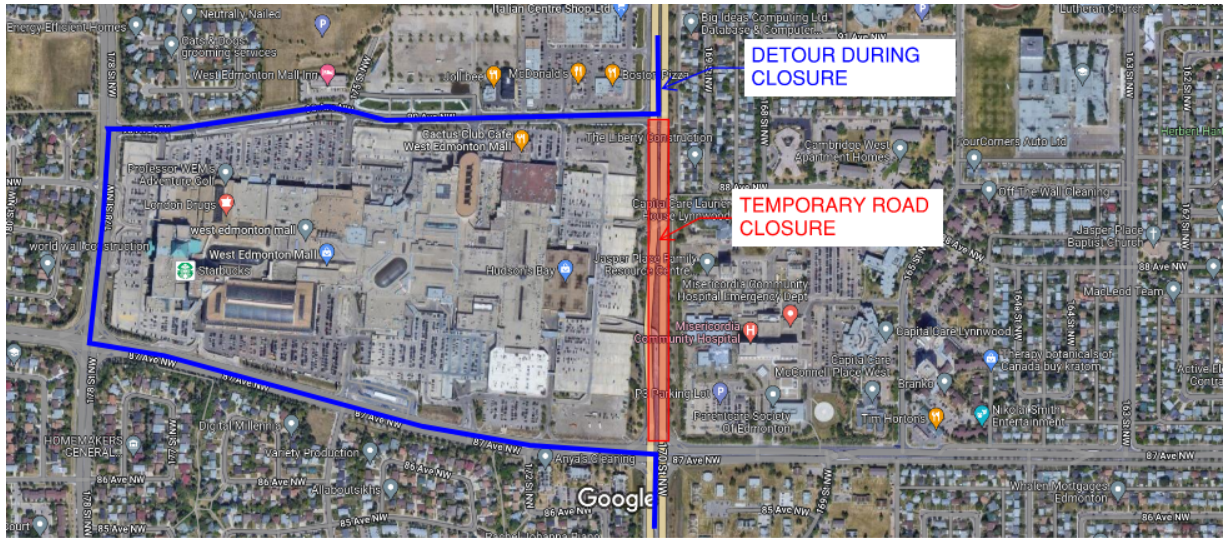


Figure 1 – 170th Street temporary road closures - Red indicates the temporary closure area and blue indicates the detour.



Figure 2 - Pedestrian detour route map (signage will be posted at all turn locations for ease of use).