

**SITE PLAN**  
1:200

Sharbro Construction Ltd.

**99TH ST. RESIDENTIAL DEVELOPMENT**  
99TH ST. & 90TH AVE, EDMONTON, ALBERTA

**HODGSON SCHILF EVANS ARCHITECTS INC.**  
12328 104 Avenue, Edmonton, Alberta T5N 0V3  
TEL: 780-482-1157 FAX: 780-482-1176  
hsea.ca

10/23/18  
18041



**WEST ELEVATION**

1:200

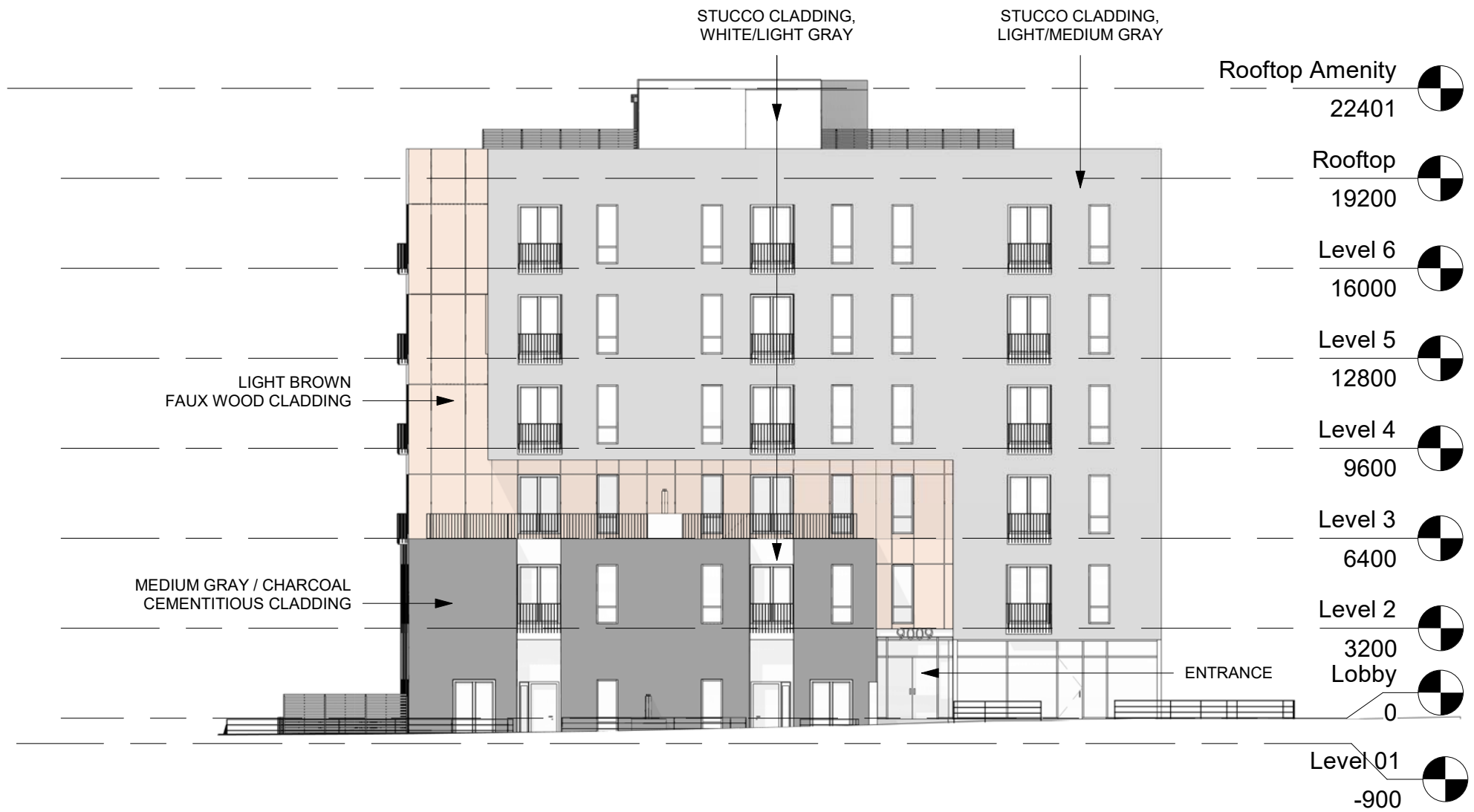
**Sharbro Construction Ltd.**

**99TH ST. RESIDENTIAL DEVELOPMENT**

99TH ST. & 90TH AVE, EDMONTON, ALBERTA

**HODGSON  
SCHILF  
EVANS  
ARCHITECTS INC.**  
12328 104 Avenue, Edmonton, Alberta T5N 0V3  
TEL: 780.482.1157  
FAX: 780.482.1175  
[hsea.ca](http://hsea.ca)

10/05/2018  
18041



**SOUTH ELEVATION**

1:200

**Sharbro Construction Ltd.**

**99TH ST. RESIDENTIAL DEVELOPMENT**

99TH ST. & 90TH AVE, EDMONTON, ALBERTA

**HODGSON  
SCHILF  
EVANS  
ARCHITECTS INC.**  
12328 104 Avenue, Edmonton, Alberta T5N 0V3  
TEL: 780.482.1157  
FAX: 780.482.1175  
[hsea.ca](http://hsea.ca)

10/05/2018  
18041



**EAST ELEVATION**

1:200

Sharbro Construction Ltd.

**99TH ST. RESIDENTIAL DEVELOPMENT**

99TH ST. & 90TH AVE, EDMONTON, ALBERTA

**HODGSON  
SCHILF  
EVANS  
ARCHITECTS INC.**  
12328 104 Avenue, Edmonton, Alberta T5N 0V3  
TEL: 780.482.1157  
FAX: 780.482.1175  
[hsea.ca](http://hsea.ca)

10/05/2018  
18041



**NORTH ELEVATION**  
1:200