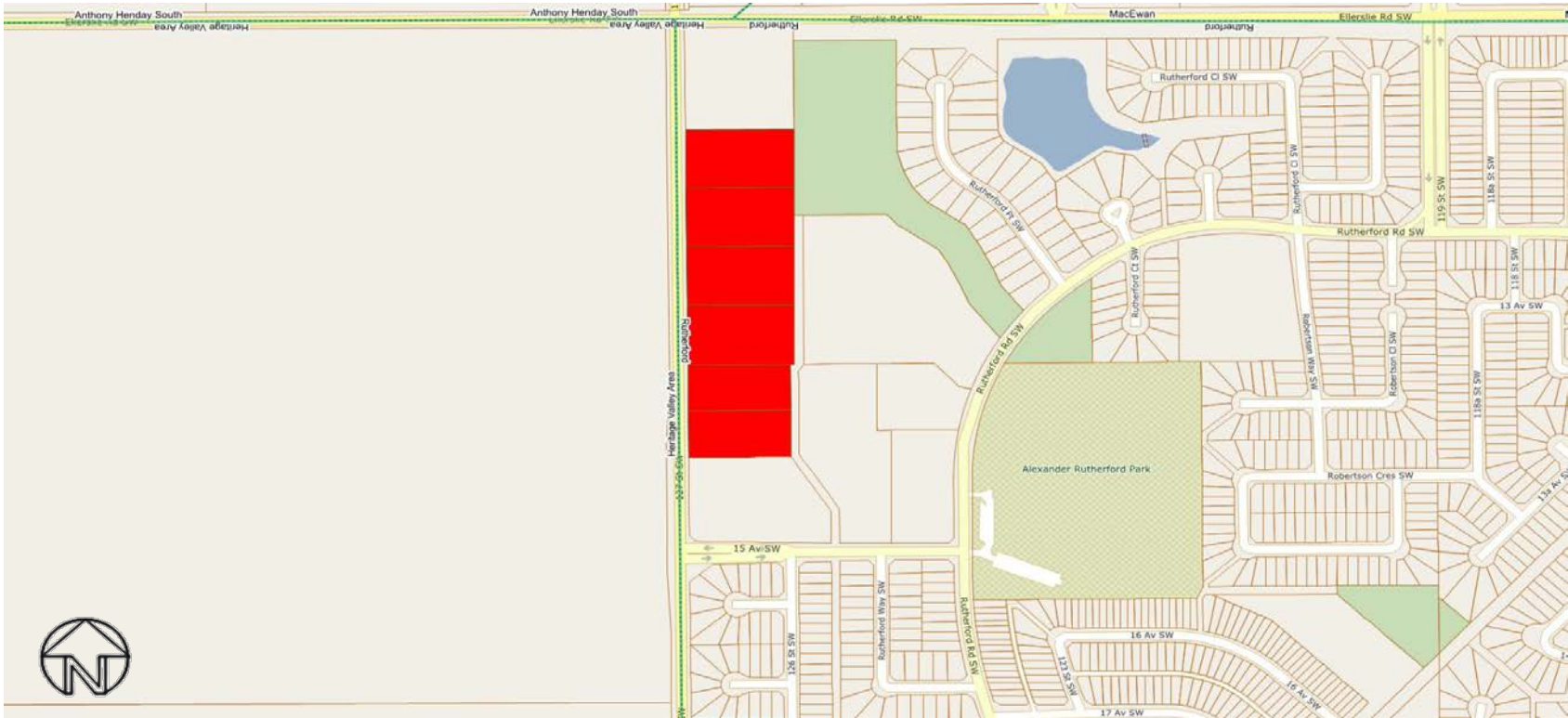


City of Edmonton
Rural Residential Study Areas
2018 Assessment



Table of Contents

Study Area No.	Rural Residential Study Area (Neighbourhood)	Page No.
3050	127th Street (Rutherford)	1
3051	Big Island Heights (River's Edge)	2
3052	Big Lake Estates (Kinglet Gardens)	3
3053	Cedar Ridge (Riverview Area)	4
3054	Donsdale (Donsdale)	5
3055	Fort Road (Rural North East Horse Hill)	6
3056	Guthrie Estates (Riverview Area)	7
3057	Hawthorne Hill (Riverview Area)	7
3058	Hillview Park (Rural North East Horse Hill)	8
3059	Horse Hills and Tipperary (Rural North East Horse Hill)	8
3060	Hurstwood Park (Maple Ridge Industrial, SE Industrial)	9
3061	Johnson's Road (Edmonton Energy and Technology Park)	10
3062	Lewis Farms (Lewis Farms Industrial)	11
3063	Mooncrest Park (Kinokamau Plains Area)	12
3064	Oliver Gardens (Rural North East South Sturgeon)	13
3065	Patricia Heights (Patricia Heights)	14
3066	Quarry Ridge Phase 1 (Rural North East South Sturgeon)	13
3067	Quarry Ridge Phase 2 (Rural North East South Sturgeon)	13
3068	Rendek Ranch (Riverview Area)	7
3069	Richford Estates (Richford, Blackmud Creek Ravine)	15
3070	Rimrock Estates (Ellerslie)	16
3071	Riverside Heights (River's Edge)	17
3072	Riverview Acres (Riverview Area)	7
3073	River Valley Country Estates (Riverview Area)	7
3074	River Valley Isolated (various neighbourhoods)	18
3075	Ellerslie Road / 34 Street (Decoteau)	19
3076	Sharonden Ravines (Riverview Area)	7
3077	South Sturgeon (Rural North East South Sturgeon)	6
3078	Triple A Acres (Edgemont)	20
3079	Ward Heights / Reppert Heights (Decoteau)	21
3080	Wedgewood (Wedgewood Heights)	5
3081	Wernerville (Ellerslie)	16
3082	West Point Estates (Windermere/River Valley Windermere/Keswick)	22
3083	Windermere Estates (Windermere/River Valley Windermere)	23
3084	Windermere Ridge (Windermere)	22
3085	Woodbend Estates (Edgemont / The Uplands)	24
3086	Quarry Ridge Phase 3 (Rural North East South Sturgeon)	13
3088	Allard (Allard)	25
3089	Carlton (Carlton)	26



Rural Residential Study Area - Rutherford Neighbourhood

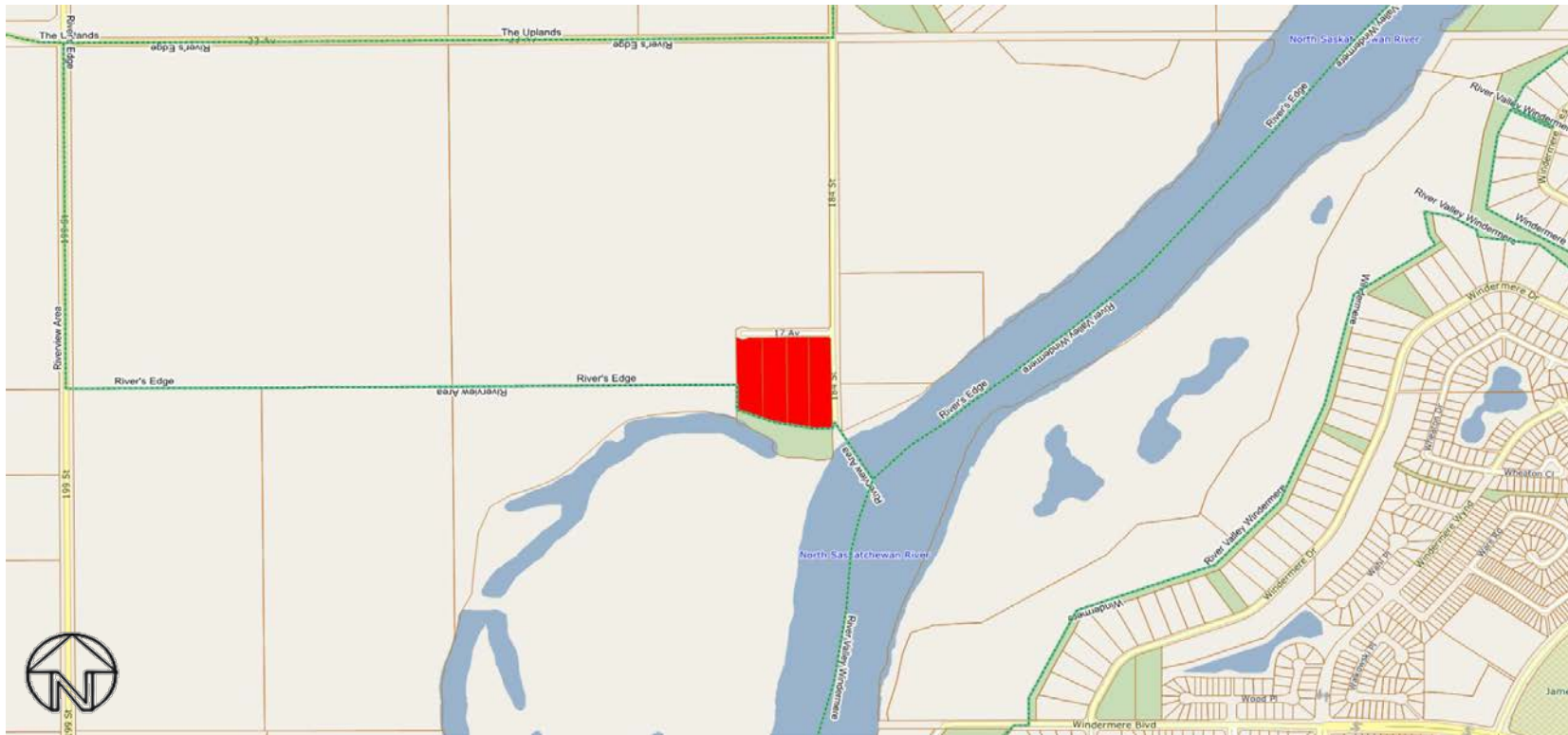


127th Street (3050)

All rights reserved.

The information provided by this map is for reference purpose only. The City of Edmonton disclaims any liability for the use of this map. This map may not be published, broadcast, redrawn or redistributed in whole or in part without the express written permission of the City of Edmonton, Financial and Corporate Services Department.

Copyright © 2018 The City of Edmonton



Rural Residential Study Area - River's Edge Neighbourhood

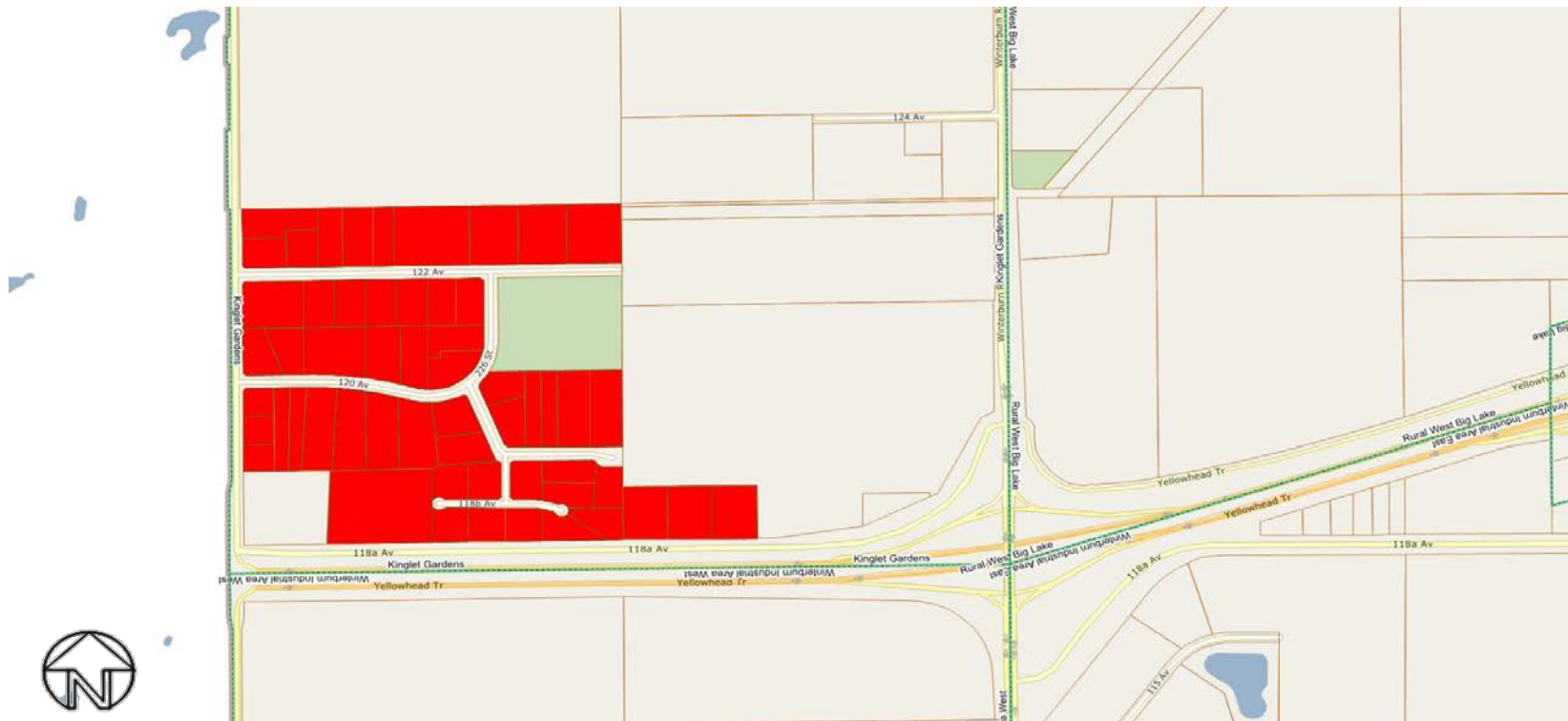


Big Island Heights (3051)

All rights reserved.

The information provided by this map is for reference purpose only. The City of Edmonton disclaims any liability for the use of this map. This map may not be published, broadcast, redrawn or redistributed in whole or in part without the express written permission of the City of Edmonton, Financial and Corporate Services Department.

Copyright © 2018 The City of Edmonton



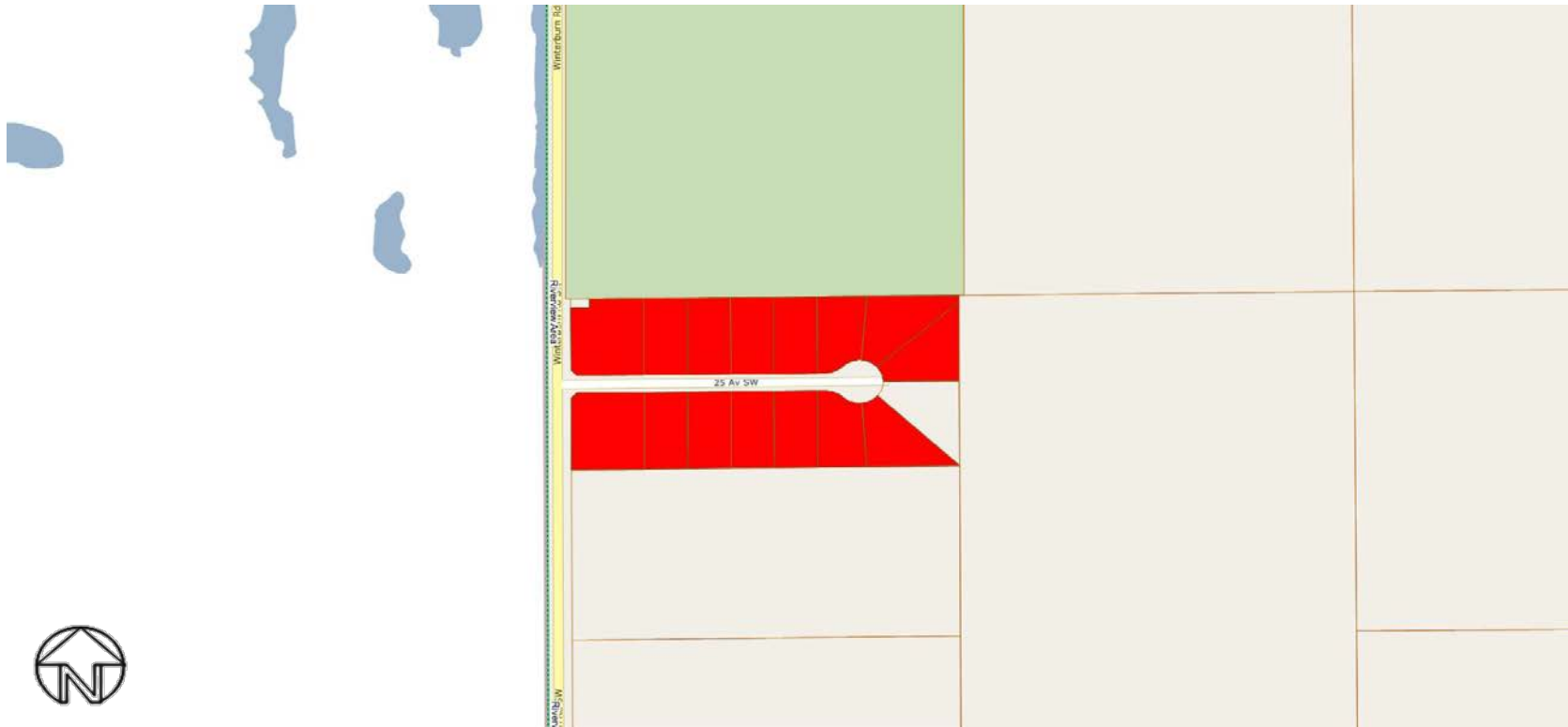
Rural Residential Study Area - Kinglet Gardens Neighbourhood

 Big Lake Estates (3052)


All rights reserved.

The information provided by this map is for reference purpose only. The City of Edmonton disclaims any liability for the use of this map. This map may not be published, broadcast, redrawn or redistributed in whole or in part without the express written permission of the City of Edmonton, Financial and Corporate Services Department.

Copyright © 2018 The City of Edmonton



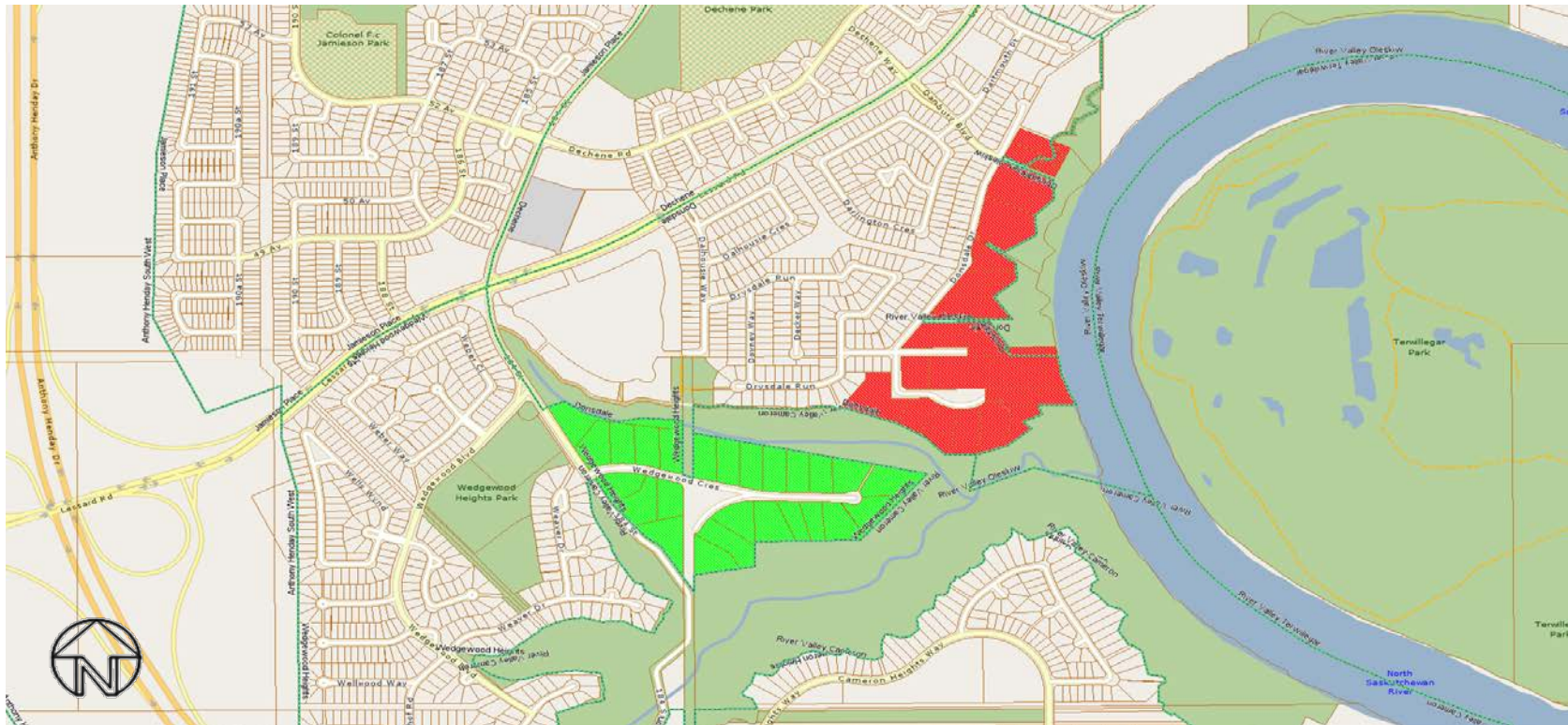
Rural Residential Study Area - Riverview Area Neighbourhood

 Cedar Ridge (3053)

All rights reserved.

The information provided by this map is for reference purpose only. The City of Edmonton disclaims any liability for the use of this map. This map may not be published, broadcast, redrawn or redistributed in whole or in part without the express written permission of the City of Edmonton, Financial and Corporate Services Department.

Copyright © 2018 The City of Edmonton



Rural Residential Study Area - Donsdale and Wedgewood Heights Neighbourhoods

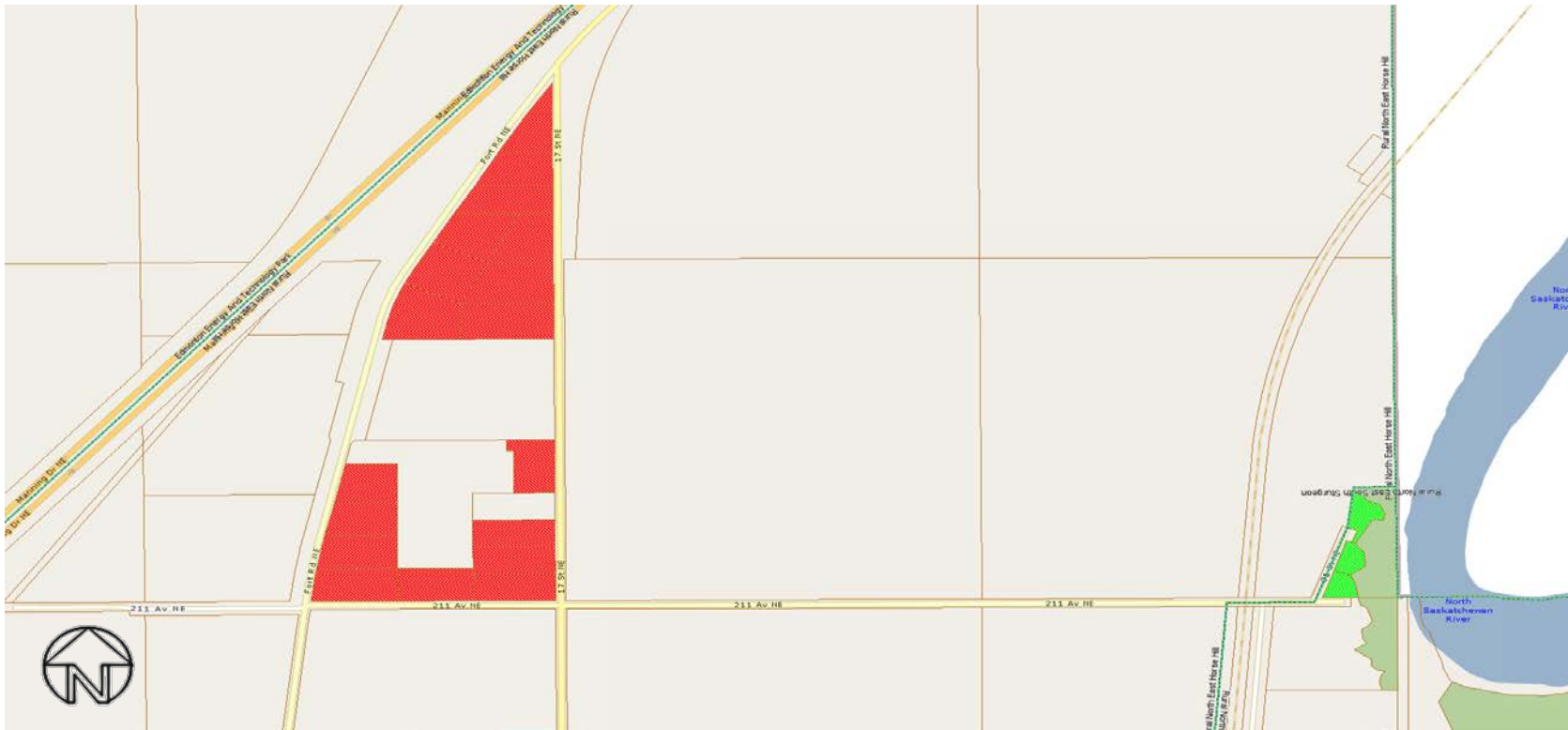
Donsdale (3054)

Wedgewood (3080)


All rights reserved.


The information provided by this map is for reference purpose only. The City of Edmonton disclaims any liability for the use of this map. This map may not be published, broadcast, redrawn or redistributed in whole or in part without the express written permission of the City of Edmonton, Financial and Corporate Services Department.

Copyright © 2018 The City of Edmonton



Rural Residential Study Area - Rural North East Horse Hill/Rural North East South Sturgeon Neighbourhoods

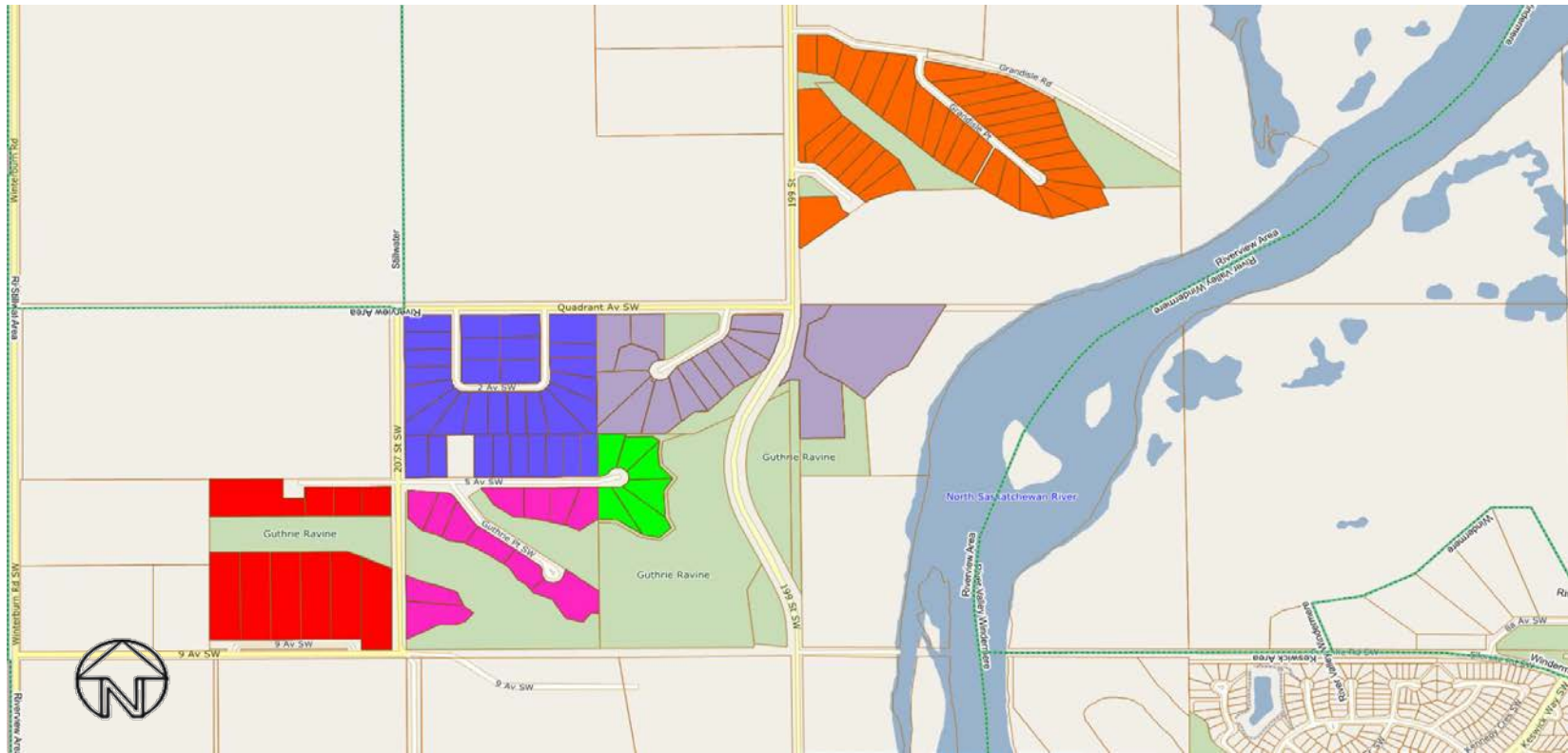
 Fort Road (3055)

 South Sturgeon (3077)





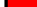

All rights reserved.

The information provided by this map is for reference purpose only. The City of Edmonton disclaims any liability for the use of this map. This map may not be published, broadcast, redrawn or redistributed in whole or in part without the express written permission of the City of Edmonton, Financial and Corporate Services Department.

Copyright © 2018 The City of Edmonton

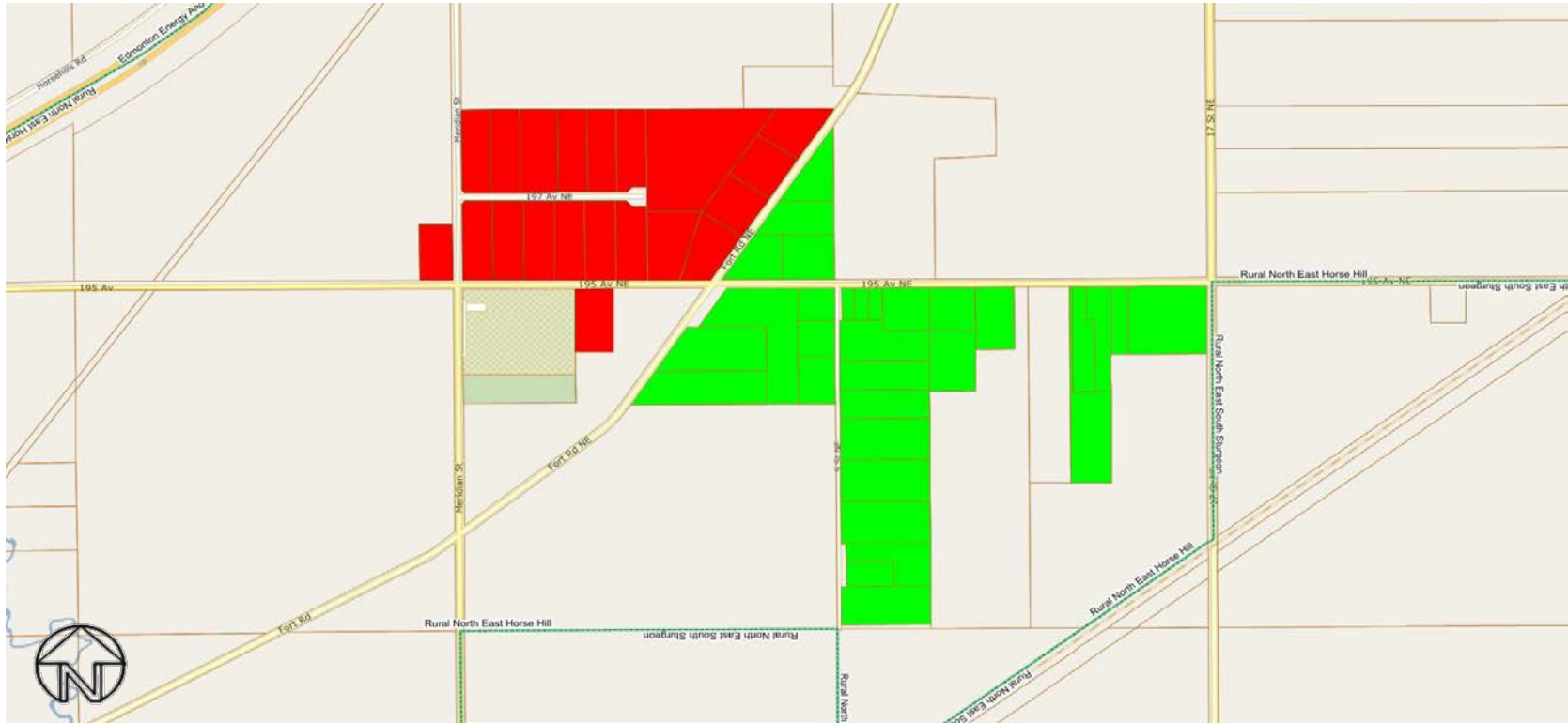


Rural Residential Study Area - Riverview Area Neighbourhood

- | | | | |
|---|------------------------|---|-------------------------------------|
|  | Guthrie Estates (3056) |  | Riverview Acres (3072) |
|  | Hawthorne Hill (3057) |  | River Valley Country Estates (3073) |
|  | Rendek Ranch (3068) |  | Sharonden Ravines (3076) |

All rights reserved.

The information provided by this map is for reference purpose only. The City of Edmonton disclaims any liability for the use of this map. This map may not be published, broadcast, redrawn or redistributed in whole or in part without the express written permission of the City of Edmonton, Financial and Corporate Services Department.



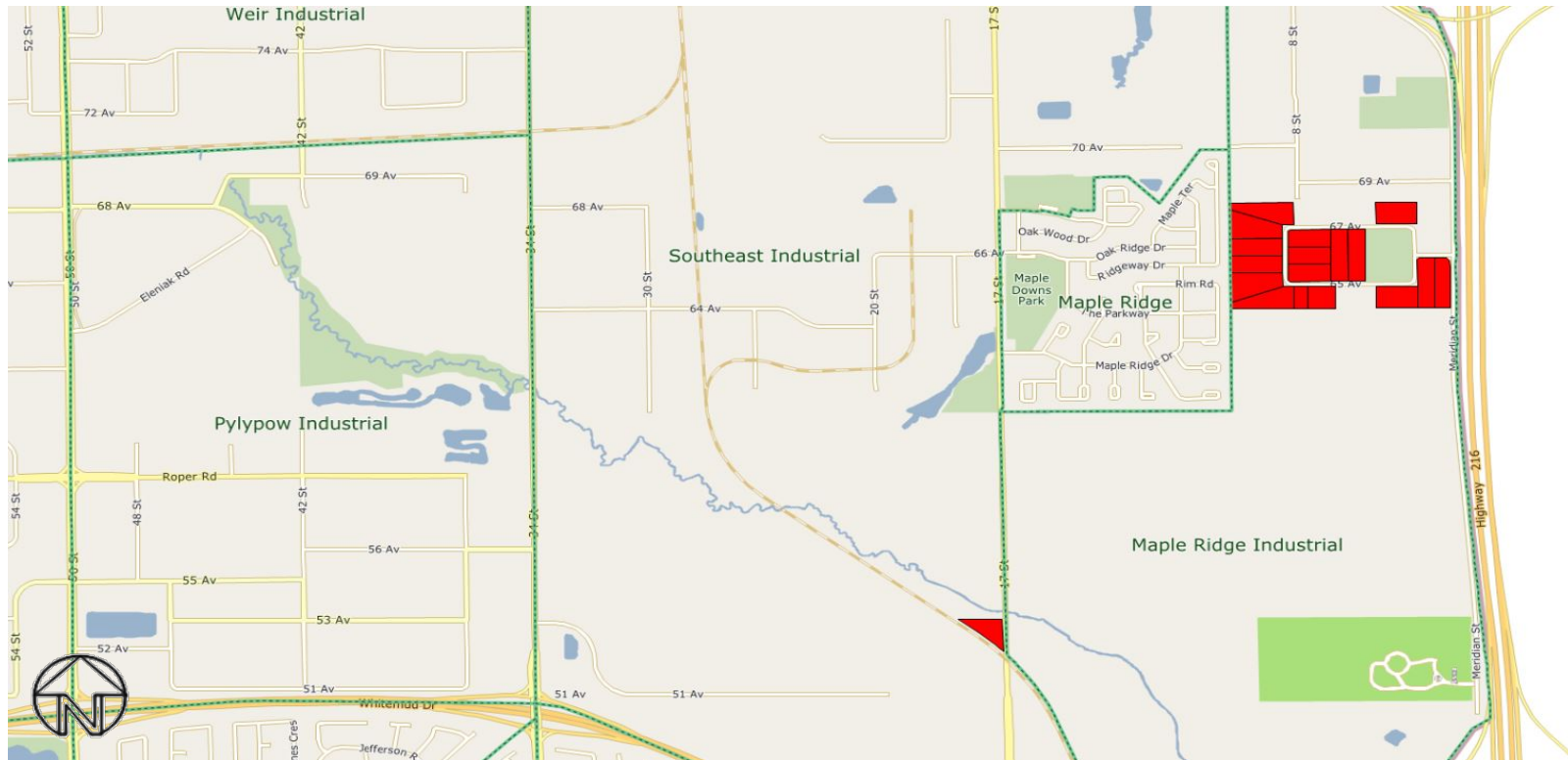
Rural Residential Study Area - Rural North East Horse Hill Neighbourhood

- Hillview Park (3058)
- Horse Hill and Tipperary (3059)


All rights reserved.

The information provided by this map is for reference purpose only. The City of Edmonton disclaims any liability for the use of this map. This map may not be published, broadcast, redrawn or redistributed in whole or in part without the express written permission of the City of Edmonton, Financial and Corporate Services Department.

Copyright © 2018 The City of Edmonton



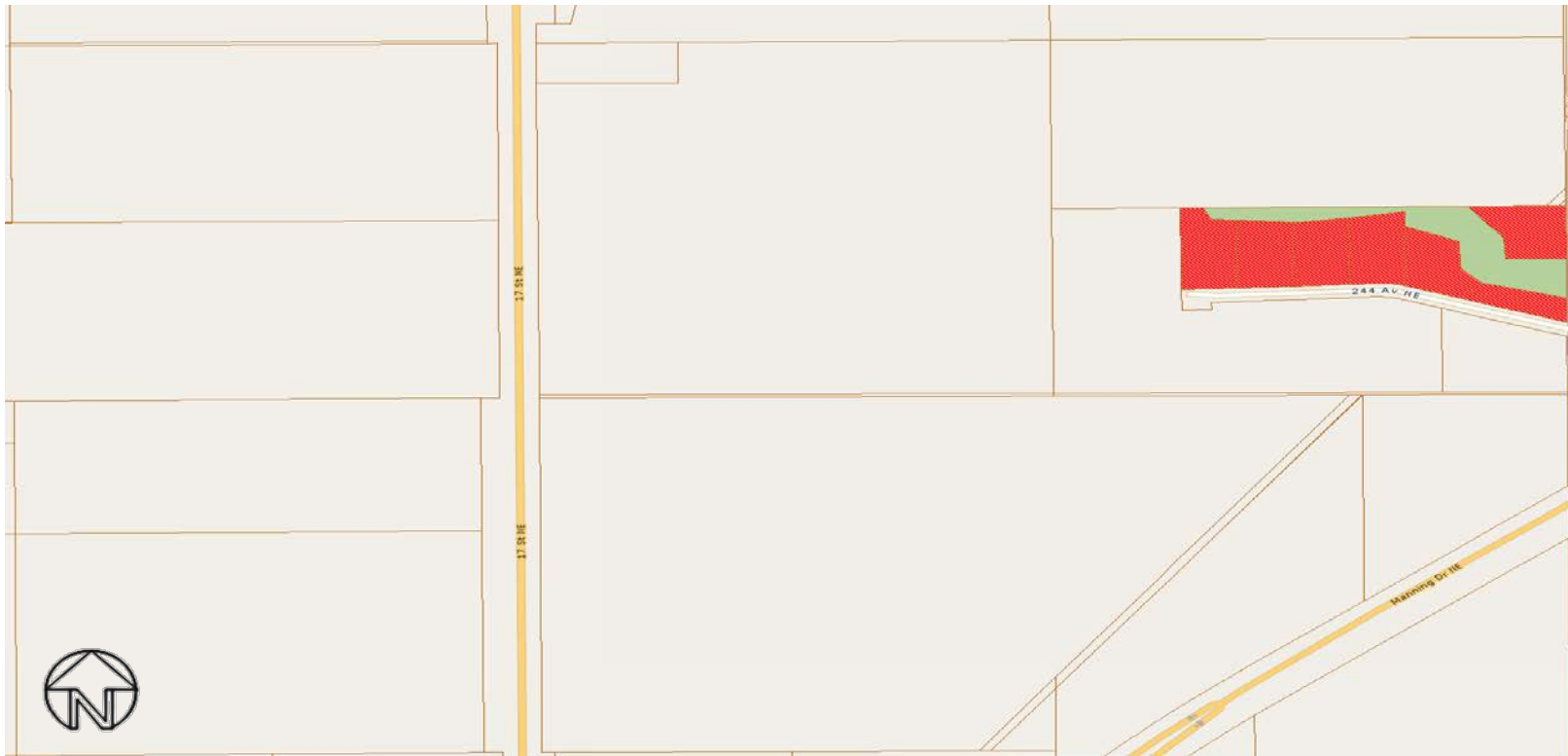
Rural Residential Study Area - Maple Ridge Industrial and Southeast (Annexed) Industrial Neighbourhoods

 Hurstwood Park (3060)

All rights reserved.

The information provided by this map is for reference purpose only. The City of Edmonton disclaims any liability for the use of this map. This map may not be published, broadcast, redrawn or redistributed in whole or in part without the express written permission of the City of Edmonton, Financial and Corporate Services Department.

Copyright © 2018 The City of Edmonton



Rural Residential Study Area - Edmonton Energy and Technology Park Neighbourhood

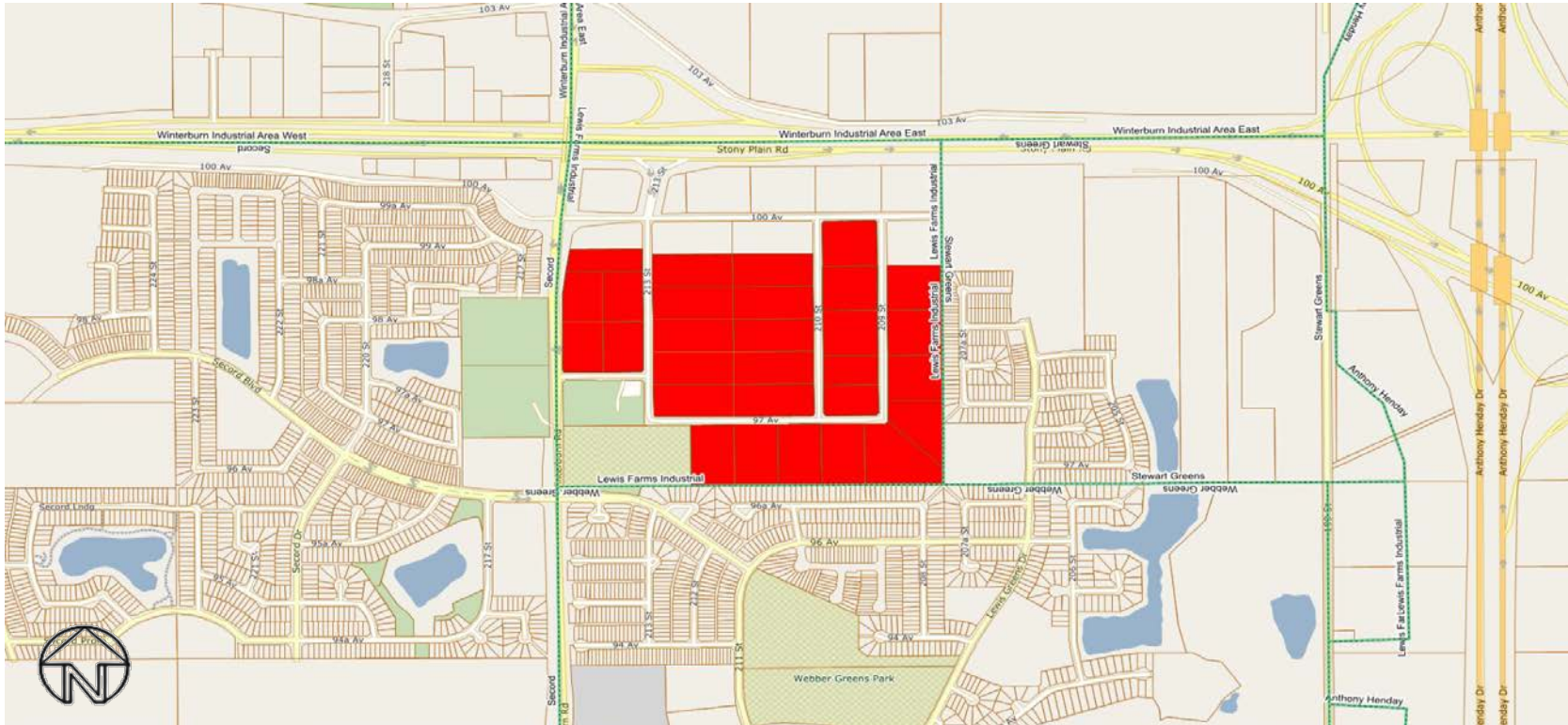


Johnson's Road (3061)

All rights reserved.

The information provided by this map is for reference purpose only. The City of Edmonton disclaims any liability for the use of this map. This map may not be published, broadcast, redrawn or redistributed in whole or in part without the express written permission of the City of Edmonton, Financial and Corporate Services Department.

Copyright © 2018 The City of Edmonton



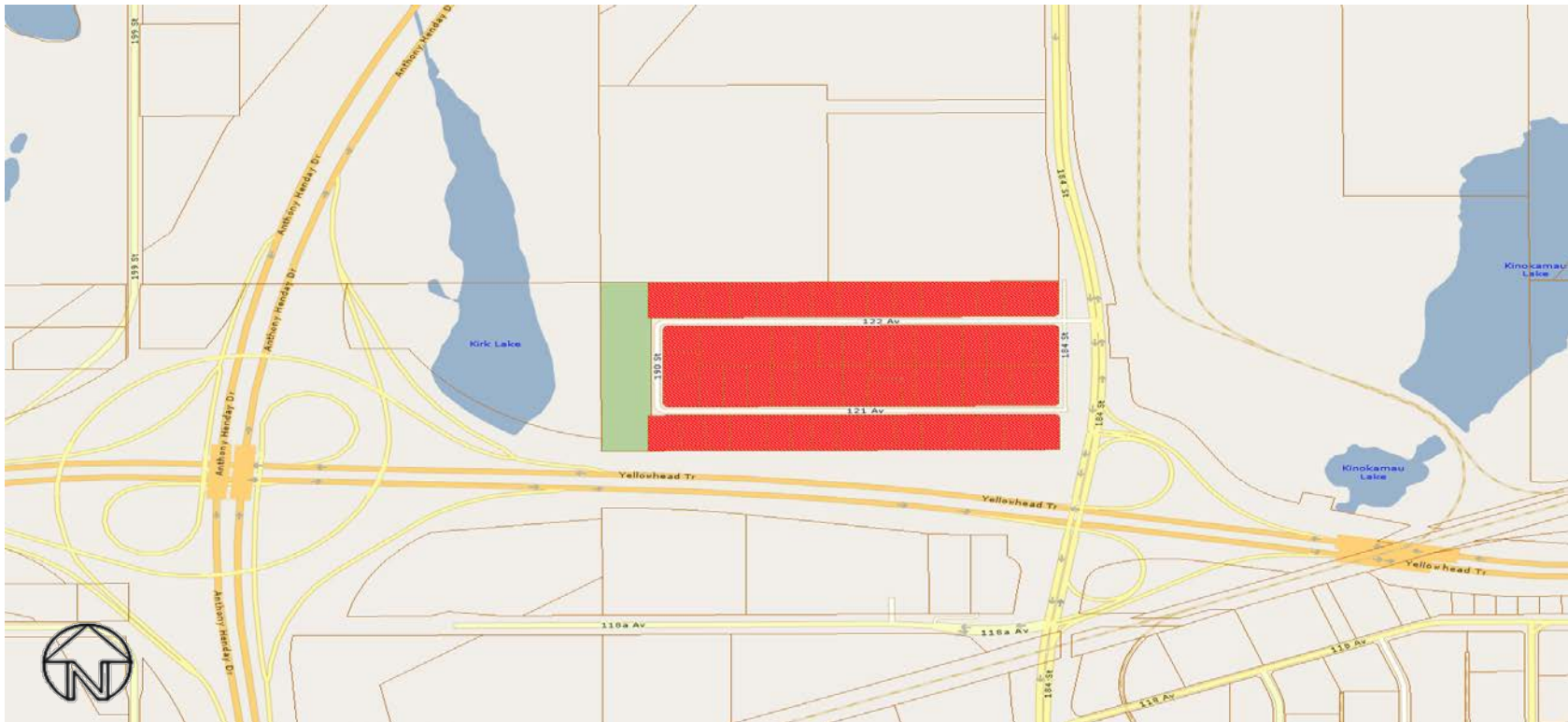
Rural Residential Study Area - Lewis Farms Industrial Neighbourhood

 Lewis Farms (3062)

All rights reserved.

The information provided by this map is for reference purpose only. The City of Edmonton disclaims any liability for the use of this map. This map may not be published, broadcast, redrawn or redistributed in whole or in part without the express written permission of the City of Edmonton, Financial and Corporate Services Department.

Copyright © 2018 The City of Edmonton



Rural Residential Study Area - Kinokamau Plains Area Neighbourhood

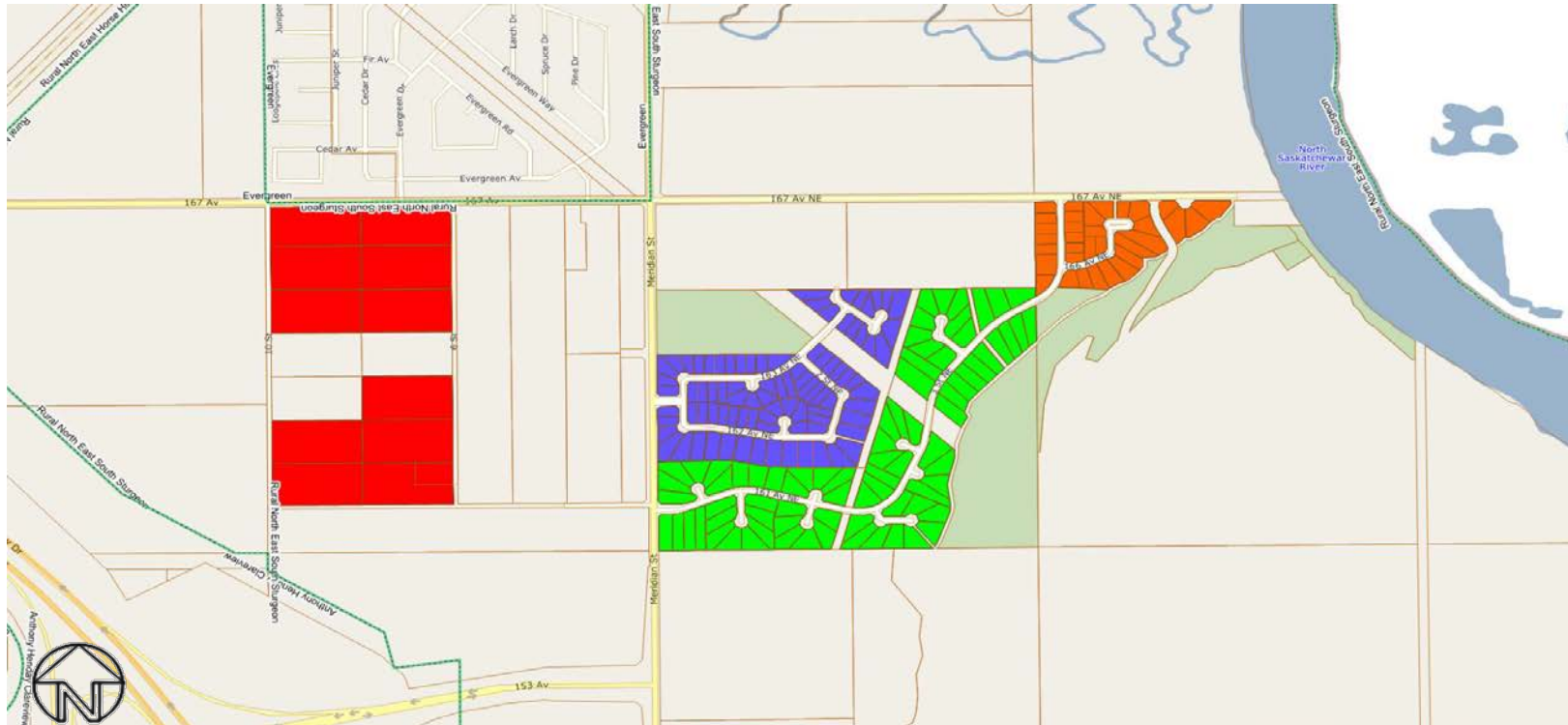


Mooncrest Park (3063)

All rights reserved.

The information provided by this map is for reference purpose only. The City of Edmonton disclaims any liability for the use of this map. This map may not be published, broadcast, redrawn or redistributed in whole or in part without the express written permission of the City of Edmonton, Financial and Corporate Services Department.

Copyright © 2018 The City of Edmonton



Rural Residential Study Area - Rural North East South Sturgeon Neighbourhood

Oliver Gardens (3064)

Quarry Ridge Phase 1 (3066)

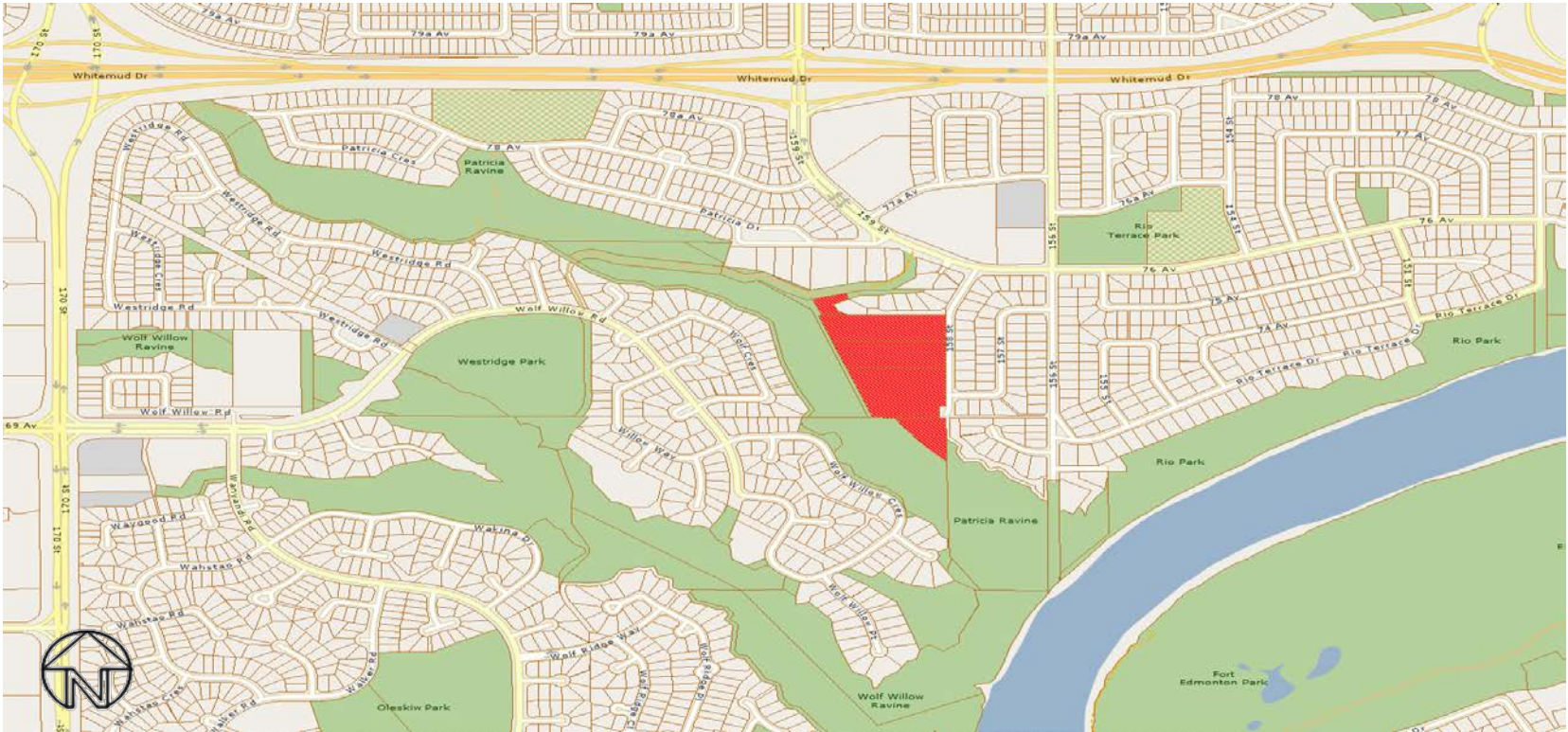
Quarry Ridge Phase 2 (3067)

Quarry Ridge Phase 3 (3086)

All rights reserved.

The information provided by this map is for reference purpose only. The City of Edmonton disclaims any liability for the use of this map. This map may not be published, broadcast, redrawn or redistributed in whole or in part without the express written permission of the City of Edmonton, Financial and Corporate Services Department.

Copyright © 2018 The City of Edmonton



Rural Residential Study Area - Patricia Heights Neighbourhood

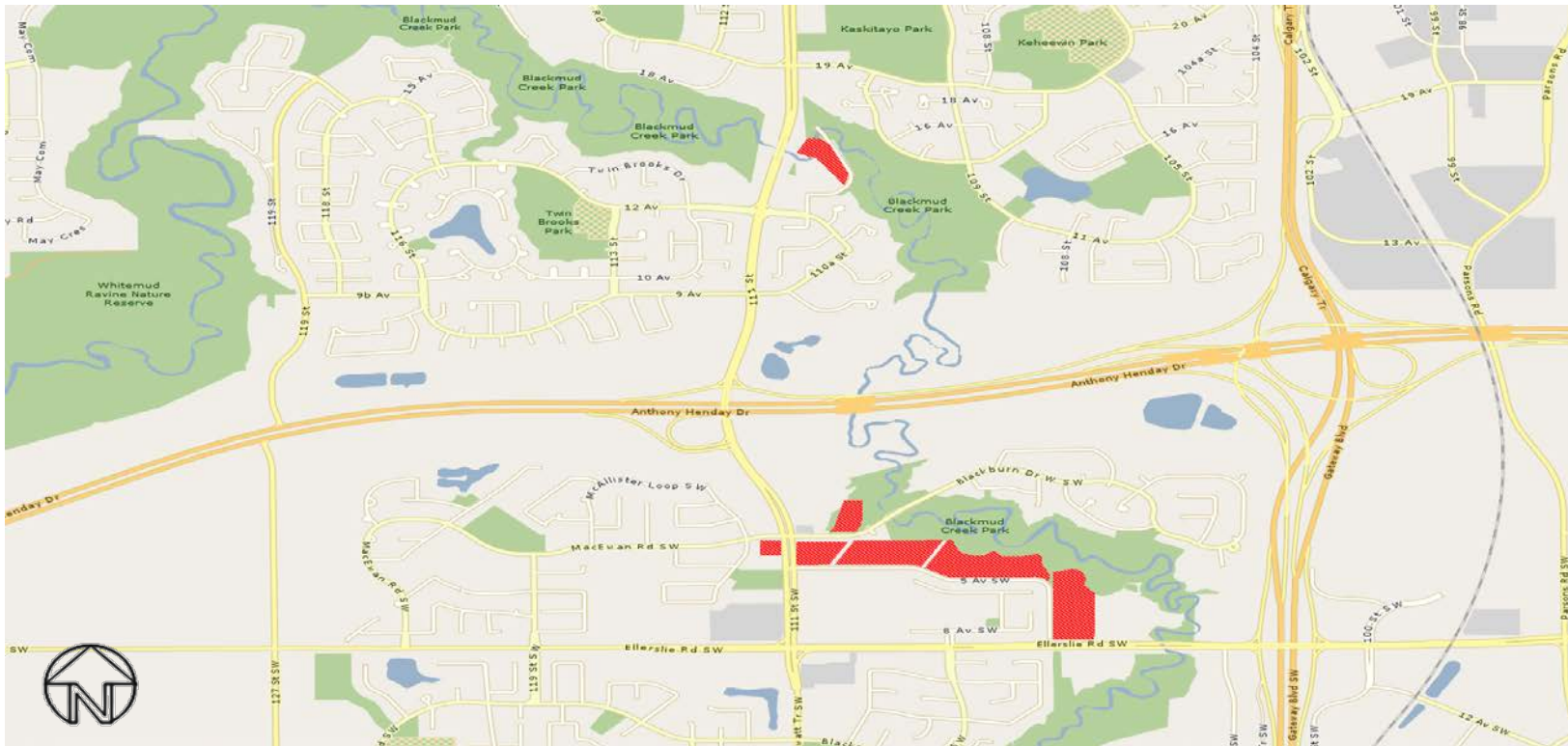


Patricia Heights (3065)

All rights reserved.

The information provided by this map is for reference purpose only. The City of Edmonton disclaims any liability for the use of this map. This map may not be published, broadcast, redrawn or redistributed in whole or in part without the express written permission of the City of Edmonton, Financial and Corporate Services Department.

Copyright © 2018 The City of Edmonton



Rural Residential Study Area - Richford and Blackmud Creek Ravine Neighbourhoods

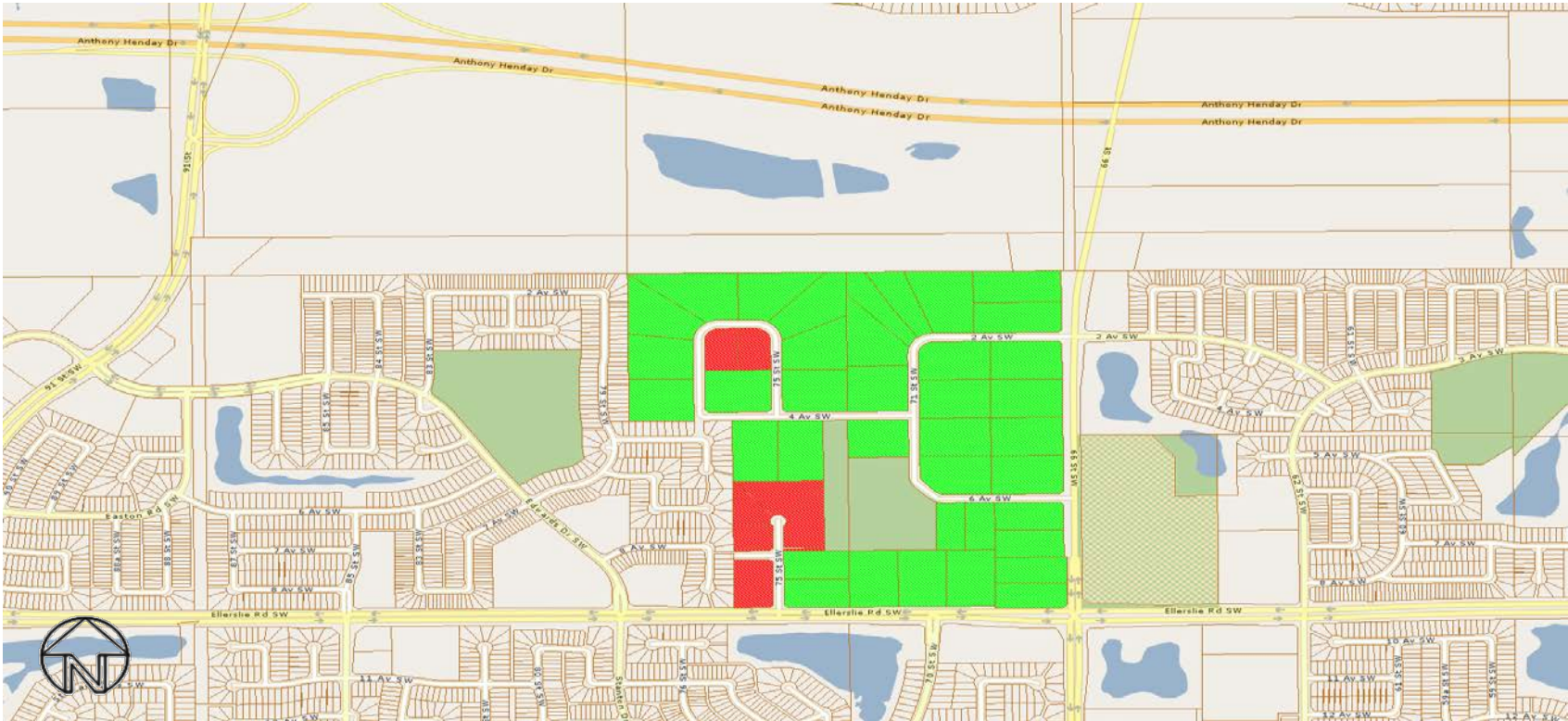


Richford Estates (3069)

All rights reserved.


The information provided by this map is for reference purpose only. The City of Edmonton disclaims any liability for the use of this map. This map may not be published, broadcast, redrawn or redistributed in whole or in part without the express written permission of the City of Edmonton, Financial and Corporate Services Department.

Copyright © 2018 The City of Edmonton



Rural Residential Study Area - Ellerslie Neighbourhood

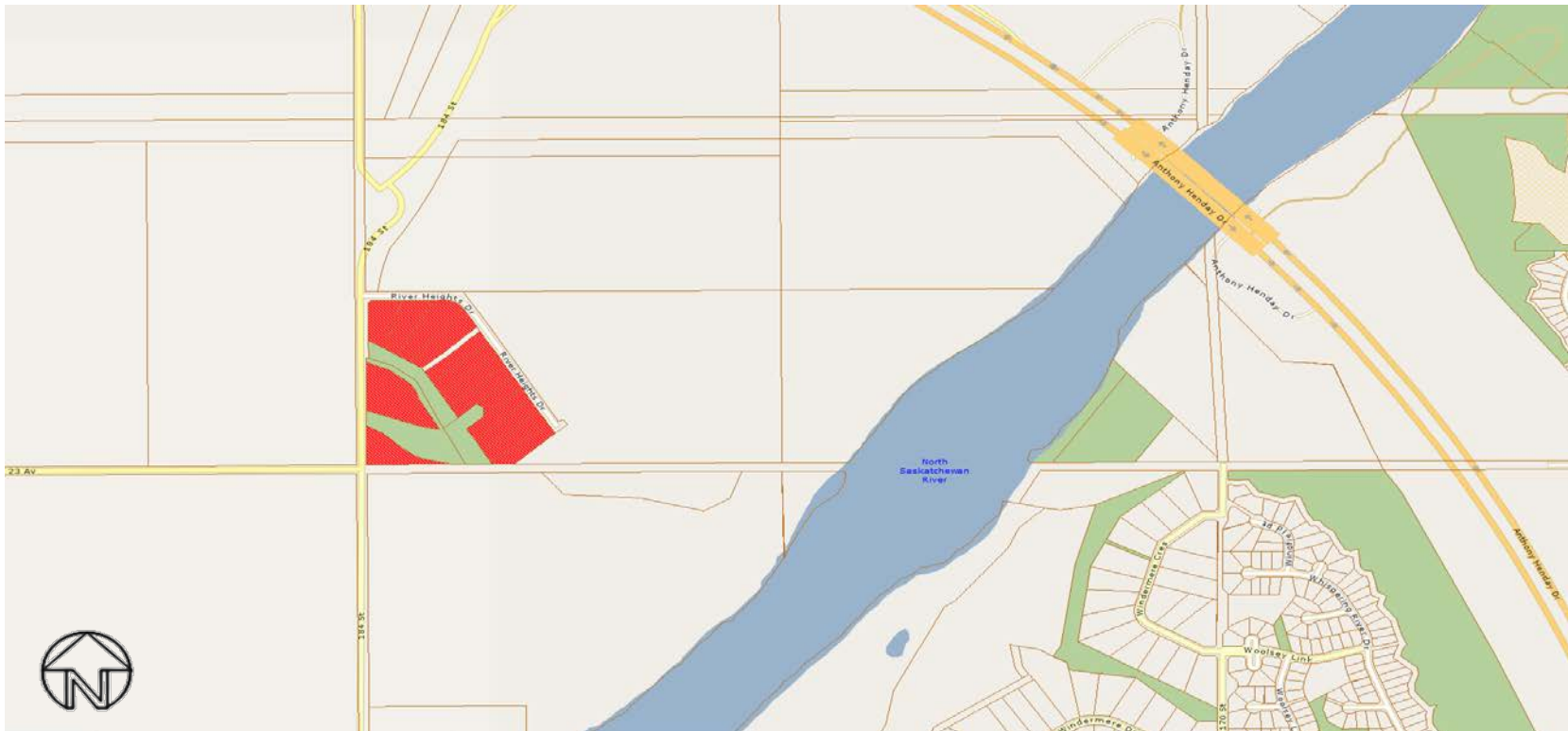
 Rimrock Estates (3070)

 Wernerville (3081)

All rights reserved.

The information provided by this map is for reference purpose only. The City of Edmonton disclaims any liability for the use of this map. This map may not be published, broadcast, redrawn or redistributed in whole or in part without the express written permission of the City of Edmonton, Financial and Corporate Services Department.

Copyright © 2018 The City of Edmonton



Rural Residential Study Area - River's Edge Neighbourhood



Riverside Heights (3071)

All rights reserved.

The information provided by this map is for reference purpose only. The City of Edmonton disclaims any liability for the use of this map. This map may not be published, broadcast, redrawn or redistributed in whole or in part without the express written permission of the City of Edmonton, Financial and Corporate Services Department.

Copyright © 2018 The City of Edmonton



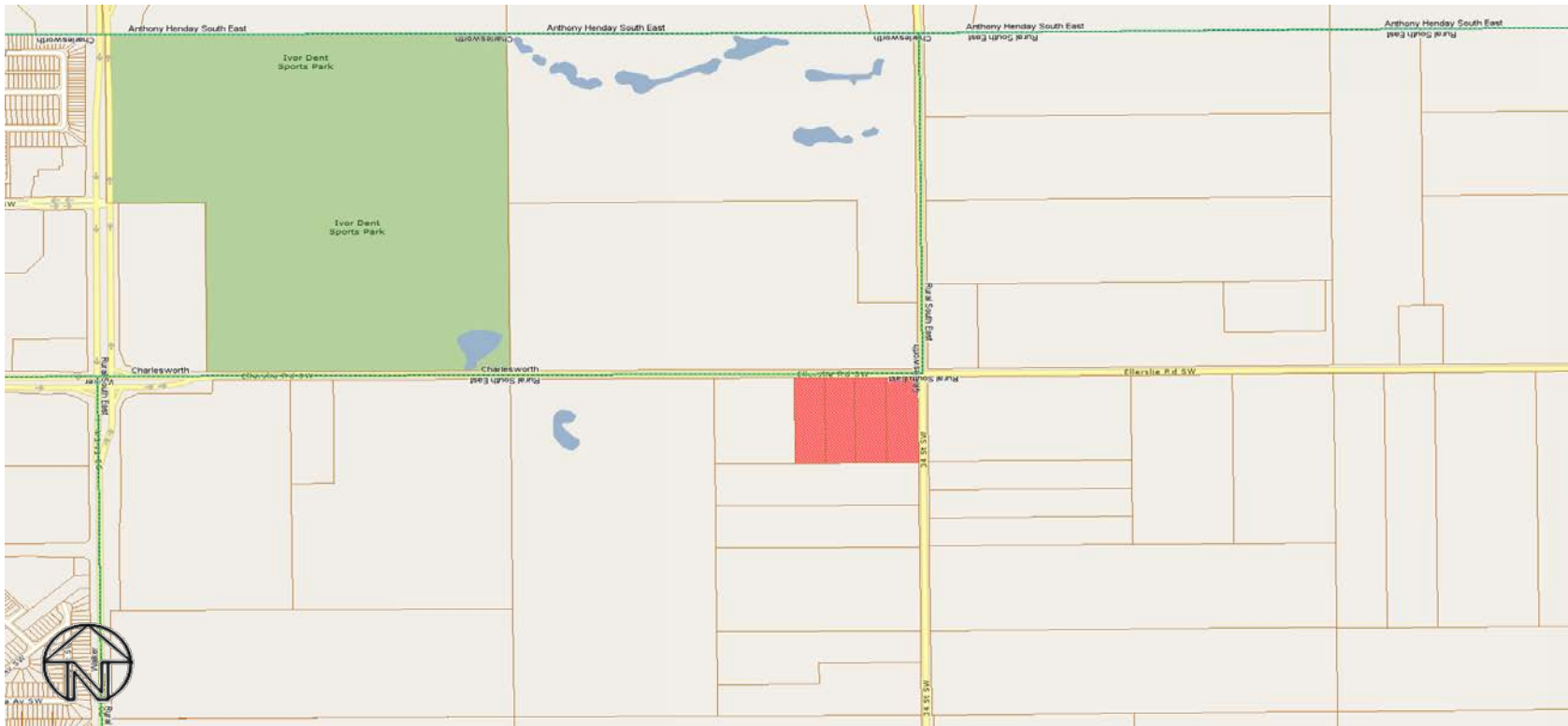
Rural Residential Study Area - Various Neighbourhoods

 River Valley Isolated (3074)


All rights reserved.

The information provided by this map is for reference purpose only. The City of Edmonton disclaims any liability for the use of this map. This map may not be published, broadcast, redrawn or redistributed in whole or in part without the express written permission of the City of Edmonton, Financial and Corporate Services Department.

Copyright © 2018 The City of Edmonton



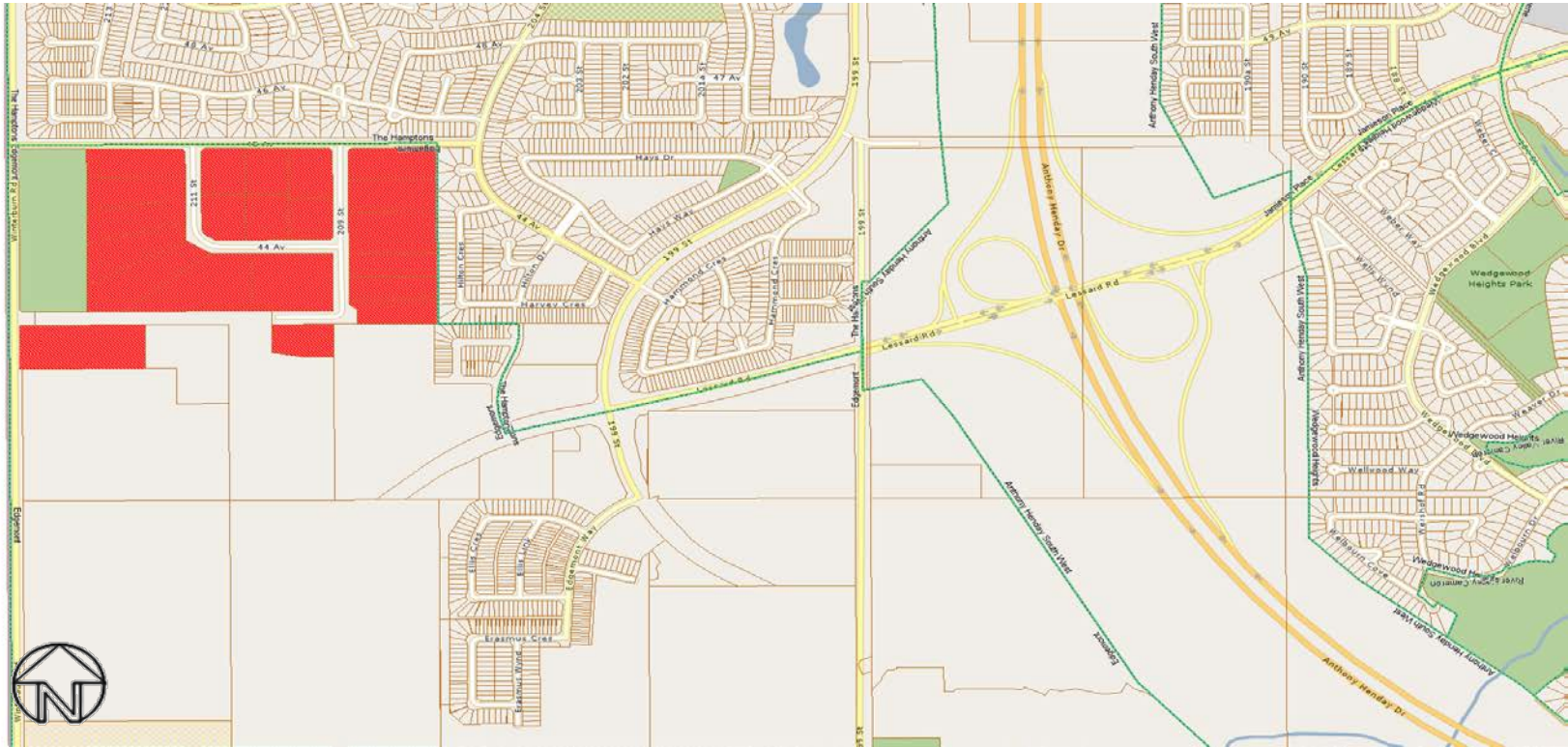
Rural Residential Study Area - Decoteau Neighbourhood

 Ellerslie Road / 34 Street (3075)

All rights reserved.

The information provided by this map is for reference purpose only. The City of Edmonton disclaims any liability for the use of this map. This map may not be published, broadcast, redrawn or redistributed in whole or in part without the express written permission of the City of Edmonton, Financial and Corporate Services Department.

Copyright © 2018 The City of Edmonton



Rural Residential Study Area - Edgemont Neighbourhood

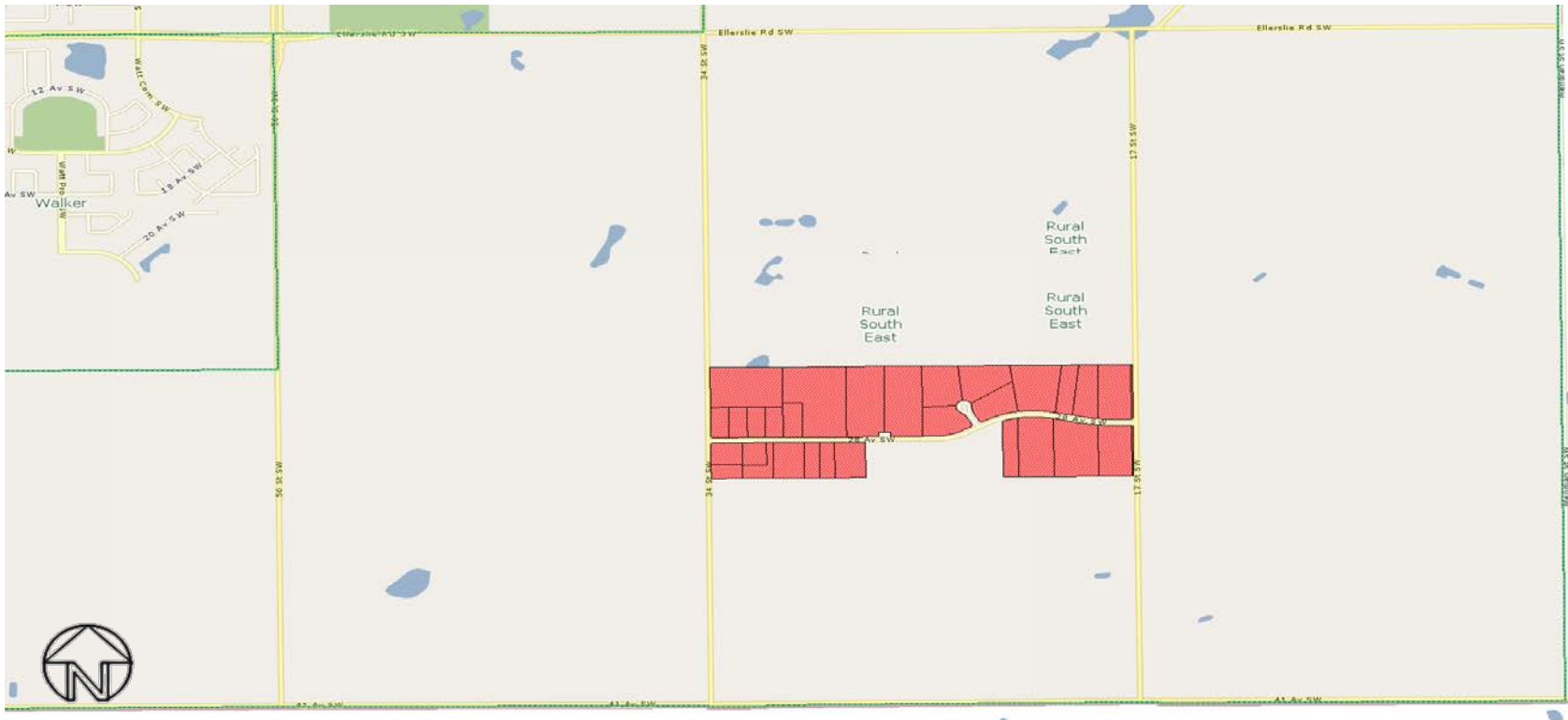


Triple A Acres (3078)

All rights reserved.

The information provided by this map is for reference purpose only. The City of Edmonton disclaims any liability for the use of this map. This map may not be published, broadcast, redrawn or redistributed in whole or in part without the express written permission of the City of Edmonton, Financial and Corporate Services Department.

Copyright © 2018 The City of Edmonton



Rural Residential Study Area - Decoteau Neighbourhood

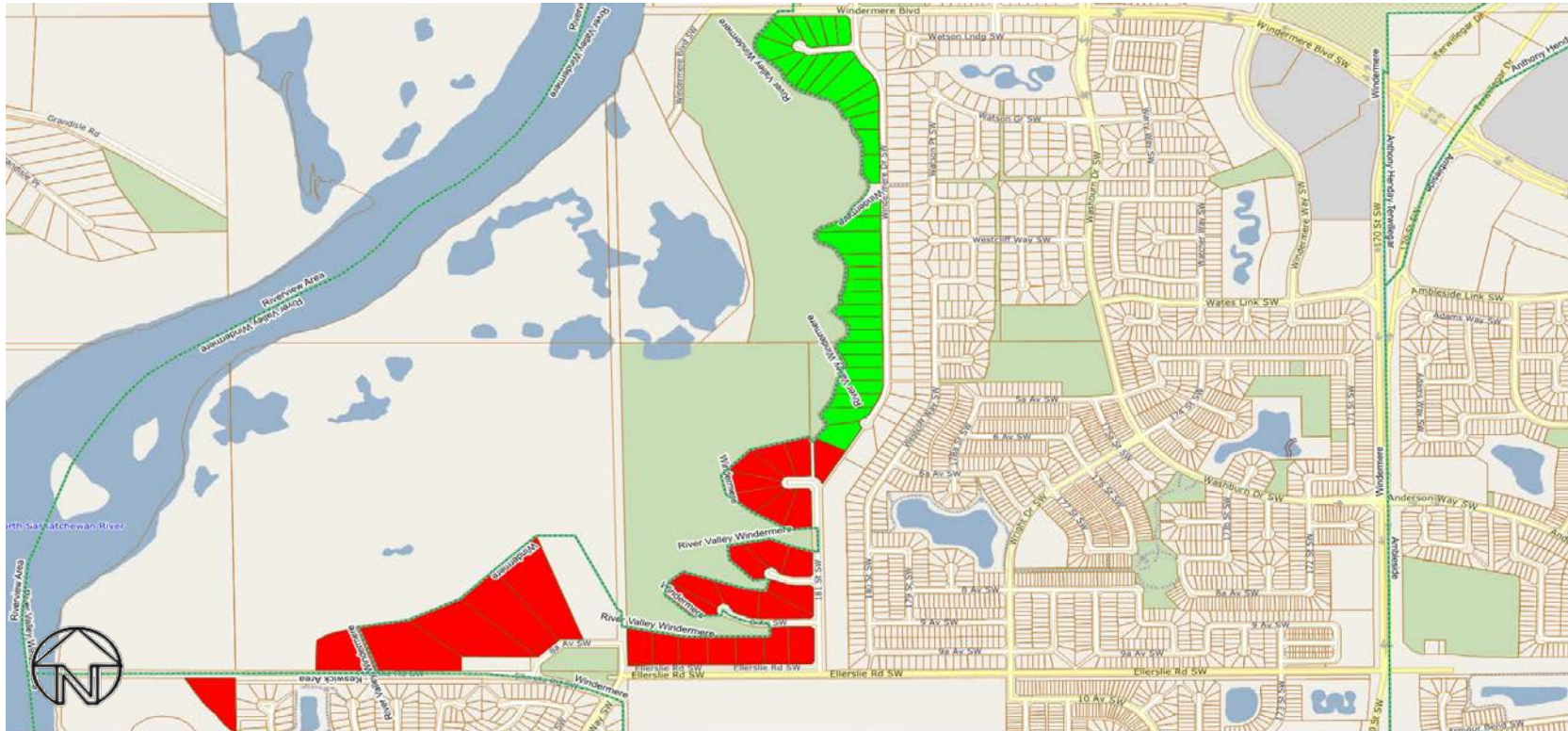


Ward Heights / Reppert Heights (3079)

All rights reserved.

The information provided by this map is for reference purpose only. The City of Edmonton disclaims any liability for the use of this map. This map may not be published, broadcast, redrawn or redistributed in whole or in part without the express written permission of the City of Edmonton, Financial and Corporate Services Department.

Copyright © 2018 The City of Edmonton



Rural Residential Study Area - Windermere/River Valley Windermere/Keswick Area Neighbourhoods

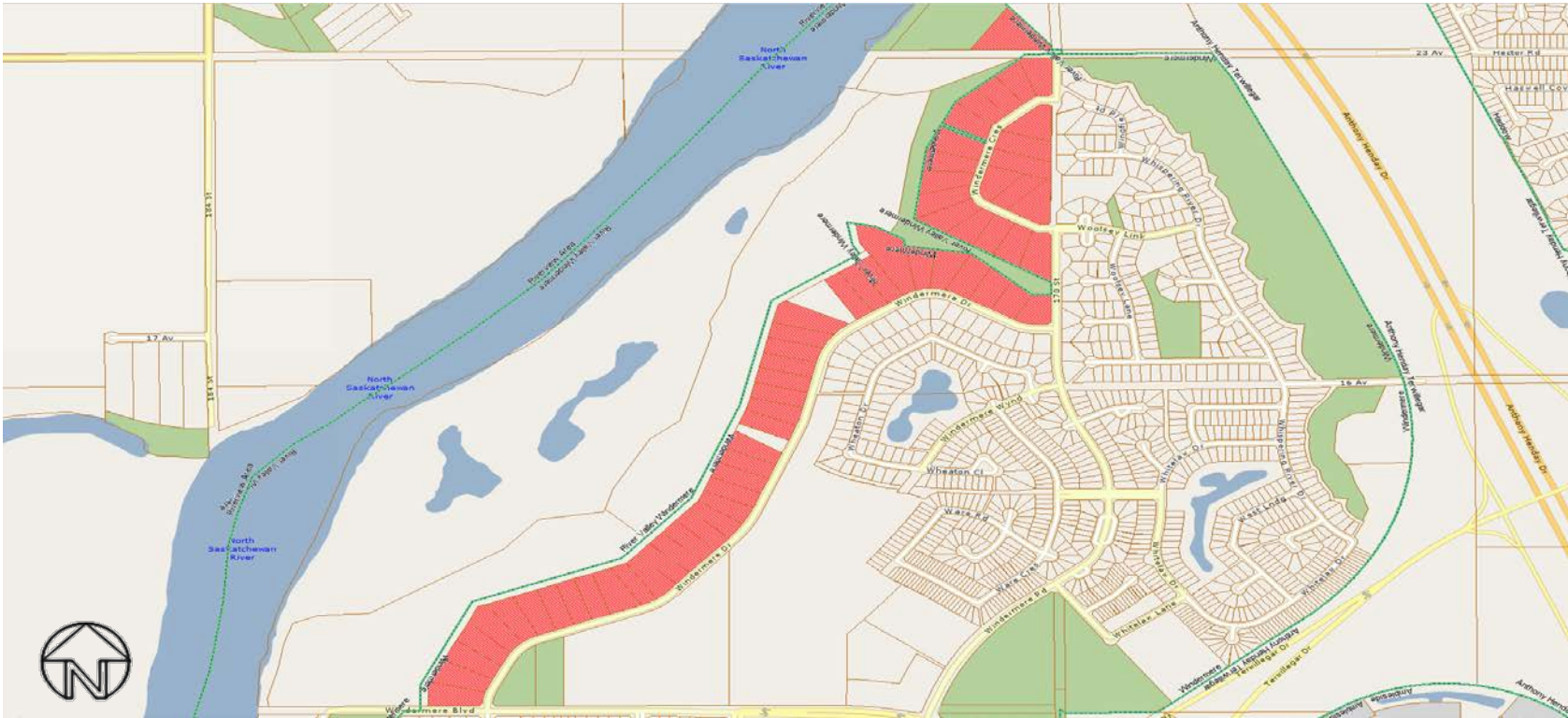
West Point Estates (3082)

Windermere Ridge (3084)

All rights reserved.

The information provided by this map is for reference purpose only. The City of Edmonton disclaims any liability for the use of this map. This map may not be published, broadcast, redrawn or redistributed in whole or in part without the express written permission of the City of Edmonton, Financial and Corporate Services Department.

Copyright © 2018 The City of Edmonton



Rural Residential Study Area - Windermere/River Valley Windermere Neighbourhoods

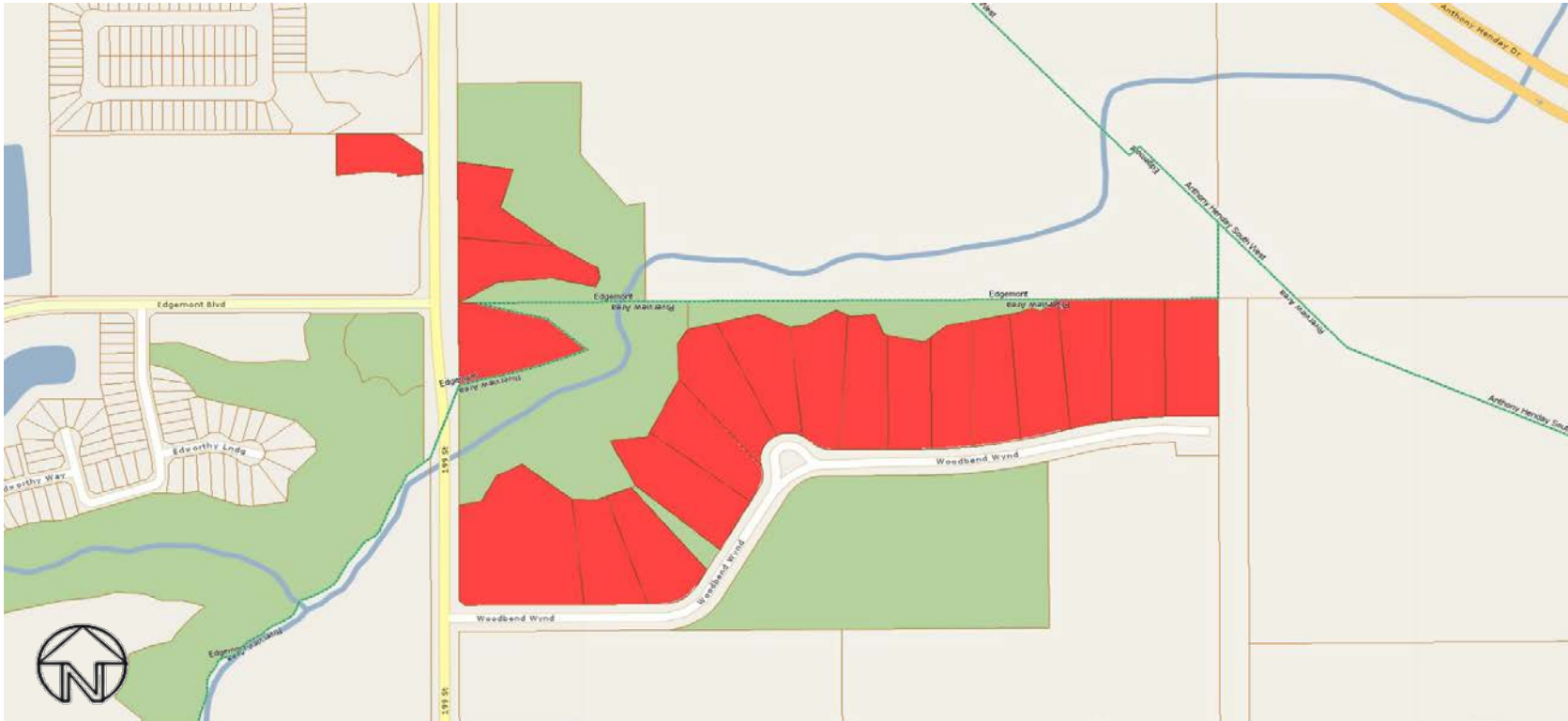


Windermere Estates (3083)

All rights reserved.

The information provided by this map is for reference purpose only. The City of Edmonton disclaims any liability for the use of this map. This map may not be published, broadcast, redrawn or redistributed in whole or in part without the express written permission of the City of Edmonton, Financial and Corporate Services Department.

Copyright © 2018 The City of Edmonton



Rural Residential Study Area - Edgemont / The Uplands Neighbourhoods

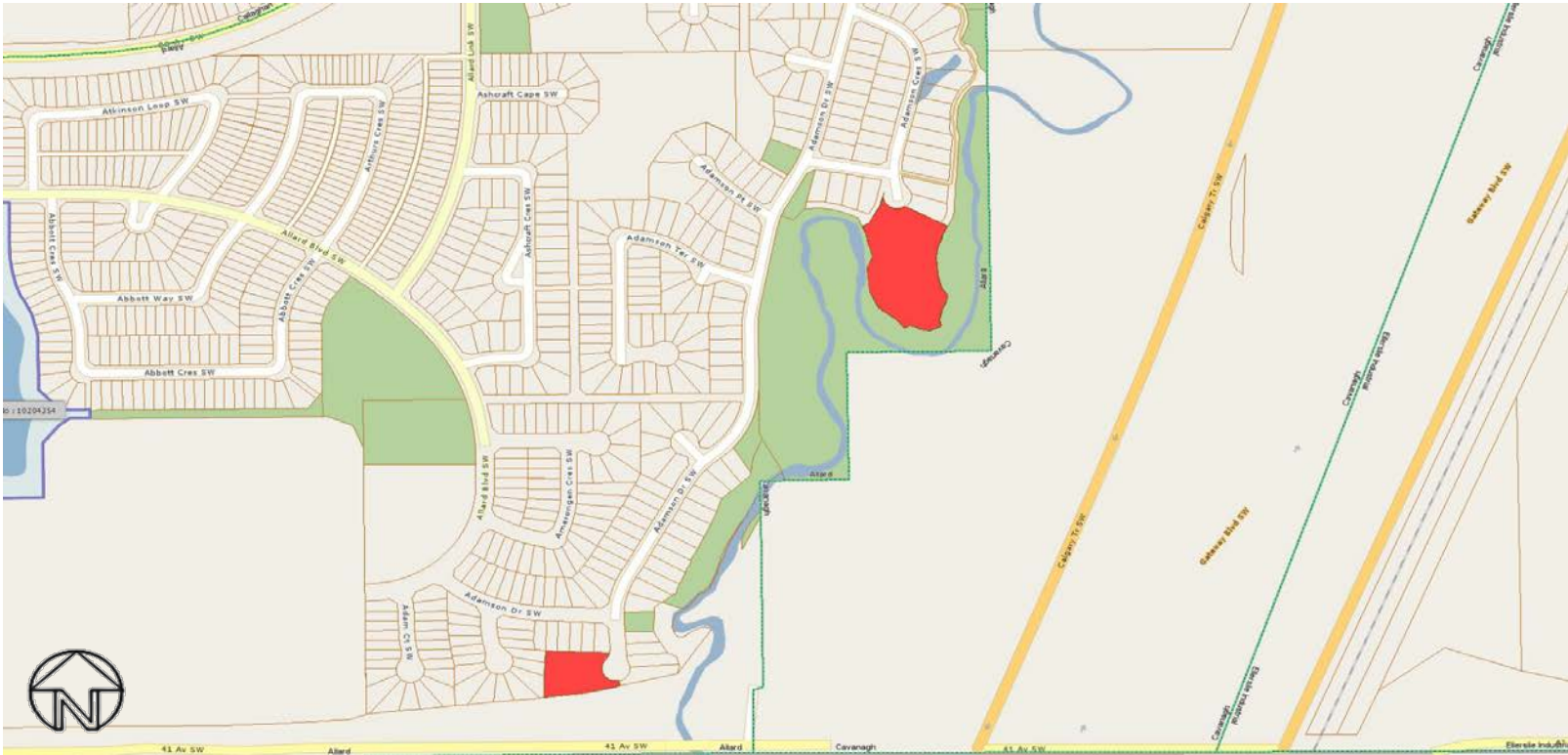


Woodbend Estates (3085)

All rights reserved.

The information provided by this map is for reference purpose only. The City of Edmonton disclaims any liability for the use of this map. This map may not be published, broadcast, redrawn or redistributed in whole or in part without the express written permission of the City of Edmonton, Financial and Corporate Services Department.

Copyright © 2018 The City of Edmonton



Rural Residential Study Area - Allard Neighbourhood

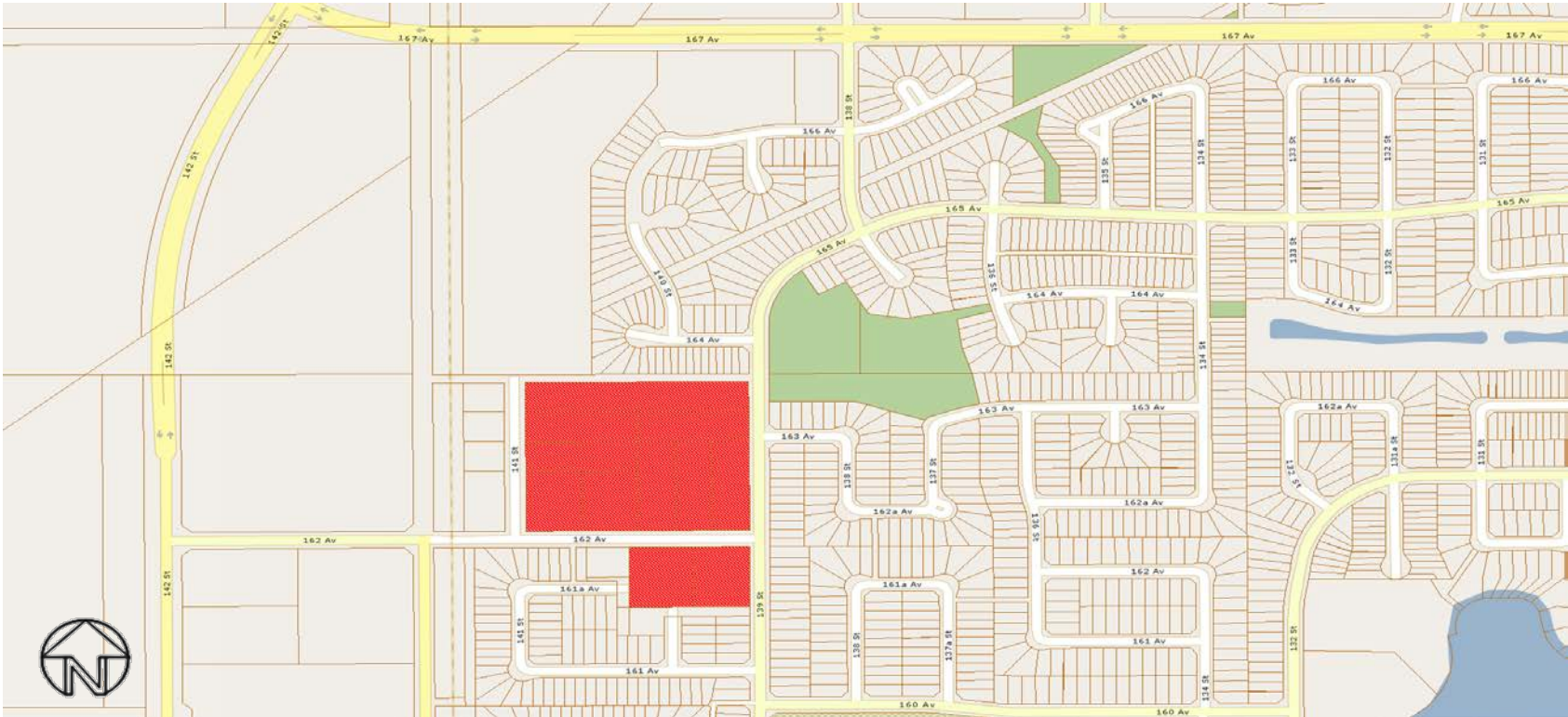


Allard (3088)

All rights reserved.

The information provided by this map is for reference purpose only. The City of Edmonton disclaims any liability for the use of this map. This map may not be published, broadcast, redrawn or redistributed in whole or in part without the express written permission of the City of Edmonton, Financial and Corporate Services Department.

Copyright © 2018 The City of Edmonton



Rural Residential Study Area - Carlton Neighbourhood

 Carlton (3089)

All rights reserved.

The information provided by this map is for reference purpose only. The City of Edmonton disclaims any liability for the use of this map. This map may not be published, broadcast, redrawn or redistributed in whole or in part without the express written permission of the City of Edmonton, Financial and Corporate Services Department.

Copyright © 2018 The City of Edmonton