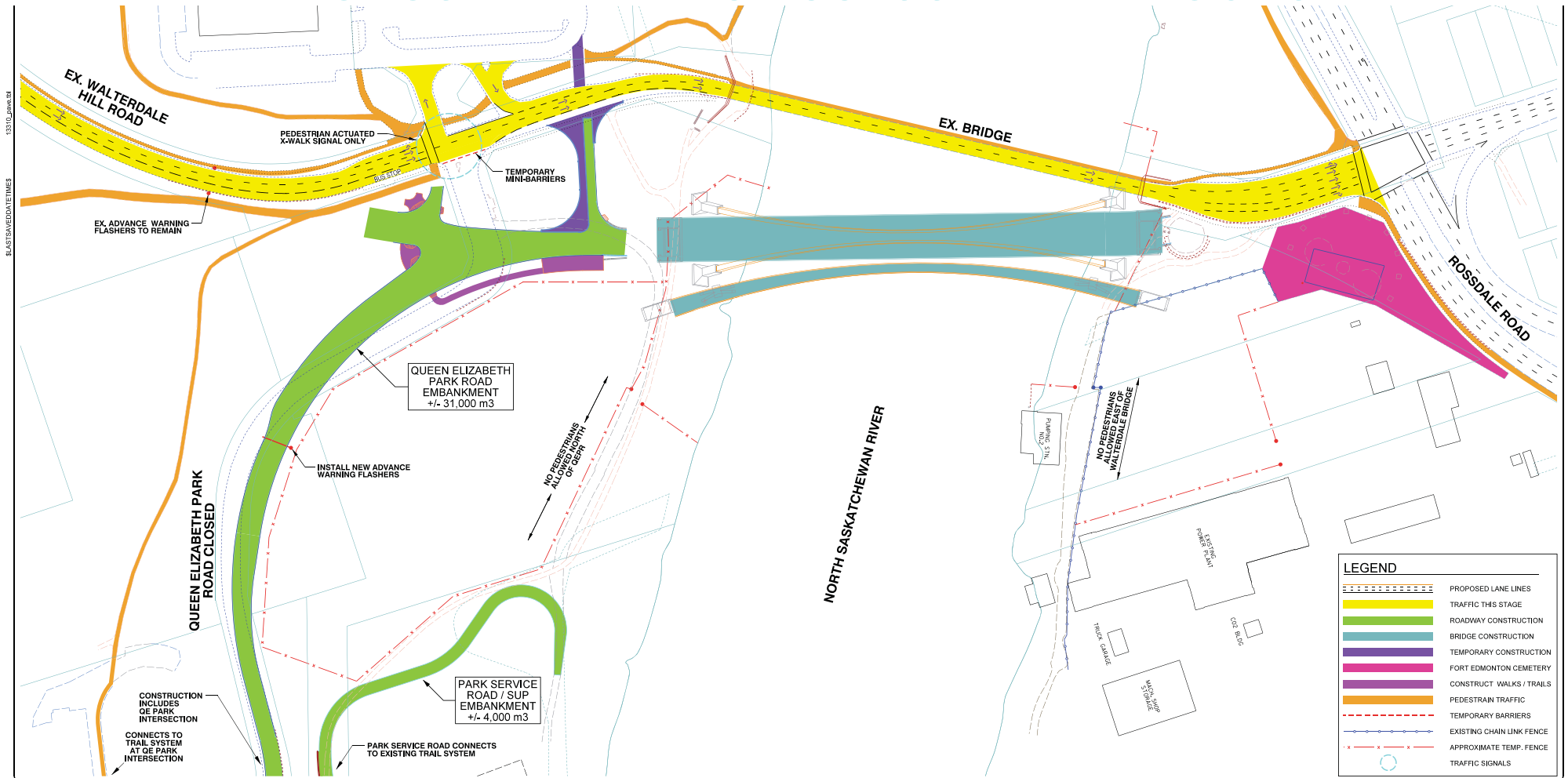


PROPOSED TRAFFIC ACCESS AND DETOURS

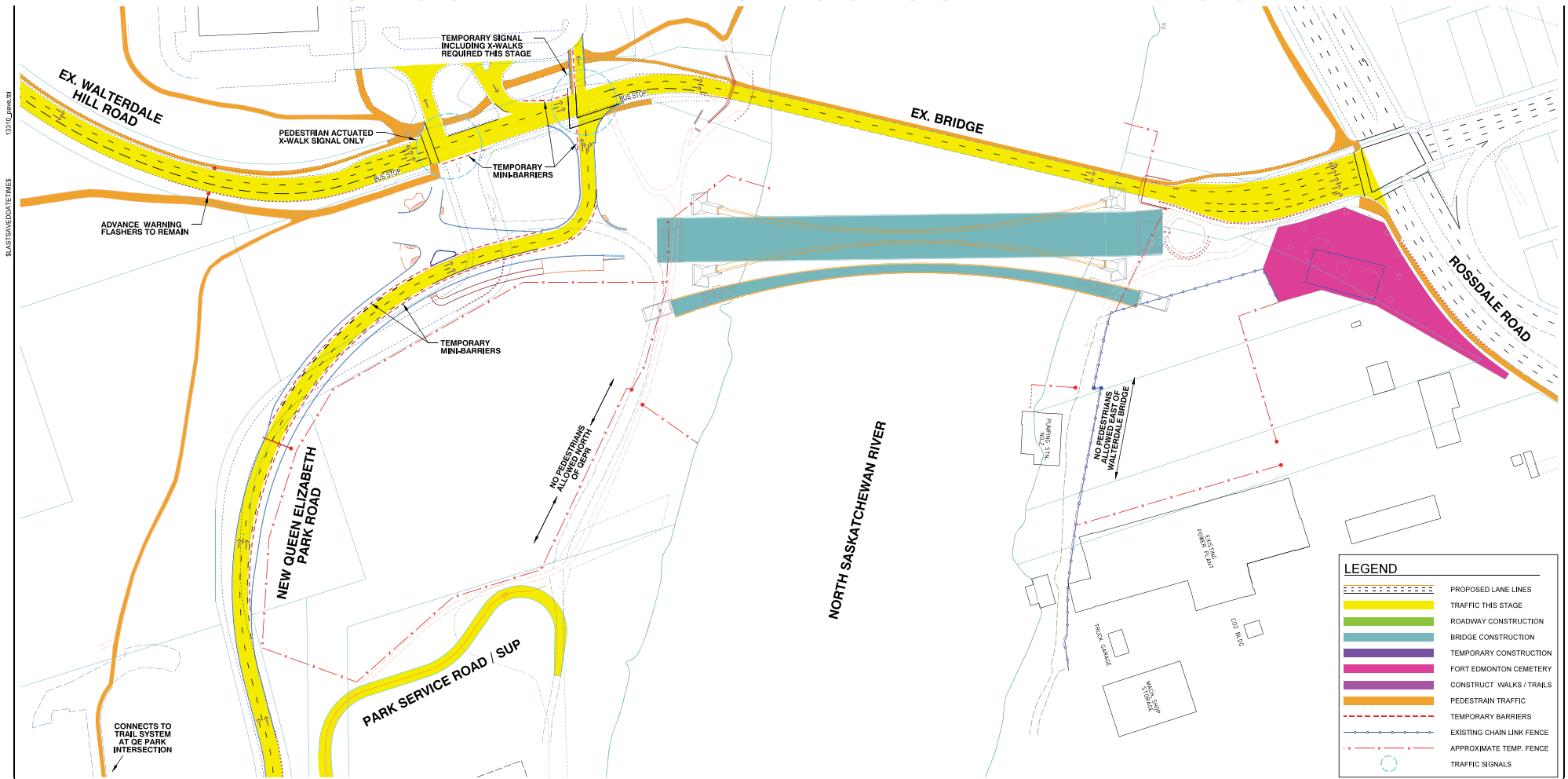
- The old bridge will remain open during construction.
- Either Queen Elizabeth Park Road or Walterdale Hill Road will be open at all times and both roads will be open in the winter.
- We will be notifying the public in advance of road closures throughout the project.
- Some short full closures may be required for final construction connections.
- If you would like to be informed about project updates or construction detours via email please sign up at the welcome desk or on our website at www.edmonton.ca/walterdalebridge

PROPOSED TRAFFIC ACCESS AND DETOURS



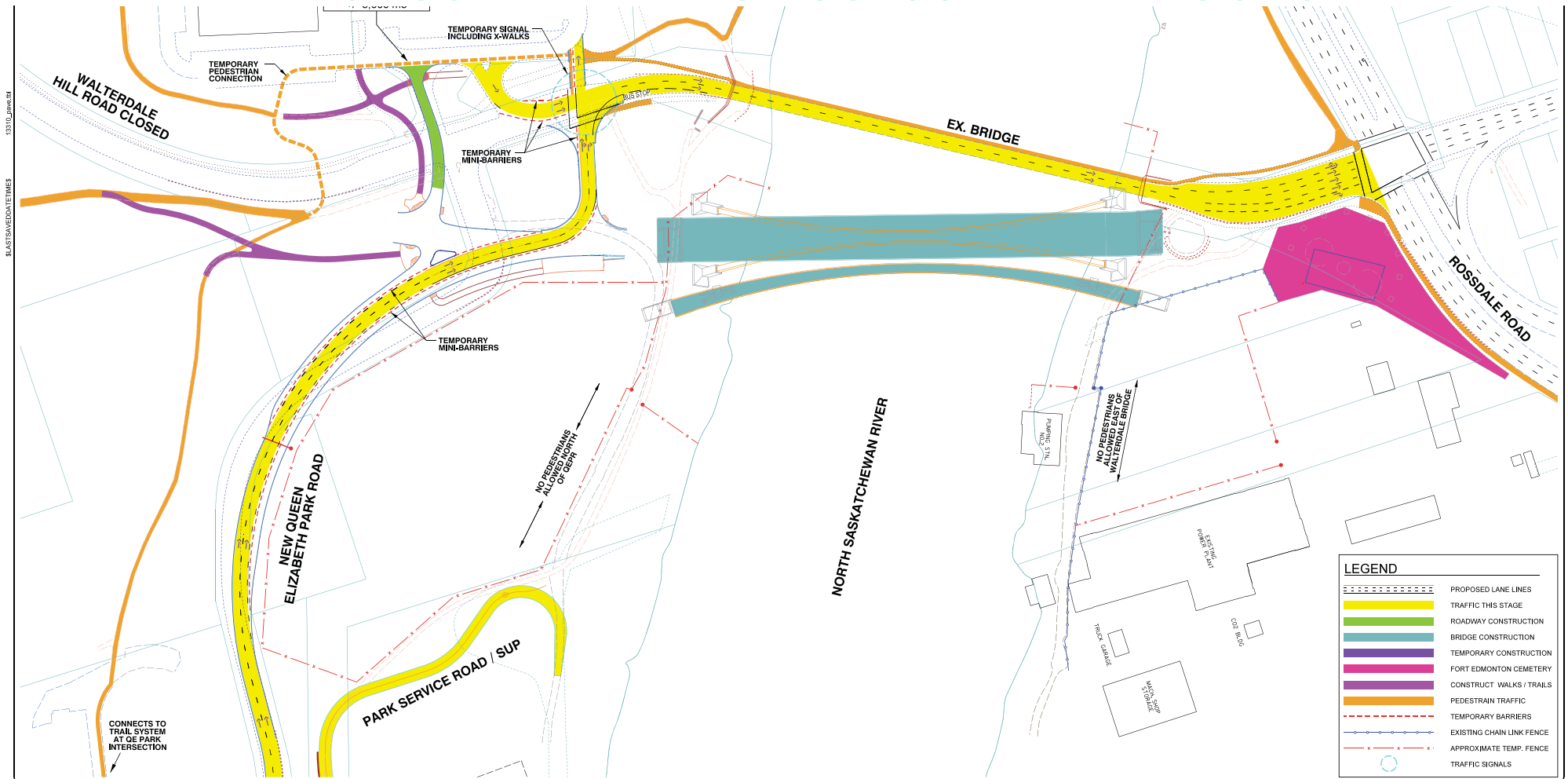
Stage 1: Queen Elizabeth Park Road closed to traffic Spring to Fall 2013

PROPOSED TRAFFIC ACCESS AND DETOURS

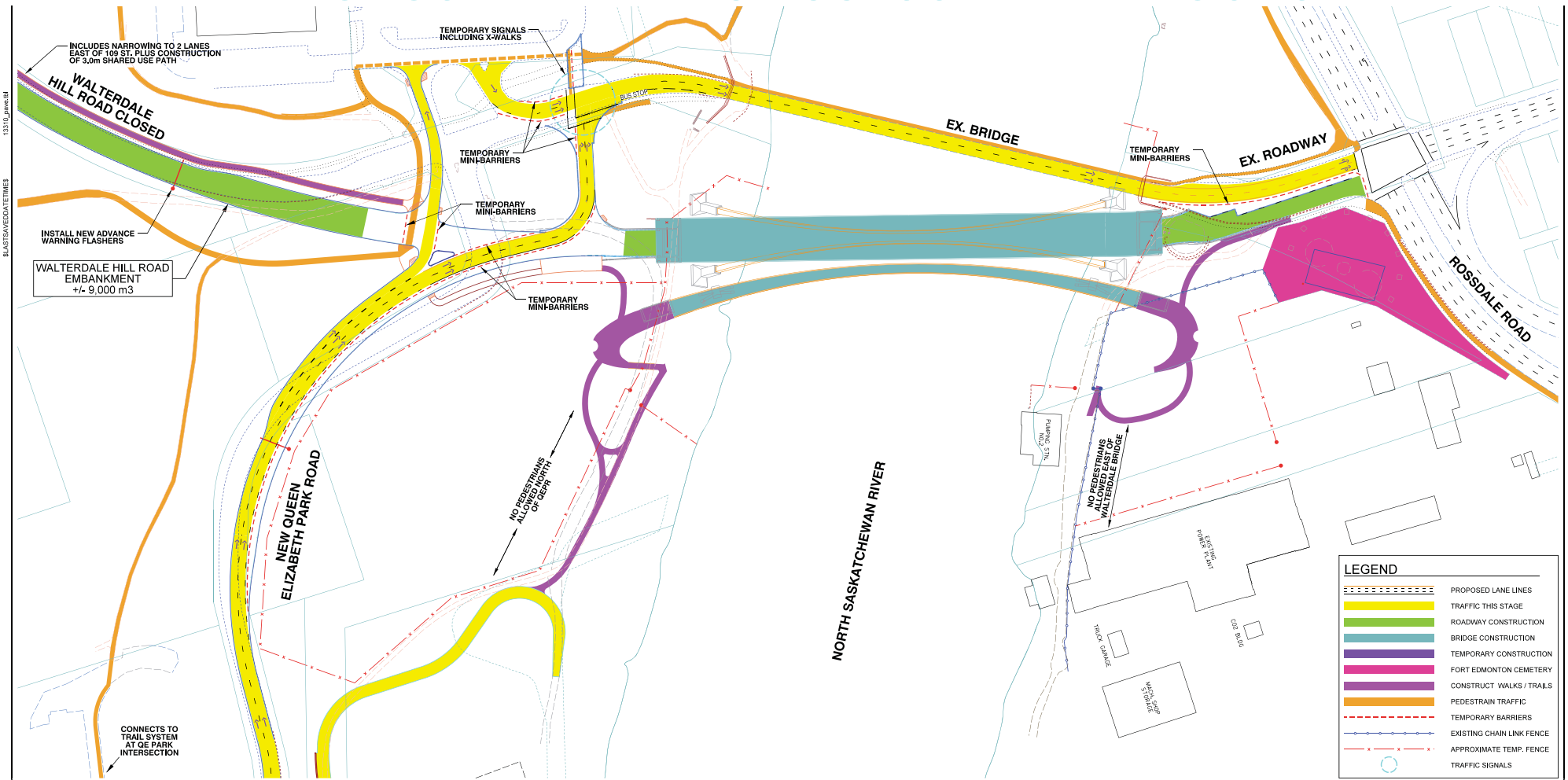


Stage 2: Queen Elizabeth Park Road and park service road/Shared Use Pathway (SUP), and Walterdale Hill Road open for traffic winter 2013 and winter 2014.

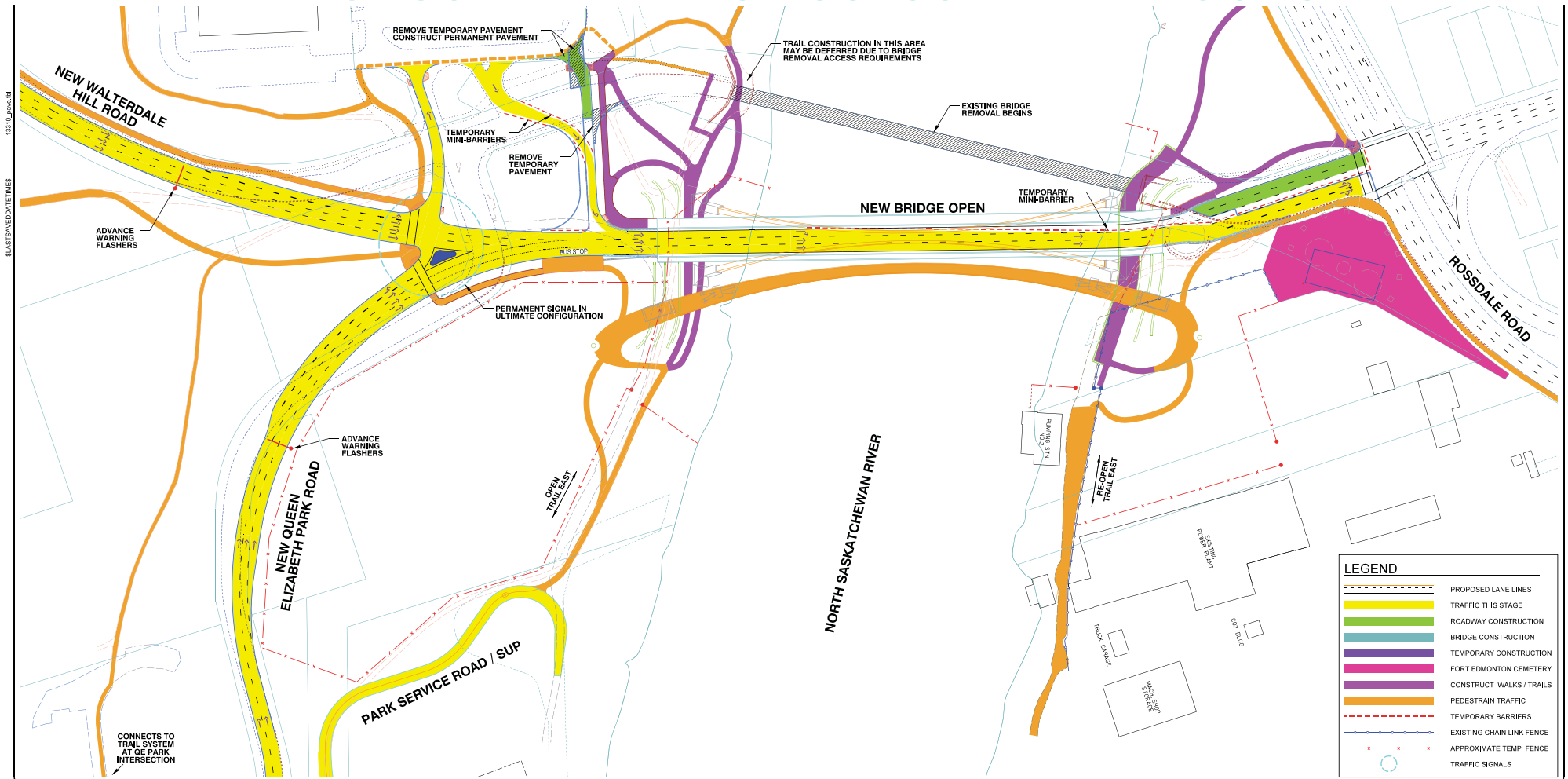
PROPOSED TRAFFIC ACCESS AND DETOURS



PROPOSED TRAFFIC ACCESS AND DETOURS

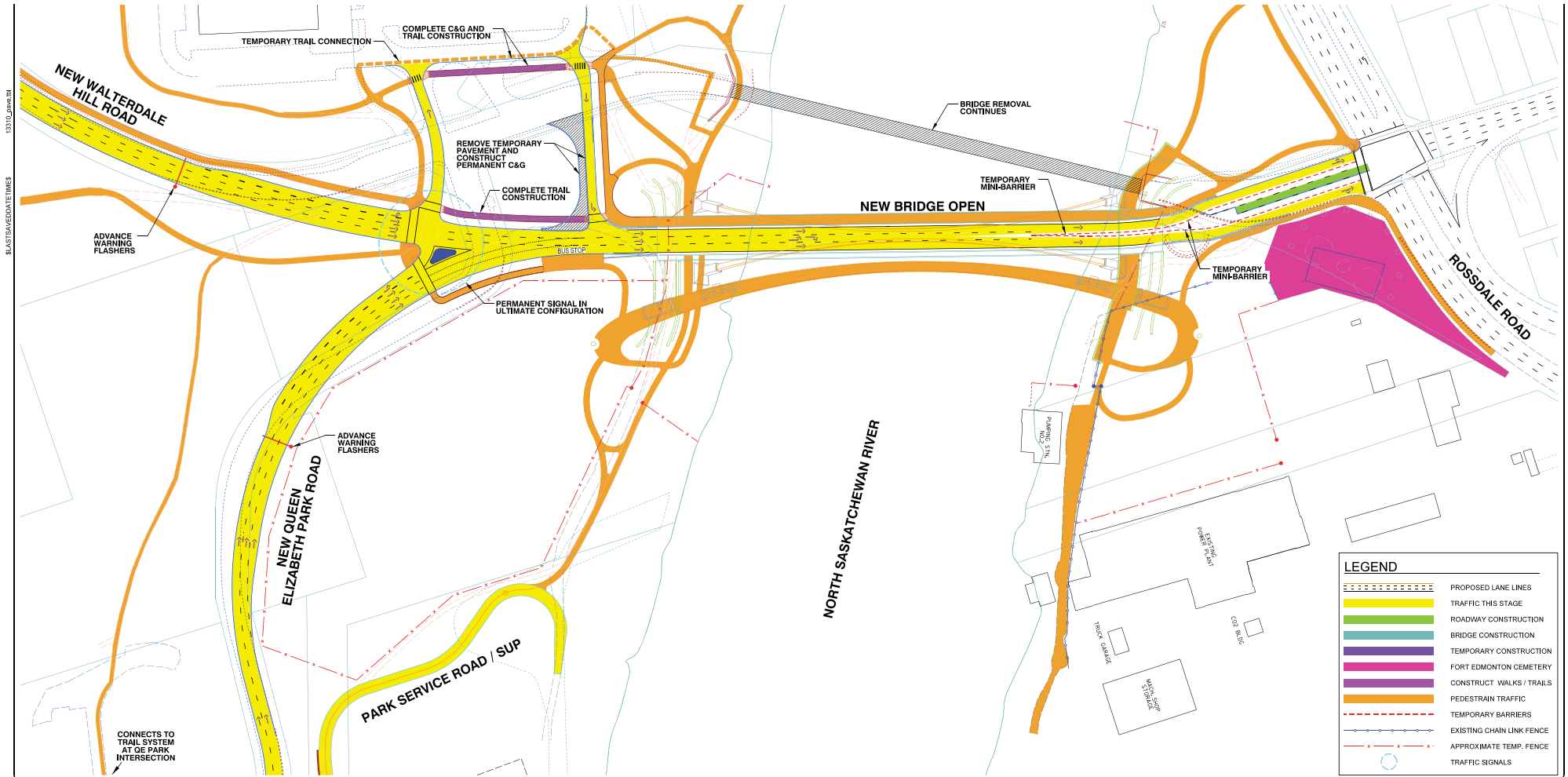


PROPOSED TRAFFIC ACCESS AND DETOURS

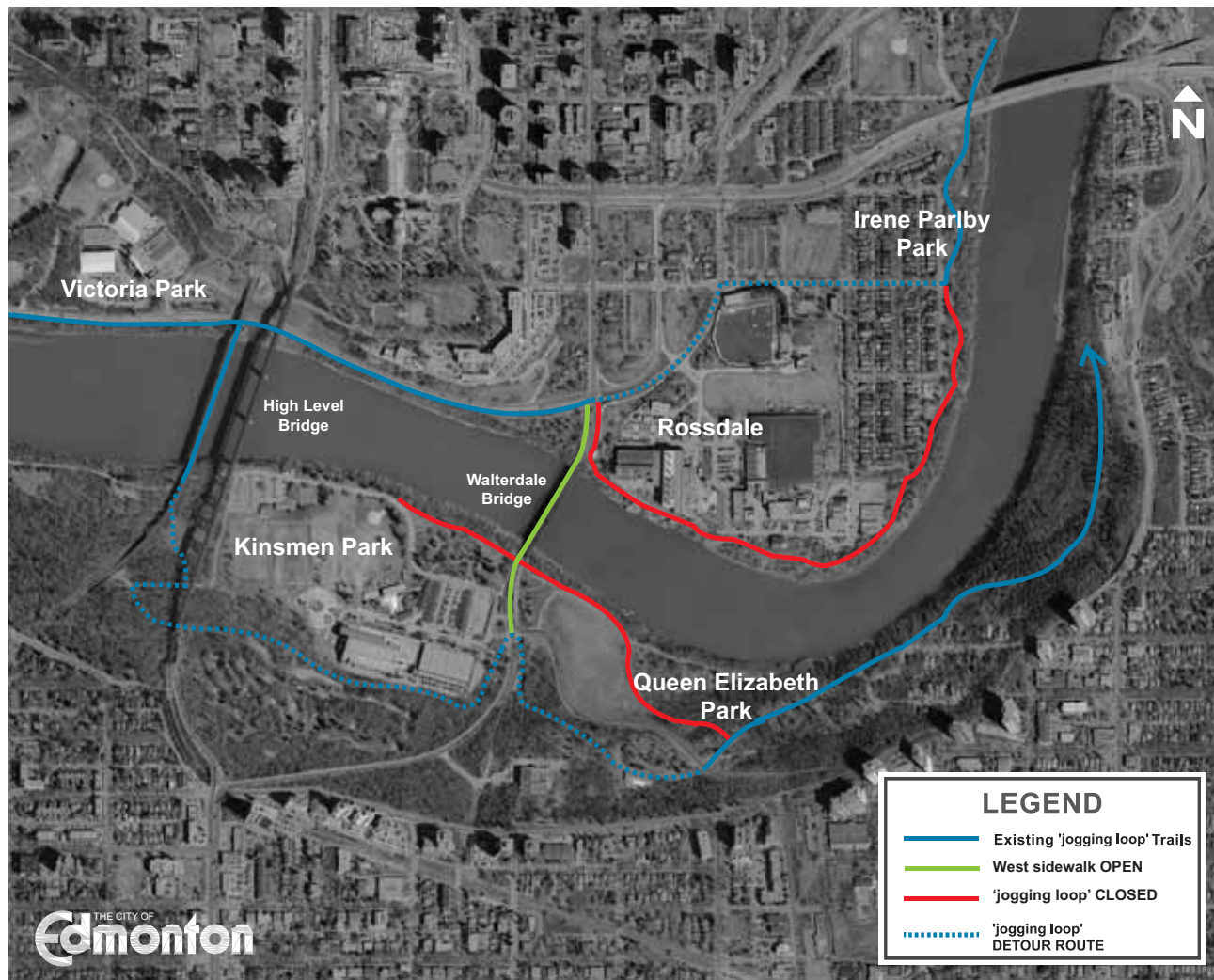


Stage 5: New bridge open to traffic and removal of old bridge.

PROPOSED TRAFFIC ACCESS AND DETOURS

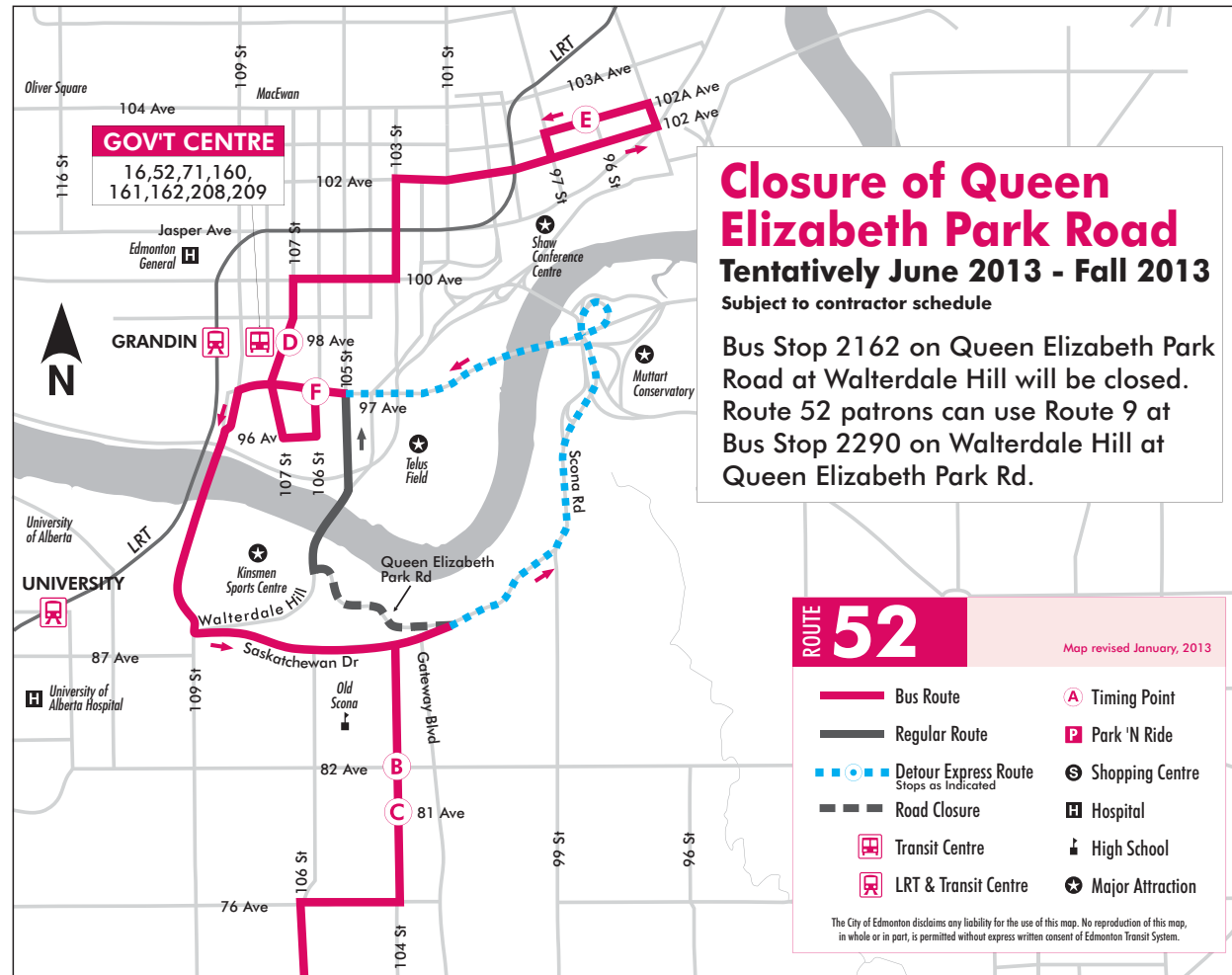


TEMPORARY TRAIL DETOURS



For the safety of the public and trail users, some of the River Valley trails in the project area have been temporarily closed to accommodate construction of the new bridge.

PUBLIC TRANSIT DETOUR PLAN

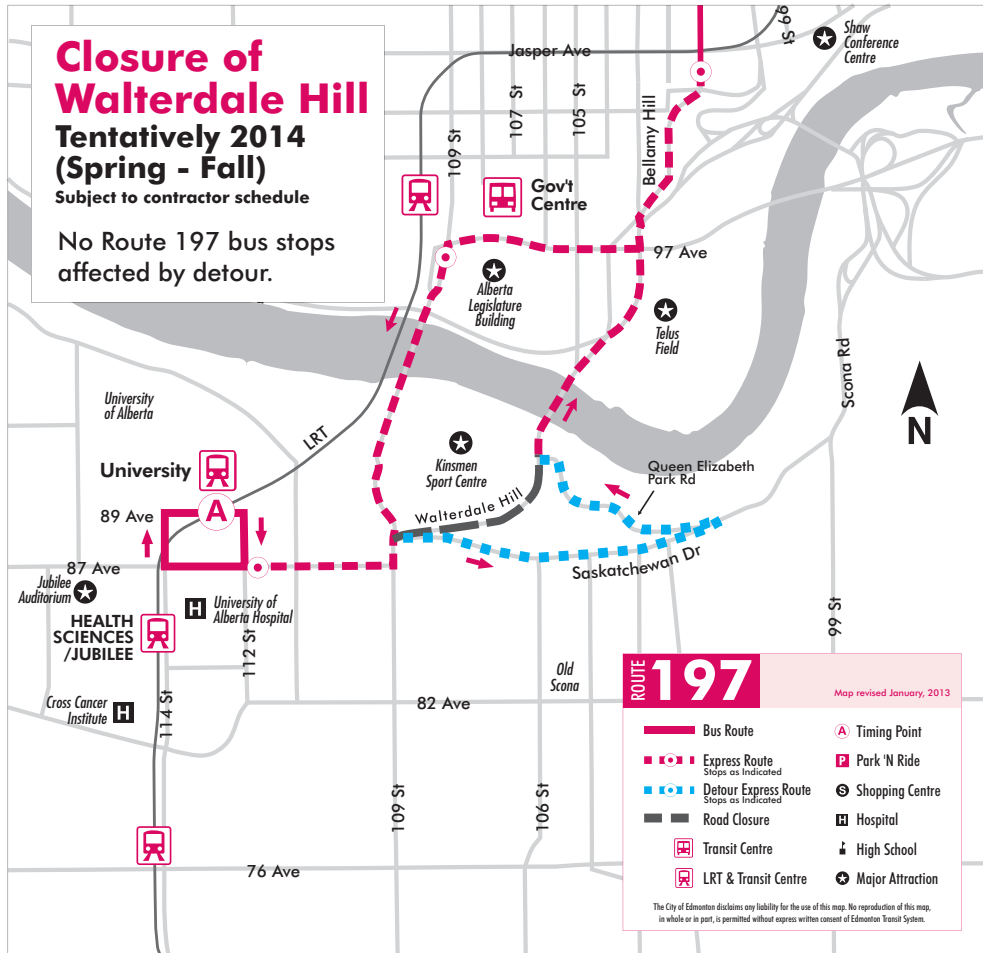


PUBLIC TRANSIT DETOUR PLAN

Closure of Walterdale Hill Tentatively 2014 (Spring - Fall)

Subject to contractor schedule

No Route 197 bus stops
affected by detour.



Closure of Walterdale Hill Tentatively 2014 (Spring - Fall)

Subject to contractor schedule

Bus Stop 2290 on Walterdale Hill at Queen Elizabeth Park Road will be temporarily relocated near its current location.

