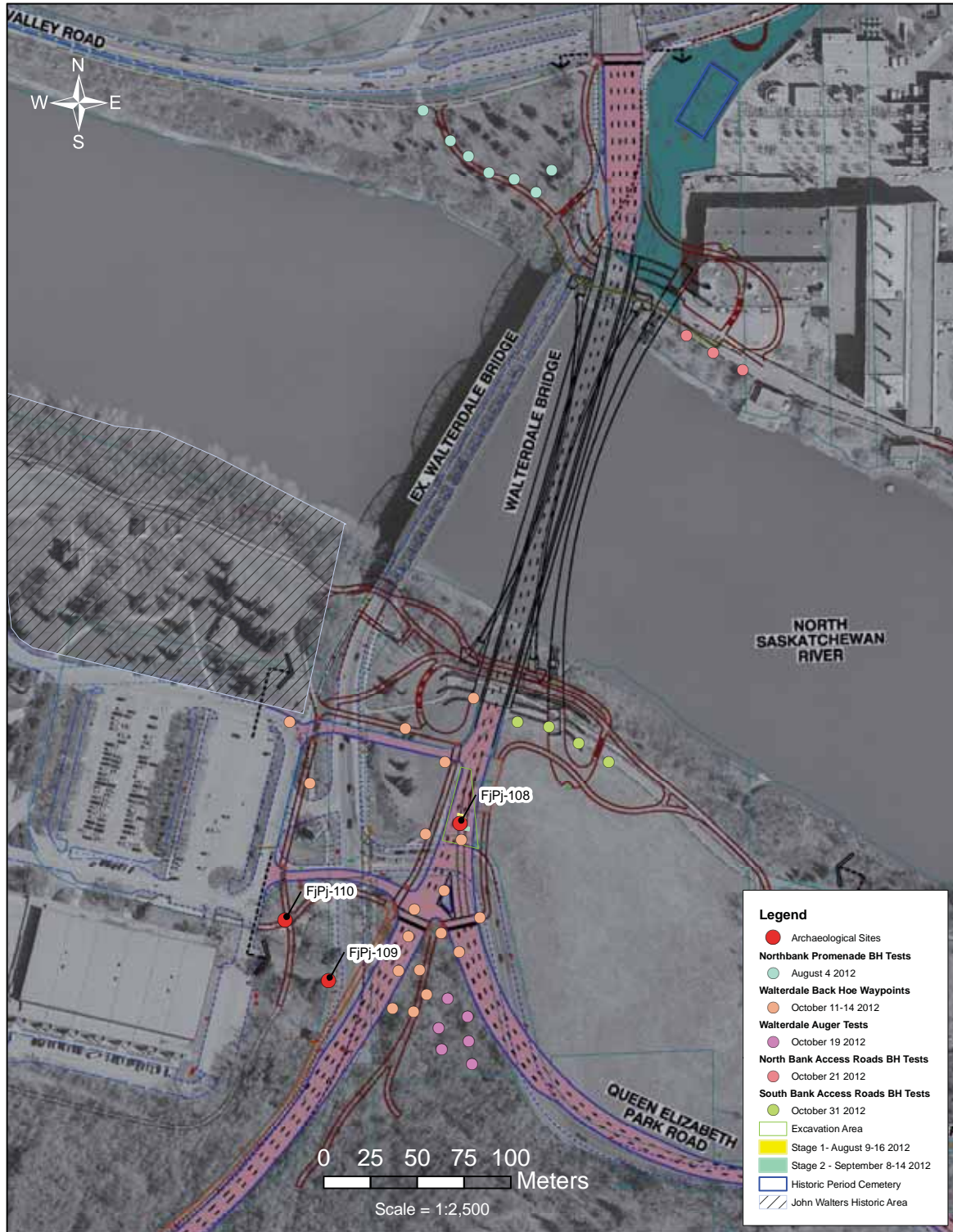


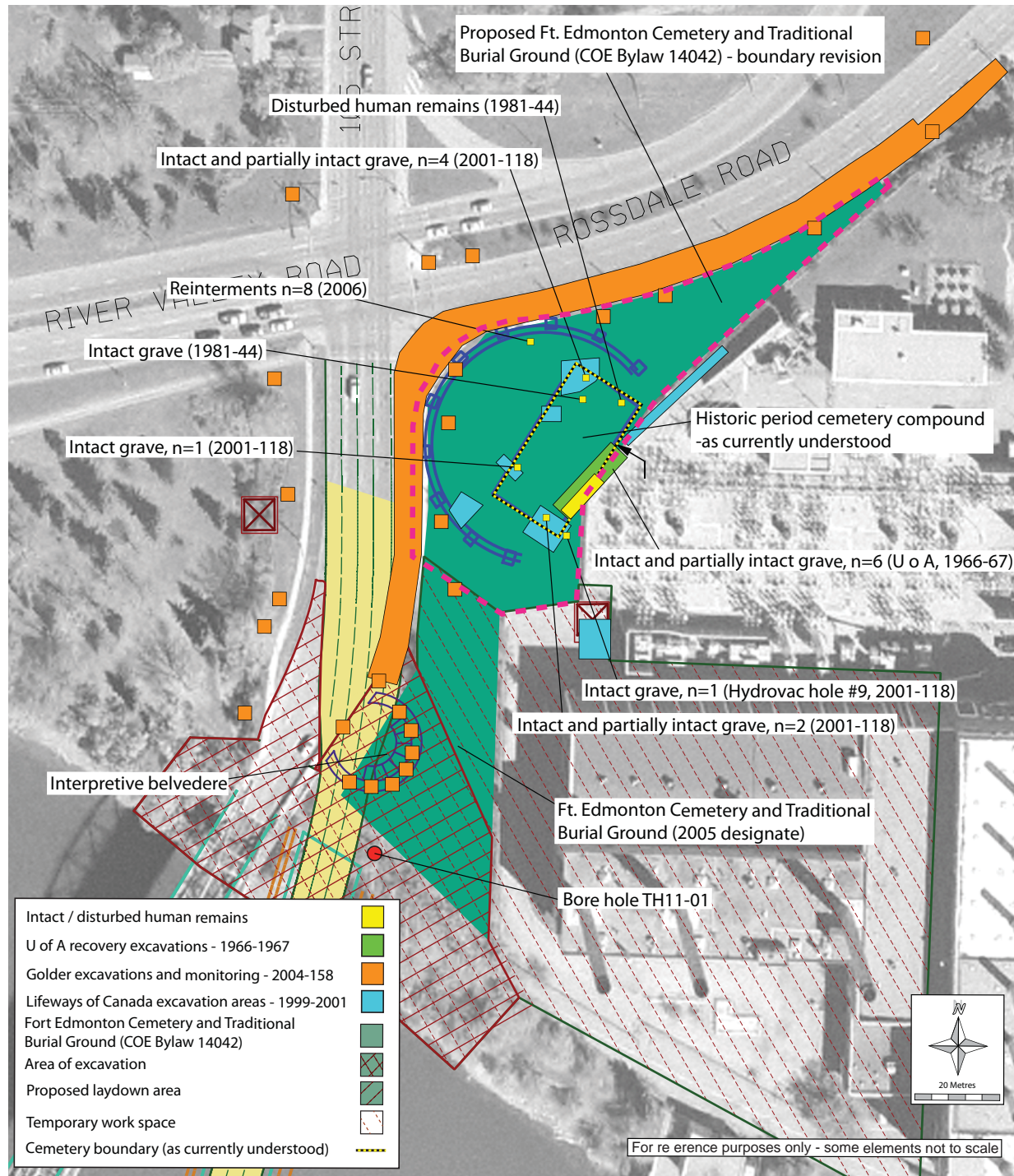
# HISTORICAL AND CULTURAL CONSIDERATIONS

## Archaeological Work Sites



# HISTORICAL AND CULTURAL CONSIDERATIONS

## Known Historical Information





# HISTORICAL AND CULTURAL CONSIDERATIONS

Pre-construction archaeological investigation and excavations:

- Test pitting on south bank – Oct 2011.
- Test pitting on north bank – Oct 2012.
- Continued testing where required.
- Mitigative investigation on south side of the river. Controlled excavation Aug/Sept 2012 1,500 year-old camp site found.



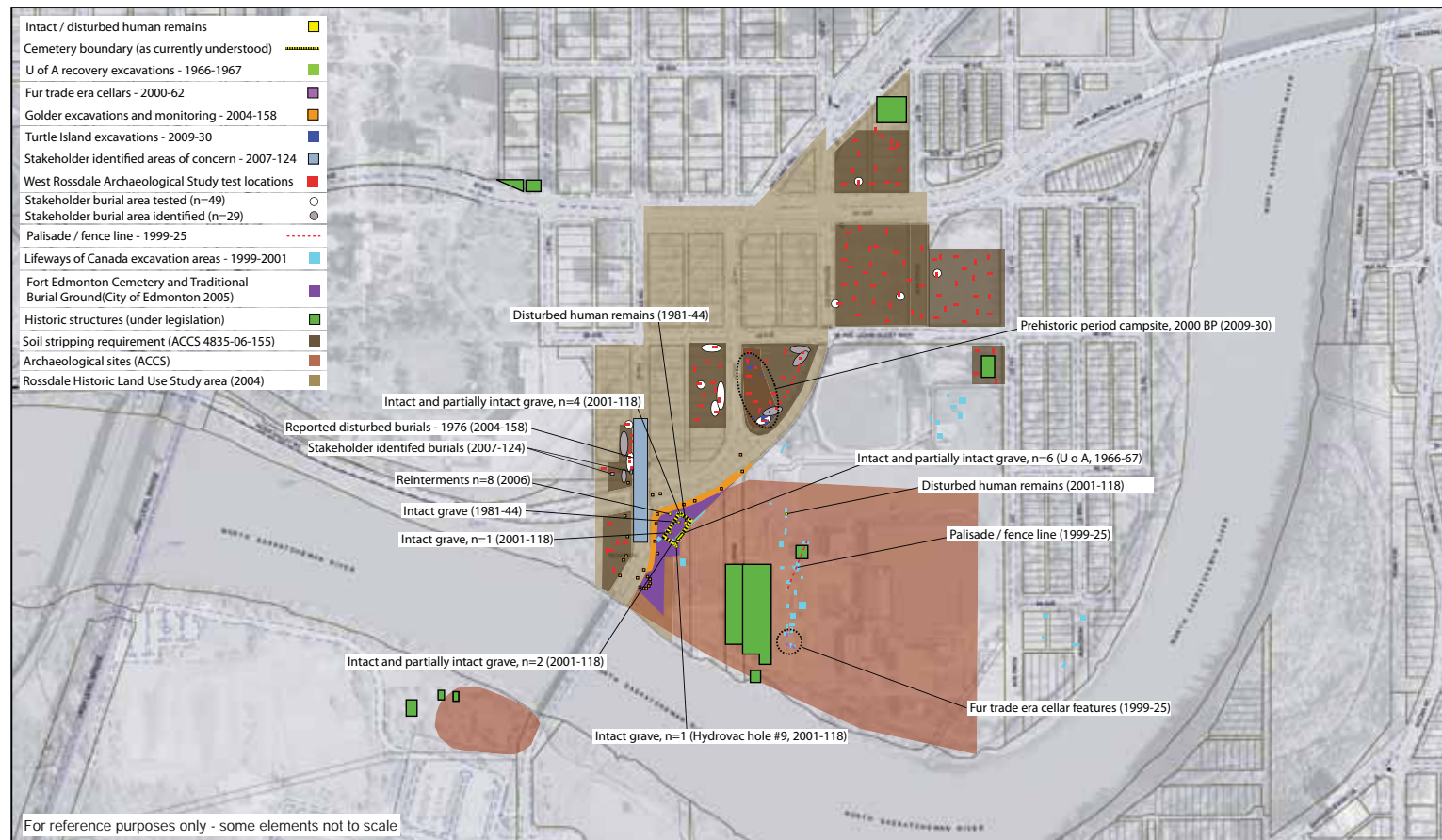
# HISTORICAL AND CULTURAL CONSIDERATIONS

Continuing archaeological work:

- Construction monitoring for historical resources.
- Comprehensive cultural resource management plan: procedure for discovery of historic resources or human remains.
- All bridge related excavation and in-river work will be monitored by representatives of interested Aboriginal communities to ensure transparency.
- Aboriginal communities have been invited to conduct ceremony prior to construction.

# HISTORICAL AND CULTURAL CONSIDERATIONS

## Historical Resources Impact Summary



# ABORIGINAL ENGAGEMENT AND CONSULTATION

- Alberta Culture required consultation with 17 First Nations communities throughout Alberta. The City of Edmonton added four more to include Metis and other Aboriginal communities.
- The formal consultation process was carried out from May 20, 2010 through to November 7, 2012 and included 821 individual communications. Communication has continued with Aboriginal communities and will be ongoing throughout construction.
- Site tours and community information sessions were included as part of this process.
- Accommodation measures are ongoing and include ceremony and monitoring of construction activities by community members.
- The City of Edmonton has requested that Alberta Culture notify interested Aboriginal communities in the event historical resources are identified during construction and that these communities will continue to be consulted during future projects in the area.