

QUEEN ELIZABETH II HIGHWAY/41 AVENUE SW INTERCHANGE PROJECT

CONSTRUCTION UPDATE

(September 2015)

In 2013, the City of Edmonton began construction of a grade-separated interchange at the junction of Queen Elizabeth II Highway and 41 Avenue SW. This partial cloverleaf interchange will convert 41 Avenue SW into a continuous corridor with full access to and from QEII Highway.

The project is jointly funded by the City of Edmonton, Alberta Transportation and the Federal Government through the Asia-Pacific Gateway and Corridor Initiative (APGCI). The interchange will facilitate development in and around Edmonton, as well as travel within Alberta and inter-provincially.

ROADS

Paving is 80 per cent complete on the new northbound and southbound lanes of QEII Highway. Most of the associated street lighting and drainage work is also nearing completion. Traffic on QEII Highway has been flowing on these new alignments since fall 2014, passing underneath the new 41 Avenue SW overpass. Embankments are complete, and paving is now underway on the ramps for Gateway Park and 41 Avenue SW exiting and entering the highway.

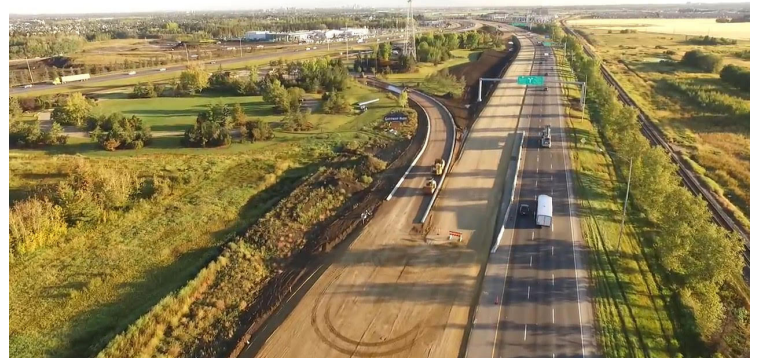
Paving on 41 Avenue SW is done between Blackmud Creek and QEII Highway, with the remaining length scheduled to be completed this fall.

BRIDGES

Construction on the 41 Avenue SW over QEII Highway Bridge started in fall 2013. Work is now complete, with the paving done in July 2015. A realignment of Blackmud Creek was completed in 2014, and work on that bridge is nearly finished. The deck was poured in April 2015, and it has since been waterproofed and paved.



Project overview



Looking north along the new interchange



Looking west at 41 Avenue SW



QUEEN ELIZABETH II HIGHWAY/41 AVENUE SW INTERCHANGE PROJECT

Work on the bridges carrying 41 Avenue SW over the CP Rail tracks began in early 2014, and now all concrete work is complete and waterproofing work is in progress.

The retaining walls running along the CP Rail tracks at these two bridges are also nearly complete.

DRAINAGE

The majority of drainage work is now complete, including ditch culvert installations for the new QEII Highway lanes, excavation of storm water management ponds west of the highway, manhole and catch basin installation, and installation of over one kilometer of concrete storm sewer beneath the highway, the rail tracks and several oil pipelines.

Remaining work scheduled for autumn 2015 includes installation of flow control structures and erosion protection for the storm water management ponds, and commissioning of the storm sewer system to facilitate interchange drainage.

UTILITIES

Oil pipelines adjacent to the CPR tracks on the east side of QEII Highway were relocated in the fall of 2013 to facilitate wall and embankment construction across that area. Water, electric transmission, telephone, gas transmission and gas distribution utilities were also relocated within the highway corridor to accommodate the new interchange and highway realignment.

Installation of a permanent telephone line is the only remaining utility relocation work on the project.

CONSTRUCTION TIMELINE

2013	<p><u>Completed</u></p> <ul style="list-style-type: none"> • Closed local 30 Ave SW, 41 Ave SW and RR 245B access. • Earthwork for new QEII Highway southbound, foundation work for 41 Ave SW over QEII Highway Bridge, and installation of storm sewer started. • Majority of utility relocations complete.
2014	<p><u>Completed</u></p> <ul style="list-style-type: none"> • Blackmud Creek realignment. • 8 Street service road and 41 Ave SW east of QEII Highway closed. • New northbound and southbound QEII Highway lanes paved and opened to traffic. • Installed majority of storm sewer facilities.
2015	<p><u>Completed</u></p> <ul style="list-style-type: none"> • Completion of outstanding work on the four bridges. • Completion of work on 41 Ave SW. • Interchange open to public traffic. <p><u>Ongoing/Upcoming</u></p> <ul style="list-style-type: none"> • Completion of 41 Ave SW over QEII Highway Bridge, Blackmud Creek Bridge, 41 Ave SW CPR Ramp Bridge and 41 Ave SW CPR Main Bridge. • Grading, landscaping, and installation of flow control devices for the storm water management ponds west of QEII Highway. • Completing road work for Gateway Park. • Widening sections along QEII Highway and on 41 Ave SW. • Opening interchange to traffic.