



Building Great Neighbourhoods

Montrose





We are here today to...

- **Explain** how the City is investing in improving your neighbourhood.
- **Show** you the preliminary road designs for your neighbourhood, including streetlight placement.
- **Ask** you to provide local knowledge in reviewing the design.
- **Highlight** the local improvement process and how it works.



Building Great Neighbourhoods

Building Great Neighbourhoods is a City initiative that coordinates three infrastructure investment programs to renew and improve Edmonton neighbourhoods.

Building Great Neighbourhoods		
Drainage Neighbourhood Renewal Program	Neighbourhood Renewal Program	Great Neighbourhoods Capital Program



In Your Neighbourhood

The City of Edmonton is:

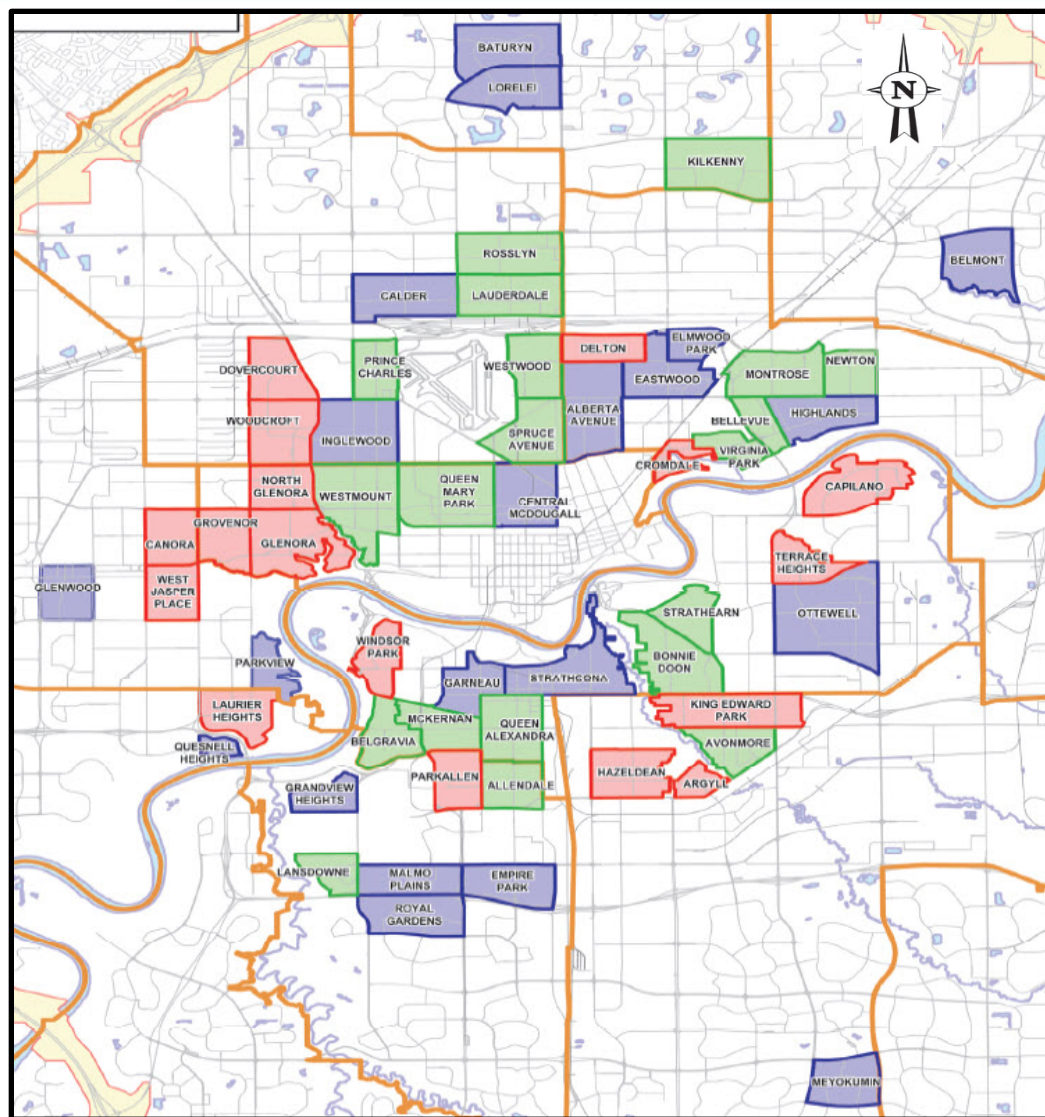
- Renewing and replacing sewers
- Coordinating utility repairs (EPCOR and ATCO)
- Reconstructing roads, curbs and sidewalks on City-owned property
- Replacing streetlights
- Working with residents to improve pedestrian and cycling accessibility
- Adding to your neighbourhood's livability



A Unique Program

- Building Great Neighbourhoods is a long-term, planned, integrated approach to improve and replace essential infrastructure in Edmonton's mature neighbourhoods.
- This advances several long-term City goals:
 - Improve Edmonton's livability
 - Promote active transportation (walking and cycling)
 - Preserve and sustain the environment

Neighbourhood Reconstructions



2012-14:	17
2015-18:	20
2019-22:	21
Total:	58

Road Reconstruction



BEFORE



AFTER



Neighbourhood Renewal

[Building Great Neighbourhoods Video](#)

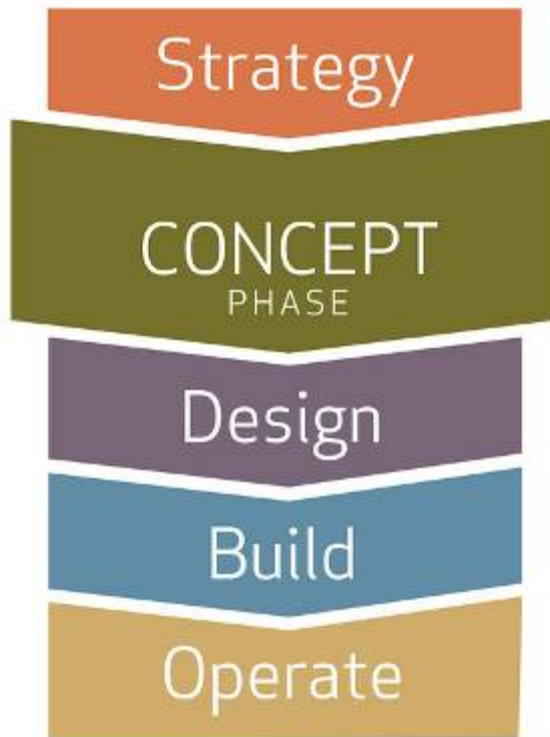
Meeting 1 - Concept *with Community League*

Community League Meeting #1:

- October 26, 2015

Discussion:

- Any community-led projects, initiatives or suggestions that could be opportunities for neighbourhood capital investments to improve livability
- An overview of the local improvement process for sidewalks and decorative street lighting and the role of the Community League
- Drainage has initiated the inspection and renewal of the sewer system



Meeting 2 (TODAY) - Design



Designs informed by:

- Conversation with the Community League
- Initial assessments of the neighbourhood
- City design standards and policies

Feedback

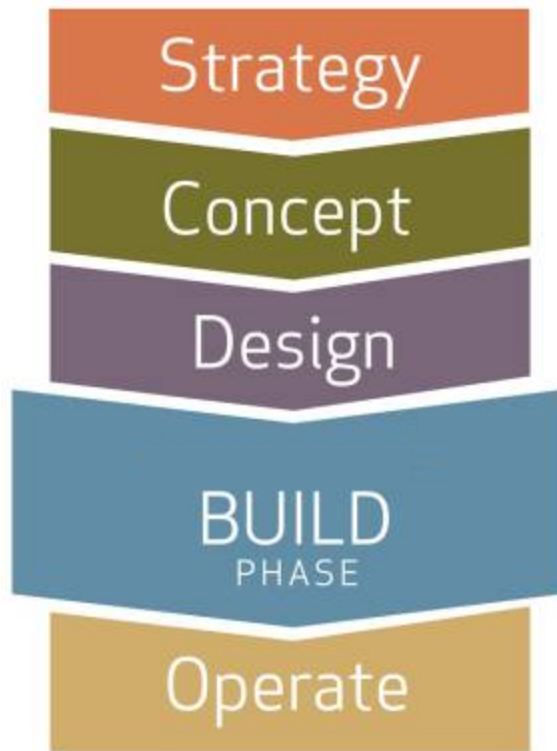


We ask that you look at these designs and use your knowledge of the neighbourhood to advise us if there are missing design elements such as:

- sidewalk links
- bicycle facilities
- traffic concerns
- other suggestions to enhance livability

This will help us with our final design.

Meeting 3 – Construction Plans & Local Improvement Information



Following the design meeting, comments are incorporated if appropriate and the design is finalized. The final plan is presented to the community and the local improvement process is described in more detail.



Montrose





MONTROSE DRAINAGE NEIGHBOURHOOD RENEWAL



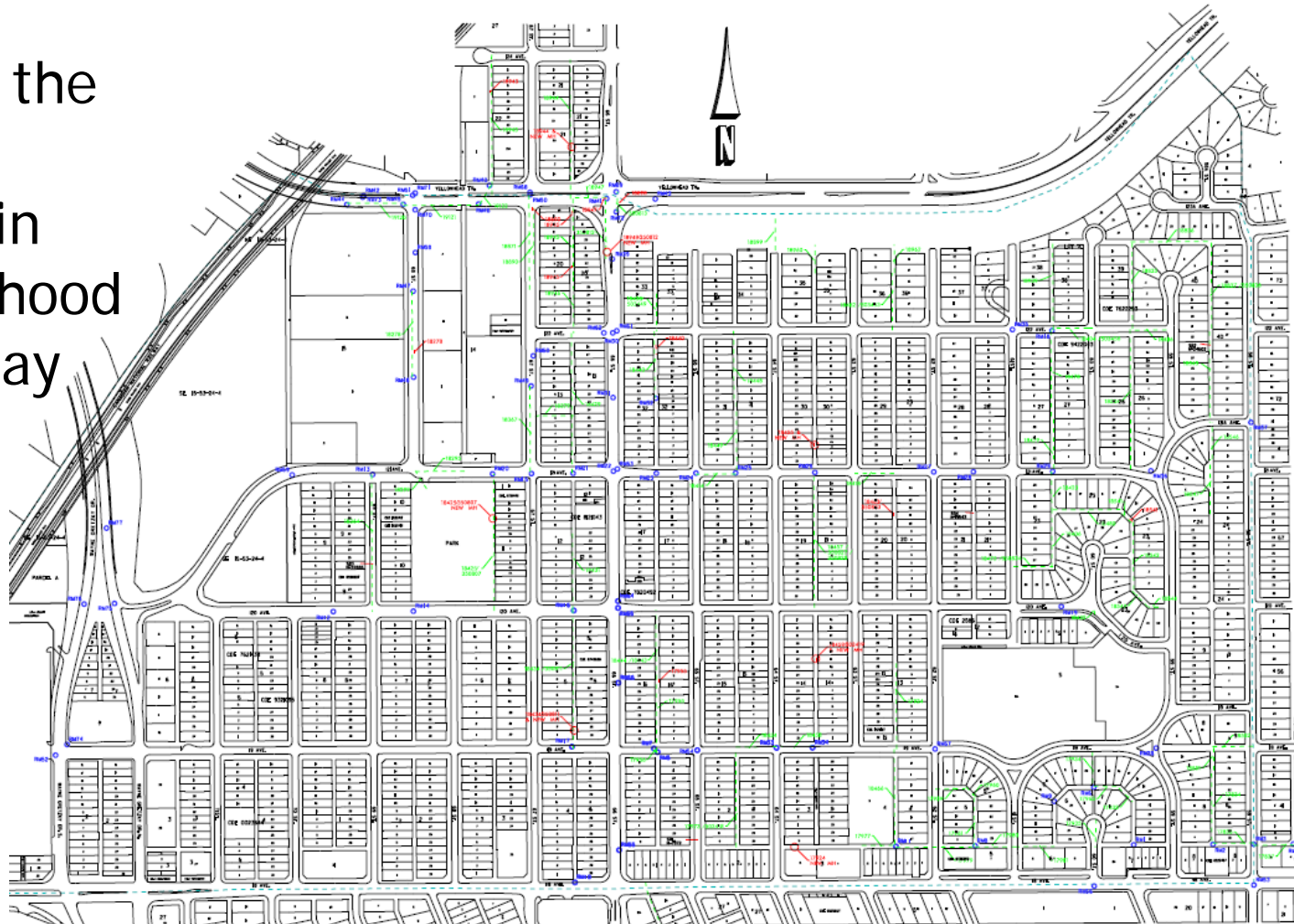
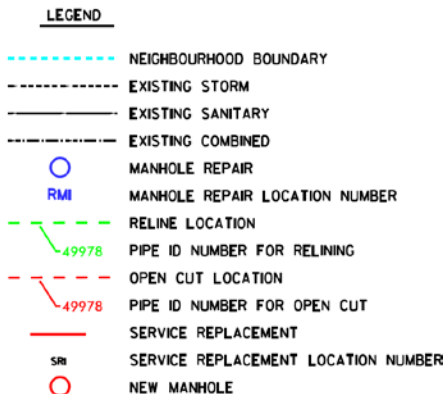
Drainage Neighbourhood Renewal

Drainage Services has been in your neighbourhood renewing and replacing storm and sanitary sewers.

- **Relining:** involves 'cured in-place' pipe material, resulting in minimal disruption to pavement
- **Open cut:** requires significant disruption to pavement

Drainage Neighbourhood Renewal

A map showing the locations of drainage work in your neighbourhood will be on display following the presentation.





MONTROSE NEIGHBOURHOOD RENEWAL PROGRAM

Condition & Reconstruction Scope

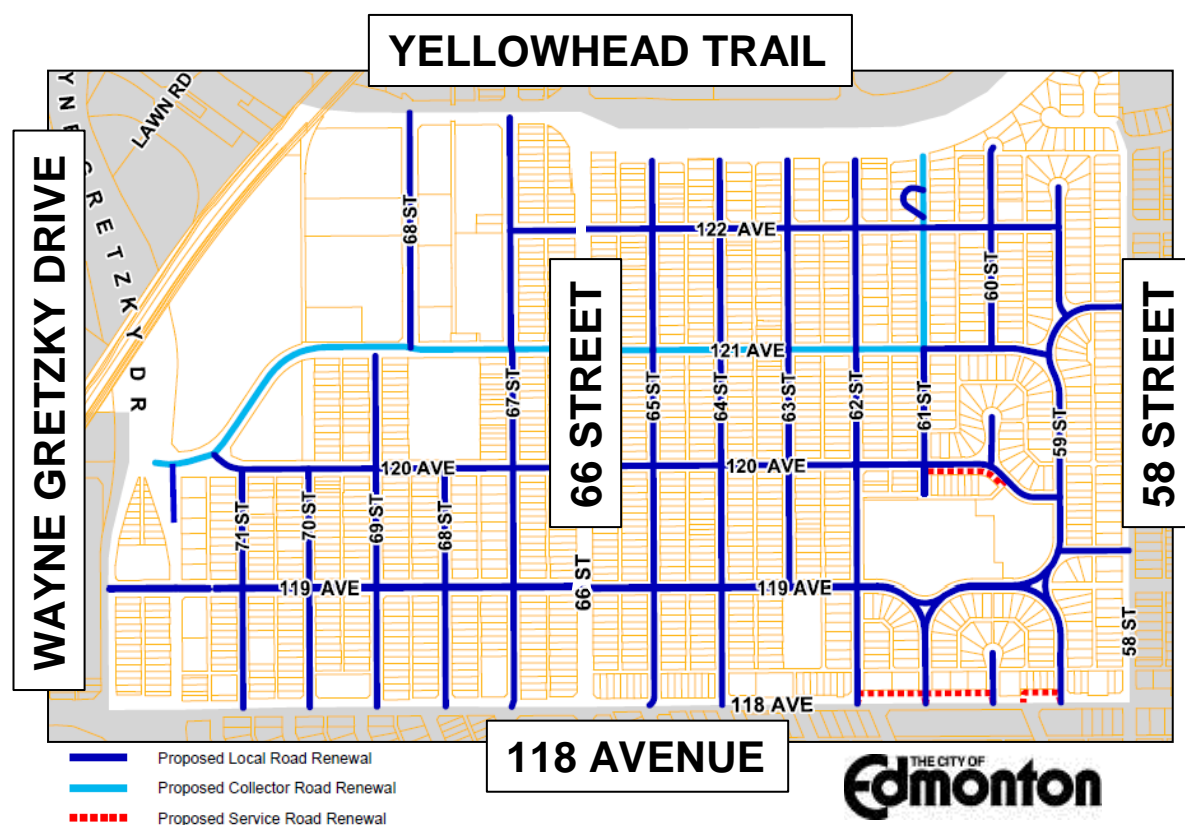
Conceptual Budget:

\$26.5 Million

- Includes:
 - Replacing pavement, sidewalks, curb and gutter
 - Upgrading streetlights
- Does NOT include:
 - Wayne Gretzky Dr, Yellowhead Tr, 66 St, 58 St, 118 Ave
 - Underground utility work or alleys

Surface Infrastructure Conditions:

- Pavement: Poor
- Sidewalk: Fair
- Curb and gutter: Fair



Design Considerations

Curb Type

- Rolled face curb
- Straight face curb



Accessibility & Enhancements

- Adding curb ramps, improving curb radius, and improving the overall operation



Design Considerations



BEFORE



AFTER

Design Considerations

Active Modes

- **Sidewalks:** In residential neighbourhoods, ensure accessibility to all bus stops and provide a sidewalk on at least one side of the street
- **Bicycle routes:** Review the Bicycle Transportation Plan to implement bike lanes, shared-use lanes and shared-use pathways where applicable



Curb Type Design



Various factors are considered for curb type selection:

- Recommended pavement structure design
- Surface drainage along roadways
- Adjacent lot grades
- Frequency of driveways in the neighbourhood
- Size and number of trees in proximity to the sidewalks and curb and gutters

Increased Accessibility

Install curb ramps at:

- All intersections



Increased Accessibility

Improve loading zone at:

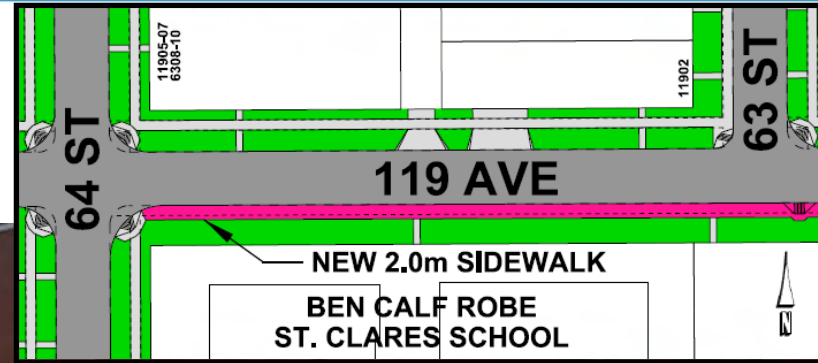
- Montrose School



Increased Accessibility

Improve loading zone at:

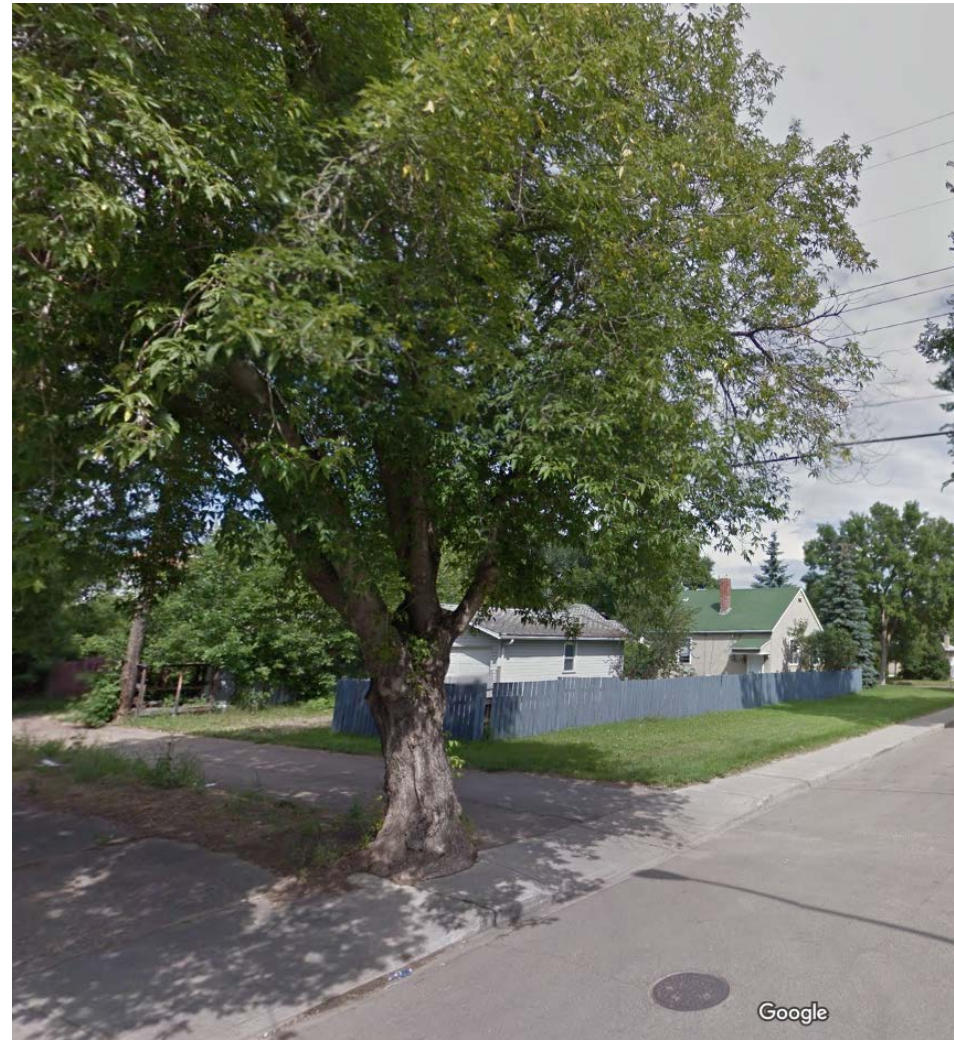
- Ben Calf Robe-Saint Clare School



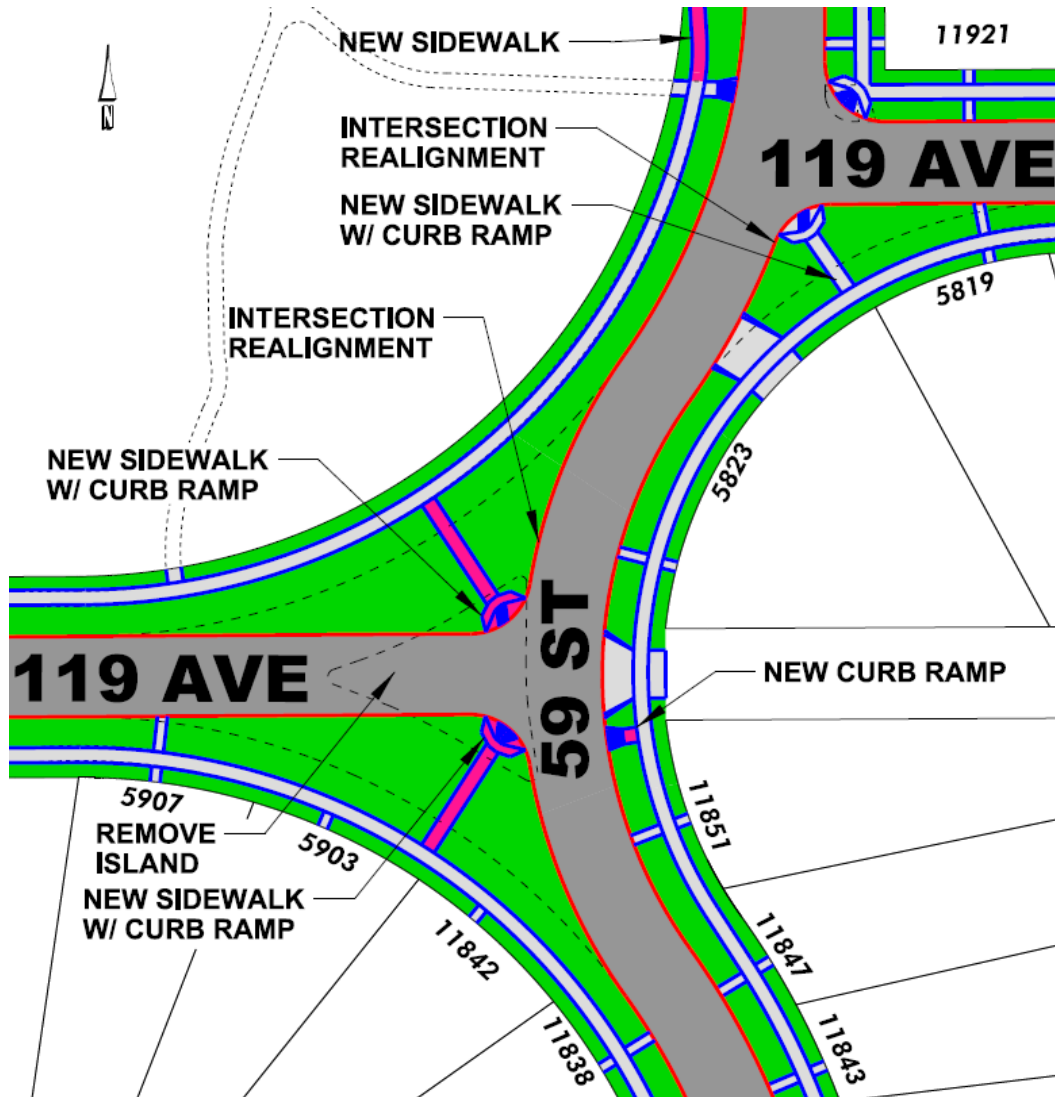
Increased Accessibility

Proposed tree removal at:

- 119 Ave (west of 68 St)

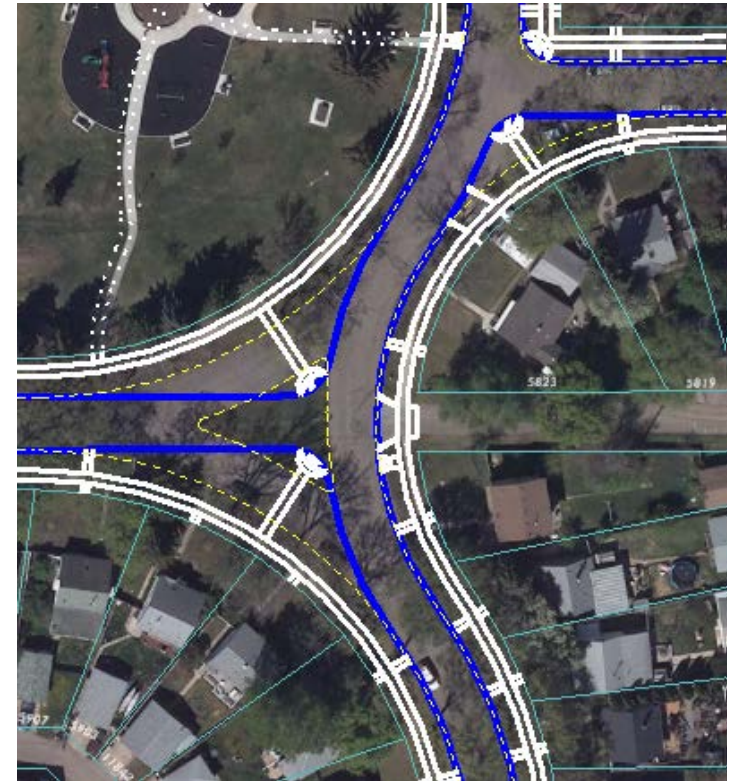


Intersection Enhancement



Realign intersections at:

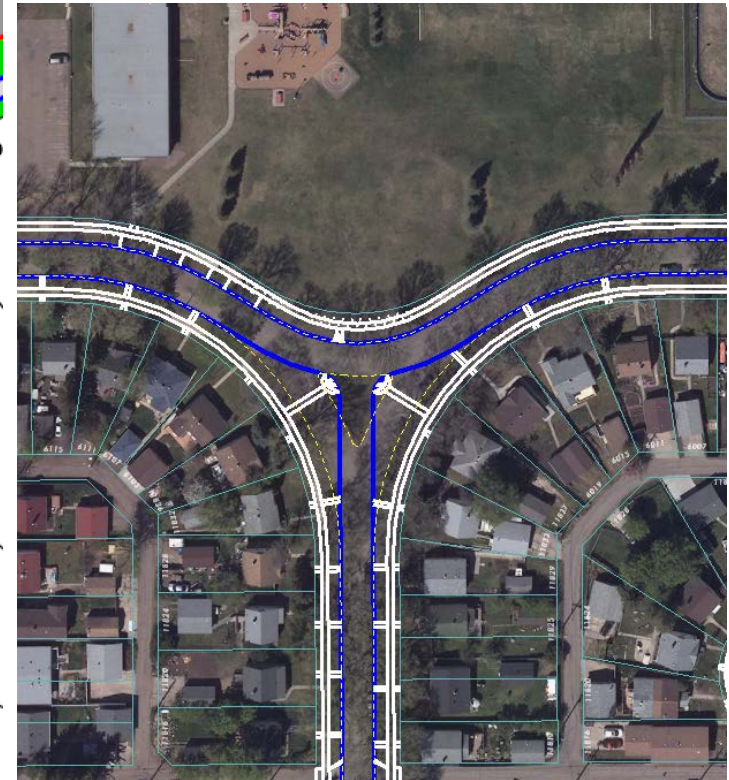
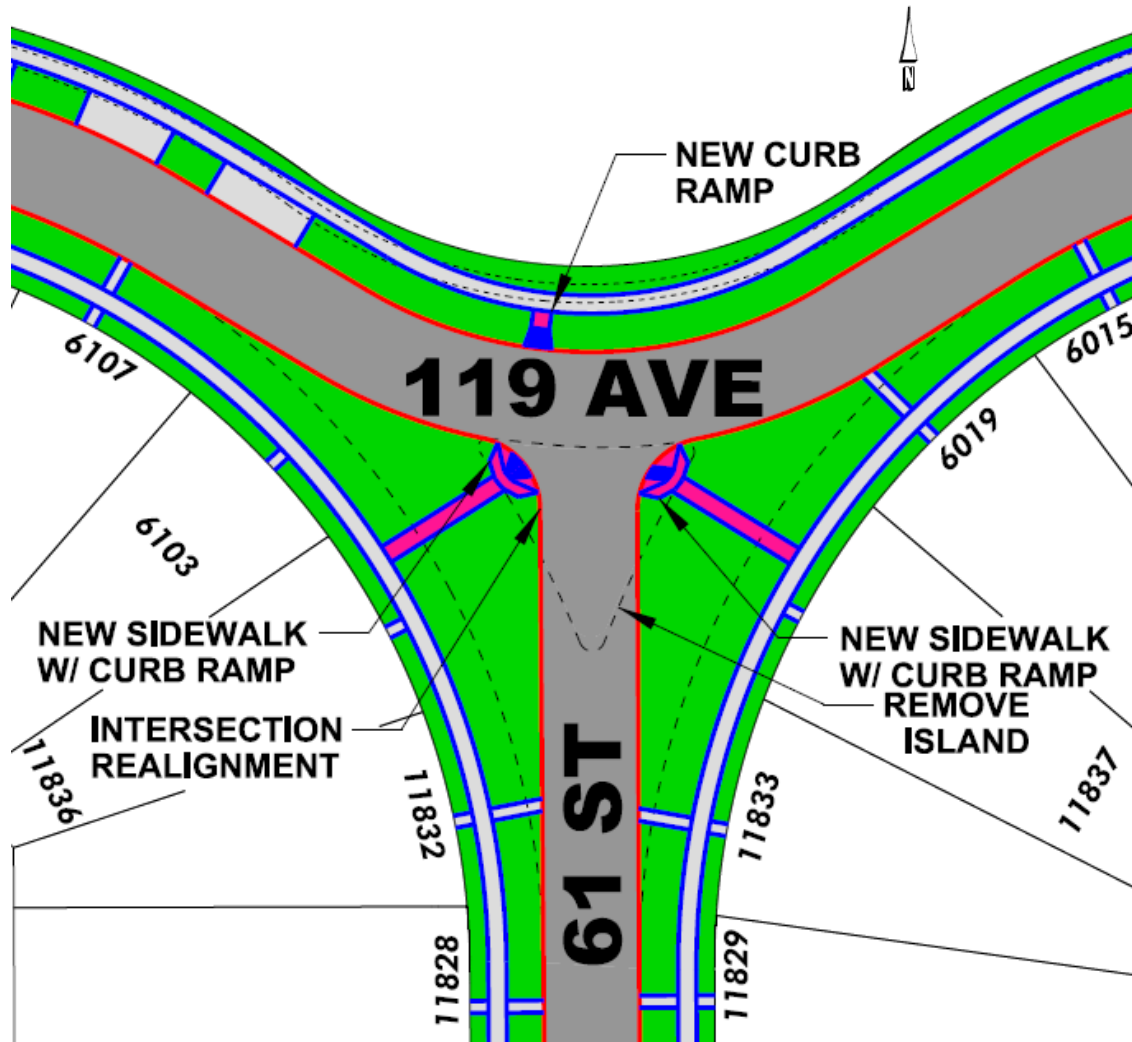
- 119 Ave & 59 St



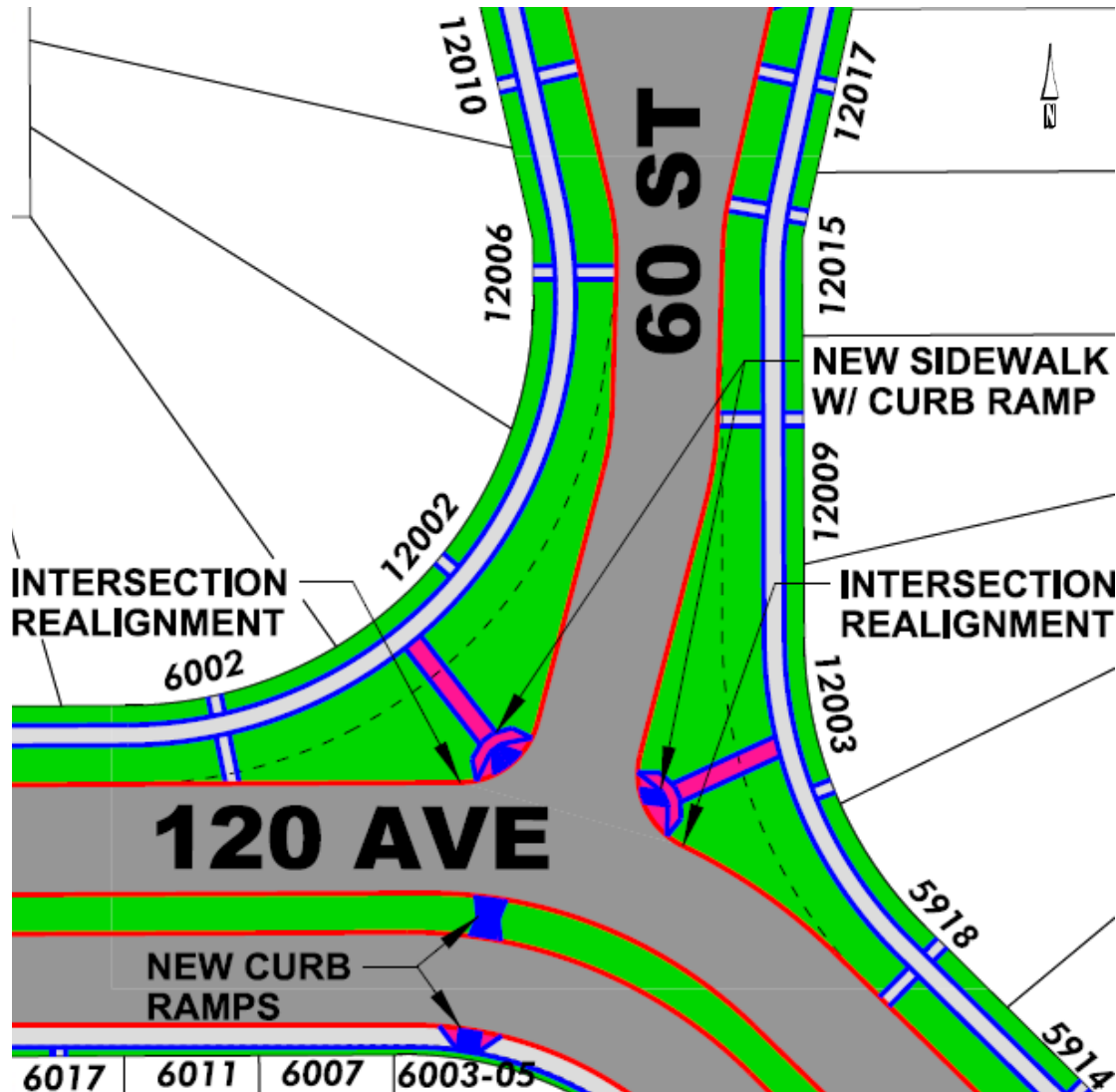
Intersection Enhancement

Realign intersection at:

- 119 Ave & 61 St

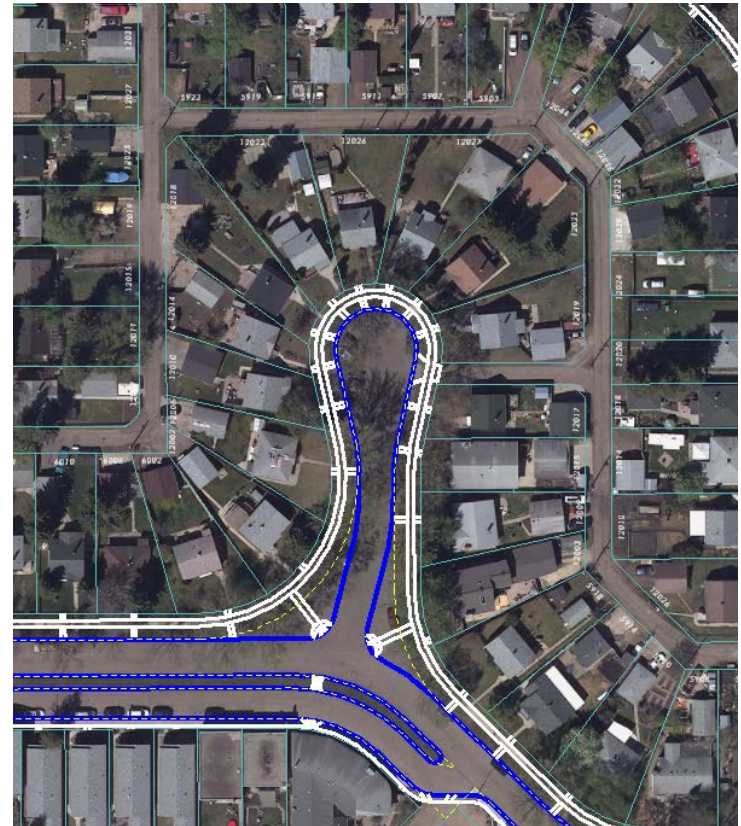


Intersection Enhancement



Realign intersection at:

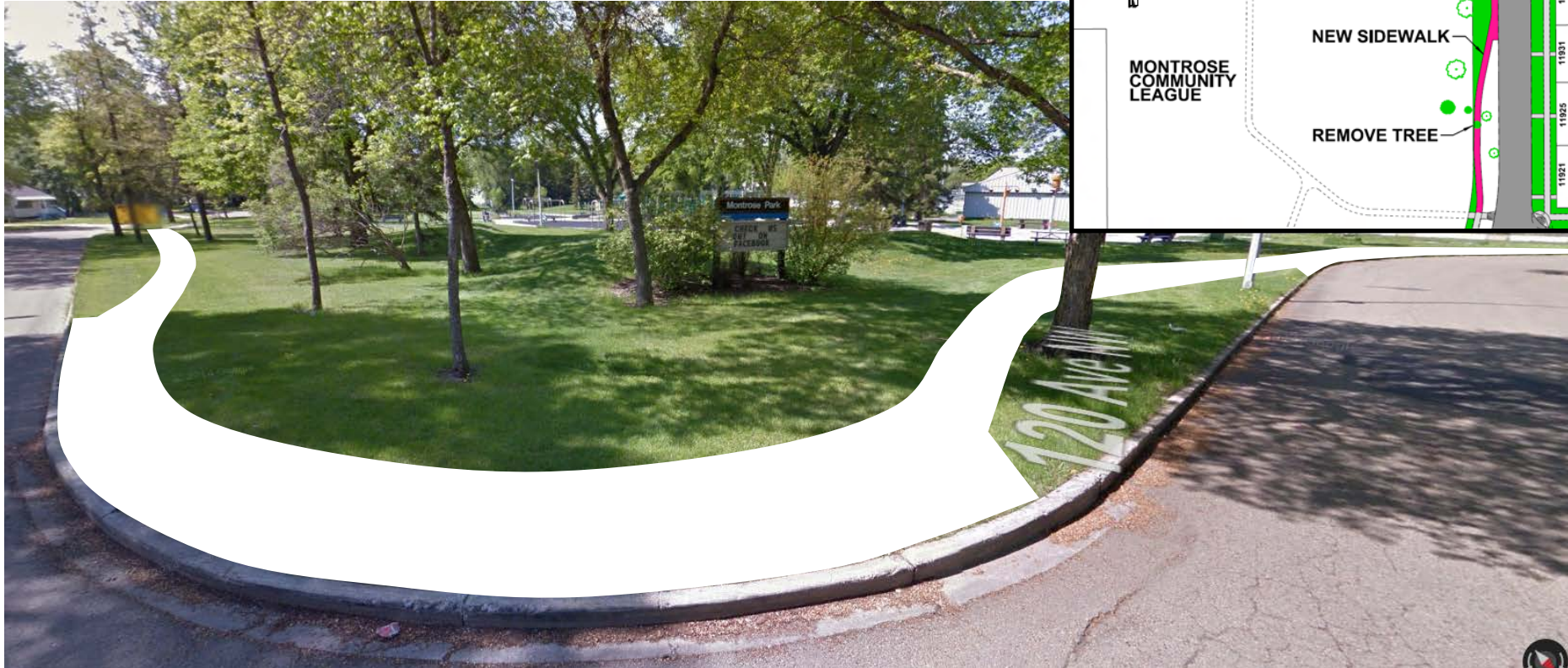
- 120 Ave & 60 St



New Sidewalk

Install new sidewalk at:

- 120 Ave & 59 St (Montrose Park)



New Sidewalk

Install new sidewalk at:

- 62 St (north of 122 Ave)



New Sidewalk

Install new sidewalk at:

- 64 St (north of 122 Ave)



New Sidewalk

Install new sidewalk at:

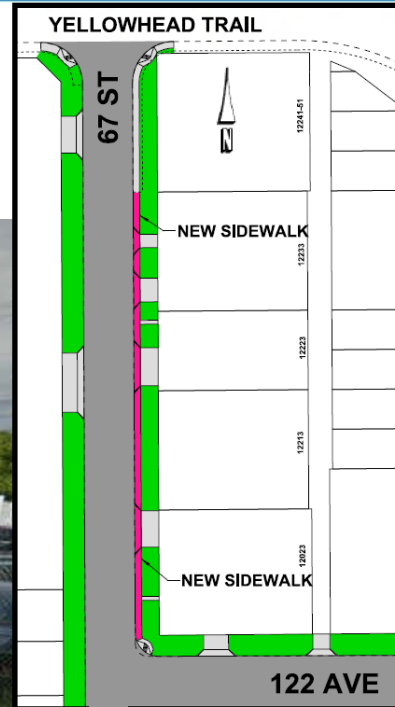
- 68 St (north of 121 Ave)



New Sidewalk

Install new sidewalk at:

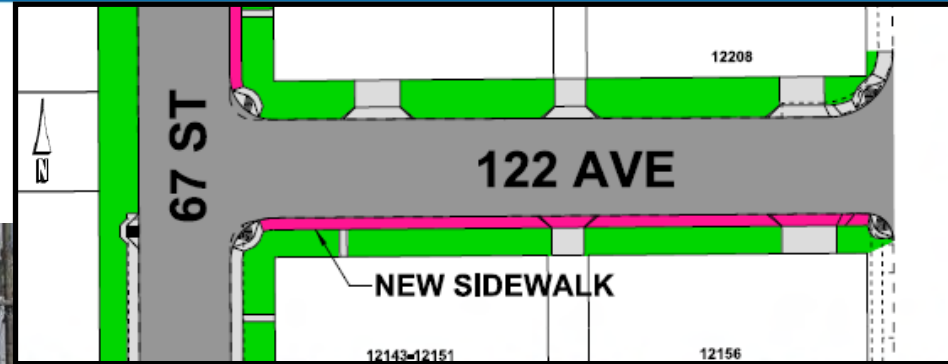
- 67 St (north of 122 Ave)



New Sidewalk

Install new sidewalk at:

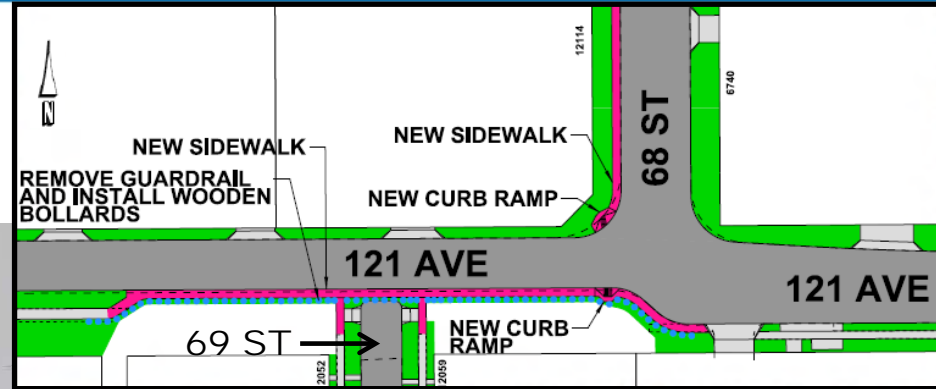
- 122 Ave (east of 67 St)



New Sidewalk

Install new sidewalk at:

- 121 Ave (west of 68 St)

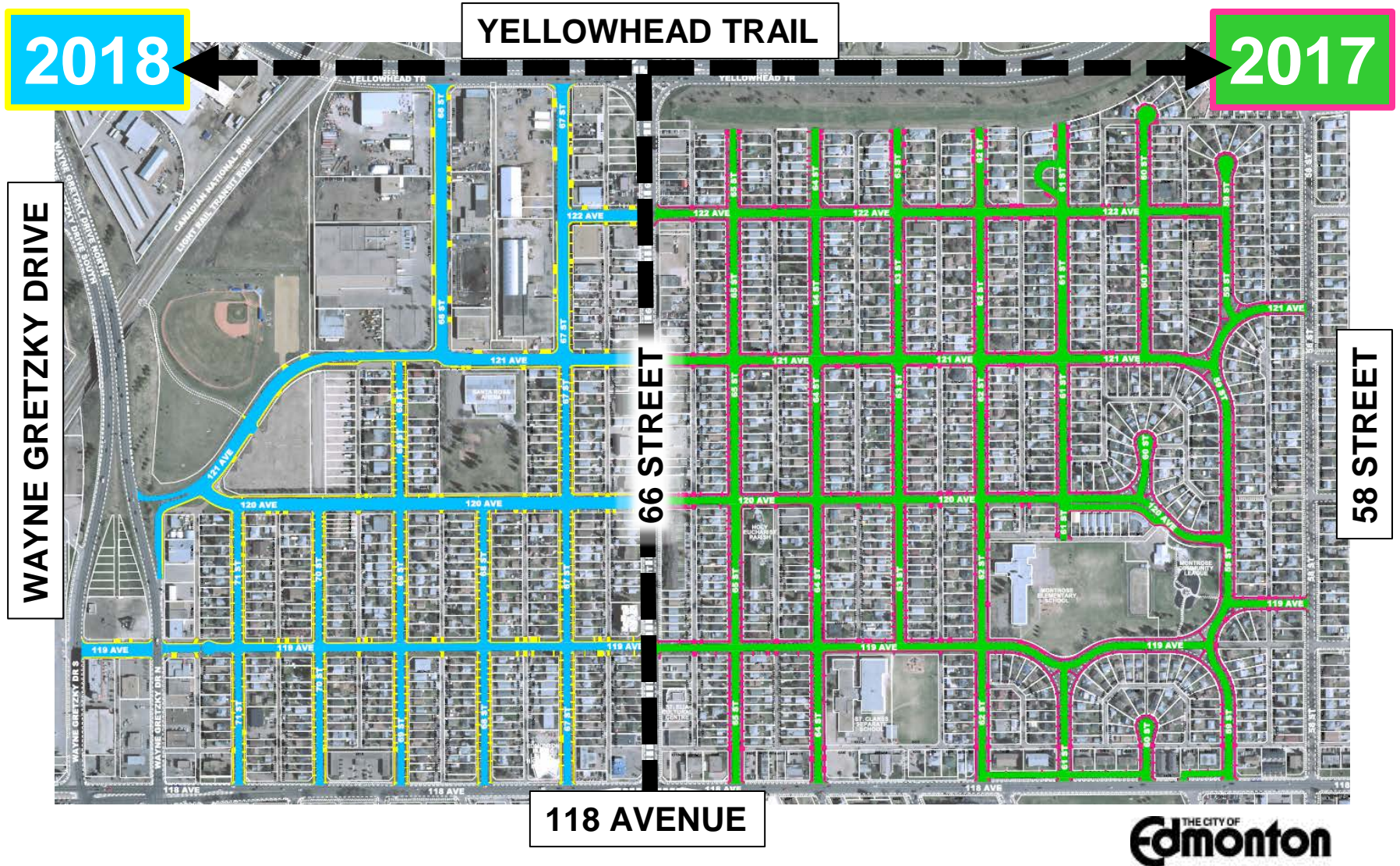




Construction Staging

- Construction is staged over two years (2017-18)
- Ultimate staging is dependent on weather conditions, coordination with utilities, and unforeseen design and construction issues
- Construction activities around schools are scheduled during the summer months to create minimal disturbance for students

Construction Staging



Streetlight Design Standards

Neighbourhood streetlight system:

- Upgraded to energy efficient LED lighting, the new City standard for streetlights





LOCAL IMPROVEMENTS



Local Improvements

Two types involved with neighbourhood reconstruction:

City initiated

- City proposes improvement and advises property owners of improvement and projected costs.
e.g. 50/50 Sidewalk reconstruction

Property owner requested

- Property owners propose improvement through an Expression of Interest (EOI) and gather support for it.
e.g. Decorative streetlights

Sidewalk Reconstruction

- City and property owner share costs (50/50) of sidewalk reconstruction adjacent to the owner's property.





Sidewalk Reconstruction

- The current 2016 Residential Local Improvement rates are:
 - \$204.21/m of lot frontage for one time payment, or
 - \$14.29/m of lot frontage for amortized payment over 20 years.
- For example, a typical 15.24m (50 ft.) frontage would be:
 - \$3,112.16 one-time cash payment to the City, or
 - \$217.78/year for 20 years amortized on your local improvement.

Sidewalk Reconstruction

- Is done by project area.
- A map of the project areas is provided with your Local Improvement Notice.
- If 50% +1 of property owners in any given project area petition against the local improvement, it is defeated.



Sidewalk Reconstruction

Sidewalk Reconstruction



Sidewalk Maintenance



Decorative Street Lighting

Property owner requested local improvement:

- Type selected by [July 4, 2016](#); otherwise standard LED streetlights only
- City will mail an Expression of Interest package to property owners by [Sept 1, 2016](#)
- Signed Expression of Interest package to be received by City by [Nov 15, 2016](#)
- Must have [50%+1](#) support from the neighbourhood property owners to agree to pay the additional costs for decorative lighting beyond standard streetlights



Decorative Street Blades

- Communities that opt for decorative streetlights also have the choice to add decorative street blades at no cost.
- Blade options will be included with the decorative streetlight package.





MONTROSE GREAT NEIGHBOURHOODS CAPITAL PROGRAM



Great Neighbourhoods Capital Program

This program makes improvements on City property in residential neighbourhoods. These investments:

- Focus on enhancing neighbourhood livability and community connectivity
- Are unique to each neighbourhood
- Are coordinated with work planned in the neighbourhood to maximize investments



Great Neighbourhoods Capital Program



Harry Hardin Park in Fulton Place
BEFORE

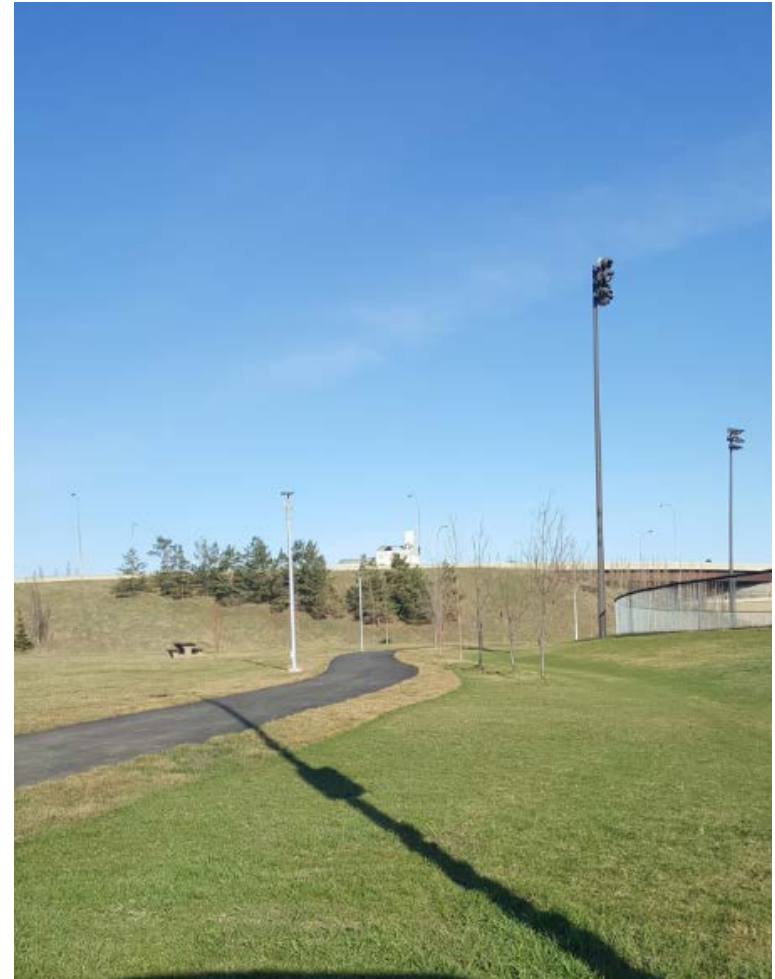


Harry Hardin Park in Fulton Place
AFTER

Great Neighbourhoods Capital Program

Constructed shared-use path at:

- Wally Footz Field





MONTROSE

As you are looking at the displays, we would like to hear your suggestions around pedestrian and cycling access, traffic concerns or opportunities to improve the livability of your neighbourhood.



NEXT STEPS



What To Expect

- Drainage renewal work is currently underway
- Deadline to select a decorative lighting and street blade option and send request to the City is July 4, 2016.
- Local Improvement notices will be sent out late 2016 or early 2017.
- Road, curb and sidewalk construction starts in Spring 2017.
- Anticipated completion date is Fall 2018.

What To Expect



In late 2016 or early 2017 another public meeting will be held to inform you of:

- Final designs
- Construction and local improvement process

Residents will get information at their homes throughout the construction process about what is happening when and what is required of residents.



Information & Feedback

INFO

Call: 311

Email: BuildingGreatNeighbourhoods@edmonton.ca

Website: edmonton.ca/BuildingGreatNeighbourhoods

FEEDBACK

- Comment forms available at front desk or survey online
- Will accept comments for [6 weeks](#) after tonight's meeting



Edmonton Census 2016



Count **Yourself** In – Online!

Edmonton.ca/census
780-496-8008