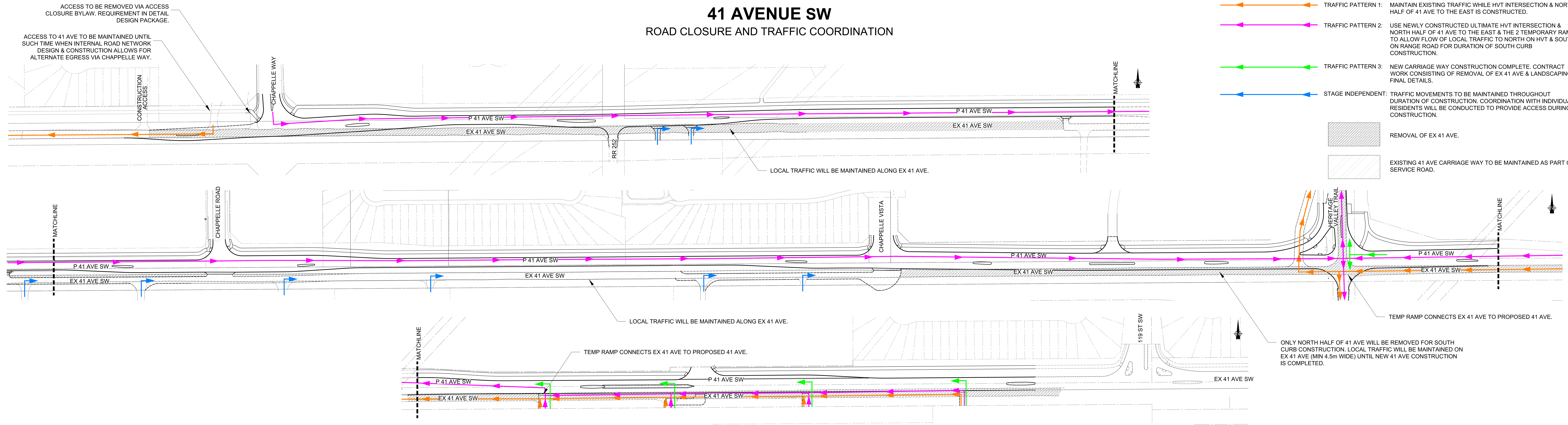


41 AVENUE SW

ROAD CLOSURE AND TRAFFIC COORDINATION



- TRAFFIC PATTERN 1: MAINTAIN EXISTING TRAFFIC WHILE HVT INTERSECTION & NORTH HALF OF 41 AVE TO THE EAST IS CONSTRUCTED.
 - TRAFFIC PATTERN 2: USE NEWLY CONSTRUCTED ULTIMATE HVT INTERSECTION & NORTH HALF OF 41 AVE TO THE EAST & THE 2 TEMPORARY RAMPS TO ALLOW FLOW OF LOCAL TRAFFIC TO NORTH ON HVT & SOUTH ON RANGE ROAD FOR DURATION OF SOUTH CURB CONSTRUCTION.
 - TRAFFIC PATTERN 3: NEW CARRIAGE WAY CONSTRUCTION COMPLETE. CONTRACT WORK CONSISTING OF REMOVAL OF EX 41 AVE & LANDSCAPING FINAL DETAILS.
 - STAGE INDEPENDENT: TRAFFIC MOVEMENTS TO BE MAINTAINED THROUGHOUT DURATION OF CONSTRUCTION. COORDINATION WITH INDIVIDUAL RESIDENTS WILL BE CONDUCTED TO PROVIDE ACCESS DURING CONSTRUCTION.
- REMOVAL OF EX 41 AVE.
- EXISTING 41 AVE CARRIAGE WAY TO BE MAINTAINED AS PART OF SERVICE ROAD.