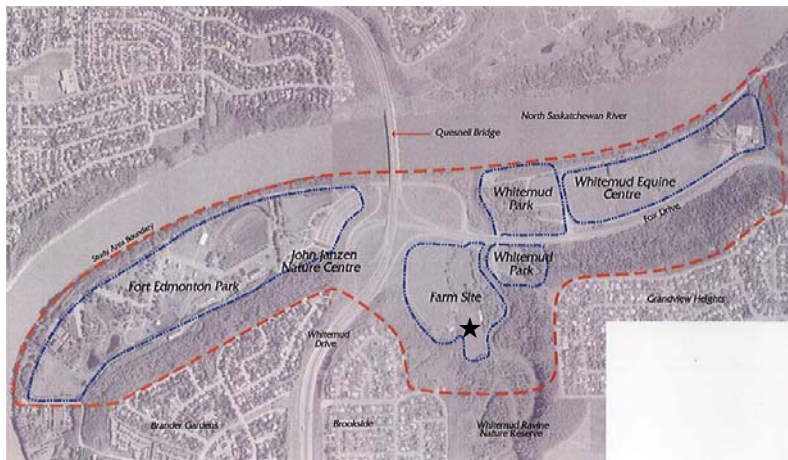


Whitemud Integrated Plan Amendment

Indigenous Elders Proposal - Kihci Askiy (Sacred Land)

History of the Project

- Whitemud Integrated Plan approved by Council in 2003 is a comprehensive plan for the area including: Fort Edmonton Park, John Janzen Nature Centre, the Whitemud Equine Centre and Whitemud Park. A visual of the study area is indicated by a ★ on the map below.



- In 2006 the City of Edmonton received a proposal from the Indigenous Elders Cultural Resource Circle Society (IECRCS) to utilize a portion of the Fox Farm site for more regular cultural and ceremonial learning experiences for both Aboriginal and non-aboriginal peoples.
- In July 2008, City Council supported a review of the Whitemud Integrated Plan to consider the proposal by the Society.

The Indigenous Elders Cultural Resource Circle Society is:

- A Council of Elders: 16 Members and Grand Council
- Non-profit Society since late 2006
- Coordinating cultural resources for the Aboriginal Community in Edmonton, creating opportunities for cultural access and currently holding regular ceremonies and activities on site.

The Indigenous Elders – Kihci Askiy Proposal is:

- A land area for Aboriginal Cultural and Ceremonial activities within the city of Edmonton
- A place where the diversity of Aboriginal Cultures can practice ceremonies and prayer
- A place where Youth and Families can access cultural resources
- A place where Edmontonians can learn about the traditions of Aboriginal people
- A much needed resource for Edmonton's growing Aboriginal population
- A place for Aboriginal people to reconnect: identity, spirit, and purpose
- A place to learn
- A place of Natural and Cultural History

The Program Components of the Indigenous Elders – Kihci Askiy Proposal include:

- Ceremony and Cultural events
- Learning Programs
- Special Events