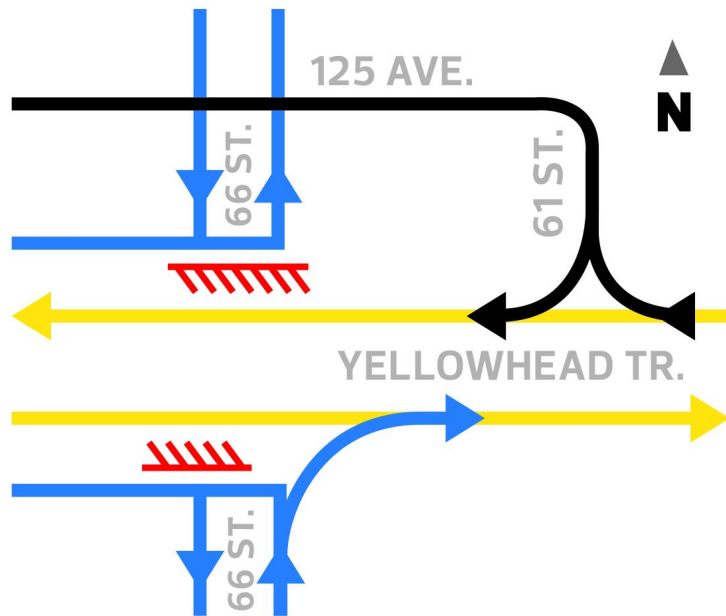
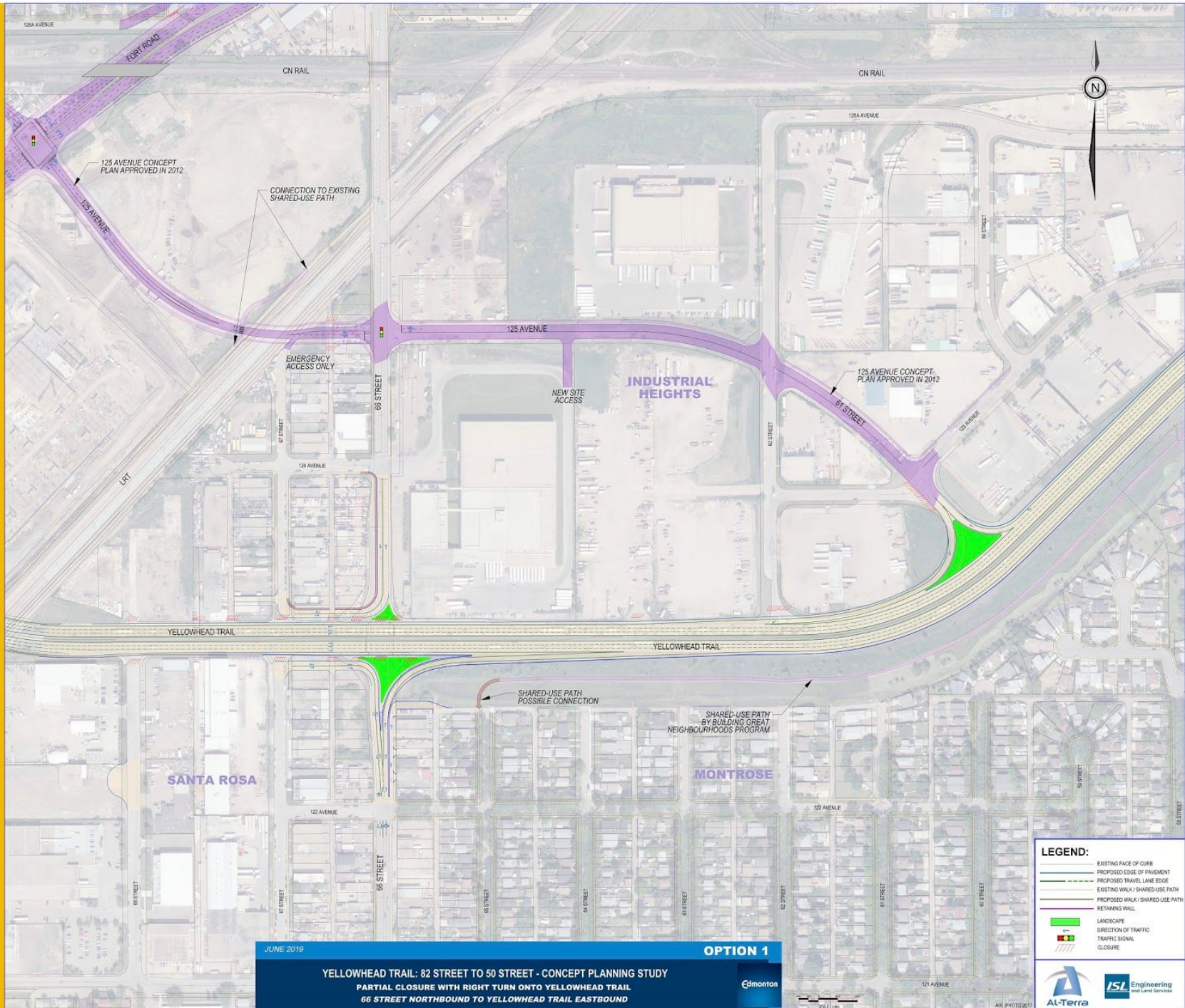


## Option 1: Partial Closure with Right Turn onto Yellowhead Trail



- No north-south connection across Yellowhead at 66 Street: access north and south provided via adjacent roads
- 66 Street access to Yellowhead limited: northbound to eastbound only
- Southbound 66 Street to westbound Yellowhead Trail access via 125 Avenue
- Westbound access to north 66 Street and area via new 61 Street/125 Avenue
- Eastbound access to south 66 Street not provided: space limitation
- Possible changes to the roadway network at Wayne Gretzky Drive, 118 Avenue and 66 Street, and the 50 Street interchange may be required to accommodate heavy truck movements
- Some changes to business accesses
- Minimal impact to private property
- No visual impact
- Lowest cost
- Least disruption during construction
- Pedestrian and bike connection across Yellowhead Trail not provided

# OPTION 1 - PARTIAL CLOSURE WITH RIGHT TURN ONTO YELLOWHEAD TRAIL



JUNE 2019

OPTION 1

**YELLOWHEAD TRAIL: 82 STREET TO 50 STREET - CONCEPT PLANNING STUDY**  
 PARTIAL CLOSURE WITH RIGHT TURN ONTO YELLOWHEAD TRAIL  
 66 STREET NORTHBOUND TO YELLOWHEAD TRAIL EASTBOUND



AKN PHOTO 2017

**LEGEND:**

- EXISTING FACE OF CURB
- PROPOSED EDGE OF PAVEMENT
- PROPOSED TRAVEL LANE EDGE
- EXISTING WALK / SHARED-USE PATH
- PROPOSED WALK / SHARED-USE PATH
- RETAINING WALL
- LANDSCAPE
- DIRECTION OF TRAFFIC
- TRAFFIC SIGNAL
- CLOSURE

