

Whitemud Drive Planning Study Update

APRIL 2014

About the Project

Whitemud Drive, west of Anthony Henday Drive to 231 Street is an important link in the City's transportation network, serving as both a commuter route and a goods movement corridor.

The City of Edmonton is reviewing concept plans previously completed for this corridor over the past decade. These studies have identified the ultimate design for Whitemud Drive and outlined interim and long-term requirements such as right-of-way, infrastructure upgrades and estimated costs.

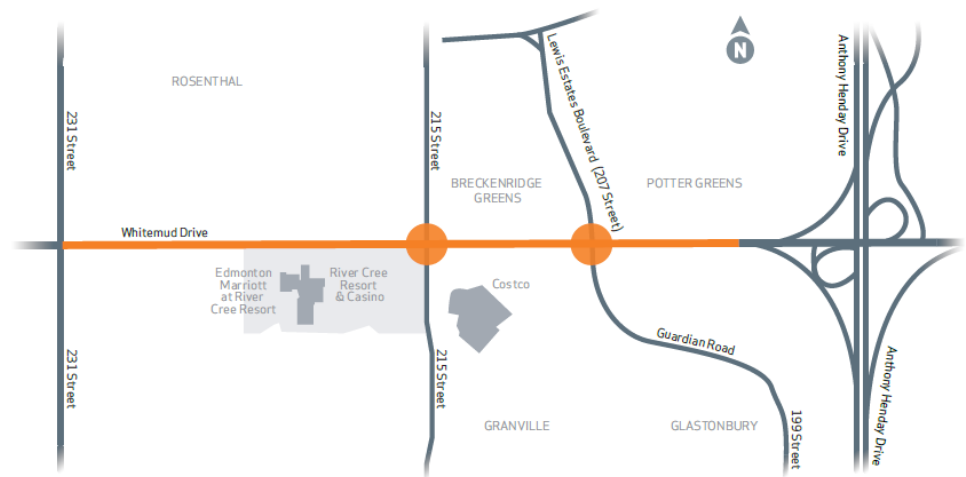
The most recent concept plan recommended grade-separated interchanges at Guardian Road/Lewis Estates Boulevard (207 Street), Winterburn Road (215 Street) and Hillview Road (231 Street). It is important to revisit and update the plans to ensure that the long-term plans will meet the future traffic needs.

Study Purpose

The purpose of this study is to:

- Confirm road alignments and interchange configurations;
- Validate traffic forecasts with current and proposed development in the area; and
- Estimate construction timing to accommodate current and future needs.

The study outcome will be a long-term plan that can be staged for implementation over the next 30 years. The updated study will be complete in early 2014, with construction start dates unknown at this time.



Public Involvement

Public involvement is important for this concept planning study to help us better understand your transportation issues and concerns for this corridor and to deliver the best plan for Edmontonians.

PHASE 1	PHASE 2
Fall 2013	April 2014
Project information available on website	Public open house
Stakeholder interviews	Online feedback
	Public input summary available on website

Find Out More

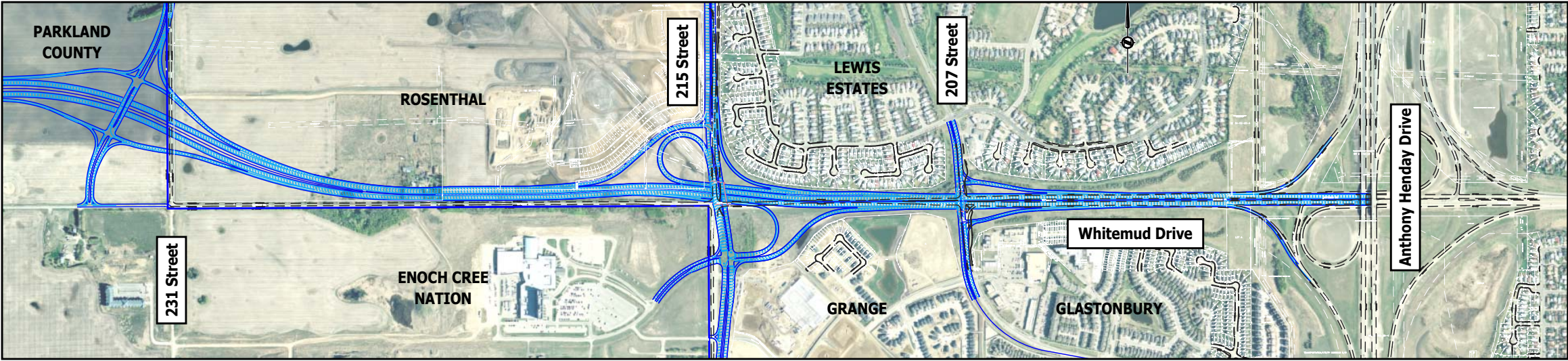
For additional information, please visit:
www.edmonton.ca/whitemudwest

Or contact:

Ryan Betker, Project Team:
rbetker@mcelhanney.com

Natalie Lazurko, City of Edmonton:
natalie.lazurko@edmonton.ca

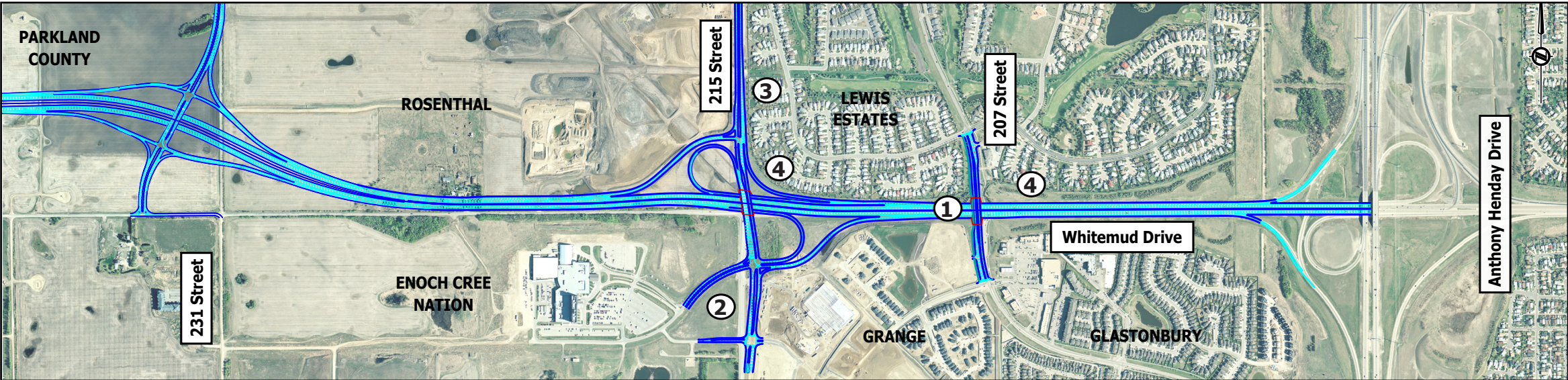
Previous concept for Whitemud Drive



Reasons to revisit previous plan:

- Intensity of commercial development has changed
- Ongoing development has put pressure on the surrounding road network
- A better understanding of future construction staging and timing is required
- A review of opportunities to mitigate impacts to surrounding communities is needed

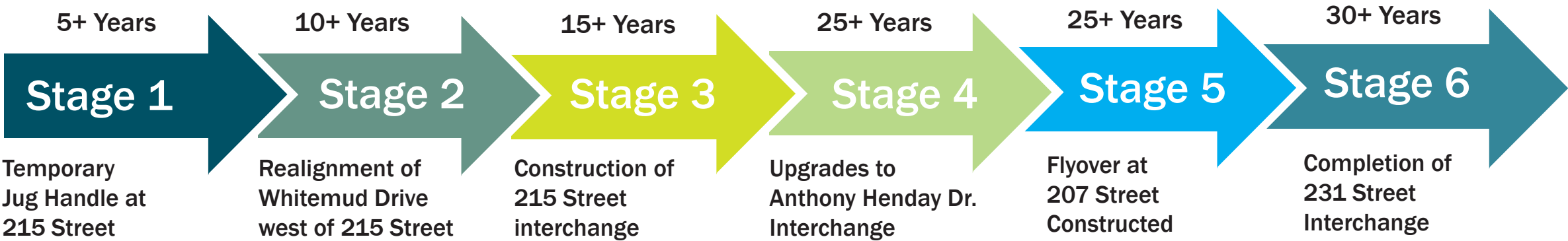
Updated concept for Whitemud Drive



What's Changed from the Previous Plan?

- ① Flyover at 207 Street
- ② Modified Enoch access south of Whitemud Drive at 215 Street
- ③ Reduced number of lanes for future 215 Street ramps and north/south connections
- ④ Increased distance between ramps and property lines to ease adjacent community impacts

Estimated Staging and Implementation Timing*



*Actual construction timing to be determined at later stages of development

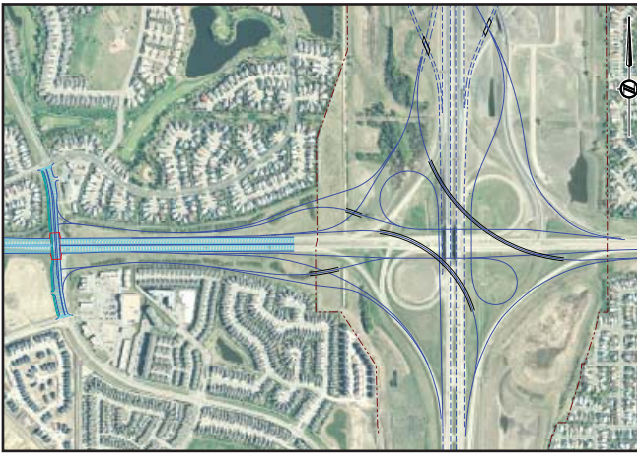


Figure 1: Previous 2001 concept for ultimate Anthony Henday

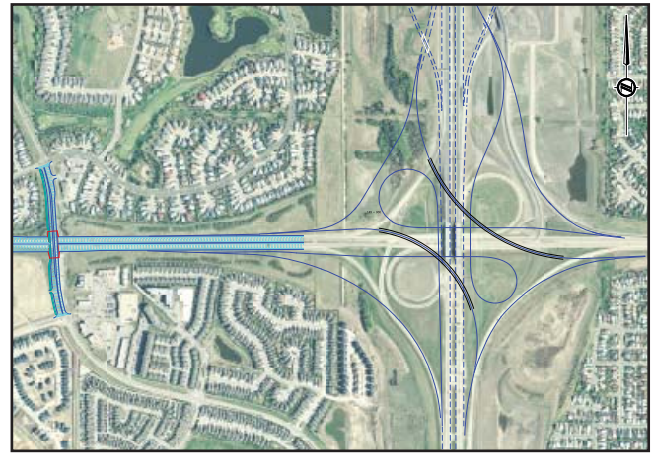


Figure 2: Revised configuration for ultimate Anthony Henday

The updated concept for Whitemud Drive includes removal of ramps at 207 Street to become a flyover across Whitemud Drive. This eliminates the need for extra weaving ramps for the future Anthony Henday Drive interchange configuration, increasing the buffer between the interchange and adjacent homes. (see Figures 1 and 2)

The removal of ramps at 207 Street (Lewis Estates Blvd/Guardian Road) will require the use of alternate access routes to **Lewis Estates** and **Glastonbury**, including:

1. Stony Plain Road/215 Street interchange
2. Whitemud Drive/215 Street interchange
3. Fly over bridge at 207 Street
4. Anthony Henday Dr/87 Ave interchange
5. 62 Avenue to 215 Street connection
6. Anthony Henday Dr/Callingwood Rd interchange

See Figure 3 for alternate routing details.

This is a **long term** concept plan, and will be staged for implementation as needed over the next 30 years.

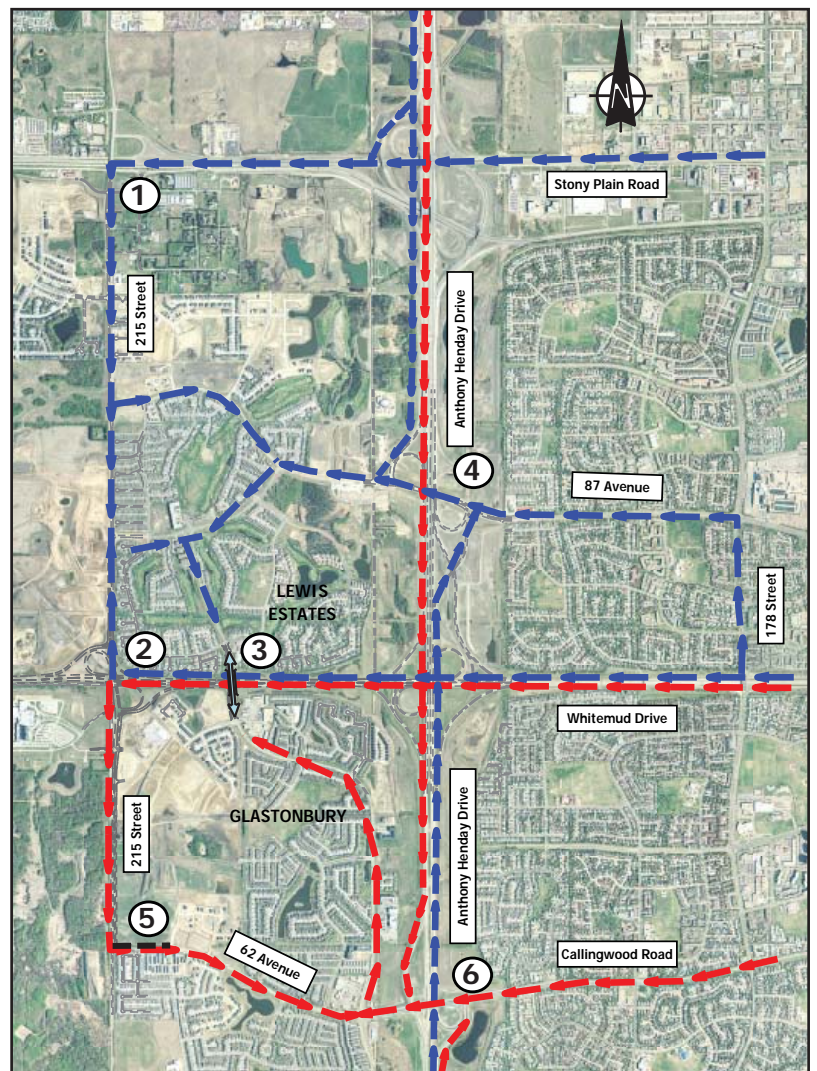


Figure 3: Alternative Access Routes