

# PUBLIC ENGAGEMENT

SHARE YOUR VOICE SHAPE OUR CITY

Edmonton

## Centre LRT Study

Strathcona/Downtown/Bonnie Doon

Phase 1 Engagement July – August 2017

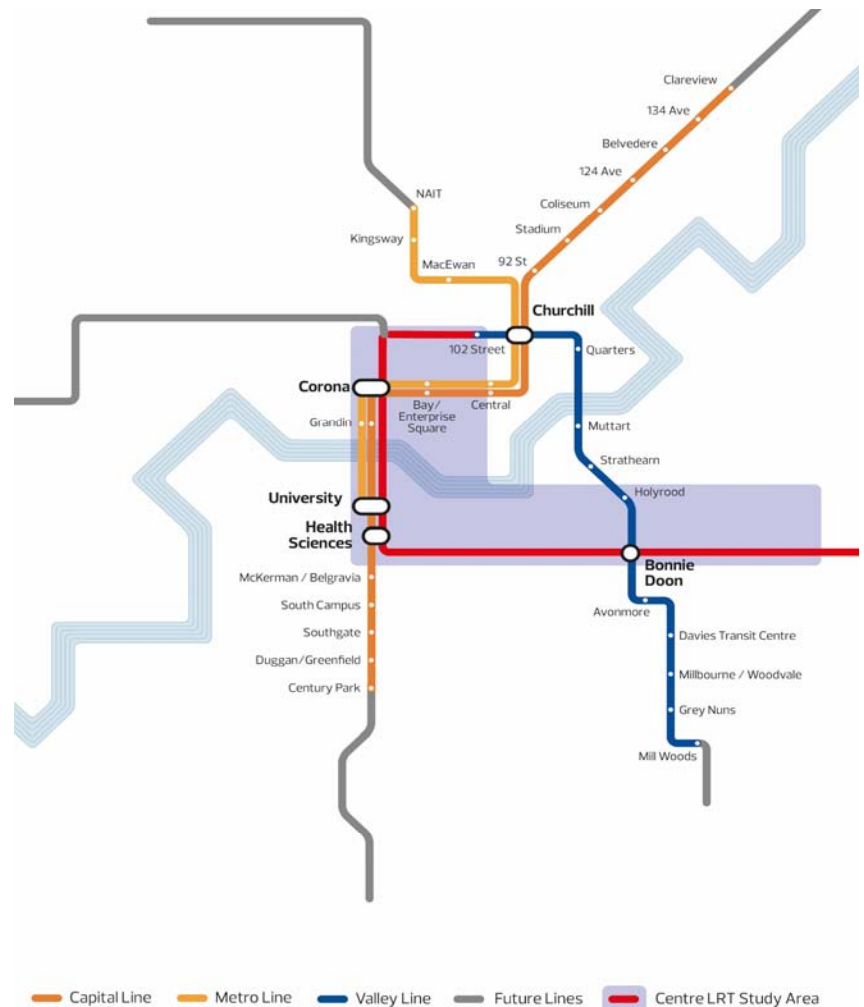
The Centre LRT Study will determine the best new LRT route to connect Strathcona, Downtown, Bonnie Doon and east Edmonton.

### What we know about the new LRT

- It will be a low-floor system
- It will travel in its own lane
- It will flow with traffic at street speed limits
- It will connect with the new Valley Line in Bonnie Doon and Downtown
- It will cross the river

### What we need to determine

- Route location – the streets and avenues it will travel down
- Stop locations – where the stops make the most sense
- Track alignment – where the tracks fit in the roadway



## Now is the time to SHARE YOUR VOICE

### Phase 1 Public Engagement

July 12 to August 13, 2017

We want to hear from you!

Complete our feedback form online at  
[www.edmonton.ca/centrelrtstudy](http://www.edmonton.ca/centrelrtstudy)

July 2017

- What places are important to you in the study area?
- What additional routes or sections of route should be considered?
- Where do you come from and go to in the study area?
- What is important to you when considering the potential LRT routes?

# PUBLIC ENGAGEMENT

SHARE YOUR VOICE SHAPE OUR CITY

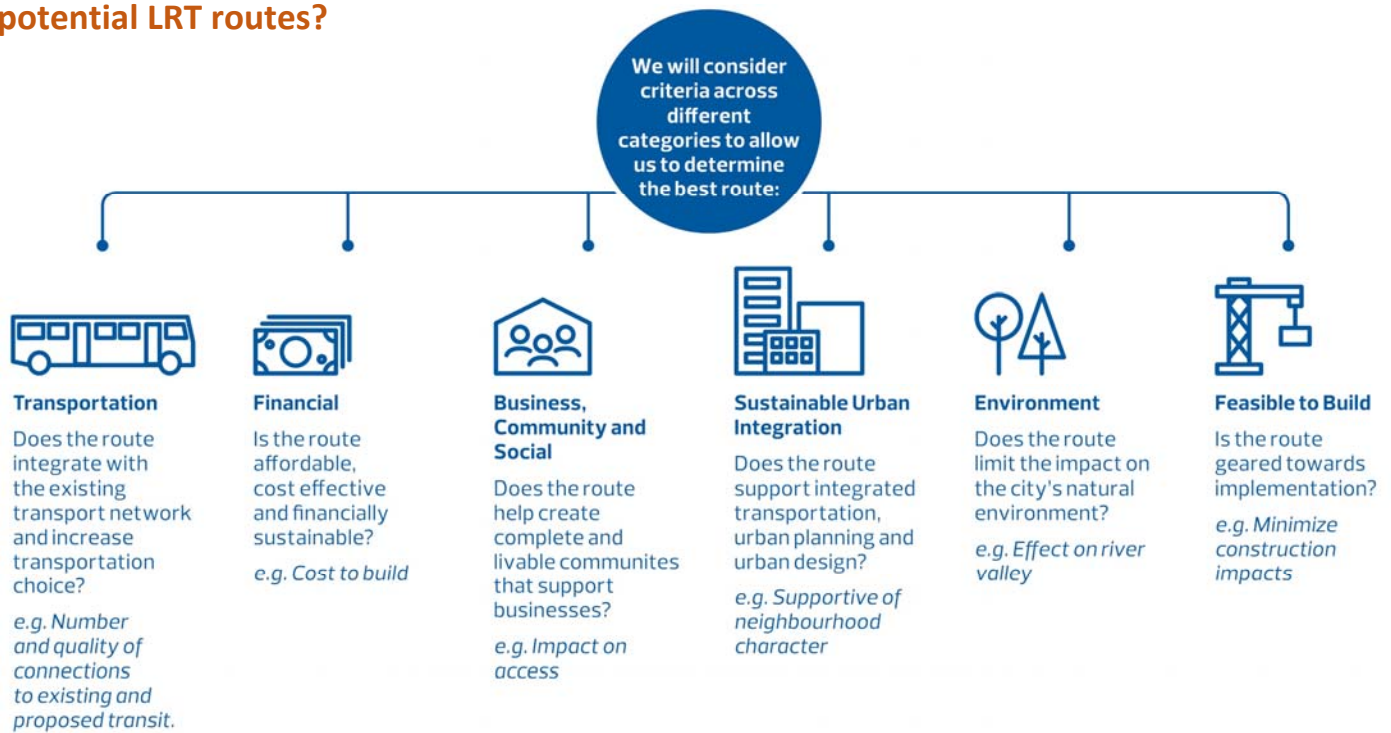
Edmonton

## Centre LRT Study

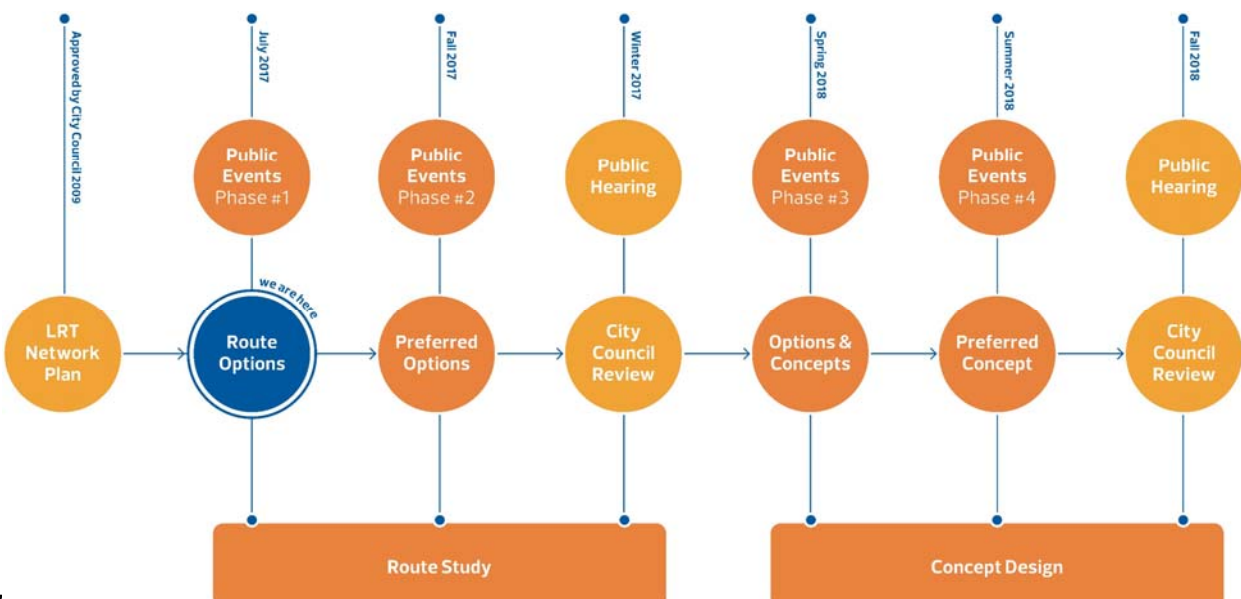
Strathcona/Downtown/Bonnie Doon

Phase 1 Engagement July – August 2017

### What is important when considering the potential LRT routes?



### Where are we in the Centre LRT Study process?



July 2017

# PUBLIC ENGAGEMENT

SHARE YOUR VOICE SHAPE OUR CITY

Edmonton

## Centre LRT Study

Strathcona/Downtown/Bonnie Doon

Phase 1 Engagement July – August 2017

### What is Low-Floor LRT?

This new LRT route will be a low-floor, urban style LRT which is different than the high-floor LRT system currently in Edmonton.

#### Low-floor LRT

- Predominantly operates at street level in dedicated lanes
- Uses traffic signals to operate with traffic
- Stops located at street-level, curb height
- Links directly to transit, pedestrian and bicycle connections
- Provides universally accessible and step free access from platform to train

#### High-floor LRT

- Operates in dedicated rail corridors
- Uses railway crossings to cross intersections
- Stops at large dedicated stations with high platforms

- Links via stairs, escalators and elevators to transit, pedestrian, and bicycle connections
- Provides universally accessible and step free access from platform to train using a ramp



## NEXT STEPS

Over the next few months, the project team will conduct technical evaluations of the route options and consider that, together with your input and City policies to determine the preferred LRT route. The preferred LRT route will be presented for your feedback in November 2017 and to City Council before the end of 2017. This will be followed by the development of a Recommended Concept Plan, including station locations and alignment (where the track fits within the route), which will be presented to City Council prior to the end of 2018. Concept planning public engagement will continue in 2018.

**For more information, or to share your voice, visit:**

centrelrtstudy@edmonton.ca  
www.edmonton.ca/centrelrtstudy  
Call: 311

July 2017