

# LEGEND

	Proposed Right of Way		Access Closure
	Proposed Roadway		4x9 Bus Stop Pad
	Existing Roadway		
	Railway		
	3m Asphalt SUP		
	1.5m Concrete Sidewalk		

DESIGN SPEED = 70 km/h  
POSTED SPEED = 60 km/h

Note:  
Road dimensions for the City of  
Edmonton are to the Face of Curb



PERMIT TO PRACTICE P6383

Manager, Transportation Planning Branch

Director, Facility & Capital Planning

CONCEPT - SUBJECT TO PRELIMINARY SURVEY AND DESIGN

## Figure 2-1

34 Street, Whitemud Dr to 51 Avenue  
Interim Alignment

20m 0 40m

DRAWN: TD  
REVIEWED:  
DATE: 2013 03 04

PLAN NO.  
**S034-1301**







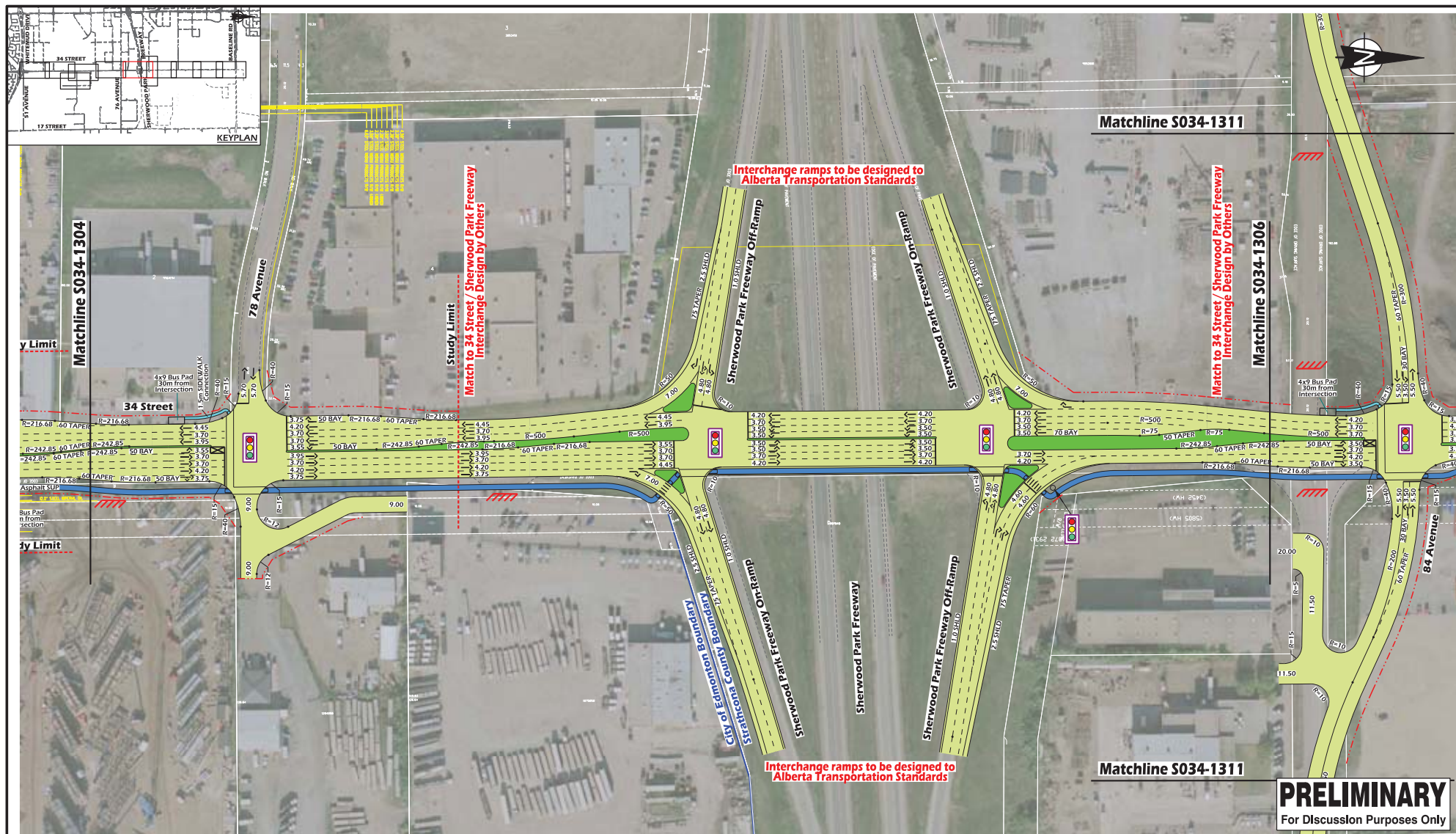






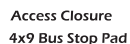






**PRELIMINARY**  
For Discussion Purposes Only

- LEGEND**
- Proposed Right of Way
  - Proposed Roadway
  - Existing Roadway
  - Railway
  - 3m Asphalt SUP
  - 1.5m Concrete Sidewalk



DESIGN SPEED = 70 km/h  
POSTED SPEED = 60 km/h

Note: Road dimensions for Strathcona County are to lip of gutter



PERMIT TO PRACTICE P6383

Manager, Transportation Planning Branch

Director, Facility & Capital Planning

CONCEPT - SUBJECT TO PRELIMINARY SURVEY AND DESIGN

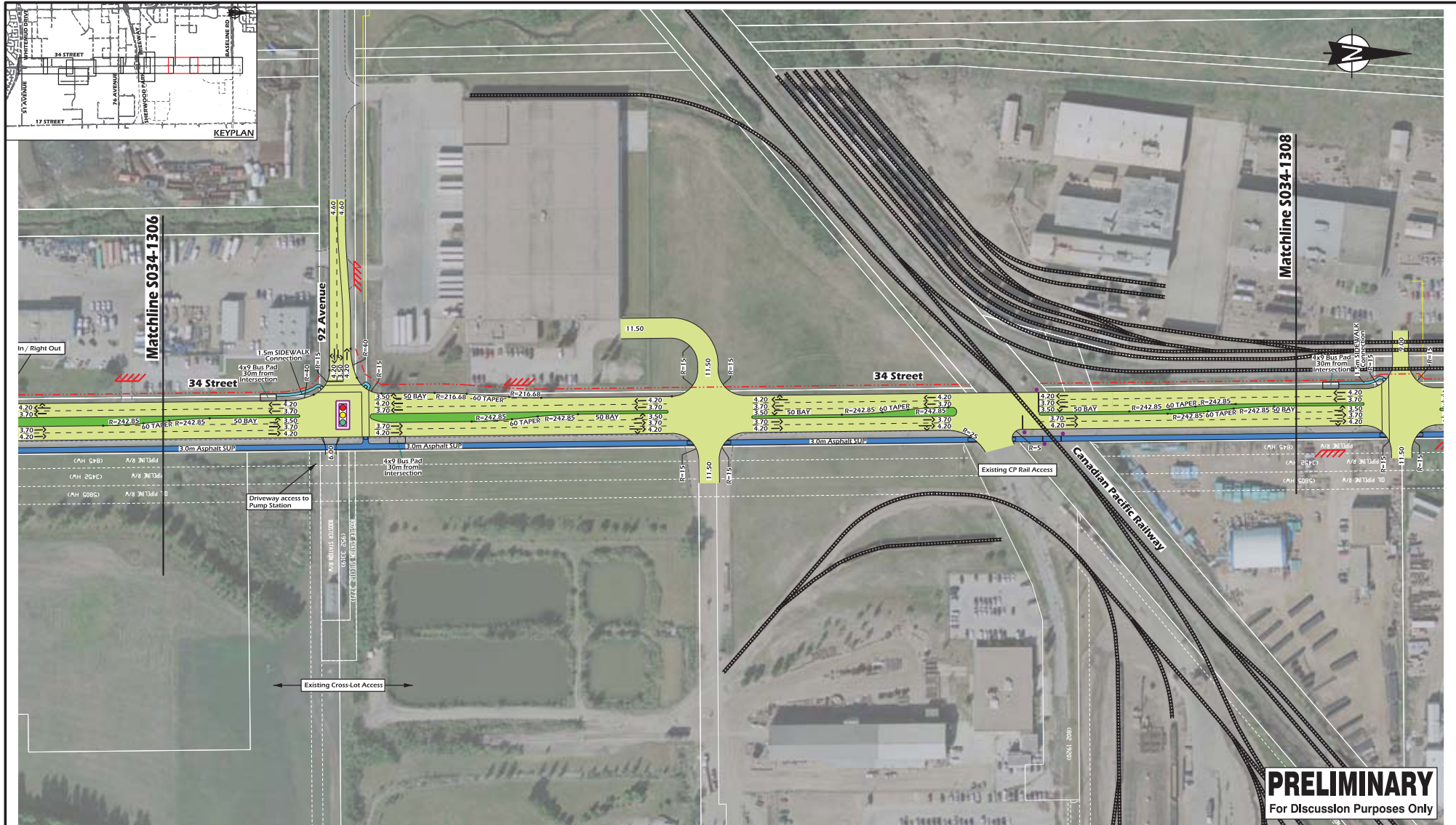
**Figure 1-5**  
34 Street, Whitemud Dr to Baseline Road  
Conceptual Alignment

DRAWING TO  
REVIEWED  
DATE: 2013 02 28

PLAN NO.  
**S034-1305**







#### LEGEND

- Proposed Right of Way
- Proposed Roadway
- Existing Roadway
- Railway
- 3m Asphalt SUP
- 1.5m Concrete Sidewalk



Access Closure



4x9 Bus Stop Pad

DESIGN SPEED = 70 km/h  
POSTED SPEED = 60 km/h

Note:  
Road dimensions for Strathcona  
County are to lip of gutter



**McElhanney**  
Consulting Services Ltd.

**City of Edmonton**  
TRANSPORTATION SERVICES

**STRATHCONA COUNTY**

Manager, Transportation Planning Branch

Director, Facility & Capital Planning

PERMIT TO PRACTICE P6383

CONCEPT - SUBJECT TO PRELIMINARY SURVEY AND DESIGN

#### Figure 1-7

34 Street, Whitemud Dr to Baseline Road  
Conceptual Alignment

DRAWN TO  
REVIEWED  
DATE: 2013 02 28

PLAN NO.  
**S034-1307**

20m 0 40m



