

# WELCOME!

---

## Walterdale Bridge Replacement Public Information Session

The purpose of this meeting is to provide background and context information, and to share:

- the recommended option for the new Walterdale Bridge alignment
- the recommended option for the new Walterdale Bridge style

Presentations will be held in Westbury Theatre at 4:30 and 6:30 PM.

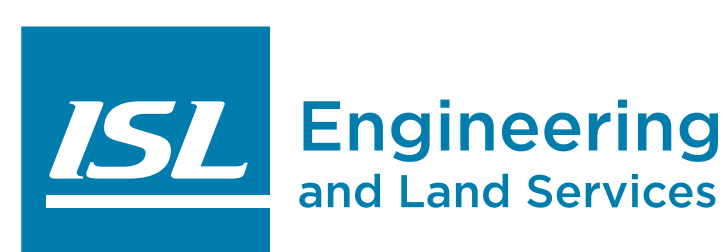
Project team members are available to answer your questions.

Please visit the display area to view the recommendations, speak with project team members, and fill out questionnaires.

An Open House for this project was held in November 2010 and stakeholder meetings and interviews have been conducted.

For updates about this project, please visit the City of Edmonton website: [www.edmonton.ca](http://www.edmonton.ca)

## Thank you!



# About the Walterdale Bridge Replacement

Walterdale Bridge has served Edmonton for nearly 100 years and is reaching the end of its structural life. The bridge spans the North Saskatchewan River at 105 Street. Previously completed bridge condition assessments, and the 2008 Walterdale Bridge Crossing Strategic Planning Concept Study, indicate that the bridge must be replaced by 2014.

The City of Edmonton has developed bridge alignment and bridge style recommendations for a functional, “signature” replacement bridge that will enhance the unique beauty of the river valley and surrounding neighbourhoods.

Project work is being coordinated with other planning initiatives in the area.

# Next Steps

## RECOMMENDED FINAL PLAN AND CONCEPT PLAN COMPLETION

April 2011

## PLAN GOES TO TRANSPORTATION AND PUBLIC WORKS COMMITTEE

April 12, 2011

## PLAN GOES TO COUNCIL

April 27, 2011

## DESIGN

May 2011—Feb. 2013

## CONSTRUCTION

Spring 2013—Fall 2014

# Agenda

## FORMAL PRESENTATIONS ON WALTERDALE BRIDGE:

4:30 & 6:30PM in Westbury Theatre

The presentations will be identical.

Each presentation will be followed by a brief question and answer session. The projects will also have display materials and project team members available for one-on-one discussions throughout the meeting.

# HISTORICAL AND CULTURAL CONSIDERATIONS

## DISCUSSION WITH ABORIGINAL ELDERS

- City of Edmonton Aboriginal Relations and the Project Team met with Elders from aboriginal communities throughout Alberta to discuss the Walterdale Bridge Replacement Project.
- Elders expressed agreement that ceremony and spirituality must play a significant role due to the bridge proximity to Fort Edmonton Cemetery and Traditional Burial Ground.
- The Project Team recognizes the importance of the Rossdale area as a focus of community identity and collective heritage and the cultural and spiritual significance of the Fort Edmonton Cemetery and Traditional Burial Ground in particular.
- The Project Team recognizes that human remains are present within the Fort Edmonton Cemetery and Traditional Burial Ground (as currently defined). Although this area will not be impacted by the Walterdale Bridge Replacement Project, the possibility of encountering human remains--although a low risk--is of paramount concern to all stakeholders consulted. As a result, the Walterdale Bridge Replacement Project will include a protocol that any human remains identified during the course of the Project will be treated with utmost care and respect, and reinterred to the Fort Edmonton Cemetery and Traditional Burial Grounds.

# HISTORICAL AND CULTURAL CONSIDERATIONS

## INTERPRETIVE BELVEDERE

- Construction of new bridge will require removal and relocation of the existing interpretive belvedere site at the northeast corner of the existing Walterdale Bridge.
- The Project Team has reviewed possible alternate sites for the relocation of the content and components of the interpretive belvedere in the same configuration and orientation as the existing interpretive belvedere.
- Reconstruction of the interpretive belvedere in the vicinity of the Fort Edmonton Cemetery (if this is selected as the ideal location) will require archaeological monitoring and testing prior to construction in accordance with Alberta Culture and Community Spirit requirements.

## EXISTING WALTERDALE BRIDGE:

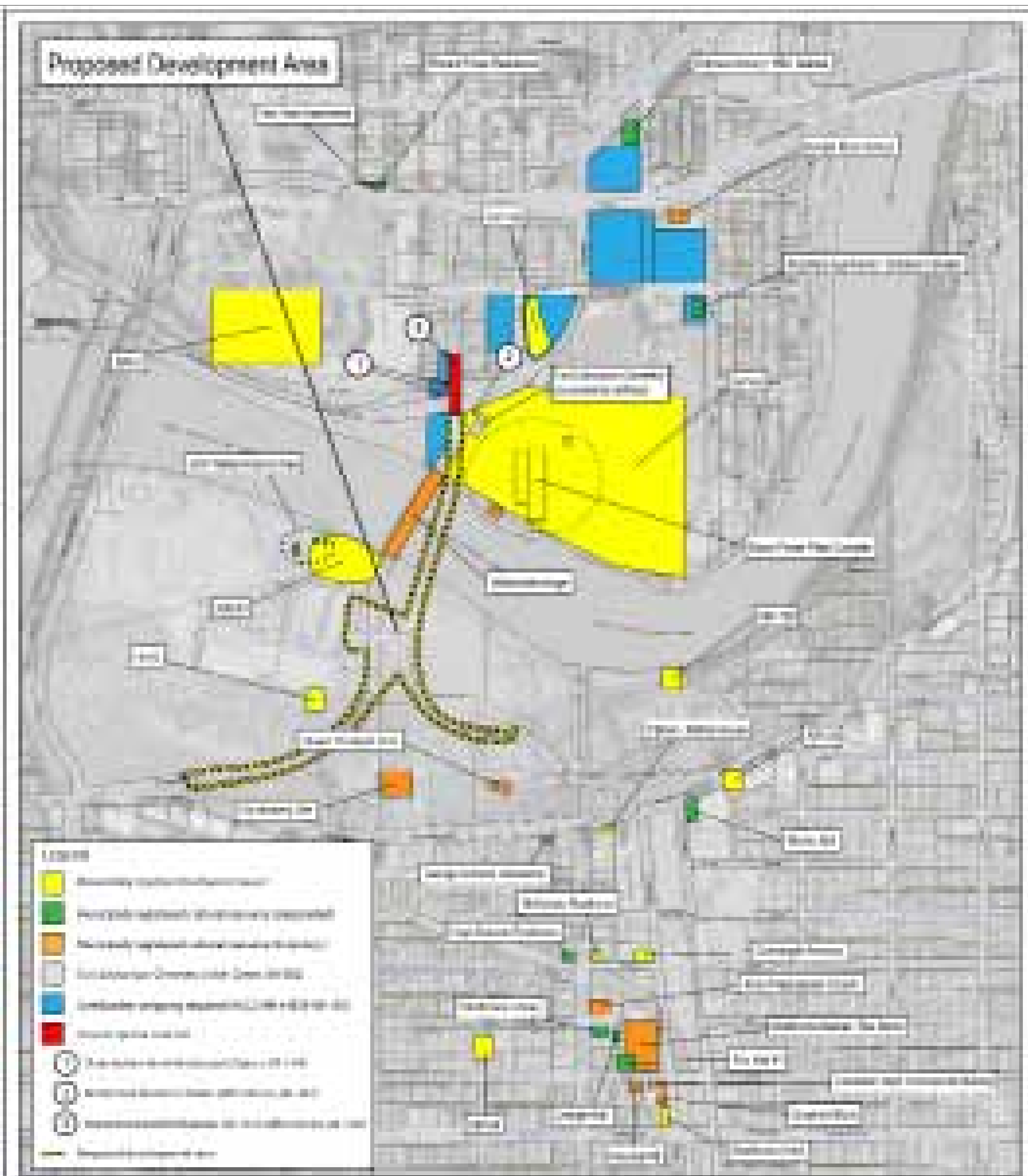
- It is no longer feasible to rehabilitate the existing bridge, consequently the existing Walterdale Bridge must be removed from service and de-constructed.
- The City of Edmonton is reviewing the possibility of relocating a portion of the bridge for use in another location, as well as the possibility of using components of the existing bridge as part of the bridge replacement and associated work.

# HISTORICAL AND CULTURAL CONSIDERATIONS

## CULTURAL RESOURCE MANAGEMENT PLAN

As a component of the Walterdale Bridge Replacement Project, a comprehensive Cultural Resource Management Plan will be initiated including:

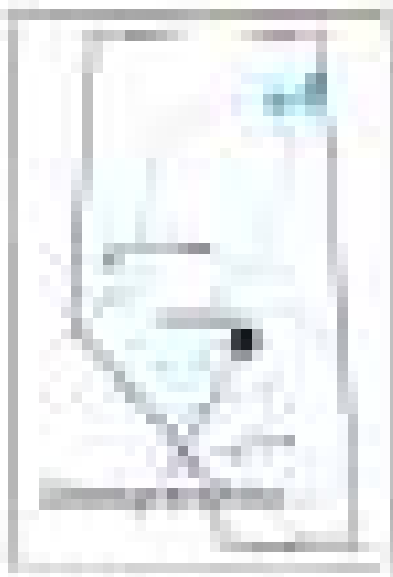
1. The controlled removal of soil fill and/or archaeological monitoring in lands impacted by the north bridge abutment in order to inspect intact sediments for cultural features.
2. Deep archaeological testing at locations within the development area not subject to previous archaeological assessment.
3. Where subsurface testing prior to construction is not possible due to existing roads, buried utility and infrastructure facilities or scheduling concerns related to construction, monitoring of all ground disturbance by an archaeologist.
4. Where potentially fossil bearing bedrock deposits will be impacted, monitoring and/or assessment by a palaeontologist.
5. Development a concept strategy for the replacement, reconstruction, and/or relocation of the interpretive belvedere.
6. Development of a protocol, that any human remains identified during the course of the Walterdale Bridge Replacement Project human remains identified during the course of the Project be treated with utmost care and respect, and reinterred to the Fort Edmonton Cemetery and Traditional Burial Grounds.



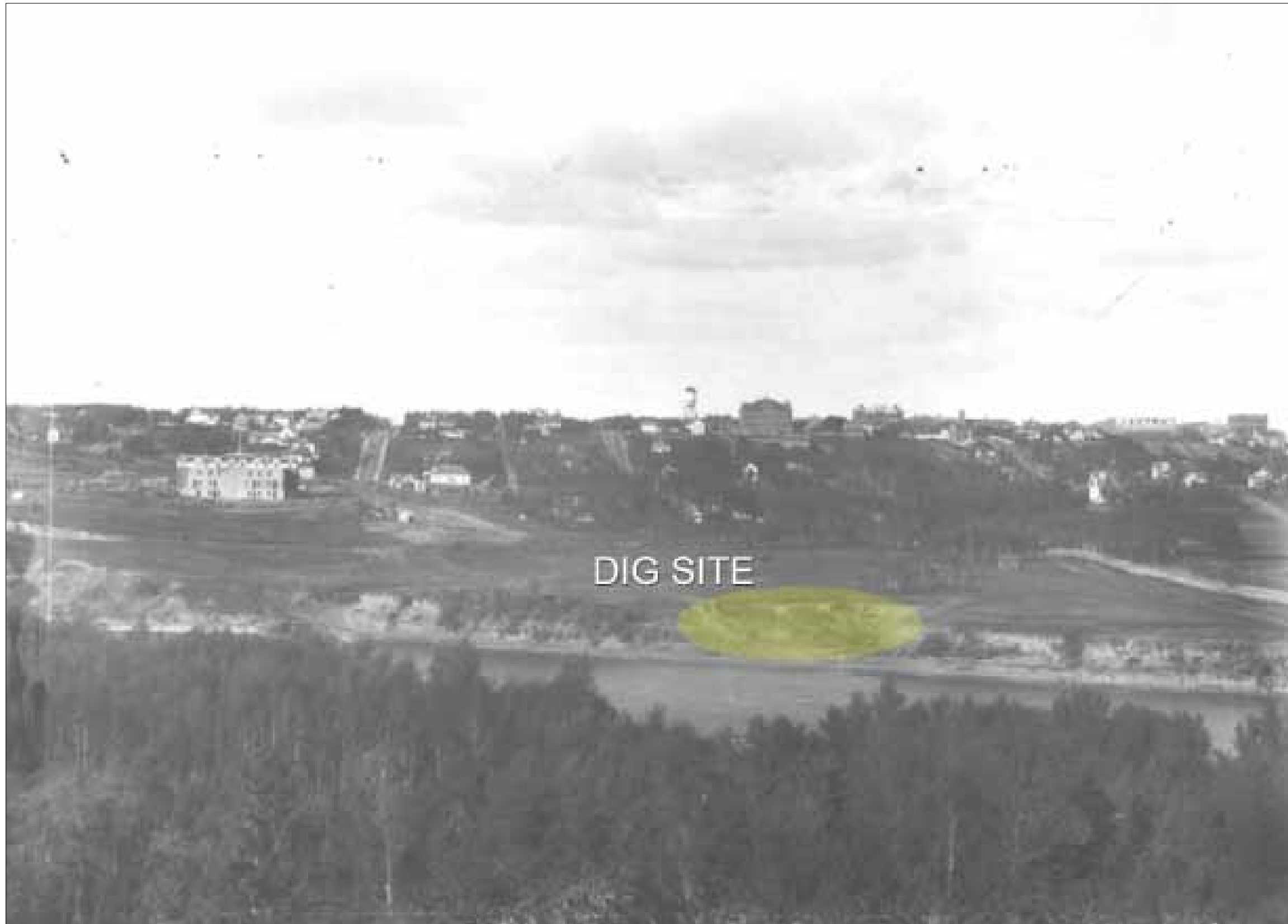
**TURTLE ISLAND  
CULTURAL RESOURCE MANAGEMENT INC.**



Scale	1:50,000	1:25,000	1:10,000
1 cm	500 m	250 m	100 m
1 inch	1250 m	625 m	250 m







WEST SIDE OF ROSSDALE, 1906



WALTERDALE BRIDGE CONSTRUCTION



WALTERDALE BRIDGE TODAY