



Walterdale Bridge Replacement

www.edmonton.ca/RoadPlans

Public Open House

November 18, 2010



Meeting Purpose

www.edmonton.ca/RoadPlans

- **To provide background and context information**
- **To share information on potential roadway modifications and bridge style options**
- **To gather your input on the options, specifically how they impact:**
 - Your use of the area as a motorist, transit user, resident, visitor, cyclist, and/or pedestrian;
 - Neighbourhood and community access; and,
 - Use and enjoyment of the River Valley and its parks and facilities.



Agenda

www.edmonton.ca/RoadPlans

- Project Objectives & Timelines
- Background & Context
- Key Design Considerations
- Roadway Options
- Bridge Styles
- Concluding Remarks
- Question & Answer Session

Project Timelines and Objectives

www.edmonton.ca/RoadPlans



Concept Phase: Review and evaluate alternatives, including

- Bridge location;
- Signature bridge styles;
- Approaches/exits (Queen Elizabeth Park Road/Walterdale Road);
- Access for affected adjacent stakeholders; and,
- Safe accommodation of pedestrians and non-motorized vehicles.



Background & Context

www.edmonton.ca/RoadPlans

- A replacement bridge is needed
 - 2008 study (*Walterdale Bridge Crossing Strategic Planning Concept Study.*)
- The replacement will be a functional signature bridge.
- Concept design to include location, alignment, impacts and constraints.
- Project work is being coordinated with other planning initiatives in the area, specifically including:
 - West Rossdale Urban Design Plan
 - Expo 2017
 - EPCOR Rossdale Repurposing



Key Design Considerations

www.edmonton.ca/RoadPlans

- Access/traffic accommodation from 82 Ave to 97 Avenue.
- Grades at south approach.
- Detouring and closure impacts, utility staging.
- Aesthetics — signature bridge.
- Traditional Burial Grounds and Fort Edmonton Cemetery Commemoration Site, historical resources.
- North Saskatchewan River Valley plans.
- Environmental policies and procedures.
- Integration with West Rossdale Urban Design Plan, EPCOR Rossdale repurposing, EXPO 2017 bid, and other area plans.
- Pedestrian and cyclist accommodation.



What We Heard

www.edmonton.ca/RoadPlans

- Conducted meetings/interviews with 14 key stakeholder groups to date.
- Met twice with Aboriginal Elders, including a pipe ceremony.
- **Issues raised by key stakeholders:**
 - The project presents an opportunity to address vehicle traffic issues and to improve pedestrian and cyclist circulation throughout the area.
 - The challenge for this project is to achieve a balance between providing improved access for private vehicles to downtown Edmonton and protecting/preserving the character, safety and integrity of the communities that the roadways approaching the bridge replacement will be impacting.



What We Heard (con't)

www.edmonton.ca/RoadPlans

Issues Raised by Key Stakeholders:

- Better signage and wayfinding should be provided to improve circulation into and out of the river valley.
- The bridge design needs to reflect the history of the area.
- This is a relatively small area and the bridge and roadways must fit the small area.
- East/west flows (River Valley Road through Rosssdale) must be maintained and/or improved.
- Make better use of Gateway Boulevard and Calgary Trail (not 99 Street and 109 Street) to funnel vehicle traffic in and out of downtown.



What We Heard (con't)

www.edmonton.ca/RoadPlans

Issues Raised by Key Stakeholders:

- Current traffic volumes on Gateway Boulevard, Calgary Trail and 109 Street onto Walterdale Hill and Queen Elizabeth Park Road are tolerable, but these should not increase and no additional property or parkland should be sacrificed to achieve greater roadway capacity.
- Do not continue to have 4 lanes south of the bridge have to merge into two lanes on the bridge and then expect to 4 lanes again on the other side of the bridge.
- Two way traffic on the bridge is desirable.

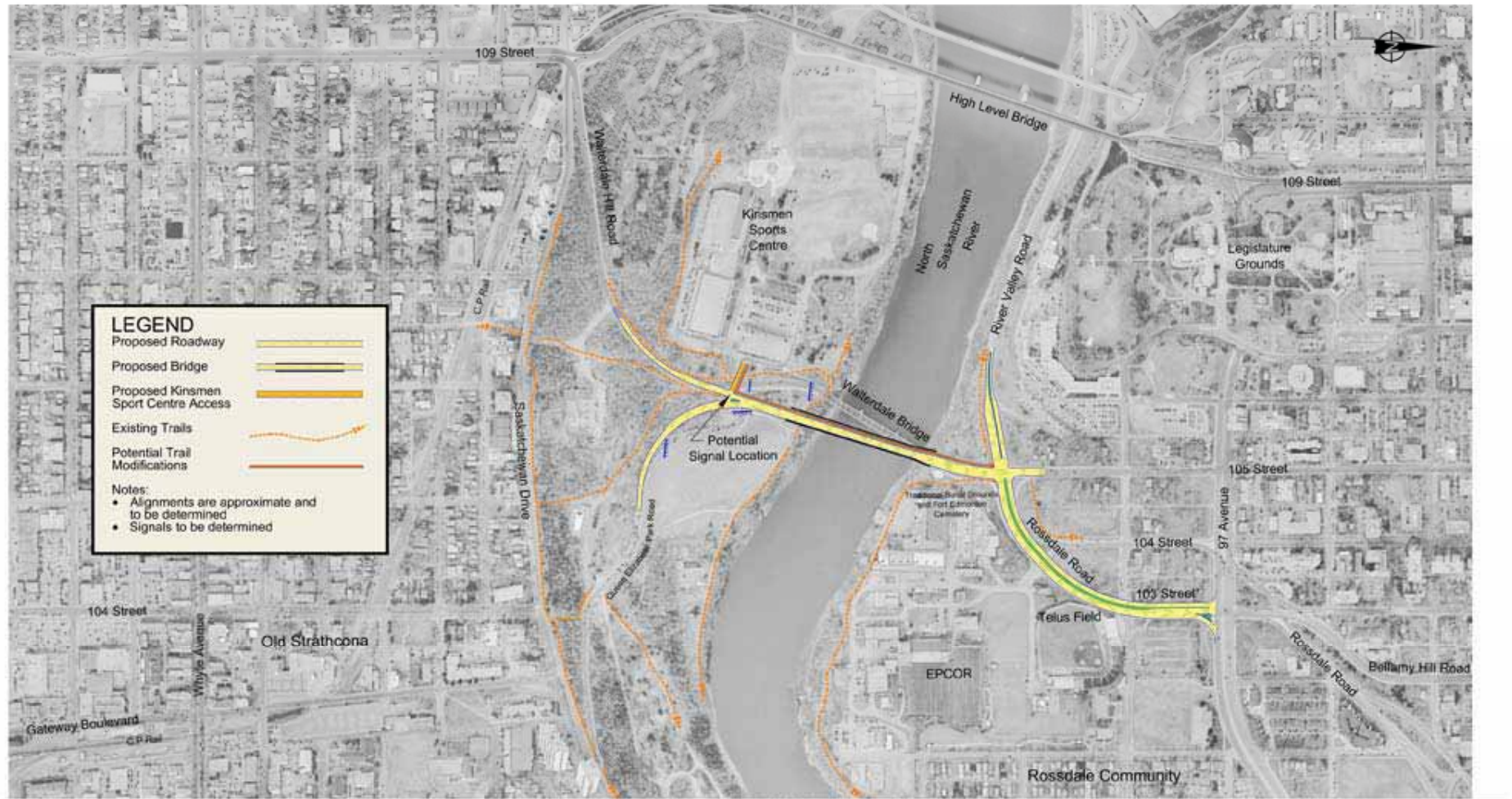


What Do You Think?

www.edmonton.ca/RoadPlans

How do these options impact:

- Your use of the area as a motorist, transit user, resident, visitor, cyclist, and/or pedestrian;
- Neighbourhood and community access; and,
- Use and enjoyment of the River Valley and its parks and facilities.

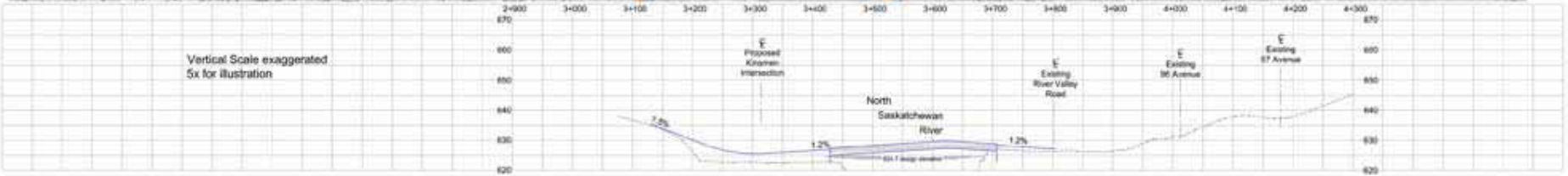


LEGEND

- Proposed Roadway
- Proposed Bridge
- Proposed Kinsmen Sport Centre Access
- Existing Trails
- Potential Trail Modifications

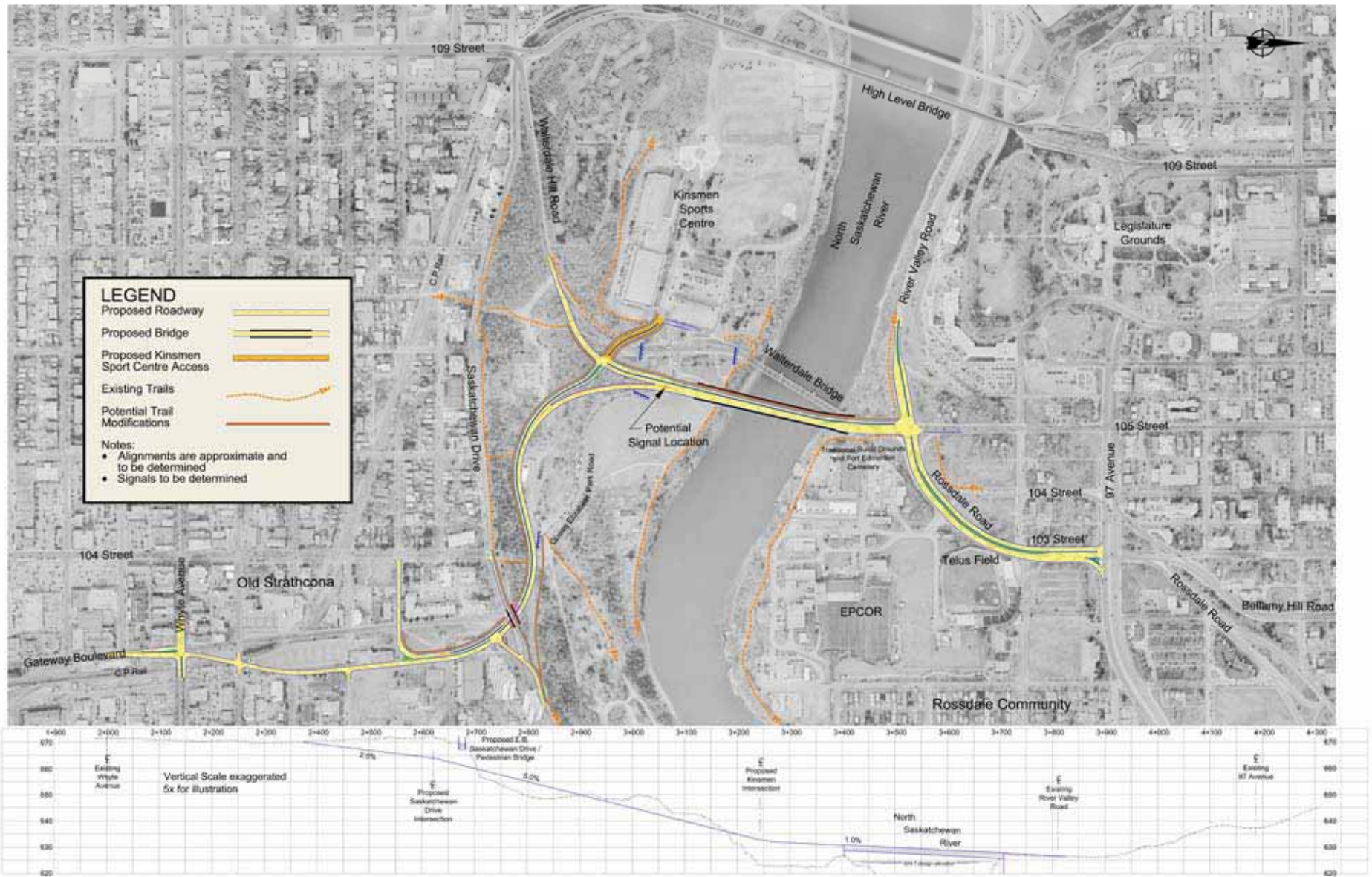
Notes:

- Alignments are approximate and to be determined
- Signals to be determined

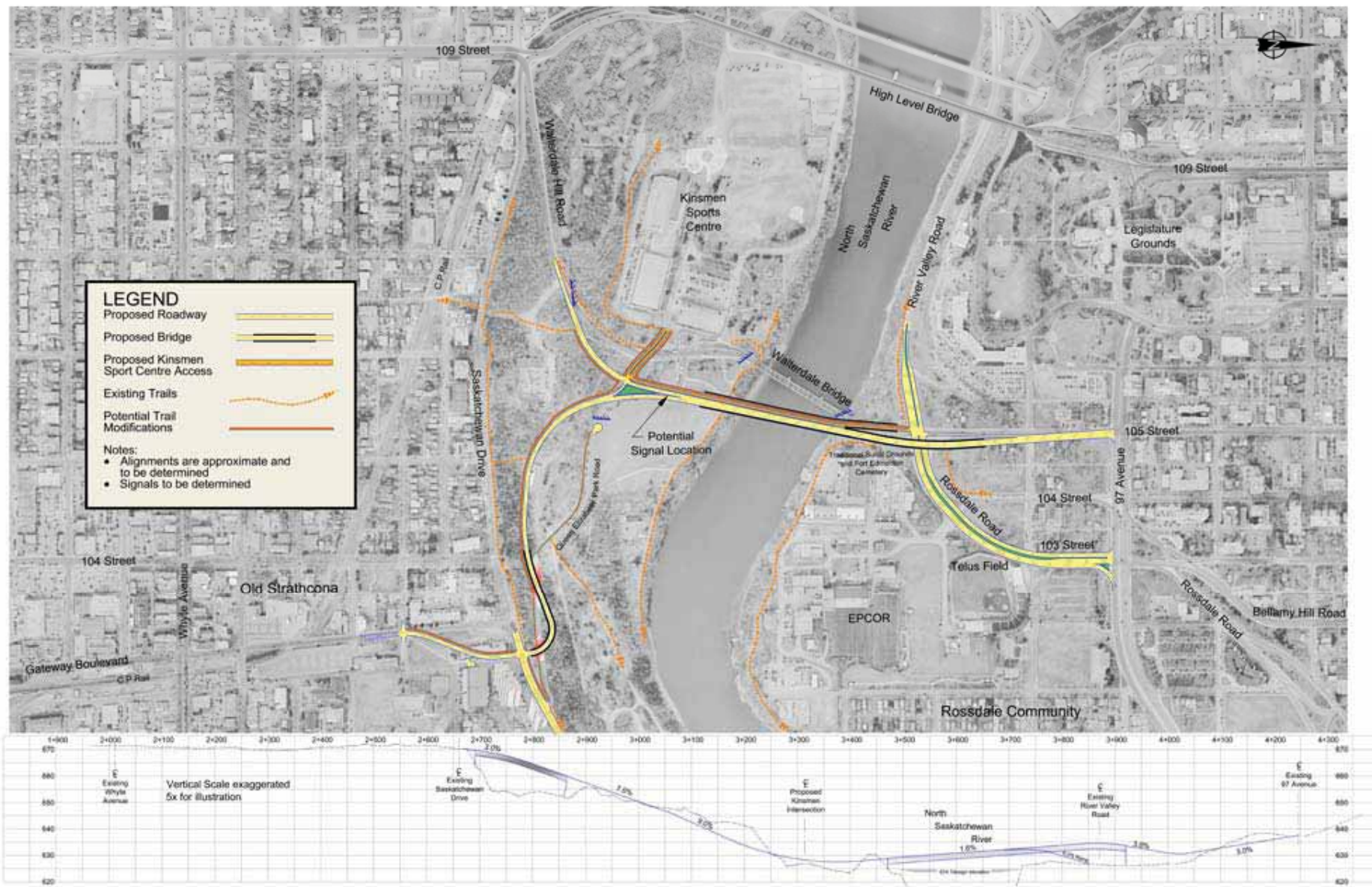


OPTION 1

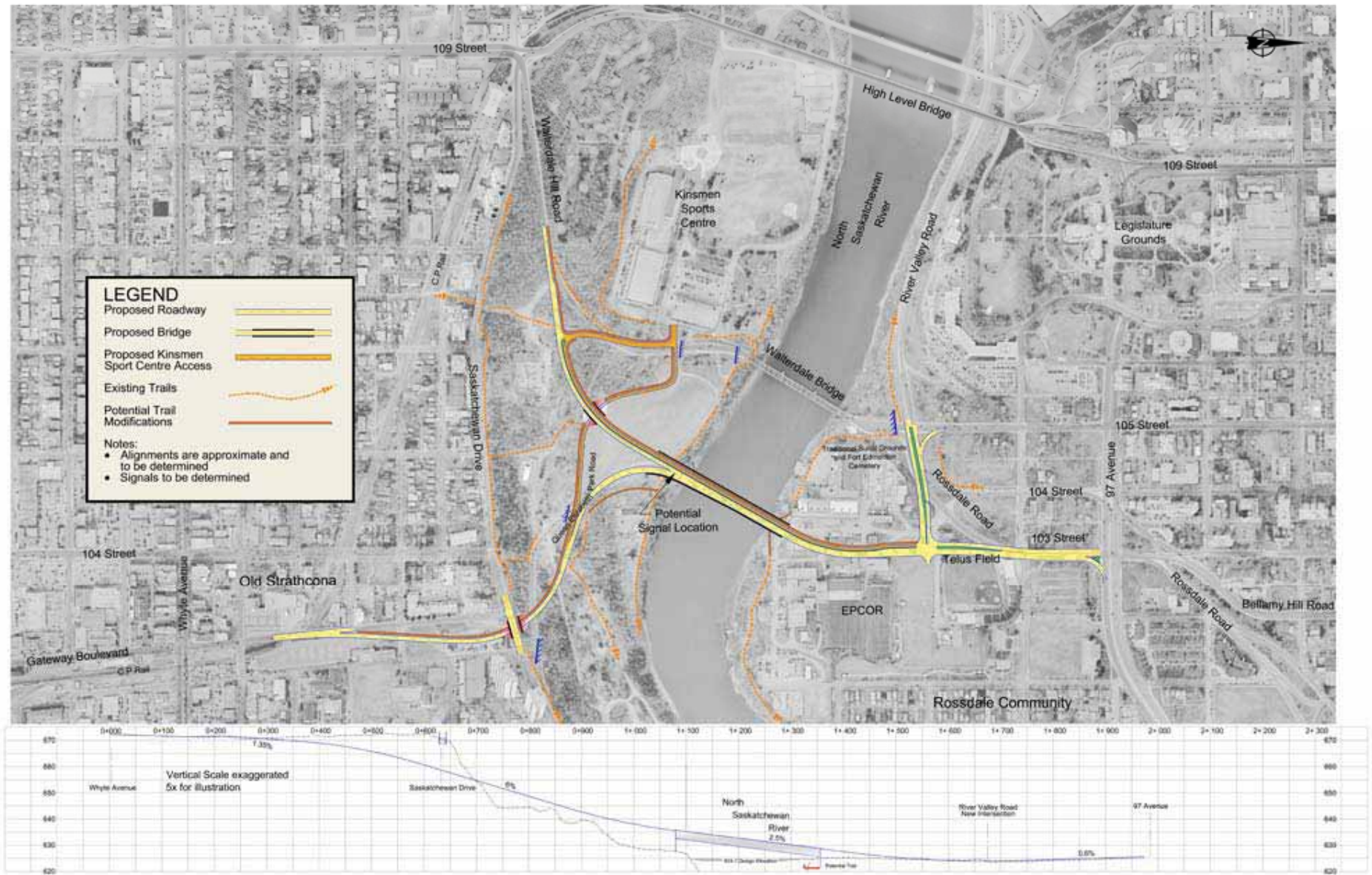
November 11, 2016 211300012001_WalldaleBogard_CommunityArea03_DraftOptions Open House Trailways Exhibit 13/079 Plan 2 Proposed Map



OPTION 2



OPTION 3



OPTION 4

A Signature Bridge...

www.edmonton.ca/RoadPlans

- **Point of pride**
 - Entrance to downtown
 - Touch the water
- **Examples**
 - High Level Bridge, Edmonton
 - Brooklyn Bridge, New York
 - Lion's Gate Bridge, Vancouver



Le Pont du Gard,
near Nimes, France
from Roman times





Bridge Requirements

www.edmonton.ca/RoadPlans

- River crossing
 - Vehicular traffic
 - Pedestrians
 - Cyclists
- Respect
 - Existing bridge heritage
 - History of site
 - Legislature grounds
 - Adjacent neighborhoods
 - Environment
- Legacy
- Residents and tourists
- 1% for public art



Exhibits

www.edmonton.ca/RoadPlans

- Precedents
- Section through river valley
- **Bridge types**
 - Girder
 - Arch
 - Extradosed
 - Cable-stayed



Girder

www.edmonton.ca/RoadPlans



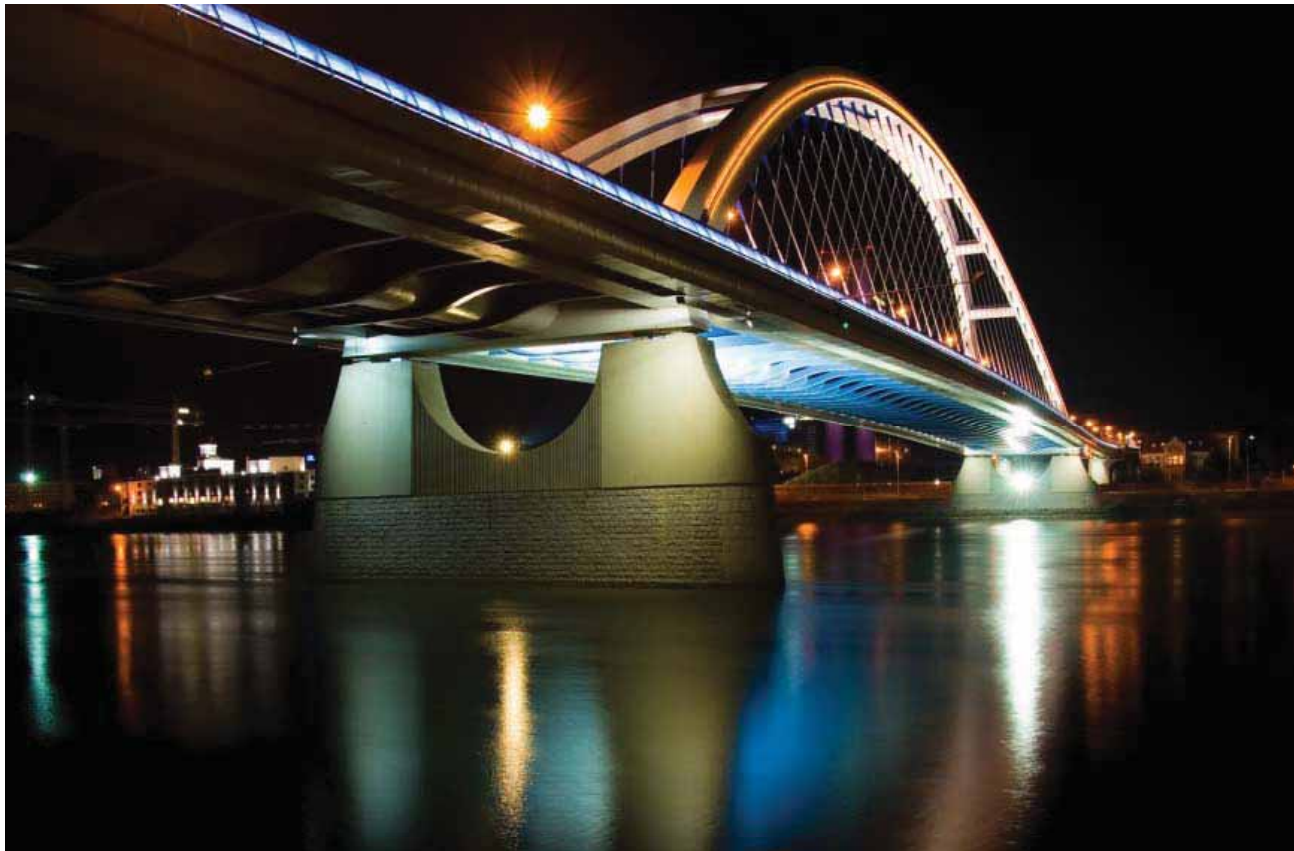
New I-35W Bridge
Minneapolis, Minnesota

November 18, 2010
Slide 18



Arch

www.edmonton.ca/RoadPlans



Apollo Bridge,
Slovakia

November 18, 2010
Slide 19

THE CITY OF
Edmonton

Extradosed

www.edmonton.ca/RoadPlans



Golden
Ears Bridge,
Vancouver

November 18, 2010
Slide 20

Cable-stayed

www.edmonton.ca/RoadPlans



Photo by jar0d



Photo by zoetnet

Erasmus Bridge,
Rotterdam, Holland

November 18, 2010
Slide 21

THE CITY OF
Edmonton

Pedestrians and Cyclists

www.edmonton.ca/RoadPlans

- Safety
- Connection
- Integration with trails
- Experience not speed



Alameda Bridge
Valencia, Spain



Next Steps

www.edmonton.ca/RoadPlans

Project Timelines

Interim Plan Goes to Transportation and Public Works Committee

January 2011

Public Information Session

February/March 2011

Recommended Final Plan and Project Completion

April 2011

Plan Goes to Council

April 2011



What Do You Think?

www.edmonton.ca/RoadPlans

How do these options impact:

- Your use of the area as a motorist, transit user, resident, visitor, cyclist, and/or pedestrian;
- Neighbourhood and community access; and,
- Use and enjoyment of the River Valley and its parks and facilities.



Q & A

www.edmonton.ca/RoadPlans

To ensure everyone has a chance to be heard:

- Each speaker will have **2 minutes** for their question or comment. **1 minute** is allowed for **1 follow-up** question.
- **3 people** may ask questions in each round. They will be given microphones.
- There will be **3 rounds** of questions.
- Additional questions from same person not recognized until no new participants are wanting to ask questions.
- Please use microphones, as this session is being recorded.



Closing

www.edmonton.ca/RoadPlans

- Thank you for attending.
- Please visit the display area to view the alternatives and speak with project team members.
- Please fill out comment forms.