

1

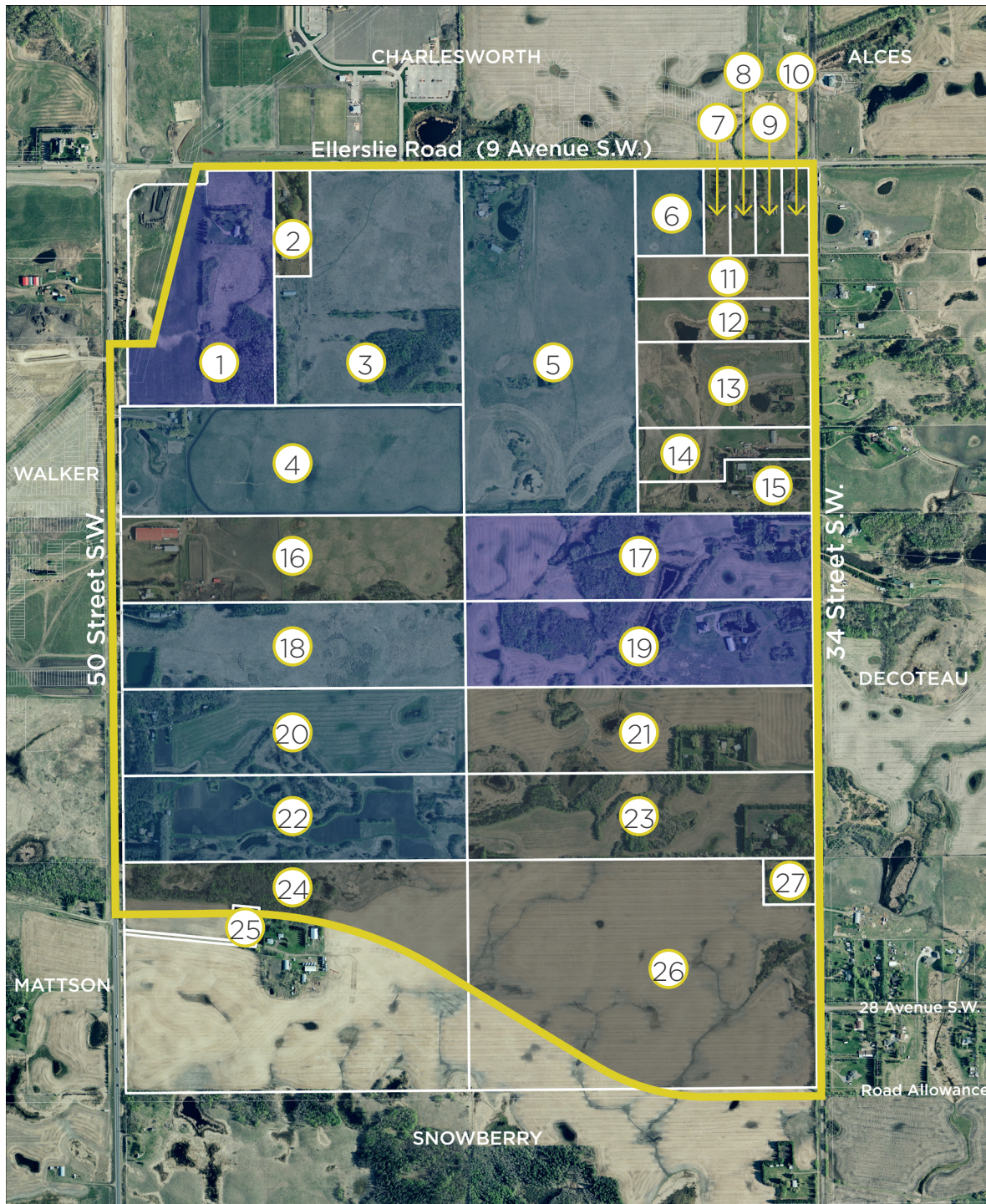
FIGURE  
LOCATION



SITE CONTEXT

- City Boundary
- Meltwater NSP
- North Saskatchewan River
- River Valley





2

## FIGURE OWNERSHIP



SITE CONTEXT

- Private
- Proponent
- City of Edmonton

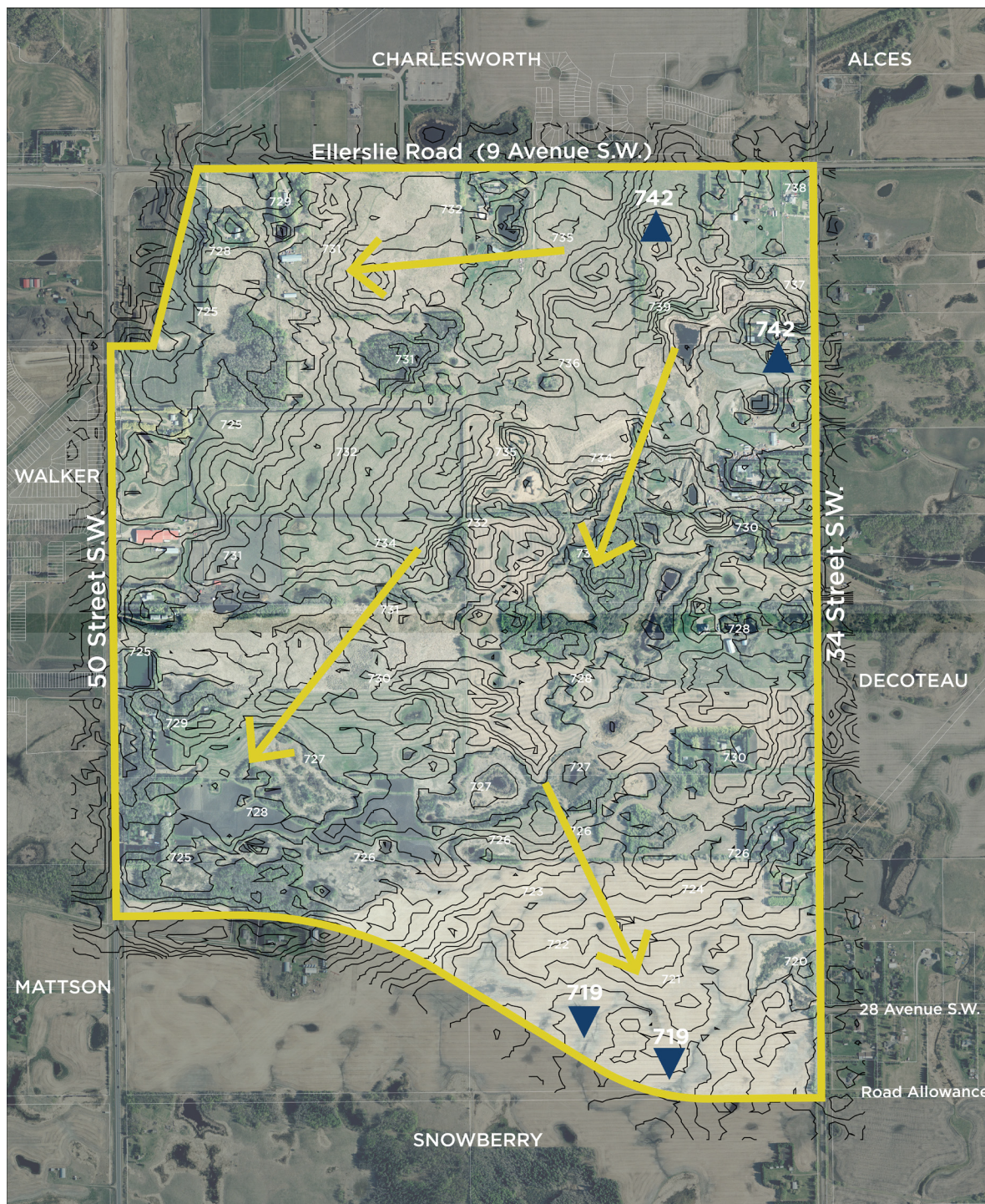


# 3

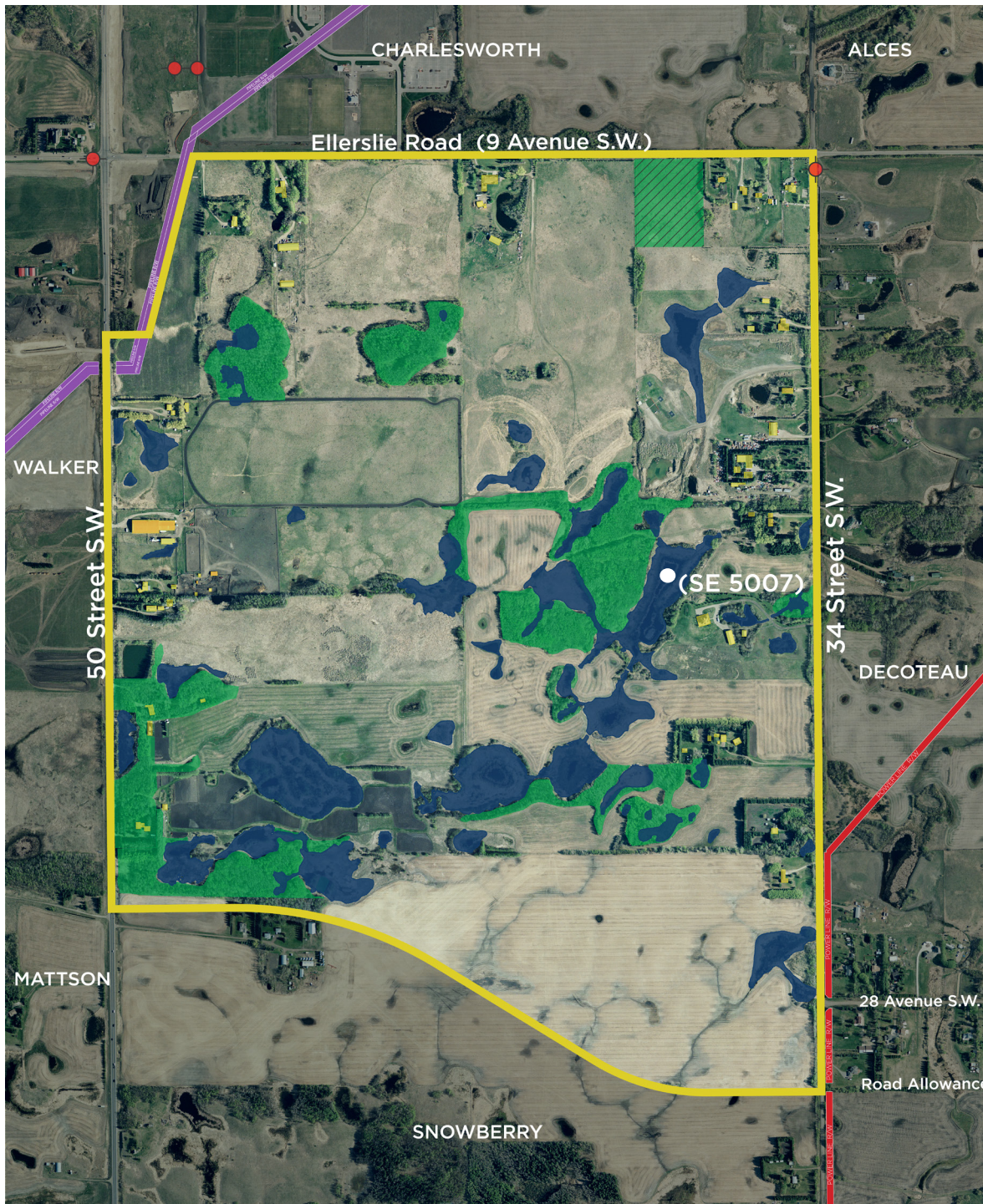
## FIGURE EXISTING TOPOGRAPHY



- ▲ High Point
- ▼ Low Point
- Flow Direction
- ≡ Contour Interval 1.0 m







4

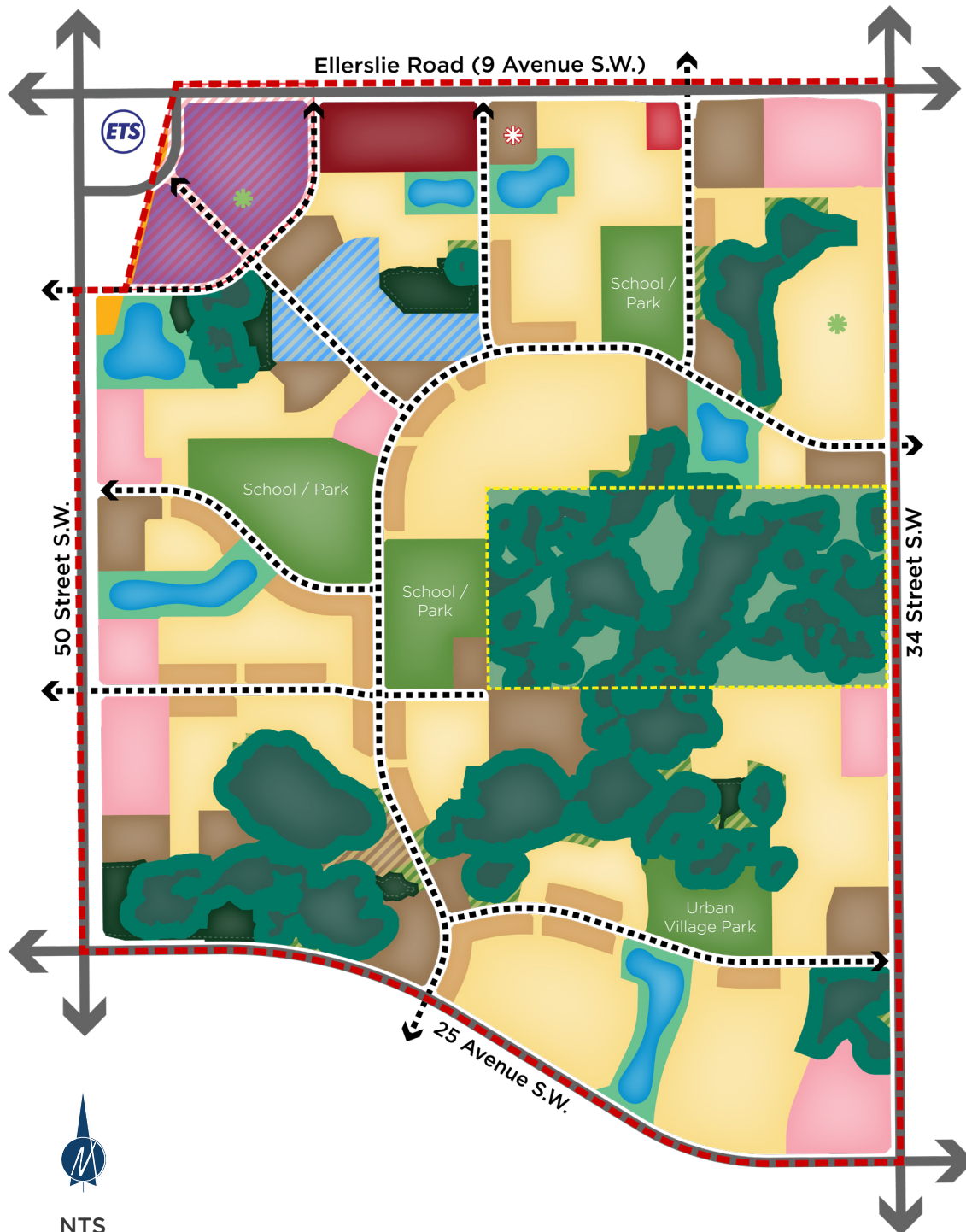
## FIGURE SITE FEATURES



SITE CONTEXT

- Existing Structure
- Existing Municipal Reserve
- Natural Area
- Wetland
- Pipeline R/W
- Powerline R/W
- Abandoned Wellhead
- (SE XXXX) Environmental Significant Area





5

## FIGURE LAND USE CONCEPT

LAND USE

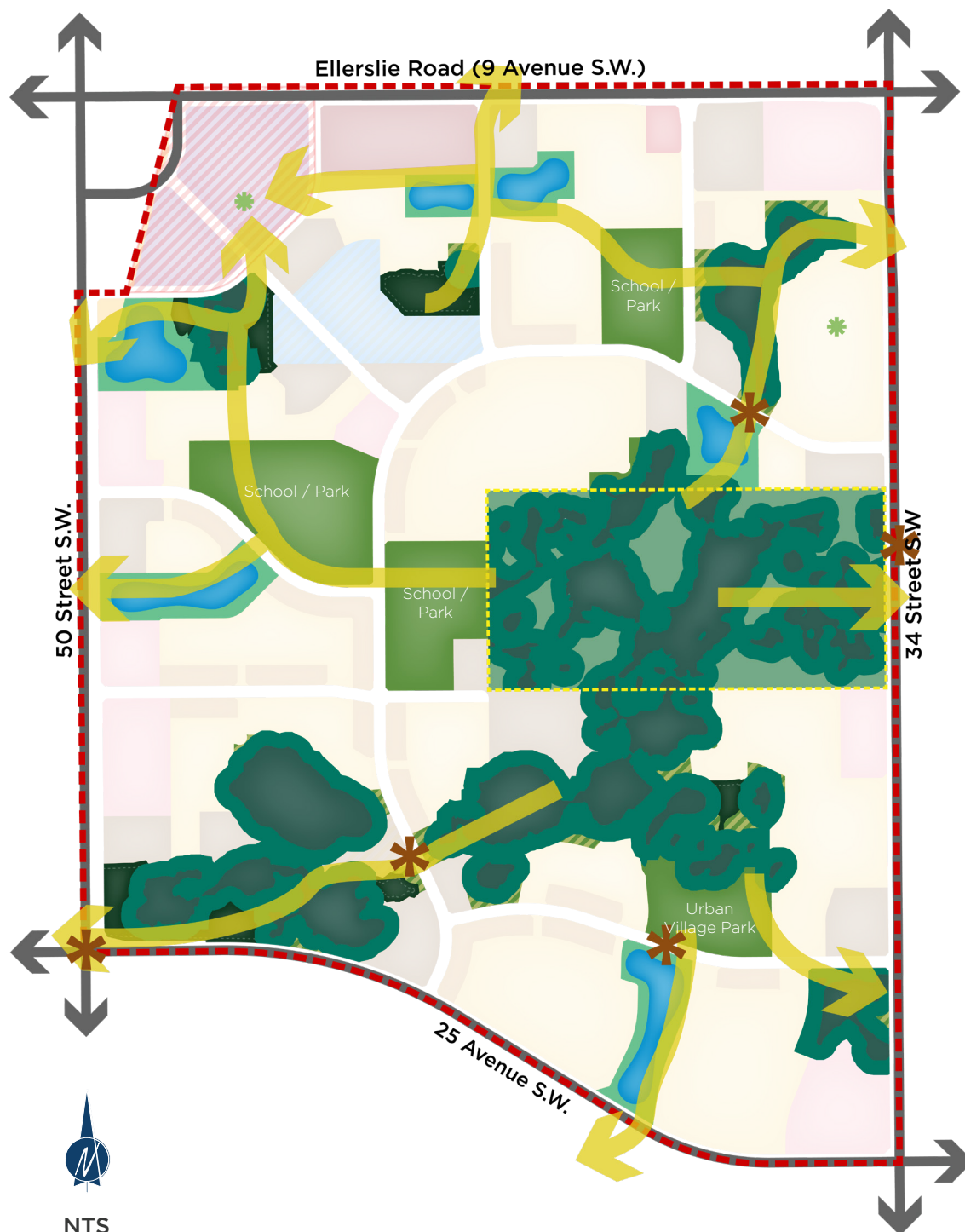
- NSP Boundary
- Future Transit Centre / Park & Ride
- Low Density Residential
- Street-Oriented Residential
- Medium Density Residential
- Potential Development Area (MDR)
- Town Centre Mixed Use
- Mixed Use
- Community Commercial
- Neighbourhood Commercial
- Stormwater Management Facility
- Institutional / Residential Mixed Use
- Parkland (non-MR)
- School / Park (MR)
- Pocket Park (MR)
- Natural Area (MR)
- Natural Area (ER)
- Natural Area (ER) to be determined\*
- Pipeline R/W
- City Owned Lands
- Non ER on City Owned Parcels
- Arterial Roadway
- Collector Roadway
- Special Study Area
- Civic Use

\*Buffer to be determined through SSNAMP



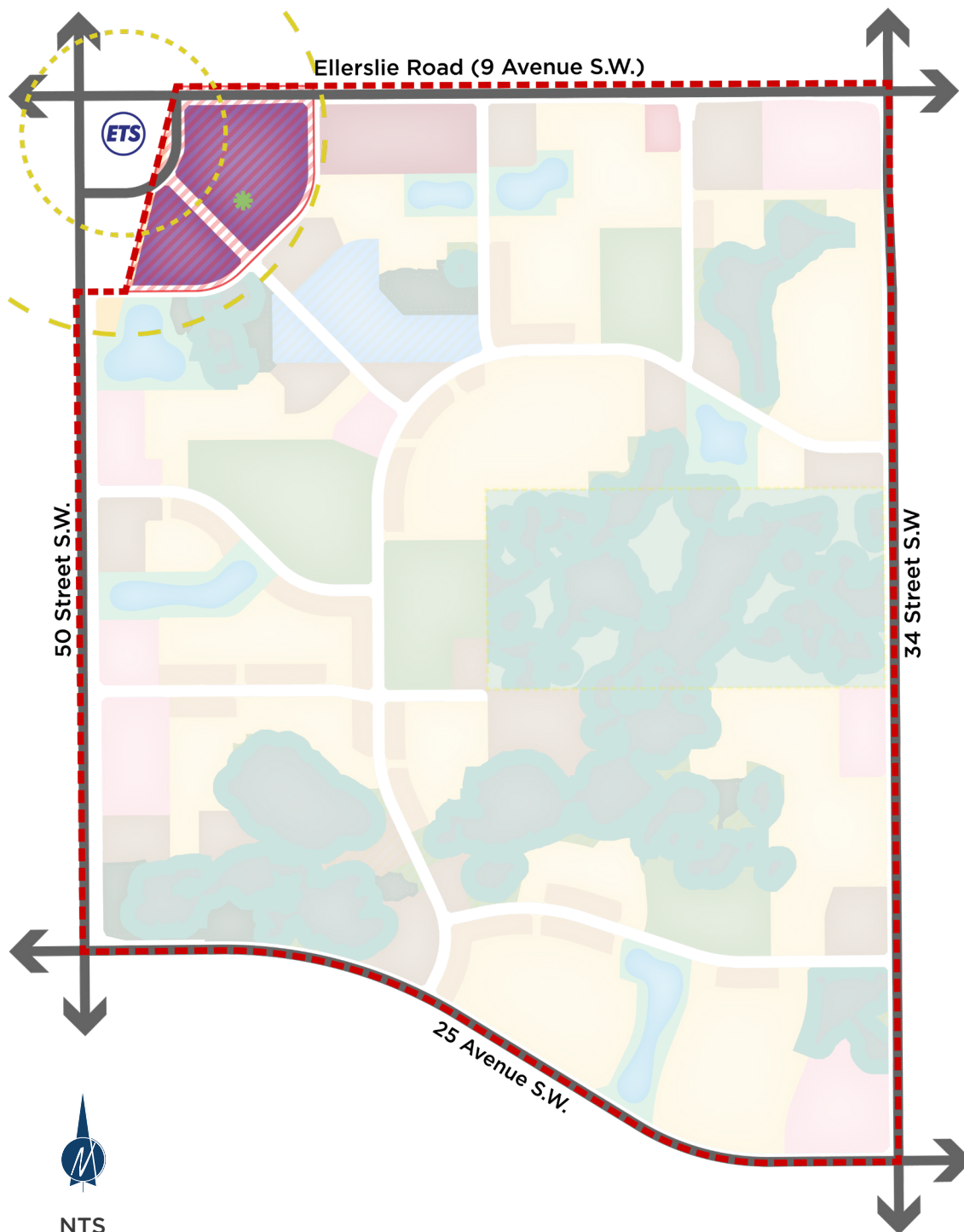
6

# FIGURE GREEN NETWORK



\*Buffer to be determined through SSNAMP





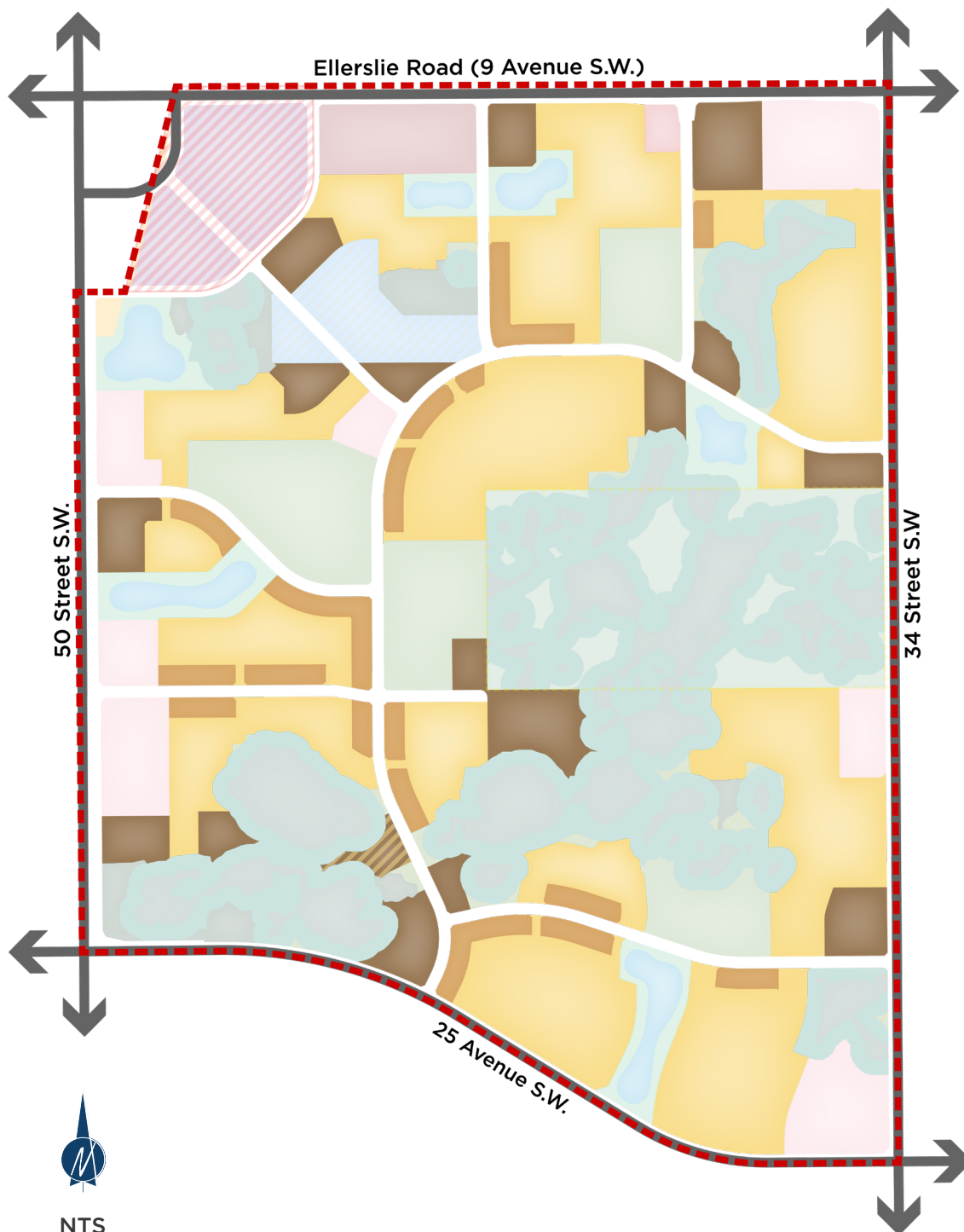
7

## FIGURE TOWN CENTRE MIXED USE

LAND USE

- NSP Boundary
- Future Transit Centre / Park & Ride
- Town Centre Mixed Use
- Special Study Area
- Pocket Park (MR)
- 200m Radius
- 400m Radius
- Arterial Roadway





8

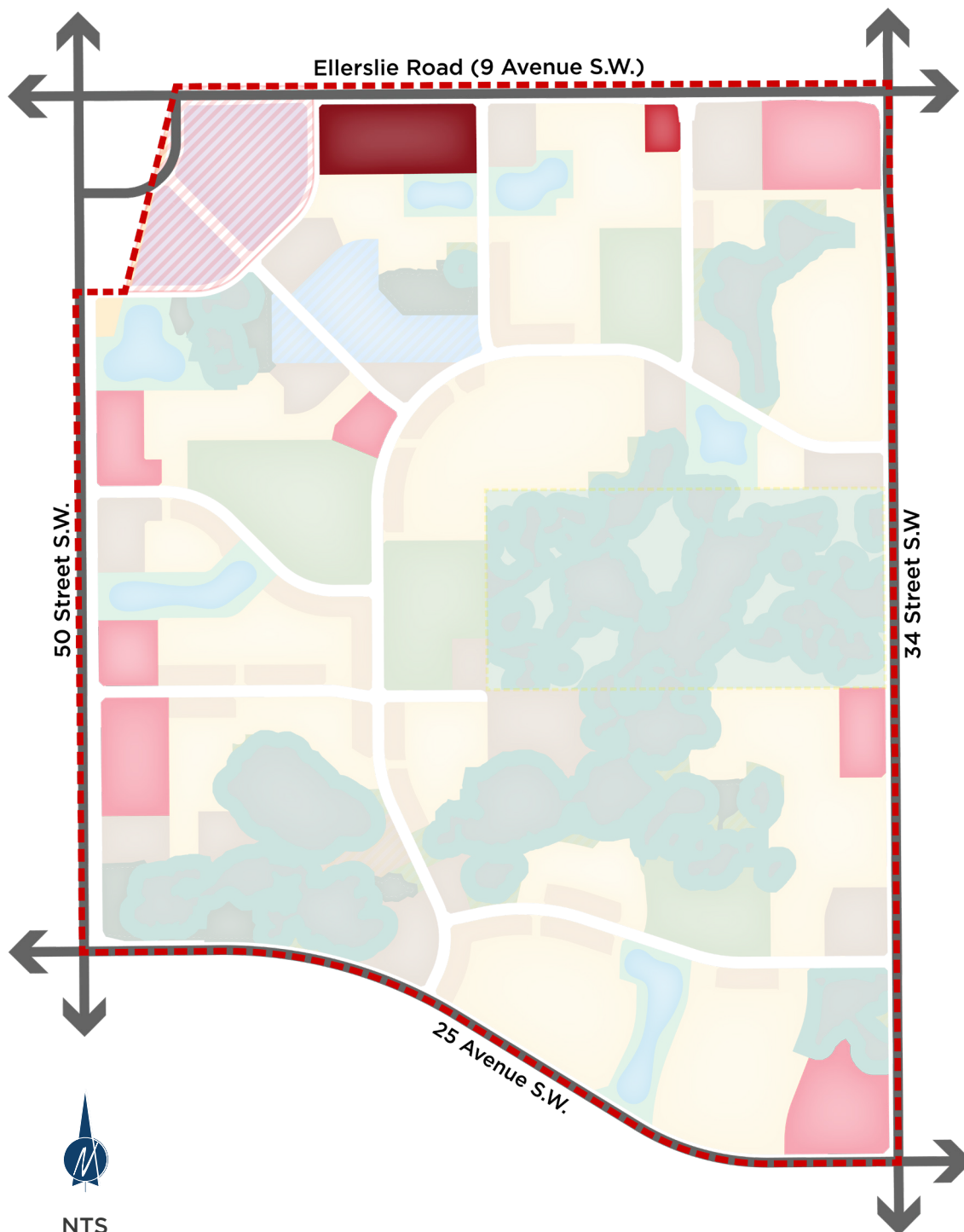
FIGURE

RESIDENTIAL USES

LAND USE

- NSP Boundary
- Low Density Residential
- Street-Oriented Residential
- Medium Density Residential
- Potential Development Area (MDR)
- Arterial Roadway








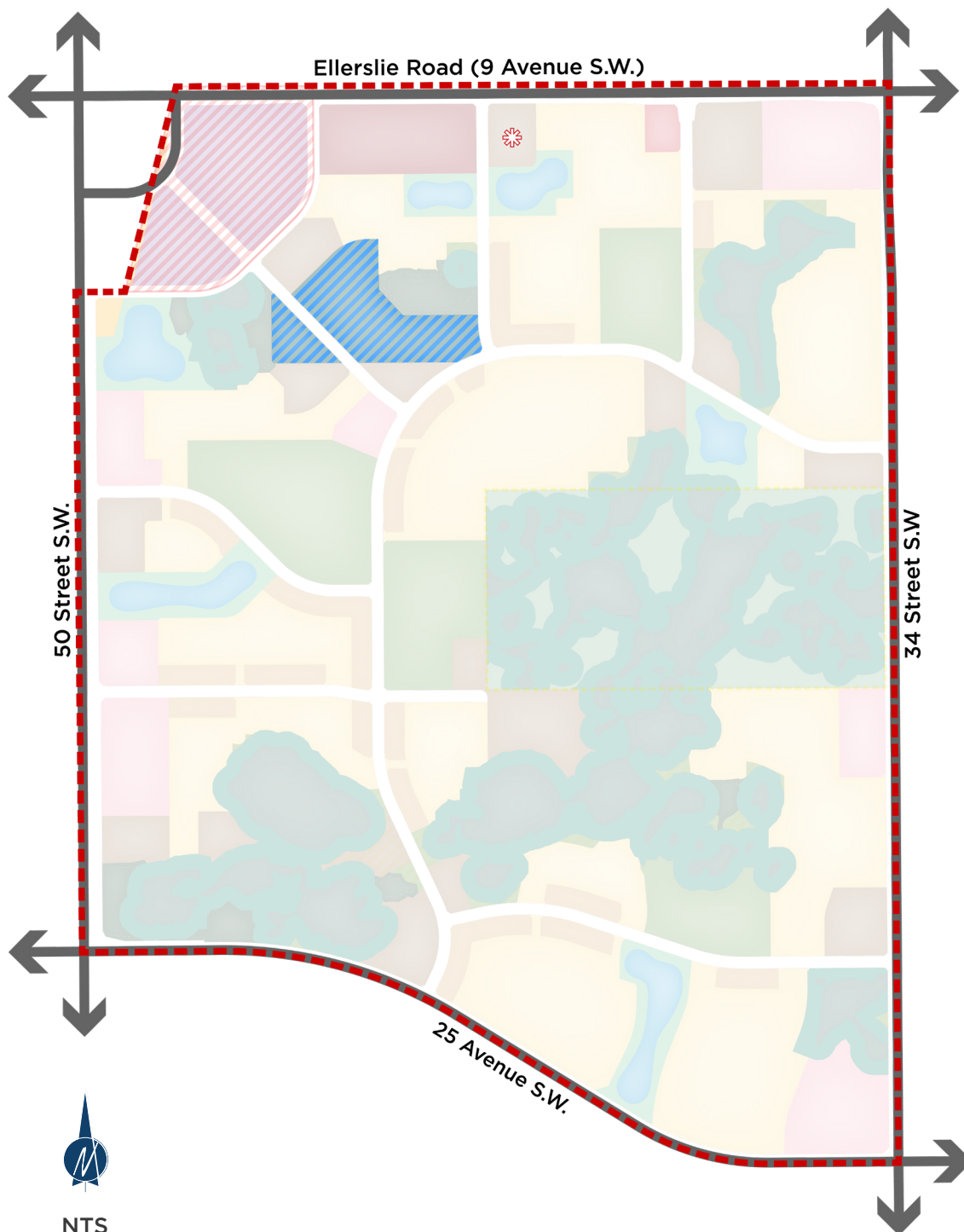


9

## FIGURE COMMERCIAL USES AND MIXED USE

LAND USE





-  NSP Boundary
-  Mixed Use
-  Community Commercial
-  Neighbourhood Commercial
-  Arterial Roadway



10

**FIGURE**  
**COMMUNITY SERVICES**

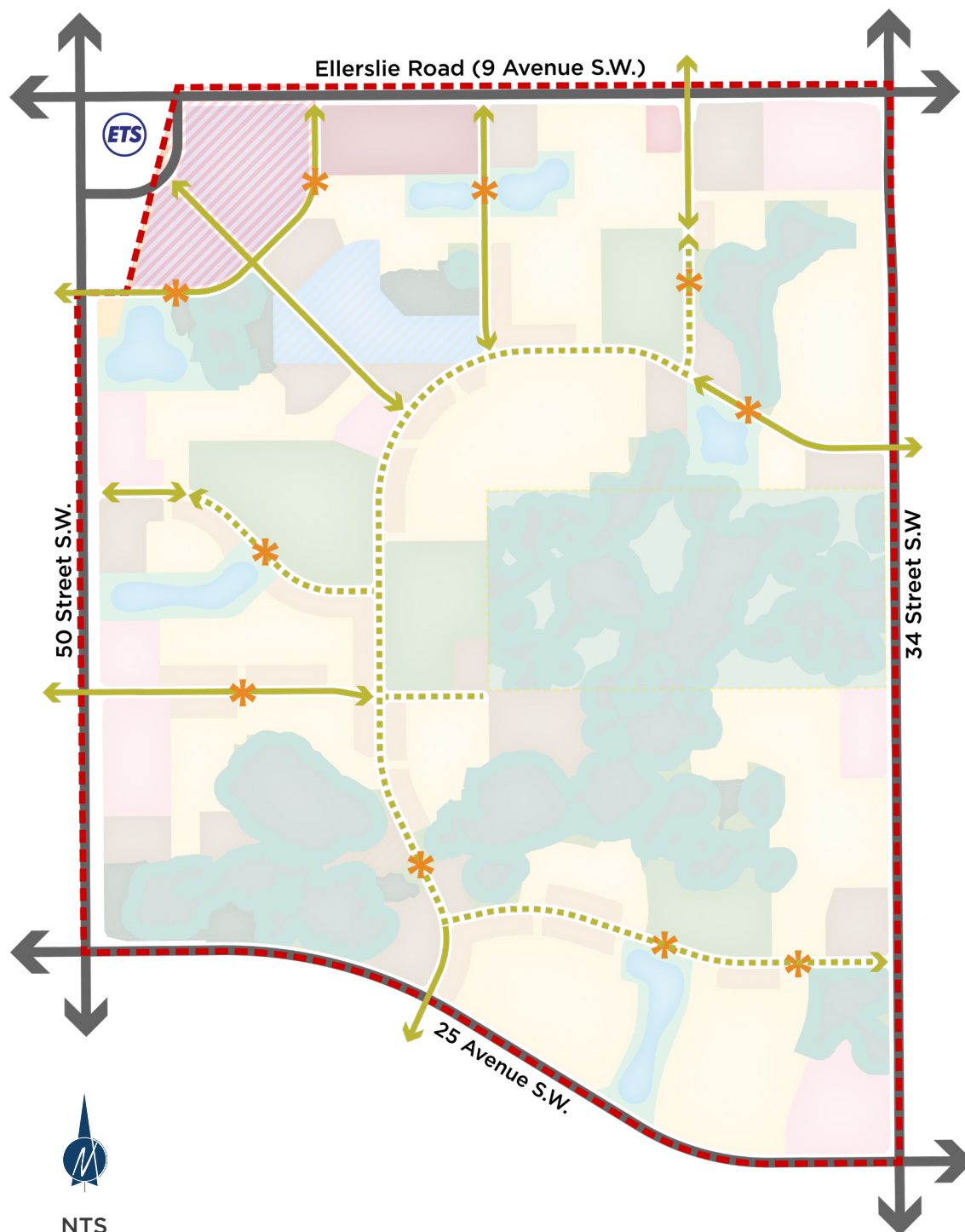
LAND USE

-  NSP Boundary
-  Institutional / Residential Mixed Use
-  Arterial Roadway
-  Civic Use



# 11

## FIGURE ROADWAY TYPOLOGIES



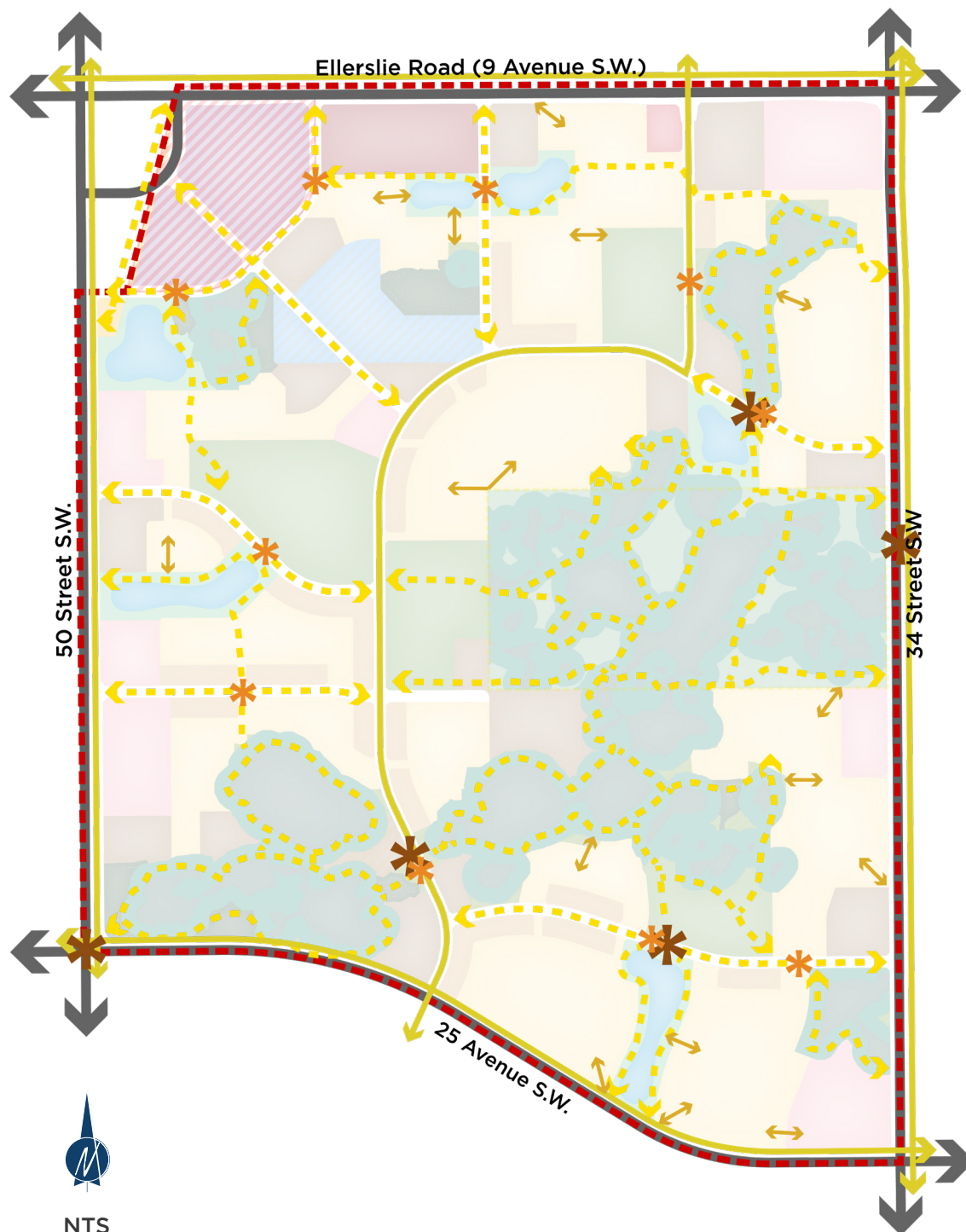
- NSP Boundary
  - Future Transit Centre / Park & Ride
  - Arterial Roadway
  - Collector Roadway\*
  - Mid-Block Crossing
- \*Dashed lines indicate the "Safe Routes to School"



NTS

# 12

## FIGURE ACTIVE MODES NETWORK



- - - NSP Boundary
- Arterial Roadway
- - - Active Modes Network\*
- Active Modes Linkages
- Shared Use Path
- \* Mid-block Crossing
- \* Wildlife Mitigation Passage

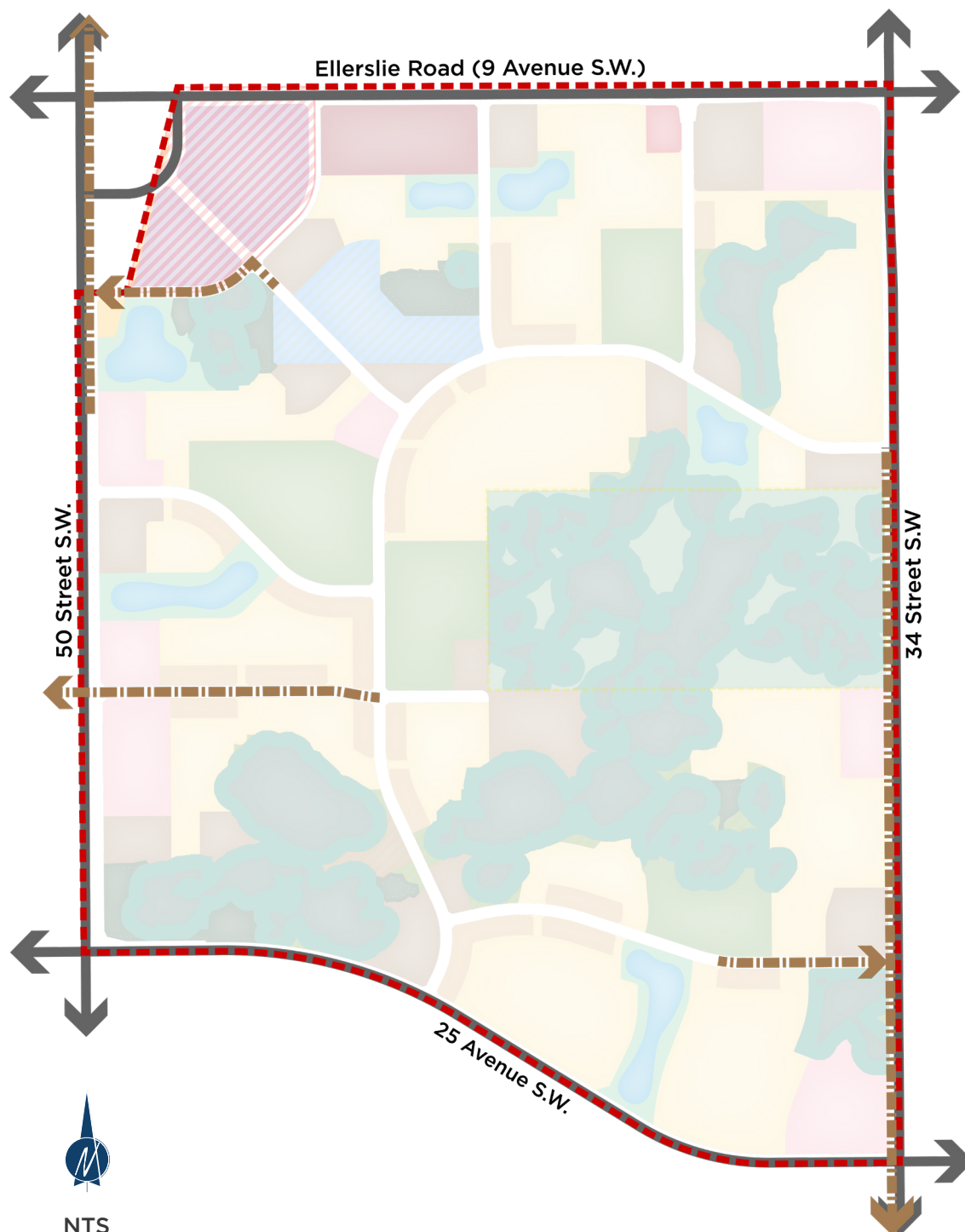
*\*Active Modes Network through Natural Areas is conceptual*



# 13

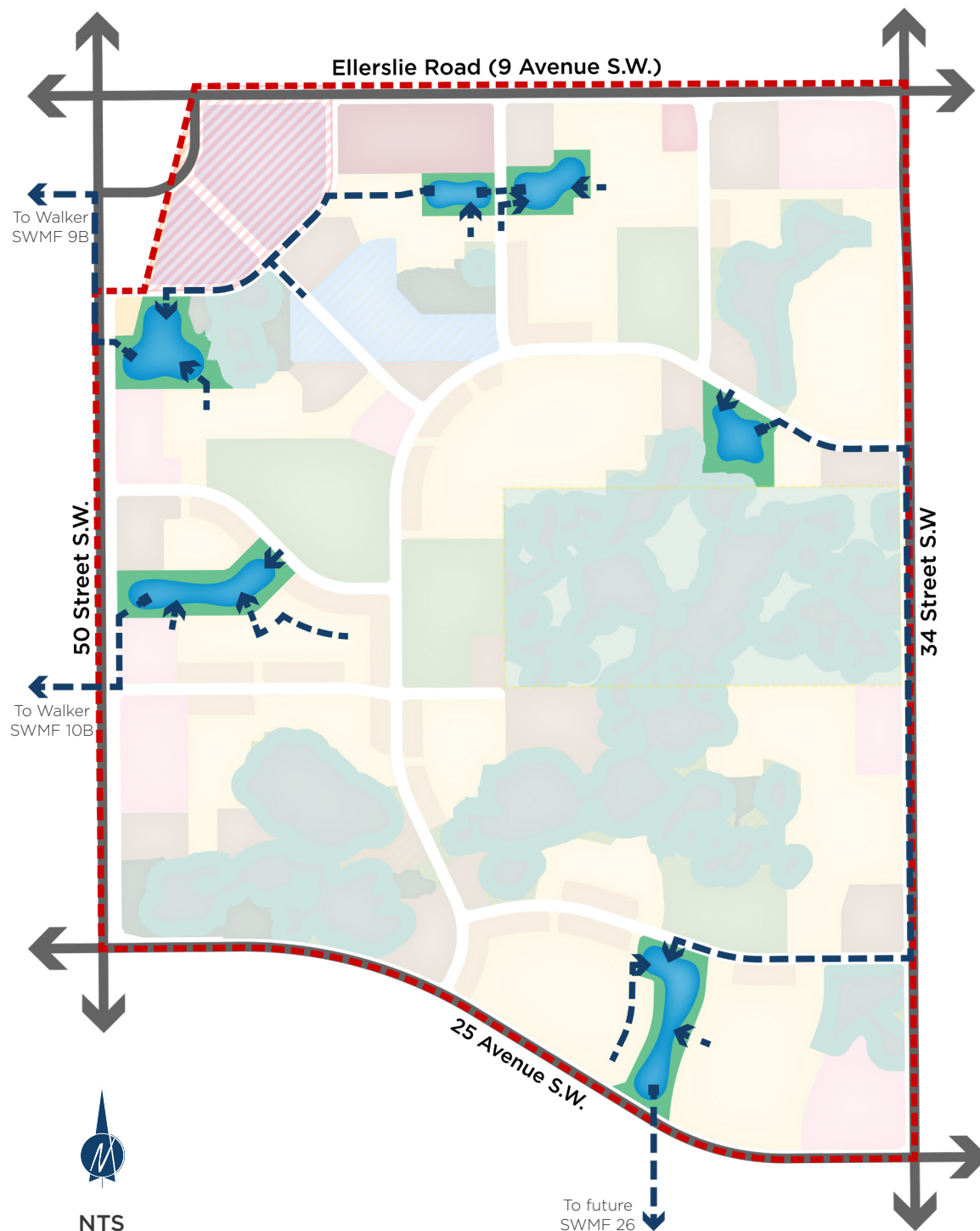
## FIGURE SANITARY SERVICING

- NSP Boundary
- Arterial Roadway
- Sanitary Trunk



14

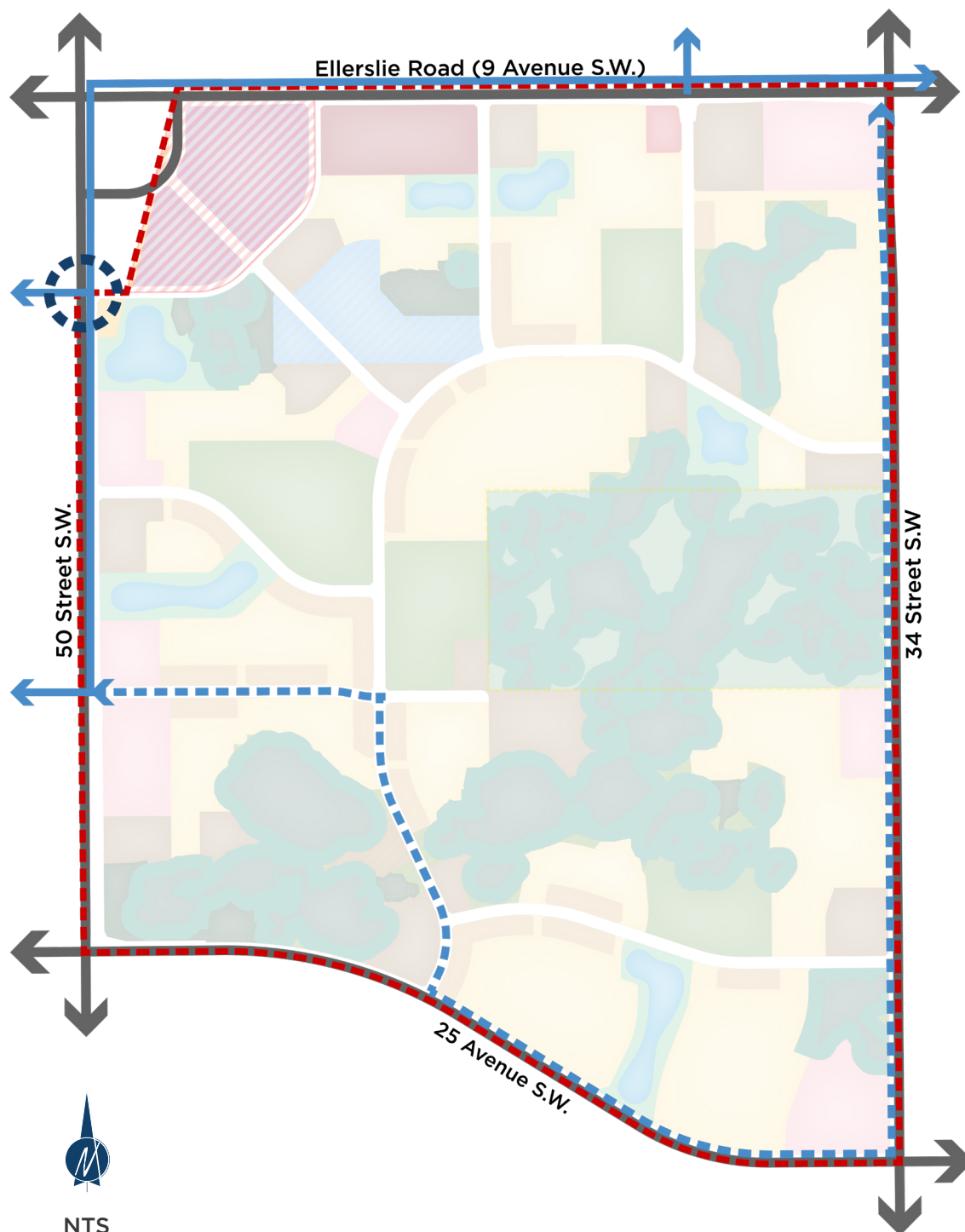
# FIGURE STORMWATER SERVICING



- - - NSP Boundary
- Arterial Roadway
- - - Inlet
- - - Outlet
- Stormwater Management Facility





15

**FIGURE**  
**WATER SERVICING**

- NSP Boundary
- Arterial Roadway
- Existing Water Main
- Future Water Main
- Potential Future Booster Pump Station

# 16

## FIGURE STAGING

-  NSP Boundary
-  Arterial Roadway
-  General Direction of Development

