

About the Project

Project Background

Dermott District Park (formerly Bonnie Doon Campus Park) is located along 83 Street and 90 Avenue, adjacent to Vimy Ridge Academy, Bonnie Doon Leisure Centre and the future Valley Line LRT. As a district park, the anticipated yearly number of park users totals approximately 40,000 to 80,000 people.

As part of the City's District Park Renewal Program, Dermott District Park was prioritized as a site requiring a new master plan to direct modifications and improvements to the site. In 2014, a Master Plan was created for the park in order to guide the upgrades needed to improve park usage and site conditions.

The Master Plan was approved by Community Services Department in 2014 and the project is currently moving into preliminary design, detailed design and construction. The project construction is anticipated to begin during 2016 and 2017.

Public Consultation

- Fall 2013: Phone Survey
- Sept/Oct 2013: Online Survey
- Sept 2013: Public Information Session
- March 2014: Stakeholder Workshop
- April 2014: Public Open House and Online Survey
- September 2015: Play Space Open House

Concept Plan

The following image shows the Master Plan Concept that was developed during the conceptual design phase of the project in July 2014. The Preliminary Plan that you are reviewing today is based on this high level design.



About the Project

Coordinated Development

The following outlines construction projects that will affect the Dermott District Park Renewal Project. Our project team is currently coordinating design work and construction phasing with each of these projects:

- **Valley Line LRT:** The Valley Line LRT is currently in detailed design stage and the construction schedule for this portion of the LRT is unknown though it will occur prior to 2020. The new intersection, crosswalks and entrance into the park site from 83 Street will be constructed as part of the LRT project.
- **Vimy Ridge Academy Building Upgrades:** Vimy Ridge Academy is currently undergoing a extensive modernization project that will extend into 2017. Though there are some exterior improvements, the majority of upgrades are occurring within the building.
- **Bonnie Doon Leisure Centre Upgrades:** The Leisure Centre will be undergoing building renovations starting this fall. During this time, the Leisure Centre will be closed to public access.
- **Idylwyde Community League:** The park space around the Idylwyde Community Hall was included in the conceptual design for the Dermott District Park Master Plan. Currently, the design and construction of site improvements is being conducted as a separate project.

Where We Are Today

The preliminary plan you are reviewing this evening, is a result of the Dermott District Park Master Plan, which was reviewed by the public during the April 2014 and subsequently funded by City Council in 2015.

The Master Plan concept included two phases of design - one without a twin arena and one with a twin area. At this time the twin arena is not funded, therefore the concept plan without the arena is moving forward. This does not mean that City Council will not fund the twin arena in the future. To accommodate this possibility, special attention has been paid to creating an adaptable site that can accommodate an arena with minimal challenges.

Today's Consultation Focus

Because the Preliminary Plan is based on extensive public consultation during conceptual design, we are not looking for high level feedback on the arrangement of site elements. Instead, we are looking for your ideas on solving specific challenges within the current design. By focusing on the details, we will be able to improve upon an already solid design.

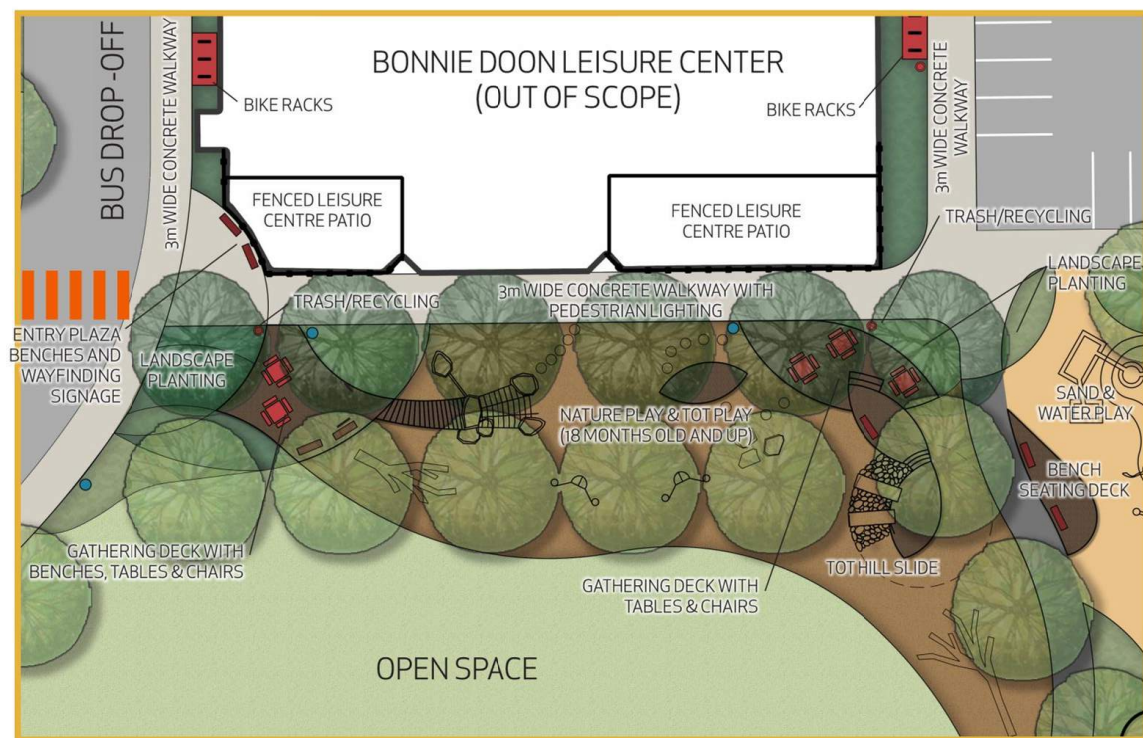
Existing Conditions Plan

EXISTING SITE ELEMENTS:

- MULTI-USE SPORTS FIELD (210' x 330') AND SHALE TRACK
- 180' x 300' SOCCER FIELD
- 100' x 180' SOCCER FIELD
- TENNIS BUILDING (CURRENTLY CLOSED)
- PLAYGROUND
- FOUR TENNIS COURTS (EAST/WEST ORIENTATION)
- TWO TEMPORARY GRAVEL PARKING LOT



Preliminary Design Plan



SCALE 1:500
NORTH

ENLARGEMENT



LEGEND

- NEW TREES
- EXISTING TREES
- LANDSCAPE PLANTING AREA
- OPEN LAWN SPACE
- EXISTING BUILDINGS
- 3m WIDE ASPHALT TRAIL
- CONCRETE SIDEWALK
- 1.5m COMPACTED GRANULAR TRAIL
- BENCHES
- PICNIC TABLES
- BIKE RACKS
- TRASH / RECYCLE RECEPTACLE
- LIGHT STANDARD
- CROSSWALKS

NORTH
0 40m
TO BONNIE DOON LRT STOP

Movement

CHALLENGE:

The main access into the park site for vehicles and pedestrians is from 83 Street into the new parking lot. Because the parking lot and access driveway are located at the back of the building it may be difficult for people to find the building entrance or other destinations on site.

HOW WE ARE ADDRESSING THE CHALLENGE

We have added wide sidewalks around the building and to important destinations in the park. We have added an entry node at the main walkway to highlight the key pedestrian route. We will include wayfinding signage to help people find the right route to destinations.

OUR QUESTIONS FOR YOU

- Are there ways to help people who enter from the west parking lot know where the front of Leisure Centre or other site destinations are?
- Are there interesting features or amenities that would make the walk around to the front entrance enjoyable?
- Are there any additional suggestions or comments you have about movement?

LEGEND

-  NEW TREES
-  EXISTING TREES
-  LANDSCAPE PLANTING AREA
-  OPEN LAWN SPACE
-  EXISTING BUILDINGS
-  3m WIDE ASPHALT TRAIL
-  CONCRETE SIDEWALK
-  1.5m COMPACTED GRANULAR TRAIL
-  BENCHES
-  PICNIC TABLES
-  BIKE RACKS
-  TRASH / RECYCLE RECEPTACLE
-  LIGHT STANDARD
-  CROSSWALKS



SCALE 1:500


Physical Recreation

CHALLENGE

The existing running track needs to be removed because of LRT construction. Cycling, running and walking are important activities on site.

HOW WE ARE ADDRESSING THE CHALLENGE

A trail loop (approximately 400m) surrounds the open space and playground area. The trail design includes, distance markers, benches and gravity-based (bodyweight) fitness elements. Fitness elements will be focused on using low-key elements (i.e. chin-up bars, dip bars, etc) and will have small signs that indicate the type of exercises that can be performed in each location.

OUR QUESTIONS FOR YOU

- The trail materials and widths vary (see plan). Are the materials and width appropriate for the trail use?
- Are the features included in the trail design (distance markers, benches, fitness elements) appropriate and in the right locations?
- Are there additional features along the trail that would create an enjoyable experience when using the trail?
- Are there any additional suggestions or comments you have about supporting physical recreation?



Examples of gravity-based (bodyweight) fitness elements

Inclusiveness

CHALLENGE

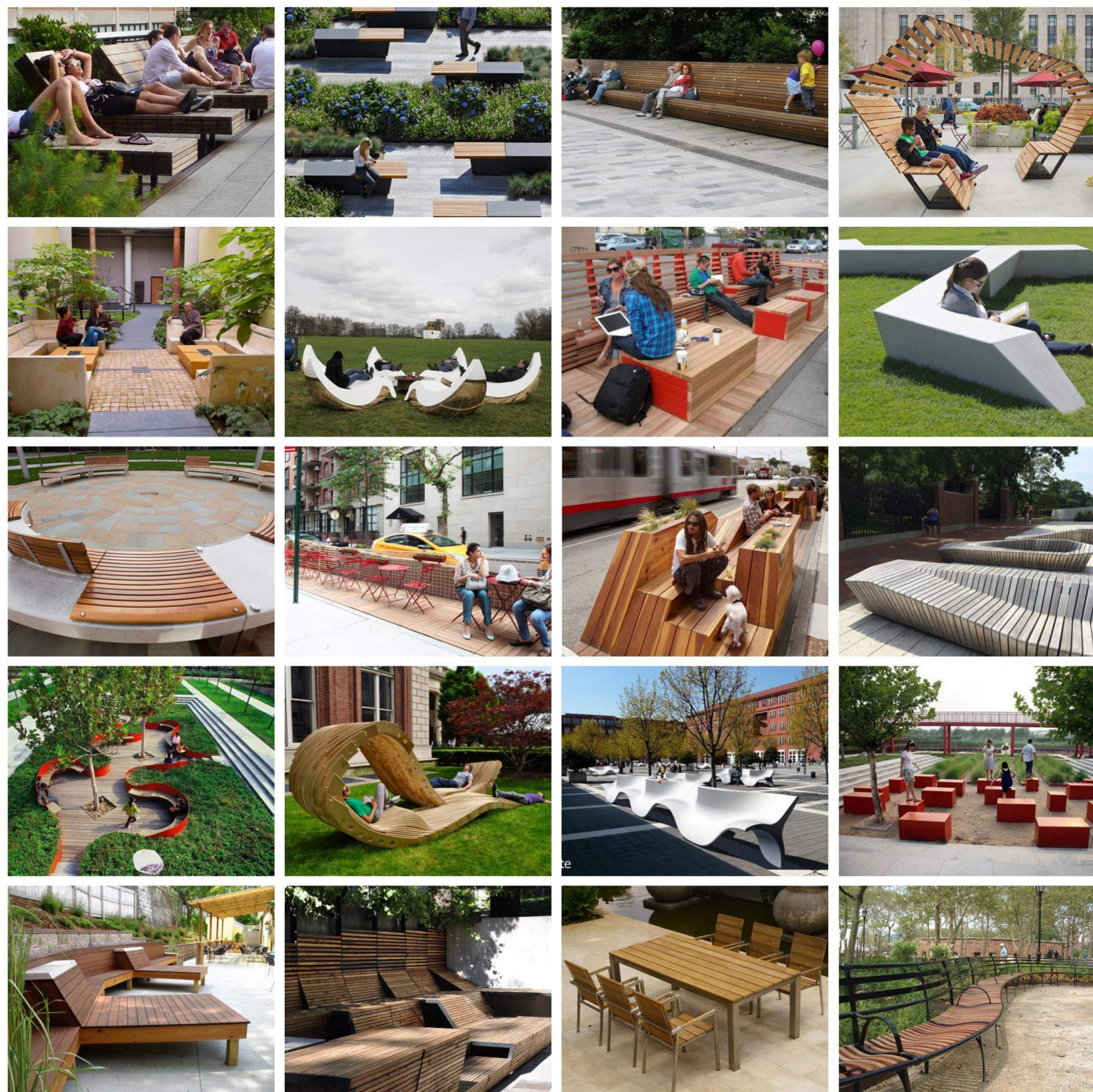
Public parks are intended for the use and enjoyment of all people, regardless of age, race, gender, or ability. The park design should provide places where different types of people can interact, whether it is a casual conversation with someone you just met or it is a planned activity with people from the community.

HOW WE ARE ADDRESSING THE CHALLENGE

We have included a range of different types of seating and gathering spaces (i.e. picnic sites, lounging decks, bench nodes) that are located throughout the site. Each gathering space offers a different type of experience and encourages different types of interaction.

OUR QUESTIONS FOR YOU

- Are there ways that the design of spaces could encourage interaction between different groups of people (i.e. children, seniors, families, disabled people, long-time community residents, new immigrants)?
- Are there places where some groups of people that may not be able to use the park or may not be comfortable with using the park? Can we improve these places?
- Are there any additional suggestions or comments you have about supporting inclusiveness?



Examples of seating/gathering spaces that provide opportunities for different types of interaction.



Winter City

CHALLENGE

In 2012, the City of Edmonton became a leader on the winter city world stage as Edmonton City Council endorsed the Wintercity Strategy for transforming Edmonton into a world-leading winter city. Winter is an important part of our lives in Edmonton, but it is difficult to provide comfortable places for people to go when it's cold outside.

HOW WE ARE ADDRESSING THE CHALLENGE

A warming hut that provides temporary shelter from the elements may be a beneficial addition to the site.

OUR QUESTIONS FOR YOU

- Is there a location on site that makes sense for a warming hut?
- What types of features should it have (i.e. heating, seating)?
- Can you describe what it might look like?
- Are there any additional suggestions or comments you have about supporting the Wintercity Strategy?



Examples of warming huts and shelter elements. Please note that many of the examples shown are temporary structures. If a permanent warming hut is included in the site design, it would be designed to be structurally resilient with high quality, low maintenance materials.

Aesthetics

CHALLENGE

The look and feel of a park is affected by the selection of materials, colors and style of elements. All elements and features in the design need to fit together in terms of aesthetics and need to be high quality, functional and long-lasting.

HOW WE ARE ADDRESSING THE CHALLENGE

The planting and furnishing palettes shown reflect the natural qualities of the adventure play area, nature play area and landscaped open spaces. The two furnishing palettes focus on clean-lined contemporary design and a combination of wood and metal.

OUR QUESTIONS FOR YOU

- Does the combination of aesthetic palettes create an attractive and enjoyable site? Can they be improved?
- Which furnishing palette do you prefer and what are the reasons for your preference?
- Are there any additional suggestions or comments you have about aesthetics proposed for the site?

TREE PLANTING PALETTE

(from top-left: American Elm, Green Ash, Bur Oak, Linden, Blue Spruce, Scot's Pine)



SHRUB AND PERENNIAL PLANTING PALETTE

(clockwise from top-left: Barberry, russian sage, ninebark, lilac, ornamental grasses, trolius, spiraea, false-spiraea, daylily, iris, juniper)



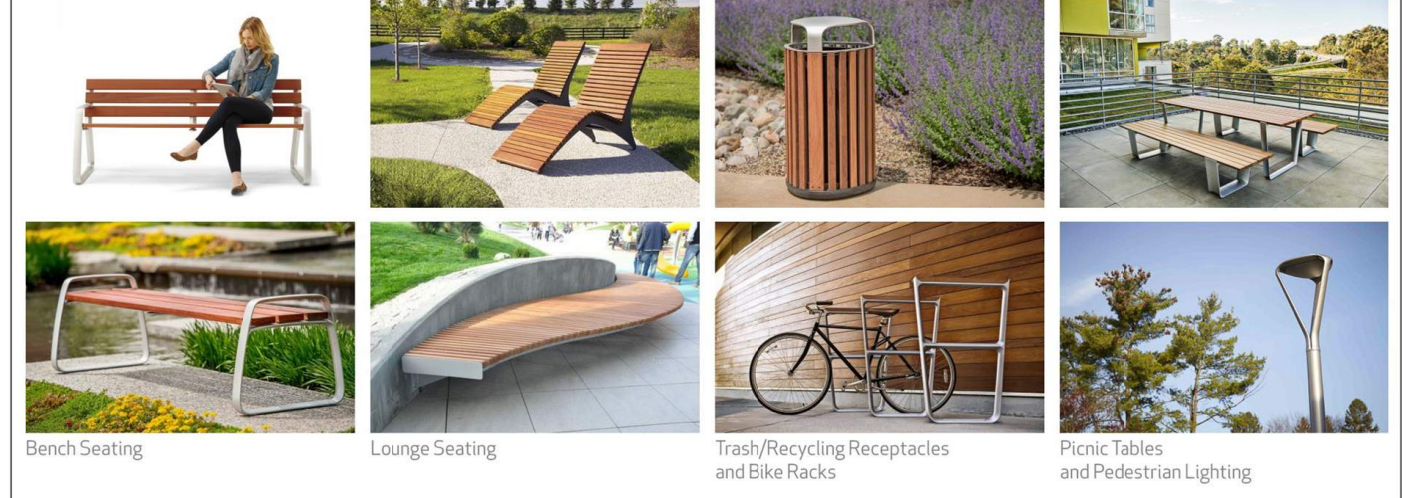
EDIBLE MAZE PLANTING PALETTE

(clockwise from top-left: Saskatoon, chives, thyme, currants, gooseberries, honeyberries, lovage, nanking cherry, valiant grapes, wild rose hips, rhubarb, cranberries)



FURNISHING PALETTE OPTIONS

OPTION 1: Curvey and Light



OPTION 2: Geometric and Blocky

