

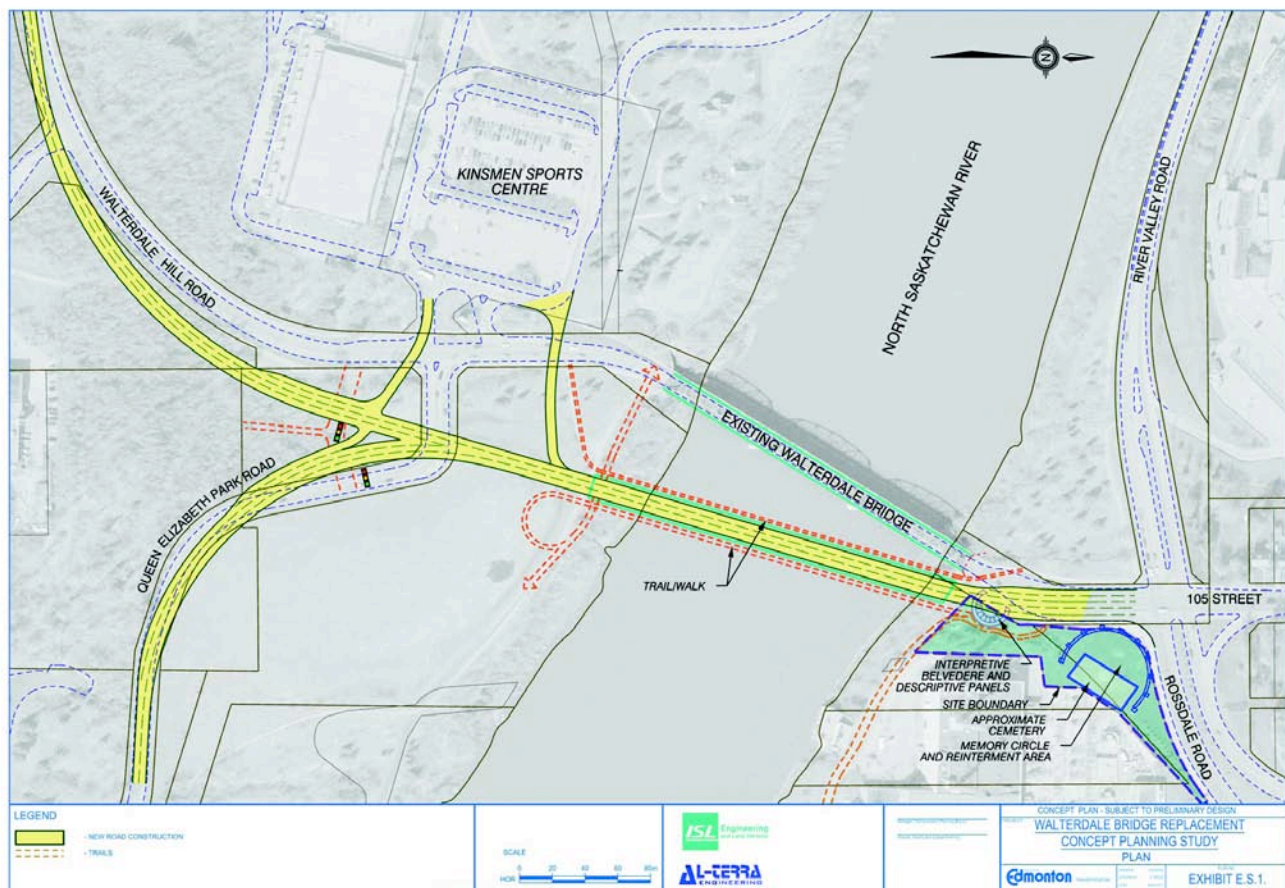
Bridge Alignment Background

Walterdale Bridge Concept Planning Study

The Walterdale Bridge is nearing the end of its serviceable life and assessments indicate the bridge should be replaced by the end of 2014.

Recommendation

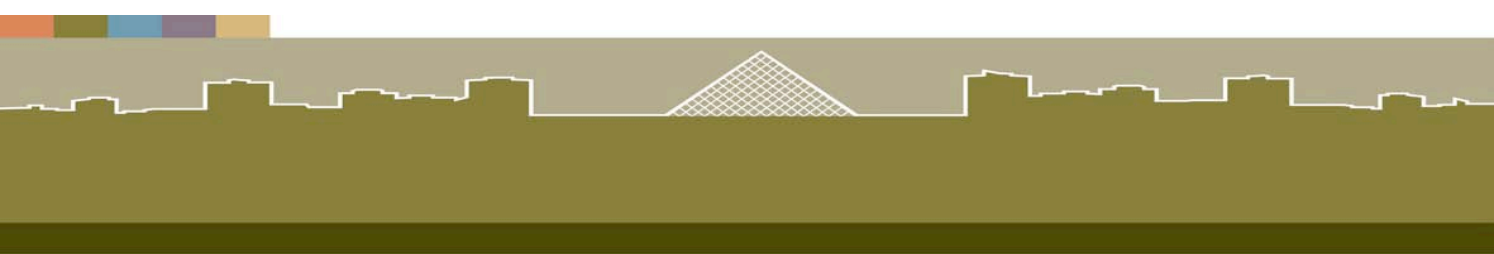
After further technical design review, the addition of new ideas, and receiving feedback from the public, the recommended bridge alignment was presented at the March 22, 2011 Public Information Session. More information about this recommendation, along with other project information, can be found online at www.edmonton.ca



For more information, please contact:

Robin Casavant (780) 496-1792

walterdalebridge@edmonton.ca



Walterdale Bridge Concept Planning Study

The existing bridge structure will be replaced with a modern “signature” structure, connecting to existing roadways to form an attractive entrance to downtown Edmonton.

Recommendation

After consideration of project constraints, aesthetics, integration into the urban environment and input from the public a through-arch structure is recommended for the new bridge. More information about this recommendation, along with other project information, can be found online at www.edmonton.ca



For more information, please contact:

Robin Casavant (780) 496-1792

walterdalebridge@edmonton.ca