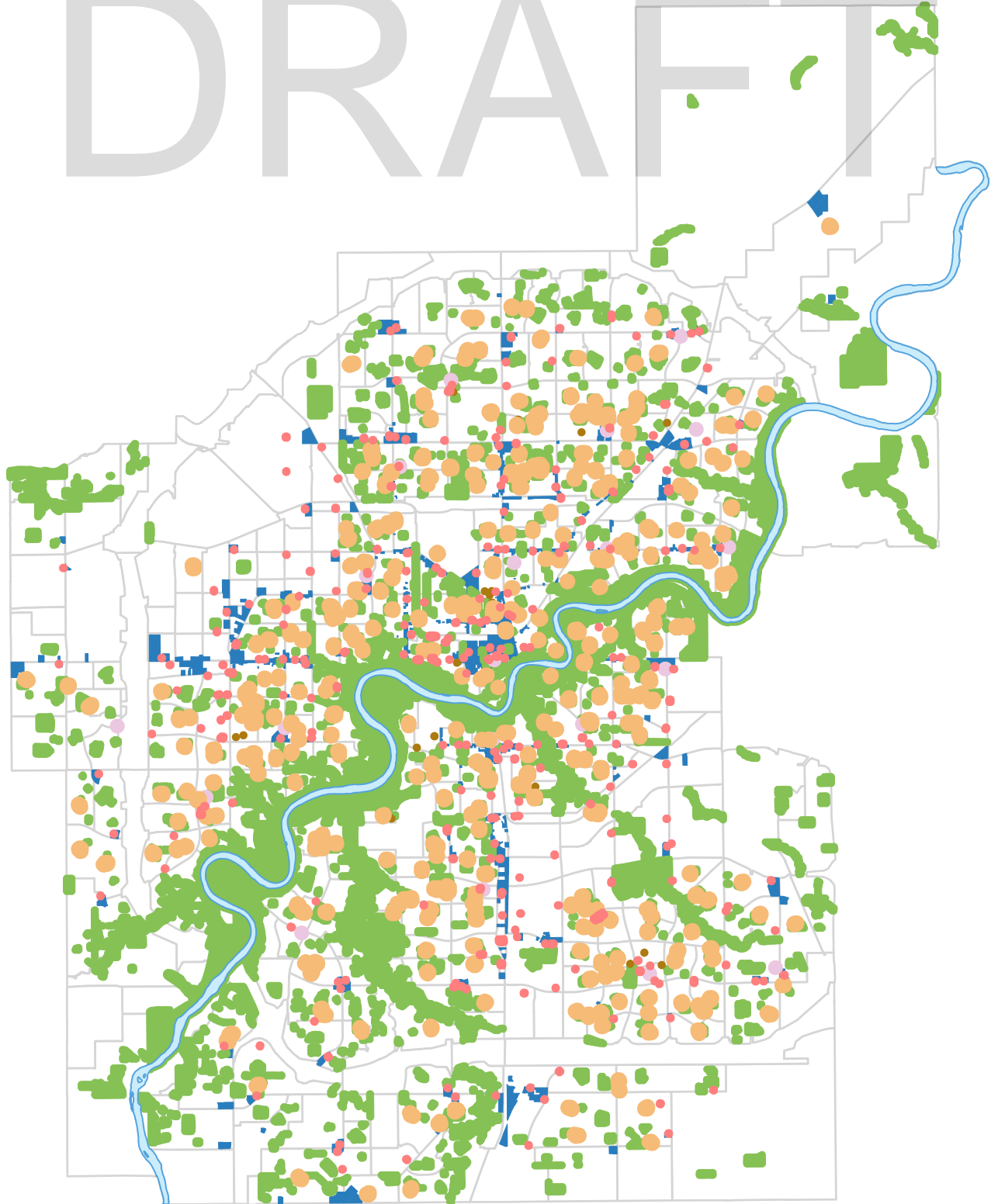


# Separation of Cannabis Stores from Sensitive Uses

# DRAFT



**Map Compiled by:**  
Zoning Bylaw,  
Development Services

February 2018

The City of Edmonton disclaims  
any liability for the use of this  
map.

**LEGEND**



200m Buffer around Schools



100m Buffer around Alcohol Sales



100m Buffer around AHS



200m Buffer around Public Libraries



100m Buffer around Parks

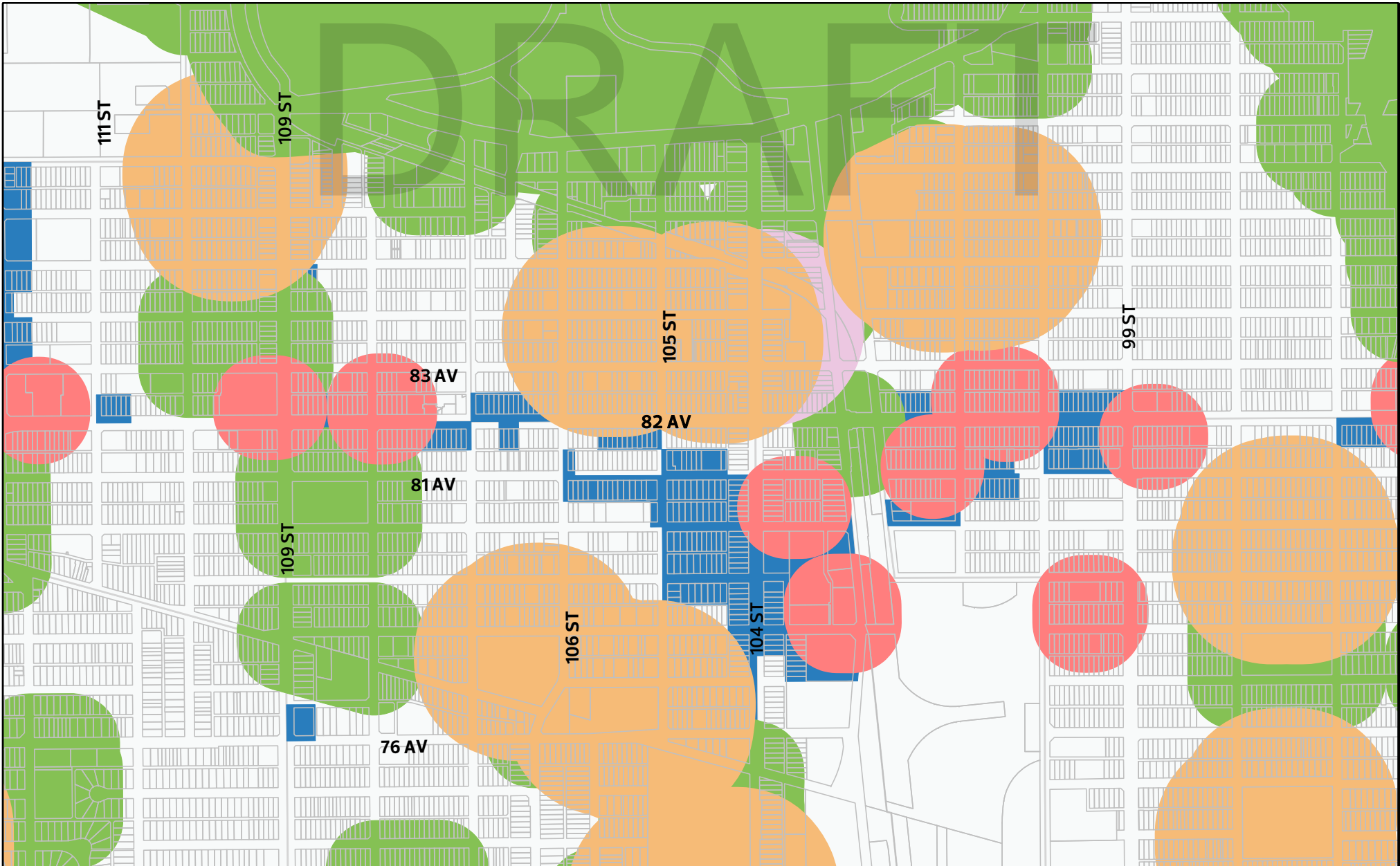


Potential Areas for Cannabis Stores  
(Based on current zoning)



No reproduction of this map, in whole or in part, is permitted without express written consent of the City of Edmonton, Urban Form and Corporate Strategic Development Department

# Example Separation of Cannabis Stores from Sensitive Uses: Strathcona

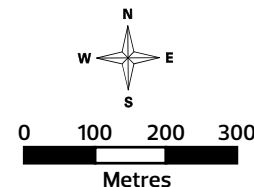


**Map Compiled by:**  
 Zoning Bylaw,  
 Development Services  
 February 2018

**LEGEND**

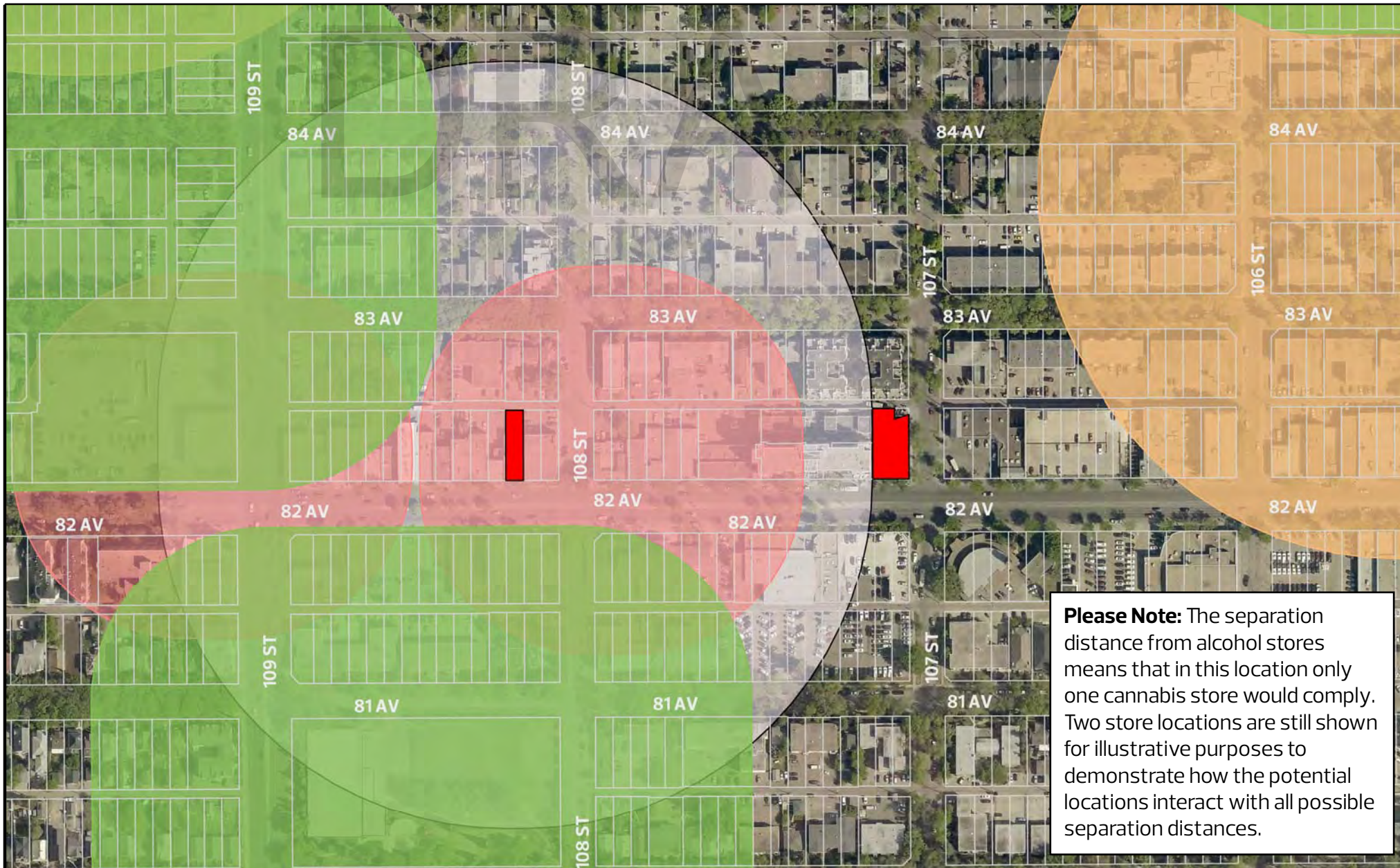
- 200m Buffer around Schools
- 100m Buffer around Alcohol Sales
- 200m Buffer around Public Libraries
- 100m Buffer around Parks
- Potential Areas for Cannabis Stores  
(Based on current zoning)

The City of Edmonton disclaims any liability for the use of this map.



No reproduction of this map, in whole or in part, is permitted without express written consent of the City of Edmonton, Urban Form and Corporate Strategic Development Department

# Example Separation between Cannabis Stores: Strathcona



**Please Note:** The separation distance from alcohol stores means that in this location only one cannabis store would comply. Two store locations are still shown for illustrative purposes to demonstrate how the potential locations interact with all possible separation distances.






## Map Compiled by:

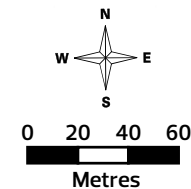
Zoning Bylaw,  
Development Services

February 2018

The City of Edmonton disclaims any liability for the use of this map.

## LEGEND

	Potential Cannabis Store Locations		100m Buffer around Alcohol Sales
	200m Buffer around Sample Site		100m Buffer around Parks
	200m Buffer around Schools		



No reproduction of this map, in whole or in part, is permitted without express written consent of the City of Edmonton, Urban Form and Corporate Strategic Development Department