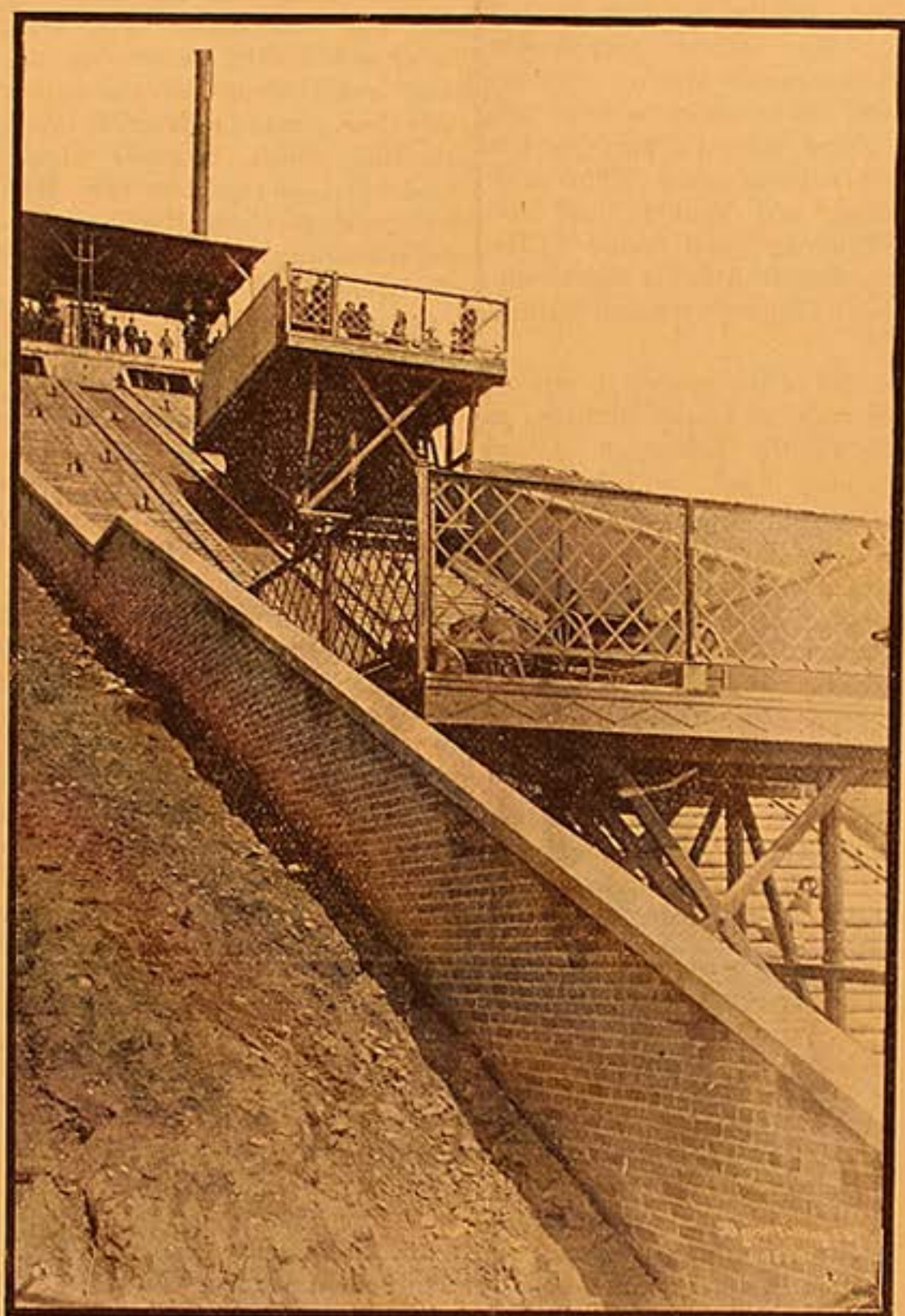


Edmonton's Incline Railway



Weary Climb up to the City's Front Door no Longer Necessary

The long hard climb up the hill to Edmonton from the valley of the Saskatchewan that has for so many years taxed the energies of man and beast is no longer a necessity. This week the incline railway at the foot of First street went into operation. It is the only one of its kind in Canada, west of Hamilton, and is built on the most modern principles. Its original cost was estimated at \$16,000 but this figure has, now that construction has been completed, advanced to \$30,000. The president of the company is Mr. Joseph Hostyn, proprietor of the Edmonton hotel.

The directors are Messrs Donald Ross, Richard Secord, F. B. Hobosn,

P. Anderson, and G. P. Blythe. The designing engineers were J. Nesbitt, mechanical engineer, and Chas. Taylor, electrical engineer. The machinery was purchased from the Jenckes Machine Company, of St. Catharines, Ont., by Mr. Hostyn and Mr. Nesbitt, who made a special trip to the east for that purpose.

Every precaution has been taken to ensure absolute safety. One and a half inch safety cables are attached to each car. Should the operating cables break, these bring the cars to a standstill. By an automatic arrangement the gates will open only after the car reaches the landing. To prevent horses back-

(Continued on page 4)

(Continued from page 1)

ing through these, the waggon's are chained to the car floor before the journey, which takes a little less than a minute. At first it was intended to use electric power but the city discovered that its plant could not stand such a tax on its resources and this plan had to be abandoned.

Steam was resorted to, the engine that was installed having a capacity of 100 horse power.

For teams a charge of fifteen cents for the round trip is made and for foot passengers five cents. The hours of operation are from seven in the morning to seven in the evening, except on special occasions when they will be extended.

Ever since the incline opened for business, it has been constantly in operation and is recognized by all who have had occasion to go up and down the hill as a very great boon. To the portion of the city that lies on the flats, it will mean much development. To those who have been behind the enterprise and who have pushed it through to completion in the face of many discouragements the warmest congratulations are due.
