

Edmonton Transit System - Customer Safety & Security 2014 Annual Summary

Stephen Ma
Security Operations Data Analyst

Privacy Clause: This information is being provided to you as per s.40 (1)(q) of the Freedom of Information and Protection of Privacy Act:

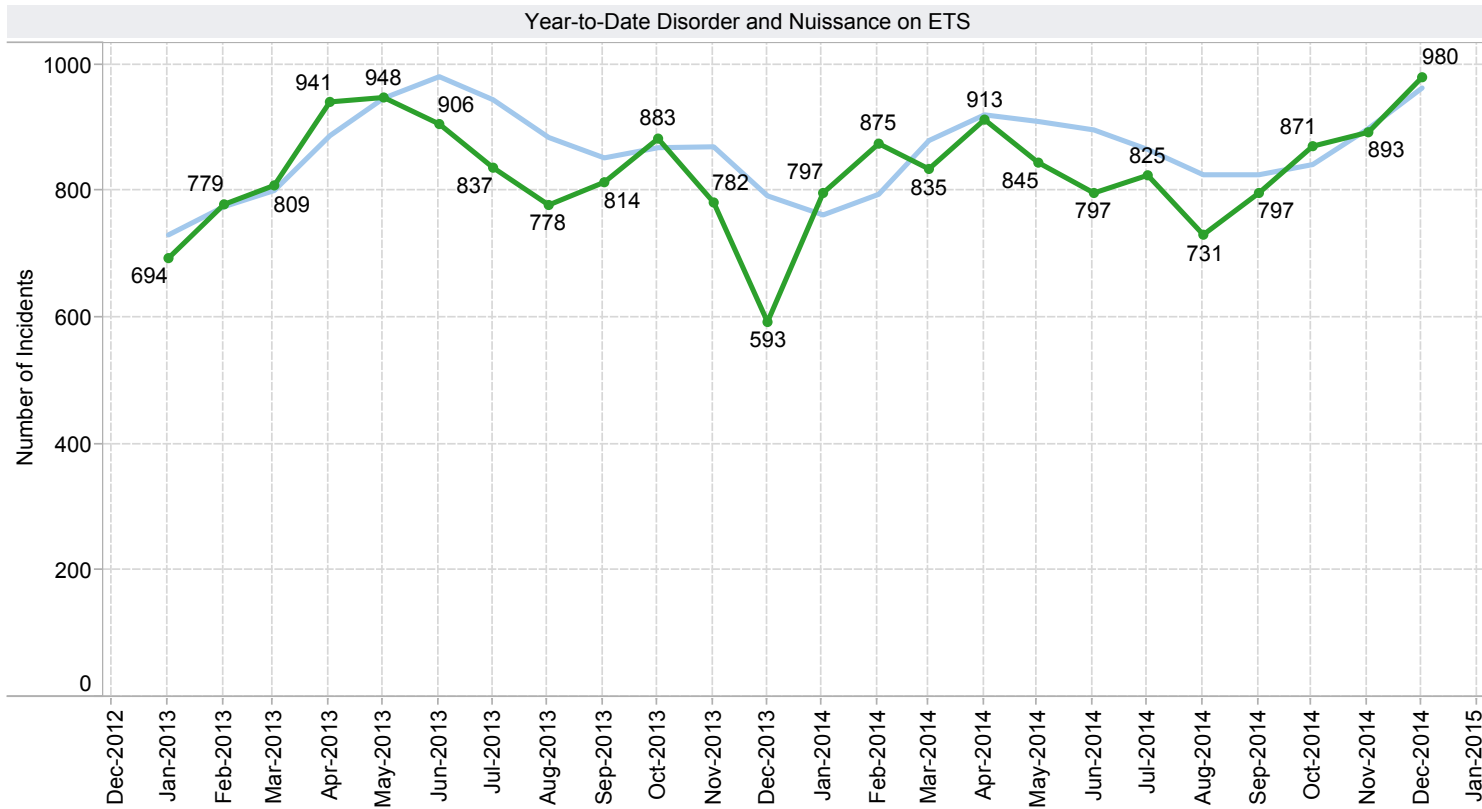
A public body may disclose personal information only to a public body or a law enforcement agency in Canada to assist in an investigation

(i) undertaken with a view to a law enforcement proceeding, or

(ii) from which a law enforcement proceeding is likely to result

No secondary uses, copying or dissemination of this information is permitted without first obtaining the express consent of Ron Gabruck, Director, Operational Support
at (780) 496-5746.

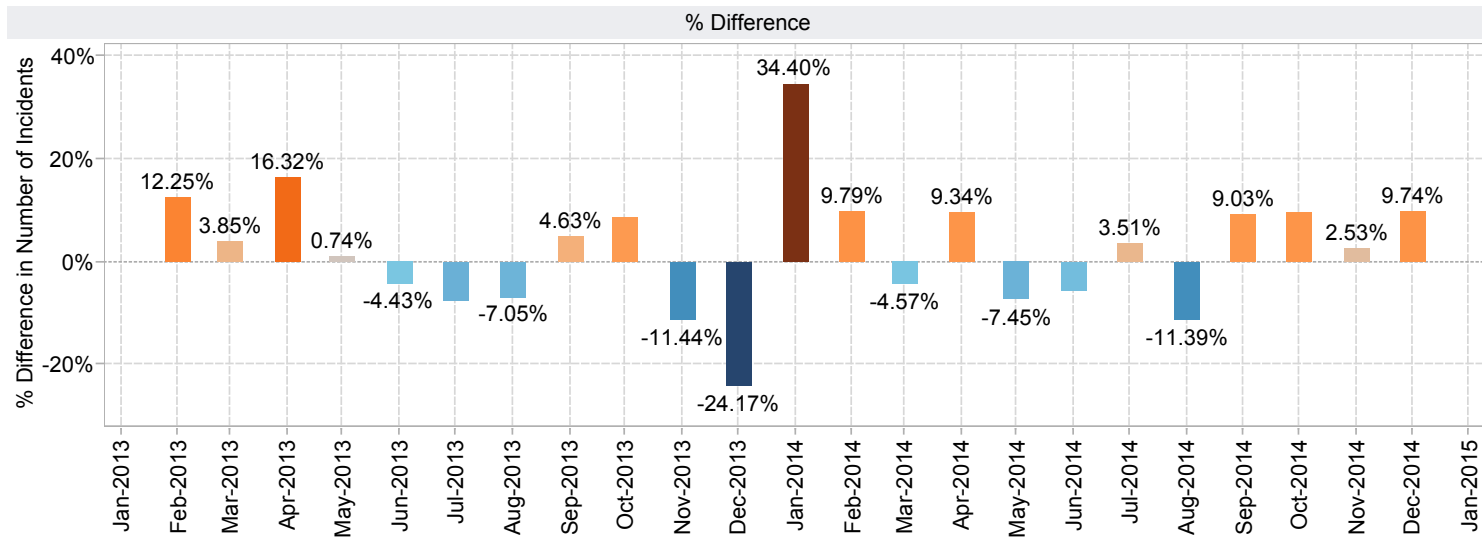
Disorder and Nuisance on ETS



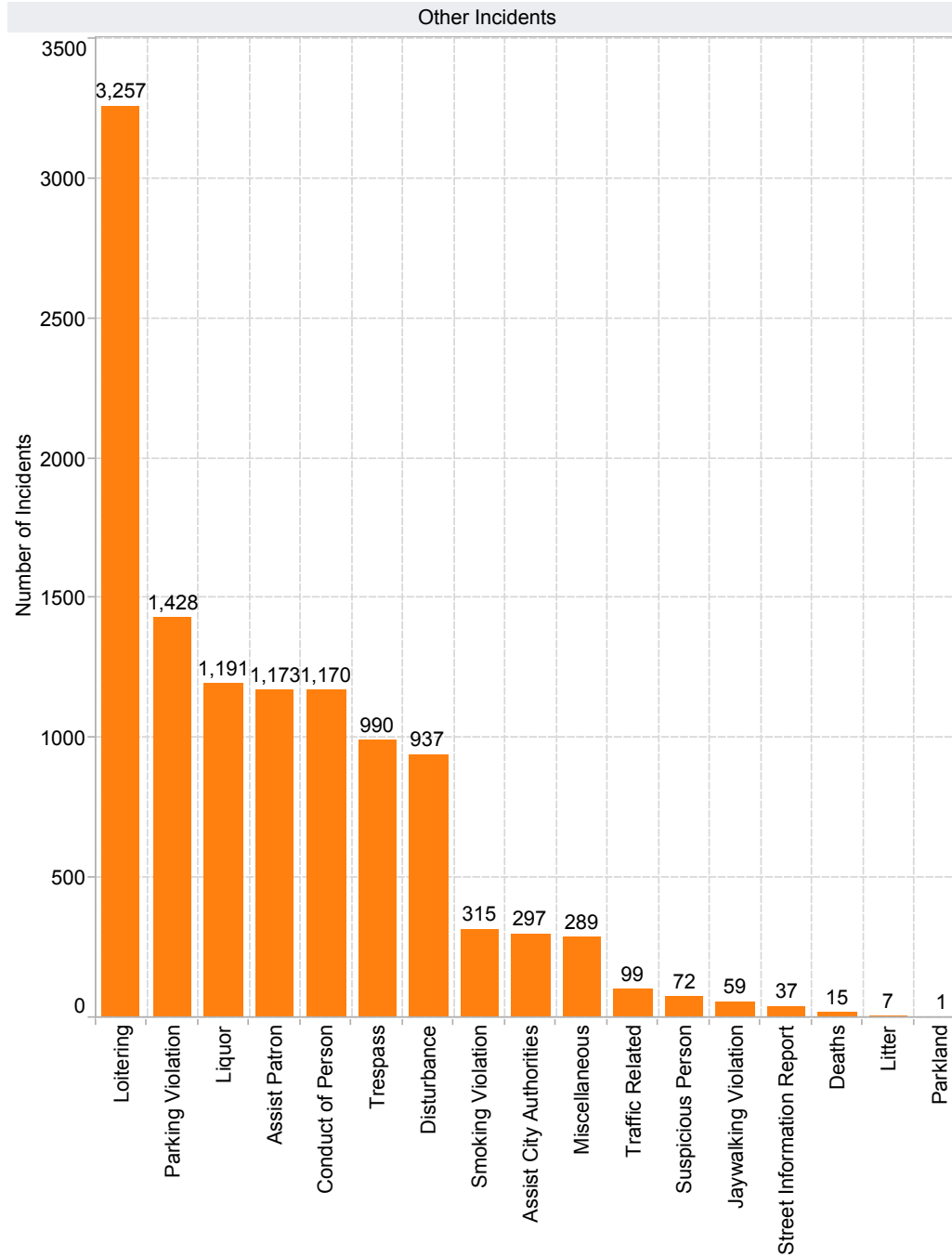
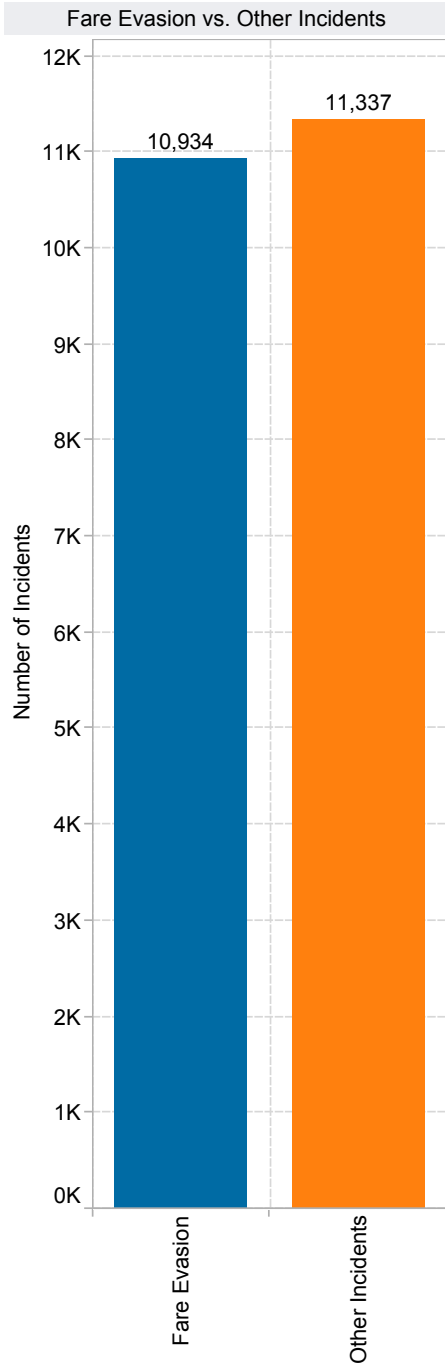
These graphs represent all incidents that Transit Peace Officers attended over the past 24 months (not including Fare Evasion to avoid skewing the data).

The top graph shows an count of all incidents that are non-criminal in nature superimposed over a 3-month rolling average.

The lower graph is a representation of the % change each month during the reporting period.



Types of Disorder and Nuisance on ETS



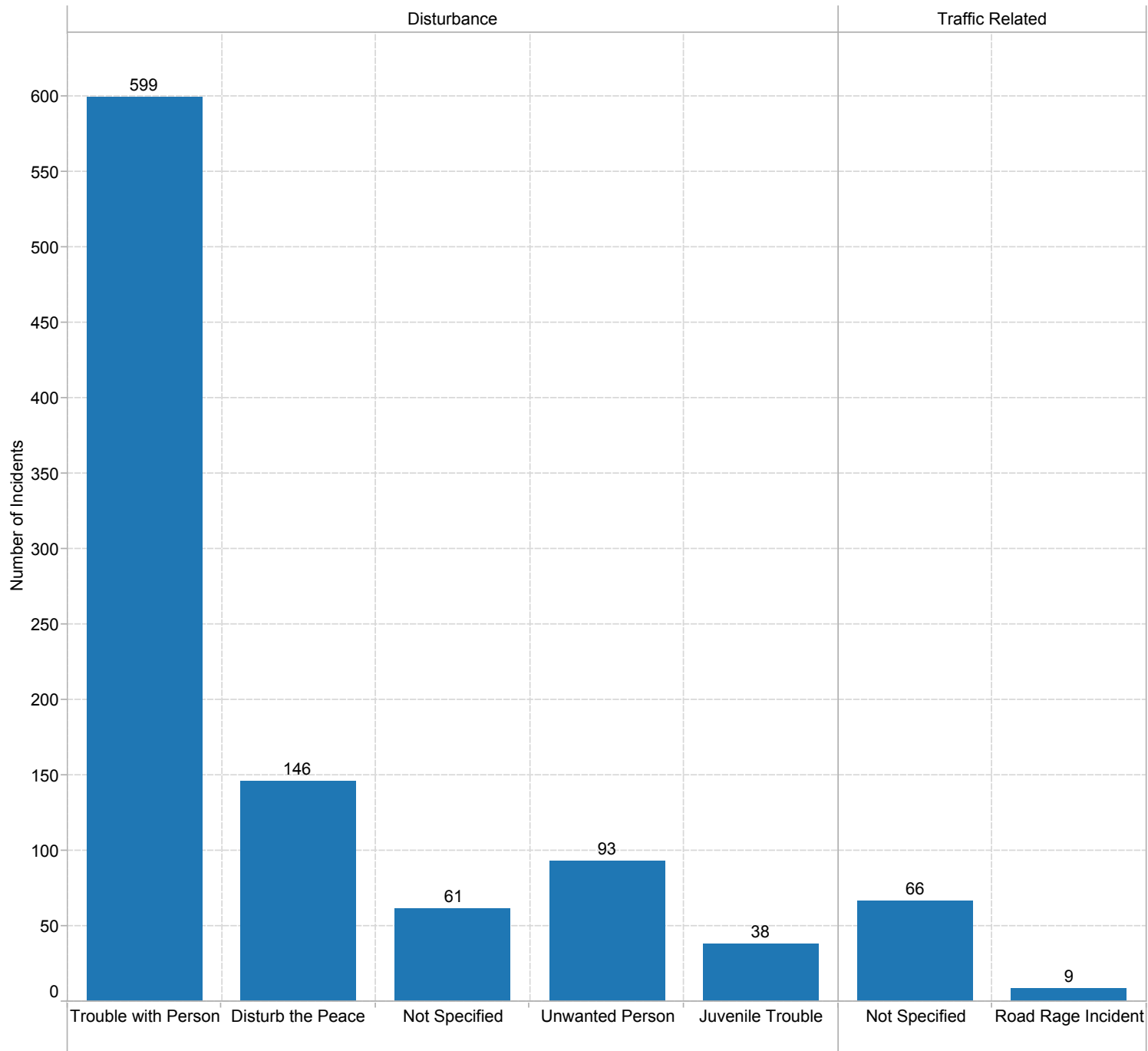
These graphs represent all incidents that Transit Peace Officers attended and is divided into separate graphs.

The left graph shows a count of Fare Evasion versus other nuisance and disorder incidents.

The right graph splits the "Other Incidents" into the incident's classification in POSSE.

■ Fare Evasion
■ Other Incidents

Nuisance Incidents

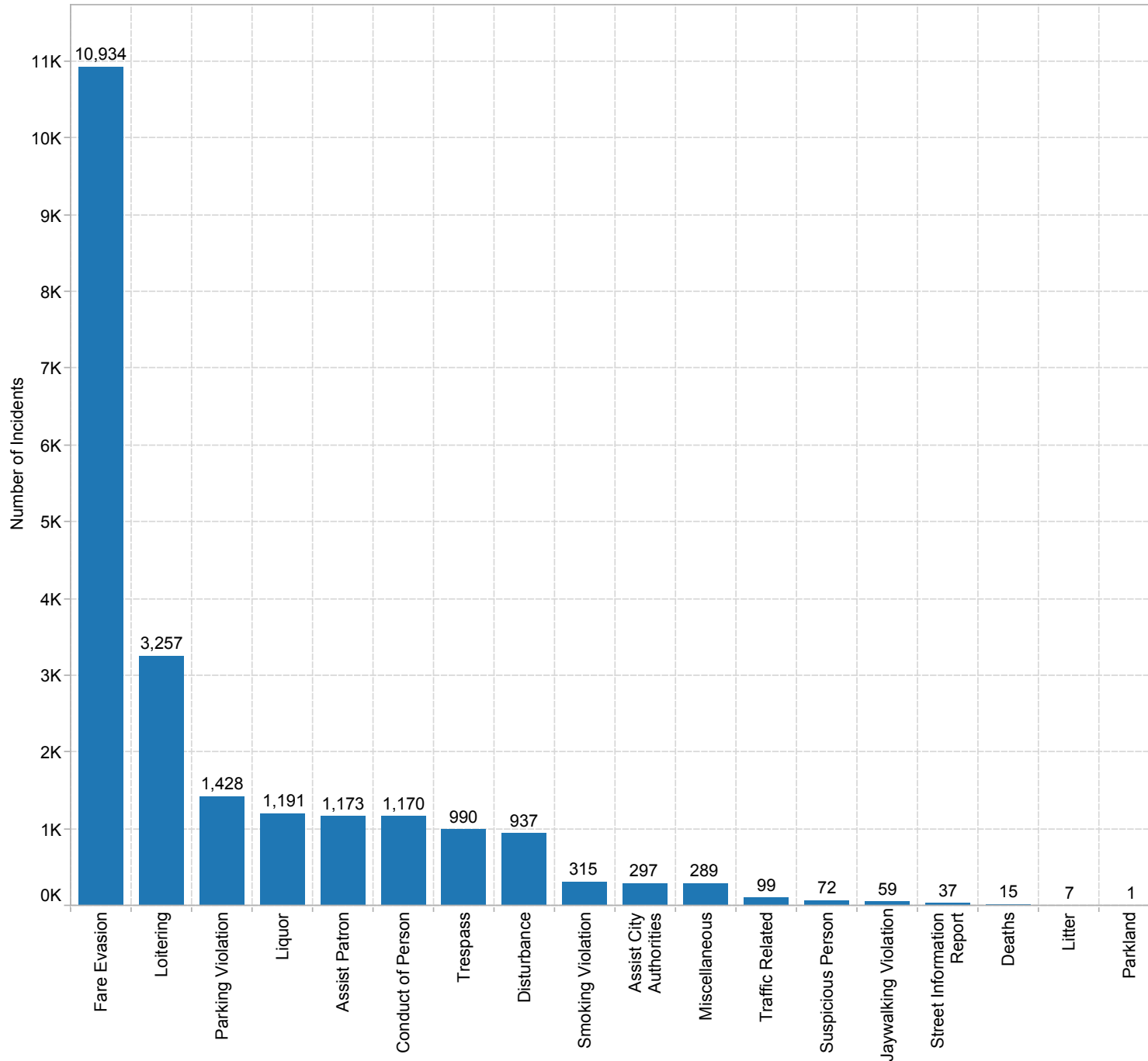


This graph represents all incidents that Transit Peace Officers attended which are not distinguished as being a criminal code violation, a provincial statute violation, or a municipal bylaw infraction.

Number of nuisance incidents:

1,012

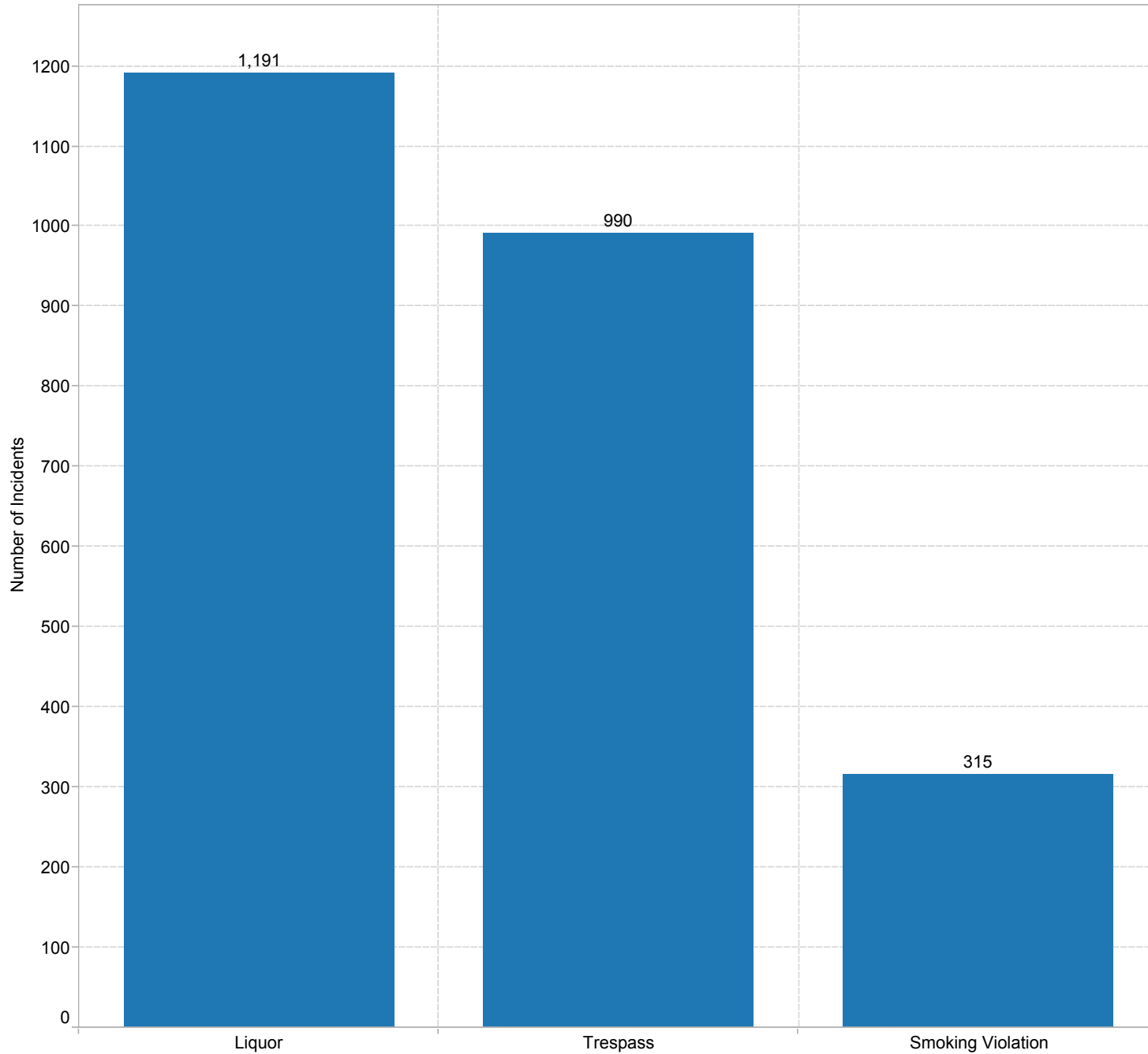
Municipal Bylaw Violations



This graph represents all incidents that Transit Peace Officers attended which are considered municipal bylaw infractions and may be punishable by fine issued by a Transit Peace Officer.

Number of Municipal Bylaw Violations:
15,718

Provincial Statute Violations



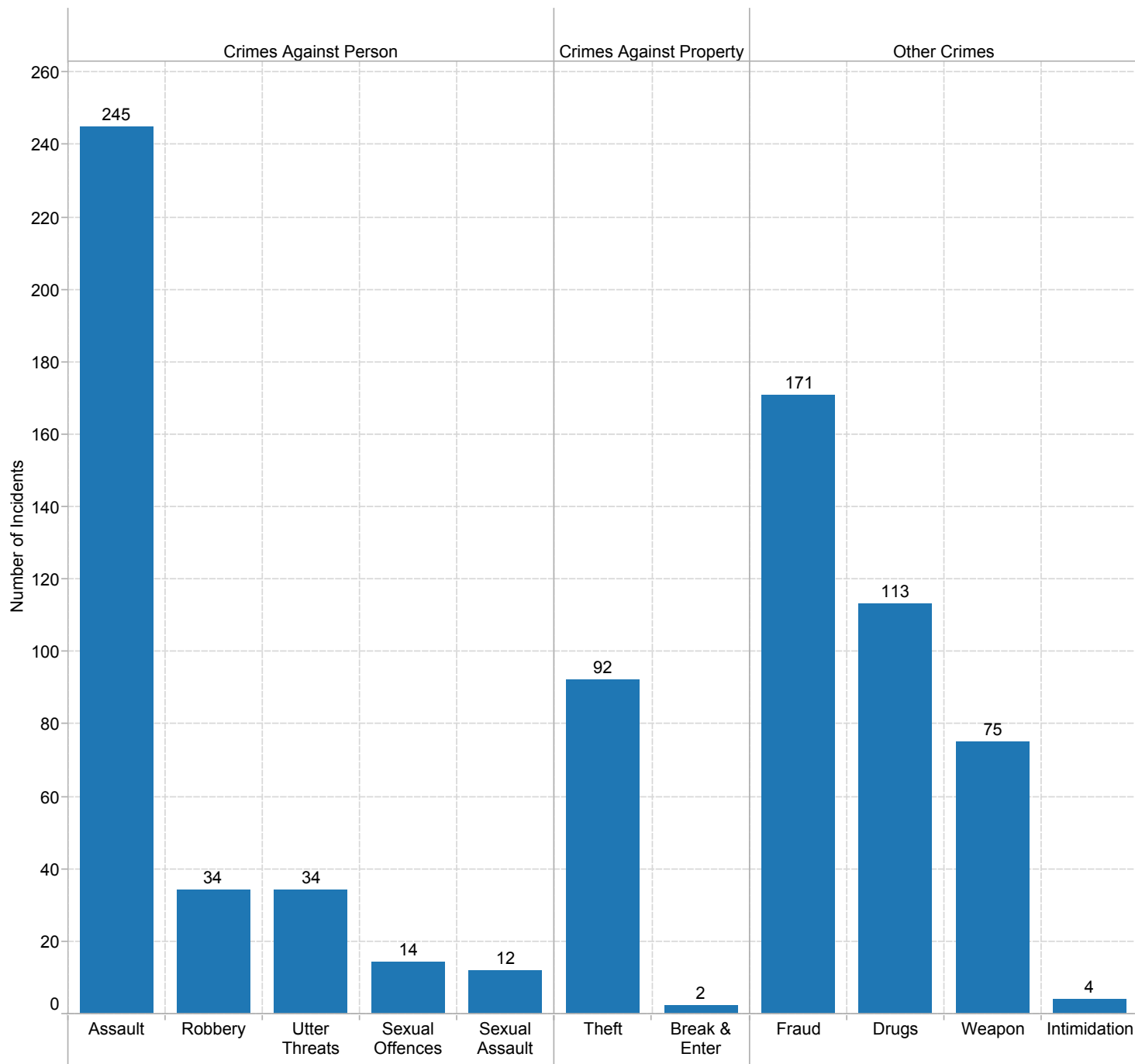
This graph represents all incidents that Transit Peace Officers attended which are considered provincial statute violations under the Criminal Code of Canada (UCR 7000).

Incidents involving liquor, trespassing, and smoking violations fall under this category.

Number of Provincial Statute Violations:

2,496

Criminal Code Offences



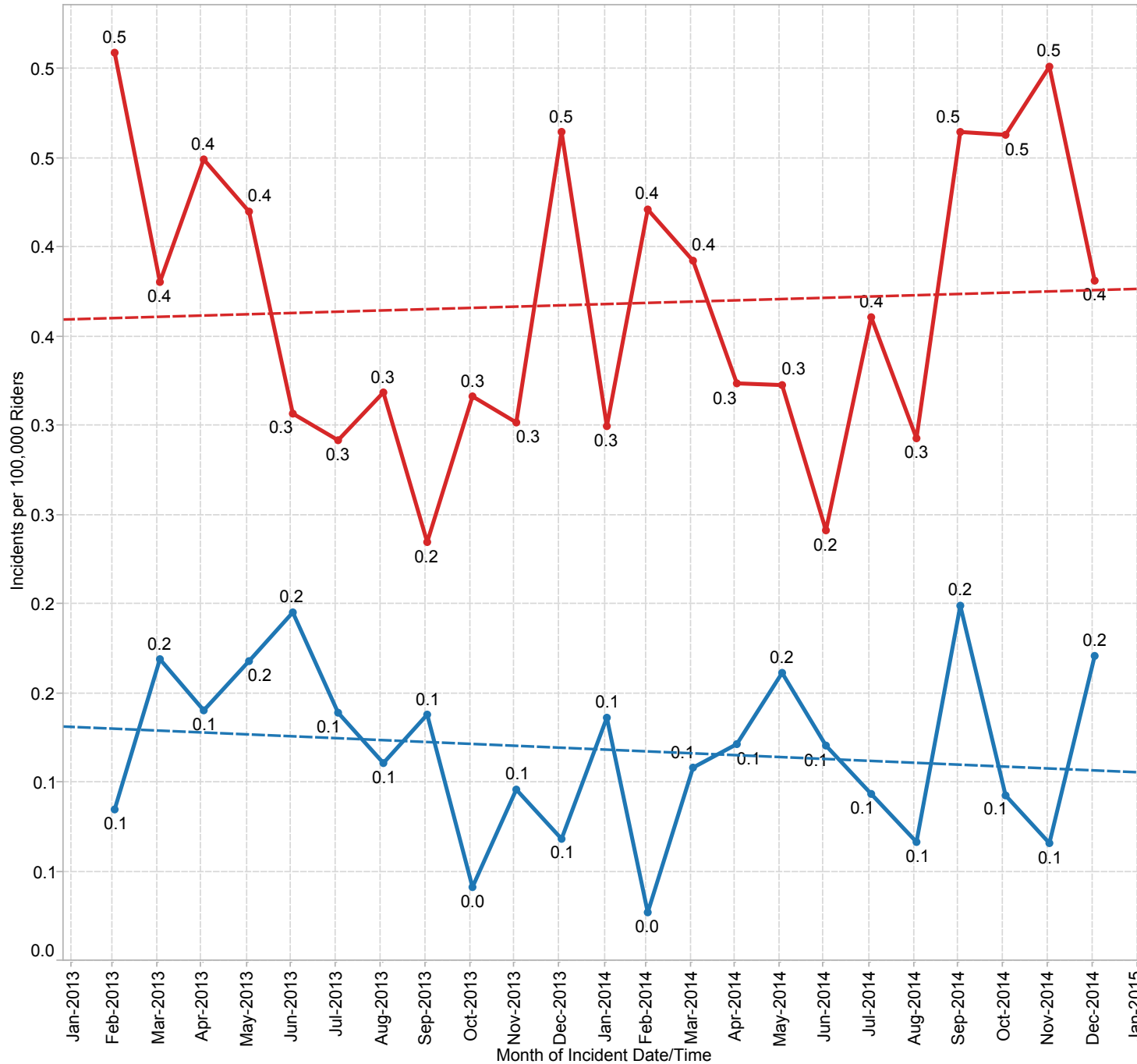
This graph represents all incidents that Transit Peace Officers attended which are considered Criminal Code Offences under the Criminal Code of Canada (UCR 1000, 2000, 3000, and 4000).

Because of the severity of criminal code offences, Edmonton Police Service members are dispatched and Transit Peace Officers serve in a support role.

Types of Criminal Code Offences:

Crimes Against Person	339
Crimes Against Property	94
Other Crimes	363
Grand Total	796

Criminal Code Offences per 100,000 Riders



The following graph shows the general yearly trend for the number of criminal offences per 100,000 ridership for the past 24 months.

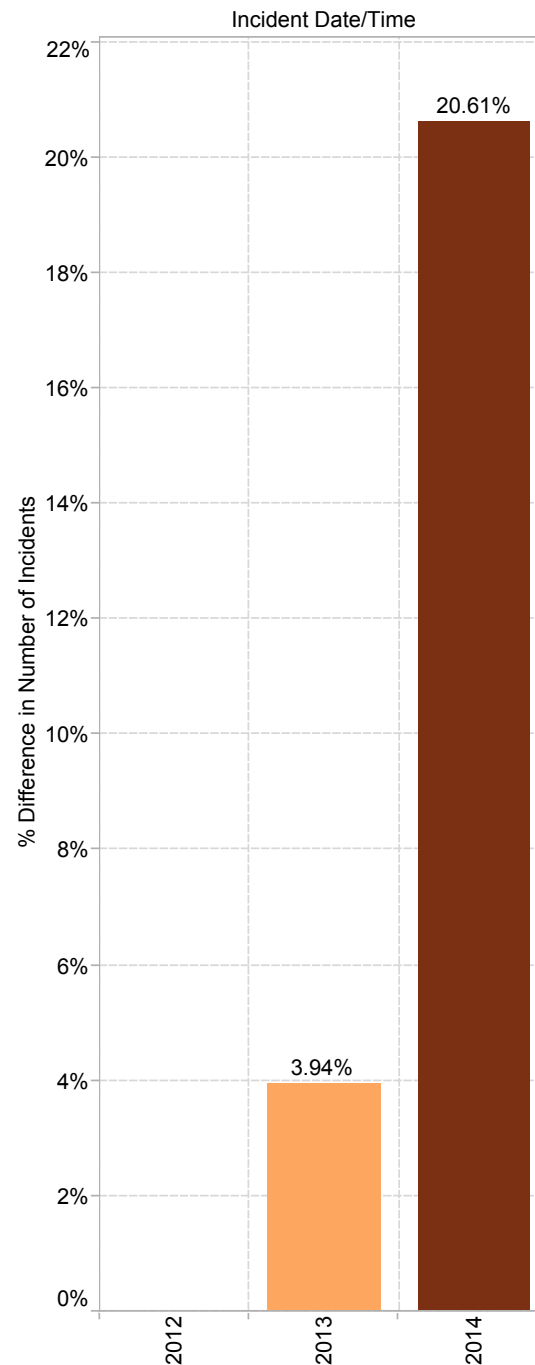
Ridership is determined by ETS Business Development.

Incident Category

- Crimes Against Person
- Crimes Against Property

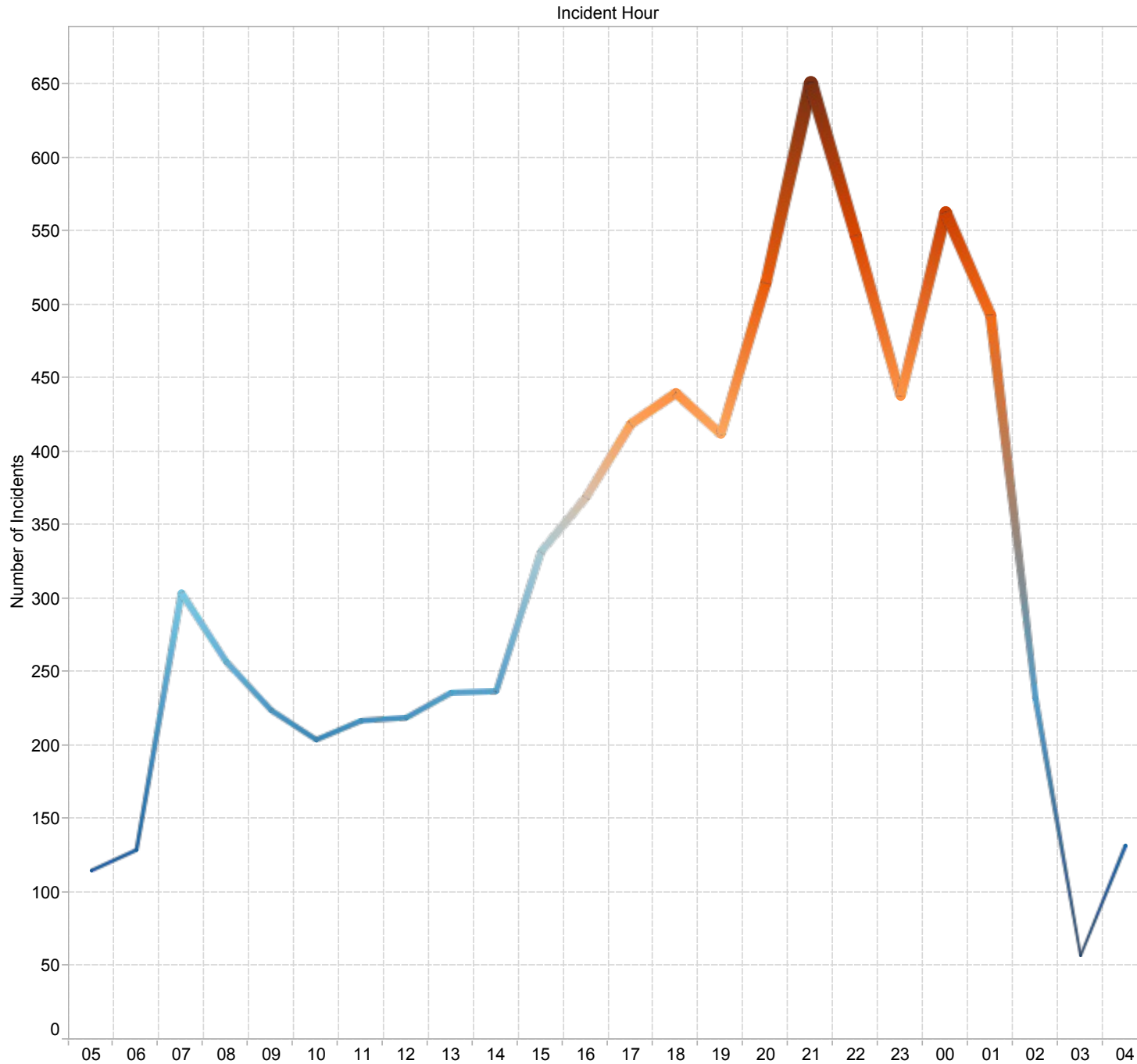
YTD Crime Comparisons

	2012	2013	2014
Crimes Against The Person (1000)	Aggravated Assault Level 3	3	6
	Assault Against Peace Public Officer	22	21
	Assault Level 1	154	157
	Assault With Weapon or Causing Bodily Harm Lev..	28	16
	Intimidation of a Non-Justice System Parti..	3	7
	Robbery	46	36
	Sexual Assault	8	13
	Utter Threats to Person	54	37
Crimes Against Property (2000)	Arson	3	6
	Break & Enter	3	1
	Fraud	67	107
	Have Stolen Goods	5	3
	Mischief	203	1,181
	Theft \$5,000 or under	63	89
	Theft \$5,000 or under from a motor vehicle	3	11
	Theft of a motor vehicle \$5,000 and under	1	3
	Theft over \$5,000	1	2
Other Criminal Code Violations (3000)	Indecent Acts	19	19
	Obstruct Public Peace Officer	53	70
	Possession of Weapons	76	59
	Sexual Offences, Public Morals and Disorderly Co..	2	1
	Wilful and Forbidden Acts in Respect of Certain Pro..	5	4
Cont. rolle..	Other Controlled and Substances Act	78	85
Grand Total		900	1,931
			2,480



The table shows the YTD Comparison for the types of criminal code offences that have been recorded in POSSE. The bar chart illustrates the % change comparison between the previous 3 years.

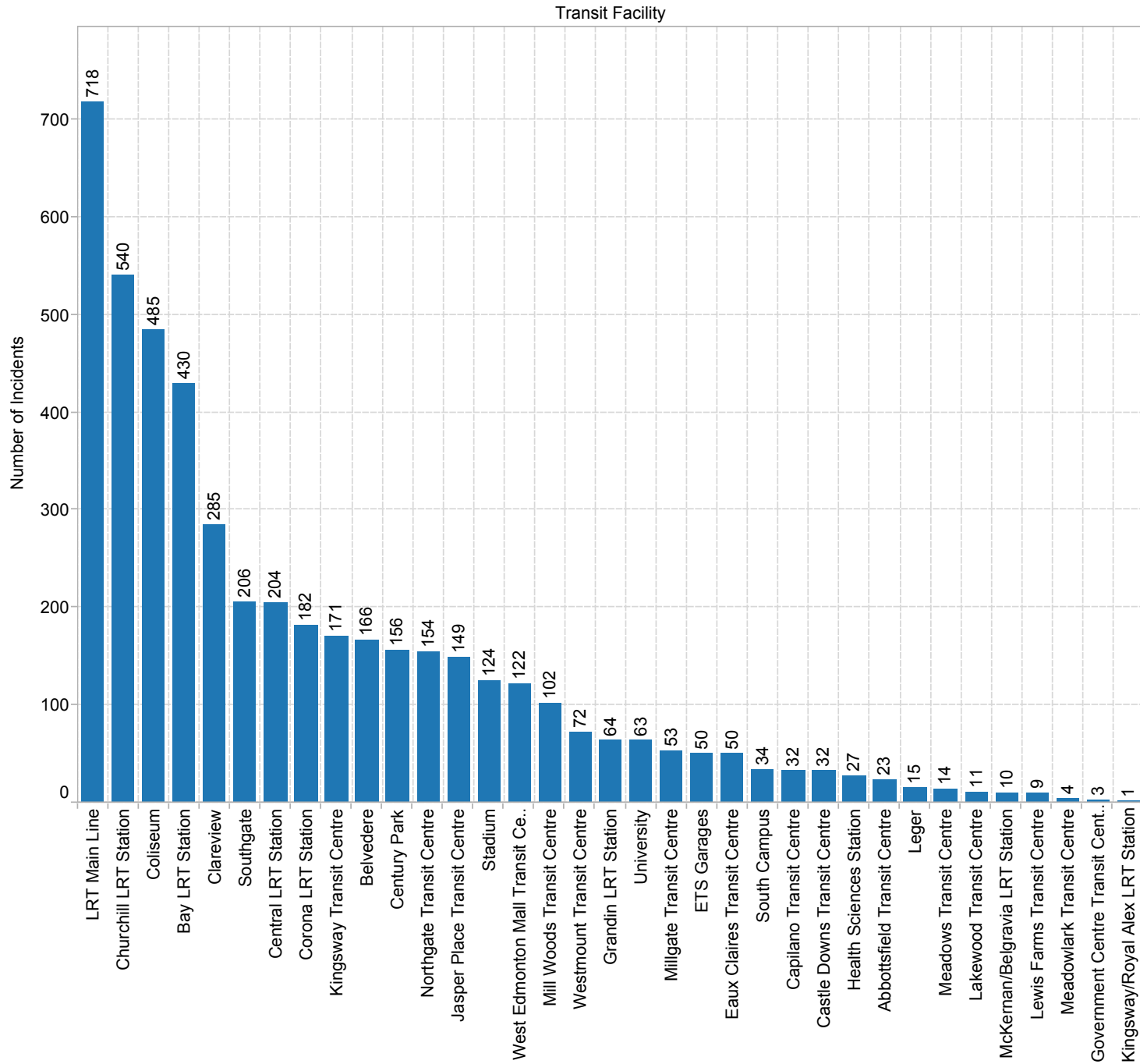
Spatial-Temporal Incident Analysis



The spatial-temporal analysis is based on non-discretionary types of security incidents. These are the type of incidents that officers cannot selectively decide not to undertake or report on such as robbery, theft, and liquor incidents. They include all incident types except for fare evasion, parking violations, smoking violations, and assist patron/agency calls. This analysis is done on these types of calls as they prove valuable in resource allocation decision making and workload comparison.

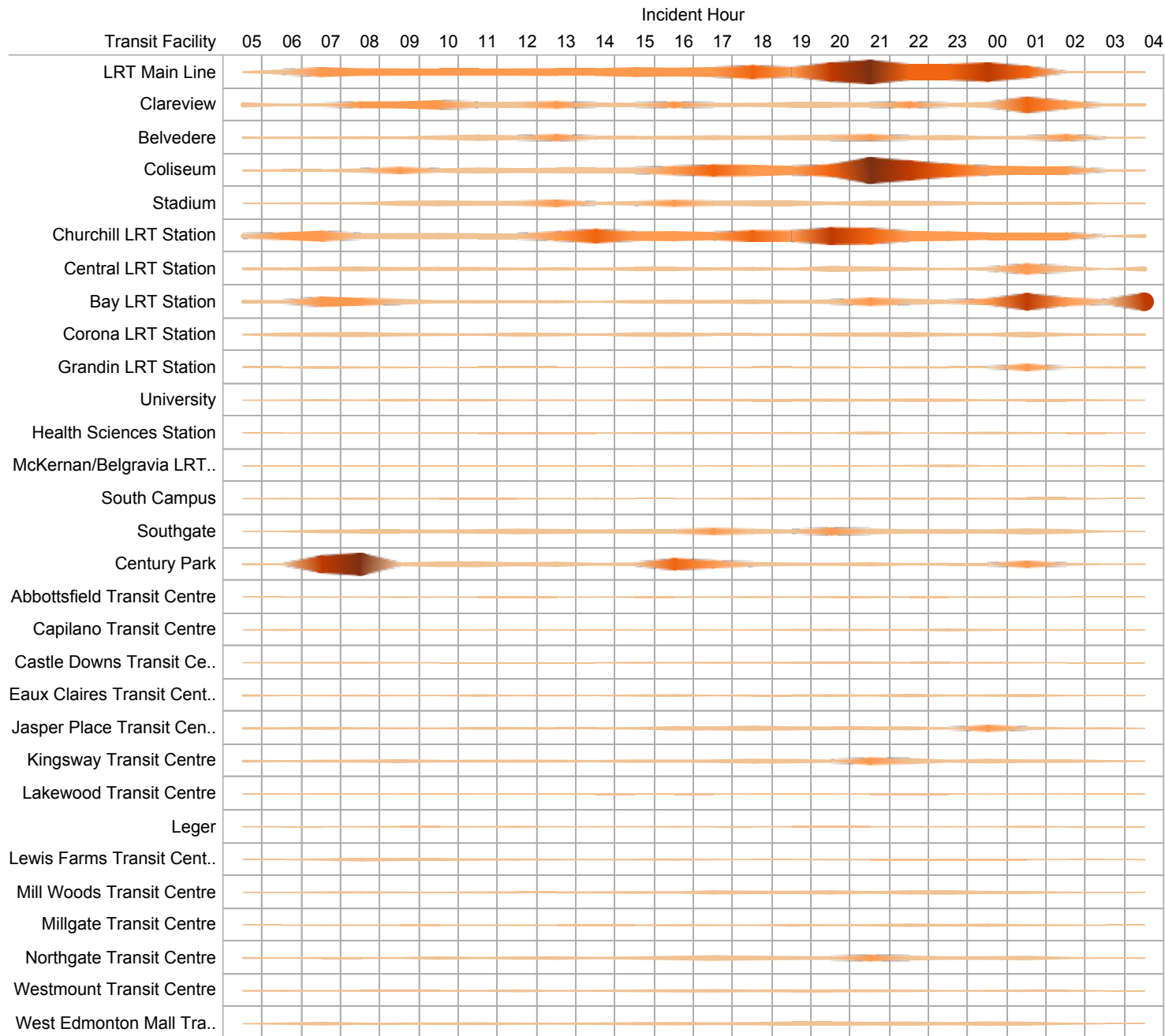
The chart shows the distribution of security incidents over 24 hours. The chosen timeframe of 0500-0500 hours is intentional and reflects the typical crime day with 0500 usually exhibiting the lowest crime volume.

Spatial Distribution



This chart shows the spatial distribution at transit locations. LRT Stations and Transit Centres that are co-located are grouped together for the purpose of this summary and includes Belvedere, Century Park, Clareview, Coliseum, South Campus, Southgate, Stadium, and University.

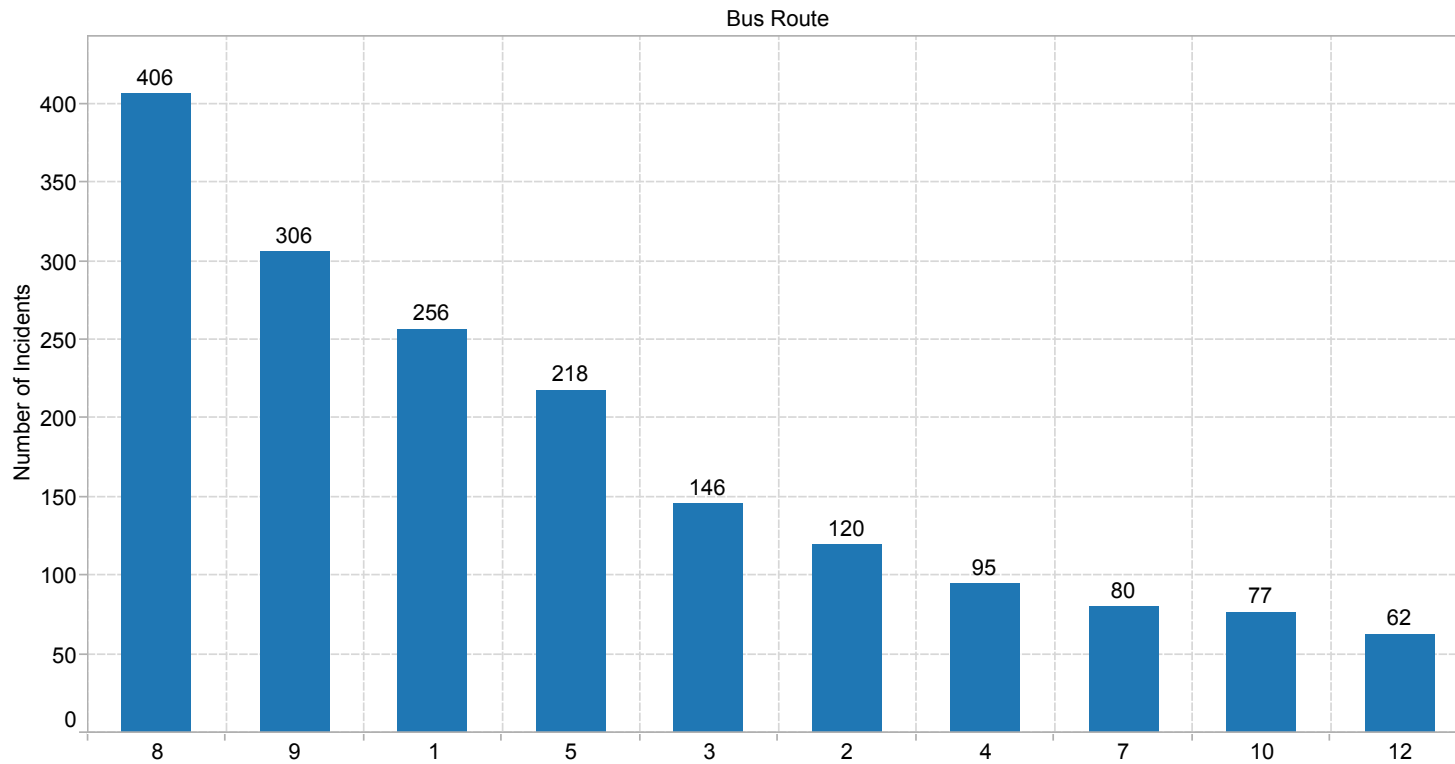
Time of Day and Location Surface Map



The table shows a time of day-location surface density map of incidents that occurred. Note that this surface map only shows **incident volume by count** for each location and time and is not the a predictive forecast as generated by the Daily Crime Forecast model.



Incidents on Bus Routes



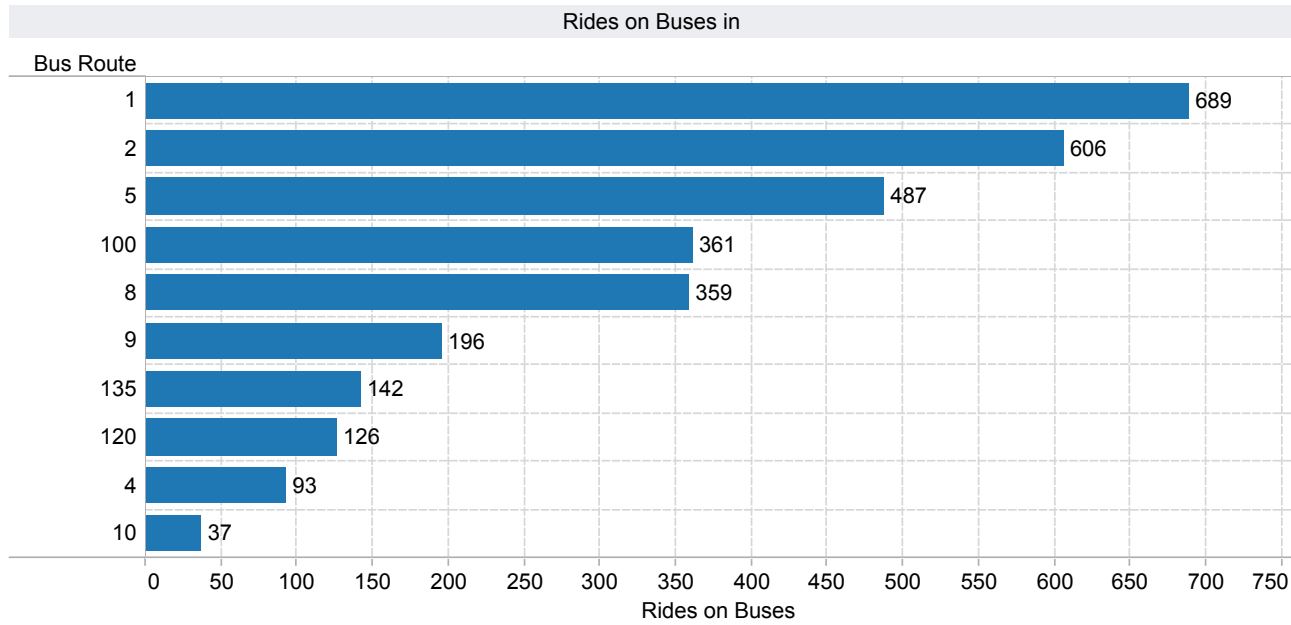
This page shows the number of security related incidents that occurred on ETS Bus Routes (Top 10 routes).

The table and graphs below show the YTD total as well as a % Change for the top 10 routes of the year.

YTD Bus Route Incidents and % Change

Bus Route	2013	2014	Bus Route	2014
8	359	406	8	13.09%
9	263	306	9	16.35%
1	252	256	1	1.59%
5	227	218	5	-3.96%
3	124	146	3	17.74%
2	120	120	2	0.00%
4	88	95	4	7.95%
10	88	77	10	-12.50%
7	67	80	7	19.40%
12	75	62	12	-17.33%

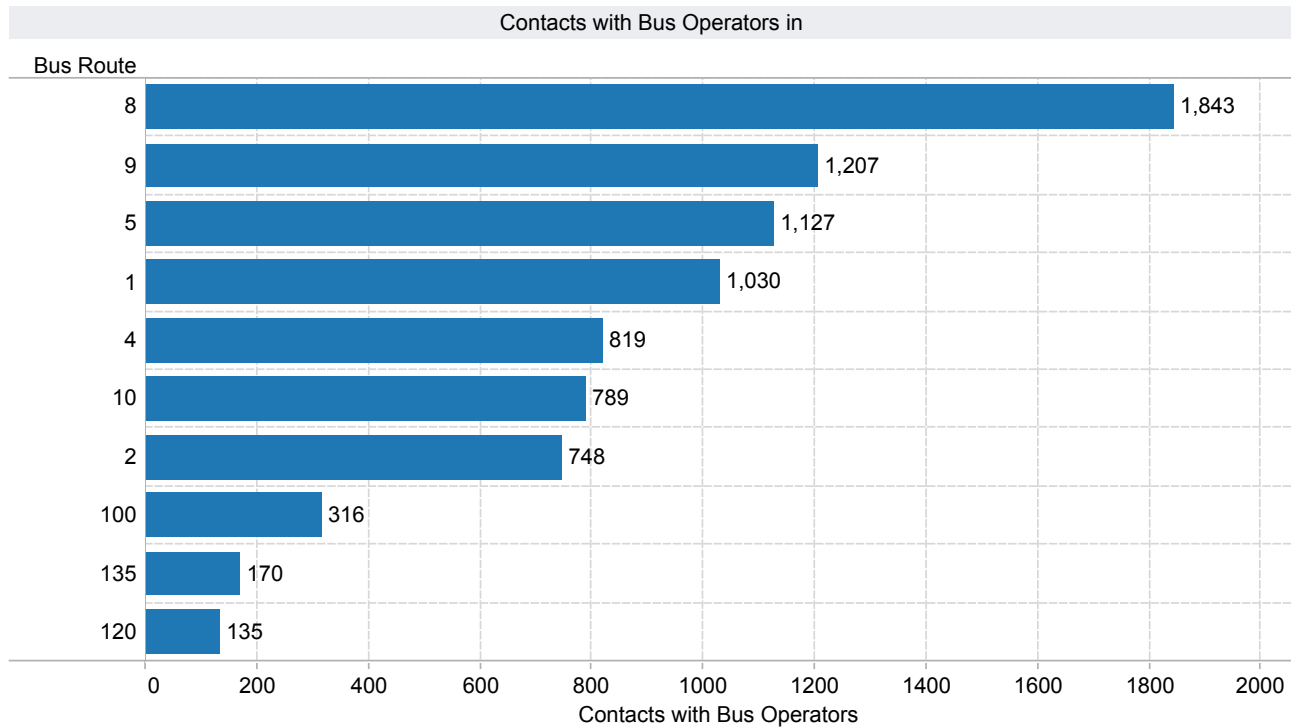
Rides on Buses and Contacts with Bus Operators



ROB Total

4,250

This page shows the number of Rides on Buses and Contacts with Bus Operators that occurred on ETS Bus Routes (Top 10 routes) and the total amounts completed.

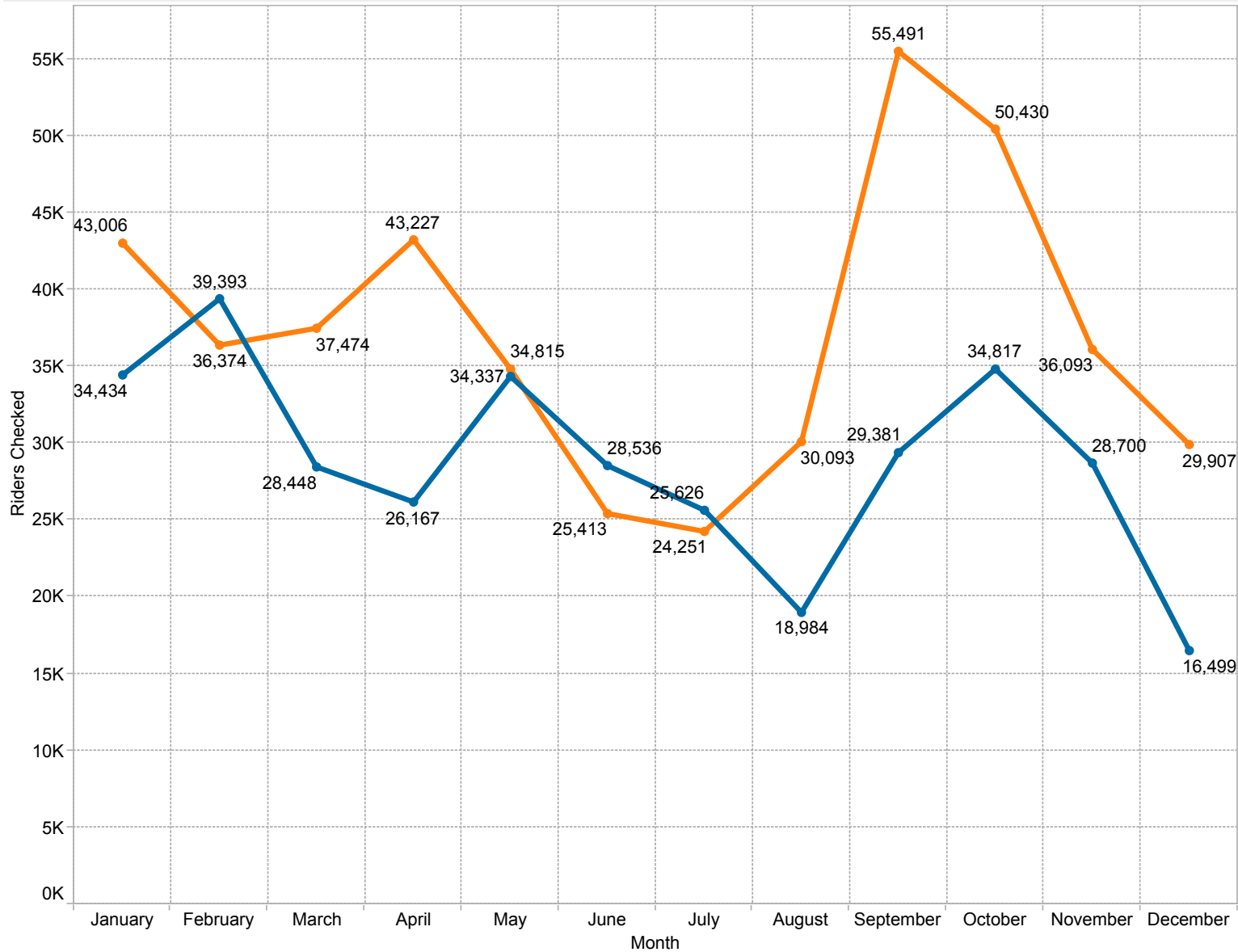


CBO Total

23,351

Riders Checked for Valid Fare

Riders Checked by Month



The top graph details YTD ridership per month, while the bottom displays the total amount of riders checked.

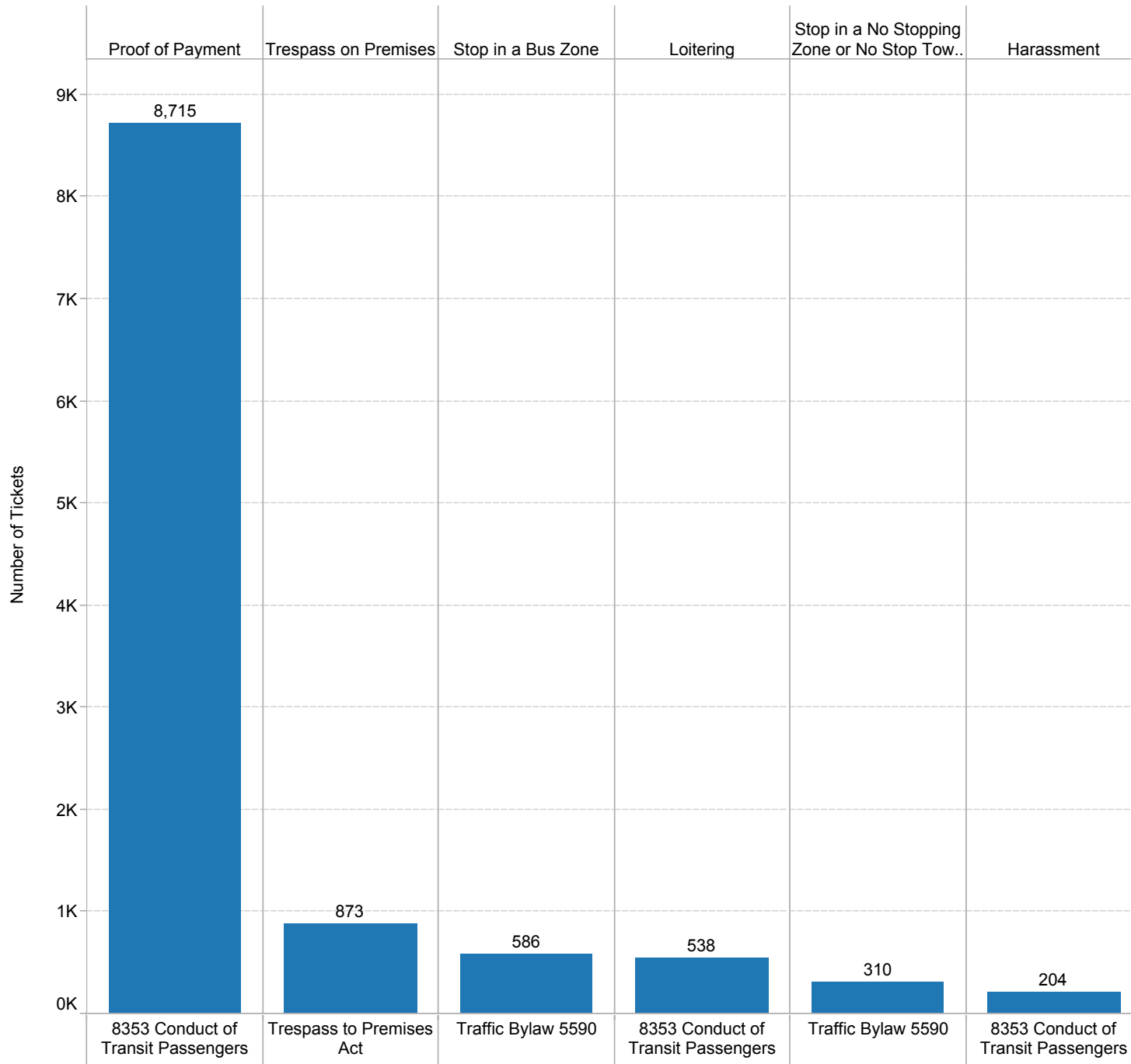
2014
2013

Total Riders Checked for Valid Fare

2013
446,574

2014
345,322

Bylaw Statistics



ETS Transit Peace Officers routinely issue tickets as an enforcement tool that is used for maintaining order, preventing disorder, and ultimately achieving voluntary compliance with social norms and expectations surrounding the use of transit. All tickets issued are in the form of Provincial J444 summonses except for parking violations which are still issued as municipal tickets.

The graph shows the top 5 types of violations for which tickets were issued excluding Fare Evasion to avoid skew.

Tickets Issued

VIOLATION	BYLAW	
Proof of Payment	8353 Conduct of Transit Passengers	8,715
Trespass on Premises	Trespass to Premises Act	873
Stop in a Bus Zone	Traffic Bylaw 5590	586
Loitering	8353 Conduct of Transit Passengers	538
Stop in a No Stopping Zone or No Stop Tow Away Zone or No Stop During Specifie..	Traffic Bylaw 5590	310
Harassment	8353 Conduct of Transit Passengers	204
Obstruction	8353 Conduct of Transit Passengers	167
Convey Open Liquor	Gaming and Liquor Regulation	144
Park in a No Parking Zone	Traffic Bylaw 5590	138
Obstruct Traffic by Parking	Traffic Bylaw 5590	113
Using/Consuming Liquor in a Public Place	Gaming and Liquor Act	107
Smoking inside a Building	Public Places Bylaw 14614	89
Public Intoxication	Gaming and Liquor Act	78
Feet on the Seat	8353 Conduct of Transit Passengers	67
Park in a Restricted Zone (Transit)	Traffic Bylaw 5590	67
Urinate/Defecate in a Public Place	Public Places Bylaw 14614	56
Park on Private Property With Public Access	Traffic Bylaw 5590	48
Trespass - Tracks	8353 Conduct of Transit Passengers	48
Passenger Loading Zone	Traffic Bylaw 5590	36
Marked Space	Traffic Bylaw 5590	35
Payment Prior to Entry	8353 Conduct of Transit Passengers	35
Climbing or Interfering	8353 Conduct of Transit Passengers	27
Park on Sidewalk or Boulevard	Traffic Bylaw 5590	25
Spitting	8353 Conduct of Transit Passengers	25
Crossing Gate	8353 Conduct of Transit Passengers	23
Fighting in a Public Place	Public Places Bylaw 14614	21
Littering in a Public Place	Public Places Bylaw 14614	20
Park in a Disabled Parking Space	Traffic Bylaw 5590	19
Possess Tobacco in a Public Place	Prevention of Youth Tobacco Use Act	16
	Youth Tobacco Act	1
Jaywalking (Other Than Crosswalk)	Traffic Bylaw 5590	16
Null	Null	1
	8353 Conduct of Transit Passengers	3
	Public Places Bylaw 14614	3
	Traffic Bylaw 5590	7
Cycling and Skateboarding	8353 Conduct of Transit Passengers	13
Jaywalking (Traffic Control Device)	Traffic Bylaw 5590	13
Smoke Tobacco in a Public Place	Prevention of Youth Tobacco Use Act	10
	Youth Tobacco Act	1
One Proof of Payment	8353 Conduct of Transit Passengers	7
Smoking Within 5 Metres of a Door Window of Air Intake of Building	Public Places Bylaw 14614	7
Trespass - Right of Way	8353 Conduct of Transit Passengers	7
Improperly Convey Liquor in a Vehical Within Reach of Occupant	Gaming and Liquor Regulation	6
Printed Material	8353 Conduct of Transit Passengers	5
Smoking on a Patio	Public Places Bylaw 14614	4
Abandoned Vehicle	Traffic Bylaw 5590	3
Display for Sale	8353 Conduct of Transit Passengers	3
Double Parking	Traffic Bylaw 5590	3
Food and Drink - Food	8353 Conduct of Transit Passengers	3
Non-Transferable	8353 Conduct of Transit Passengers	3
Park Within 5 Metres of Intersection	Traffic Bylaw 5590	3
Park on Crosswalk	Traffic Bylaw 5590	3
Possess Operator's Licence Issued to Another	Traffic Safety Act	3
Trespass - Area Closed to Public	8353 Conduct of Transit Passengers	3
Food and Drink - Spill	8353 Conduct of Transit Passengers	2
No Crowding Jostling or Harassing Any Pedestrian on a Highway	Traffic Bylaw 5590	2
Person Obstructing Highway	Traffic Bylaw 5590	2
Throw/Propel object or Dangerous Act likely to cause injury to a person or damage ..	Public Places Bylaw 14614	2
Fire Prevention - Unapproved Receptacle	Parkland Bylaw 2202	1
Illegal Consumption in Vehicle	Gaming and Liquor Act	1
Minor purchasing/obtaining/possessing/consuming liquor	Gaming and Liquor Act	1
Park Within 5 Metres of Stop or Yield Sign	Traffic Bylaw 5590	1
Performances	8353 Conduct of Transit Passengers	1
Place Item in Aisles	8353 Conduct of Transit Passengers	1
Grand Total		12,772

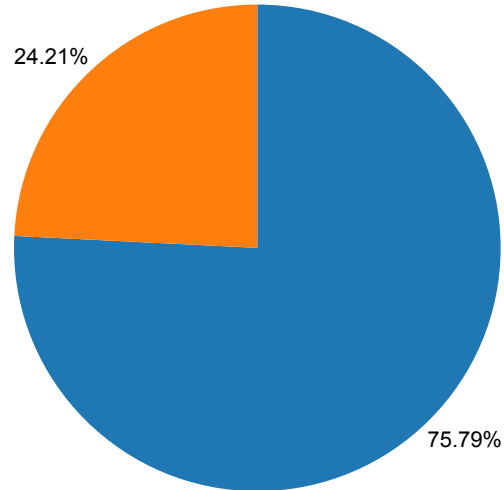
This chart represents all incidents that Transit Peace Officers attended in the month which are not distinguished as being a criminal code violation, a provincial statute violation, or a municipal bylaw infraction.

Total tickets issued:

12,772

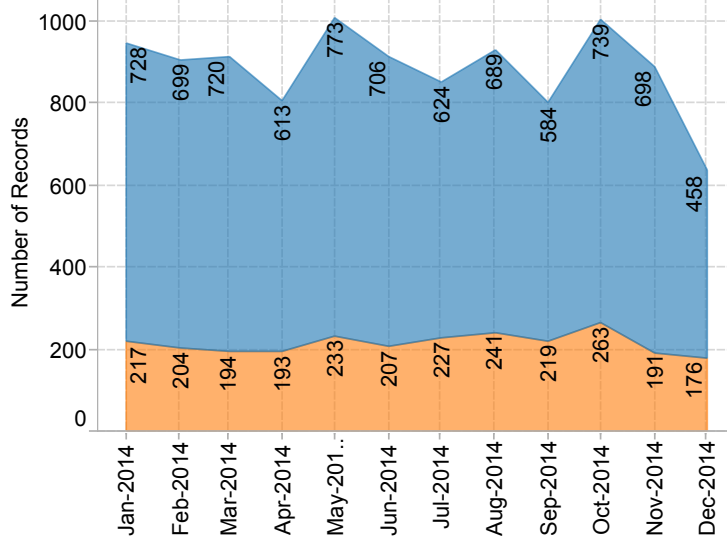
Fare Evasion and Fare Enforcement

Fare Enforcement
2014



STATUS ■ Ticket ■ Warning

YTD Fare Enforcement



Fare Evasion (Past 12 Months)

	Riders Checked	Number of Fare Evaders	Fare Evasion Rate
December	16,499	378	2.29%
November	28,700	616	2.15%
October	34,817	770	2.21%
September	29,381	583	1.98%
August	18,984	629	3.31%
July	25,626	652	2.54%
June	28,536	736	2.58%
May	34,337	775	2.26%
April	26,167	556	2.12%
March	28,448	712	2.50%
February	39,393	888	2.25%
January	34,434	728	2.11%

The percentage of fare evasions is calculated by dividing the number of fare evaders by the total number of patrons checked.

Fare evasion statistics are applicable to checks conducted on the LRT, not on bus vehicles.

Fare enforcement is a measure of how consistent Transit Peace Officers are when ticketing fare evaders as opposed to giving the fare evader a warning (at their discretion).

Fare Evasion Rate:

2.32%

ETS Operator Assault Statistics (via Occupational Health & Safety)

Number of Assaults by Month				Monthly % Change from Previous Year		
	2012	2013	2014	2012	2013	2014
January		3	11		266.7%	
February	2	6	7		200.0%	16.7%
March	3	4	3		33.3%	-25.0%
April	4	5	4		25.0%	-20.0%
May	1	5	5		400.0%	0.0%
June	6	5	8		-16.7%	60.0%
July	1	4	9		300.0%	125.0%
August		2	12			500.0%
September	1	1	8		0.0%	700.0%
October	4	7	7		75.0%	0.0%
November	3	3	8		0.0%	166.7%
December	1	5	13		400.0%	160.0%
Grand Total	26	50	95		92.3%	90.0%

The following statistics were generated using ETS Occupational Health & Safety (OH&S) incident reports and include incidents that involved ETS Bus and DATS Operators. Because of the data entry process, only data up to the previous month is finalized and available. Data provided by OH&S is dynamic in nature and the count of incidents may change as further information becomes available.

YTD % Difference:

92.308% **90.000%**

Assault Types				
		2012	2013	2014
Level 1 - Assault	Assaults - Other	12		
	Assaults And Violent Acts	5		2
	Level 1 - Assault	5	24	52
	Level 1 - Assault: Spitting	3	17	19
Level 2 - Assault with a weapon or causing bodily harm	Level 2 - Assault with a weapon		3	3
Verbal Threats	Verbal Threats	1	6	19
Grand Total		26	50	95