

SEE PLAN NO. ELLE 083 A06  
2008 ELLERSLIE ROAD DETAIL PLAN  
INCLUDES ULTIMATE

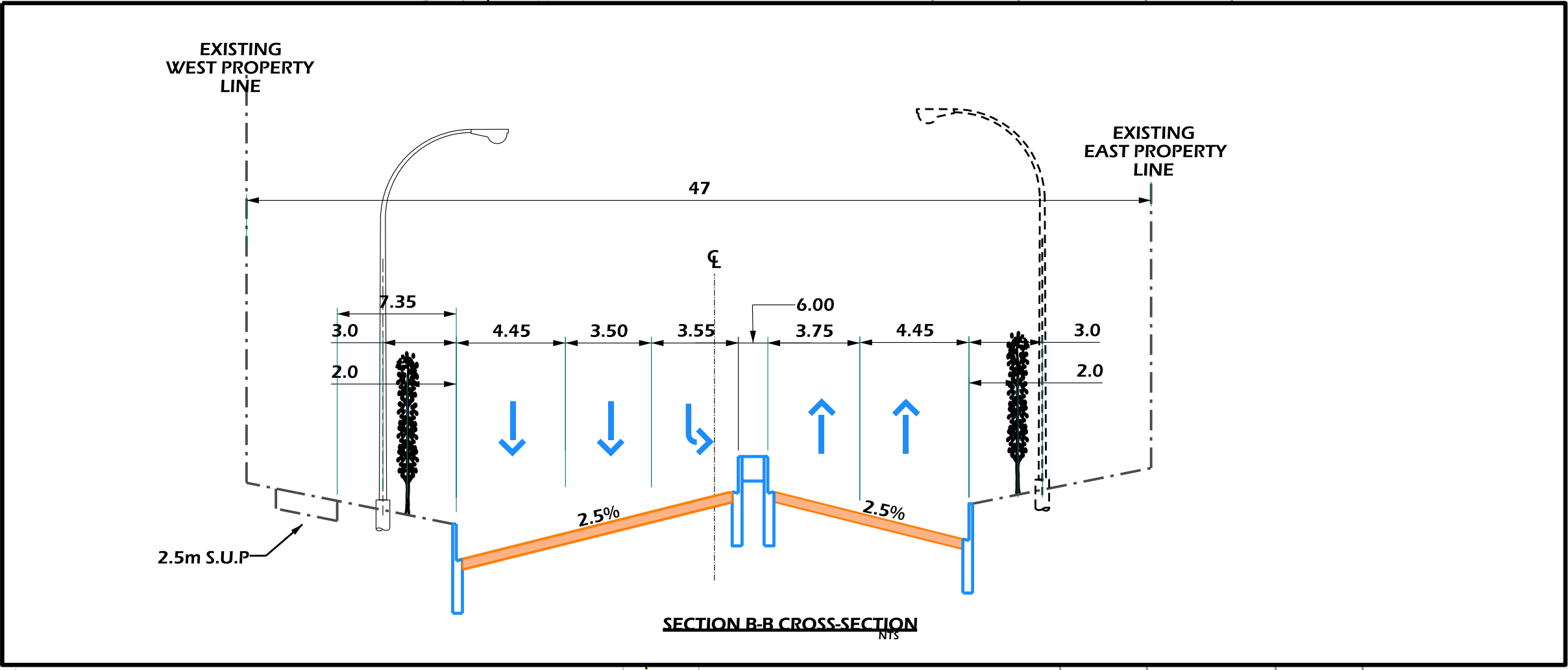
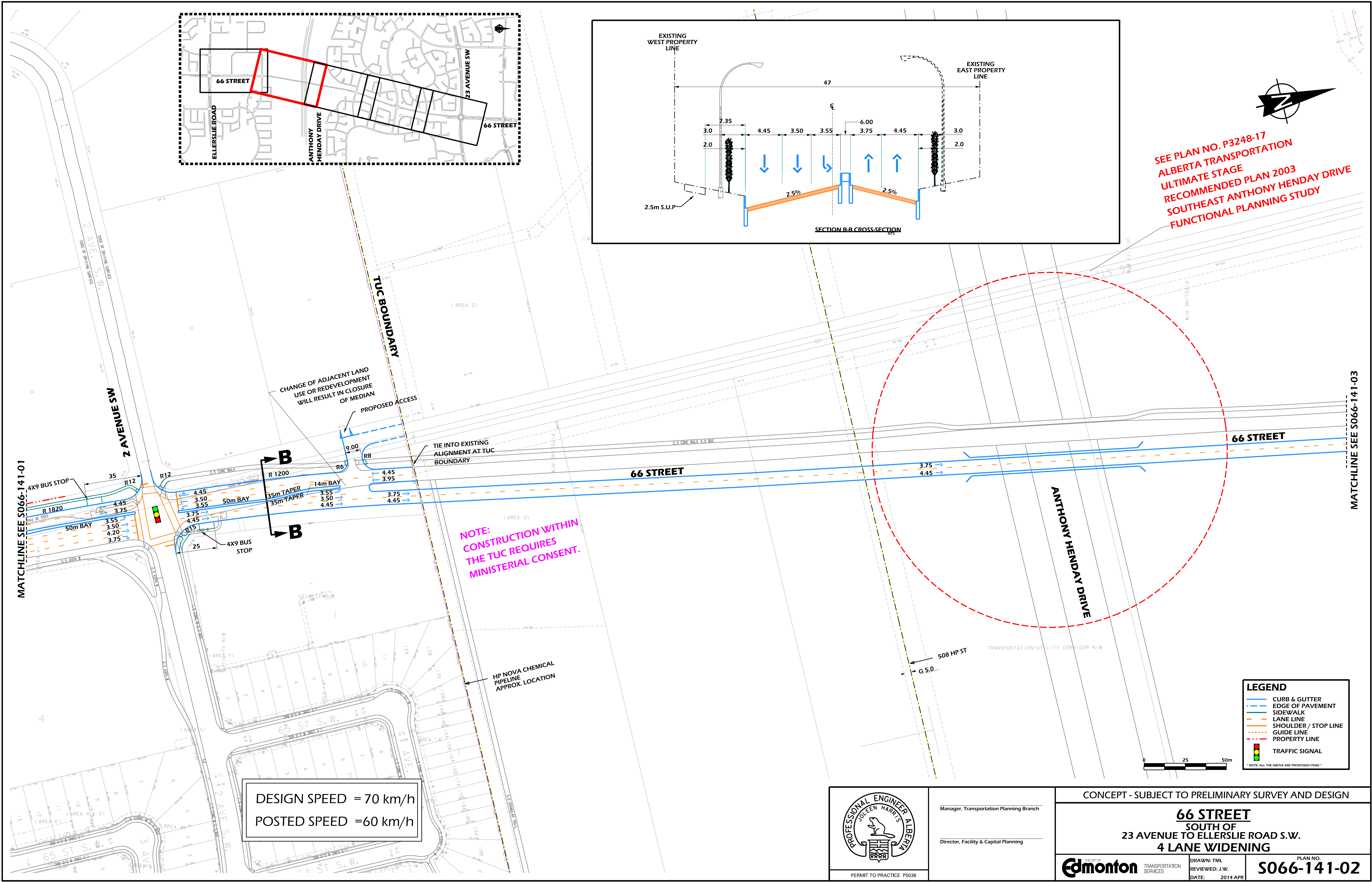
DESIGN SPEED = 70 km/h  
POSTED SPEED = 60 km/h

**LEGEND**

- CURB & GUTTER
- EDGE OF PAVEMENT
- SIDEWALK
- LANE LINE
- SHOULDER / STOP LINE
- GUIDE LINE
- PROPERTY LINE
- TRAFFIC SIGNAL

\* NOTE ALL THE ABOVE ARE PROPOSED ITEMS \*

	Manager, Transportation Planning Branch	CONCEPT - SUBJECT TO PRELIMINARY SURVEY AND DESIGN	
	Director, Facility & Capital Planning	<b>66 STREET</b> SOUTH OF 23 AVENUE TO ELLERSLIE ROAD S.W. 4 LANE WIDENING	
		<b>Edmonton</b> TRANSPORTATION SERVICES	DRAWN: TML REVIEWED: J.W. DATE: 2014 APR



SEE PLAN NO. P3248-17  
ALBERTA TRANSPORTATION  
ULTIMATE STAGE  
RECOMMENDED PLAN 2003  
SOUTHEAST ANTHONY HENDAY DRIVE  
FUNCTIONAL PLANNING STUDY

NOTE:  
CONSTRUCTION WITHIN  
THE TUC REQUIRES  
MINISTERIAL CONSENT.

DESIGN SPEED = 70 km/h  
POSTED SPEED = 60 km/h

LEGEND

CURB & GUTTER

EDGE OF PAVEMENT

SIDEWALK

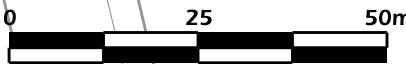
LANE LINE

SHOULDER / STOP LINE

GUIDE LINE

PROPERTY LINE

TRAFFIC SIGNAL



PROFESSIONAL ENGINEER ALBERTA  
JOLEEN HARRIS  
PERMIT TO PRACTICE P5038

Manager, Transportation Planning Branch

Director, Facility & Capital Planning

CONCEPT - SUBJECT TO PRELIMINARY SURVEY AND DESIGN

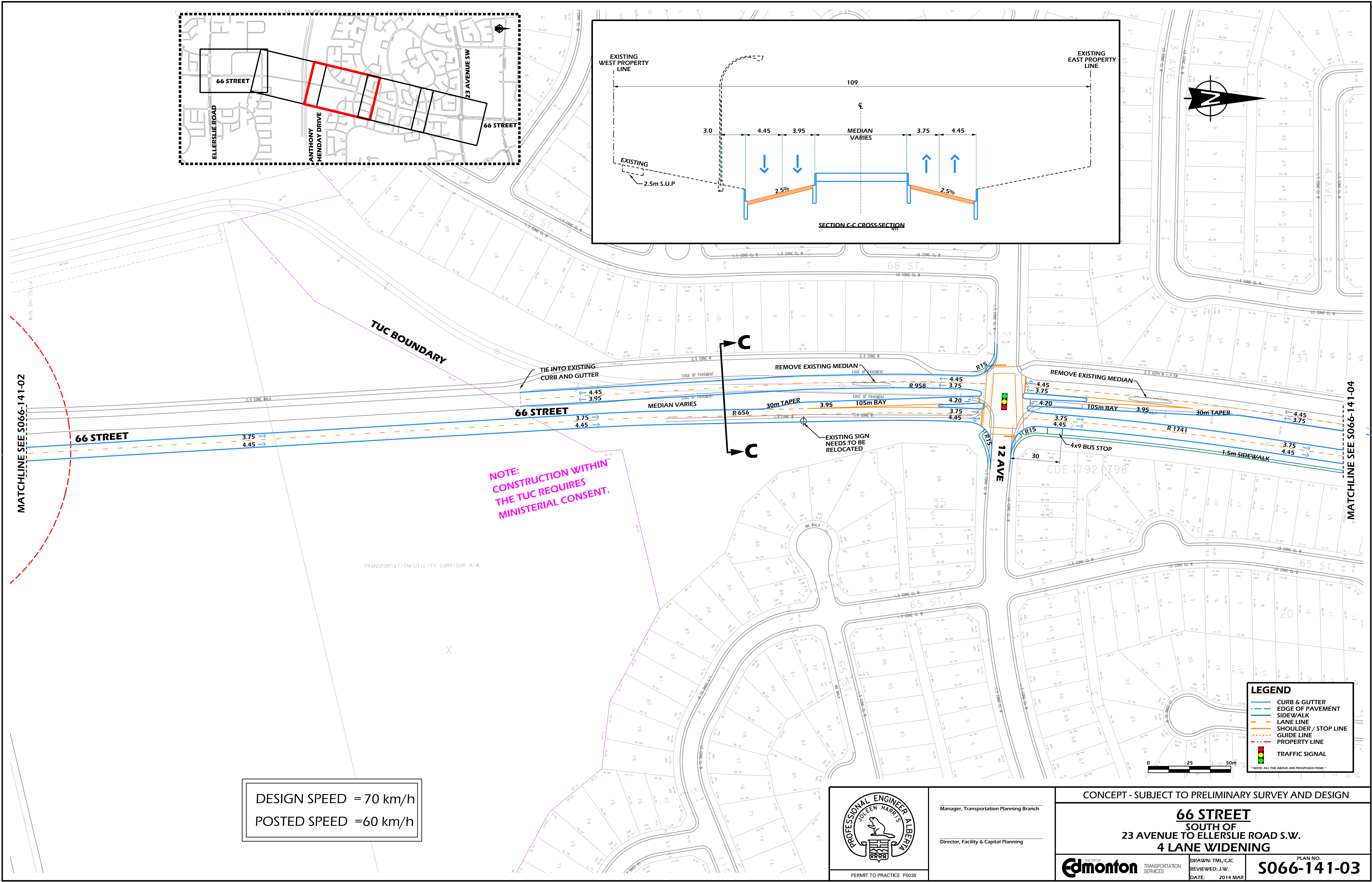
66 STREET  
SOUTH OF  
23 AVENUE TO ELLERSLIE ROAD S.W.  
4 LANE WIDENING

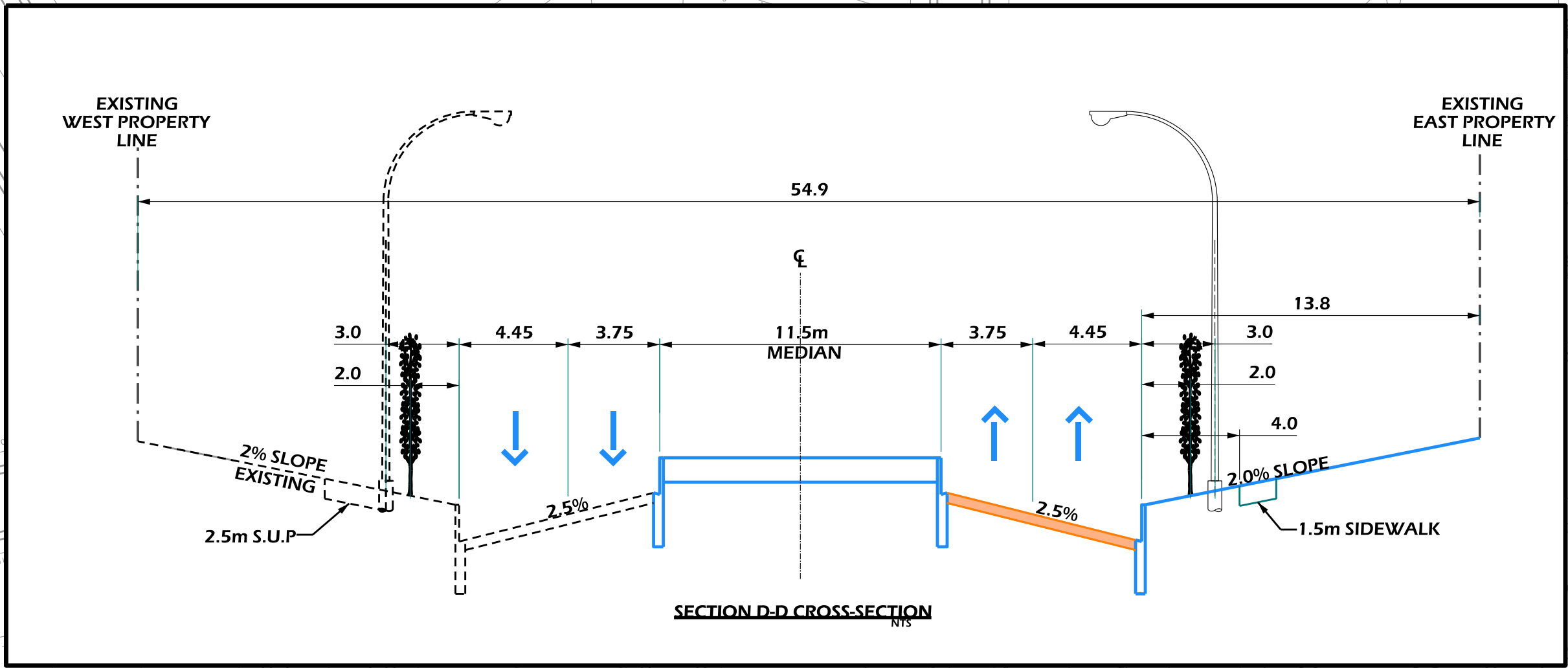
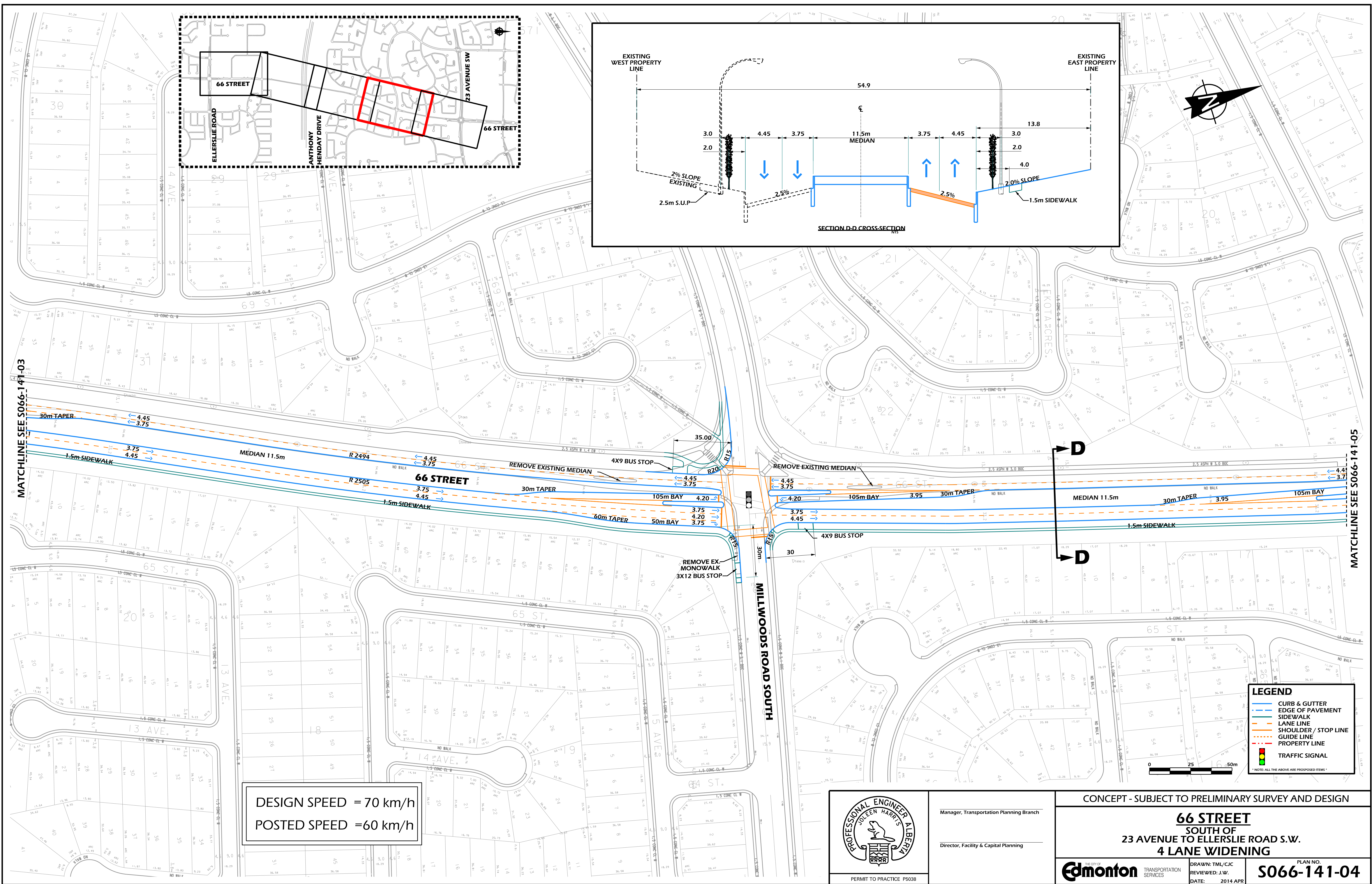
Edmonton  
TRANSPORTATION SERVICES

DRAWN: TML  
REVIEWED: J.W.  
DATE: 2014 APR

PLAN NO.  
S066-141-02

S066-121-02\_concept.dgn Default 04/30/2014 1:39:47 PM by FCP





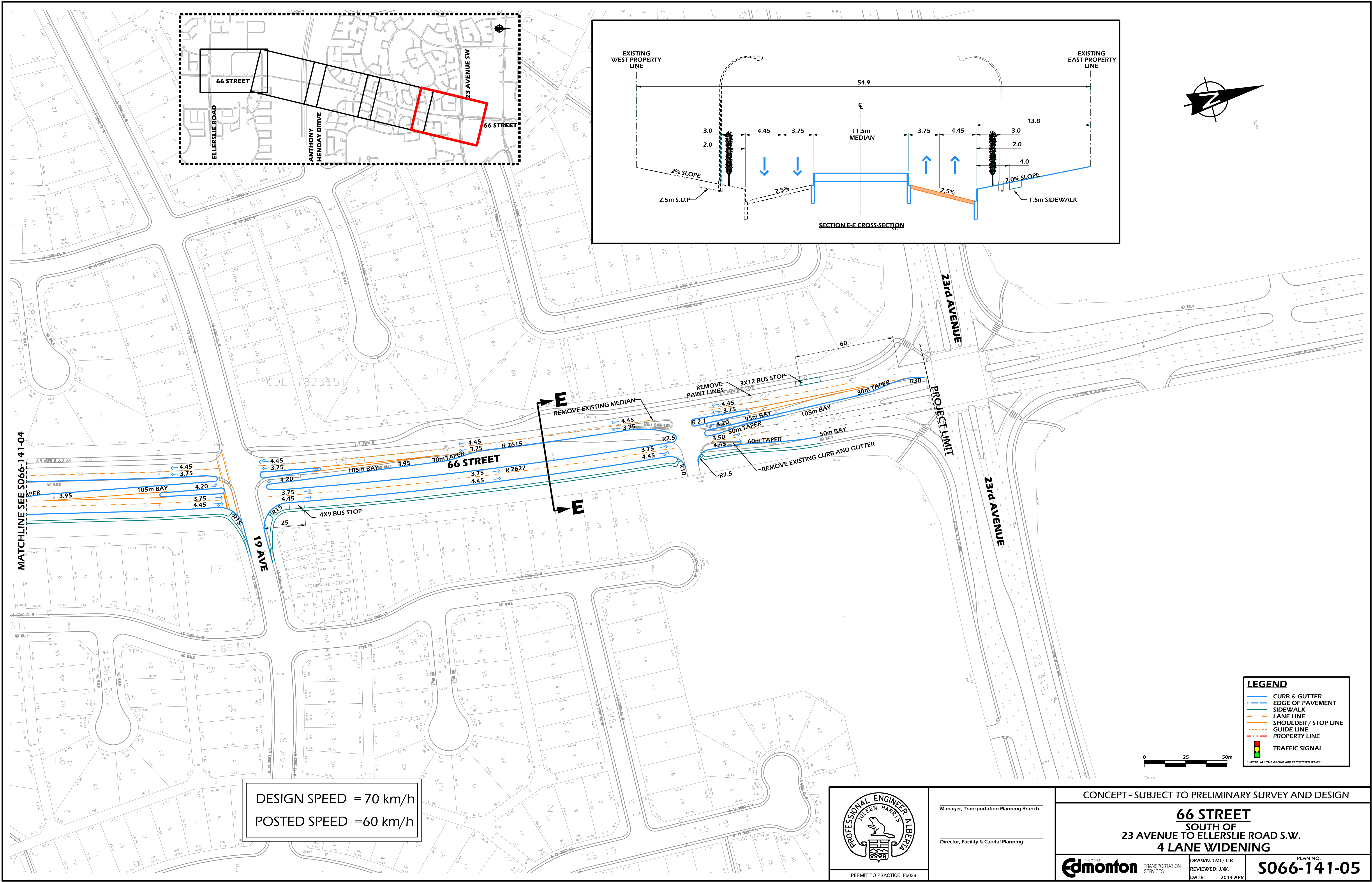
DESIGN SPEED = 70 km/h  
POSTED SPEED = 60 km/h

**LEGEND**

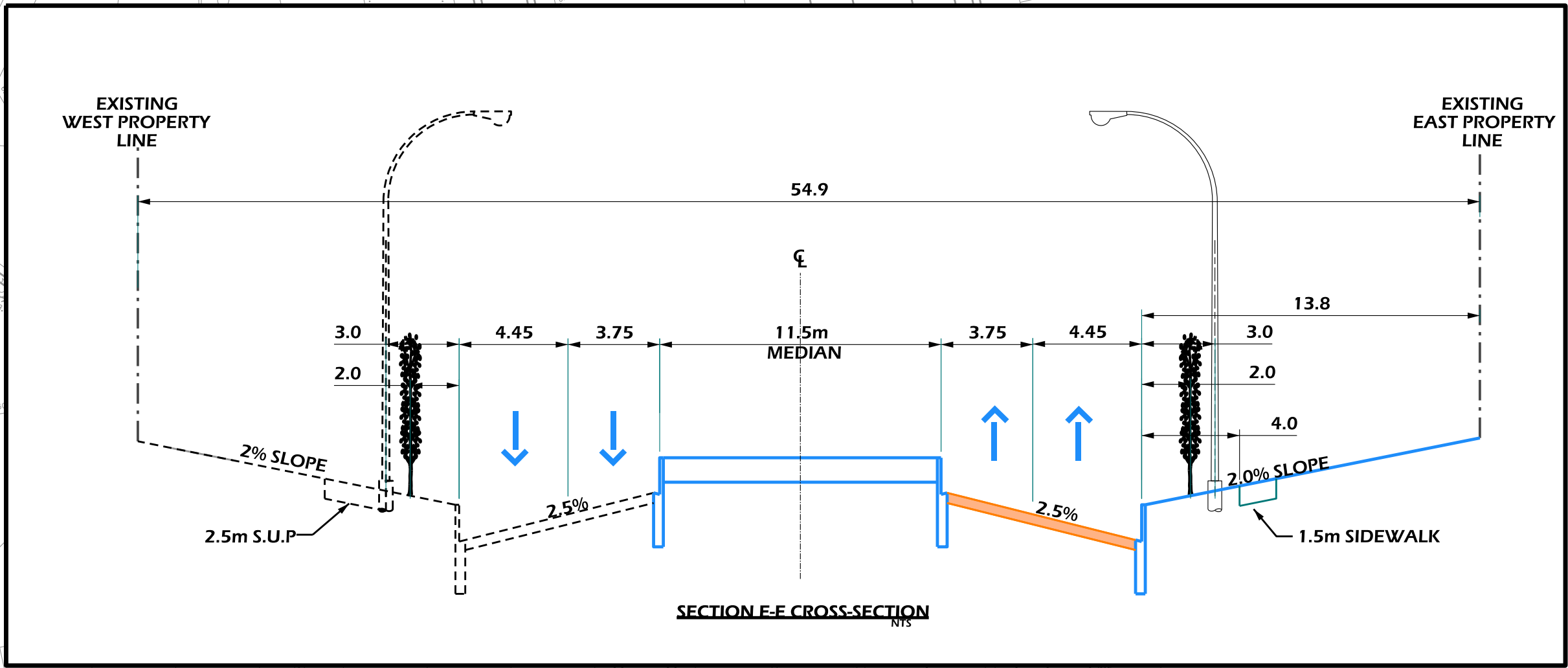
- CURB & GUTTER
- EDGE OF PAVEMENT
- SIDEWALK
- LANE LINE
- SHOULDER / STOP LINE
- GUIDE LINE
- PROPERTY LINE
- TRAFFIC SIGNAL

NOTE: ALL THE ABOVE ARE PROPOSED ITEMS

	Manager, Transportation Planning Branch	
	Director, Facility & Capital Planning	
	CONCEPT - SUBJECT TO PRELIMINARY SURVEY AND DESIGN	
<b>66 STREET</b> SOUTH OF 23 AVENUE TO ELLERSLIE ROAD S.W. 4 LANE WIDENING		
	TRANSPORTATION SERVICES	DRAWN: TML/CJC REVIEWED: J.W. DATE: 2014 APR
		PLAN NO. <b>S066-141-04</b>



DESIGN SPEED = 70 km/h  
POSTED SPEED = 60 km/h



**LEGEND**

- CURB & GUTTER
- EDGE OF PAVEMENT
- LANE LINE
- SHOULDER / STOP LINE
- GUIDE LINE
- PROPERTY LINE
- TRAFFIC SIGNAL

\* NOTE: ALL THE ABOVE ARE PROPOSED ITEMS \*

PROFESSIONAL ENGINEER ALBERTA  
JOEEN HARRIS  
PERMIT TO PRACTICE P5038

Manager, Transportation Planning Branch  
Director, Facility & Capital Planning

CONCEPT - SUBJECT TO PRELIMINARY SURVEY AND DESIGN

**66 STREET**  
SOUTH OF  
23 AVENUE TO ELLERSLIE ROAD S.W.  
4 LANE WIDENING

Edmonton TRANSPORTATION SERVICES  
DRAWN: TML/ CJC  
REVIEWED: J.W.  
DATE: 2014 APR

PLAN NO.  
**S066-141-05**