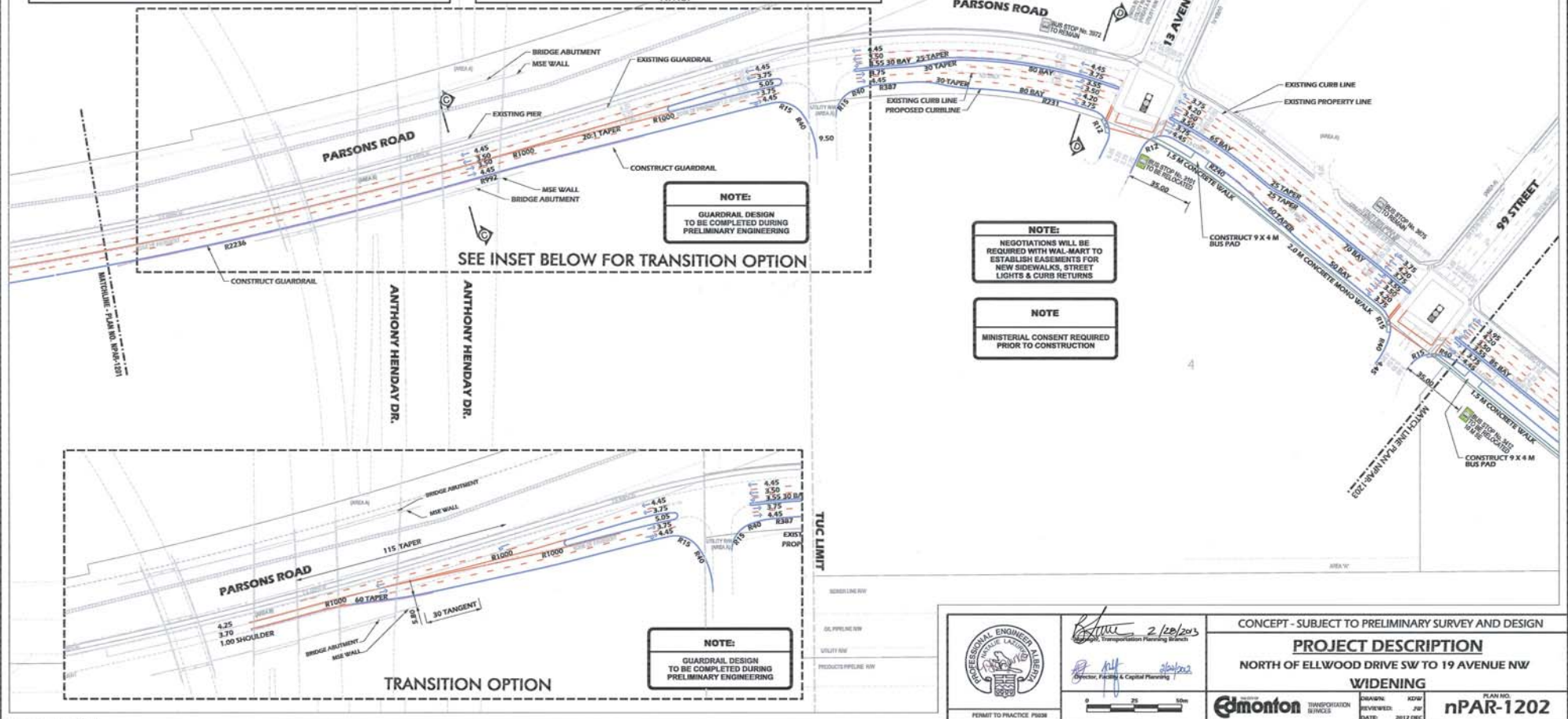


DESIGN SPEED = 70 km/h  
S OF 13 AVENUE  
POSTED SPEED = 60 km/h  
S OF 13 AVENUE  
DESIGN SPEED = 60 km/h  
N OF 13 AVENUE  
POSTED SPEED = 50 km/h  
N OF 13 AVENUE



	2/20/2013 Director, Planning & Capital Planning	CONCEPT - SUBJECT TO PRELIMINARY SURVEY AND DESIGN	
	<b>PROJECT DESCRIPTION</b> NORTH OF ELLWOOD DRIVE SW TO 19 AVENUE NW		
	<b>WIDENING</b>		
	0 20 40m TRANSPORTATION SERVICES	REVIEWED: JUP DATE: 2012 DEC	PLAN NO: <b>nPAR-1202</b>

