

THE WAY WE MOVE

# Walterdale Bridge Replacement

TRANSFORMING | **EDMONTON**

BRINGING OUR CITY VISION TO LIFE



# Agenda

- Introduction
- Background and context
- Recommended bridge design and associated reconfigured roadways and multi-use trails
- Question and answer session
- Concluding remarks

# Welcome

- Meeting purpose
  - Present recommended arch bridge design and how the roadways, pedestrian, cyclist and multi-use trails will connect to the Walterdale Bridge replacement
  - Answer your questions and receive your feedback about the recommendations
  - Review project timelines

# Project Timelines

- **Schedule**

- |                              |                           |
|------------------------------|---------------------------|
| – Preliminary Design         | July 2011 - February 2012 |
| – Detailed Design            | February - November 2012  |
| – Construction               | Spring 2013 – Winter 2015 |
| – Bridge open to traffic     | Fall 2015                 |
| – Removal of existing bridge | 2015/2016                 |

# Project Background

- Project Overview
  - Existing bridge is near end of useful life
  - Important link to downtown and river valley
  - New alignment for replacement bridge
  - Functional signature bridge replacement
  - Project includes approach roadways and trail connections
  - Project budget \$132 million

# Project Background

- **Fieldwork completed**
  - Geotechnical test holes and preliminary reporting
  - Historical Resources Impact Assessments (HRIA) test pits
  - Detailed topographic surveys
  - Field utility locates and assessments

# Consultation to Date

- Conducted meetings/interviews with stakeholder groups and individuals during concept planning
- Meetings with Aboriginal Elders, including an Elders gathering and an on-site ceremony (October 2010)
- Public Open Houses held November 18, 2010 and March 22, 2011 to gather input and conducted follow-up with attendees requiring further information
- New set of meetings with key stakeholder groups in November/December 2011
- Stakeholder Input Panel meeting December 8, 2011
- Ongoing meetings with key stakeholder groups as required (March 2011 to November 2011)



# Aboriginal Consultation

- Preliminary interviews in support of a Statement of Justification (SoJ) for Historical Resources Act (HRA) clearance
- Community consultation and engagement as per HRA clearance requirements and City of Edmonton identified needs
- Implementation of identified community concerns during design and construction



## Other Initiatives

- West Rosedale Urban Design Plan
- EPCOR Generating Station Repurposing
- Kinsmen Sports Centre Master Plan
- Queen Elizabeth Park Master Plan

# TRANSFORMING | EDMONTON

BRINGING OUR CITY VISION TO LIFE

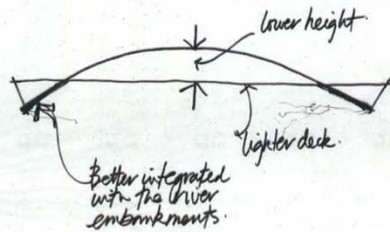


Concept Planning

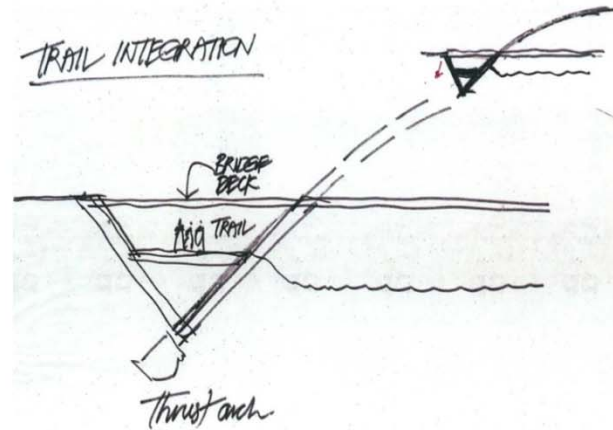
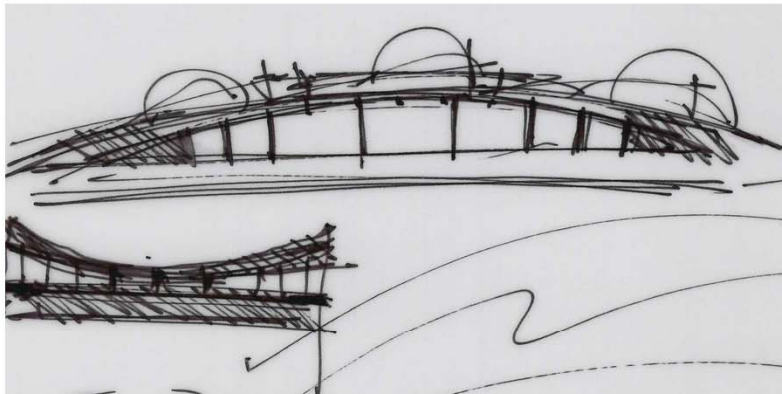
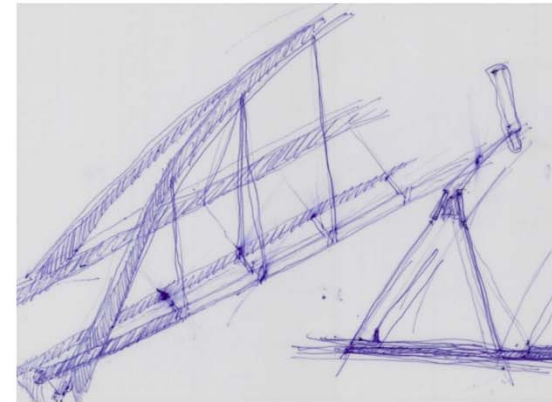
# TRANSFORMING | EDMONTON

BRINGING OUR CITY VISION TO LIFE

THRUST ARCH — "SIMPLE ELEGANCE"



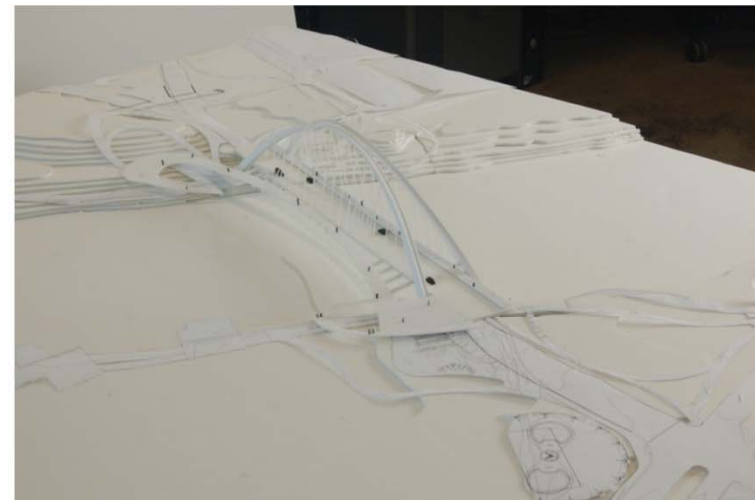
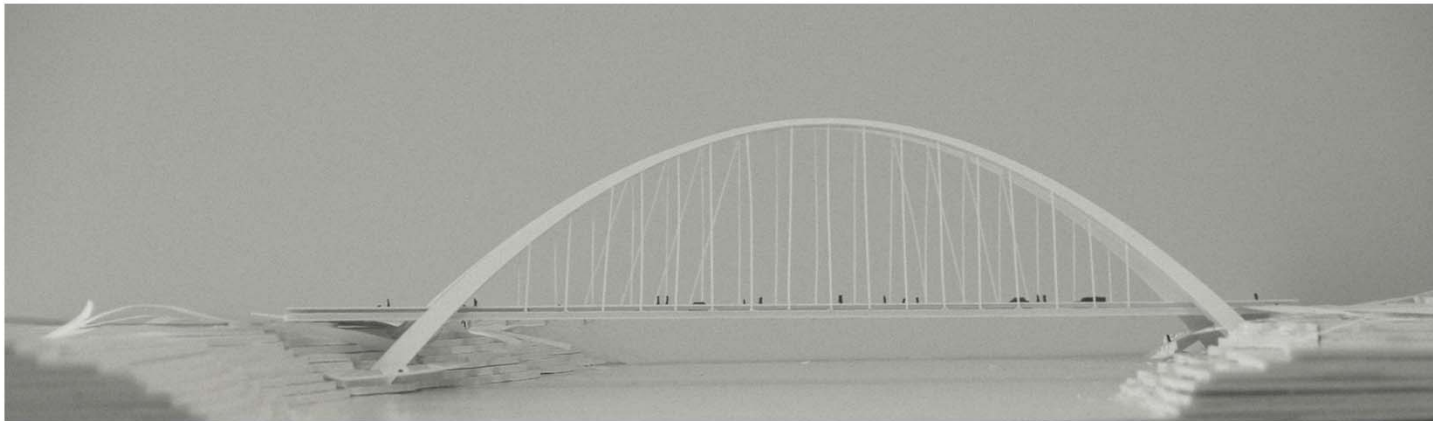
\* MORE DYNAMIC AND ICONIC.  
CLEAN LINES.



"...a unique structure located in the heart of Edmonton's river Valley, respecting the setting, and creating a landmark gateway to the city's downtown."

# TRANSFORMING | EDMONTON

BRINGING OUR CITY VISION TO LIFE



Preliminary Design

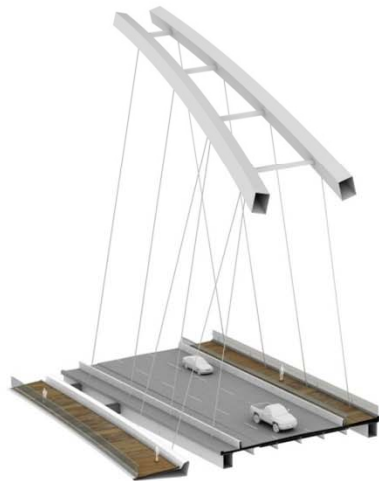
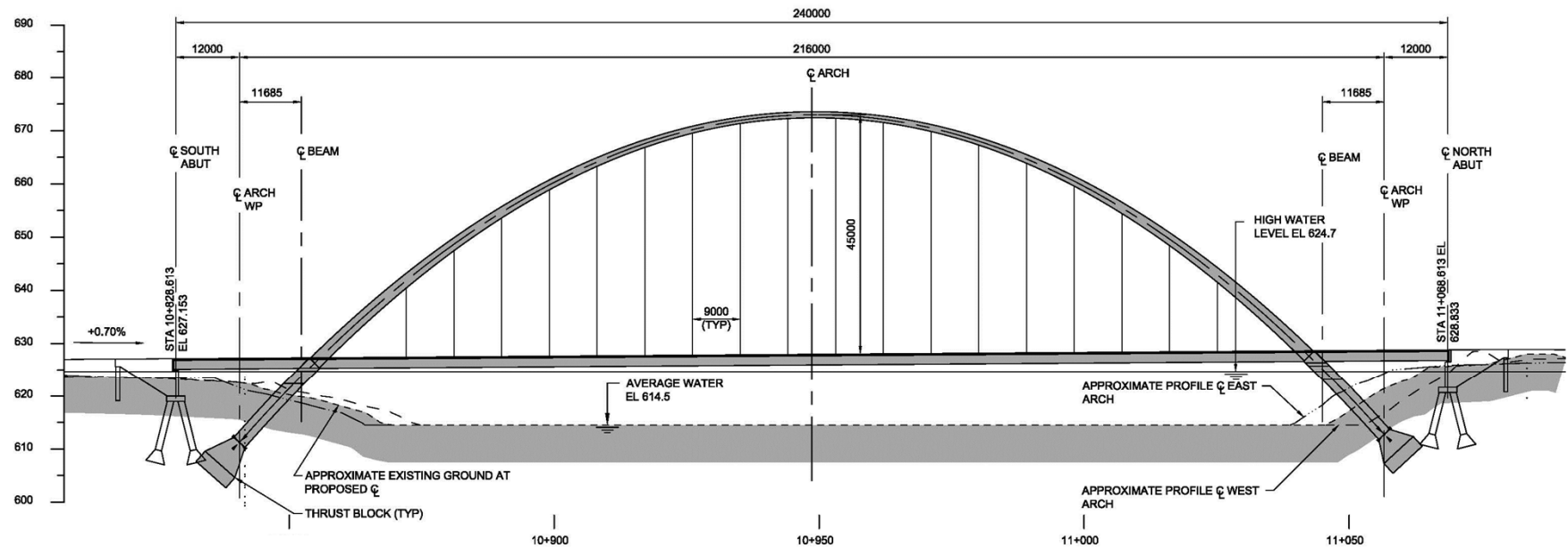




Recommended Design

# TRANSFORMING | EDMONTON

BRINGING OUR CITY VISION TO LIFE





# TRANSFORMING | EDMONTON

BRINGING OUR CITY VISION TO LIFE





# TRANSFORMING | EDMONTON

BRINGING OUR CITY VISION TO LIFE



# TRANSFORMING | EDMONTON

BRINGING OUR CITY VISION TO LIFE





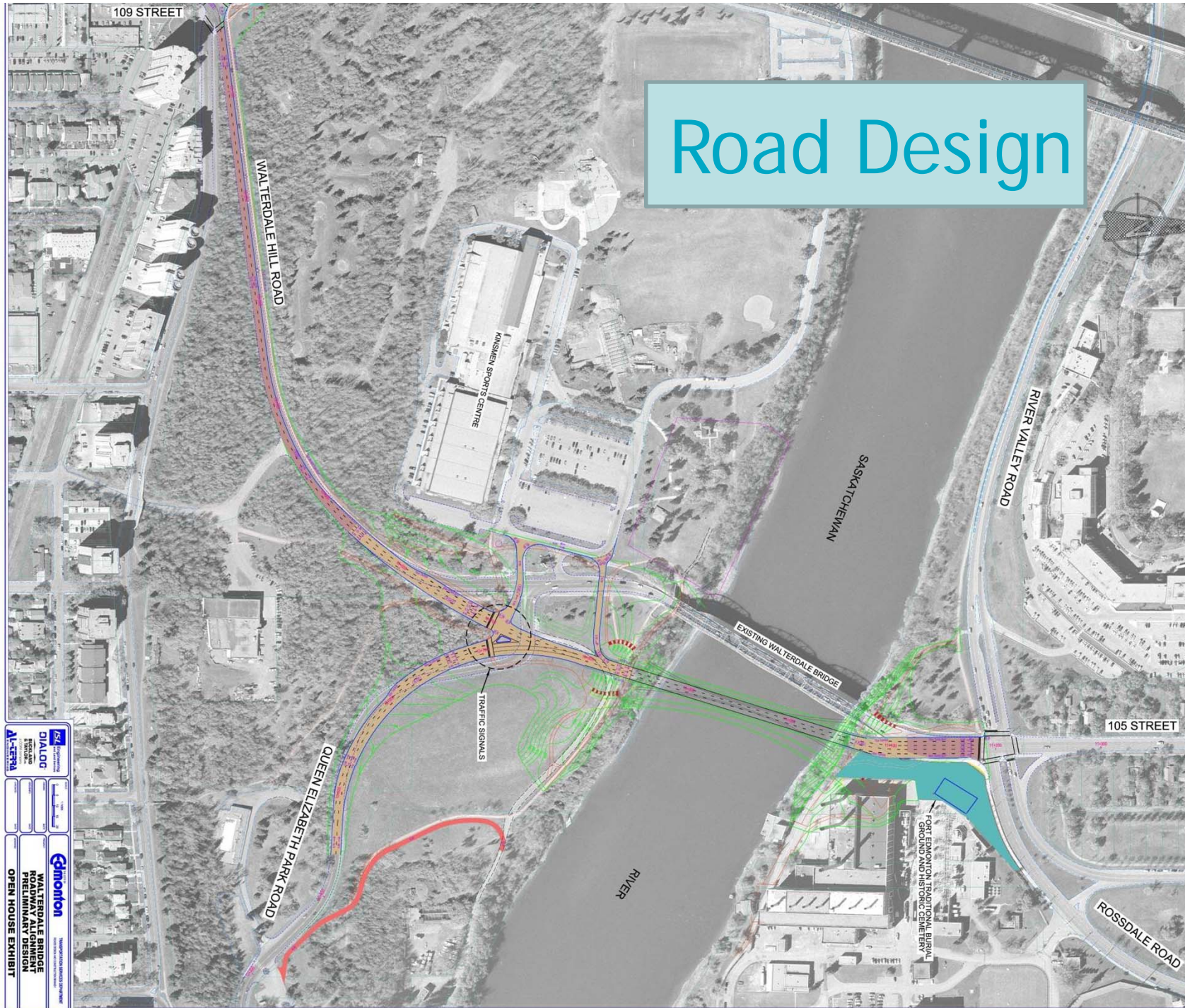
# TRANSFORMING | EDMONTON

BRINGING OUR CITY VISION TO LIFE



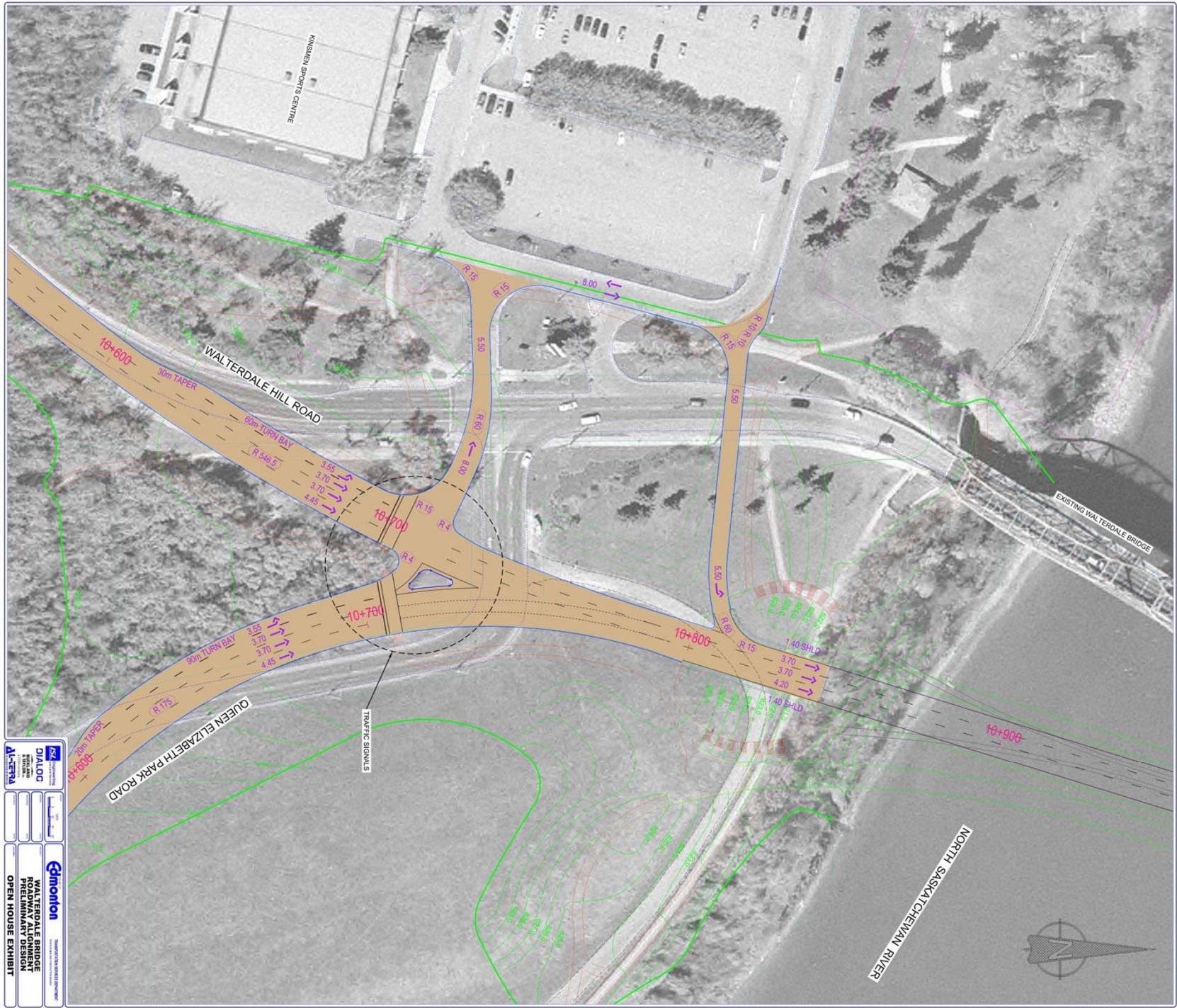


# Road Design

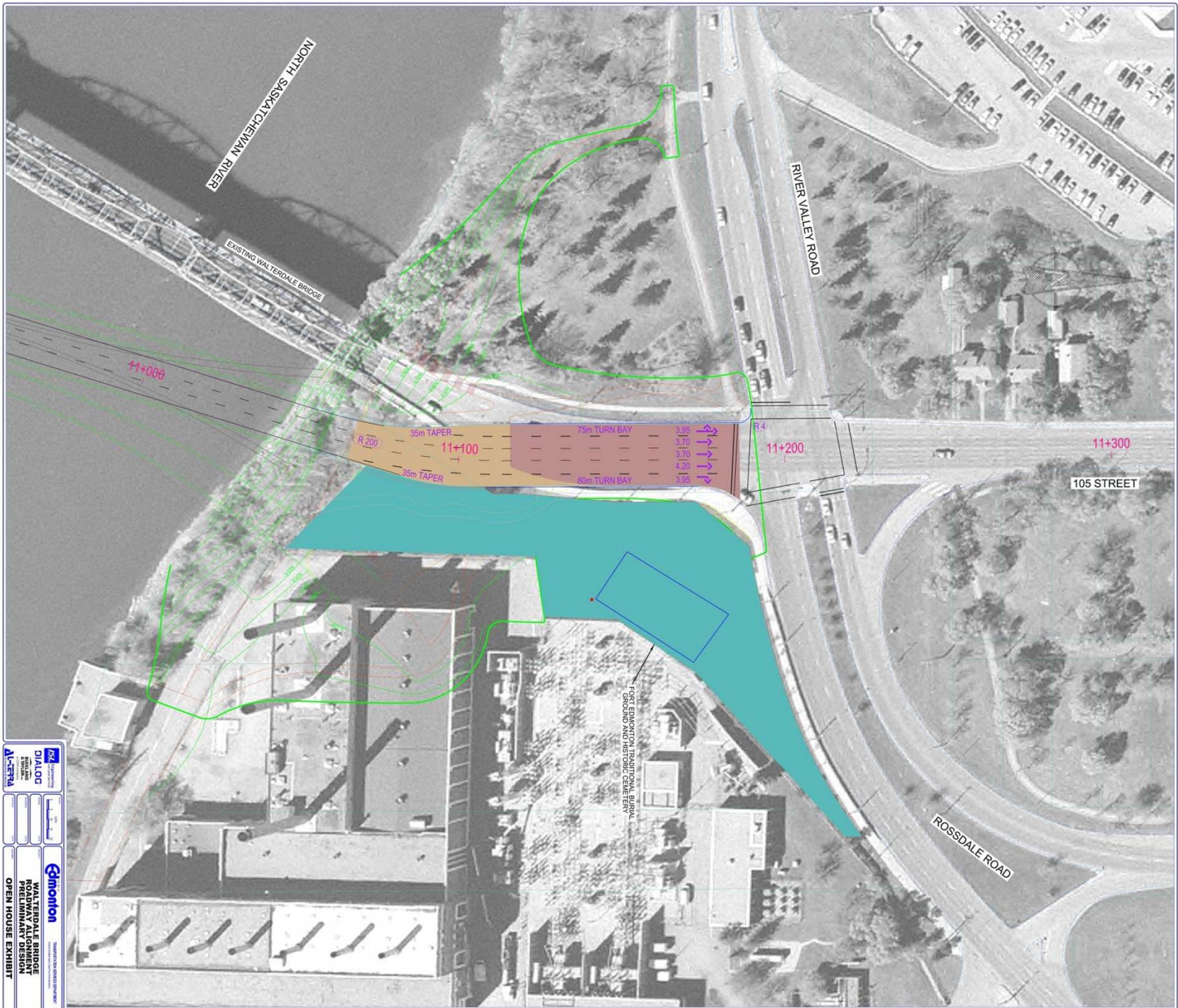


WALTERDALE BRIDGE	
PRELIMINARY DESIGN	
OPEN HOUSE EXHIBIT	







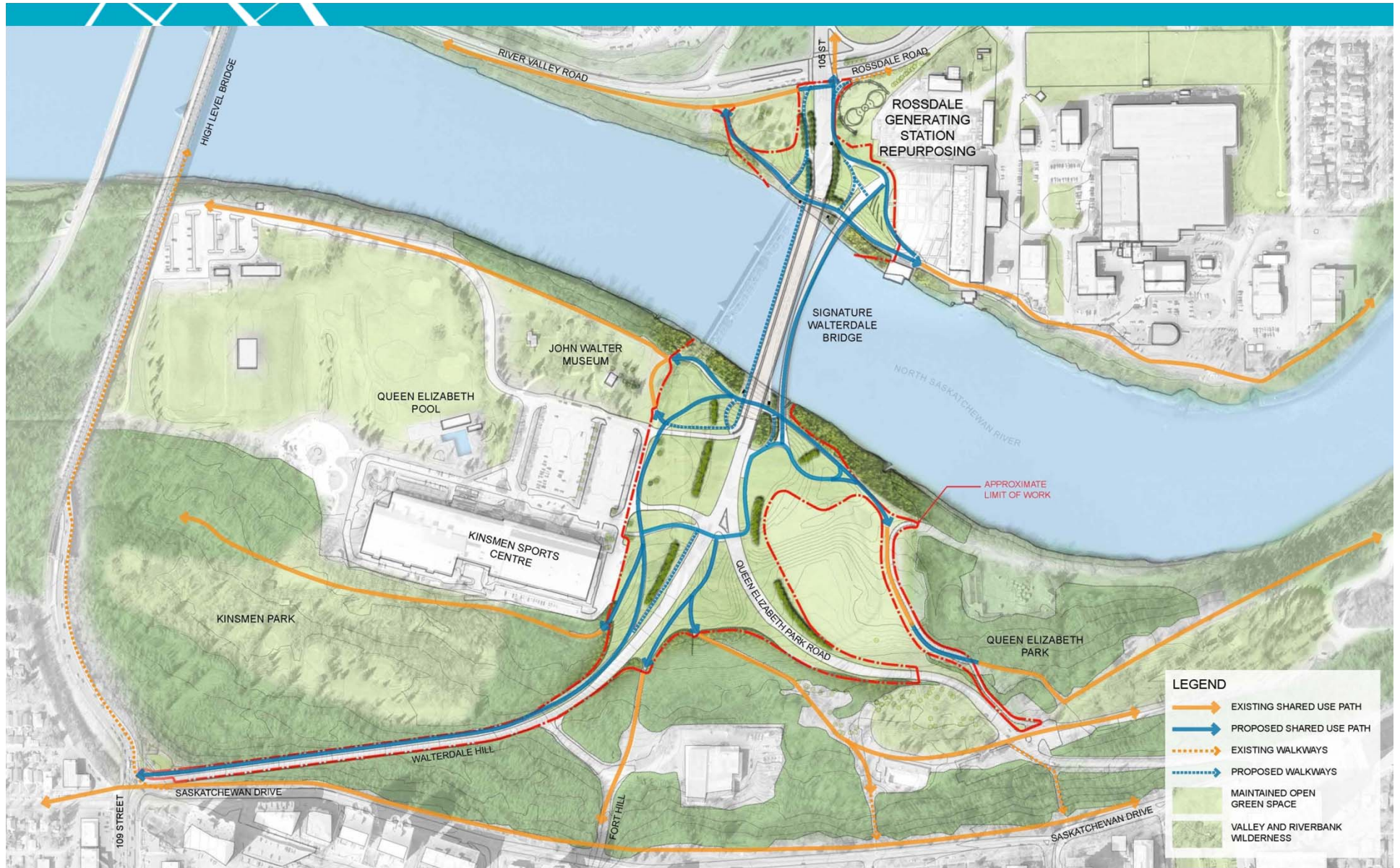


WALTERDALE BRIDGE  
PRELIMINARY DESIGN  
OPEN HOUSE EXHIBIT

AL-ETRA

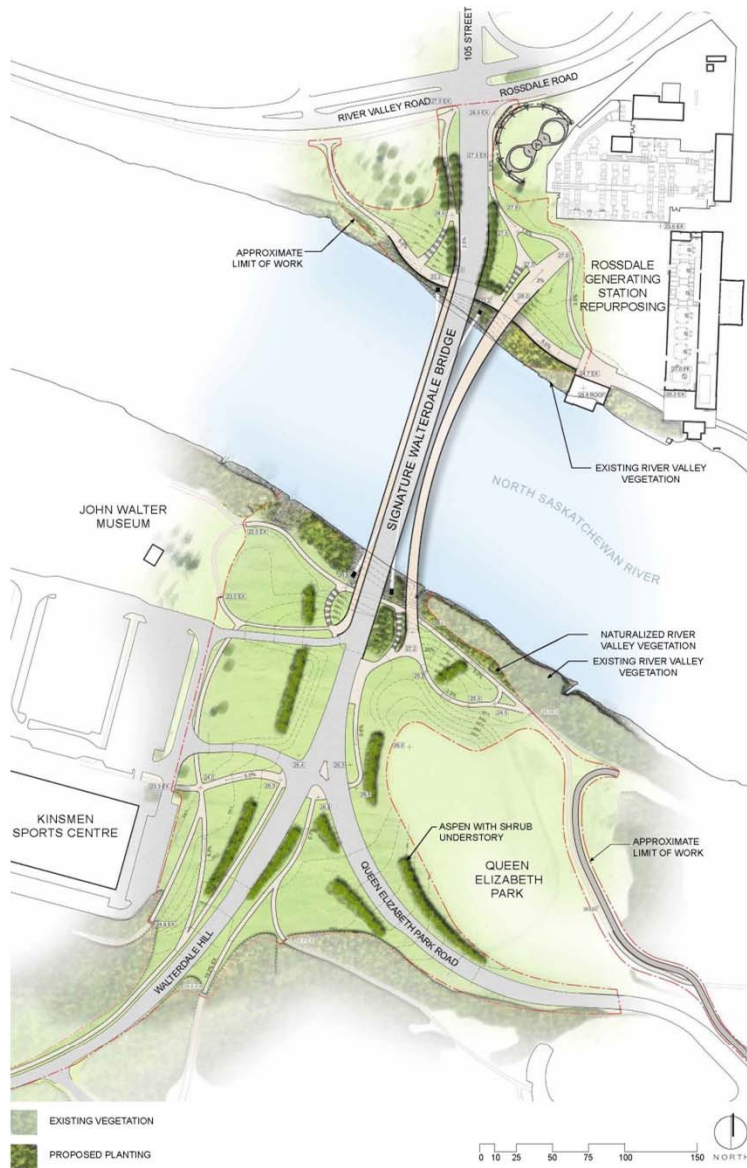
DIALOG





# Multi-Use Trails





Landscaping Plan



Potential Enhancements Plan

## Q & A

- **To ensure everyone has a chance to be heard:**
  - Each speaker will have **2 minutes** for their question or comment. **1 minute** is allowed for **1 follow-up** question.
  - 3 people will be recognized for each round of questions; resource persons with microphones will go to those people.
  - Three rounds of questions will be conducted
  - Additional questions from same person will not be recognized until no new participants are wanting to ask questions.
  - Please use microphones, as this session is being recorded.
  - If you are not able to ask your question during the Q&A, please bring it to project staff after the presentation.

## Closing

- Thank you for attending
- Please visit the display area to view the recommended bridge design and associated reconfigured roadways and multi-use trails
- Please fill out the feedback form
- All information from tonight will be available at [www.edmonton.ca/walterdalebridge](http://www.edmonton.ca/walterdalebridge) tomorrow