



# Ormsby Place Traffic Calming Pilot Project

## *About the project*

Traffic shortcutting is an issue in communities, with residents expressing concerns about safety and their quality of life. City Council has heard these concerns, and in response, has asked Transportation Services to explore a streamlined process to address localized and emerging traffic shortcutting and speeding issues.

### *What does this mean for your neighbourhood?*

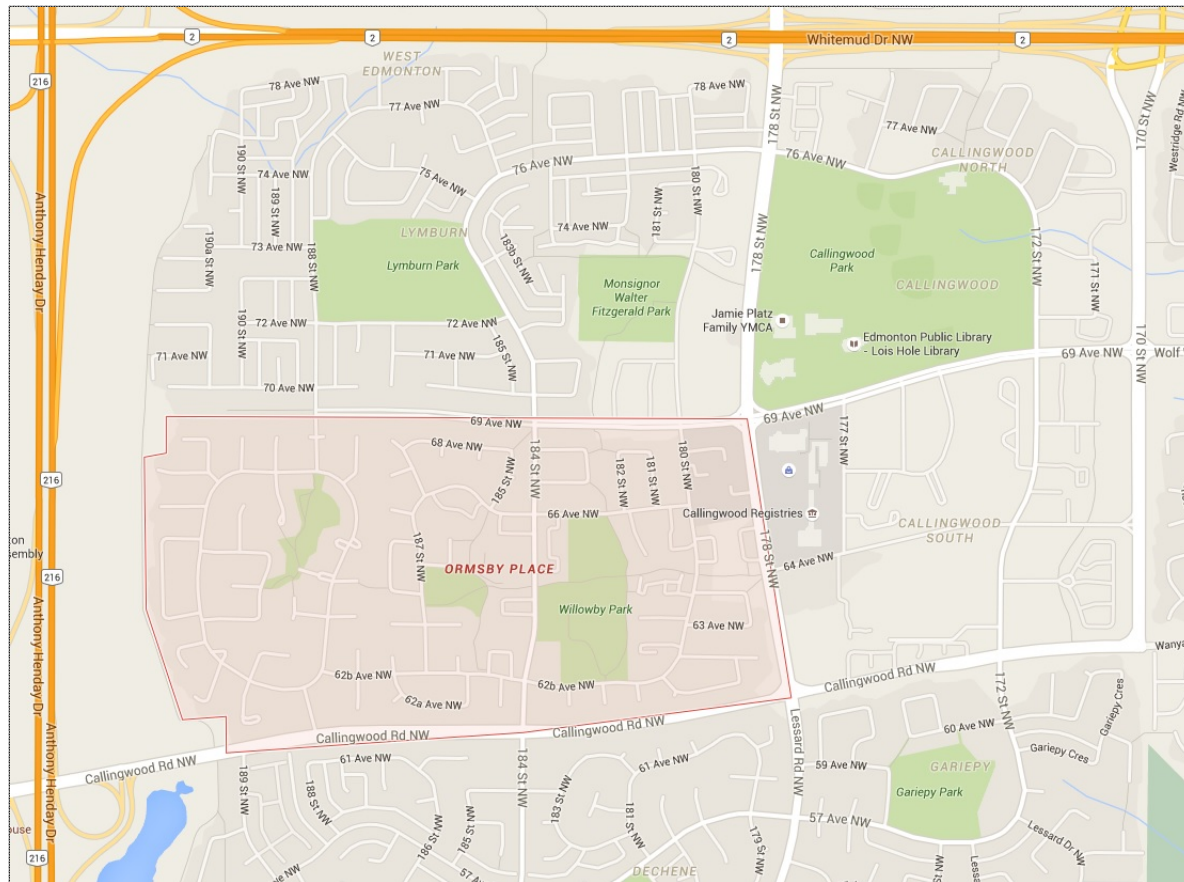
Your neighbourhood is one of four communities chosen for the pilot project based on resident concerns regarding traffic volume and speeding. In the September 2015, through movements were banned at the intersection of 69 Avenue and 188 Street (except ETS/Bicycles) and driver feedback signs were installed on Ormsby Road East for speed awareness.

### *What is the next step?*

The Traffic Shortcutting Pilot Project is focused on evaluating the public involvement process along with the traffic calming measures. Your feedback will be gathered and included in the report back to City Council's Transportation Committee on March 23<sup>rd</sup>.

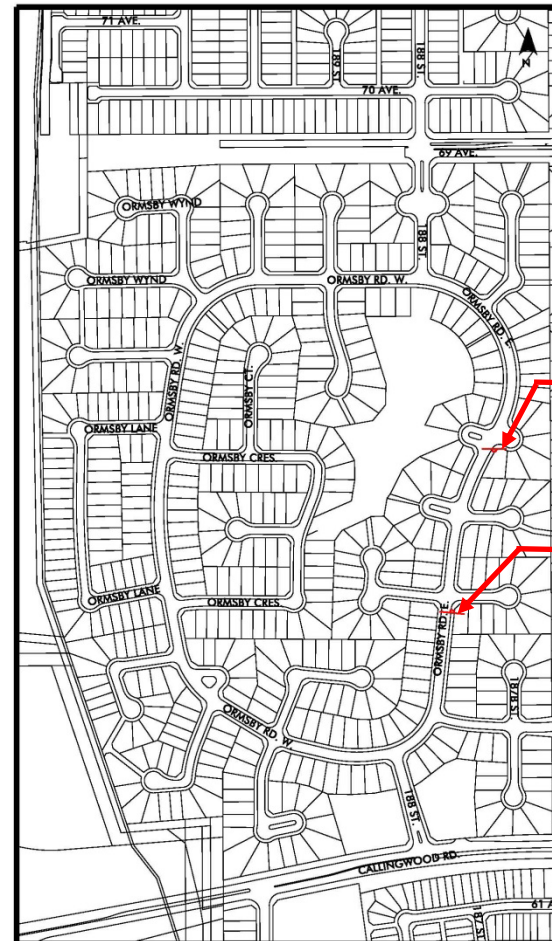
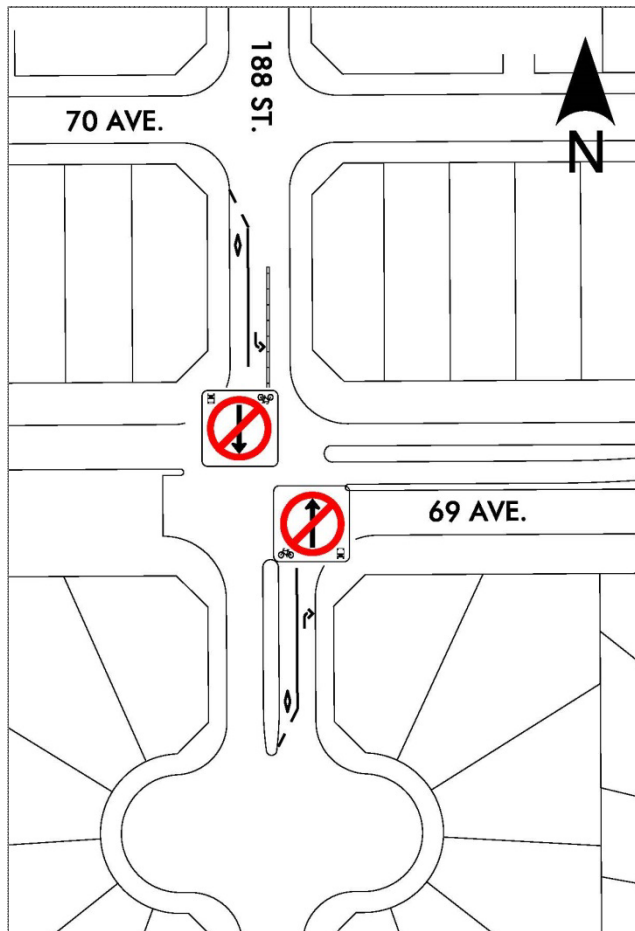
# Ormsby Place Traffic Calming Pilot Project

## Ormsby Place Neighbourhood



# Ormsby Place Traffic Calming Pilot Project

## Traffic Calming Measures



DRIVER FEEDBACK SIGN  
FOR SOUTHBOUND  
TRAFFIC

DRIVER FEEDBACK SIGN  
FOR NORTHBOUND  
TRAFFIC



# Ormsby Place Traffic Calming Pilot Project

## Traffic Calming Measures



Northbound  
69 Avenue and 188 Street



Southbound  
69 Avenue and 188 Street

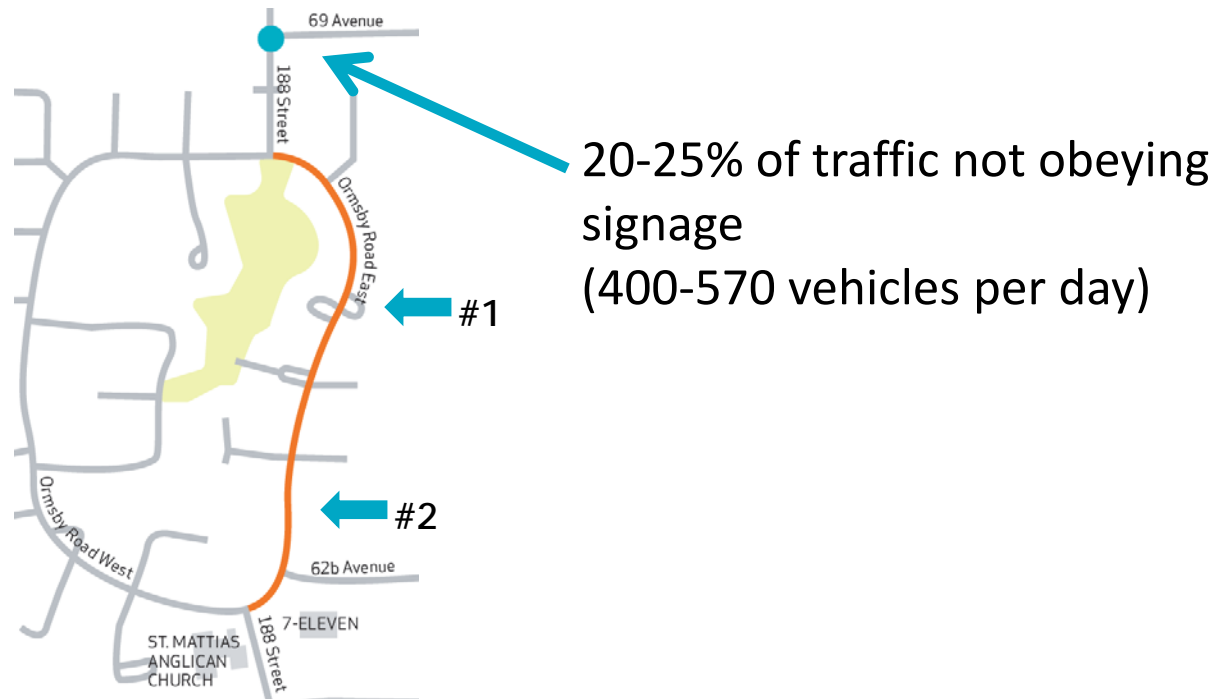
# Ormsby Place Traffic Calming Pilot Project

## Driver Feedback Sign



# Ormsby Place Traffic Calming Pilot Project

## Traffic Volumes

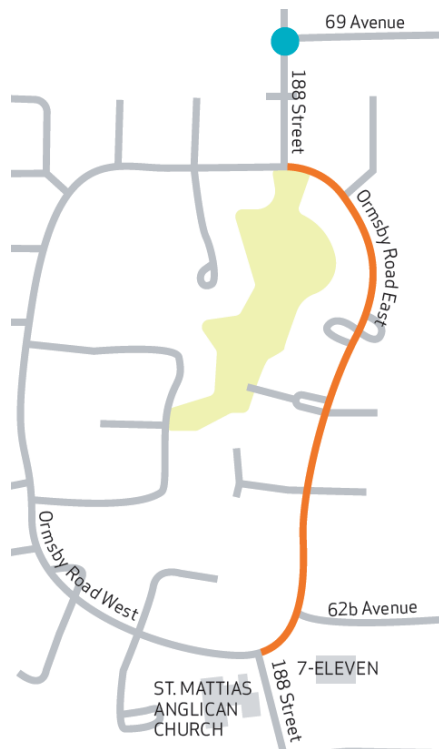


Location	Daily Volume		Reduction
	Before	After	
#1 Ormsby Road E, North of 65 Avenue	2,030	810	60%
#2 Ormsby Road E, North of 62B Avenue	2,010	950	53%

# Ormsby Place Traffic Calming Pilot Project

## Traffic Shortcutting

- Shortcutting was measured along Ormsby Road East before and after the changes at the 69 Avenue – 188 Street intersection



	Percentage Shortcutting		Number of vehicles shortcutting in two hour period	
	Before	After	Before	After
7AM – 9AM	38%	23%	83	27
4PM – 6PM	29%	18%	126	63

# Ormsby Place Traffic Calming Pilot Project

## Vehicle Speeds



### Why is speed important?

If a pedestrian is struck at 30 km/h, an adult has a 95% chance of survival.

At 60 km/h, the chance of survival is 10%.

Location	Speed Limit (km/h)	Average Speed (km/h)	
		Before	After
#1 Ormsby Road E, North of 65 Avenue	50	42	46
#2 Ormsby Road E, North of 62B Avenue	50	44	47





# Ormsby Place Traffic Calming Pilot Project

## Public Involvement Process

- Pre-meetings with the concerned citizens and Community League representatives
- Pre-meeting with Ward Councillor
- Notification Flyer to neighbourhood residents
- Roadside signs prior to traffic calming measures
- Traffic Shortcutting Pilot Project Website
- Neighbourhood Phone Survey
- Drop-in Public Meeting (today's event)



# Ormsby Place Traffic Calming Pilot Project

## What We Heard

- 209 inquiries were received through email and phone calls
- Common Themes Included:
  - Inadequate consultation with area residents
  - Should not restrict movement between neighbourhoods: Lymburn residents are not shortcutters
  - Should not restrict movement between neighbourhoods: Ormsby Place residents are not shortcutters
  - Should not restrict movement between neighbourhoods; instead, we should put speed humps along Ormsby Road East
  - We have now shifted traffic to 184 Street; past an elementary school, the Community League building, and a church
  - Restricting the movement will only succeed if there is adequate enforcement



# Ormsby Place Traffic Calming Pilot Project

## Phone Survey Results

- 113 Ormsby Place residents were surveyed from January 21 to 24, 2016
- The Public Engagement Process
  - Approximately 75% of the respondents were aware of the community traffic management process in Ormsby Place
  - Almost 65% of the respondents felt they had enough information to clearly understand the pilot project
  - 30% of the respondents felt the project included opportunities to provide input into decisions
- The Traffic Management Measures
  - Approximately 35% of respondents were satisfied with the peak hour traffic volumes and traffic safety along Ormsby Road East prior to the traffic management measures
  - Close to 55% of respondents are comfortable with the banning of through movements at the intersection of 69 Avenue and 188 Street
  - Since the banning of through movements at the intersection of 69 Avenue and 188 Street:
    - Approximately 40% of respondents feel the traffic volume decreased
    - Almost 30% of respondents feel the traffic safety improved
  - Since the installation of the Driver Feedback Signs, approximately 35% of respondents feel the traffic safety improved



# Ormsby Place Traffic Calming Pilot Project

## Next Steps

- The Traffic Shortcutting Pilot Project is focused on evaluating the public involvement process along with the traffic calming measures
- Your feedback will be gathered and included in a report to the Transportation Committee on March 23<sup>rd</sup>. For more information, please visit:  
[www.edmonton.ca/trafficshortcuttingpilot](http://www.edmonton.ca/trafficshortcuttingpilot)
- The results of the pilot project will provide input into the development of a City Policy for Traffic Management