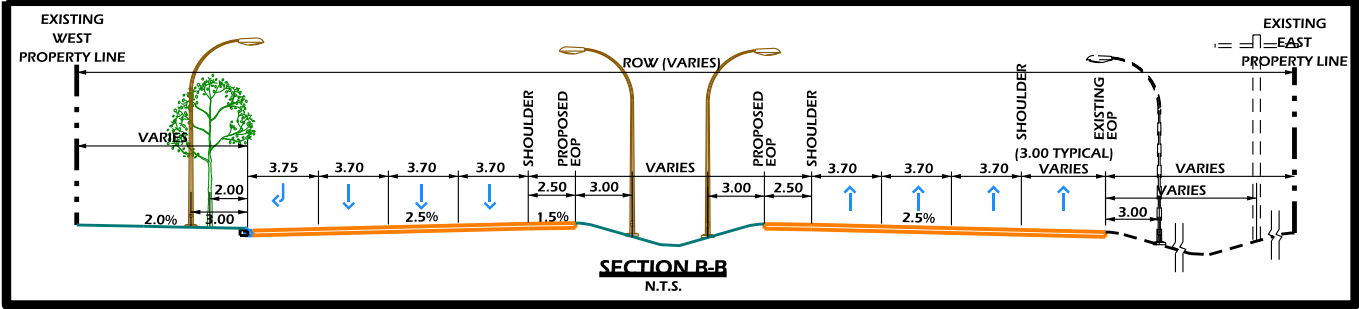


DESIGN SPEED = 80 km/h
POSTED SPEED = 70 km/h

LEGEND

- CURB & GUTTER
- EDGE OF PAVEMENT
- LANE LINE
- SHOULDER / STOP LINE
- GUIDE LINE
- PROPERTY LINE
- TRAFFIC SIGNAL

* NOTE: ALL THE ABOVE ARE PROPOSED ITEMS *

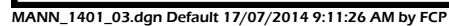


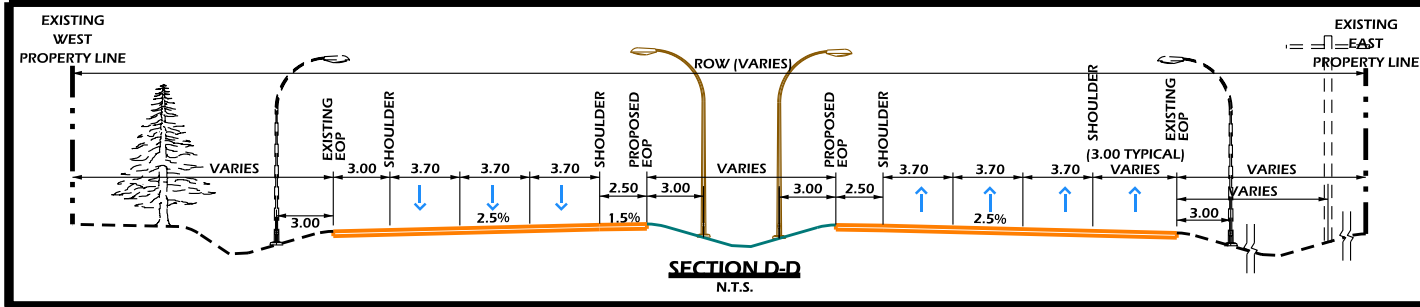
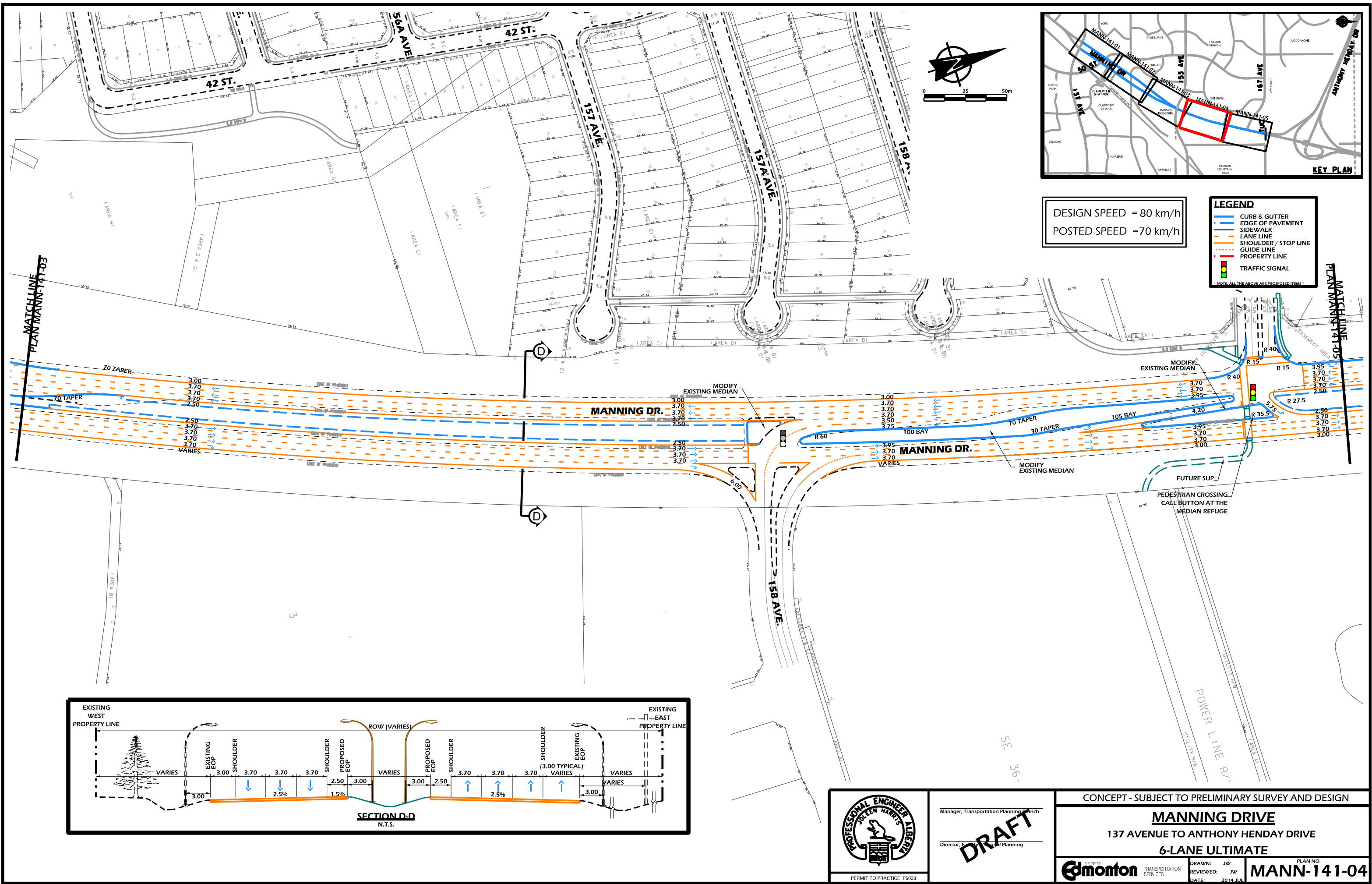
Manager, Transportation Planning Branch
Director, Engineering Planning
DRAFT

CONCEPT - SUBJECT TO PRELIMINARY SURVEY AND DESIGN

MANNING DRIVE
137 AVENUE TO ANTHONY HENDAY DRIVE
6-LANE ULTIMATE

	DRAWN: JW	PLAN NO.
	REVIEWED: JW	MANN-141-02
	DATE: 2014 JUL	





Manager, Transportation Planning Branch
Director, Engineering Planning
DRAFT

CONCEPT - SUBJECT TO PRELIMINARY SURVEY AND DESIGN	
MANNING DRIVE	
137 AVENUE TO ANTHONY HENDAY DRIVE	
6-LANE ULTIMATE	
	DRAWN: JW REVIEWED: JW DATE: 2014 JUL
PLAN NO. MANN-141-04	

