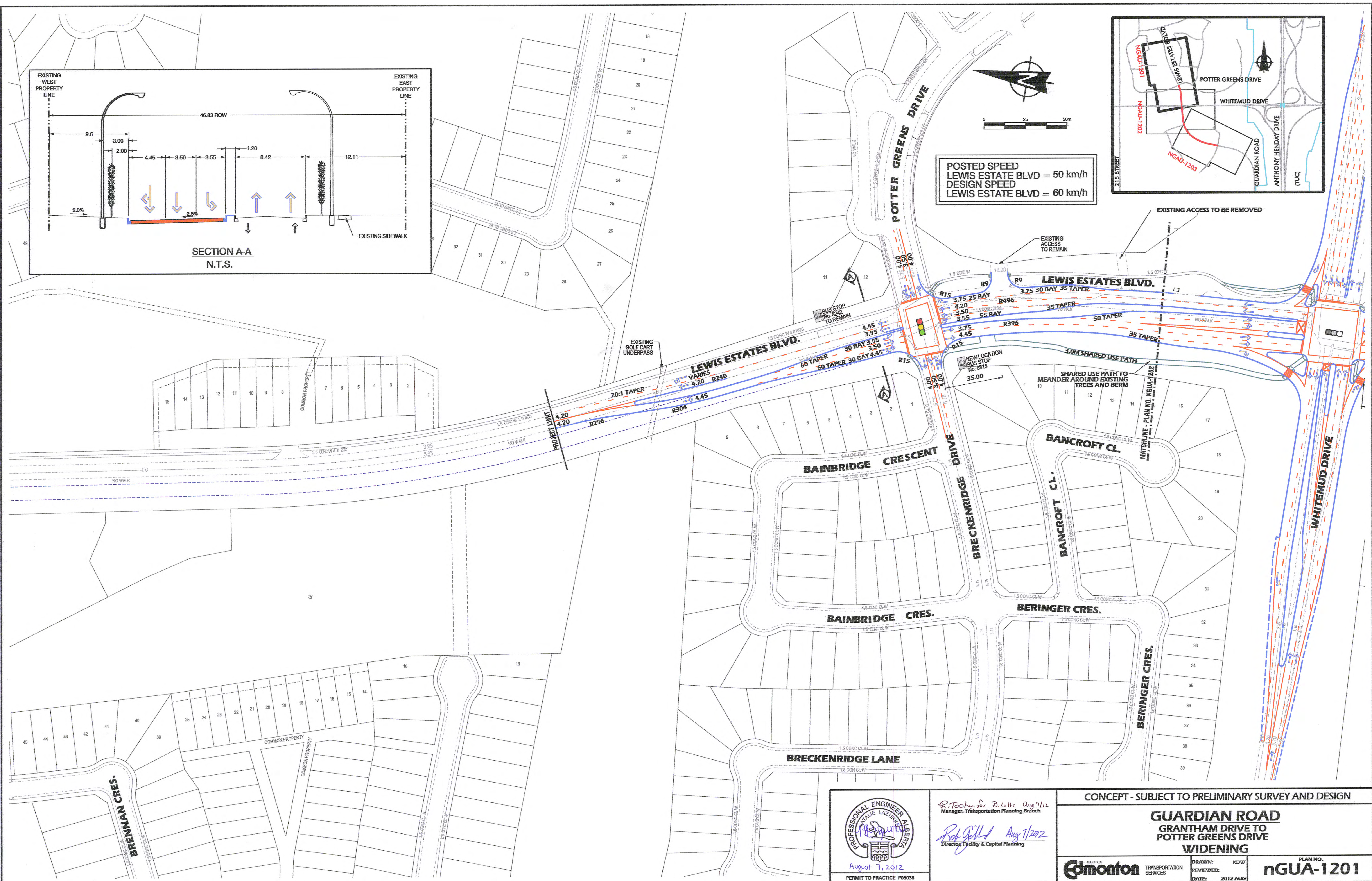
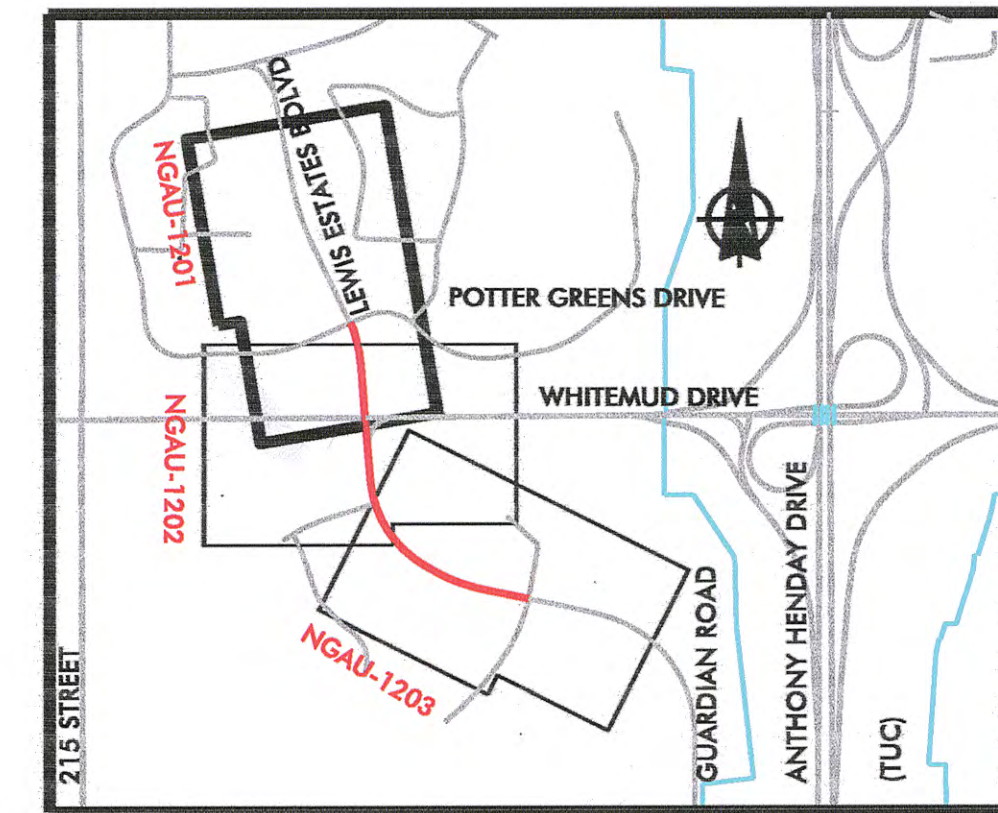


POSTED SPEED
LEWIS ESTATE BLVD = 50 km/h
DESIGN SPEED
LEWIS ESTATE BLVD = 60 km/h



PROFESSIONAL ENGINEER
ALBERTA
LAZARUS
August 7, 2012
PERMIT TO PRACTICE P05038

R. Teoh for B. Lette Aug 7/12
Manager, Transportation Planning Branch
R. Gill Aug 7/2012
Director, Facility & Capital Planning

CONCEPT - SUBJECT TO PRELIMINARY SURVEY AND DESIGN

GUARDIAN ROAD
GRANTHAM DRIVE TO
POTTER GREENS DRIVE
WIDENING

THE CITY OF
Edmonton
TRANSPORTATION
SERVICES

DRAWN: KDW
REVIEWED:
DATE: 2012 AUG

PLAN NO.
nGUA-1201

