

Fact Sheet

LRT and the Saville Sports Centre

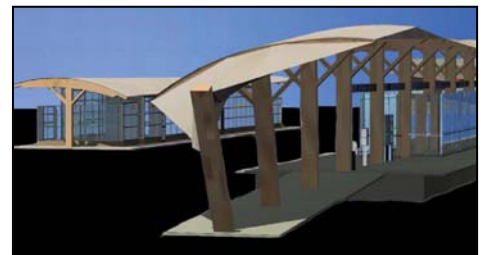
Edmonton's South LRT Extension is under construction, with changes expected for the Saville Sports Centre.

By the end of 2008, construction will be complete on the next section, bringing the LRT from the Health Sciences Station (opposite the University of Alberta Hospital) to the future South Campus Transit Centre. Riders will begin to use the new service in 2009.

The City of Edmonton has worked closely with the University of Alberta and the Government of Alberta to coordinate plans for the LRT with long-range plans for the University of Alberta's new South Campus.

The new South Campus LRT Station

A new 14-bay bus terminal and an LRT station will be built east of Foote Field and the Saville Sports Centre. This station will primarily serve transit transfers connecting from west Edmonton and future students at the University of Alberta's South Campus.



Future South Campus LRT Station and bus terminal

Construction-impacts

Traffic

Road access to the Saville Centre will change permanently once LRT construction begins. Patrons must now access the Saville Centre from 60 Avenue. Access to the Saville Centre parking lot will be maintained throughout construction. See the map for further details.

Pedestrian/cyclists

Pedestrians and cyclists should expect detours. Alternate routes will be available to allow "east-west" access to 113 Street, and to allow pedestrians and cyclists "north-south" routes from Belgravia Road to 60 Avenue.

Noise

Construction noise should be expected, including sounds from backhoes, bulldozers and saws. However, hours of work and sound levels will be limited by the City of Edmonton's noise bylaw.

Questions?

If you have any questions about the LRT project, please contact: 496-4874

If you have any questions about the Saville Centre, please contact: 492-2222

