

Environmental Assessment Process

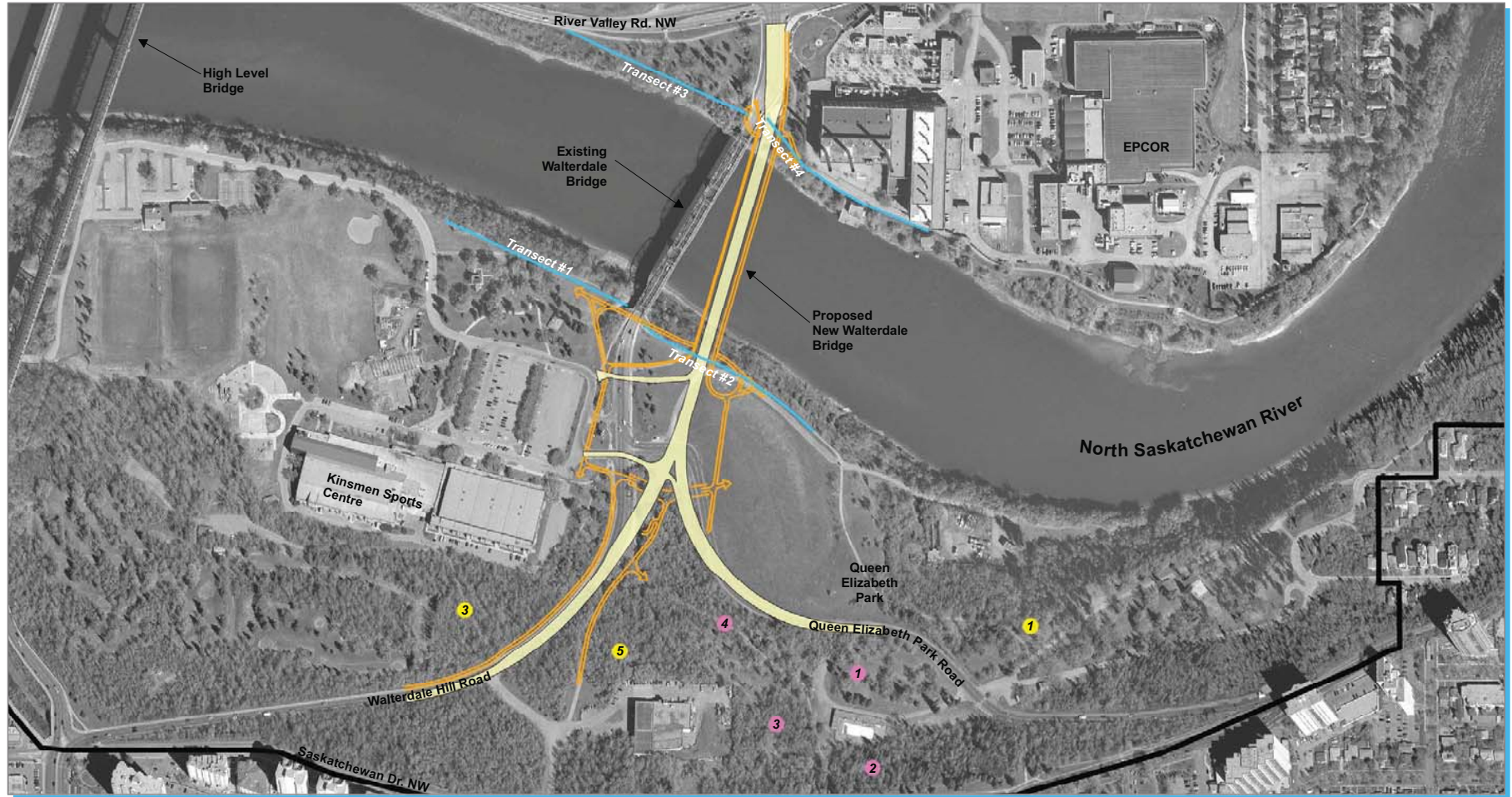
- An Environmental Assessment (EA) document is being prepared pursuant to the federal Canadian Environmental Assessment Act (CEAAAct) and to City of Edmonton's North Saskatchewan River Valley Area Redevelopment Plan (Bylaw 7188).
- The EA will also be submitted to Fisheries and Oceans Canada and Transport Canada for Fisheries Act and Navigable Waters Protection Act approvals, respectively, and to meet CEAAAct requirements.
- The EA will identify ways that the proposed project could affect biophysical and socio-economic resources. The following Valued Ecosystem Components (VECs) are being assessed: geology and geomorphology (including slope stability), soils, hydrology (surface water and groundwater), air quality, vegetation, wildlife, habitat connectivity, fish and aquatic resources, land disposition and zoning, residential land use, recreational land use, traffic flow, utilities, human health, acoustic environment, worker and public safety, visual resources and historical resources.
- The EA will describe existing environmental conditions, assess potential impacts and describe mitigation measures intended to eliminate or reduce impacts to each VEC.
- The target date for completion of the environmental assessment is March 2012.

Investigations completed or underway:

- Vegetation
- Wildlife
- Fish
- Air Quality

The public is invited to identify any environmental concerns and provide environmental information for the proposed project area.

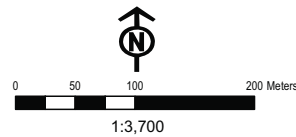
Environmental Assessment



Legend

- Bird Transects (200m)
- Proposed Road Alignment
- Proposed Trails
- Bylaw 7188 Boundary
- Bird Surveys (50m radius plots)
- 2011
- 2006

*# = site number

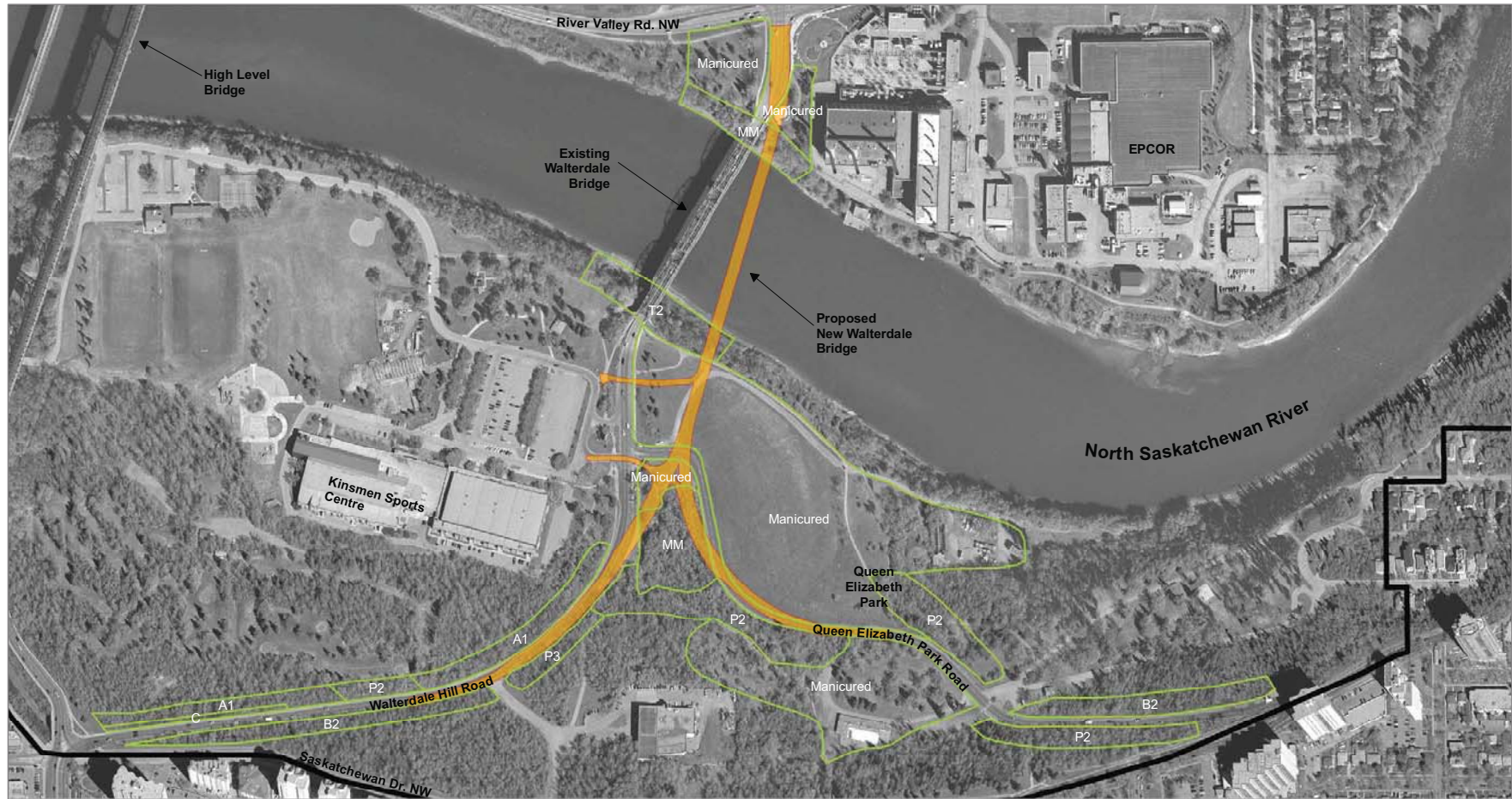


2006 & 2011 Breeding Bird Survey Locations in the New Walterdale Bridge Project Area

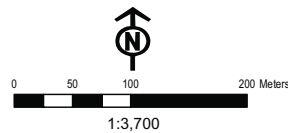
Aerial Photograph Date: May 2008
Date Map Created: 24 November 2011



Environmental Assessment



- Legend**
- Plant Communities**
- A1 (Aspen)
 - B2 (Birch-Aspen-Balsam Poplar)
 - P2 (Balsam Poplar-White Spruce)
 - P3 (Balsam Poplar-Aspen-Birch)
 - T2 (Tall shrub)
 - C (Caragana dominated)
 - MM (Manitoba Maple dominated)
 - Manicured
- Proposed Road Alignment**
- Bylaw 7188 Boundary**



Plant Communities in the New Walterdale Bridge Project Area

Aerial Photograph Date: May 2008
Date Map Created: 24 November 2011



Project Timelines

Schedule

Preliminary Design July 2011 - February 2012

Detailed Design February - November 2012

Construction Spring 2013 – Winter 2015

New Bridge Open to
Traffic Fall 2015

Removal of Existing
Bridge 2015/2016