



Interpretive Belvedere

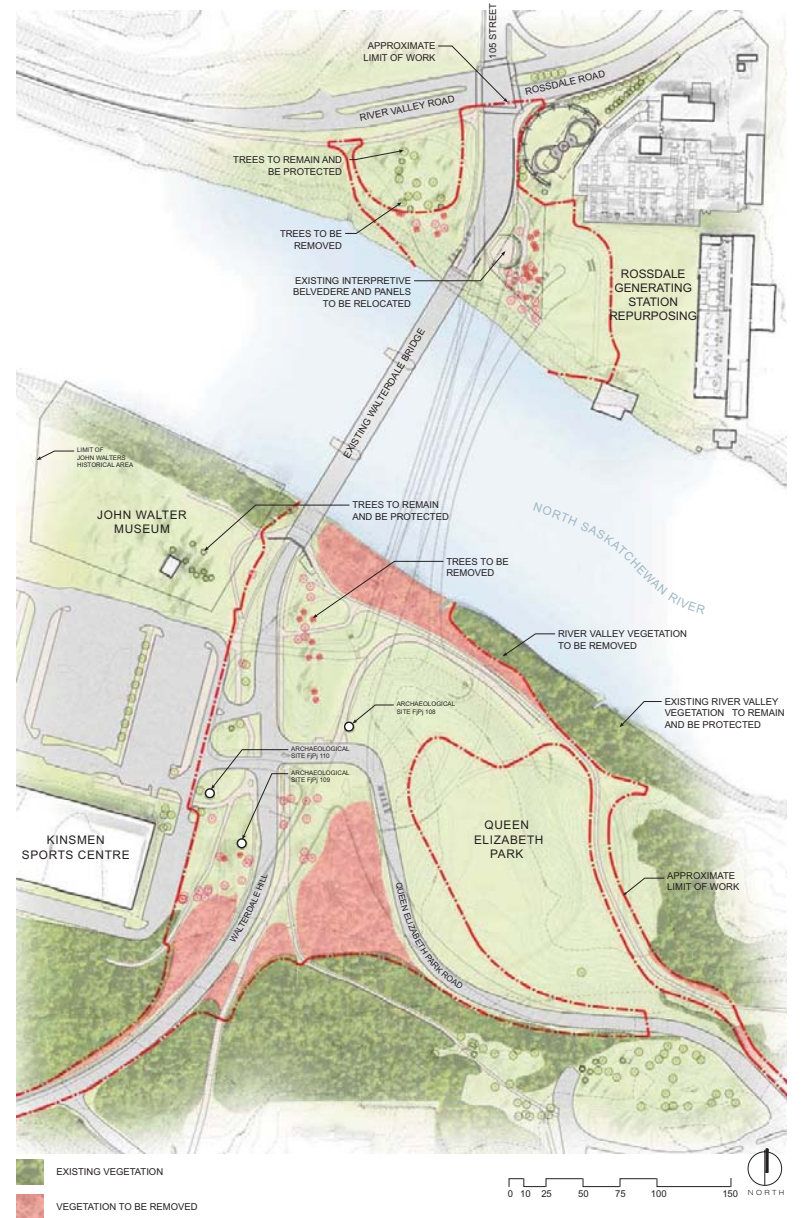


Alternative 1



Alternative 2

Belvedere Relocation Alternatives



Existing Conditions and Removals Plan

Historical and Cultural Considerations

DISCUSSIONS WITH ABORIGINAL ELDERS

- During the concept phase, City of Edmonton Aboriginal Relations and Project Team members met with Elders from aboriginal communities throughout Alberta to discuss the Waltherdale Bridge Replacement.
- Elders expressed agreement that ceremony and spirituality must play a significant role due to the bridge proximity to the Fort Edmonton Cemetery and Traditional Burial Ground.

FORT EDMONTON CEMETERY AND TRADITIONAL BURIAL GROUND COMMEMORATION SITE

- The Project Team recognizes the importance of the Rosedale area as a focus of community identity and collective heritage and the cultural and spiritual significance of the Fort Edmonton Cemetery and Traditional Burial Ground in particular.
- The Project Team recognizes that human remains are present within the historic period cemetery compound within the Fort Edmonton Cemetery and Traditional Burial Ground (as currently defined). Although this area will not be impacted by the Project, the possibility of encountering previously disturbed human remains--although a low risk--is of paramount concern to all stakeholders consulted.
- As a result, the Project will include a protocol that any previously disturbed human remains identified during the course of the Project will be treated with utmost care and respect, and reinterred to the Fort Edmonton Cemetery and Traditional Burial Ground.

Historical and Cultural Considerations

INTERPRETIVE BELVEDERE

- Construction of new bridge will require removal and relocation of the existing interpretive belvedere site at the northeast corner of the existing Walterdale Bridge.
- The Project Team has reviewed possible alternate sites for the relocation of the content and components of the interpretive belvedere.
- Relocation of the interpretive belvedere in the vicinity of the Fort Edmonton Cemetery (if this is selected as the ideal location) will require archaeological monitoring and testing prior to construction in accordance with Alberta Culture and Community Service requirements.

EXISTING WALTERDALE BRIDGE

- It is no longer feasible to rehabilitate the existing bridge, consequently the existing Walterdale Bridge must be removed from service.
- The City of Edmonton is reviewing the possibility of relocating a portion of the bridge for use in another location, as well as the possibility of using components of the existing bridge as part of the bridge replacement and associated work.

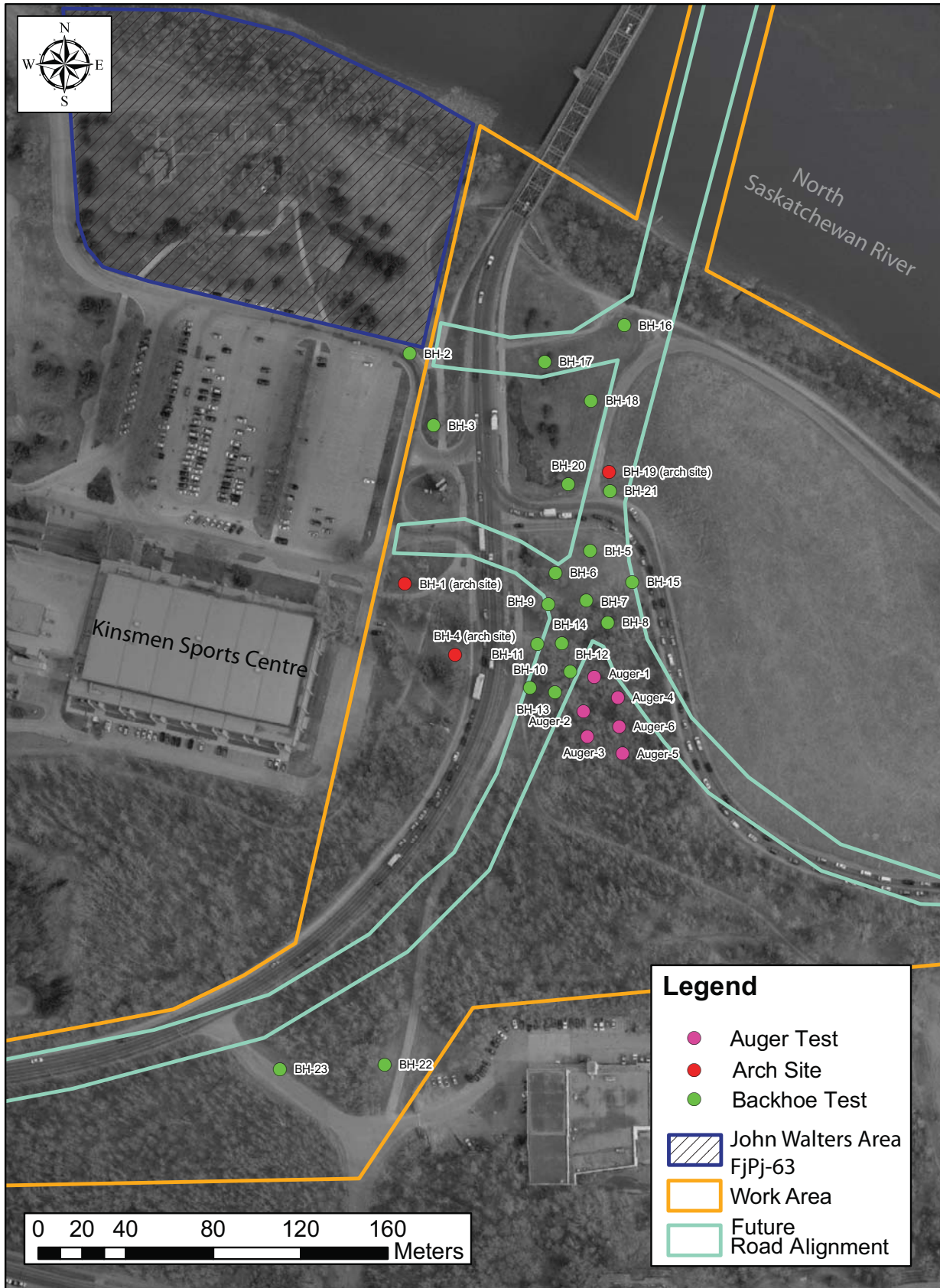
Historical and Cultural Considerations

CULTURAL RESOURCE MANAGEMENT PLAN

- As a component of the Walterdale Bridge Replacement Project, a comprehensive Cultural Resource Management Plan is being implemented which includes:
 - The controlled removal of soil fill and/or archaeological monitoring in lands impacted by the north bridge abutment in order to inspect intact sediments for cultural features.
 - Excavations at FjPj-108 and HRIA work on the south side of the river.
 - Where subsurface testing prior to construction is not possible due to existing roads, buried utility and infrastructure facilities or scheduling concerns related to construction, monitoring of all ground disturbance by an archaeologist.
 - Where potentially fossil bearing bedrock deposits will be impacted, monitoring and/or assessment by a palaeontologist.
 - Development of a concept strategy for the replacement, reconstruction, and/or relocation of the interpretive belvedere.
 - Implementation of a protocol, developed by the City's Aboriginal Relations Office, that any previously disturbed human remains identified during the course of the Walterdale Bridge Replacement Project be treated with utmost care and respect, and reinterred to the Fort Edmonton Cemetery and Traditional Burial Ground.

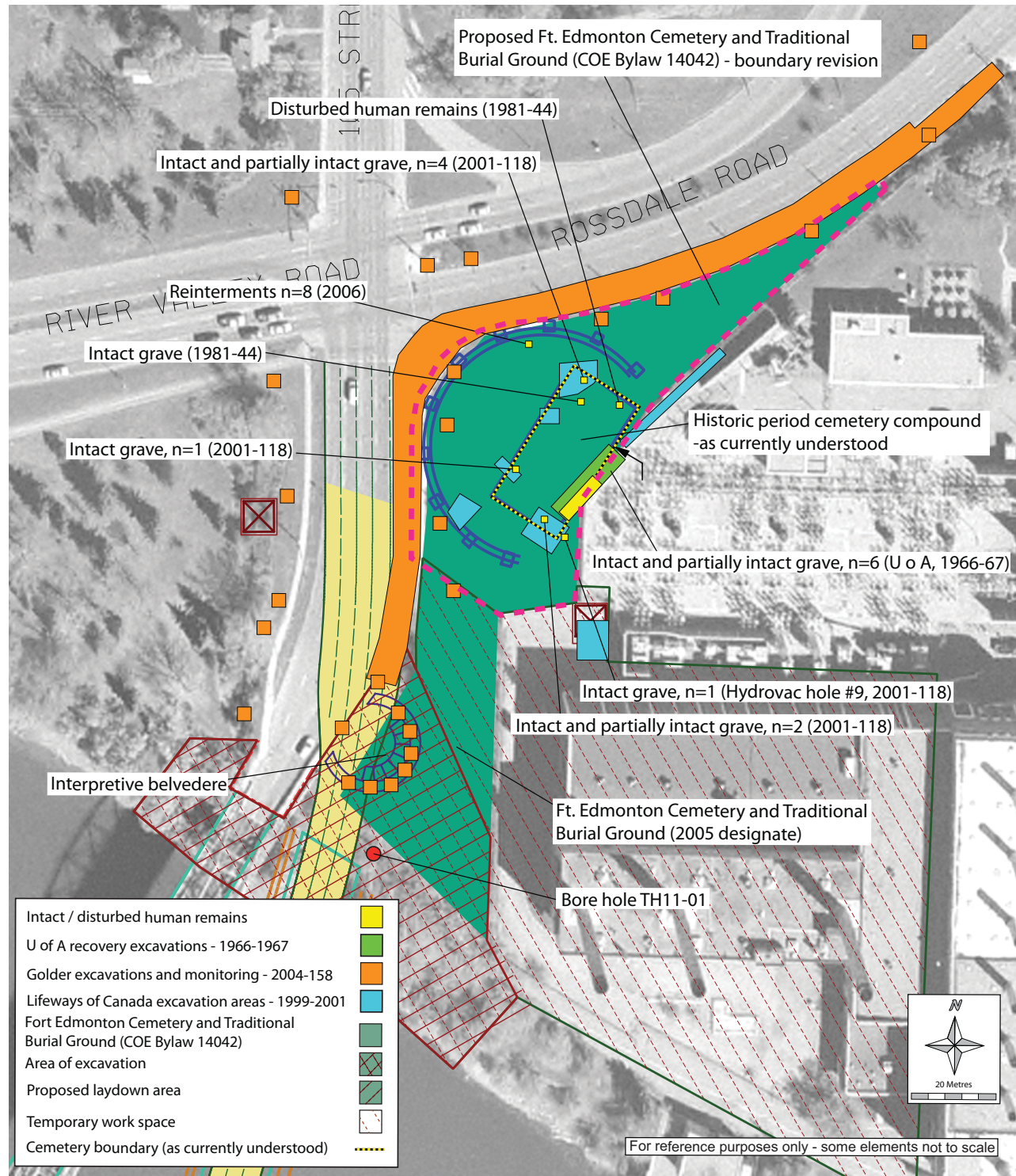
Historical Resources

Test locations for HRIA on the south side of the river

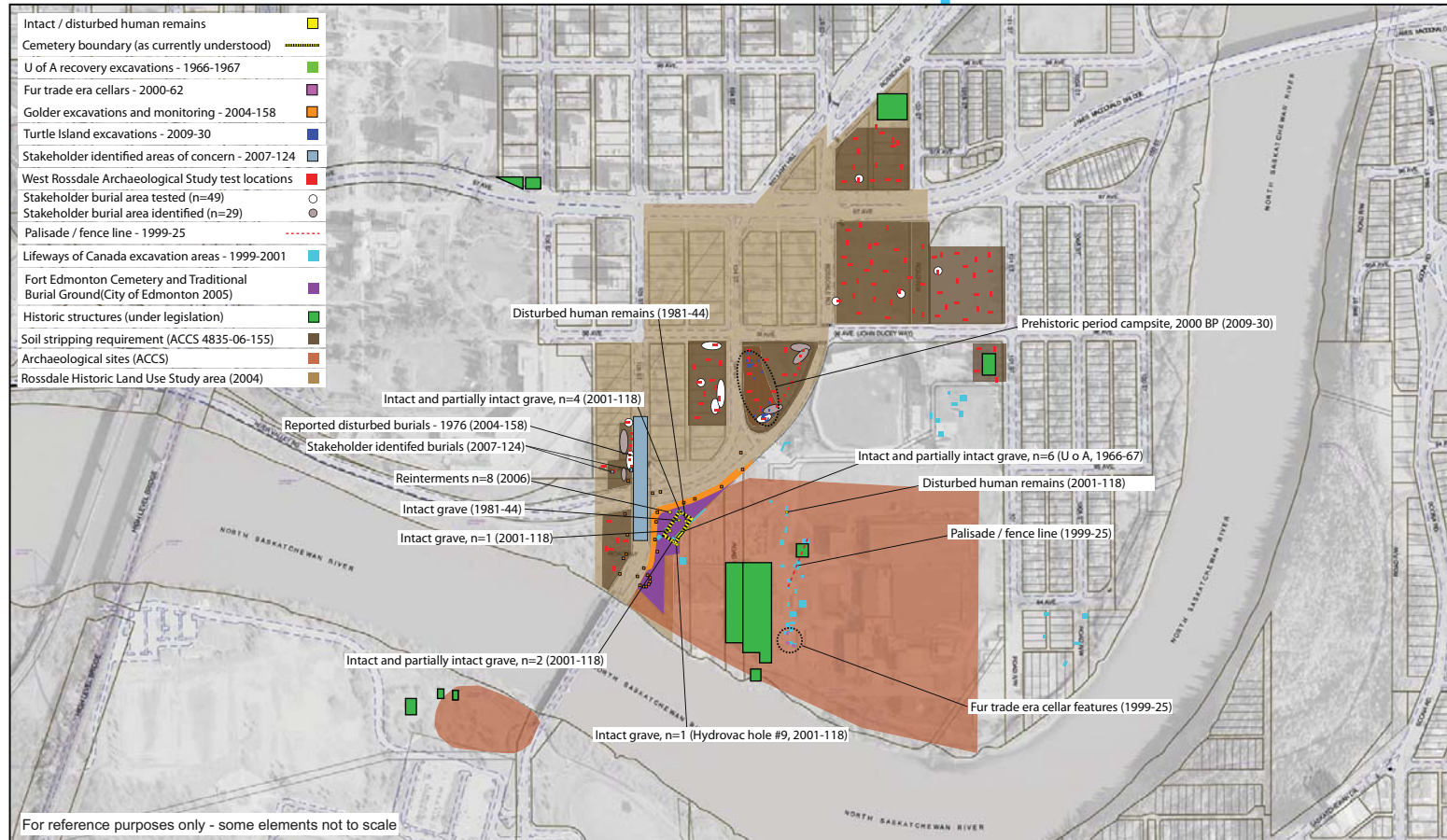


Historical Resources

Known historical information



Historical Resource Impact Summary



TURTLE ISLAND
CULTURAL RESOURCE MANAGEMENT INC.

This document contains sensitive information about Historic Resources that are protected under provisions of the Alberta Historical Resources Act. This information is to be used to assist in planning the proposed project only. It is not to be disseminated, and no copies of this document are to be made without written permission of Historic Resources Management Branch, Alberta Culture and Community Services

THE CITY OF
Edmonton



Designed Devin Hill B.A.	Scale N/A	Date June 25, 2010
Permit Holder N/A	Sec. 29 and 32-52-24, W4M	
Approved Gareth Spicer M.A.	NTS 83/H11, 83/H12	Borden FJP FJP



Aboriginal Consultation

- Alberta Culture and Community Services (ACCS) required notification to Aboriginal communities throughout Alberta as a condition of Historical Resource Act clearance.
- As per ACCS requirements, 21 communities have been notified of this project, 14 have been provided tours of the project area and 8 formal responses have been received by the Project Team outlining questions and concerns.
- To ensure the urban aboriginal population was included, the Papaschase and Michel First Nations and the Métis Nation of Alberta Regions #2 and #4 were also notified.
- The aboriginal consultation process is ongoing and will continue to develop throughout the project.