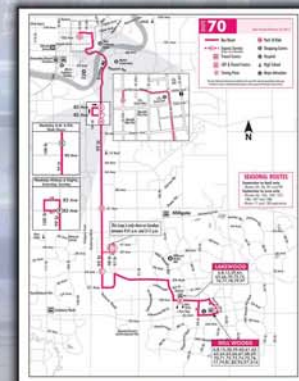
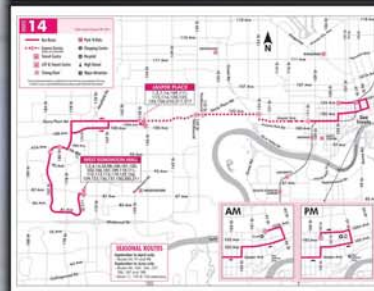
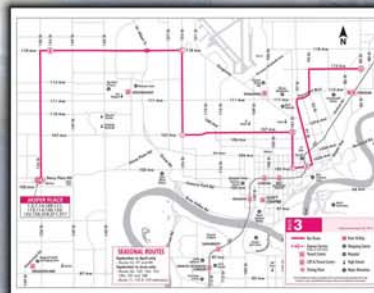
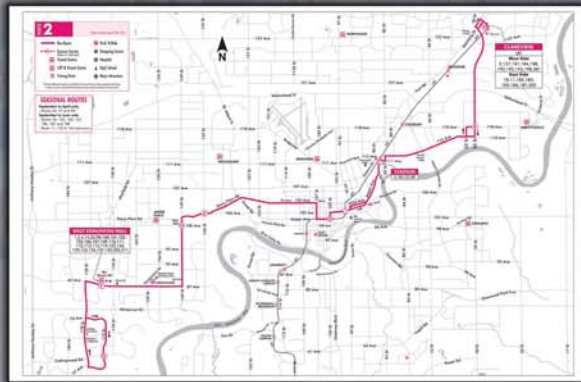


CENTRAL LRT STATION REHABILITATION & JASPER AVENUE (100 ST TO 102 ST) STREETSCAPING TRANSIT ACCOMMODATION (ROUTES 1, 2, 3, 5, 9, 14, 60, 61, 62, 70)

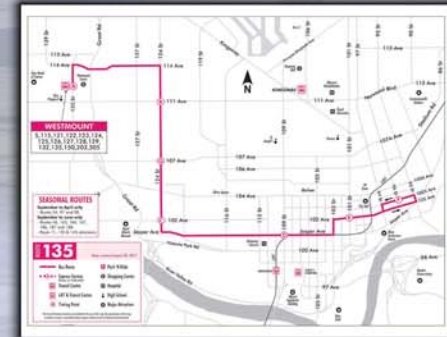
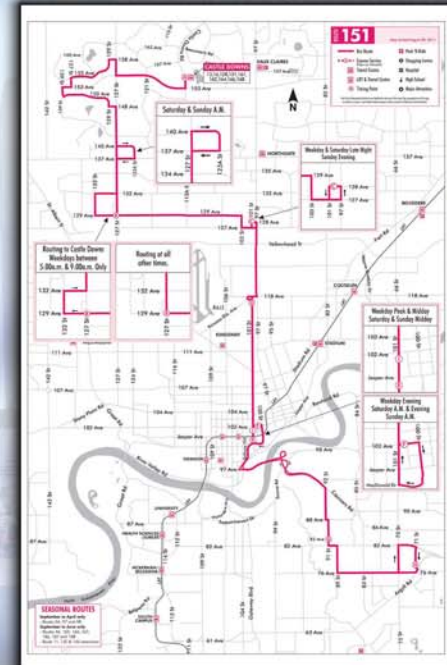
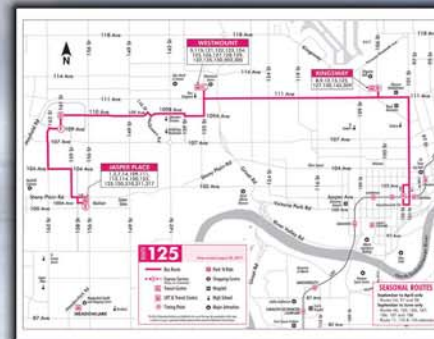
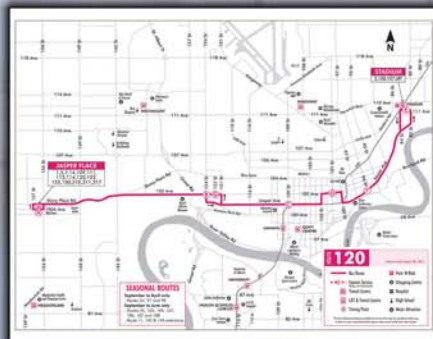
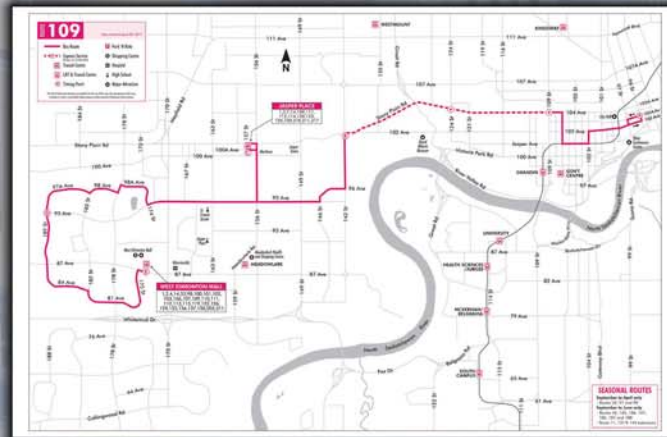
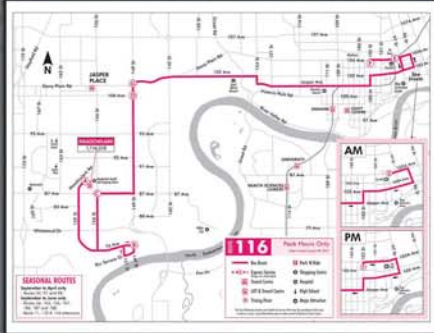
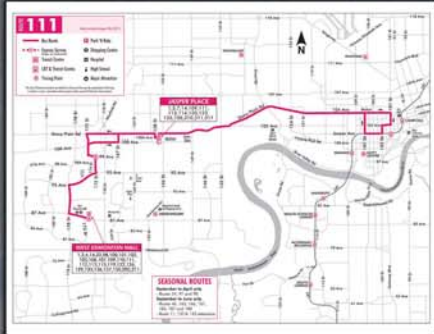
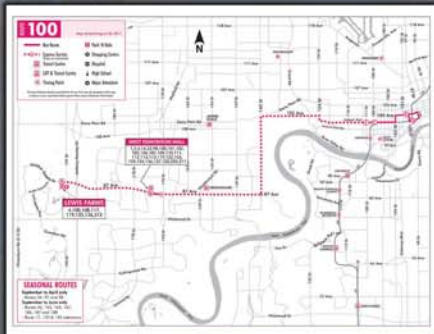
The following ETS bus routes on Jasper Avenue will be affected: 1, 2, 3, 5, 9, 14, 60, 61, 62, 70, 100, 109, 111, 116, 120, 125, 135, 151, & 308.

The revised transit routes will be in effect for the duration of construction for either traffic accommodation options. There will be no bus stops on Jasper Avenue for the duration of construction.



CENTRAL LRT STATION REHABILITATION & JASPER AVENUE (100 ST TO 102 ST) STREETSCAPING

TRANSIT ACCOMMODATION (ROUTES 100, 109, 111, 116, 120, 125, 135, 151, & 308)



The following ETS bus routes on Jasper Avenue will be affected: 1, 2, 3, 5, 9, 14, 60, 61, 62, 70, 100, 109, 111, 116, 120, 125, 135, 151, & 308.

The revised transit routes will be in effect for the duration of construction for either traffic accommodation options. There will be no bus stops on Jasper Avenue for the duration of construction.

City Centre Map

