

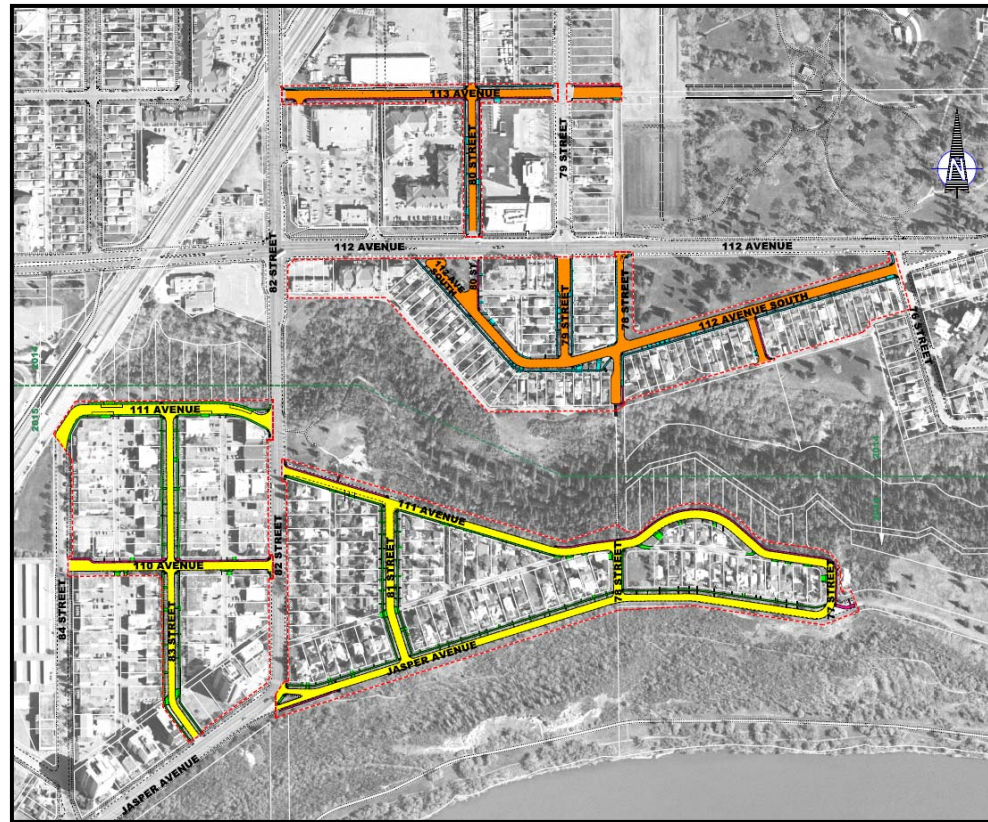
CROMDALE

NEIGHBOURHOOD RENEWAL PROGRAM

Condition & Reconstruction Scope:

Current Condition

- Age: 50+ years (1945-71)
- Pavement: poor condition
- Concrete: fair to very poor condition
- Surface Works: \$8 Million (Conceptual)
- Includes replacement of pavement, sidewalk, curb and gutter, street lighting
- Does NOT include alleys or arterial roadways



Design Considerations

Active Modes

- Addressing accessibility issues by providing new sidewalk/trail connections



Intersections

- Adding curb ramps, improving curb radius, and improving the overall operation



Design Considerations

Road Width

- Where possible, roads are sized to current standards
(Collector = 11.5m; Local = 9.0 m)



Curb Type

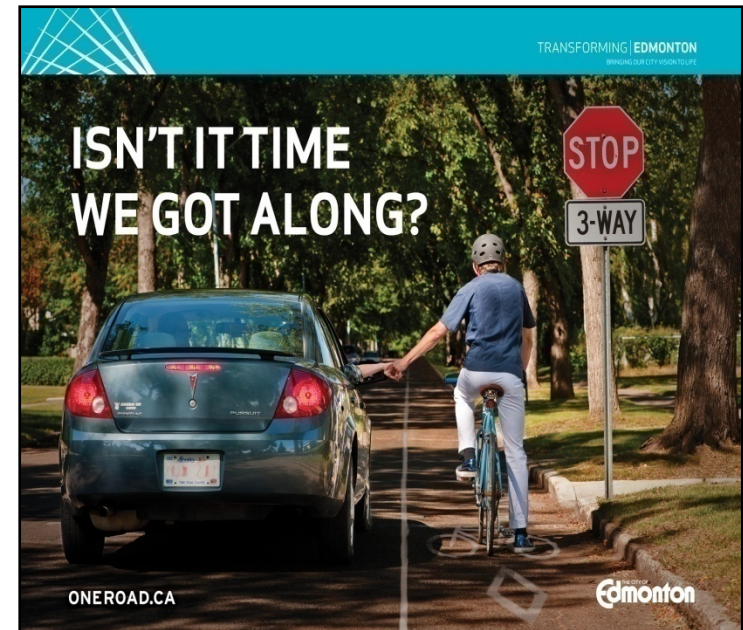
- Roll face curb
- Straight face curb



Active Transportation

Improve infrastructure

- **Sidewalks:** In residential neighbourhoods ensure accessibility to all bus stops, provide a sidewalk on at least one side of the street.
- **Bicycle Routes:** Use the Bicycle Transportation Plan to implement bike lanes, shared-use lanes and shared-use pathways.



Active Transportation

- New sidewalk along south side of 113 Ave between 82 St and 79 St.



Active Transportation

- New sidewalk along north side of 113 Ave from 79 St to Borden Park parking lot.



Active Transportation

New sidewalk along east side of 80 St between 113 Ave and health center access.



Active Transportation

- New sidewalk along east side of 80 St between 112 Ave and 112 Ave S.



Active Transportation

- New sidewalk along north side of 111 Ave between 77 St and alley west of 78 St.



Active Transportation

- New sidewalk along north side of 111 Ave between 81 St and 82 St.



Active Transportation

- New sidewalk along north side of 110 Ave between 84 St and 82 St.



Active Transportation

- New sidewalk along south side of Jasper Ave between 82 St and trail access to the east.



Active Transportation

- Converting unused east end of Jasper Ave to green space.
- Constructing trail connection into Kinnaird Park.



Roadway Improvements

- Upgrade 78 St between 112 Ave and 112 Ave S
 - Relocate power poles
 - Open roadway to two-way traffic



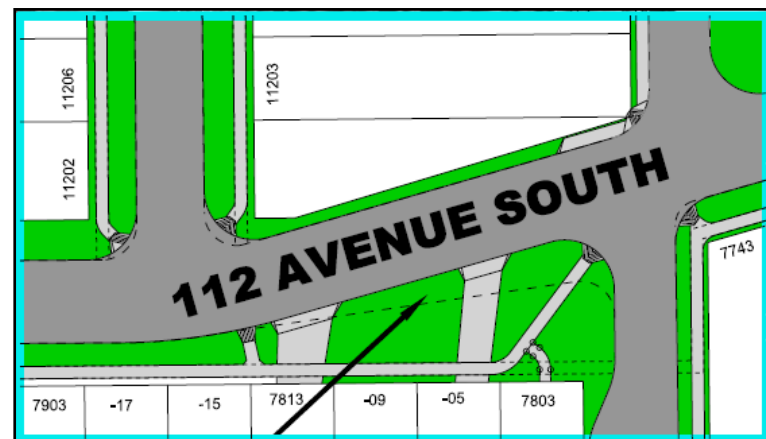
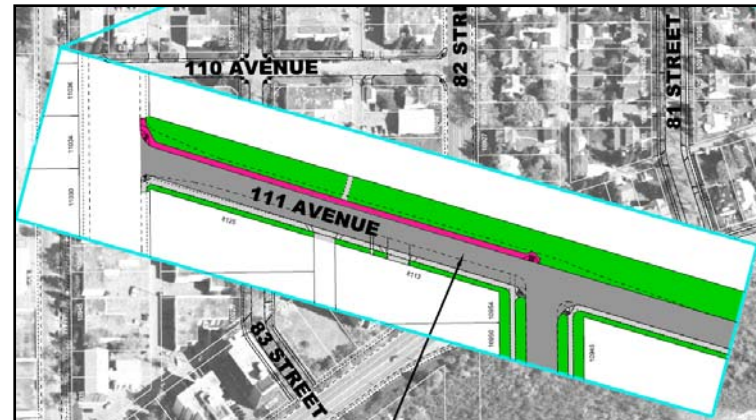
Roadway Improvements

- Upgrade 78 St and 77 St south of 112 Ave S.
 - Convert gravel roadways to asphalt surface with sidewalk and curb and gutter.



Roadway Improvements

- Realign 111 Ave from 81 St to 82 St
 - Shift to the south to align with roadway east of 81 St
 - Improved roadway operation
- Realign 112 Ave S from 79 St to 78 St
 - Shift to the north to align with roadway east of 78 St
 - Improved roadway operation



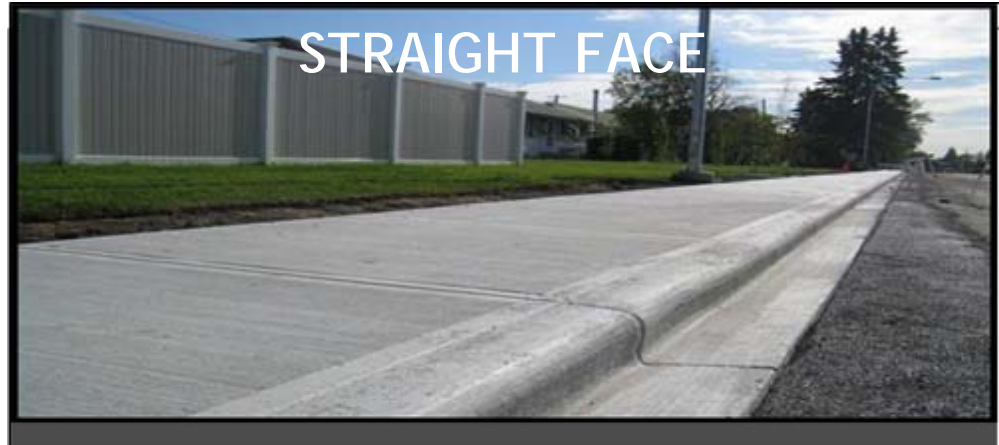
Curb Design

- Straight Face Curb
 - Collector roadways
 - Bus routes
 - School areas
 - Park areas
- Roll Face Curb
 - Local roadways





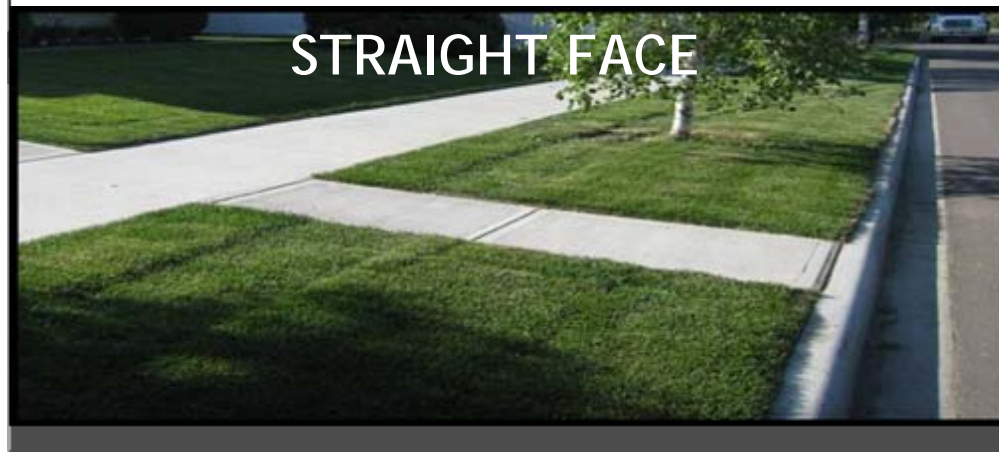
ROLL FACE



STRAIGHT FACE



ROLL FACE



STRAIGHT FACE

Street Light Design Standards

Neighbourhood streetlight system

- Upgraded to energy efficient LED lighting, the new City standard for street lights.



Construction Staging

- Construction will be staged over two years (2014-15).
- Ultimate staging is dependant on weather conditions, coordination with other utilities, and unforeseen design and construction issues.
- To create minimal disturbance for students, construction activities around the schools will be scheduled during the summer months.

