

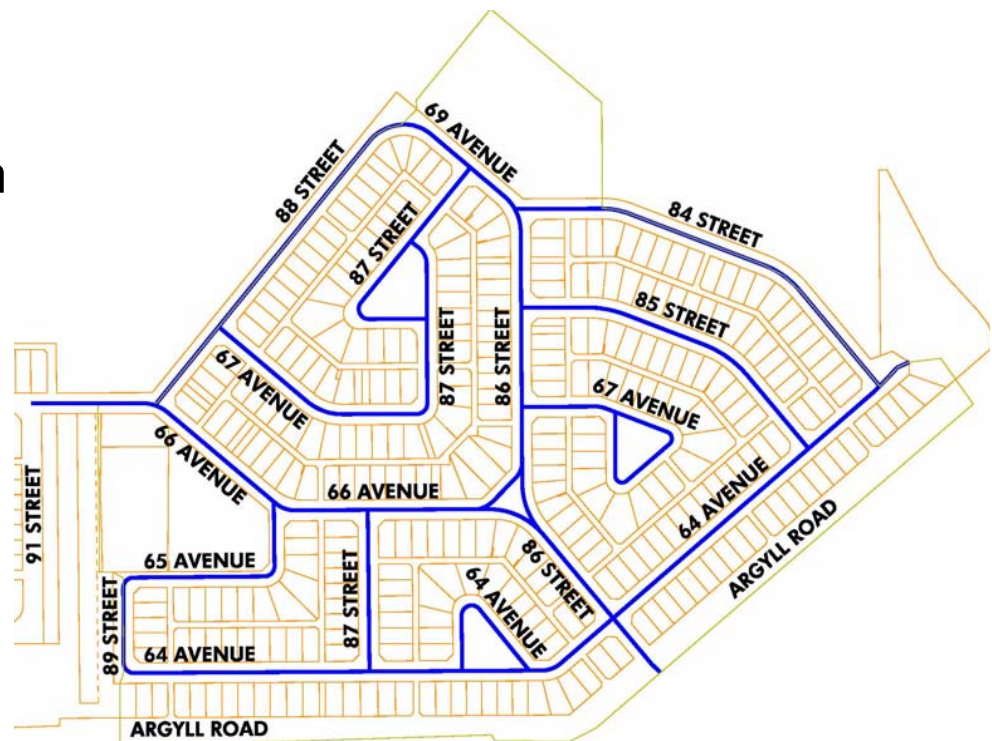
ARGYLL

NEIGHBOURHOOD RENEWAL PROGRAM



Condition & Reconstruction Scope

- Current Condition
- Age: +50 Years
- Pavement: Poor/fair condition
- Concrete: Poor condition
- Surface Works - \$8.5 million (Conceptual)
- Includes replacement of pavement, sidewalk, curb and gutter, street lighting
- Does NOT include alleys or arterial roadways



Design Considerations

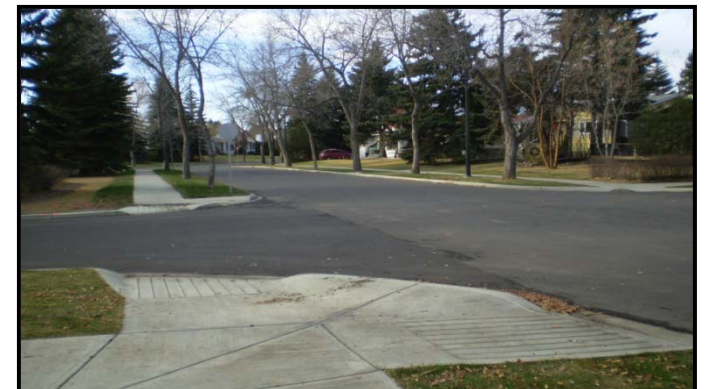
Active Modes

- Addressing accessibility issues by providing new sidewalk/trail connections



Intersections

- Adding curb ramps, improving curb radius, and improving the overall operation



Design Considerations

Road Width

- Where possible, roads are sized to current standards

Collector = 11.5m

Local = 9 m



Curb Type

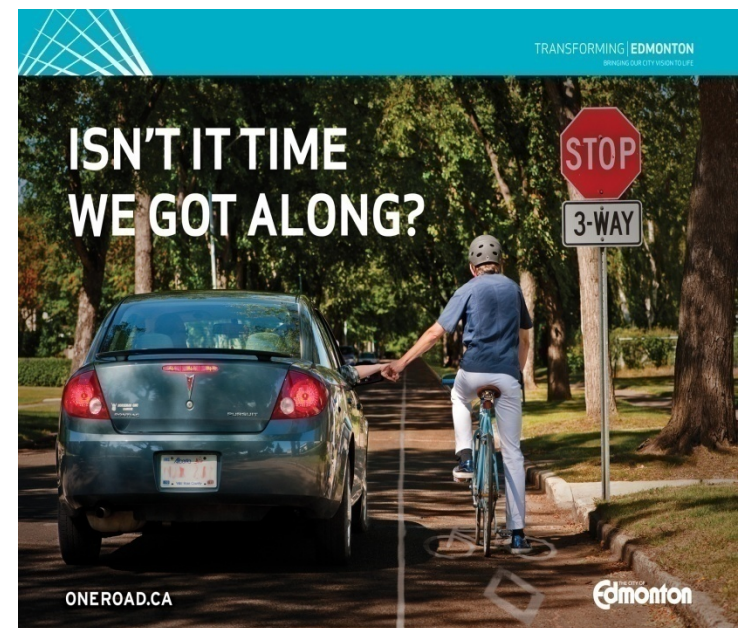
- Roll face curb
- Straight face curb



Active Transportation

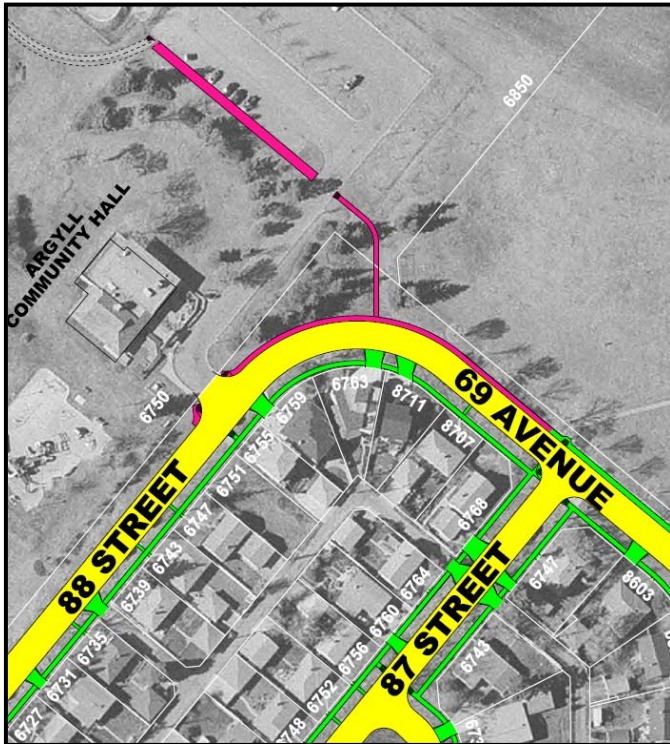
Improve infrastructure

- **Sidewalks:** In residential neighbourhoods, ensure accessibility to all bus stops and provide a sidewalk on at least one side of the street.
- **Bicycle routes:** Use the Bicycle Transportation Plan to implement bike lanes, shared-use lanes and shared-use pathways.



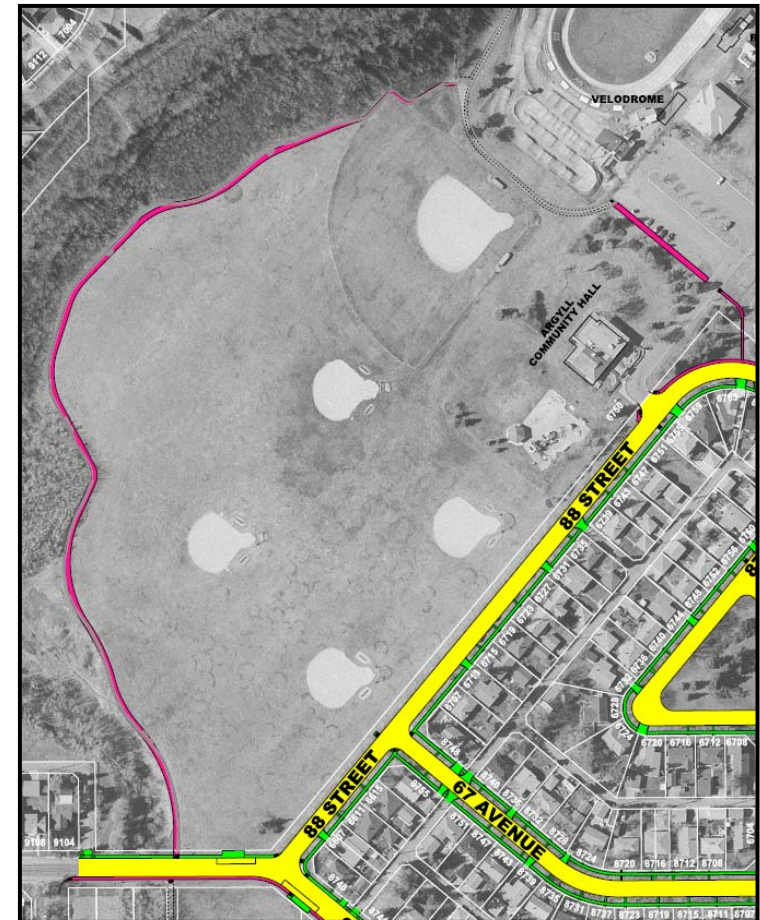
Active Transportation

New sidewalk along 69 Avenue from 87 Street to 88 Street



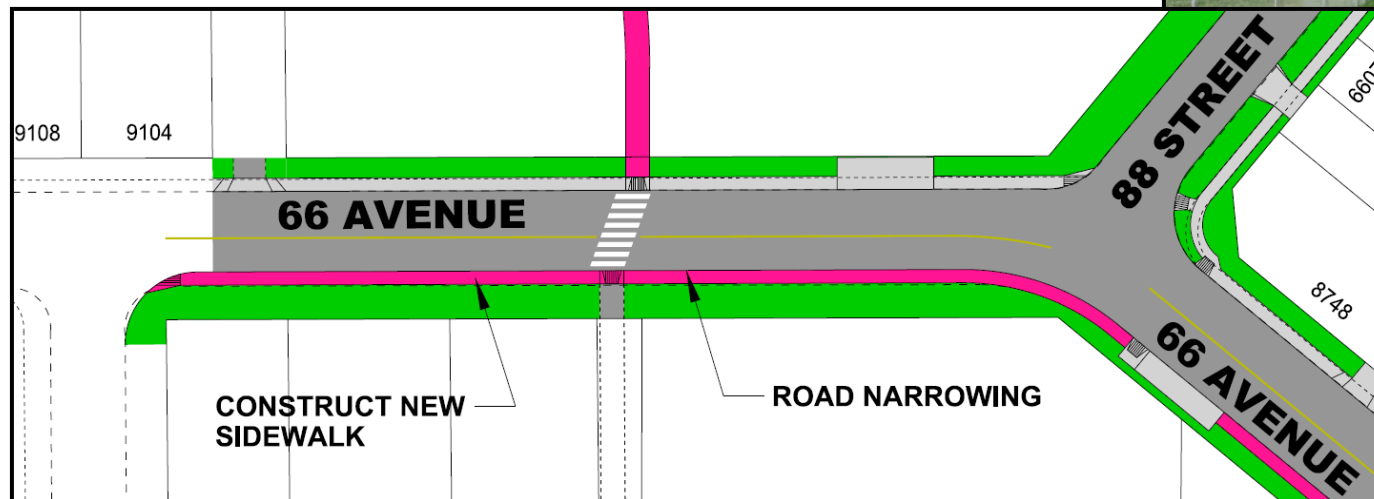
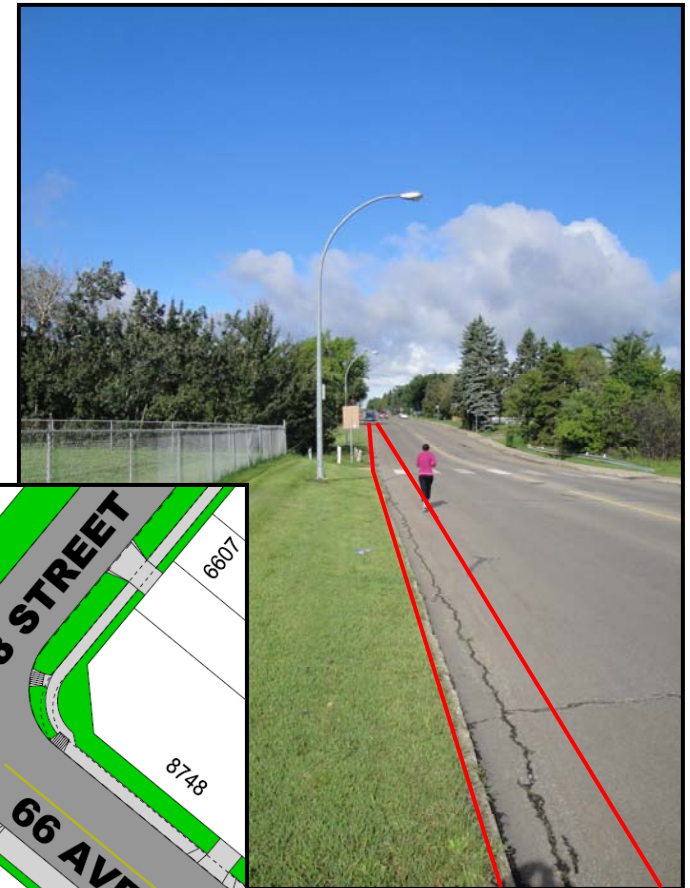
Active Transportation

- New 3 m asphalt shared-use path
 - Southwest side of the Velodrom parking lot
- New 3 m asphalt shared-use path
 - Along the top of the Mill Creek Ravine bank



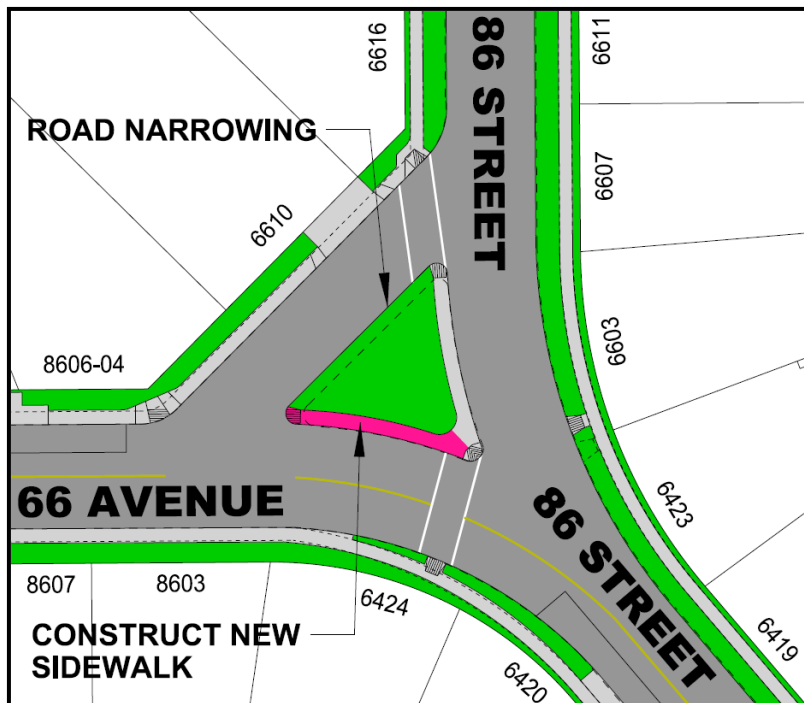
Active Transportation

- 66 Avenue between 88 Street & 91 Street
 - Reduce the road by 1.5m
 - Construct monolithic sidewalk on south side of 66 Avenue
 - Reduces pedestrian crossing distance



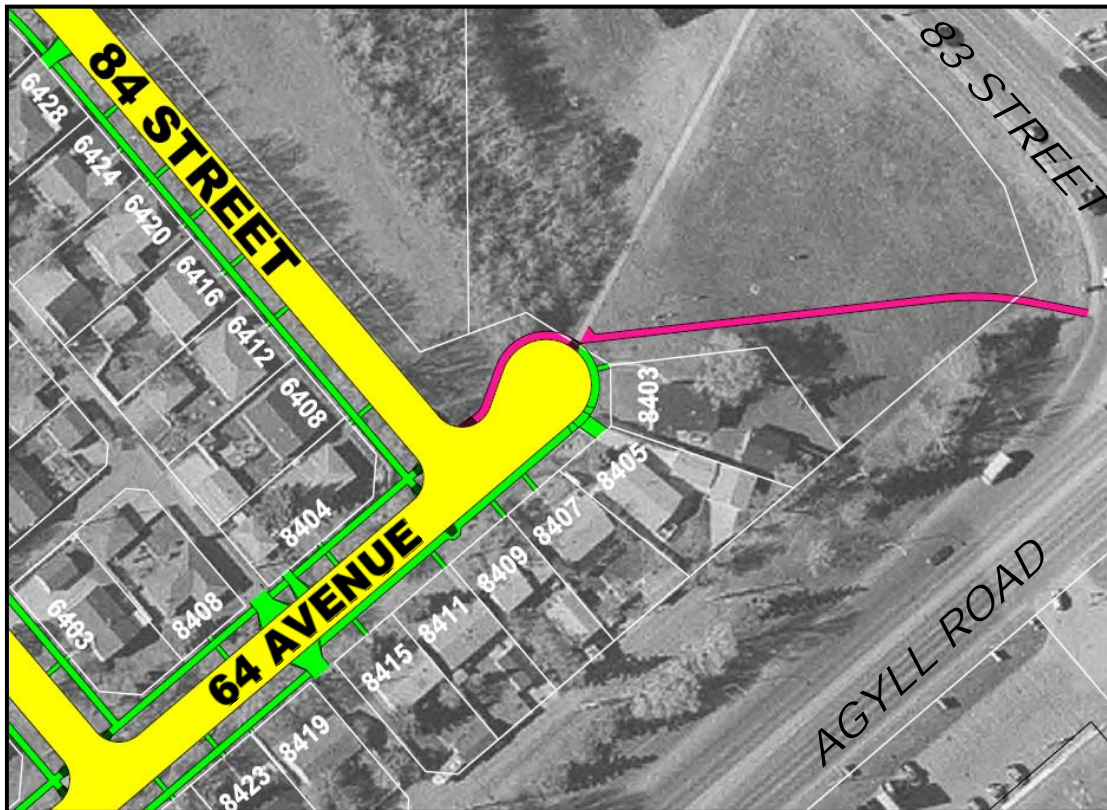
Active Transportation

- New sidewalk along the south side of the median at the intersection of 86 Street and 66 Avenue
- The northwest road of the intersection to be narrowed



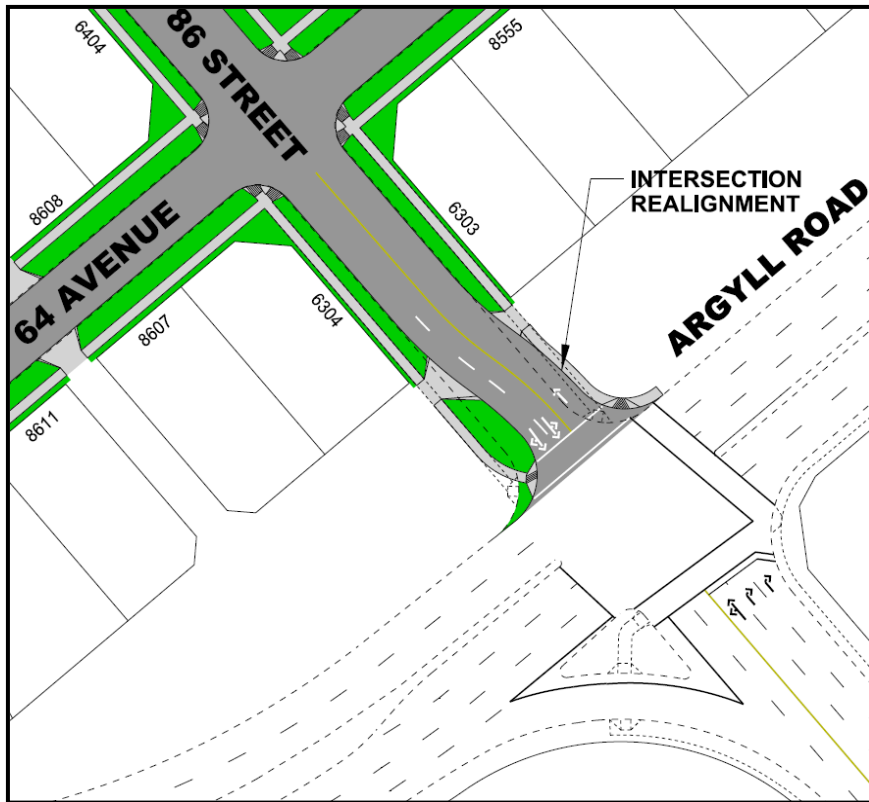
Active Transportation

- New 1.5 m concrete shared-use path
- Intersection of Argyll Road and 83 Street



Roadway Enhancements

Realign the intersection of Argyll Road and 86 Street



Curb Design

- Straight face curb
 - Collector roadways
 - Bus routes
 - School areas
 - Park areas
- Roll faced curbs
 - Local roadways



TRANSFORMING | EDMONTON

BRINGING OUR CITY VISION TO LIFE

ROLL FACE



STRAIGHT FACE



ROLL FACE



STRAIGHT FACE



Street Light Design Standards

Neighbourhood streetlight system

- Upgraded to energy efficient LED lighting, the new City standard for streetlights.



- Construction will be staged over two years (2013-14)
- Ultimate staging is dependant on weather conditions, coordination with other utilities, and unforeseen design and construction issues

