

LEGEND

- Proposed Right of Way
- Proposed Face of Curb
- Proposed Pavement Markings
- Railway
- Gas Pipeline
- 4x9 Bus Stop Pad
- Railroad Crossing Signals
- Guide Arrows Only
- Access Closure

DESIGN SPEED = 70 km/h
POSTED SPEED = 60 km/h

Note: Road dimensions for the City of Edmonton are to the Face of Curb

McElhanney
Consulting Services Ltd.

Edmonton TRANSPORTATION SERVICES

STRATHCONA
COUNTY

CONCEPT - SUBJECT TO PRELIMINARY SURVEY AND DESIGN

17th Street

Arterial Widening
Whitemud Dr to Knightsbridge Rd

20m 0 40m
Hor. 2m 0 4m
Ver.

DRAWN: TD
REVIEWED:
DATE: 2013 04 09

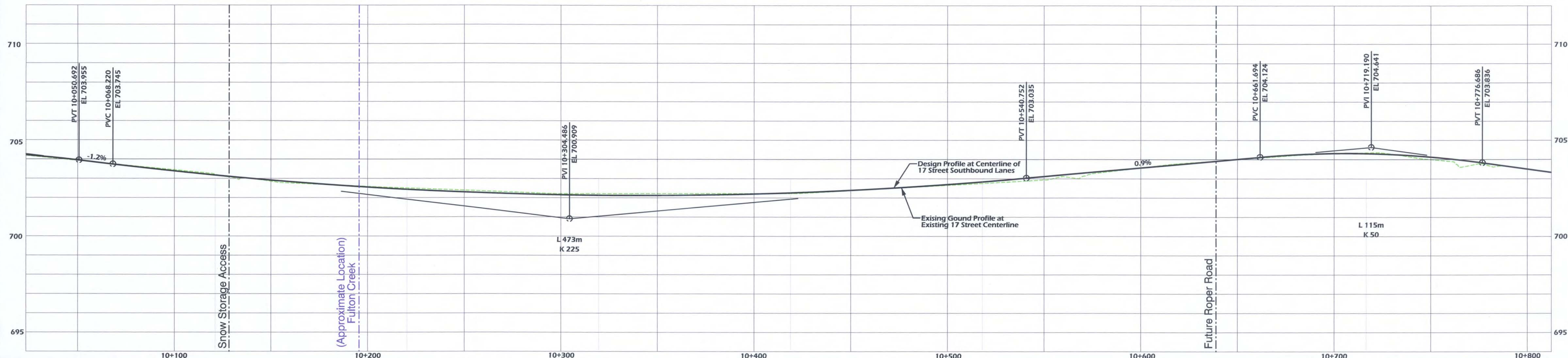
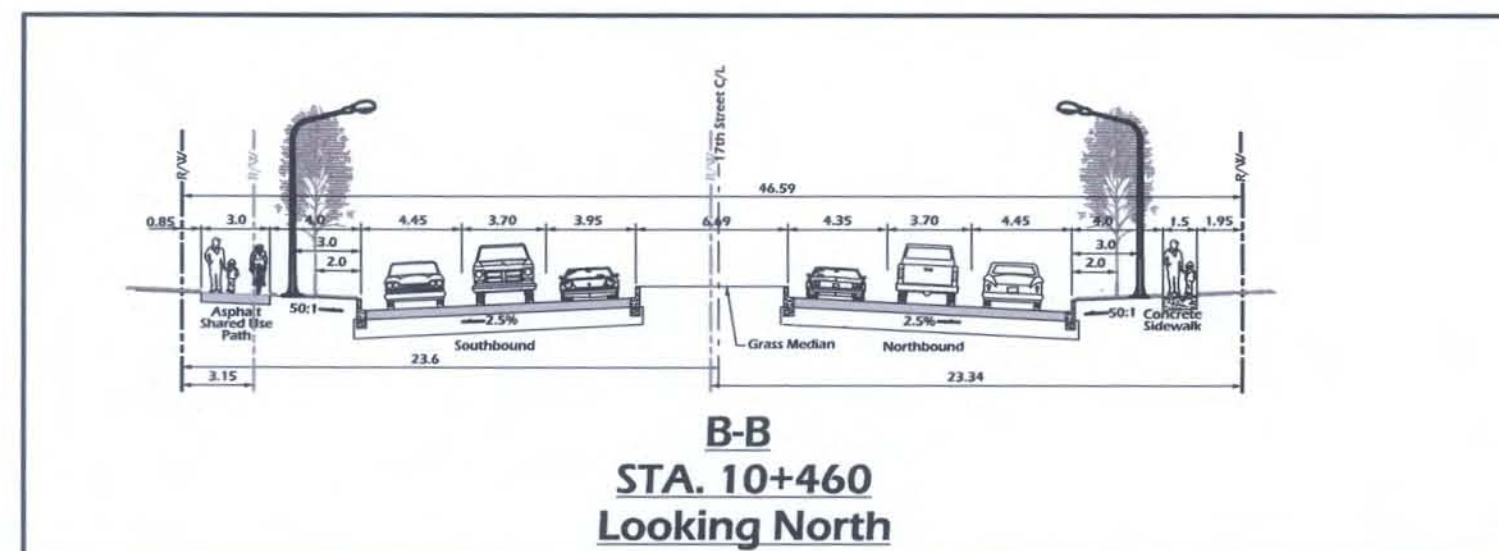
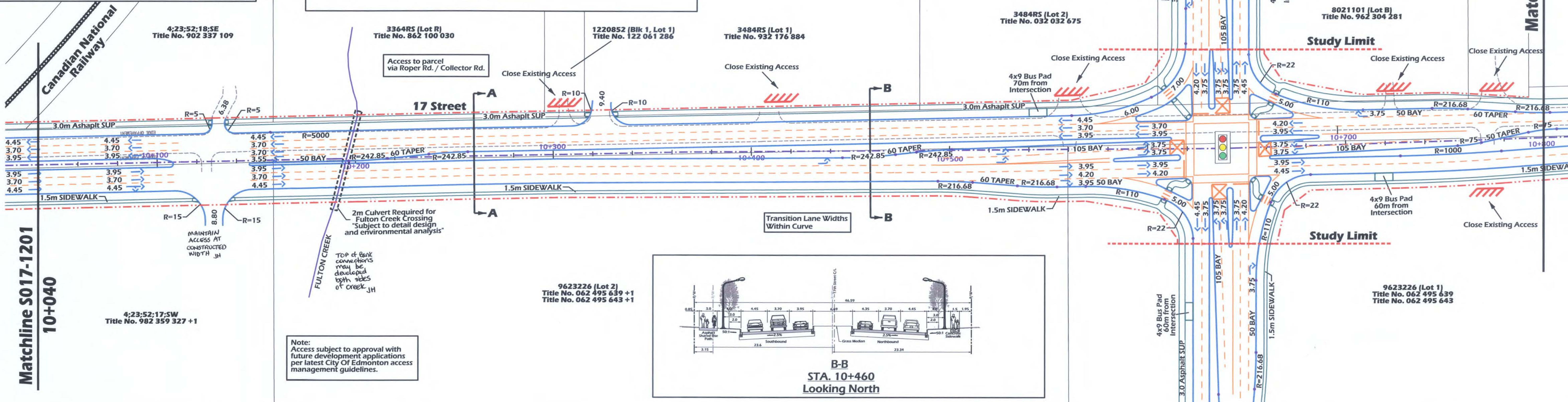
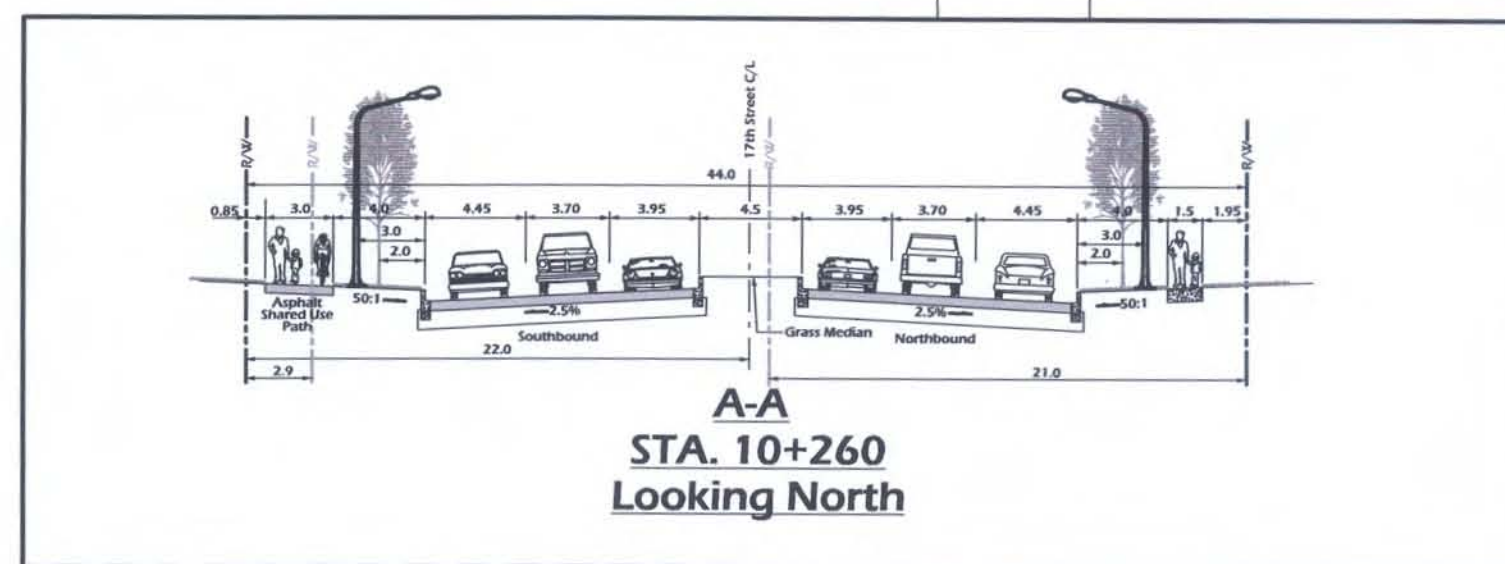
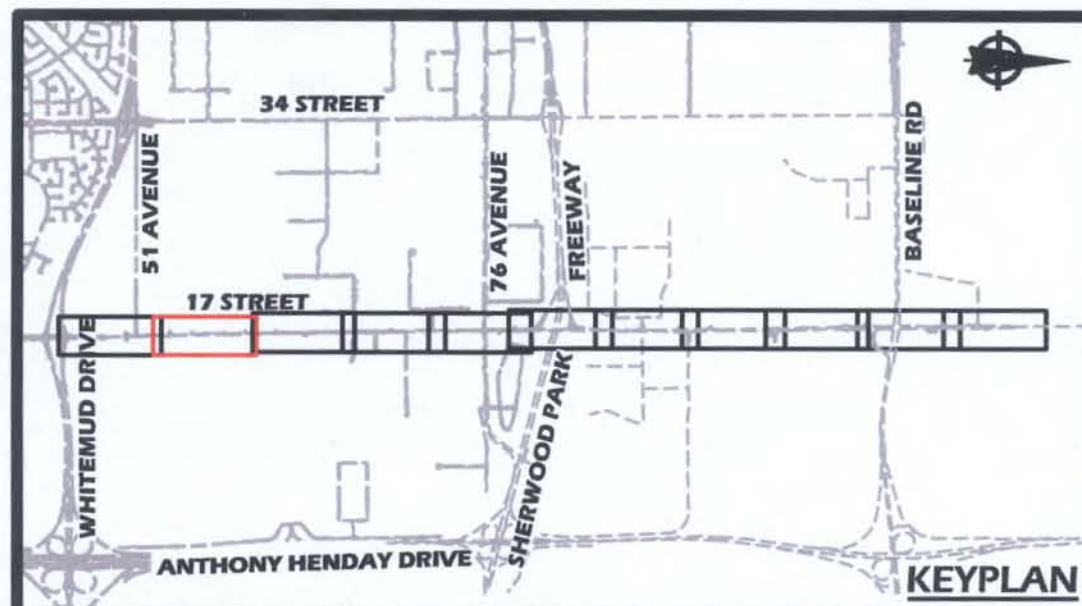
PERMIT TO PRACTICE P6383

5/24/2013
Manager, Transportation Planning Branch

5/15/2013
Director, Facility & Capital Planning

5/22/2013
Director, Development Planning & Engineering

PLAN NO. **S017-1201**



LEGEND

- Proposed Right of Way
- Proposed Face of Curb
- Proposed Pavement Markings
- Railway
- Gas Pipeline
- 4x9 Bus Stop Pad
- Railroad Crossing Signals
- Guide Arrows Only
- Access Closure

DESIGN SPEED = 70 km/h
POSTED SPEED = 60 km/h

Note:
Road dimensions for the City of
Edmonton are to the Face of Curb

McElhanney
Consulting Services Ltd.

THE CITY OF
Edmonton TRANSPORTATION
SERVICES
STRATHCONA
COUNTY

PROFESSIONAL ENGINEER
ALBERTA
P. ENG.
DATE: April 19, 2013
PERMIT TO PRACTICE P6383

Manager, Transportation Planning Branch
Director, Facility & Capital Planning
Director, Development Planning & Engineering

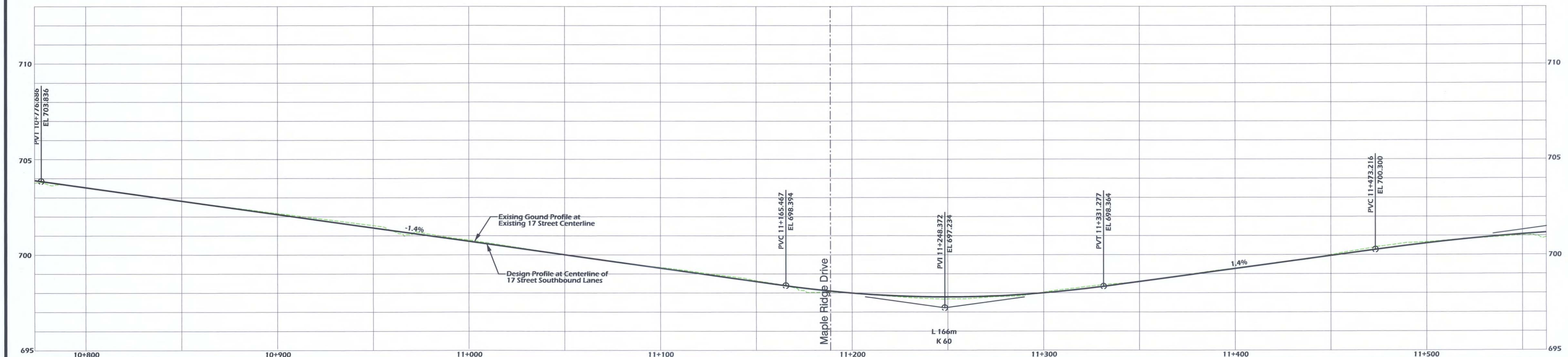
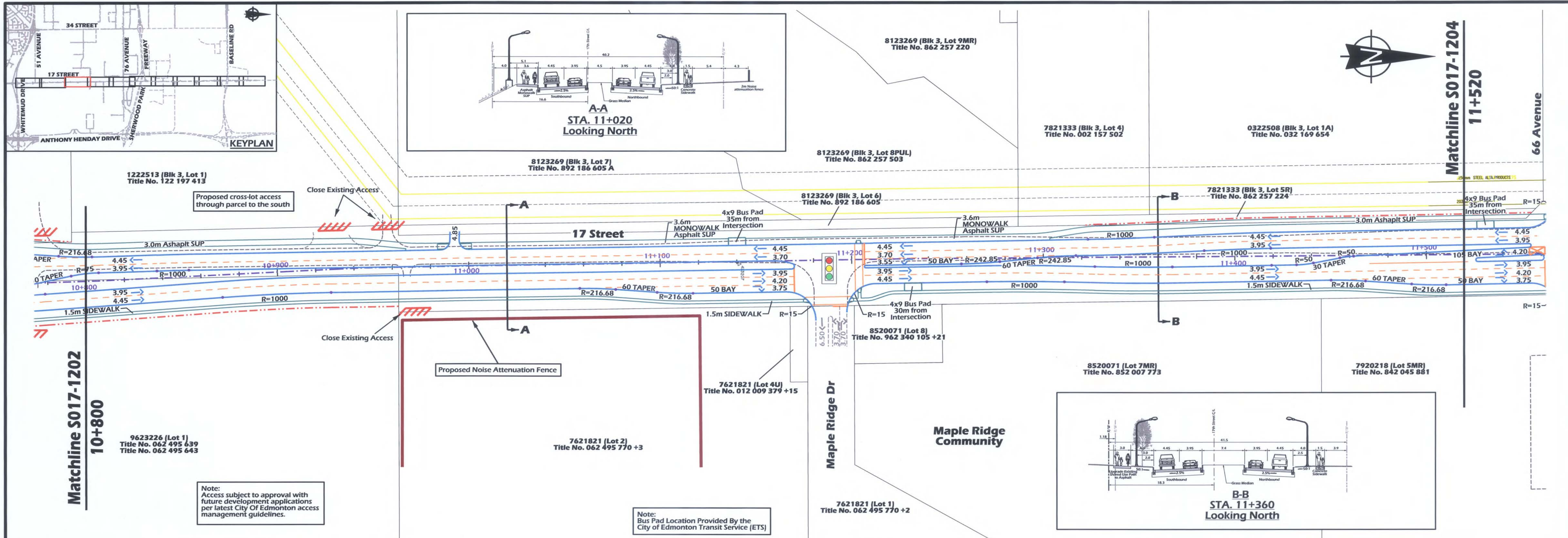
CONCEPT - SUBJECT TO PRELIMINARY SURVEY AND DESIGN

17th Street
Arterial Widening
Whitemud Dr to Knightsbridge Rd

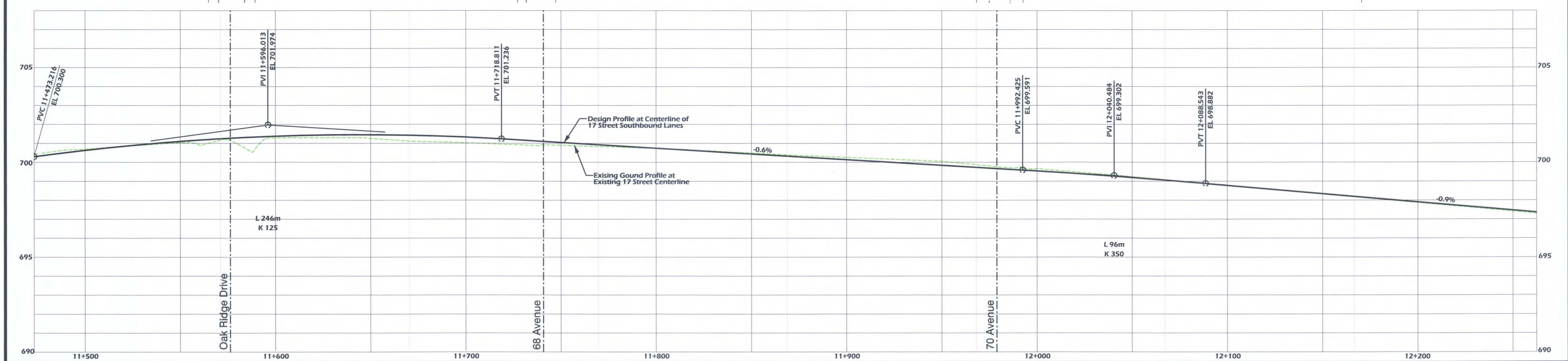
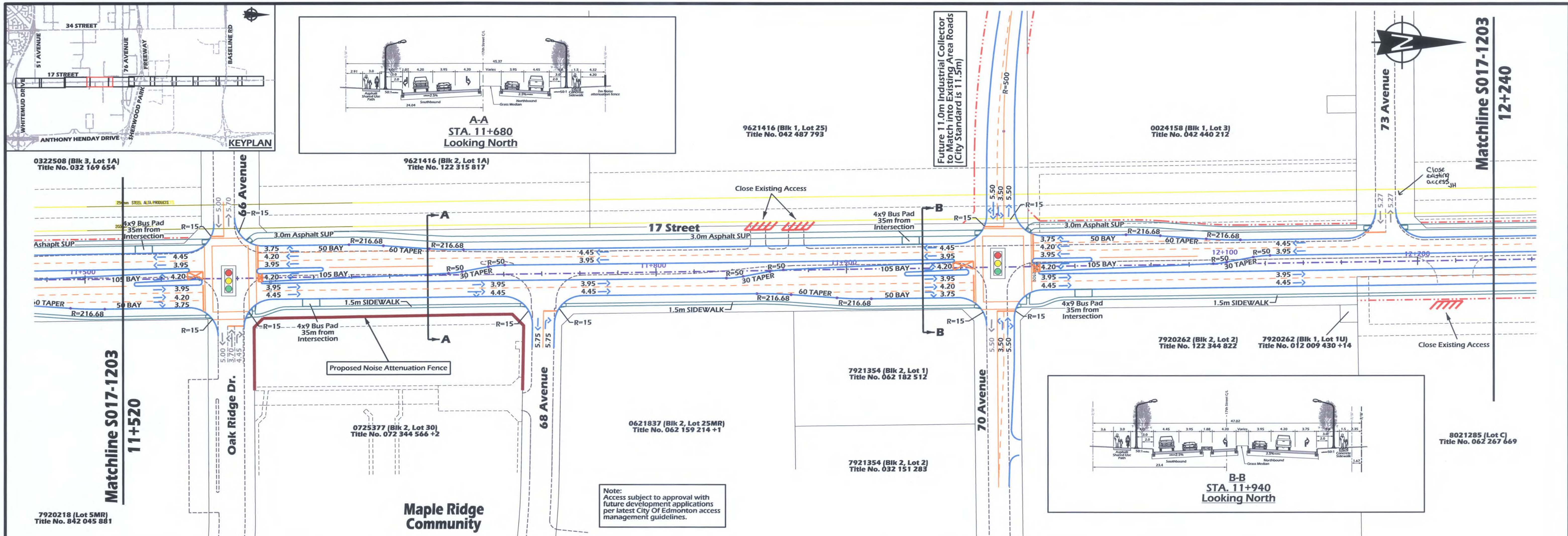
20m 0 40m
Hor. 2m 0 4m
Ver.

DRAWN: TD
REVIEWED:
DATE: 2013 04 09

PLAN NO.
S017-1202



LEGEND <ul style="list-style-type: none"> Proposed Right of Way Proposed Face of Curb Proposed Pavement Markings Railway Gas Pipeline 4x9 Bus Stop Pad Railroad Crossing Signals Guide Arrows Only Access Closure 		DESIGN SPEED = 70 km/h POSTED SPEED = 60 km/h	McElhanney Consulting Services Ltd.	Edmonton TRANSPORTATION SERVICES	STRATHCONA COUNTY	PROFESSIONAL ENGINEER ALBERTA P. ENG. DATE: April 9, 2013 PERMIT TO PRACTICE P6383	CONCEPT - SUBJECT TO PRELIMINARY SURVEY AND DESIGN 17th Street Arterial Widening Whitemud Dr to Knightsbridge Rd	S017-1203 PLAN NO.
Scale: 20m 0 40m Hor. 2m 0 4m Ver.		Drawn: TD Reviewed: 2013 04 09 Date:		5/24/2013 Manager, Transportation Planning Branch 5/22/2013 Director, Development Planning & Engineering				



LEGEND

- Proposed Right of Way
- Proposed Face of Curb
- Proposed Pavement Markings
- Railway
- Gas Pipeline
- 4x9 Bus Stop Pad
- Railroad Crossing Signals
- Guide Arrows Only
- Access Closure

McElhanney
Consulting Services Ltd.

Edmonton
TRANSPORTATION SERVICES

STRATHCONA COUNTY

CONCEPT - SUBJECT TO PRELIMINARY SURVEY AND DESIGN

17th Street
Arterial Widening
Whitemud Dr to Knightsbridge Rd

S017-1204

DESIGN SPEED = 70 km/h
POSTED SPEED = 60 km/h

Note:
Road dimensions for the City of Edmonton are to the Face of Curb

Professional Engineer
Ryan T. Betner
P. Eng. No. 11111
Permit to Practice P6383

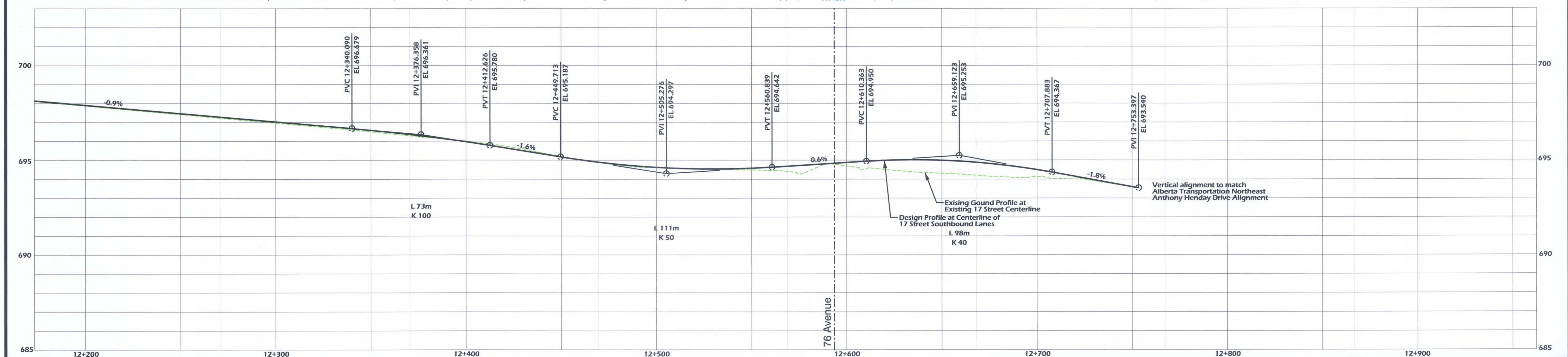
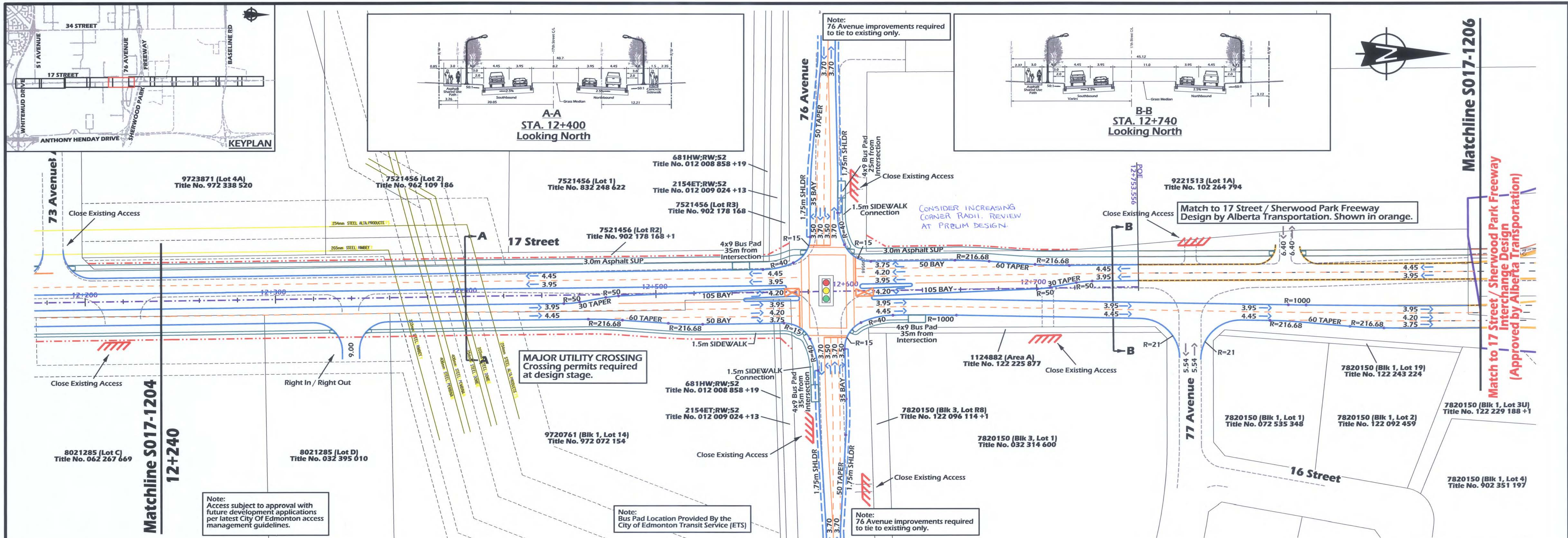
Manager, Transportation Planning Branch
5/24/2013

Director, Facility & Capital Planning
5/24/2013

Director, Development Planning & Engineering
5/24/2013

DRAWN: TD
REVIEWED:
DATE: 2013 04 09

PLAN NO. S017-1204



LEGEND

- Proposed Right of Way
- Proposed Face of Curb
- Proposed Pavement Markings
- Railway
- Gas Pipeline
- 4x9 Bus Stop Pad
- Railroad Crossing Signals
- Guide Arrows Only
- Access Closure

DESIGN SPEED = 70 km/h
POSTED SPEED = 60 km/h

Note: Road dimensions for the City of Edmonton are to the Face of Curb

McElhanney Consulting Services Ltd.

Edmonton TRANSPORTATION SERVICES

STRATHCONA COUNTY

PROFESSIONAL ENGINEER ALBERTA
Ryan T. Benke
P. ENG. DATE: April 19, 2013
PERMIT TO PRACTICE P6383

Manager, Transportation Planning Branch
May 15, 2013
Director, Facility & Capital Planning
May 22, 2013
Director, Development Planning & Engineering

CONCEPT - SUBJECT TO PRELIMINARY SURVEY AND DESIGN

17th Street
Arterial Widening
Whitemud Dr to Knightsbridge Rd

20m 0 40m
Hor. 2m 0 4m
Ver. 2m 0 4m

DRAWN: TD
REVIEWED:
DATE: 2013 04 09

PLAN NO.
S017-1205