



90 Avenue Concept Planning Study

WELCOME TO THE

**90 AVENUE CONCEPT PLANNING STUDY
(75 STREET TO 85 STREET)**

OPEN HOUSE

May 22, 2014



90 Avenue Concept Planning Study

MEETING PURPOSE

- ❖ Share our plans for 90 Avenue
- ❖ Obtain your feedback on the plans
- ❖ Discuss your ideas on how to improve the plans



Have Your Say!

Please respond to the questionnaire
to share your input



90 Avenue Concept Planning Study

PROJECT PURPOSE

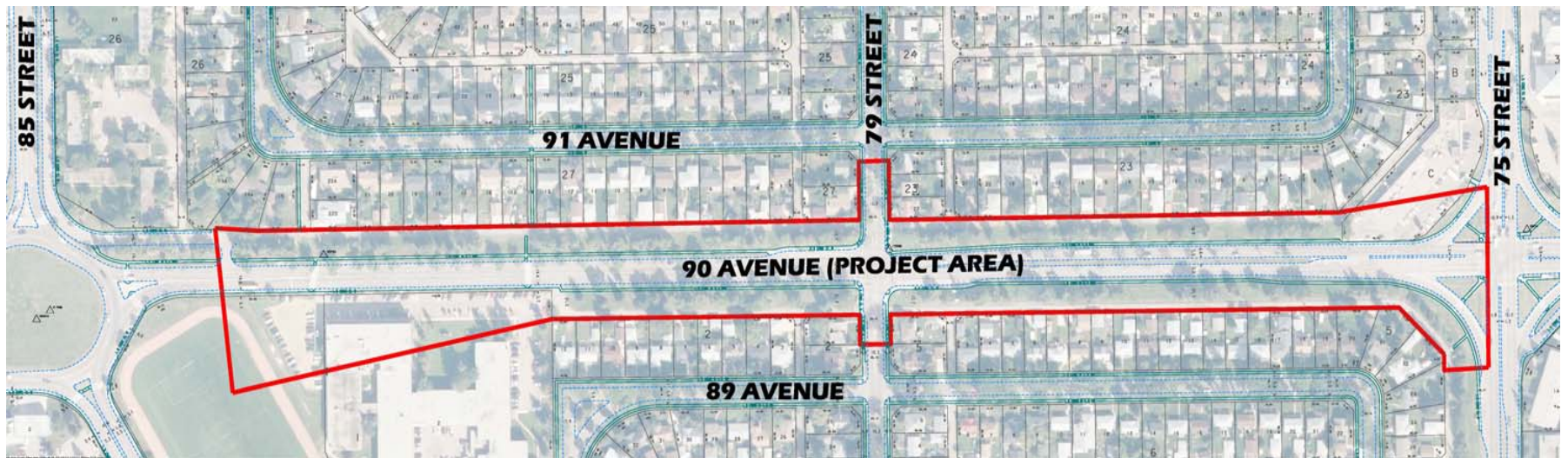
90 Avenue between 75 Street and 85 Street serves as a major commuter and goods movement corridor, which carries significant traffic flow from 75 Street moving into the downtown area. A recent City arterial road pavement condition evaluation found it to be one of the poorest roads in Edmonton.

The purpose of this study is to develop a concept plan for 90 Avenue in advance of road reconstruction scheduled for 2015.



90 Avenue Concept Planning Study

PROJECT LIMIT



90 Avenue Concept Planning Study

KEY ISSUES

- **Safety and efficiency of intersections.**
- **Pedestrian and Cyclist accommodation.**
- **Traffic growth and flow.**
- **Management of vehicle access to the local school, communities and businesses.**

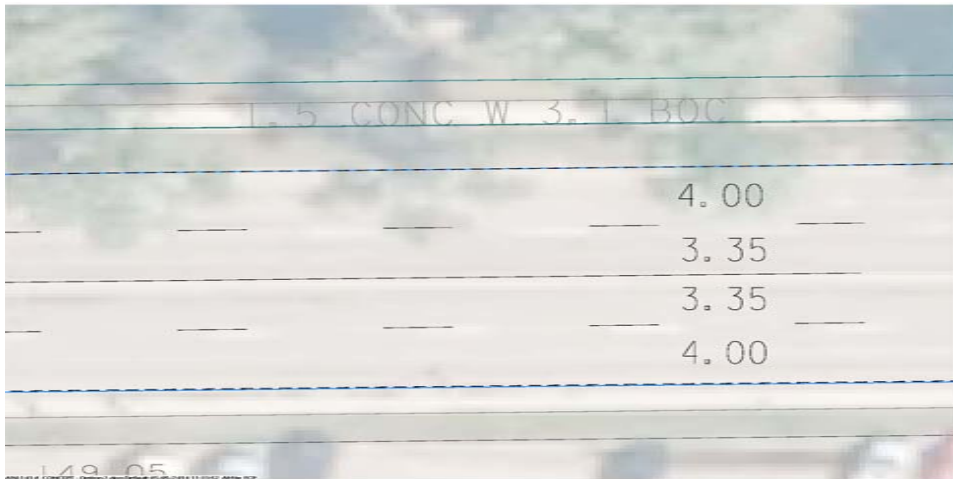


Accessed 8 MAY. 2014. <https://www.google.com/maps/@53.525156,-113.449556,3a,75y,116.61h,81.99t/data=!3m4!1e1!3m2!1s9_gGu3EypdcX13WwpS50FAI2e0>

90 Avenue Concept Planning Study

OPTION A

- Changes to lane width from 4.00m and 3.35 to 3.90 and 3.45 respectively
- Improvement to pavement and sidewalks



EXISTING LANE WIDTHS



NEW LANE WIDTHS



90 Avenue Concept Planning Study

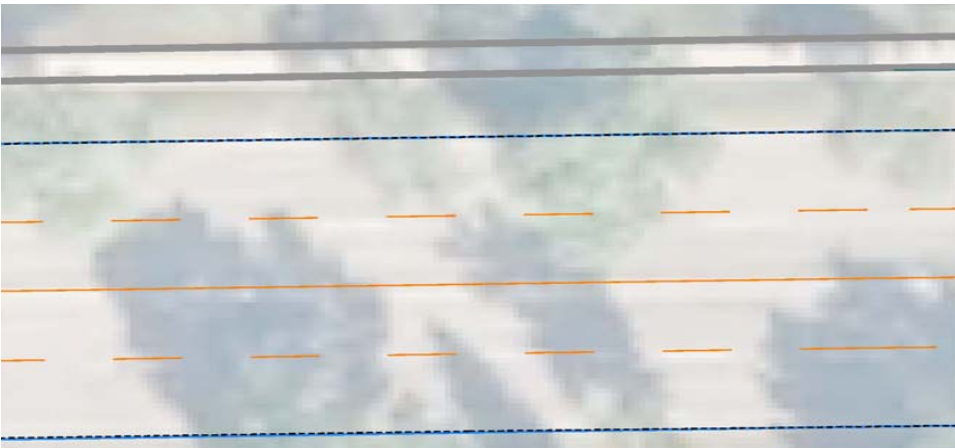
Option B

Option B includes all improvements from Option A with the addition of the following potential improvements.

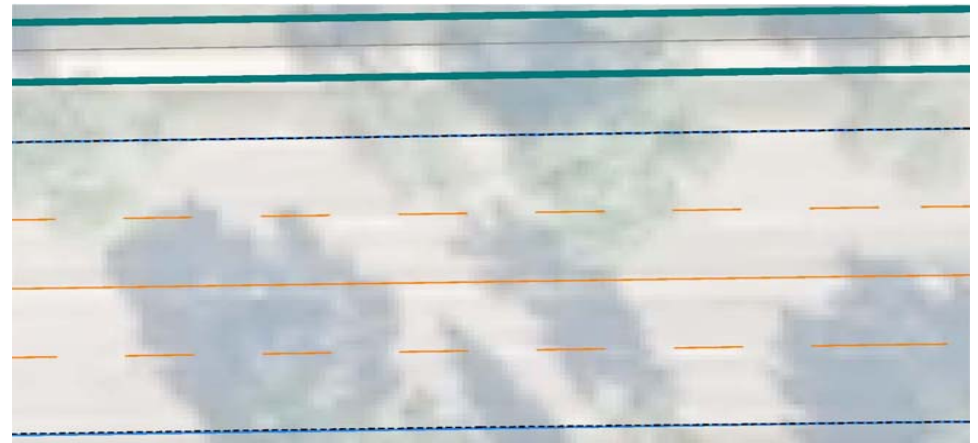
1. Replace sidewalk with Shared Use Path on North side of 90 Avenue
2. Changes to right turn “pork chop” median at 75 Street
3. Widening of sidewalk in front of school
4. Access closure at school
5. Median closure West of 75 Street
(See Roll Plan)

90 Avenue Concept Planning Study

Option B - IMPROVEMENT 1



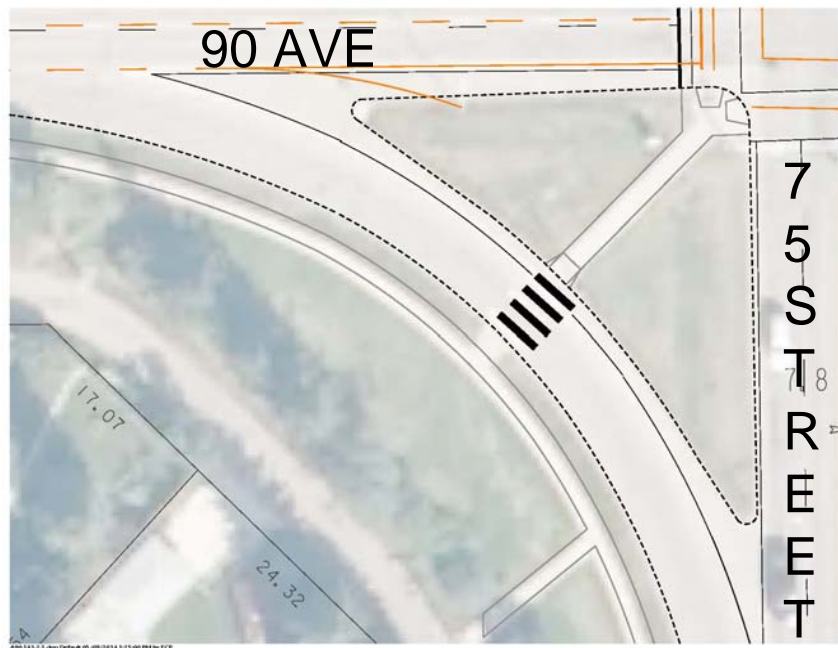
EXISTING 1.5m SIDEWALK



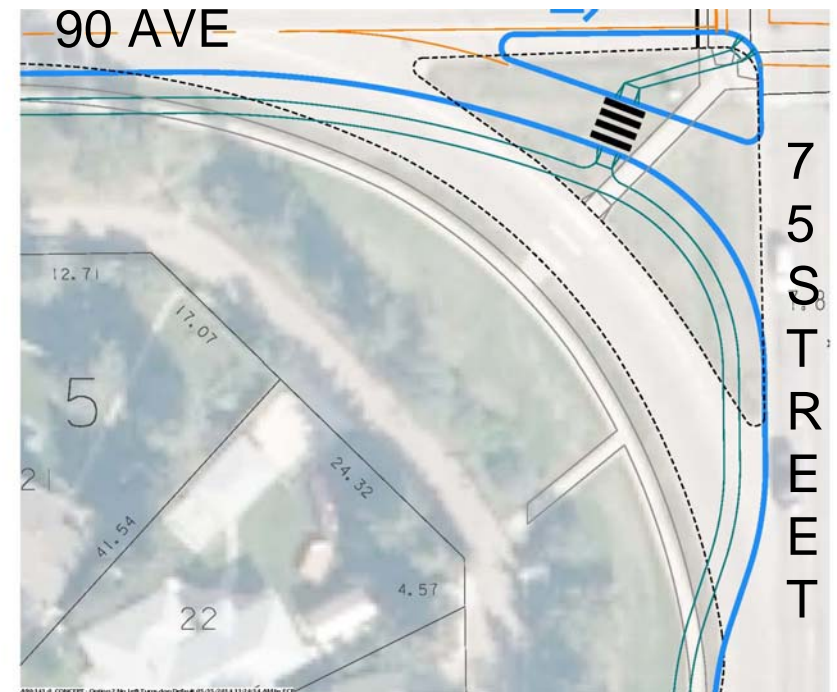
PROPOSED 3.0m S.U.P

90 Avenue Concept Planning Study

Option B - IMPROVEMENT 2



EXISTING PORK CHOP ISLAND



PROPOSED PORK CHOP ISLAND

90 Avenue Concept Planning Study

Option B - IMPROVEMENT 3



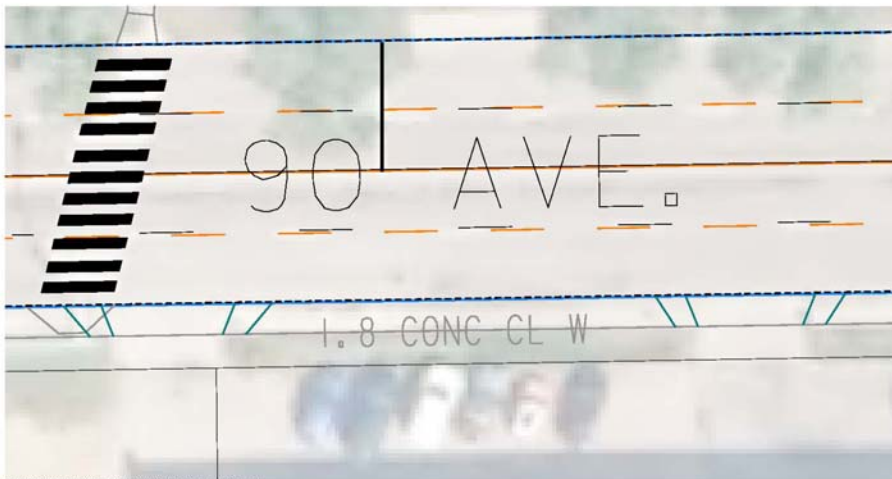
EXISTING 1.8m MONOWALK AT SCHOOL



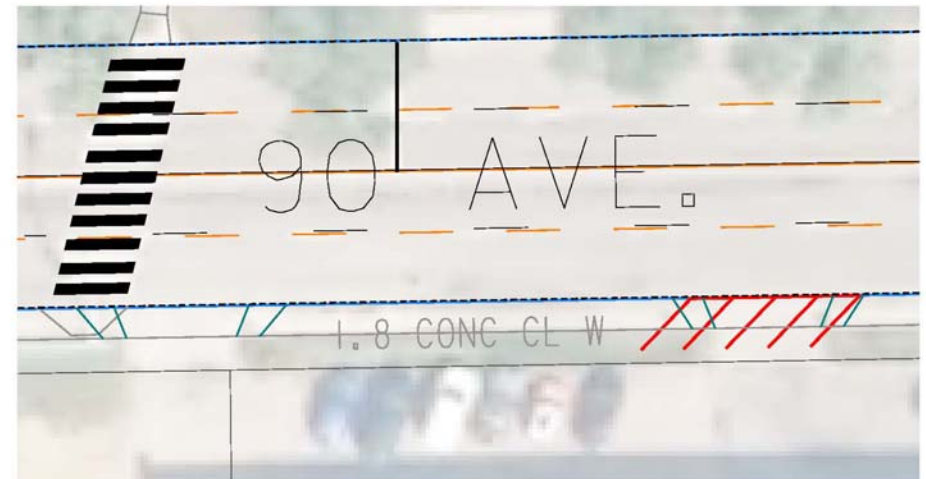
NEW 2.0m MONOWALK AT SCHOOL

90 Avenue Concept Planning Study

Option B - IMPROVEMENT 4



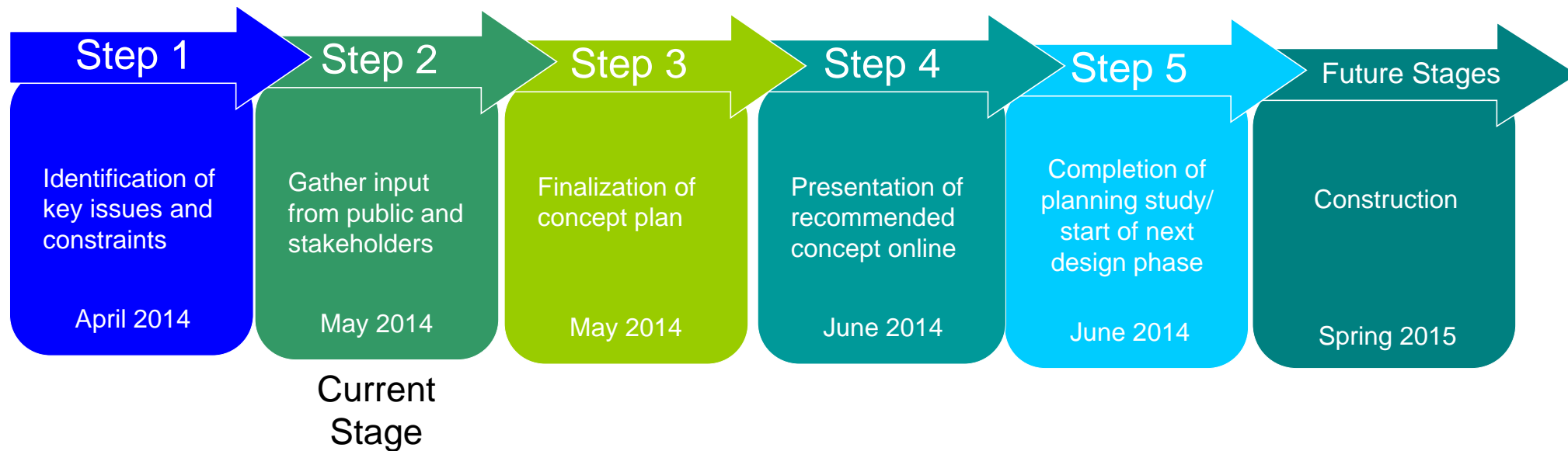
BOTH ACCESSES OPEN



EAST SIDE ACCESS CLOSED

90 Avenue Concept Planning Study

PROJECT TIMELINE





90 Avenue Concept Planning Study

THANK YOU

Tell us how we did!

Please complete a questionnaire. If you prefer, take one to fill in and submit via mail, e-mail, or fax by June 5, 2014. Questionnaires are also available online until June 5, 2014.

Mail: City of Edmonton
Attn: Joleen Harris
13th Floor, Century Place
9803 – 102A Avenue NW
Edmonton, Alberta T5J 3A3

Email: Joleen.Harris@edmonton.ca

Fax: 780-496-4287

Website: www.edmonton.ca/roadplans

