

# LEGEND

	Proposed Right of Way		Access Closure
	Proposed Roadway		4x9 Bus Stop Pad
	Existing Roadway		
	Railway		
	3m Asphalt SUP		
	1.5m Concrete Sidewalk		

DESIGN SPEED = 70 km/h  
POSTED SPEED = 60 km/h

Note:  
Road dimensions for the City of  
Edmonton are to the Face of Curb

**McElhanney**  
Consulting Services Ltd.

THE CITY OF  
**Edmonton**  
TRANSPORTATION  
SERVICES

**STRATHCONA**  
COUNTY

PERMIT TO PRACTICE P6383

Manager, Transportation Planning Branch

Director, Facility & Capital Planning

CONCEPT - SUBJECT TO PRELIMINARY SURVEY AND DESIGN

## Figure 2-1

34 Street, Whitemud Dr to 51 Avenue  
Interim Alignment

20m 0 40m

DRAWN: TD  
REVIEWED:  
DATE: 2013 03 04

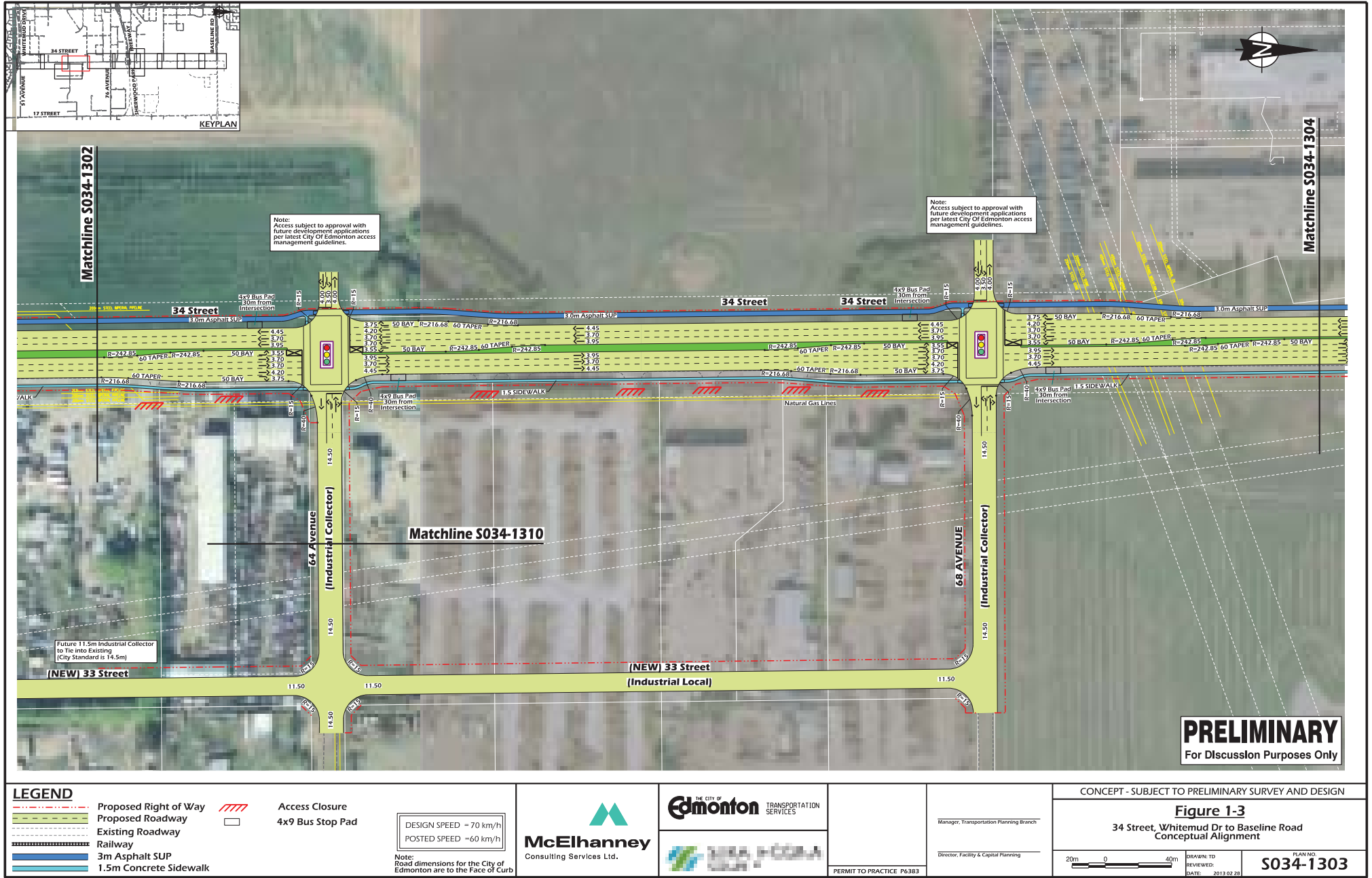
PLAN NO.  
**S034-1301**



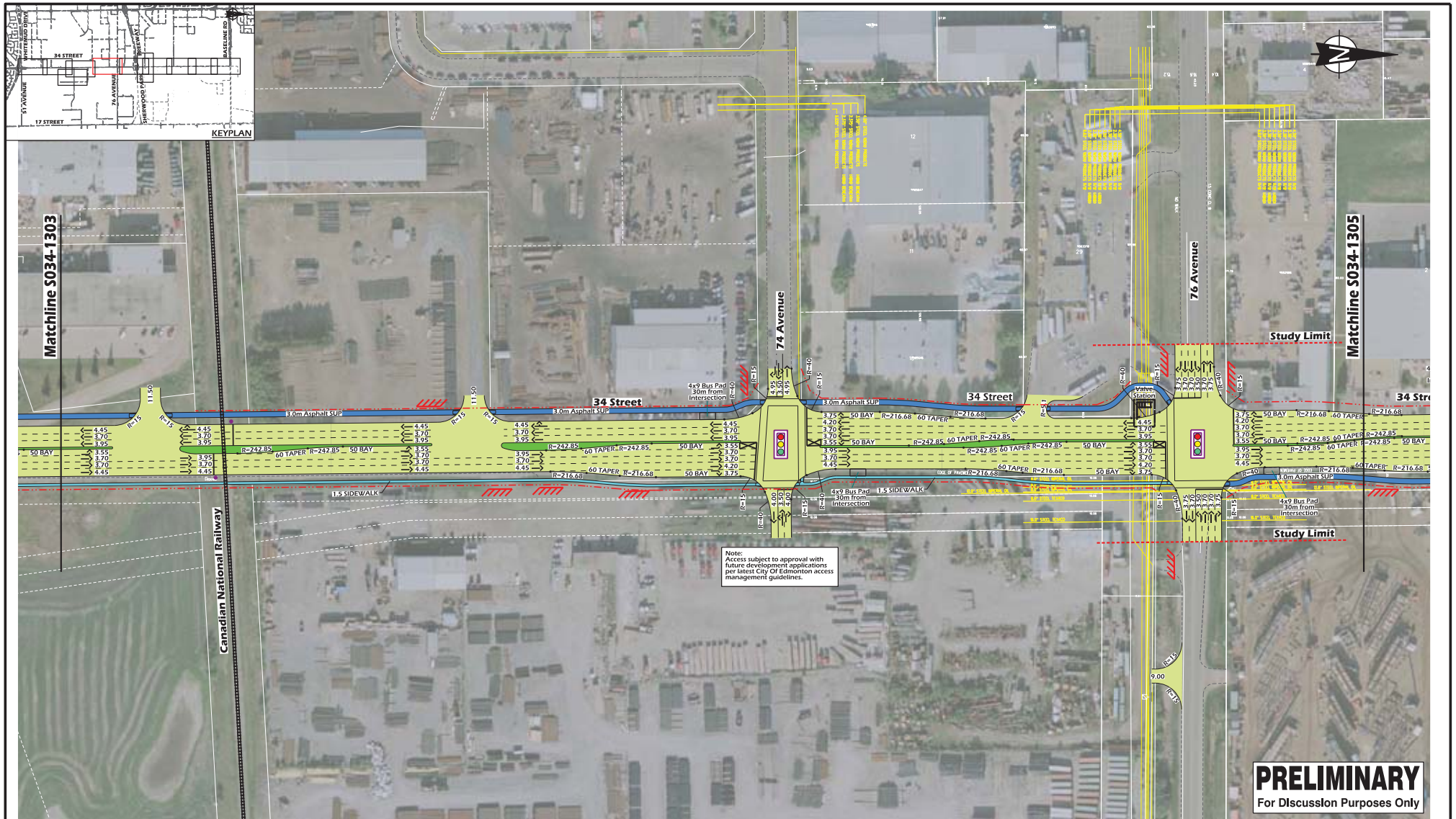












**PRELIMINARY**  
For Discussion Purposes Only

# LEGEND

- Proposed Right of Way
- Proposed Roadway
- Existing Roadway
- Railway
- 3m Asphalt SUP
- 1.5m Concrete Sidewalk

- Access Closure
- 4x9 Bus Stop Pad

DESIGN SPEED = 70 km/h  
POSTED SPEED = 60 km/h

Note: Road dimensions for the City of Edmonton are to the Face of Curb

**McElhanney**  
Consulting Services Ltd.

THE CITY OF  
**Edmonton**  
TRANSPORTATION SERVICES

**STRATHCONA**  
COUNTY

PERMIT TO PRACTICE P6383

Manager, Transportation Planning Branch

Director, Facility & Capital Planning

CONCEPT - SUBJECT TO PRELIMINARY SURVEY AND DESIGN

## Figure 1-4

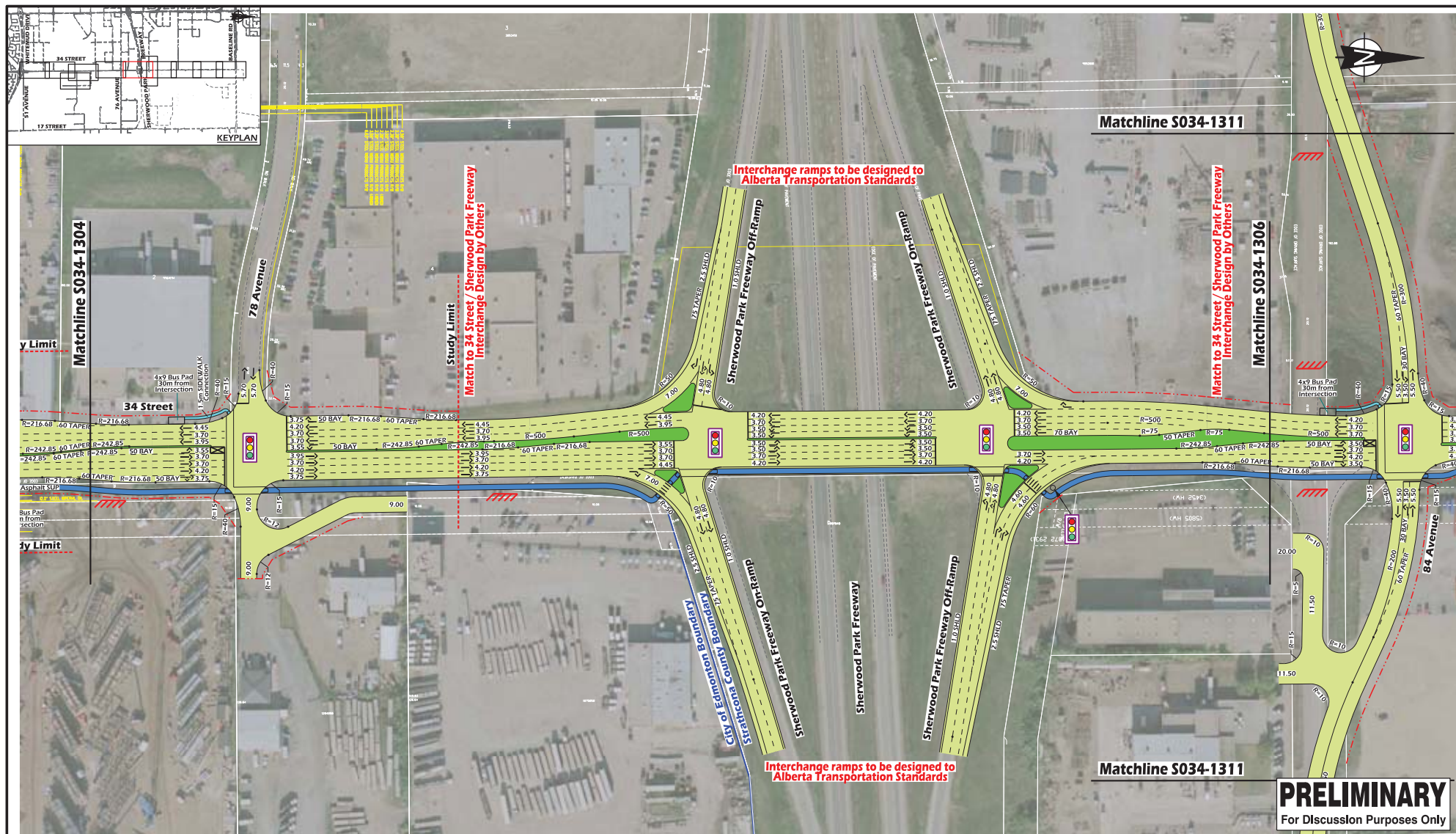
34 Street, Whitemud Dr to Baseline Road  
Conceptual Alignment

20m 0 40m

DRAWING TO  
REVIEWED  
DATE: 2013 02 28

PLAN NO.  
**S034-1304**





# LEGEND

- Proposed Right of Way
- Proposed Roadway
- Existing Roadway
- Railway
- 3m Asphalt SUP
- 1.5m Concrete Sidewalk



- Access Closure
- 4x9 Bus Stop Pad

DESIGN SPEED = 70 km/h  
POSTED SPEED = 60 km/h

Note: Road dimensions for Strathcona County are to lip of gutter



PERMIT TO PRACTICE P6383

Manager, Transportation Planning Branch

Director, Facility & Capital Planning

CONCEPT - SUBJECT TO PRELIMINARY SURVEY AND DESIGN

## Figure 1-5

34 Street, Whitemud Dr to Baseline Road  
Conceptual Alignment

20m 0 40m

DRAWING TO  
REVIEWED  
DATE: 2013 02 28

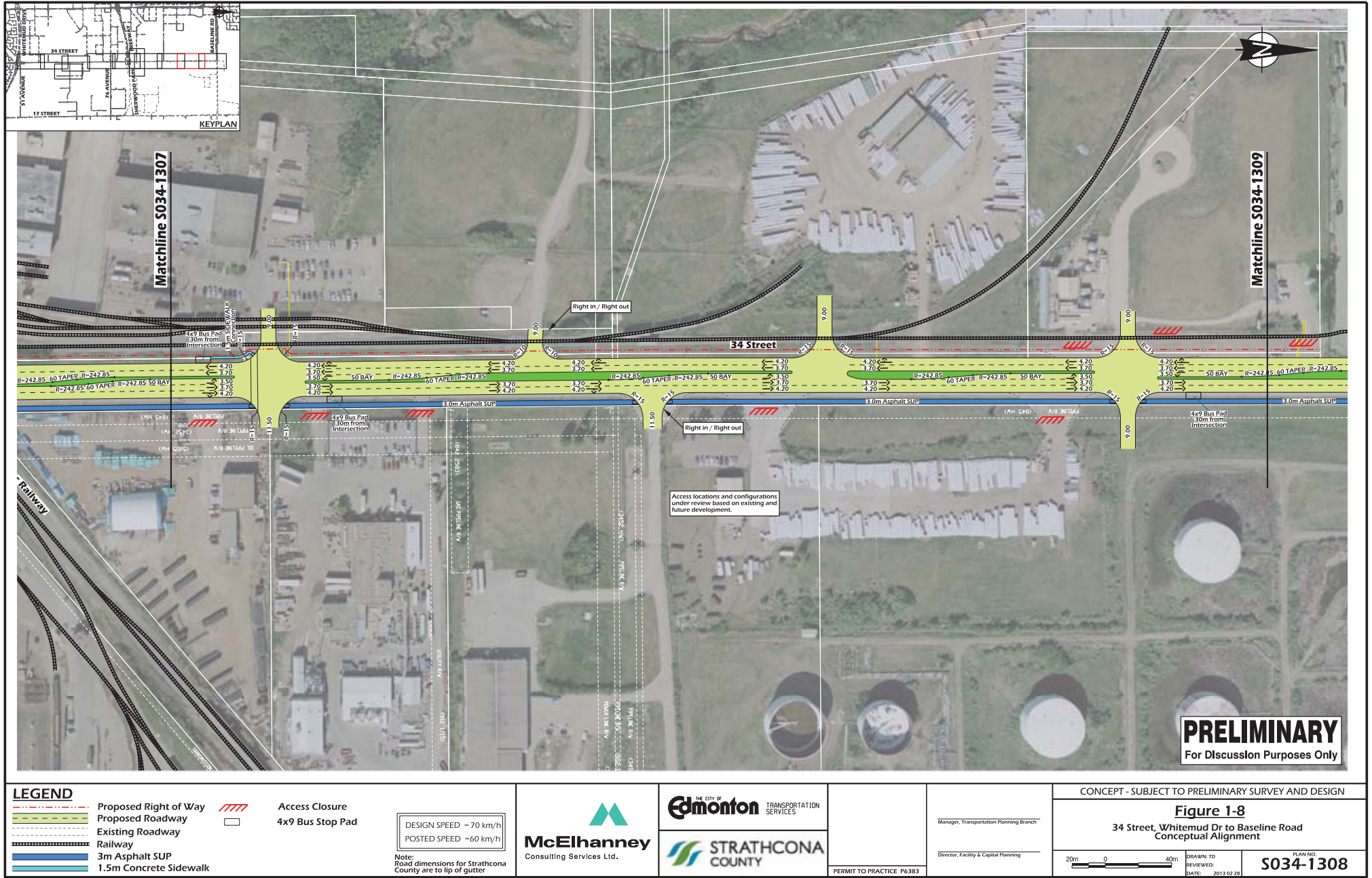
PLAN NO.  
S034-1305



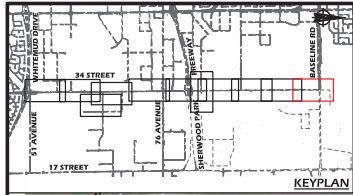












**PRELIMINARY**  
For Discussion Purposes Only

<p><b>LEGEND</b></p> <ul style="list-style-type: none"> <li>Proposed Right of Way</li> <li>Proposed Roadway</li> <li>Existing Roadway</li> <li>Railway</li> <li>3m Asphalt SUP</li> <li>1.5m Concrete Sidewalk</li> <li>Access Closure</li> <li>4x9 Bus Stop Pad</li> </ul> <p>DESIGN SPEED = 70 km/h POSTED SPEED = 60 km/h</p> <p>Note: Road dimensions for Strathcona County are to lip of gutter</p>	<p><b>McElhanney</b> Consulting Services Ltd.</p>	<p>THE CITY OF <b>Edmonton</b> TRANSPORTATION SERVICES</p> <p><b>STRATHCONA COUNTY</b></p>	<p>PERMIT TO PRACTICE P6383</p>	<p>Manager, Transportation Planning Branch</p> <p>Director, Facility &amp; Capital Planning</p>	<p>CONCEPT - SUBJECT TO PRELIMINARY SURVEY AND DESIGN</p> <p><b>Figure 1-9</b> 34 Street, Whitemud Dr to Baseline Road Conceptual Alignment</p> <p>20m 0 40m</p> <p>DRAWING TO REVIEWED DATE: 2013 02 28</p> <p>PLAN NO: <b>S034-1309</b></p>
--	---	--	---------------------------------	---	---