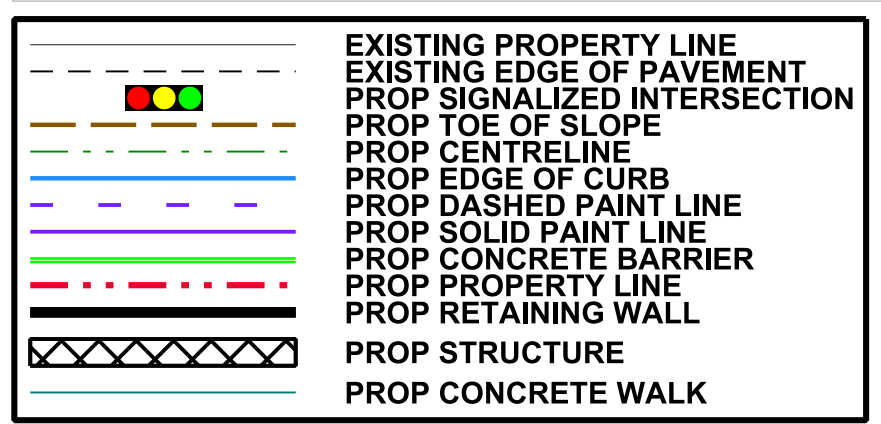
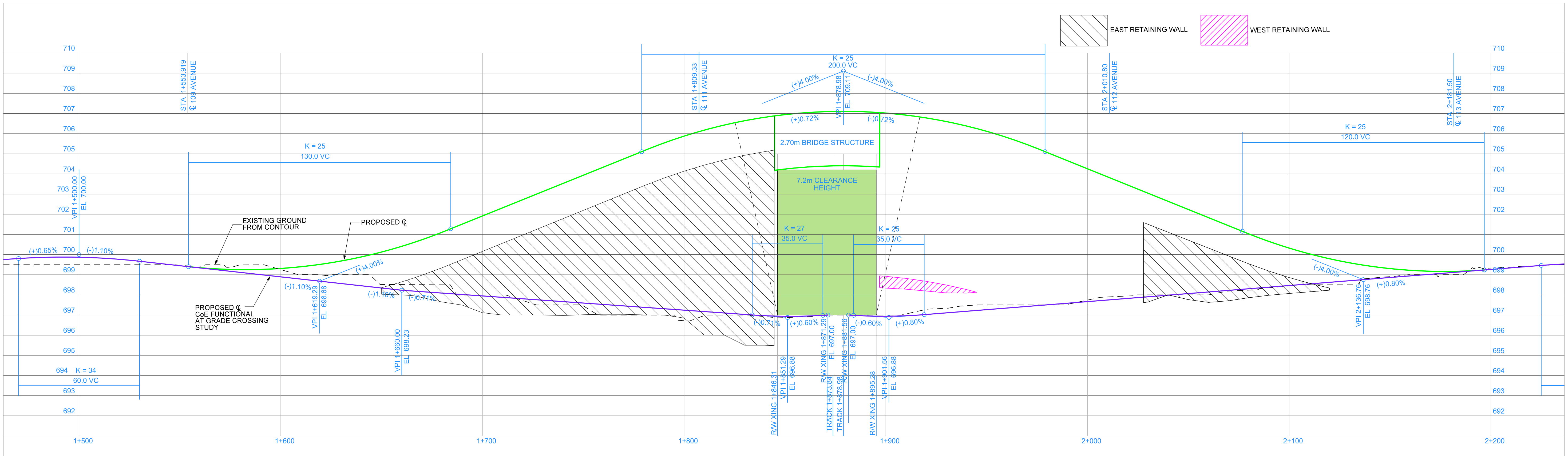
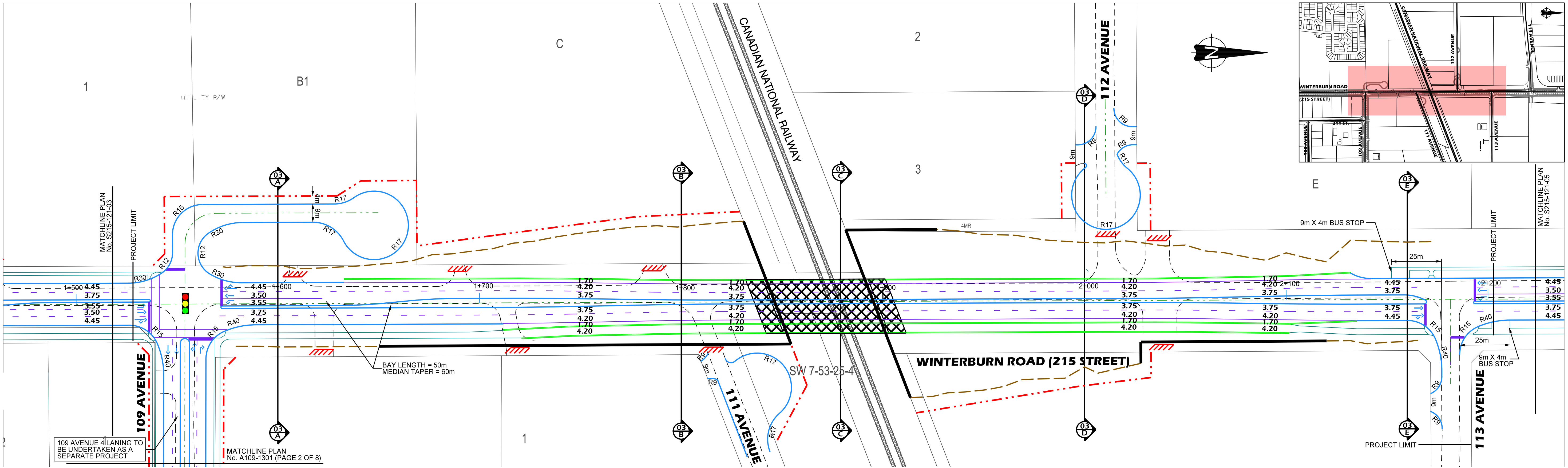
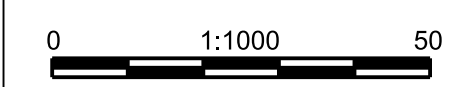


LAST SAVED: 4/26/2014 12:16:46 PM -rbishop1  
PATH: c:\pw\_work\in\den001\rbishop1\dms5364XXXX-Option1A.dgn

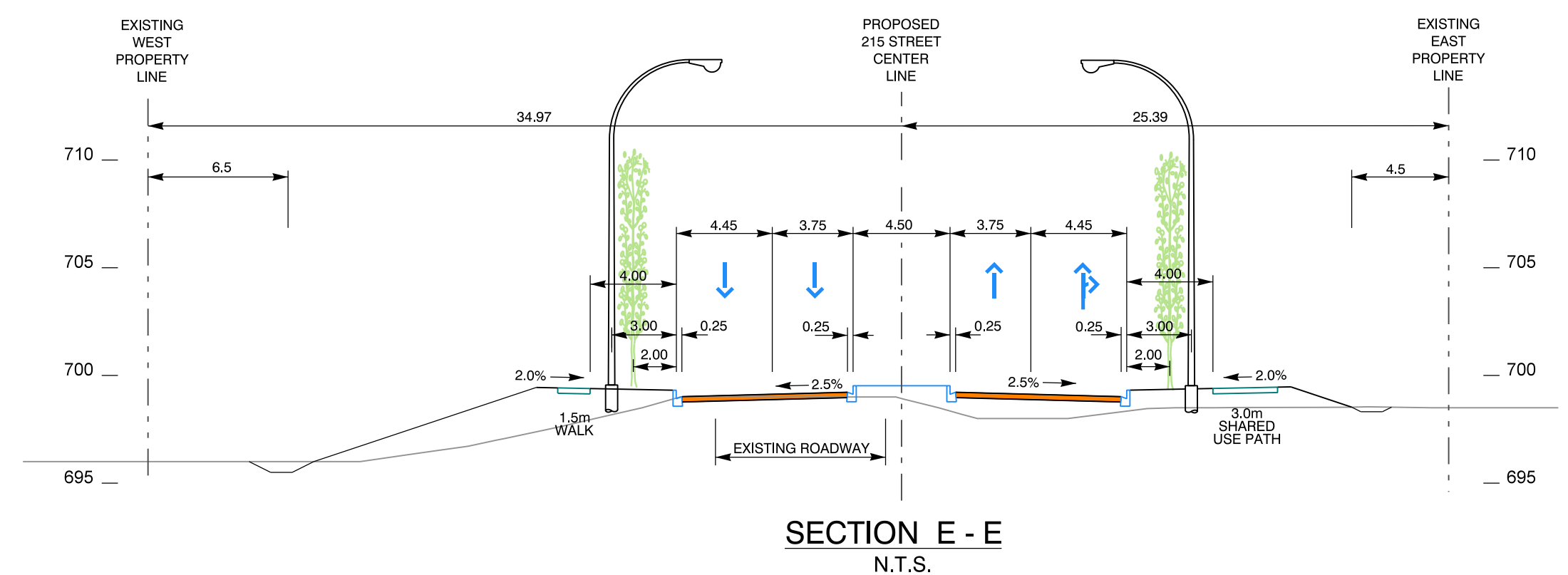
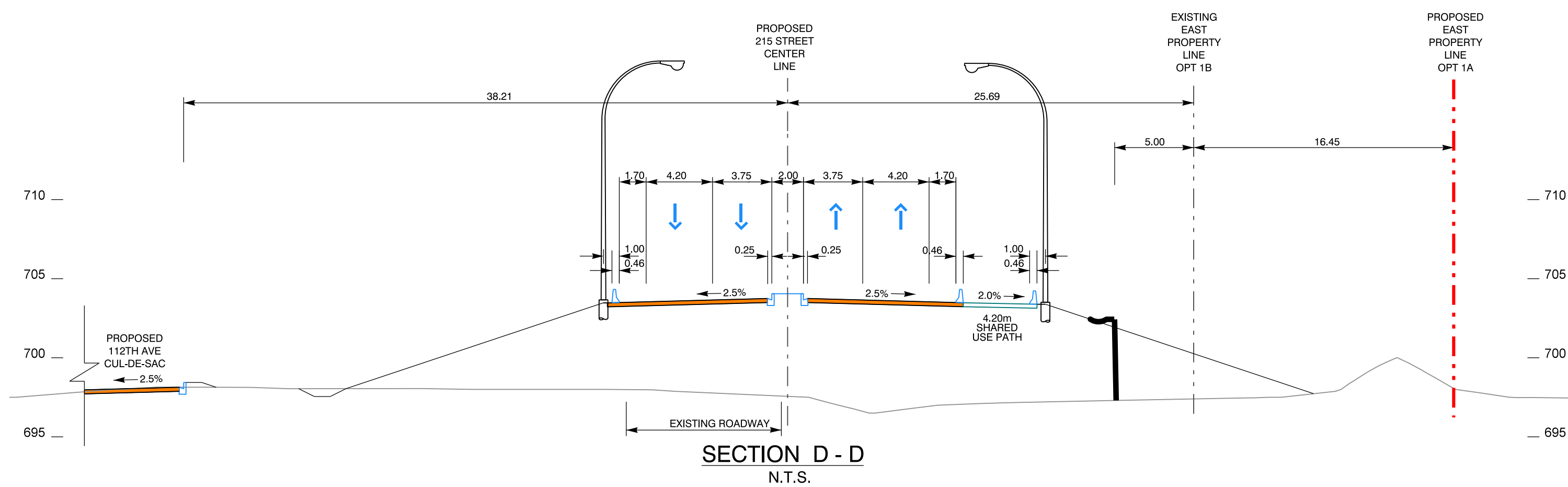
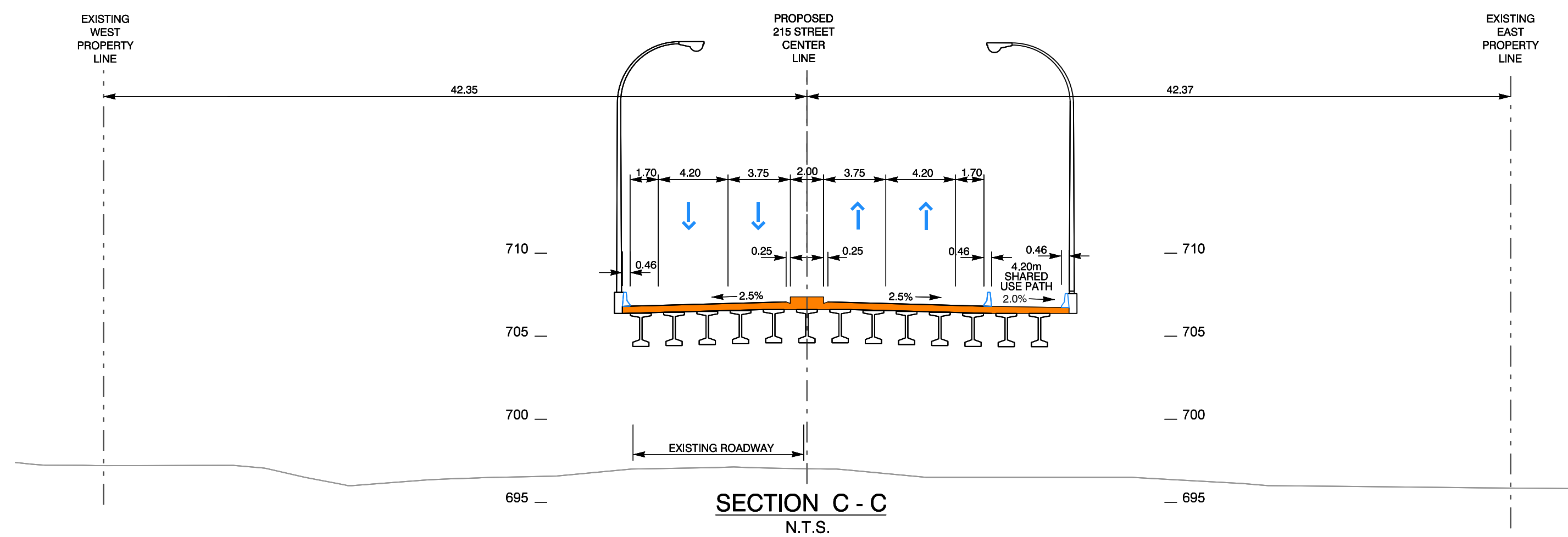
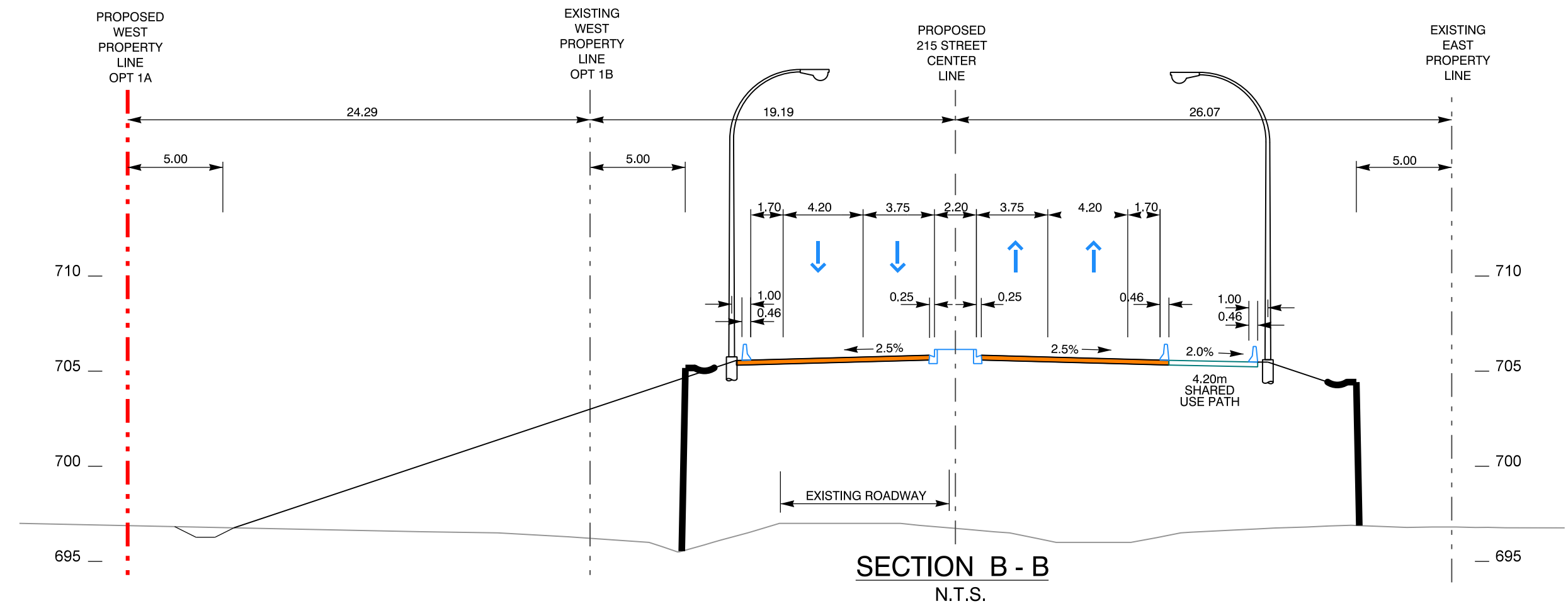
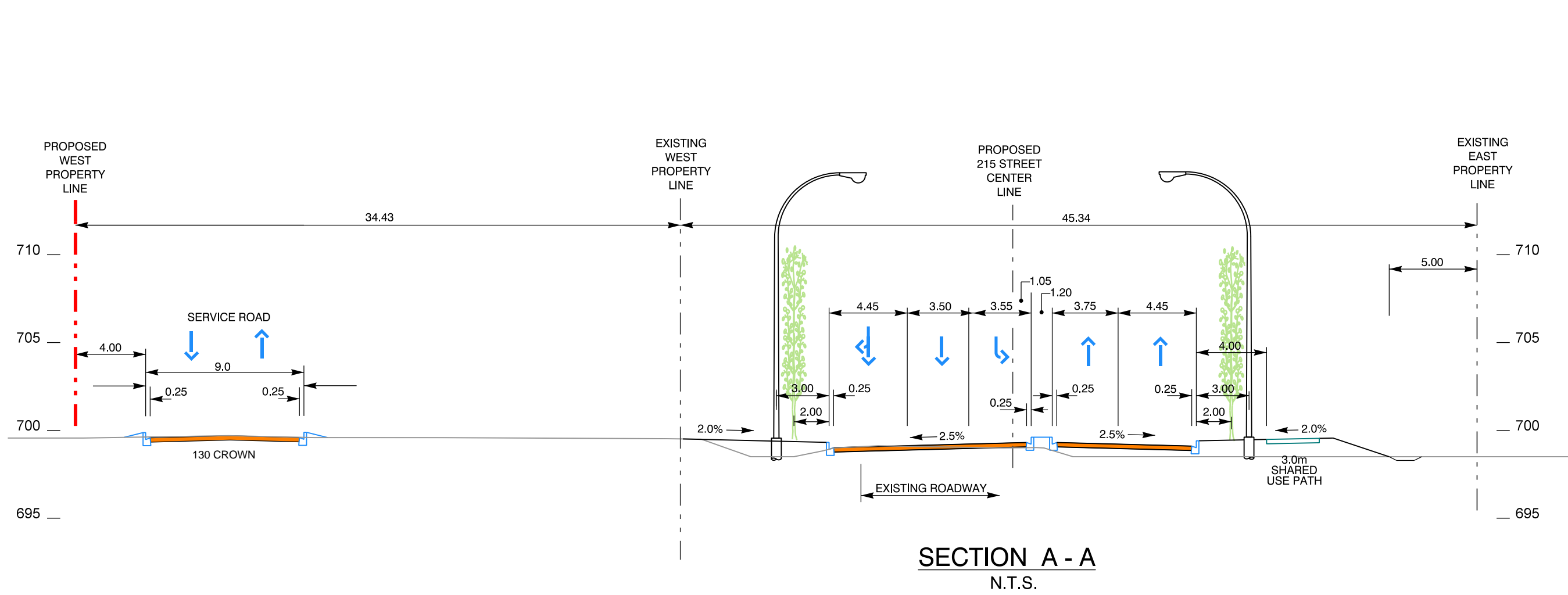


NOTE:  
PROPERTY ACCESS LOCATIONS WILL  
BE REVIEWED AND FINALIZED DURING  
PRELIMINARY ENGINEERING PHASE

DESIGN SPEED = 70 km/h  
POSTED SPEED = 60 km/h



Manager, Transportation Planning Branch	CONCEPT - SUBJECT TO PRELIMINARY SURVEY AND DESIGN	
Director, Facility & Capital Planning	<b>215 STREET CNR GRADE SEPARATION</b>	
Director, Development Planning & Engineering	<b>GRADE SEPARATION PLAN &amp; PROFILE</b>	
	<b>109 AVENUE TO 113 AVENUE</b>	
		TRANSPORTATION SERVICES
	DRAWN: RB REVIEWED: DATE: APRIL 2014	PLAN NO. <b>S215-141-01</b>



NOTE:  
TYPICALS APPLY TO OVERPASS OPTIONS 1A AND 1B ONLY.  
TYPICALS FOR OVERPASS OPTIONS 2 AND 3 ARE SIMILAR  
AND THEREFORE NOT SHOWN.

LAST SAVED: 4/26/2014 1:41:19 PM - rbishop1  
PATH: c:\pw\_work\den001\rbishop1\dms3364\OverpassAlt\_Typicals.dgn

		CONCEPT - SUBJECT TO PRELIMINARY SURVEY AND DESIGN		
Manager, Transportation Planning Branch		<div>215 STREET CNR GRADE SEPARATION</div> <div>OVERPASS ALTERNATIVE - TYPICALS</div> <div>109 AVENUE TO 111 AVENUE</div>		
Director, Facility & Capital Planning				
Director, Development Planning & Engineering		<div><div><div>THE CITY OF</div><div>Edmonton</div></div><div>TRANSPORTATION SERVICES</div></div>	<div>DRAWN: RB</div> <div>REVIEWED:</div> <div>DATE: APRIL 2014</div>	<div>PLAN NO.</div> <div>OVERPASS TYPICALS</div>