

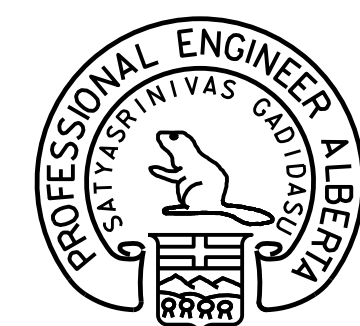
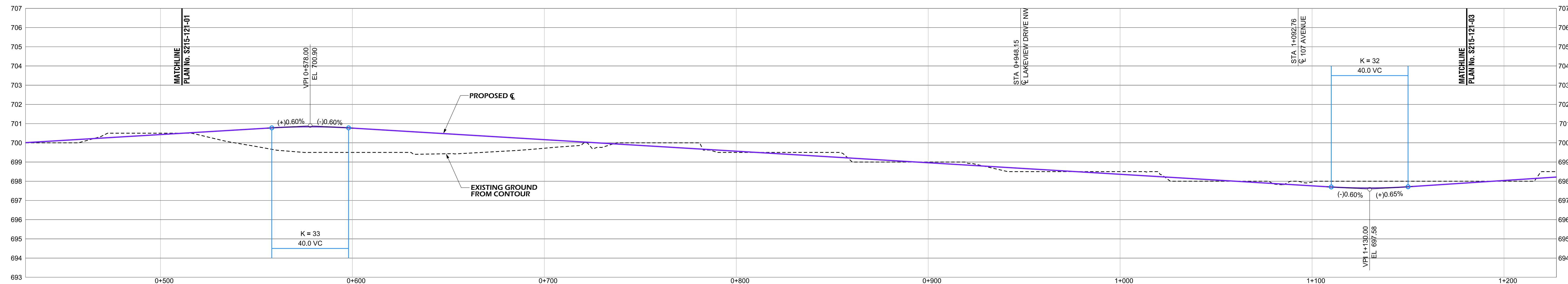
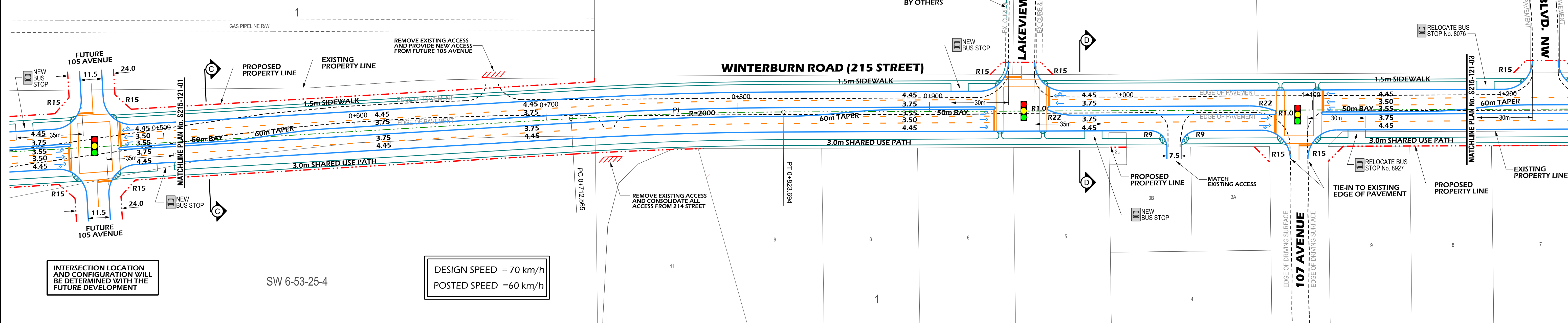
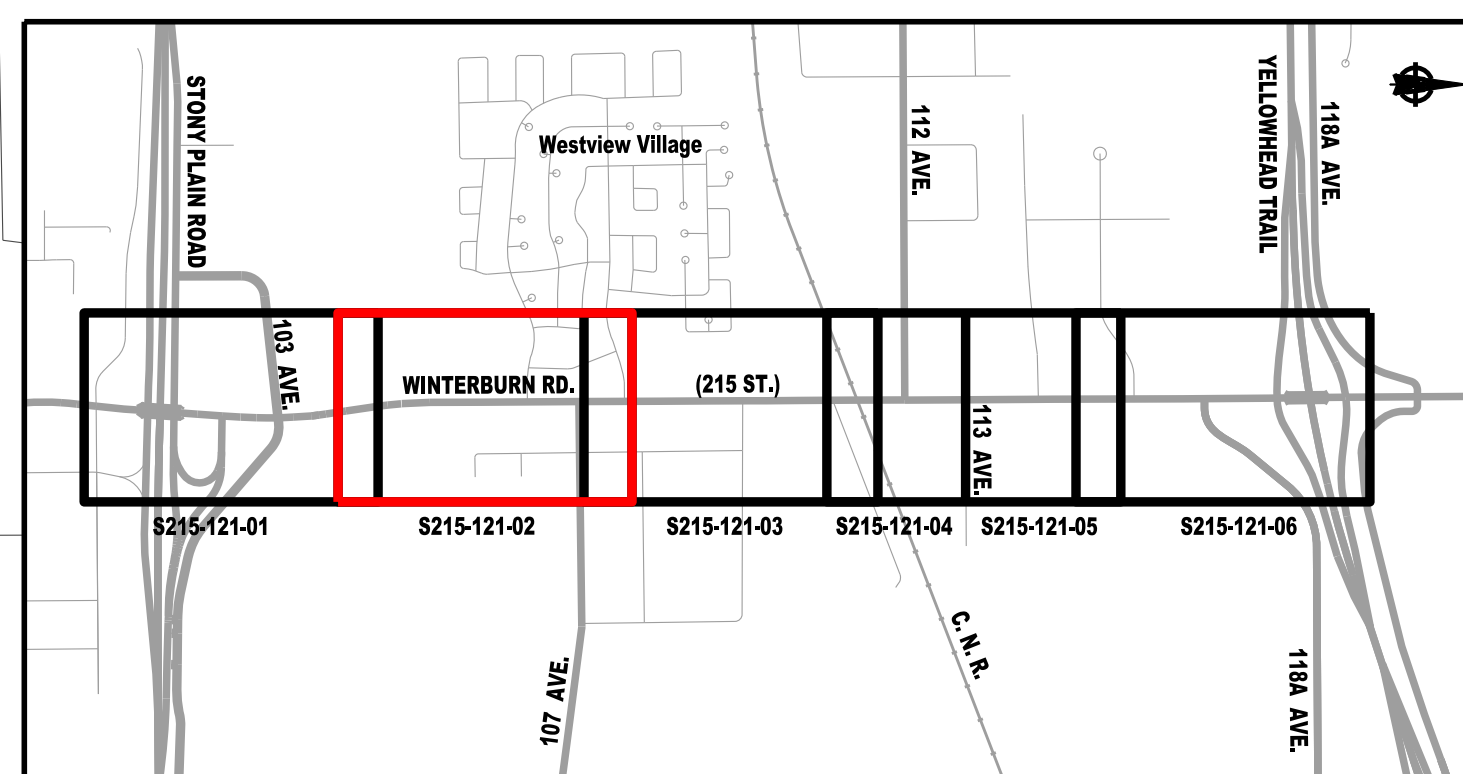
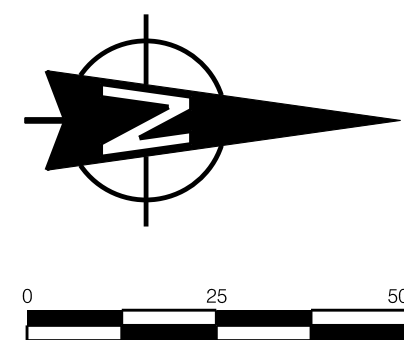
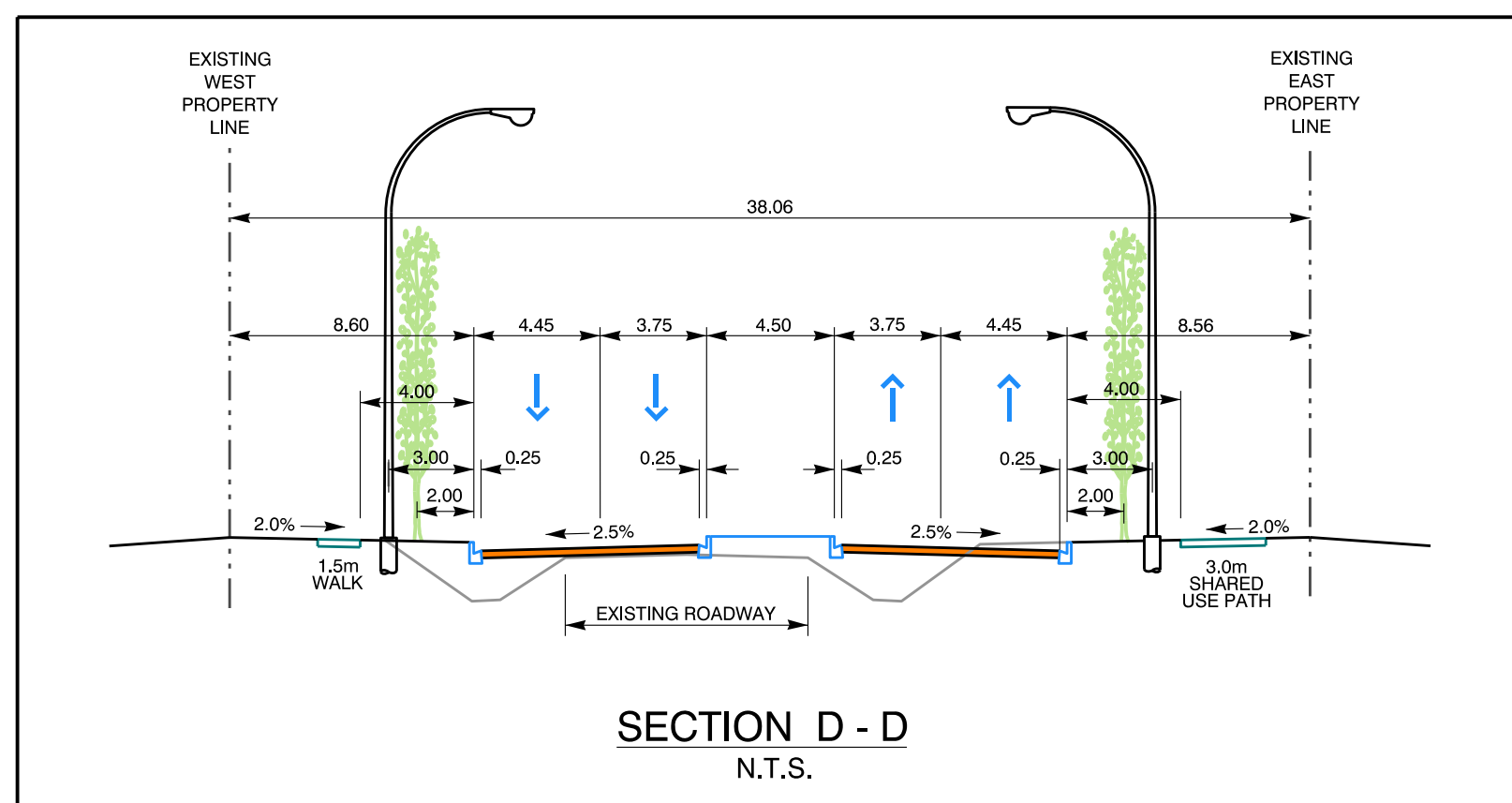
Manager, Transportation Planning Branch
Director, Facility & Capital Planning
Director, Development Planning & Engineering

CONCEPT - SUBJECT TO PRELIMINARY SURVEY AND DESIGN

215 STREET
STONY PLAIN ROAD to YELLOWHEAD TRAIL
ARTERIAL WIDENING

DRAWN: NZ/TY/KB
REVIEWED: JW
DATE: 2013 JULY

PLAN NO.
S215-121-01

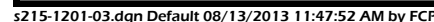


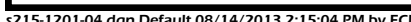
Director, Development Planning & Engineering

THE CITY OF
Edmonton

TRANSPORTATION
SERVICES

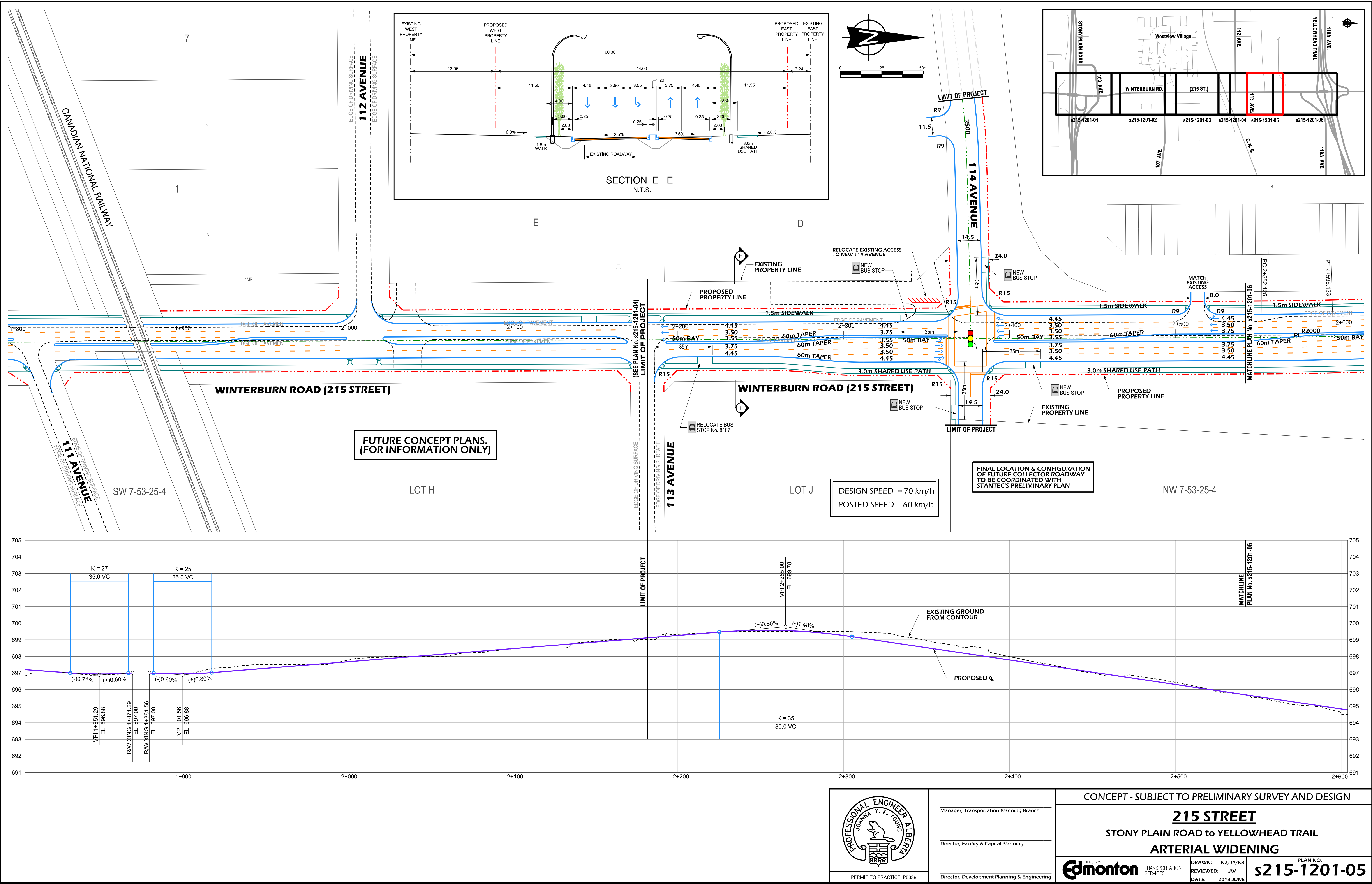
PLAN NO.
S215-121-02

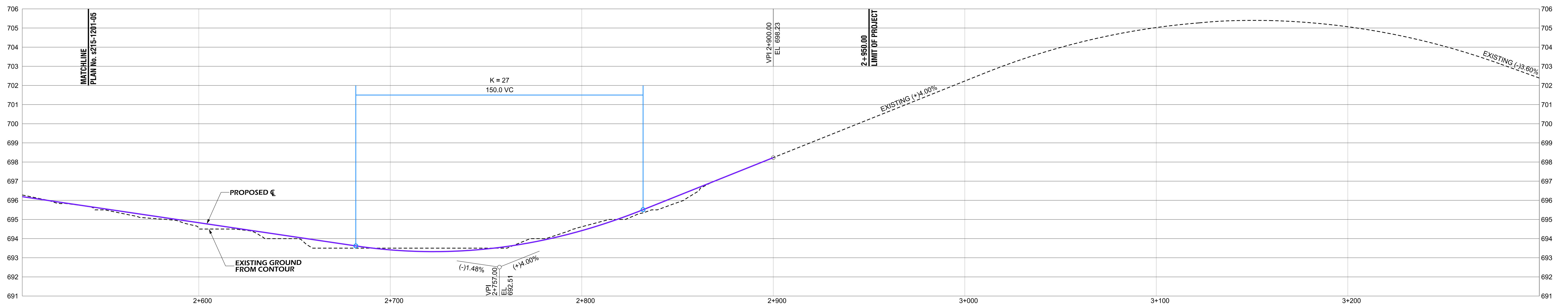
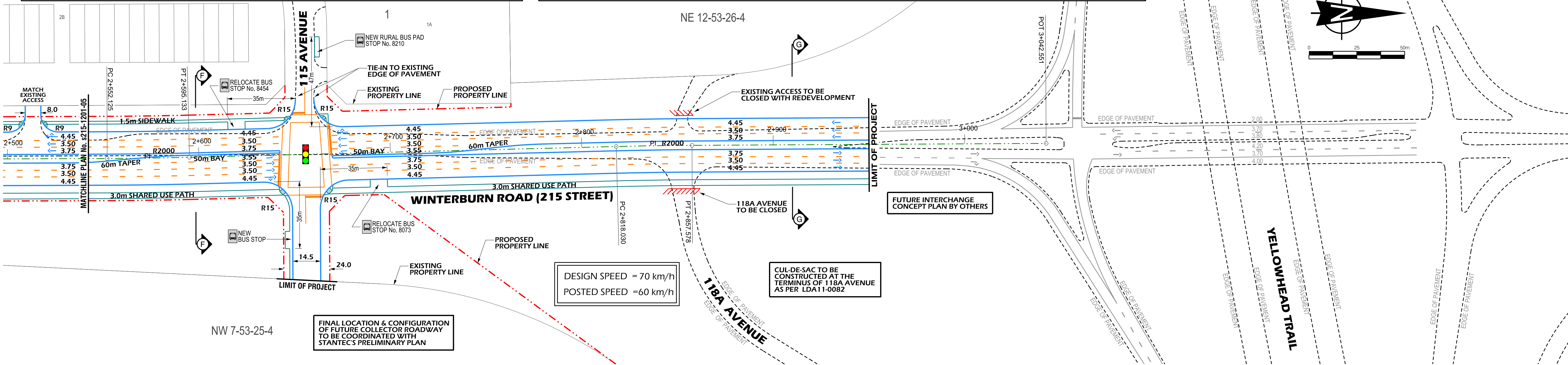
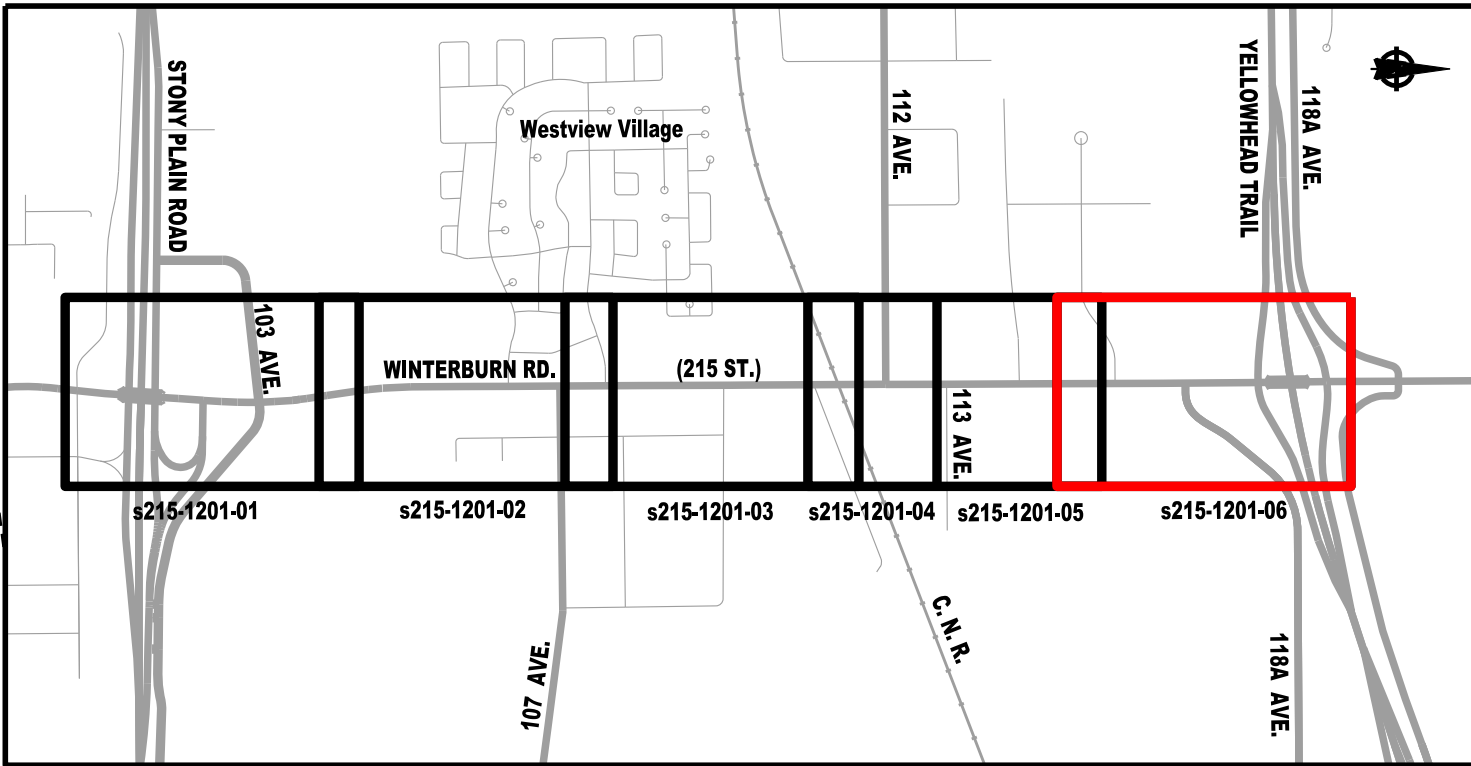
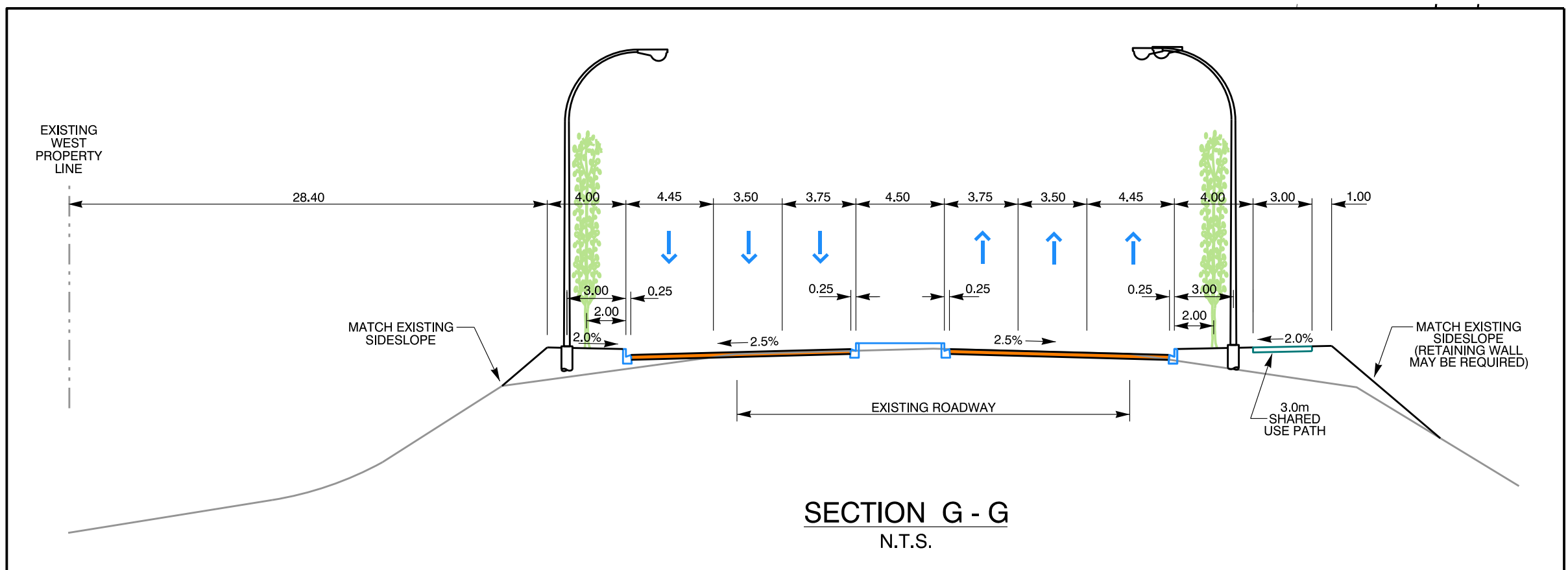
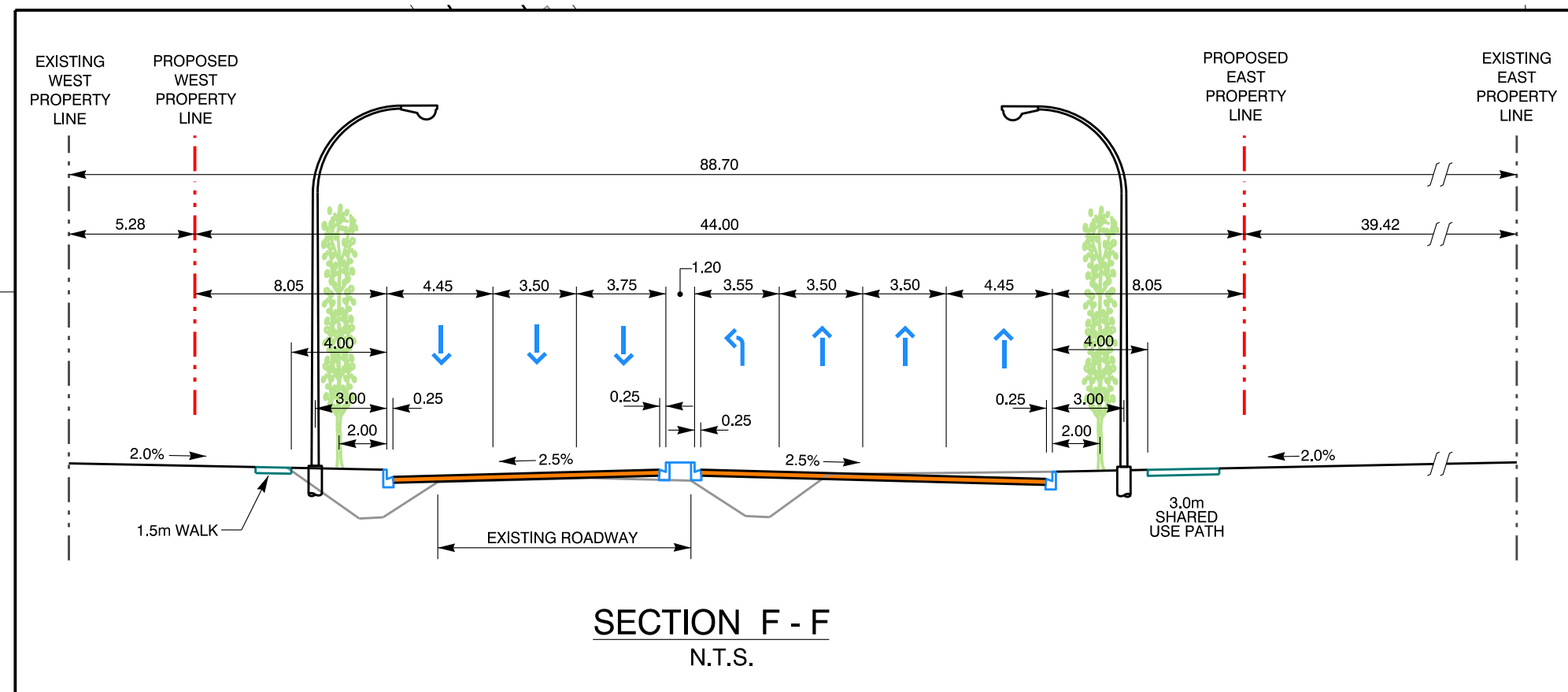


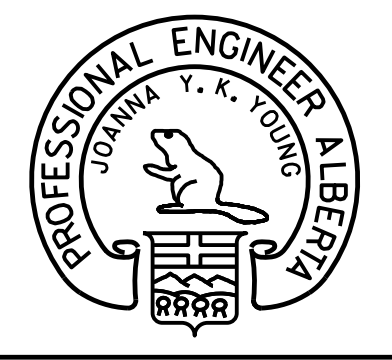



Director, Development Planning & Engineering

PLAN NO.
S215-121-04





 PERMIT TO PRACTICE P5038	Manager, Transportation Planning Branch	CONCEPT - SUBJECT TO PRELIMINARY SURVEY AND DESIGN	
	Director, Facility & Capital Planning	215 STREET STONY PLAIN ROAD to YELLOWHEAD TRAIL ARTERIAL WIDENING	
	Director, Development Planning & Engineering	 DRAWN: NZ/TY/KB REVIEWED: JW DATE: 2013 JUNE	PLAN NO. s215-1201-06