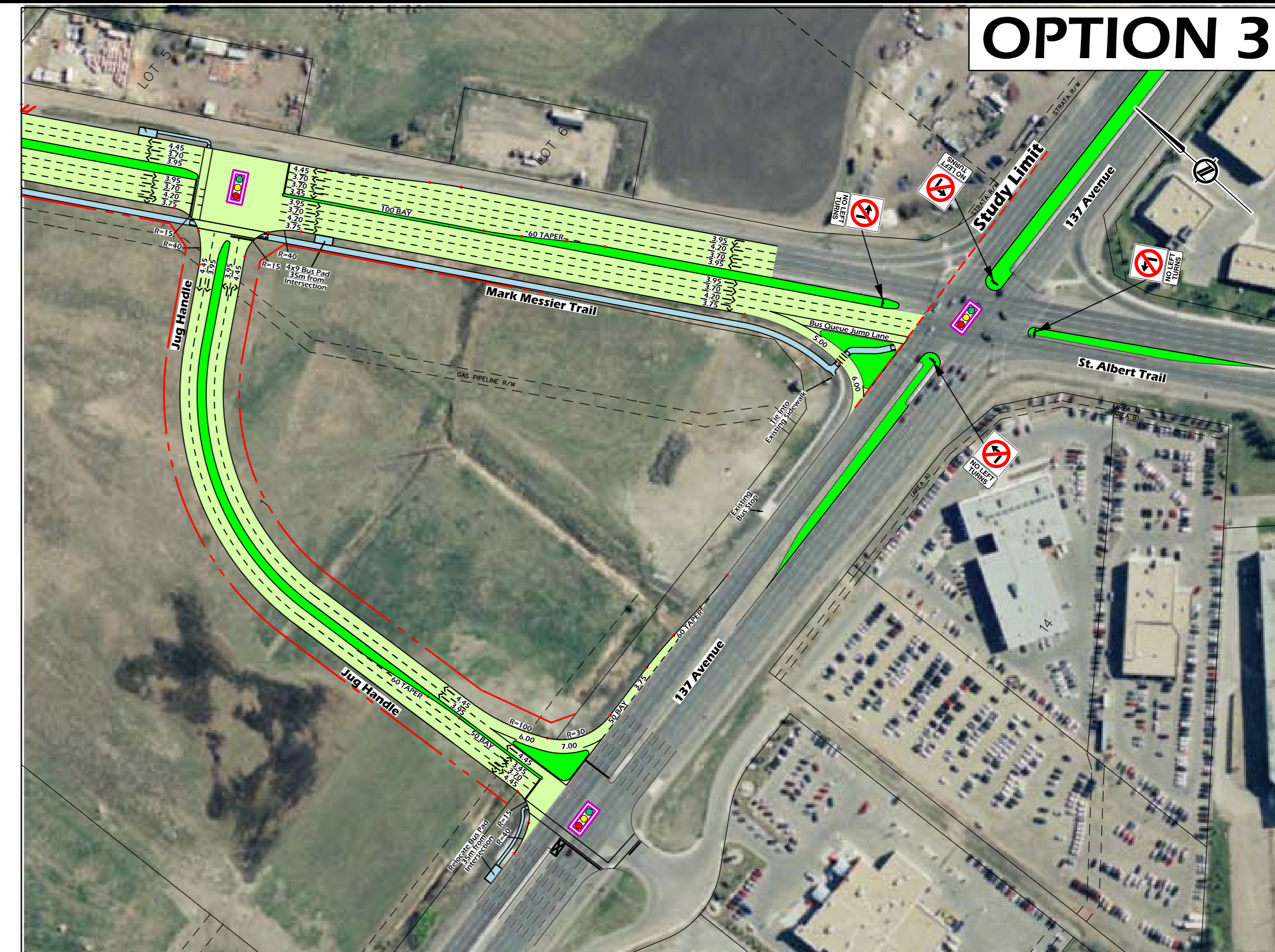
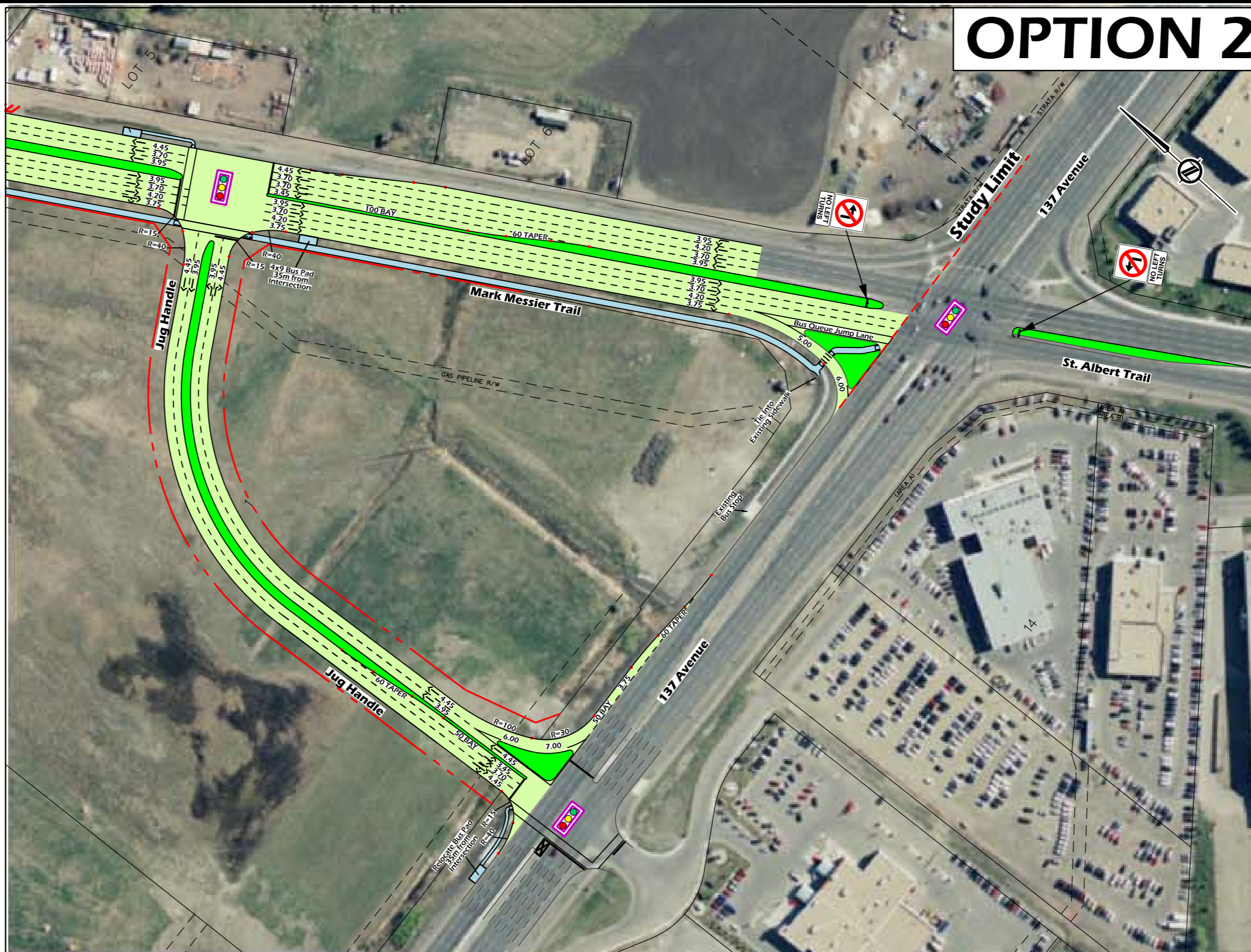
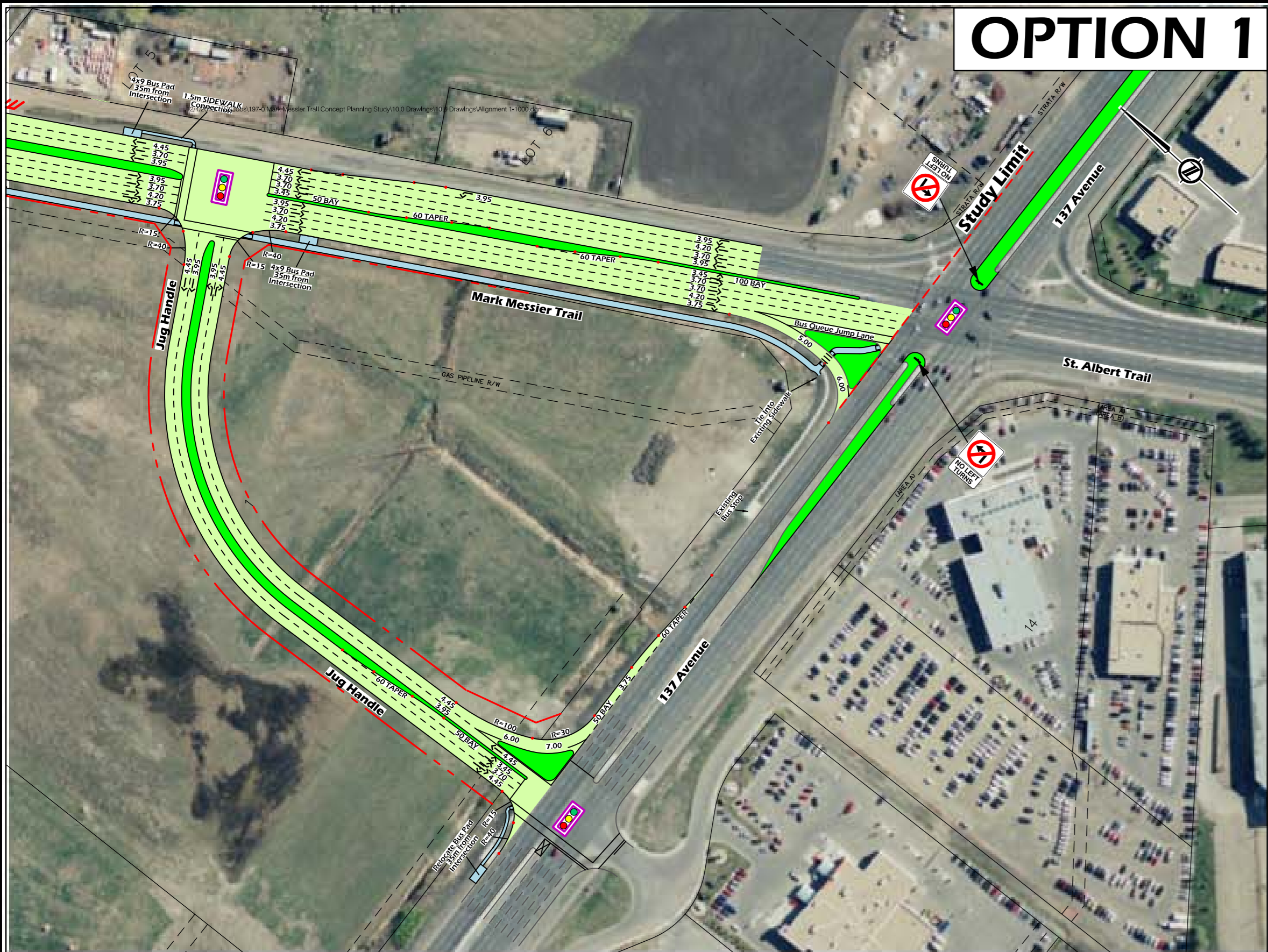


OPTION 1

OPTION 2

OPTION 3



LEGEND

- Proposed Right of Way
- Proposed Roadway
- Existing Roadway
- Railway
- Access Closure
- 4x9 Bus Stop Pad

DESIGN SPEED = 70 km/h
POSTED SPEED = 60 km/h

Note:
Road dimensions for the City of Edmonton are to the Face of Curb

McElhanney
Consulting Services Ltd.

Edmonton
TRANSPORTATION SERVICES

14904 - 121A Avenue
Edmonton, AB, T5V 1A3
Tel. 780-809-3200

CONCEPT - SUBJECT TO PRELIMINARY SURVEY AND DESIGN

137 Ave and Mark Messier Tr Intersection Options
Mark Messier Trail, 137 Avenue to TUC Boundary
Concept Drawing - Service Roads with Monowalk SUP

20m 0 40m

DRAWN TO: DATE: 2013.11.29

REVIEWED: DATE: 2013.11.29

PLAN NO. **Sheet 2**

CONCEPT - SUBJECT TO PRELIMINARY SURVEY AND DESIGN

137 Ave and Mark Messier Tr Intersection Options
Mark Messier Trail, 137 Avenue to TUC Boundary
Concept Drawing - Service Roads with Monowalk SUP

20m 0 40m

DRAWN TO: DATE: 2013.11.29

REVIEWED: DATE: 2013.11.29

PLAN NO. **Sheet 2**