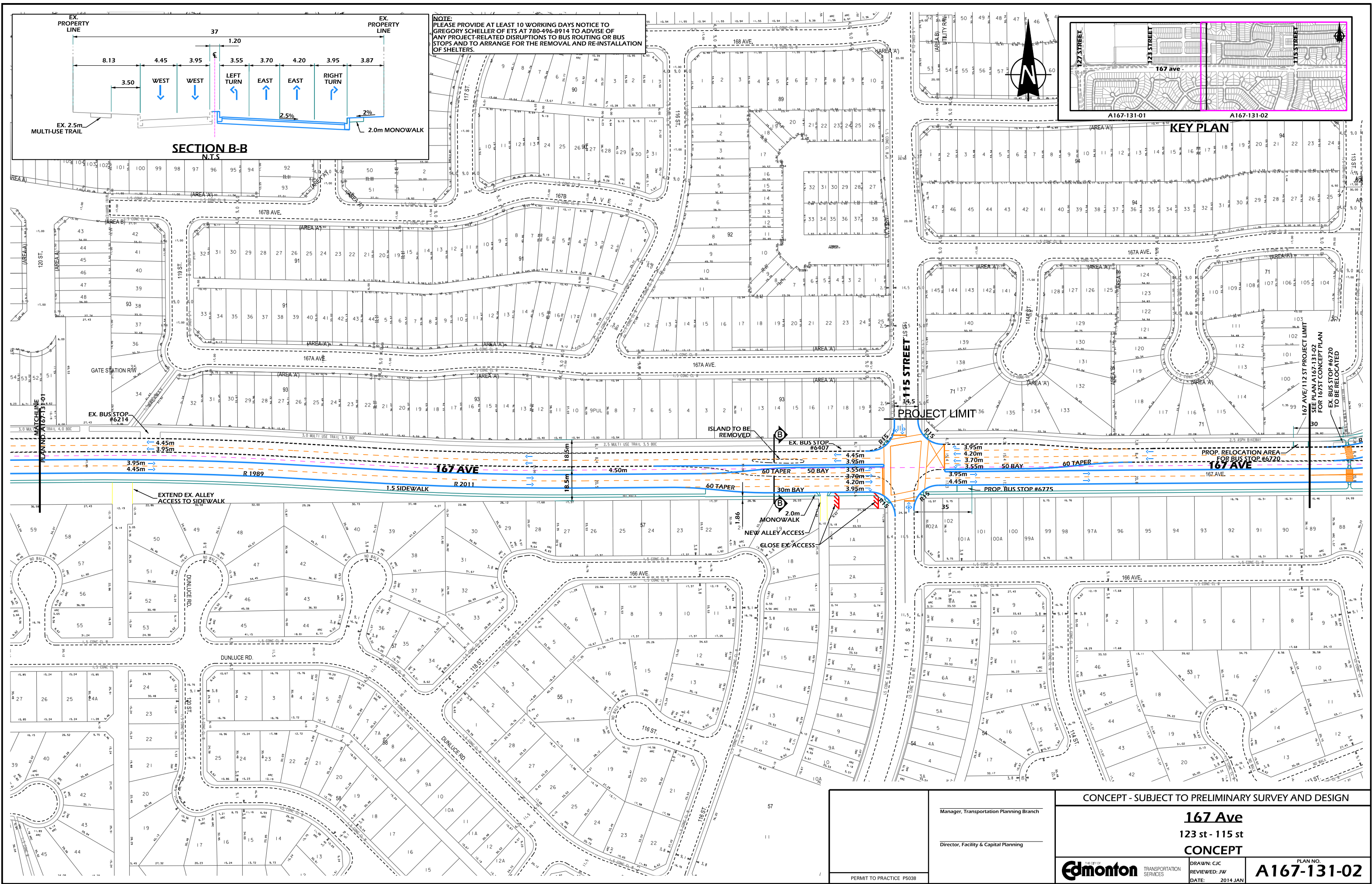


Manager, Transportation Planning Branch

Director, Facility & Capital Planning

0 25 50m

CONCEPT - SUBJECT TO PRELIMINARY SURVEY AND DESIGN	
<div style="font-size: 1.5em; font-weight: bold; margin-bottom: 5px;"><u>167 Ave</u></div> <div style="font-size: 1.2em; margin-bottom: 5px;">127 St - 123 St</div> <div style="font-size: 1.5em; font-weight: bold; margin-bottom: 5px;">CONCEPT</div>	
<div style="display: flex; justify-content: space-between; align-items: center;"> <div style="font-size: 0.8em;">SUBJECT OF</div> <div style="font-size: 0.8em;">DRAWN: CJC</div> </div> <div style="display: flex; justify-content: space-between; align-items: center;"> <div style="font-size: 0.8em;">TRANSPORTATION SERVICES</div> <div style="font-size: 0.8em;">REVIEWED: JW</div> </div>	<div style="display: flex; justify-content: space-between; align-items: center;"> <div style="font-size: 0.8em;">PLAN NO.</div> <div style="font-size: 1.5em; font-weight: bold;">A167-131-0</div> </div>



Manager, Transportation Planning Branch

Director, Facility & Capital Planning

PERMIT TO PRACTICE P5038

CONCEPT - SUBJECT TO PRELIMINARY SURVEY AND DESIGN

167 Ave
123 st - 115 st
CONCEPT



TRANSPORTATION SERVICES

DRAWN: CJC
REVIEWED: JW
DATE: 2014 JAN

PLAN NO.
A167-131-02