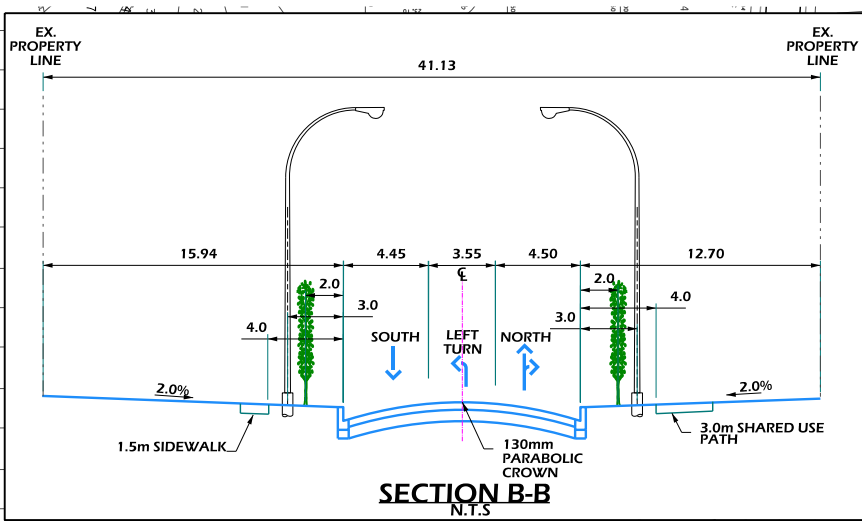
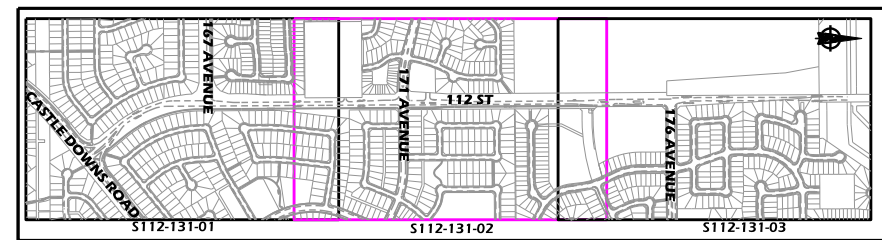


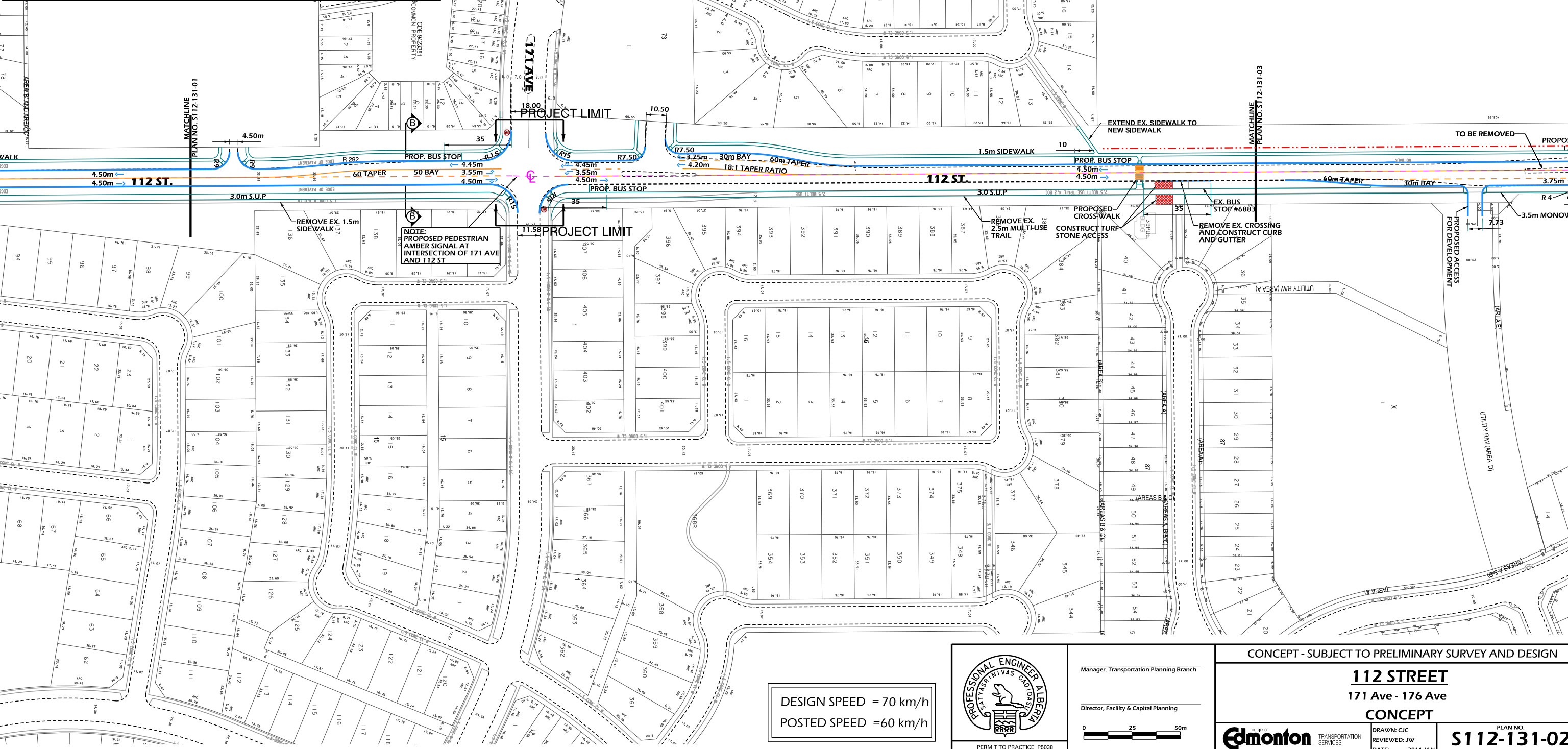
DRAWN: CJC REVIEWED: JW/ DATE: 2014 JAN	PLAN NO. S112-131-01
---	--------------------------------



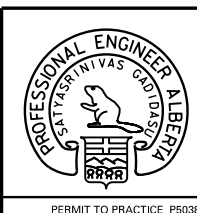
NOTE: PLEASE PROVIDE AT LEAST 10 WORKING DAYS NOTICE TO GREGORY SCHELLER OF ETS AT 780-496-8914 TO ADVISE OF ANY PROJECT-RELATED DISRUPTIONS TO BUS ROUTING OR BUS STOPS AND TO ARRANGE FOR THE REMOVAL AND RE-INSTALLATION OF SHELTERS.



KEY PLAN

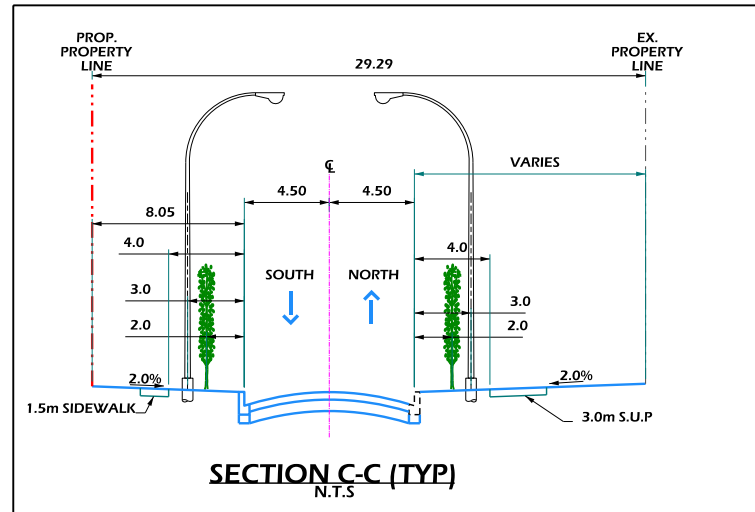


DESIGN SPEED = 70 km/h
POSTED SPEED = 60 km/h



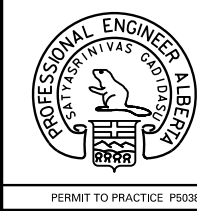
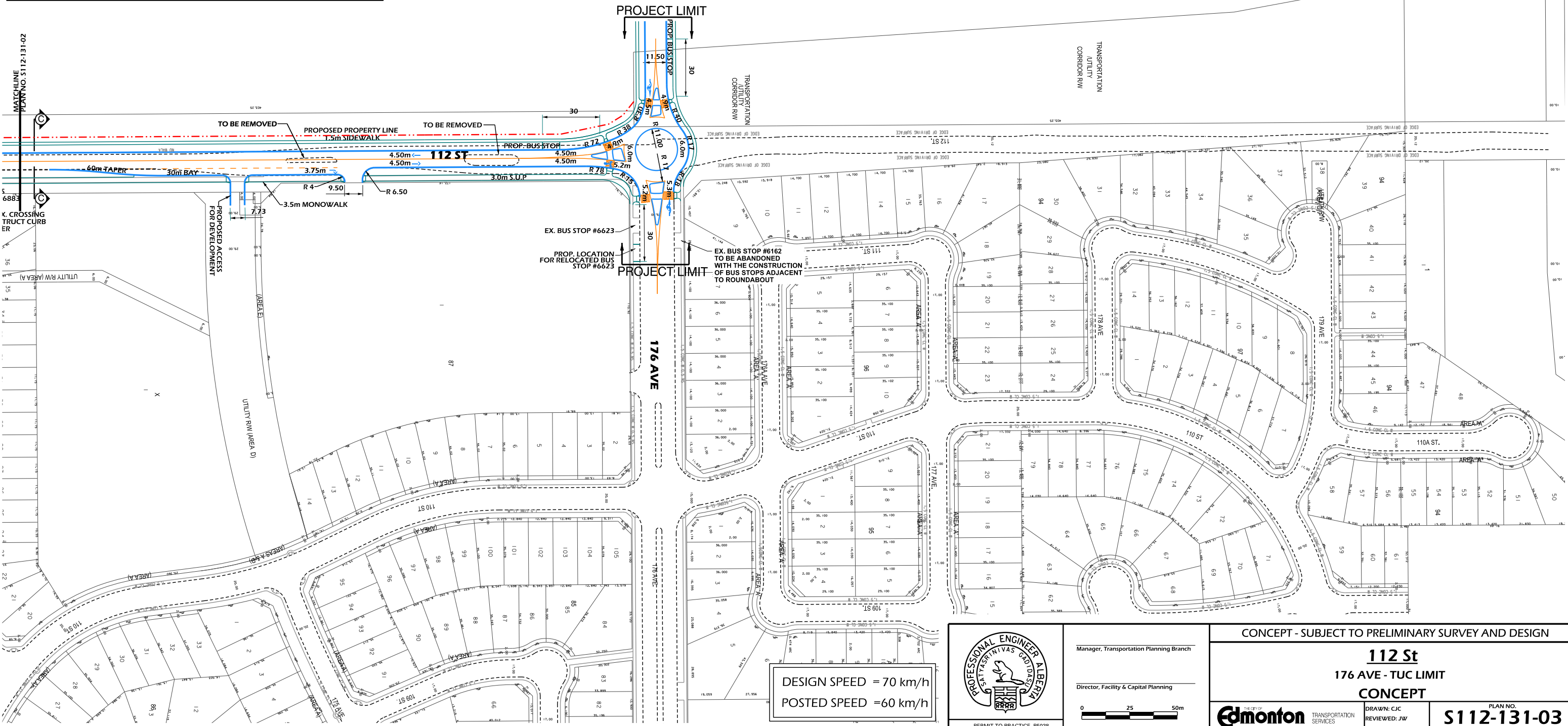
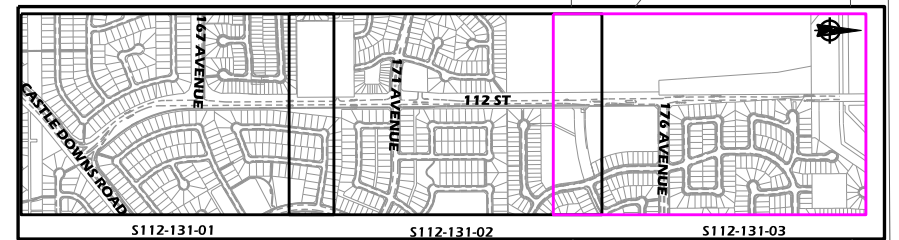
Manager, Transportation Planning Branch
Director, Facility & Capital Planning
0 25 50m

CONCEPT - SUBJECT TO PRELIMINARY SURVEY AND DESIGN	
112 STREET 171 Ave - 176 Ave	
CONCEPT	
Edmonton	TRANSPORTATION SERVICES
DRAWN: CJC REVIEWED: JW DATE: 2014 JAN	PLAN NO. S112-131-02



NOTE:
CONSTRUCTION WITHIN THE TUC
REQUIRES MINISTER CONSENT

NOTE:
PLEASE PROVIDE AT LEAST 10 WORKING DAYS NOTICE TO
GREGORY SCHELLER OF ETS AT 780-496-8914 TO ADVISE OF
ANY PROJECT-RELATED DISRUPTIONS TO BUS ROUTING OR BUS
STOPS AND TO ARRANGE FOR THE REMOVAL AND RE-INSTALLATION
OF SHELTERS.



Manager, Transportation Planning Branch

Director, Facility & Capital Planning

0 25 50m

CONCEPT - SUBJECT TO PRELIMINARY SURVEY AND DESIGN	
112 St 176 AVE - TUC LIMIT	
CONCEPT	
Edmonton	TRANSPORTATION SERVICES
DRAWN: CJC REVIEWED: JW DATE: 2014 JAN	PLAN NO. S112-131-03