

112 AVENUE PUBLIC REALM ENHANCEMENT: PROJECT SCOPE PLAN VIEW - (68-62 STREET)

SEPTEMBER 16, 2013



Scale 1:250

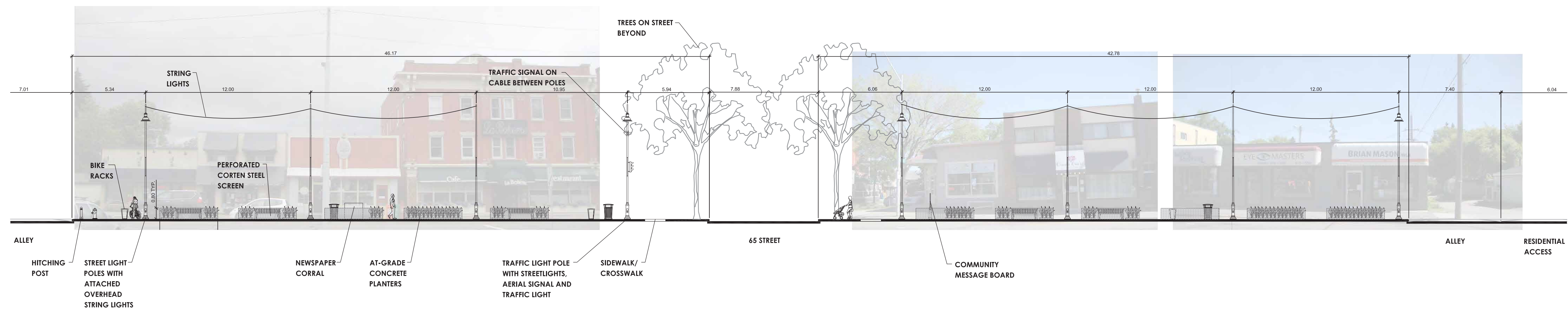


112 AVENUE PUBLIC REALM ENHANCEMENT PLAN - (66-64 STREET)

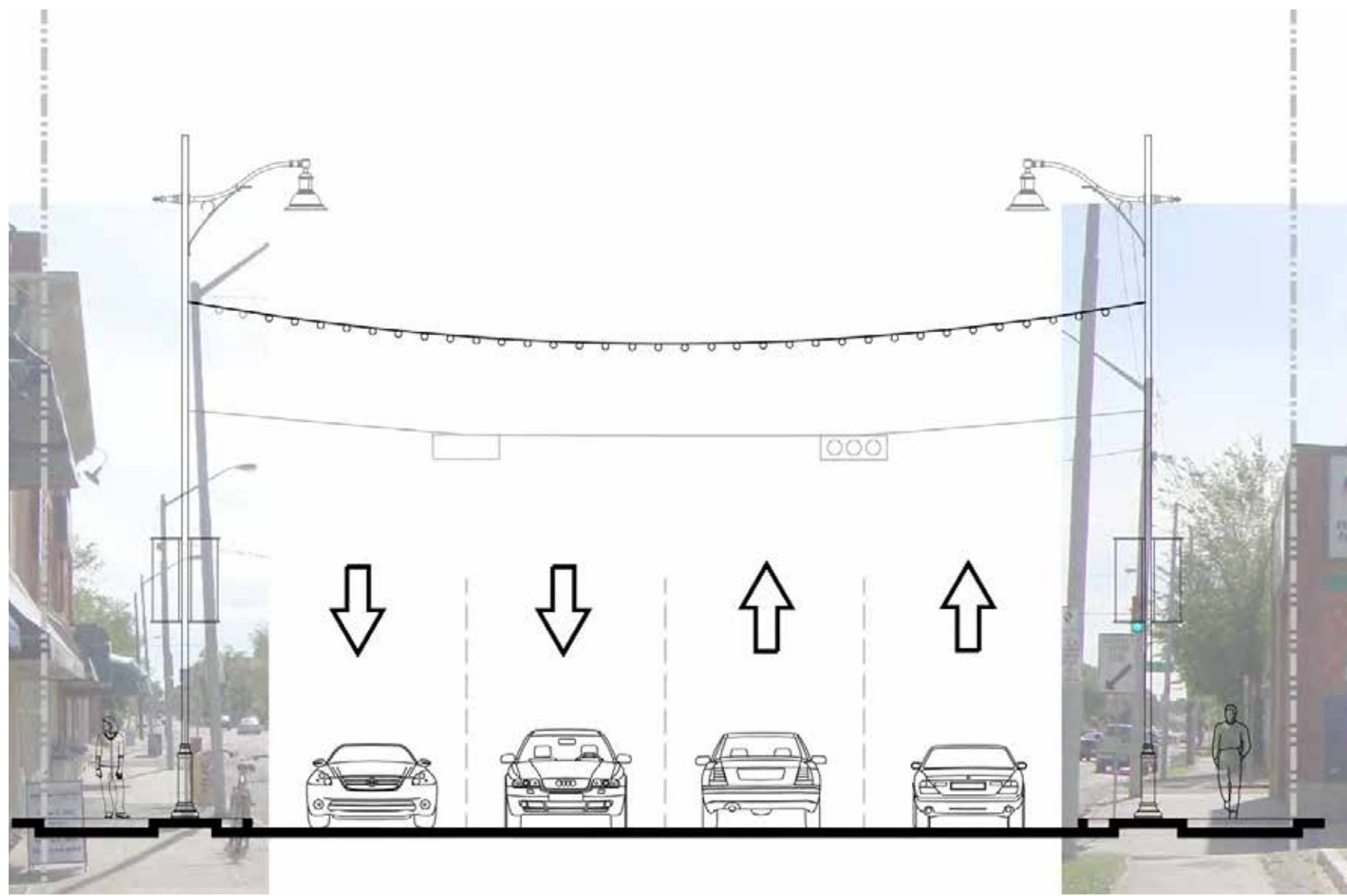
SEPTEMBER 16, 2013



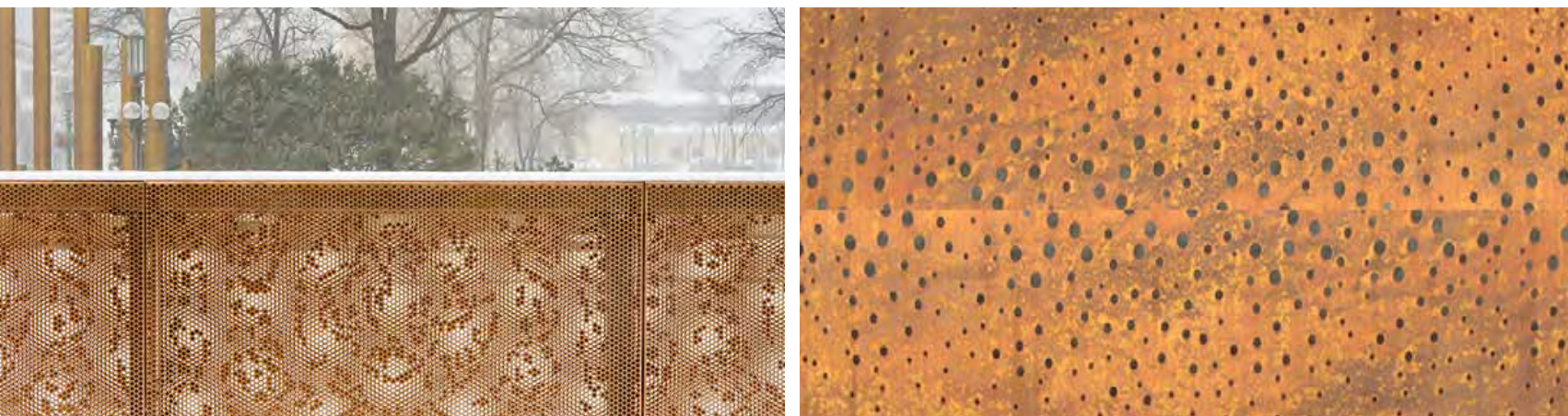




ENHANCED AREA LONGITUDINAL CROSS-SECTION - **SCREEN** OPTION  
112 Avenue (Looking South Between 64 & 65 Streets) Scale 1:150



ENHANCED AREA CROSS-SECTION  
112 Avenue (Looking West) Scale 1:100



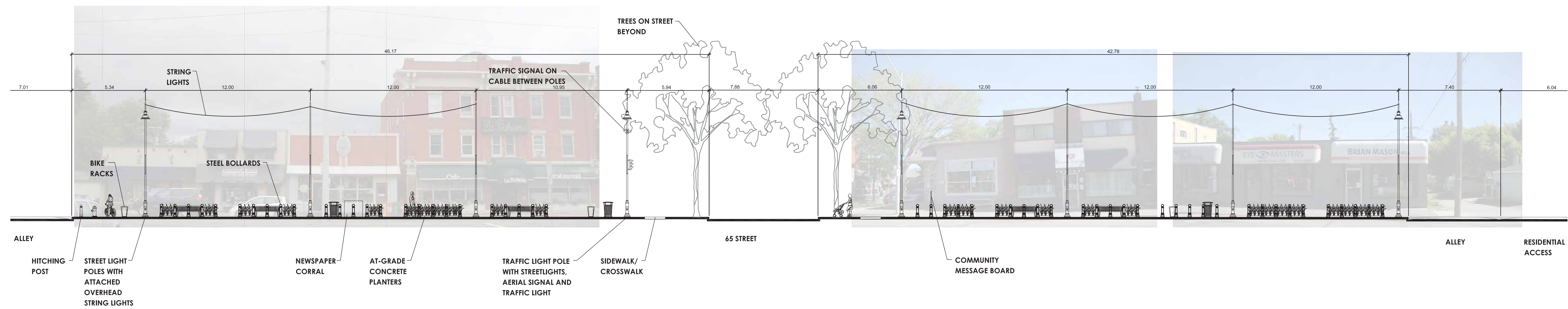
PERFORATED CORTEN STEEL SCREEN EXAMPLES



CONCEPT RENDERINGS

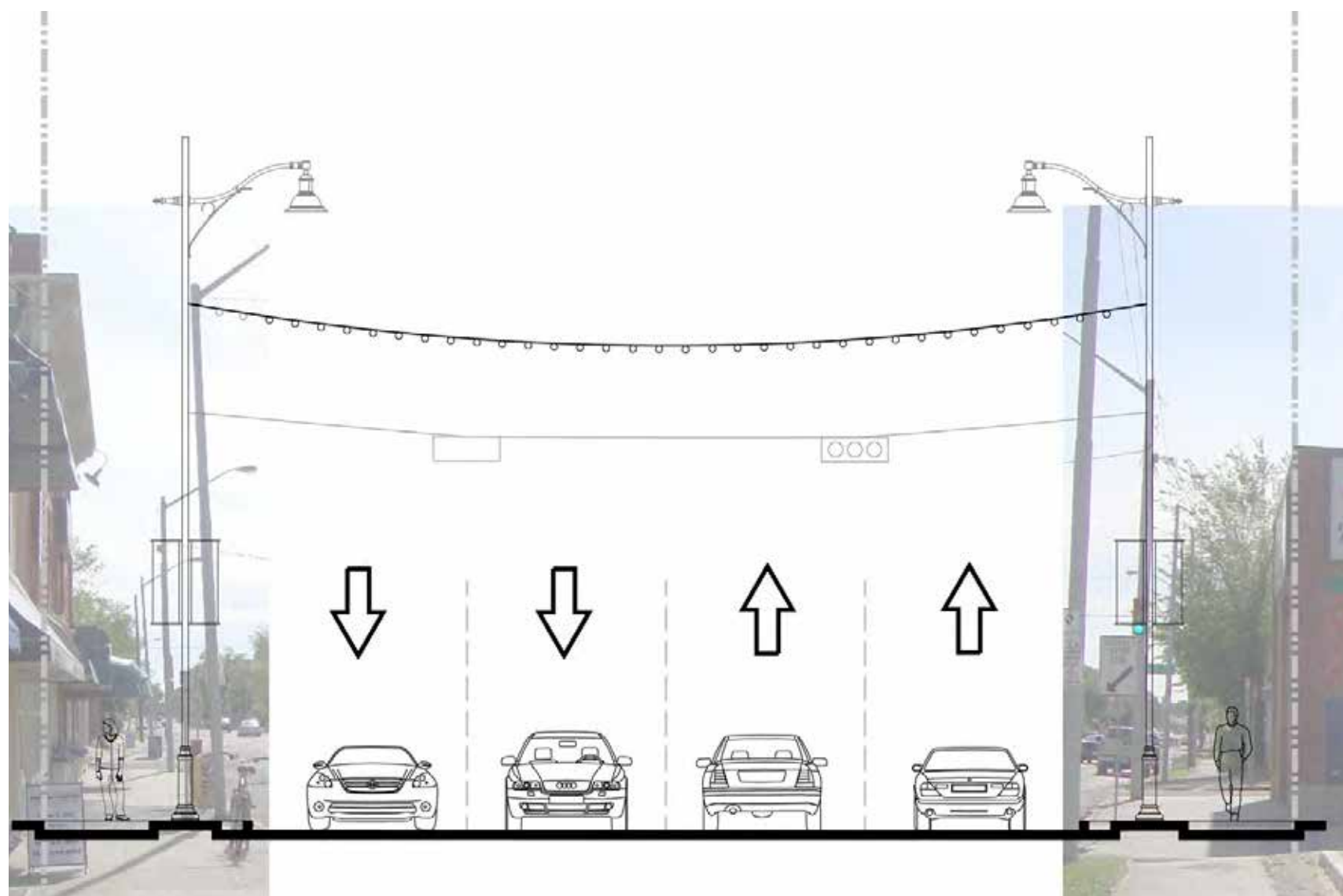






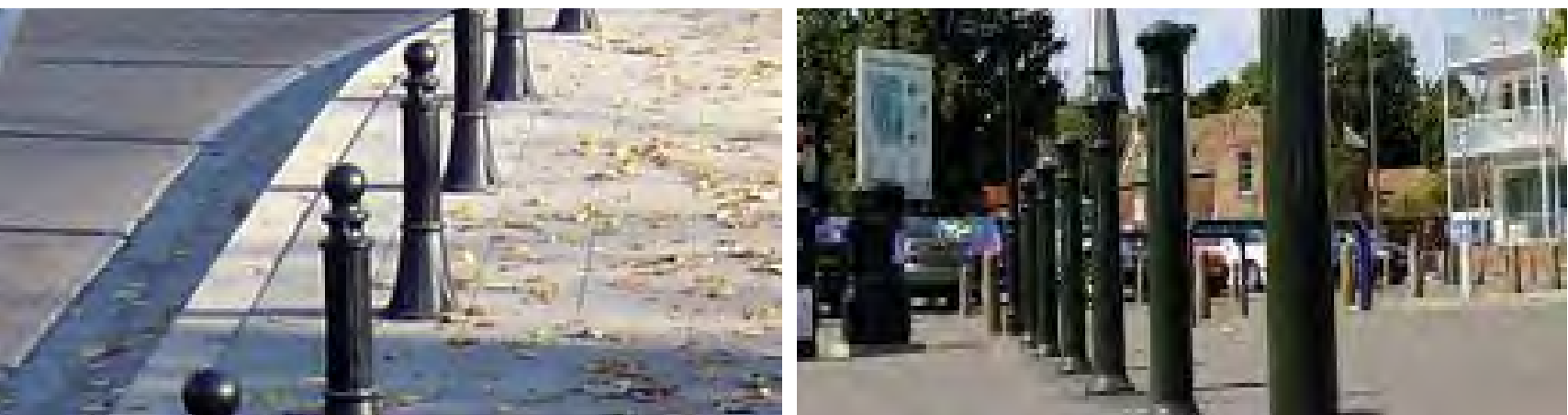
ENHANCED AREA LONGITUDINAL CROSS-SECTION - **BOLLARD OPTION**  
112 Avenue (Looking South Between 64 & 65 Streets)

Scale 1:150



ENHANCED AREA CROSS-SECTION  
112 Avenue (Looking West)

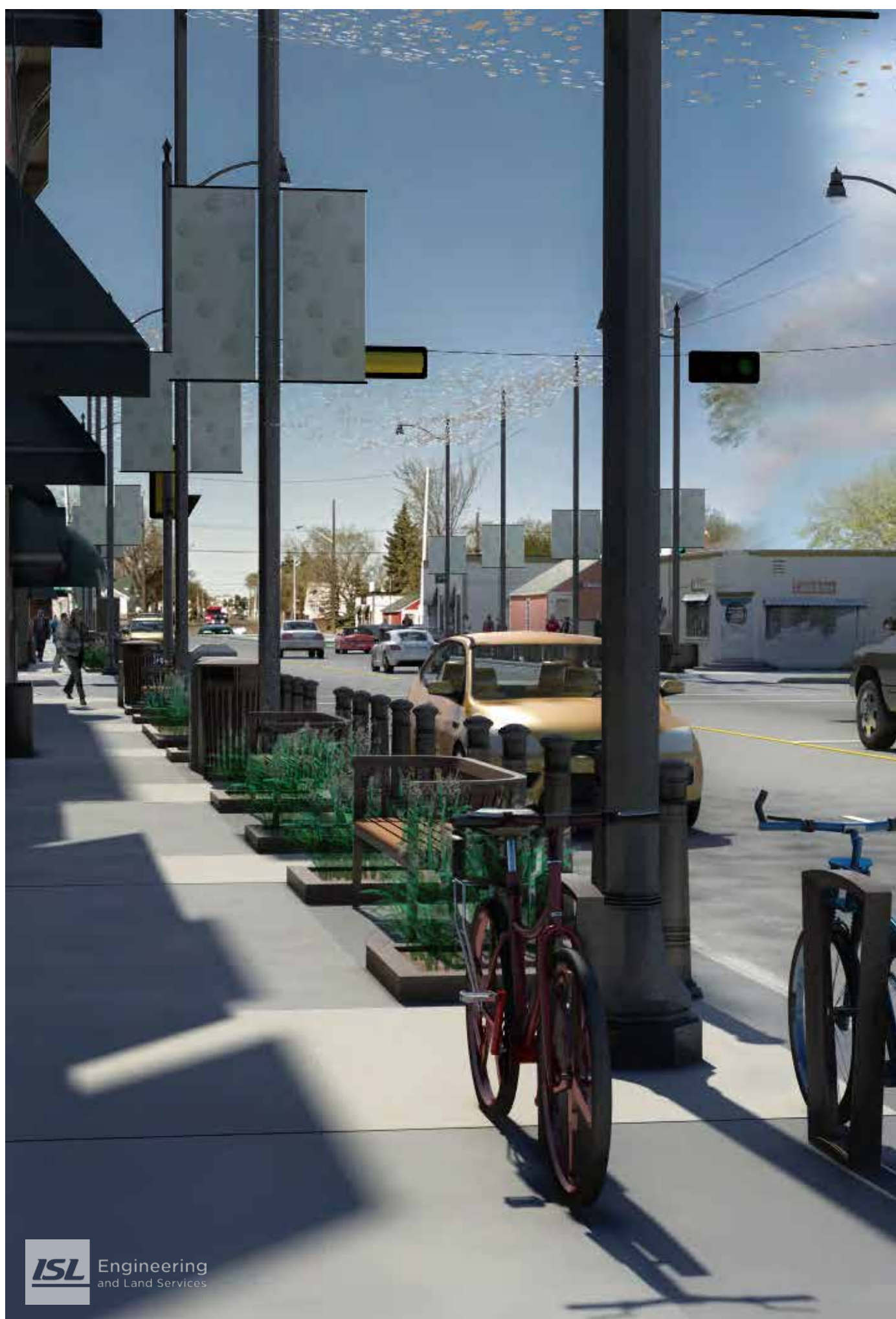
Scale 1:100



MANCHESTER BOLLARD EXAMPLES



CONCEPT RENDERINGS











Daytime View with Overhead String Lights



Night View with Overhead String Lights



Winter Conditions View with Overhead String Lights



Daytime View without Overhead String Lights



Night View without Overhead String Lights



Winter Conditions View without Overhead String Lights



Alternative String Lighting Concept



Looking East Along 112 Avenue



Aerial Perspective of Enhanced Area



Enhanced Pedestrian Amenities



Buffer Between Road and Walkway





Melville Bench



Poe Trash Receptacle



Overhead String Lighting



City of Edmonton Bike Rack



Banners



Newspaper Corral



At-Grade Concrete Planter



Domus Street Light



Enhanced Bus Stop Waiting Area

ENHANCED AREA SITE FURNISHINGS



Historical Sign Blades



Hitching Post



Community  
Message Board  
Concept

ADDITIONAL OPTIONS TO BE EXPLORED





**LEGEND:**

- FULL SIGNAL
- ▲ PEDESTRIAN SIGNAL

- MARKED PEDESTRIAN CROSSWALK

