



102 AVENUE OVER GROAT ROAD BRIDGE REPLACEMENT PROJECT

AUGUST 2014

The 102 Avenue over Groat Road Bridge has reached the end of its service life and needs to be replaced. The old bridge site closed on **July 2, 2014** for approximately 15 months as the City constructs a replacement bridge. The new bridge is expected to open to traffic in fall 2015.

EARLY CONSTRUCTION

Construction began in February with tree removal along the Groat Ravine. In the spring, crews stabilized the slope underneath the bridge with soil nails and replaced the existing watermain.

Crews are nearing completion on shoring work on the nearby Wellington Bridge. Support scaffolding was installed under the bridge to accommodate truck and heavy equipment traffic to the bridge construction site. This scaffolding will remain in place.

BRIDGE DEMOLITION

The bridge was closed **July 1** and demolished over the first weekend of July.

Excavators began in the centre of the bridge to remove handrails, guardrails and concrete walkways. They then removed bridge decking and cross beams, moving towards the piers.

Once work on the top of the bridge was completed, crews moved to Groat Road to finish demolition of the bridge piers, concrete bases and abutments. All material was then removed from the site. The entire bridge was removed by July 6. Groat Road remained completely closed until July 8 until all bridge material was removed.

GROAT ROAD PAVING

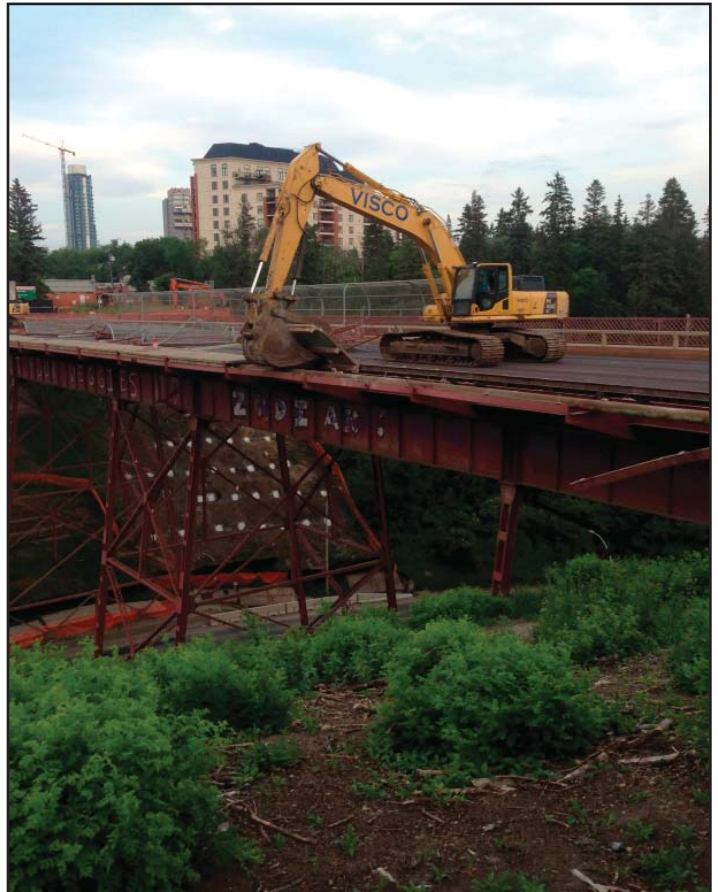
In April City Council reallocated \$27.1 million from the 2014 budget for additional arterial and neighbourhood road construction projects in 2014 and 2015. As part of this additional investment, the City was able to repave Groat Road from 107 Avenue to Victoria Park Road during evening and weekend closures July 18-31.

PARKING CHANGES

Additional parking restrictions were put in place after the closure of 102 Avenue due to increased traffic volumes on Stony Plain Road. Weekday peak hour tow away zones have been added to the south side of Stony Plain Road between 124 Street and 127 Street. Full details and maps of road detours and parking bans are available on the project website.

CONSTRUCTION WEBCAMS

Two live webcams have been placed on 102 Avenue and along Groat Road for the duration of construction. Check out the construction progress live on the project webpage.



Bridge demolition

CONSTRUCTION TIMELINE

2013-14	<u>Completed</u> <ul style="list-style-type: none"> • Drainage upgrades • Tree clearing • Watermain replacement • Soil nail installation • Bridge closed July 1 • Bridge demolition • Paving of Groat Road
2014	<u>Ongoing/Upcoming</u> <ul style="list-style-type: none"> • Bridge pilings • Shoring of Wellington Bridge
2014-15	<ul style="list-style-type: none"> • Bridge abutment • Erection of girders
2015	<ul style="list-style-type: none"> • Bridge deck • Paving and road tie-ins • Opening of new bridge in fall



Bridge demolition