

Welcome!

102 Avenue over Groat Road Bridge Replacement (B2)



Purpose of Meeting:

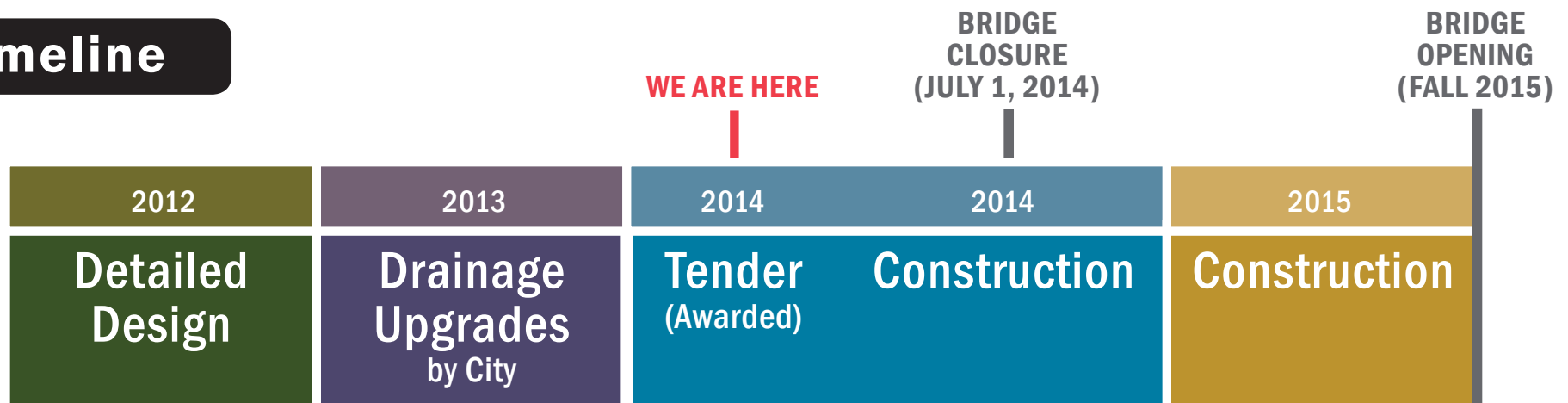
To update stakeholders on the upcoming construction schedule

Overall Project and Timeline

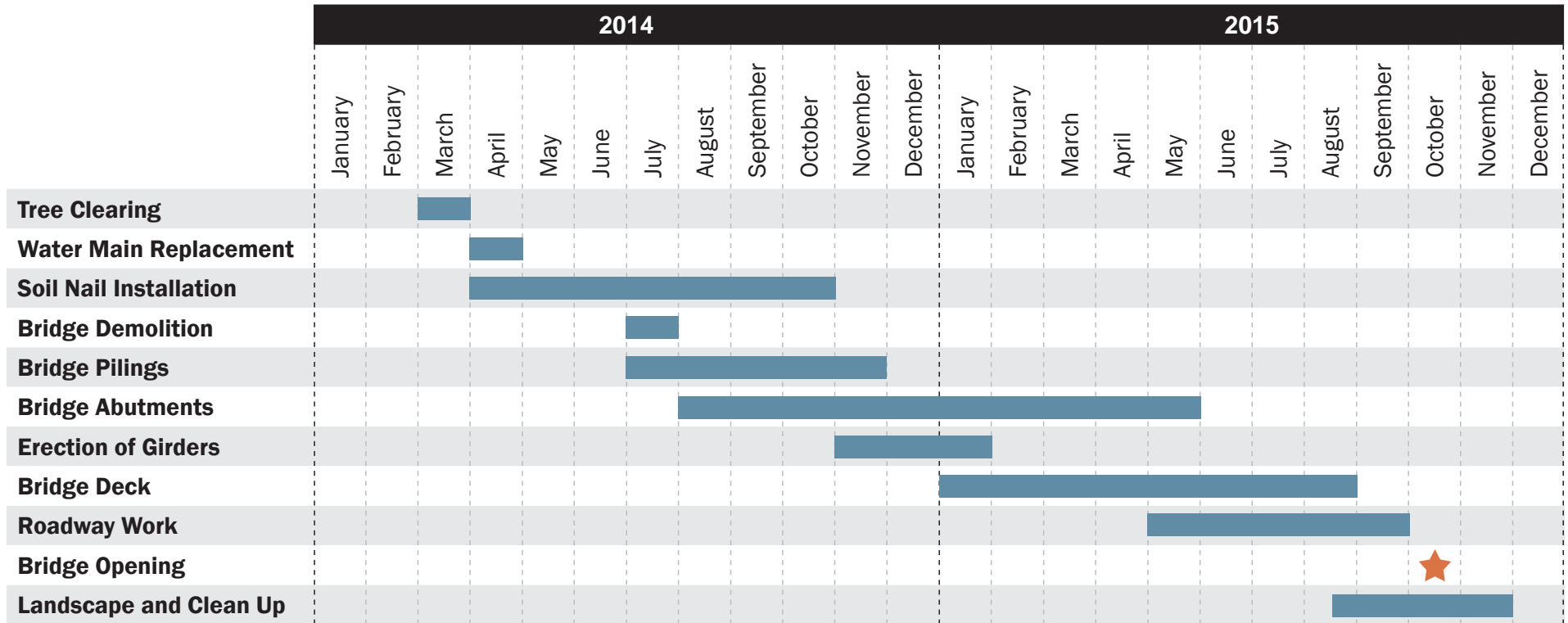
Scope of Project

- Replacement of the 102 Avenue over Groat Road Bridge with a new bridge
- Enhancements to the storm water management system
- An environmental impact assessment (EIA) was conducted to assess and mitigate possible environmental impacts of this project
- Percent for Art will be incorporated into the project

Timeline



Overall Project Schedule



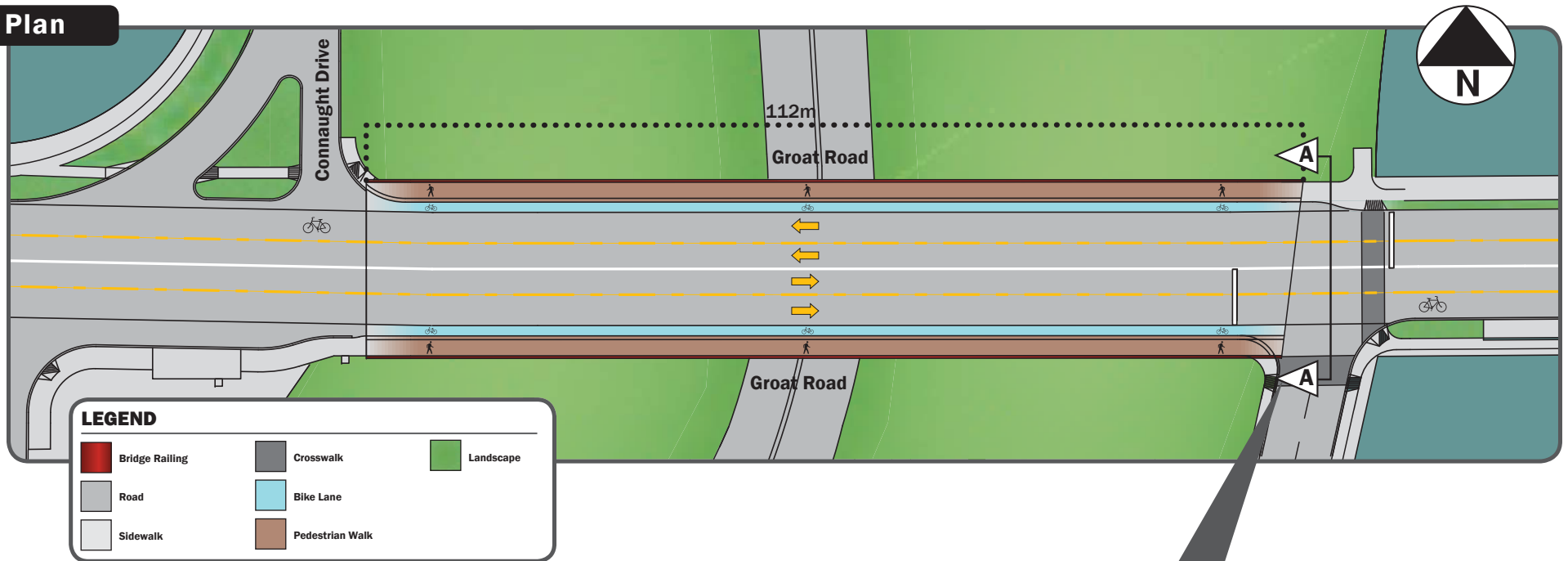
Bridge Perspective

Looking North

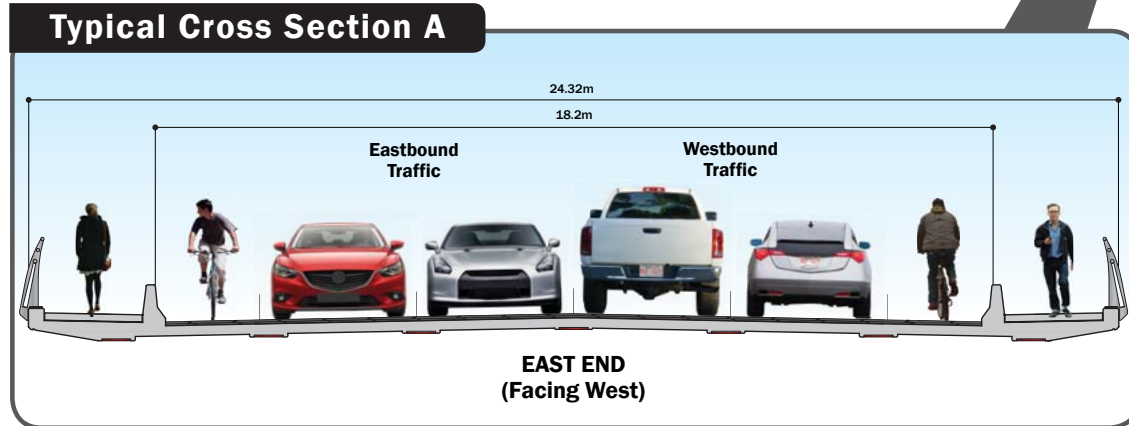


Bridge

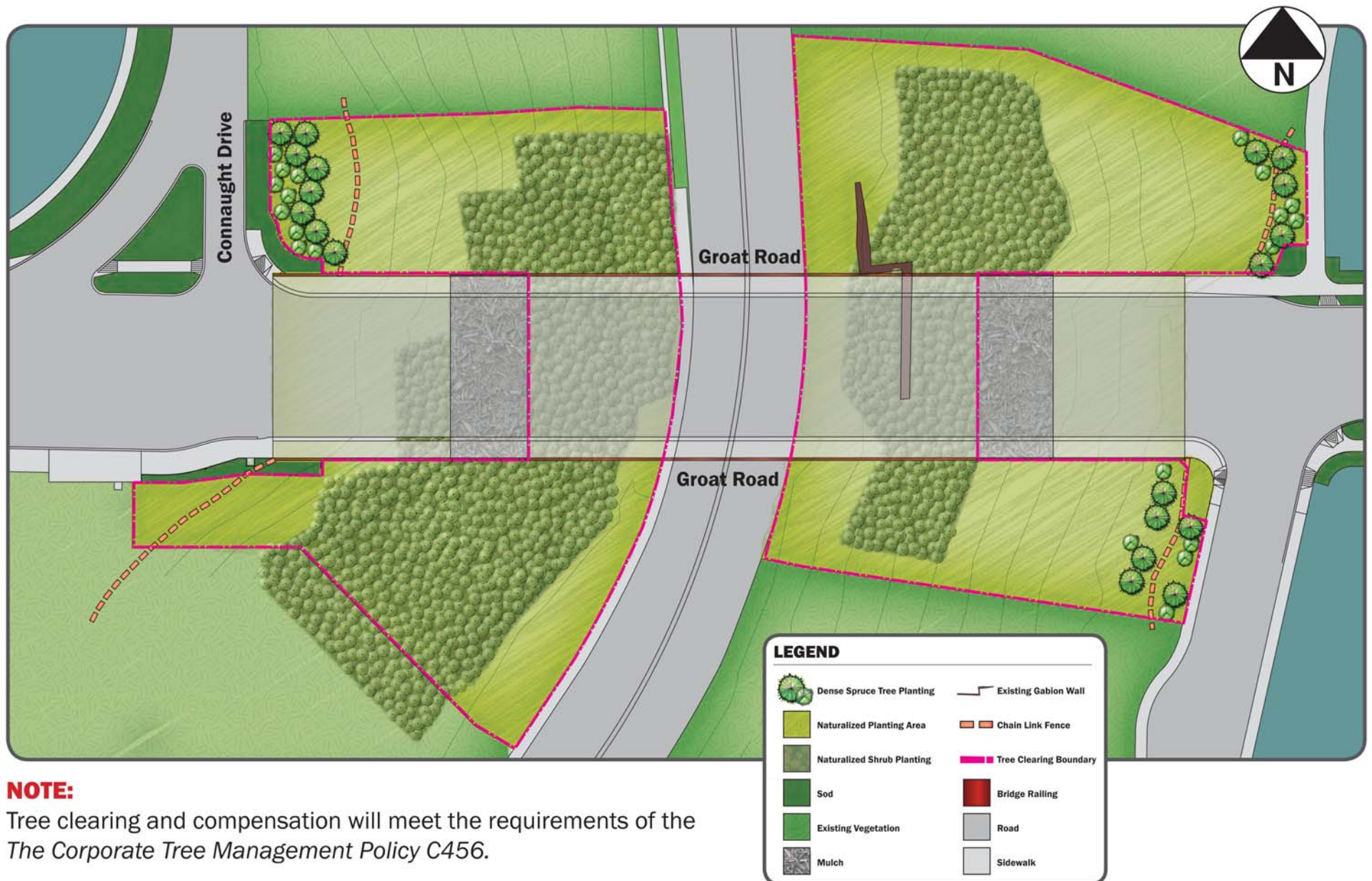
Plan



Typical Cross Section A



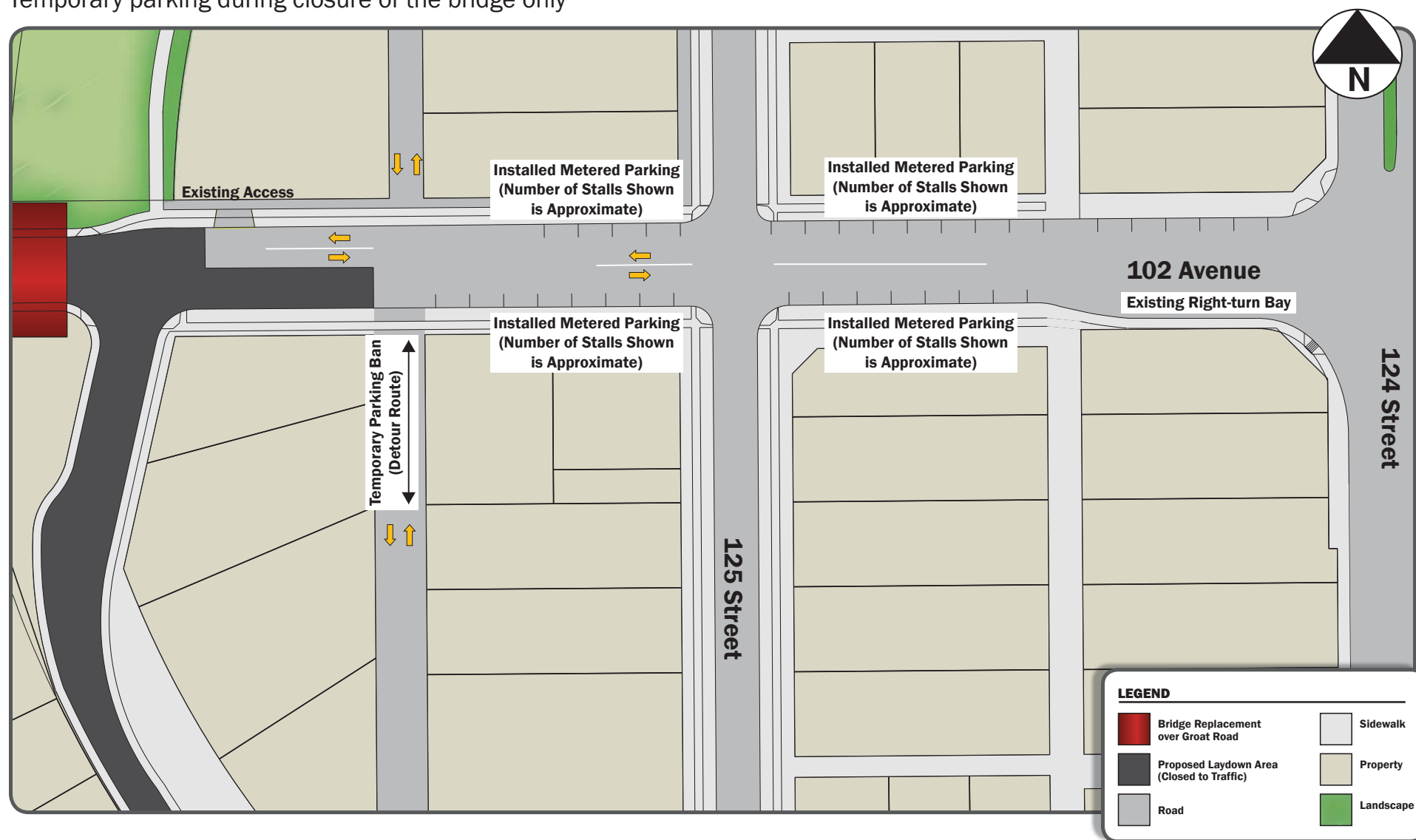
Landscaping



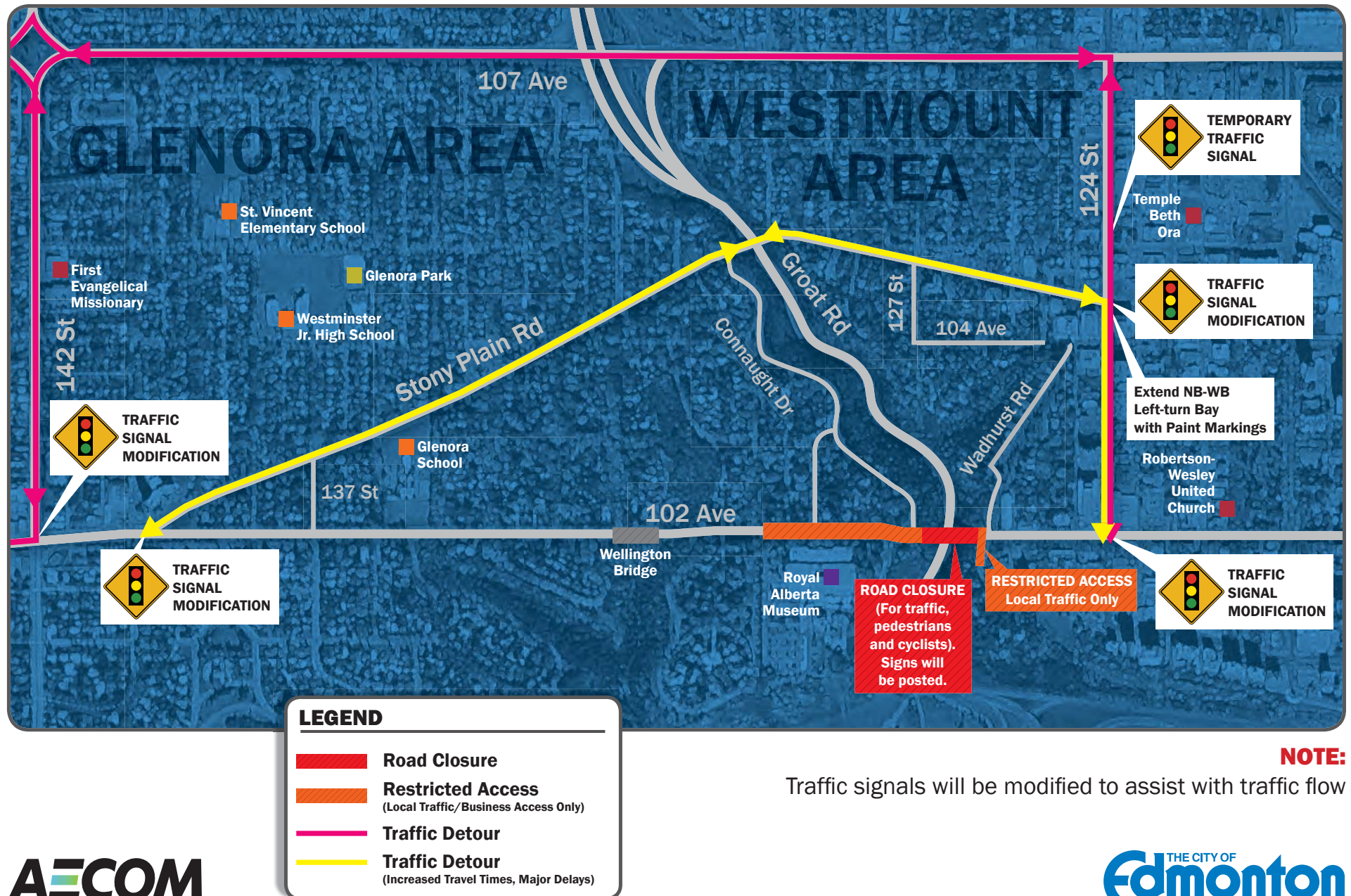
Proposed Parking Changes

NOTE:

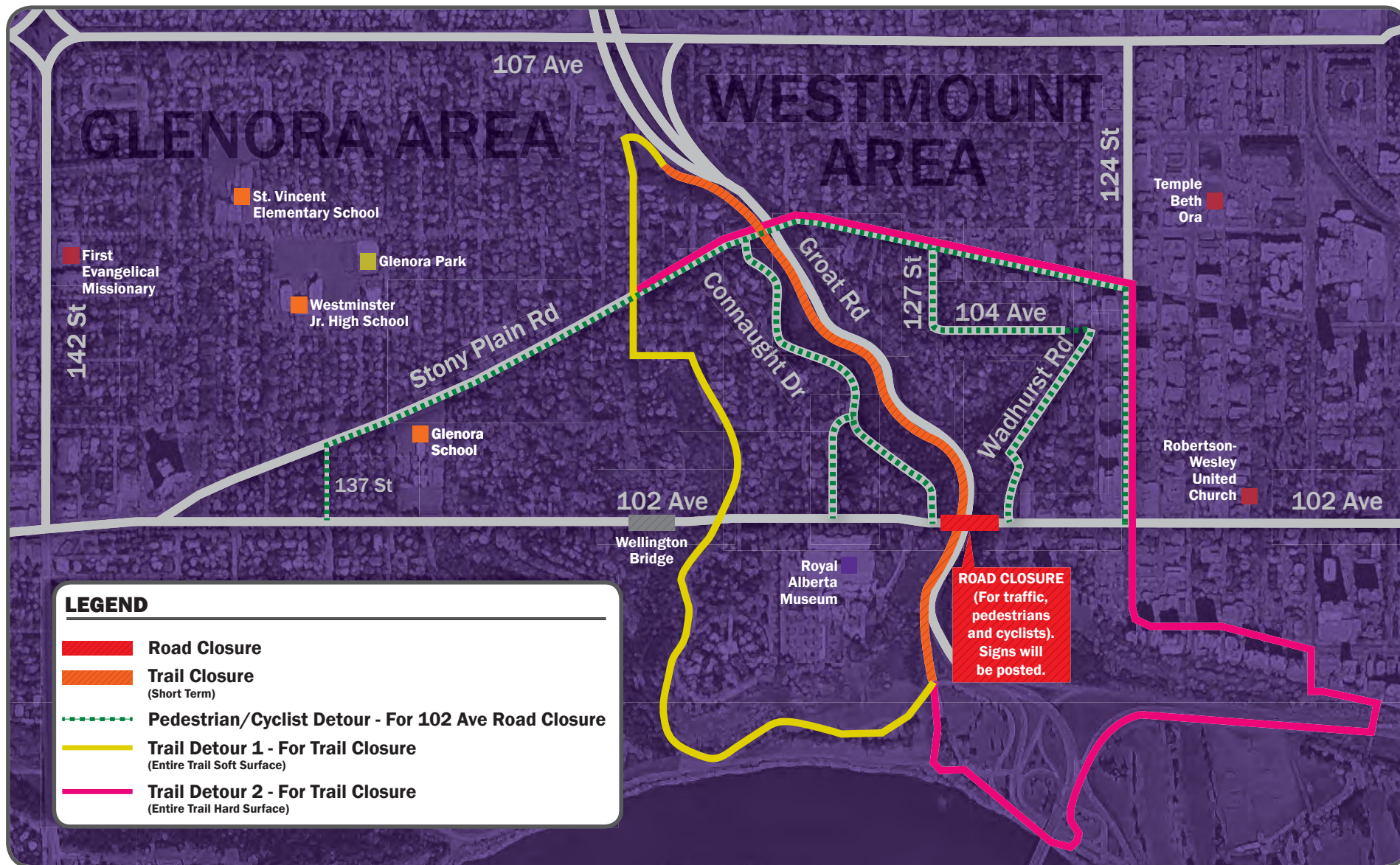
Temporary parking during closure of the bridge only



Proposed Traffic Detours

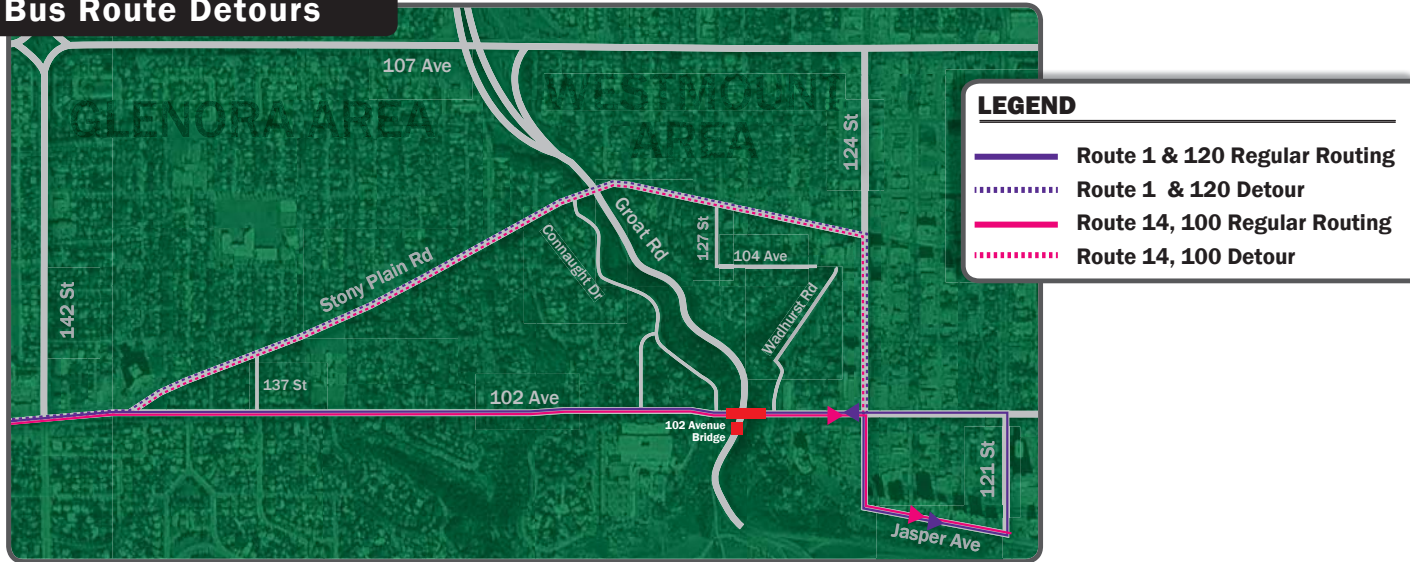


Proposed Pedestrian & Trail Detours

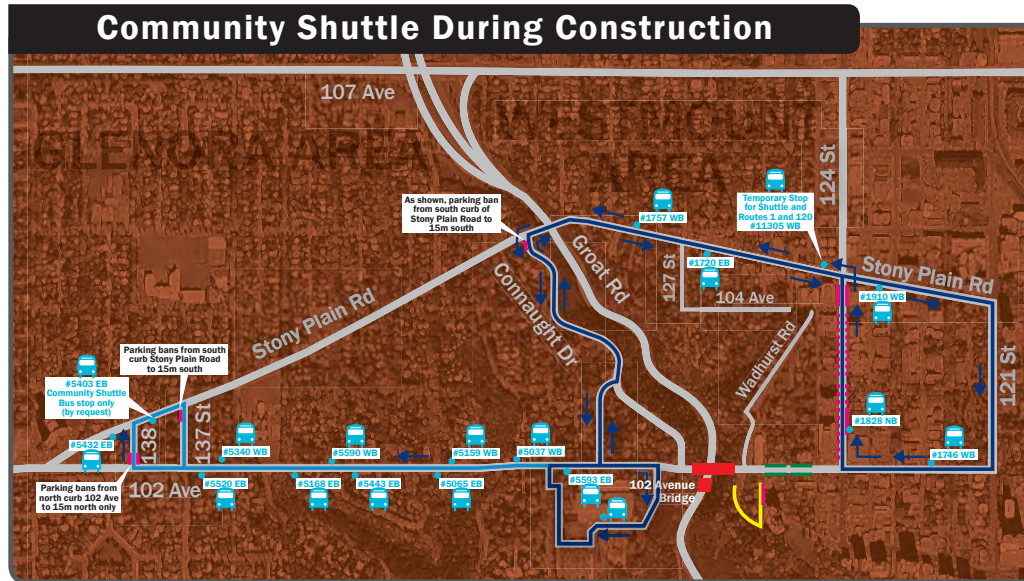


Bus Detours

Bus Route Detours



Community Shuttle During Construction



Environmental Impact Assessment

What is an EIA?

An Environmental Impact Assessment (EIA) looks at all of the environmental and public concerns related to the bridge replacement and determines ways to minimize impacts to the public, wildlife, plants, and the ecosystem.

Why did we complete an EIA for the project?

An EIA was required because the work is being done in the North Saskatchewan River Valley System (City of Edmonton *North Saskatchewan River Valley Bylaw 7188*)

What were we looking for?

Does the removal of the existing bridge and the installation of the new bridge affect:

- Noise, odor, and visual Impacts
- Historic resources (archaeological)
- Land use
- Hydrology & hydrogeology (water)
- Aquatic resources (rivers and creeks)
- Soils and geology (erosion and contamination)
- Vegetation (replacement strategies)
- Socioeconomic impacts (bridge lifespan)

What have we done to date?

Investigated all of the above, but specifically:

- A historic resources survey
- A hydrology study
- A geotechnical study
- Soil contaminant testing
- Two rare plant assessments and a vegetation (common plants) assessment
- A winter snow tracking survey, a bat survey, a nocturnal owl survey, a songbird survey, and incidental wildlife sightings
- Permitting for the project

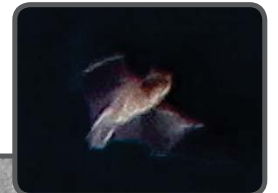
No issues have been discovered that need special treatment or remediation.

Has the EIA been approved?

Yes, the EIA was approved on July 29, 2013



*Native Landscape and
Native Animals*



Artwork

Title: now & then
Artist: Faye HeavyShield
Medium: Sculpture / Website
Materials: Recycled steel bridge decking, & concrete

For more than 100 years, the 102 Avenue Bridge served as a connection for community members, pedestrians, and transit riders travelling to and from Edmonton's downtown for work or pleasure. For many, the sound of traffic flowing across the steel bridge deck was the identifying characteristic of the original bridge.

The Percent for Art project, *now & then*, links the old bridge with the new, and preserves its auditory history while commemorating connection, bridges between areas and communities, links between past and present – between now & then.

The artwork is presented on two levels of reference:

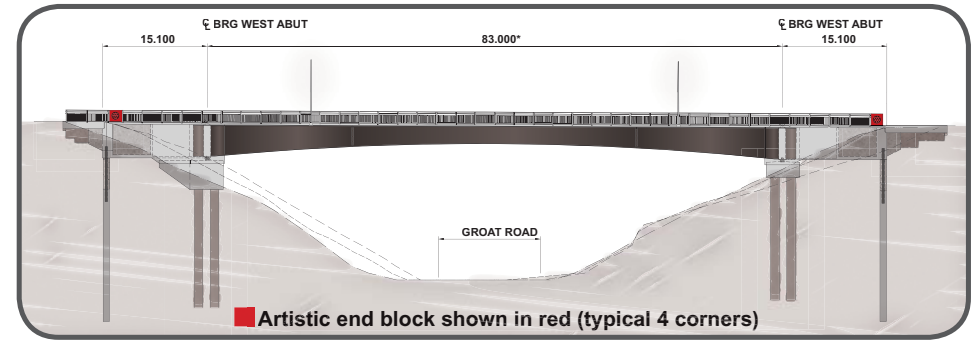
- Four steel rounds recycled from the original bridge decking integrated into the design and construction of the new bridge. Dimensions will be 1 metre in diameter set into a 390mm thick block. They will be installed at each end of the bridge and:
- a website or cyber-chronicle consisting of audio and visual documentation of the past and present. The site will contain a compilation of materials documenting various aspects of the old and new bridges; audio and video presentations of traffic crossing the bridge; photographs taken during demolition and construction of the bridges as well as of the foundry processes.

The physical treatment chosen for the sculptural part of this project is intended to be a subtle integration of 'then' into 'now' while the historical documentation on the website is proffered in a more vigorous and sensory manner. This is a nod at the blur between.

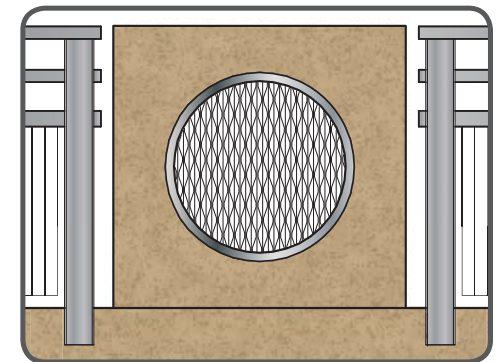
About the Artist

Faye HeavyShield was born and raised on the Blood Reserve in the southern Alberta foothills. She studied at the Alberta College of Art and Design and the University of Calgary. Since the early 1990s her work has been exhibited throughout Canada in numerous solo and group exhibitions including; *Land, Spirit, Power* (National Gallery of Canada); *heart, hoof, horn* (Glenbow Museum, Calgary); *she: a roomful of women* (Thunder Bay Art Gallery); *Nations in Urban Landscapes* (Contemporary Art Gallery, Vancouver); *In My Lifetime* (Canadian Museum of Civilization, Gatineau); *blood* (Southern Alberta Art Gallery, Lethbridge); *The View from Here*; 2013 Alberta Biennial of Contemporary Art.

HeavyShield's work is held in public and private collections throughout North America, including the National Gallery of Canada.



Placement of "now & then"



Rendering of "now & then"

Public Art Key Messages

About the Public Art Selection Process

Commissions for public art are awarded via one of the Edmonton Arts Council's three selection process methods: direct call, request for proposals (RFP), or request for qualifications (RFQ).

The qualifying submissions are presented to a selection committee comprised of City of Edmonton personnel, the project architect or engineer, two community representatives and three artist representatives.

Calls for submissions specify the criteria for the artwork opportunity, budget, timeline, and a background of the area and site location. The selection, fabrication and installation of Percent for Art projects are initiated and coordinated with construction timelines.

About Edmonton's Percent for Art Program

Percent for Art is a program that allows the City of Edmonton to acquire artwork for public spaces, in accordance with the City of Edmonton policy "*Percent for Art to Provide and Encourage Art in Public Areas*" (C458C). Edmonton developed its Percent for Art policy in 1991. The Edmonton Arts Council directs the Percent for Art program and provides vision for and stewardship of the City of Edmonton Public Art Collection. The EAC also assists in maintaining the collection through its conservation staff.

City Position

The City of Edmonton supports public art as a way of enhancing the experience of living in Edmonton. The City allocates space for public art. It provides funding for artwork under its *Percent for Art Policy*. The City has worked with the Edmonton Arts Council to develop rigorous selection criteria for public art acquisition.

About the Edmonton Arts Council

The Edmonton Arts Council is a not-for-profit society and charitable organization that supports and promotes the arts community in Edmonton. The EAC works to increase the profile and involvement of arts and culture in all aspects of our community life.

For more information about the Edmonton Arts Council and all of our programs, please visit edmontonarts.ca.

View the City of Edmonton Public Art Collection online gallery at edmontonpublicart.ca

Contact

Eva Marie Clarke
Communications Officer
p: 780.424.2787 ext 235 | email: emclarke@edmontonarts.ca



Public Involvement

What have we done?

- Meetings with key stakeholder groups including local businesses, the 124 Street Business Revitalization Zone (BRZ) and community leagues, and neighbourhood associations.
- Information on project website:
www.edmonton.ca/102AvenueOverGroat
- Public meeting held September 23, 2012
- Promotion of tonight's public meeting

What we heard

Concerns about shortcutting through Glenora & Westmount Communities from 102 Avenue to Stony Plain Road.

Inform all Edmontonians of bridge closure through extensive media.

Inform all potential users of 102 Avenue well in advance of the detour site to allow users maximum notice and maximum options to revise their routing east and westbound.

Assist businesses in the area in communicating where to gain access to and from their businesses during construction.

Clearly promote alternative routes for pedestrians and cyclists.

Promote alternate ETS bus routes and consider bus shuttles.

Adjust traffic lights on 102 Avenue and 124 Street to facilitate movement in and out of High Street business area.

Consider traffic movements in, out and through Royal Alberta Museum site.

Concern about the timeline and the project being completed on time.

What we are doing

Signage will be placed by the City to deter shortcutting.

The City of Edmonton project website, roadside signage, mailouts and public announcements will be utilized to keep Edmontonians updated on the project

Roadside signage will be placed well in advance of intersections that allow the user to re-route around the road closure required for the bridge construction. See the Proposed Detours board.

Roadside signage will be placed to identify accesses to and from local businesses.

Signage will be provided to promote alternate routes and a bulletin board will be provided by the construction site with additional information.

Signage at the existing stops will be placed for easy reference by ETS users. Information on a taxi shuttle service will also be provided at these locations. See the Bus Detours board.

Traffic signals will be modified to assist with traffic flow.

Turning movements have been retained as they currently exist for the Royal Alberta Museum.

Penalties and incentives are included in the contract to help keep the project on time. However, weather can play a factor that is beyond the control of the project team.

Thank You!

Check the website for ongoing updates:

www.edmonton.ca/102AvenueOverGroat